

Fig. 1: Binding affinity and enzyme inhibition of different bisphosphonates

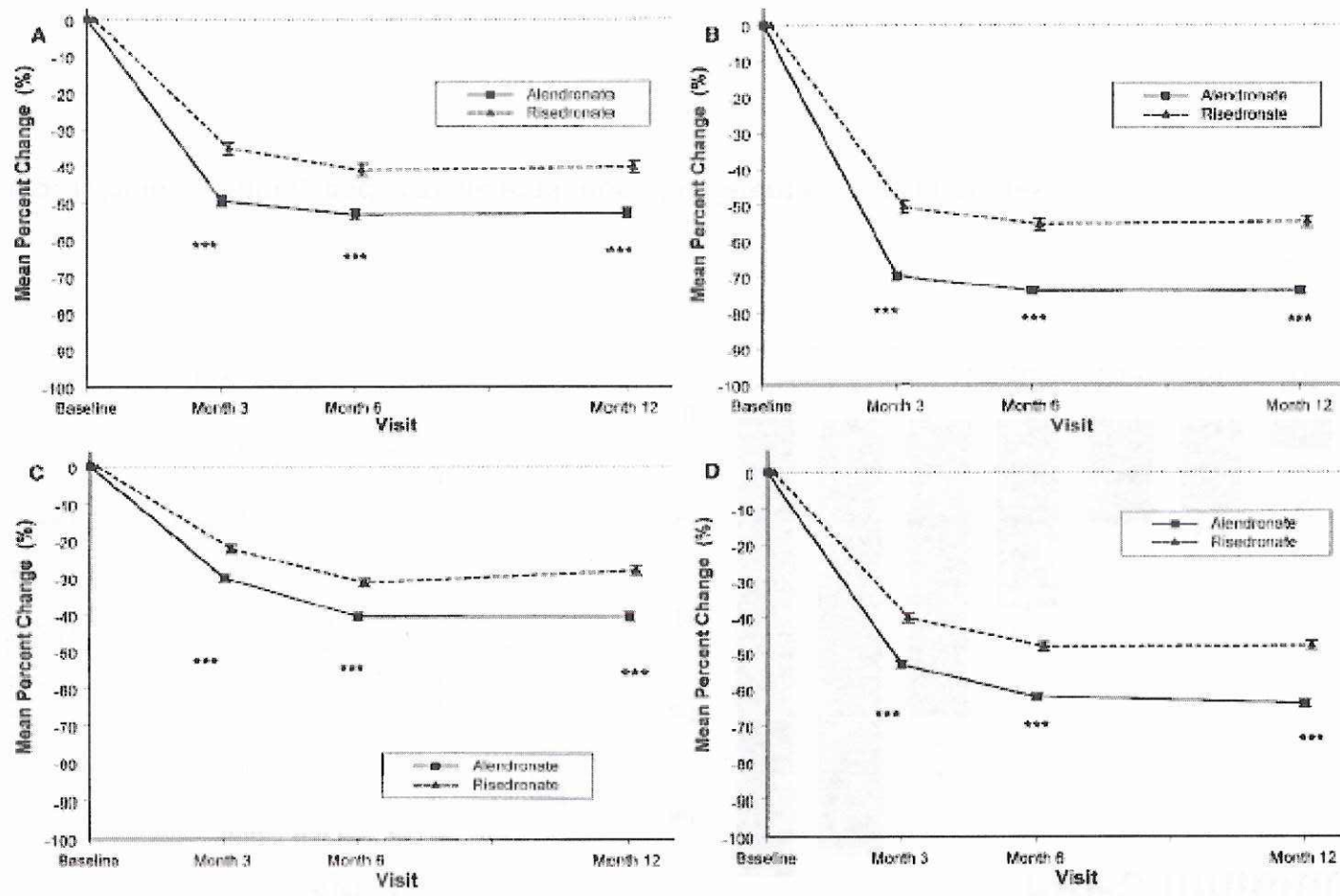


Fig. 2: Different effect of risedronate 35mg OAW vs alendronate OAW on bone turnover (Rosen et al. 2006)

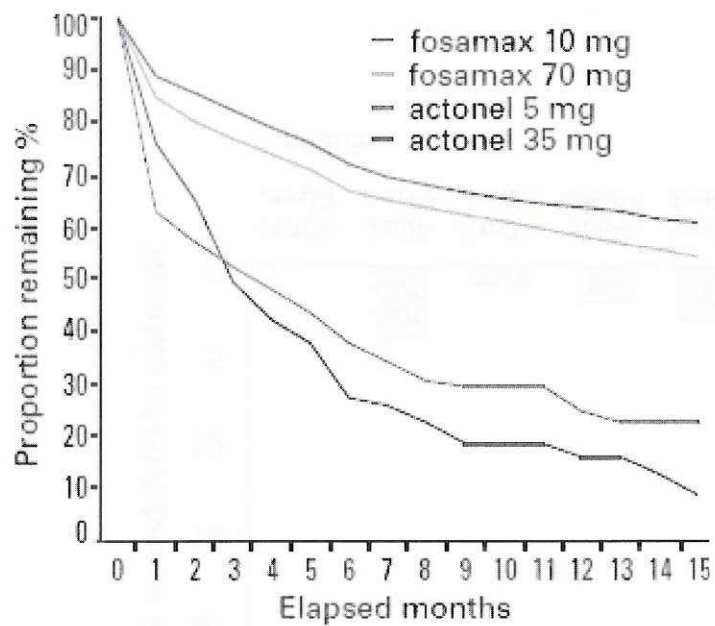


Fig 3. Compliance with daily versus weekly bisphosphonates (Sambrook 2006)

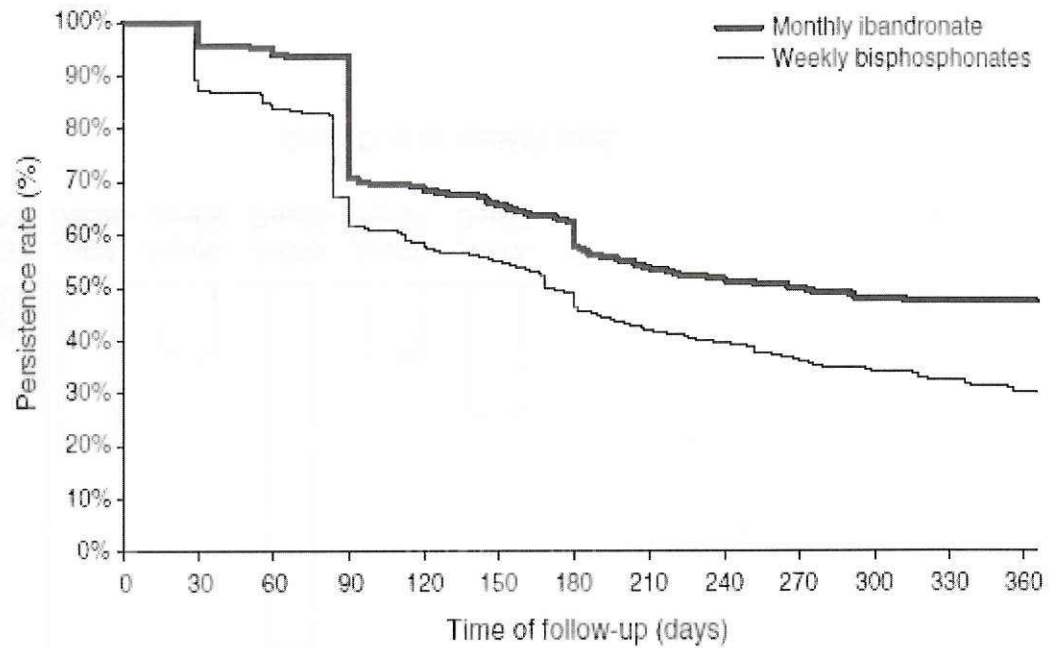
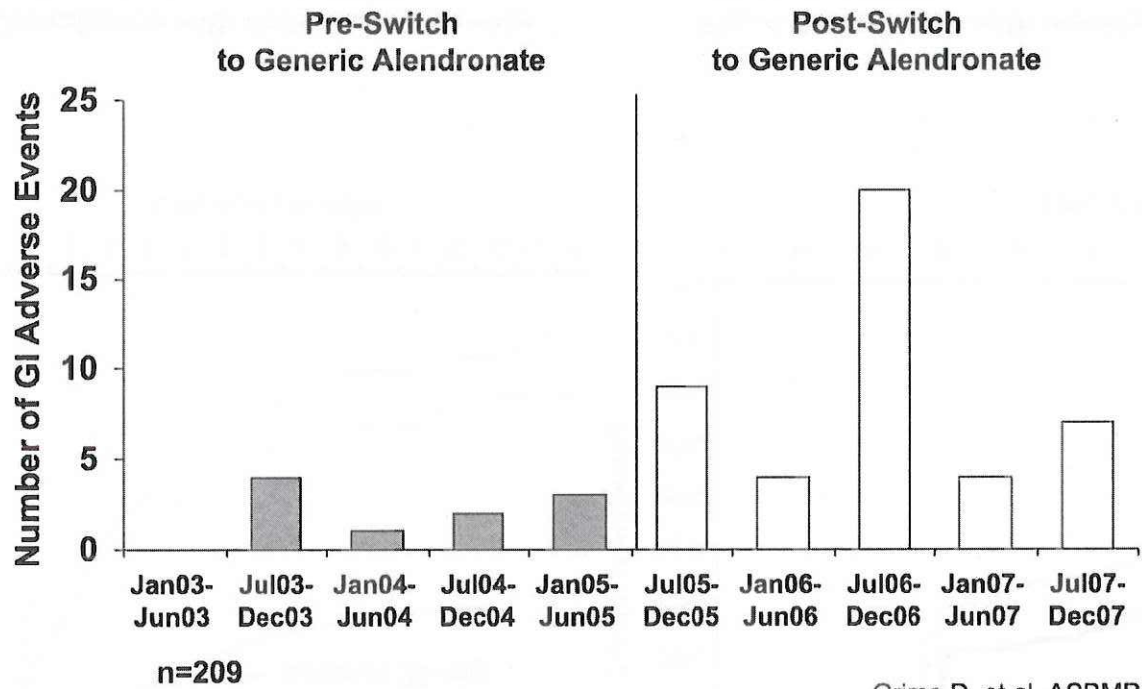


Fig. 4 Compliance with weekly vs monthly bisphosphonates (Cotte et al 2010)



Grima D, et al. ASBMR 2008.

Fig 5. Gastrointestinal side effects of alendronate (number of events reported by 6-month interval)