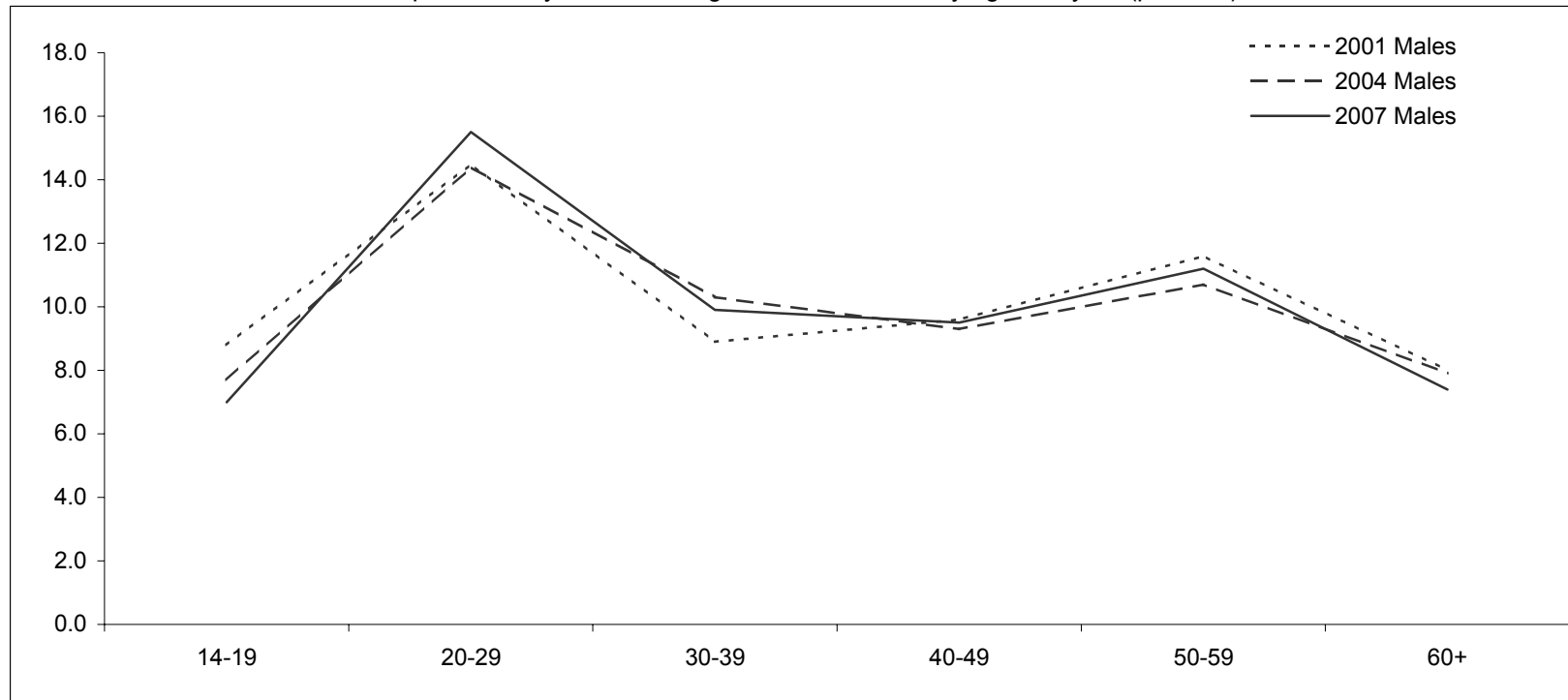


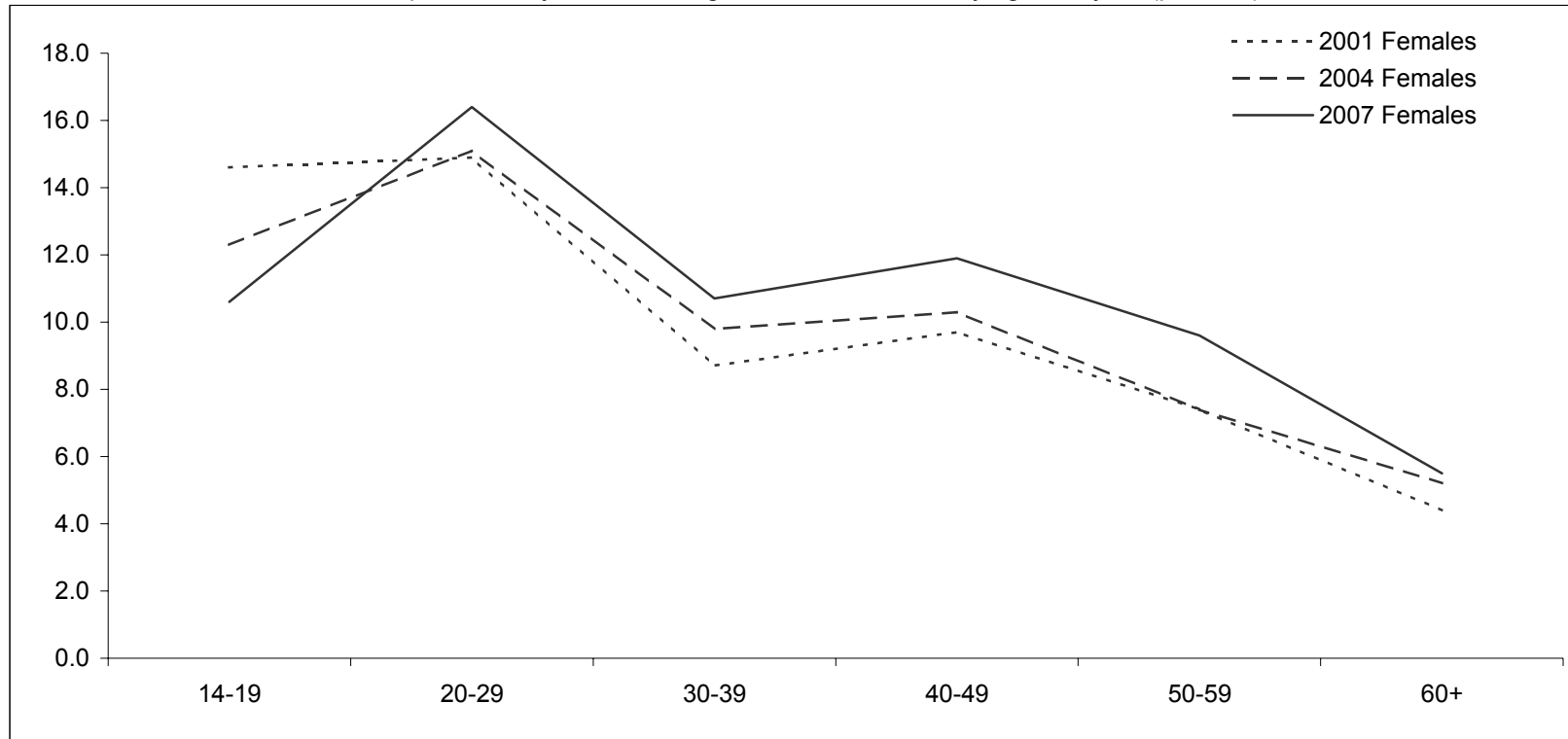
Alcohol consumption, risk of harm in the long term:
Proportion of the population aged 14 years or older, by age and sex

Age Group	Level of risk			Level of risk			Level of risk		
	Risky	High Risk	Total	Risky	High Risk	Total	Risky	High Risk	Total
	2001 Males			2004 Males			2007 Males		
14-19	6.1	2.7	8.8	4.9	2.8	7.7	4.4	2.6	7.0
20-29	9.5	5.0	14.5	8.7	5.7	14.4	9.3	6.2	15.5
30-39	5.8	3.1	8.9	7.5	2.8	10.3	6.2	3.7	9.9
40-49	6.4	3.2	9.6	5.7	3.6	9.3	6.0	3.5	9.5
50-59	7.3	4.3	11.6	6.9	3.8	10.7	6.1	5.1	11.2
60+	5.4	2.6	8.0	5.2	2.7	7.9	4.9	2.5	7.4
14+	6.7	3.5	10.2	6.5	3.6	10.1	6.2	3.9	10.1
	2001 Females			2004 Females			2007 Females		
14-19	9.9	4.7	14.6	8.3	4.0	12.3	6.7	3.9	10.6
20-29	10.9	4.0	14.9	12.2	2.9	15.1	11.0	5.4	16.4
30-39	6.8	1.9	8.7	7.7	2.1	9.8	7.7	3.0	10.7
40-49	7.8	1.9	9.7	8.0	2.3	10.3	9.3	2.6	11.9
50-59	5.9	1.5	7.4	6.0	1.4	7.4	6.9	2.7	9.6
60+	3.7	0.7	4.4	4.3	0.9	5.2	4.7	0.8	5.5
14+	7.2	2.2	9.4	7.5	2.1	9.6	7.6	2.8	10.4
	2001 Persons			2004 Persons			2007 Persons		
14-19	8.0	3.7	11.7	6.6	3.4	10.0	5.6	3.2	8.8
20-29	10.2	4.5	14.7	10.4	4.3	14.7	10.2	5.8	16.0
30-39	6.3	2.5	8.8	7.6	2.4	10.0	7.0	3.3	10.3
40-49	7.1	2.6	9.7	6.9	3.0	9.9	7.7	3.1	10.8
50-59	6.6	2.9	9.5	6.4	2.6	9.0	6.5	3.9	10.4
60+	4.4	1.6	6.0	4.7	1.7	6.4	4.8	1.6	6.4
14+	7.0	2.9	9.9	7.0	2.8	9.8	6.9	3.4	10.3

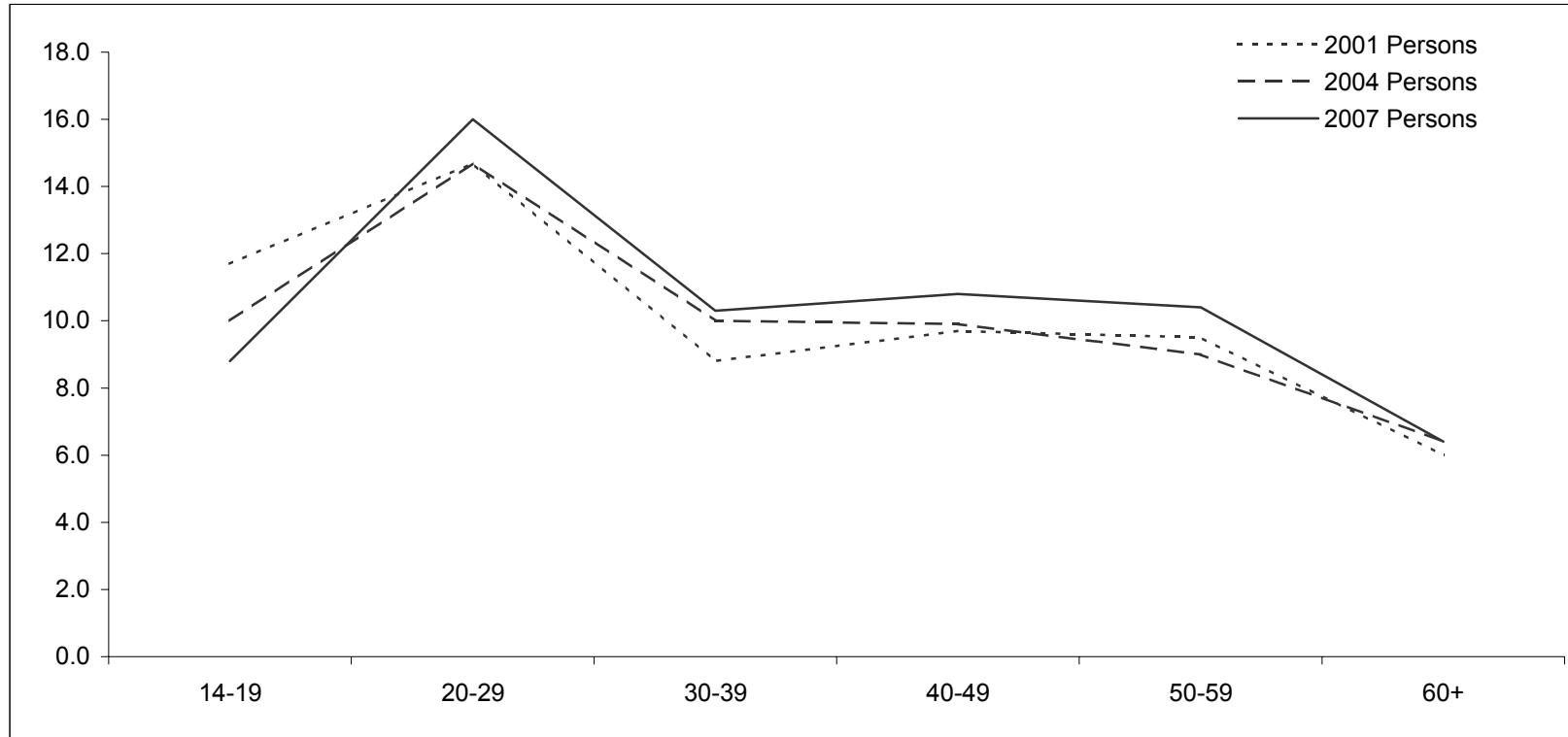
Alcohol consumption at risky levels for long term harm: males by age and year (per cent)



Alcohol consumption at risky levels for long term harm: females by age and year (per cent)



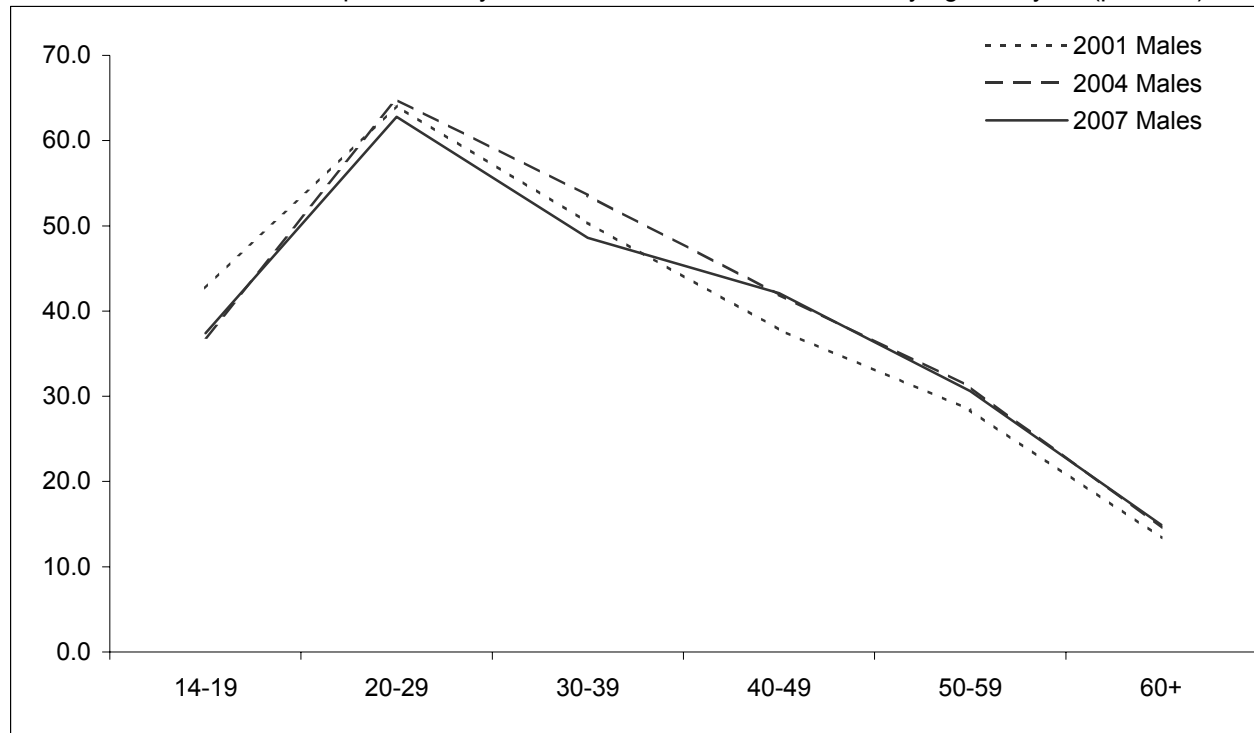
Alcohol consumption at risky levels for long term harm: persons by age and year (per cent)



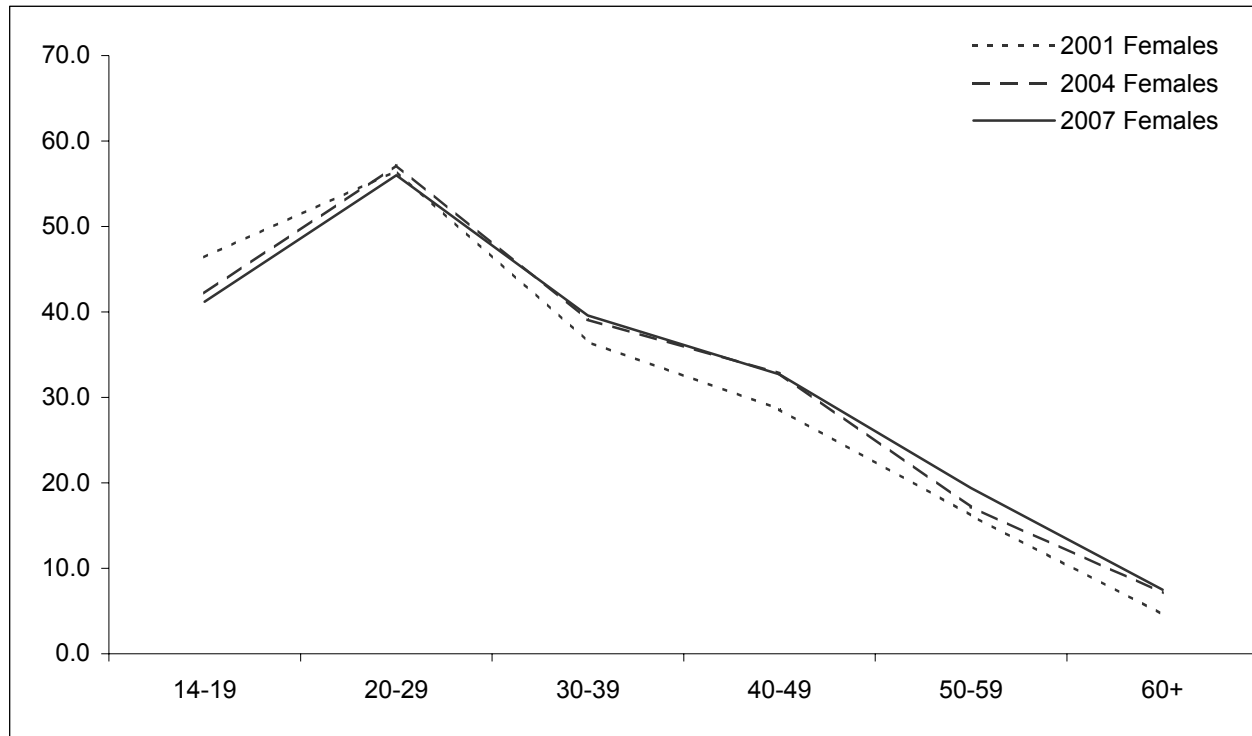
Alcohol consumption, risk of harm in the short term:
 Proportion of the population aged 14 years or older, by age and sex

Age Group	Risky Drinking At Least Yearly	Risky Drinking At Least Yearly	Risky Drinking At Least Yearly	Average Increase / Decrease
	(per cent)			
	2001 Males	2004 Males	2007 Males	
14-19	42.7	36.9	37.4	-2.7
20-29	64.1	64.8	62.8	-0.6
30-39	50.4	53.6	48.6	-0.9
40-49	37.8	41.9	42.1	2.2
50-59	28.4	31.1	30.6	1.1
60+	13.4	14.6	14.9	0.8
14+	39.3	40.3	38.7	-0.3
	2001 Females	2004 Females	2007 Females	
14-19	46.4	42.2	41.2	-2.6
20-29	56.5	57.2	56.0	-0.3
30-39	36.5	39.1	39.6	1.6
40-49	28.6	32.8	32.7	2.1
50-59	16.2	17.2	19.4	1.6
60+	4.6	7.1	7.5	1.5
14+	29.6	30.7	30.5	0.5
	2001 Persons	2004 Persons	2007 Persons	
14-19	44.6	39.5	39.2	-2.7
20-29	60.4	61.0	59.4	-0.5
30-39	43.3	46.3	44.0	0.4
40-49	33.3	37.3	37.4	2.1
50-59	22.4	24.1	25.0	1.3
60+	8.7	10.6	11.0	1.2
14+	34.4	35.4	34.6	0.1

Alcohol consumption at risky levels for short term harm: males by age and year (per cent)



Alcohol consumption at risky levels for short term harm: females by age and year (per cent)



Alcohol consumption at risky levels for short term harm: persons by age and year (per cent)

