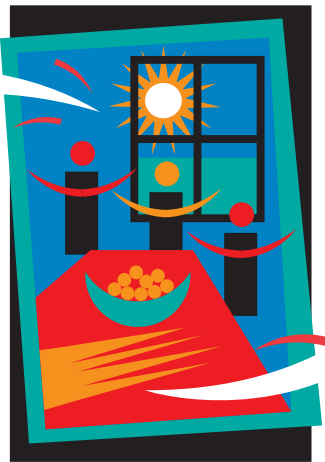




Australian Government
Department of Immigration and
Multicultural and Indigenous Affairs

SPECIAL PREPARATORY PROGRAM



The Australian Government recognises that not all humanitarian entrants eligible for tuition under the Adult Migrant English Program (AMEP) are ready to learn in a formal classroom environment. They may be recovering from traumatic pre-migration experiences or have had limited schooling prior to migration. The Special Preparatory Program (SPP) was established to help these entrants make the transition to their new life in Australia.

WHAT IS THE SPECIAL PREPARATORY PROGRAM?

The SPP is an English language tuition program specifically tailored to suit eligible humanitarian entrants who may have difficulty adapting to the more formal environment offered by the AMEP. The SPP is offered to eligible humanitarian entrants before they commence AMEP classes. SPP tuition is given by qualified teachers experienced in dealing with the special needs of humanitarian entrants.

WHO IS ELIGIBLE FOR THE SPECIAL PREPARATORY PROGRAM?

Humanitarian entrants who hold permanent visas, and are assessed by an AMEP Service Provider as having special needs are eligible for the SPP.

Up to 100 hours of English language tuition may be provided to humanitarian entrants 18 years and older, who have had difficult pre-migration experiences, eg torture and trauma.

Up to 400 hours of English language tuition may be provided to humanitarian entrants aged between 16 and 24 years who have low levels of schooling, that is, between 0 and 7 years of formal schooling.

Access to the 400 hours of English language tuition for eligible clients between the ages of 16 and 18 years will be subject to confirmation that they are unable to be placed in an appropriate school program.

The SPP also provides students with information about other support and settlement services.

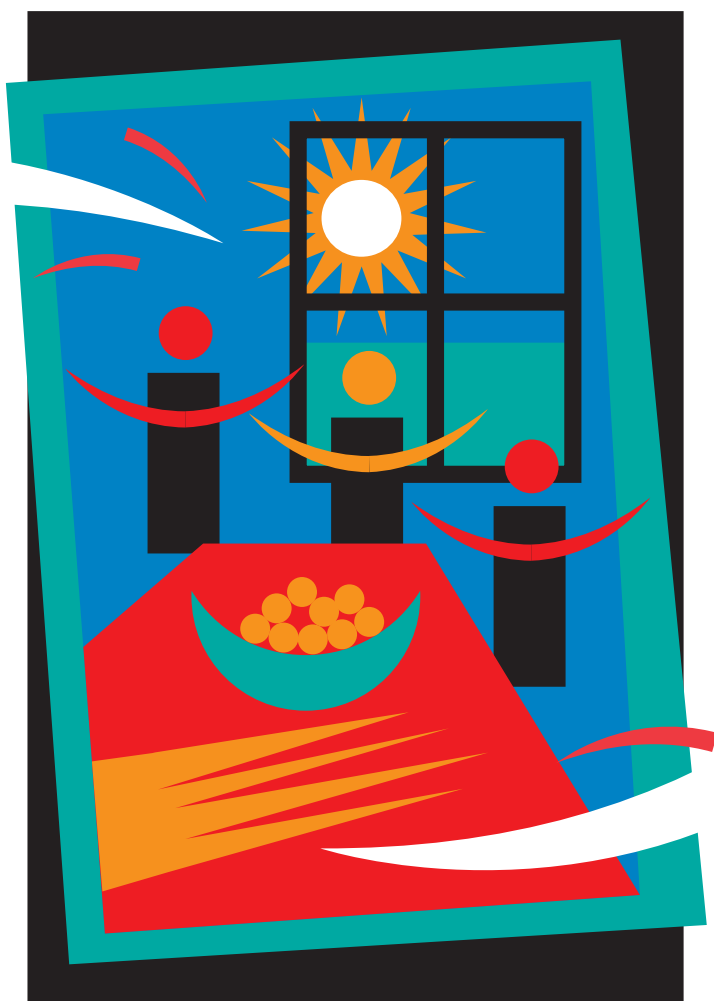
SPP English language tuition is offered in an informal environment, often in a community setting, where students who have had similar experiences can become familiar with the learning process before they go on to the more formal learning environment of the AMEP.

WHAT HAPPENS AFTER THE SPP?

When students have completed their SPP tuition, they may access their legislative entitlement to English language tuition of up to 510 hours or the point at which they achieve functional English.

HOW TO APPLY FOR THE SPECIAL PREPARATORY PROGRAM.

To find out more about SPP English language tuition, contact an AMEP Service Provider.



For details about the nearest AMEP Service Provider, call the DIMIA enquiry line on 131 881 for the cost of a local call from anywhere in Australia.

If you require interpreting services to speak with an AMEP Service Provider, contact the Translating and Interpreting Service on 131 450 for the cost of a local call from anywhere in Australia. This service is available 24 hours a day, 7 days a week.

FIND OUT MORE ABOUT THE ADULT MIGRANT ENGLISH PROGRAM.

The Special Preparatory Program is part of the Adult Migrant English Program funded by the Commonwealth Department of Immigration and Multicultural and Indigenous Affairs (DIMIA).

For more information about the AMEP, visit our website www.immi.gov.au/amep/