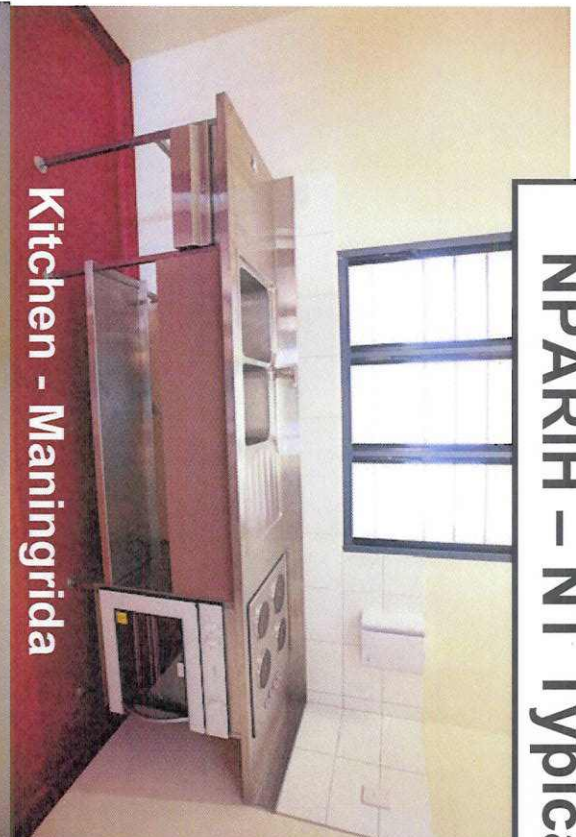
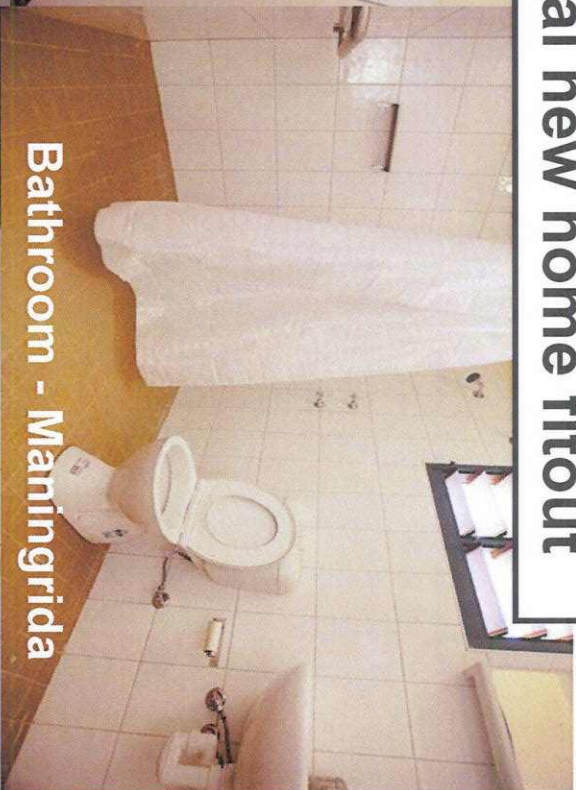


NPARIH – NT Typical new home fitout



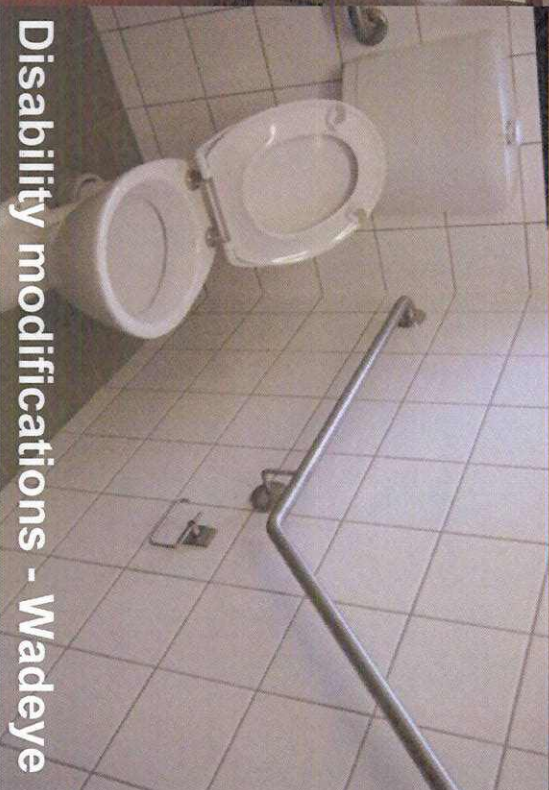
Kitchen - Maningrida



Bathroom - Maningrida

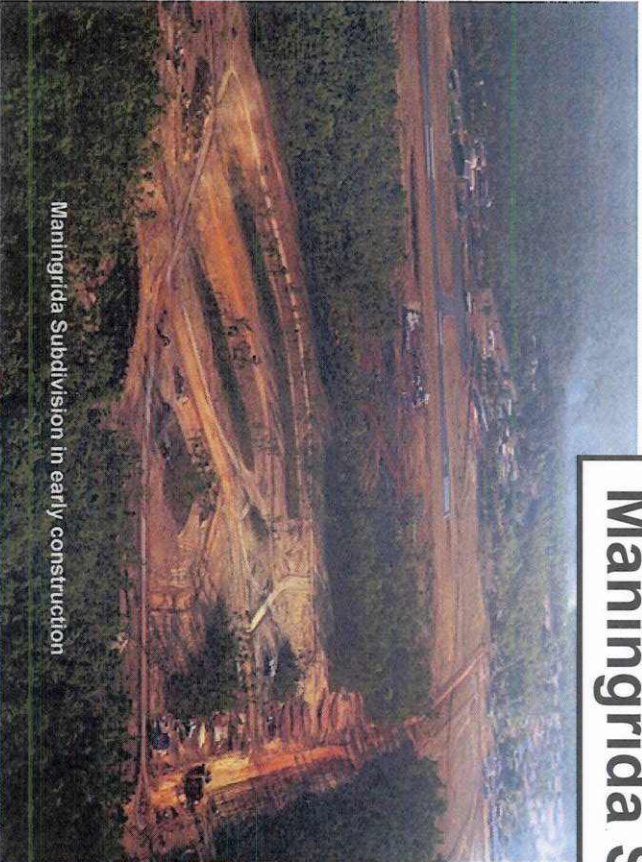


Pantry locker – Alice Springs

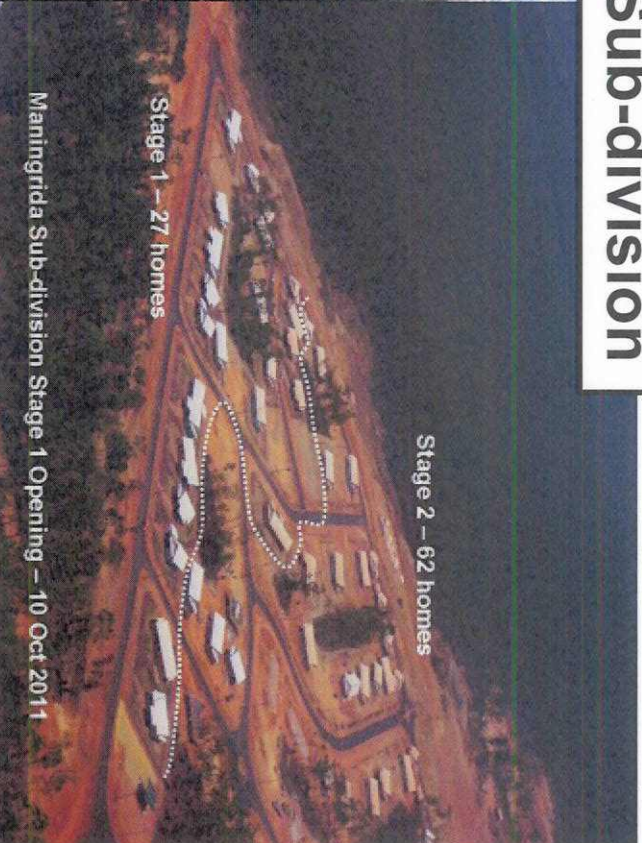


Disability modifications - Wadeye

Maningrida Sub-division



Maningrida Subdivision in early construction



Stage 1 – 27 homes

Stage 2 – 62 homes

Maningrida Sub-division Stage 1 Opening – 10 Oct 2011



Laying pipe in Maningrida

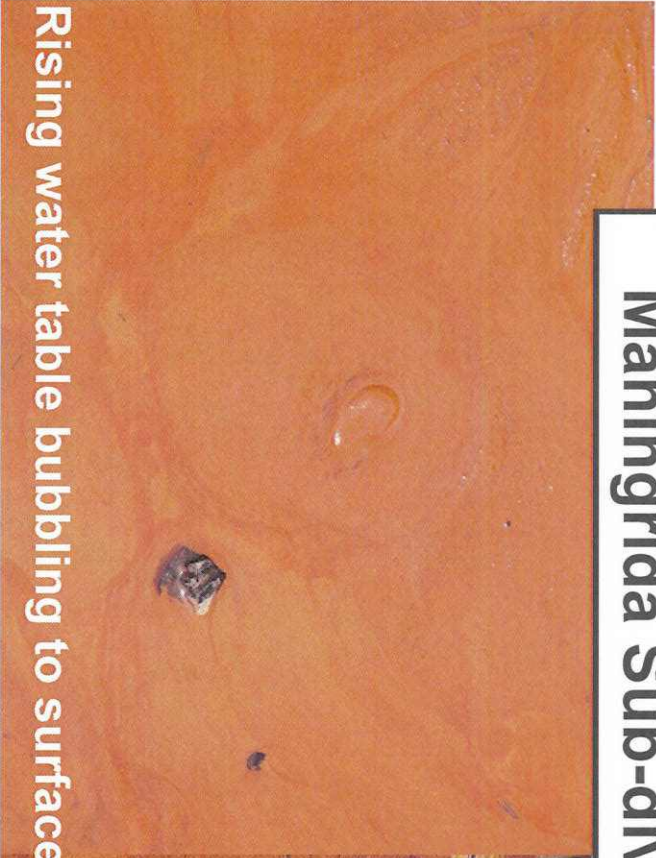


Electrical reticulation in Maningrida Sub-division

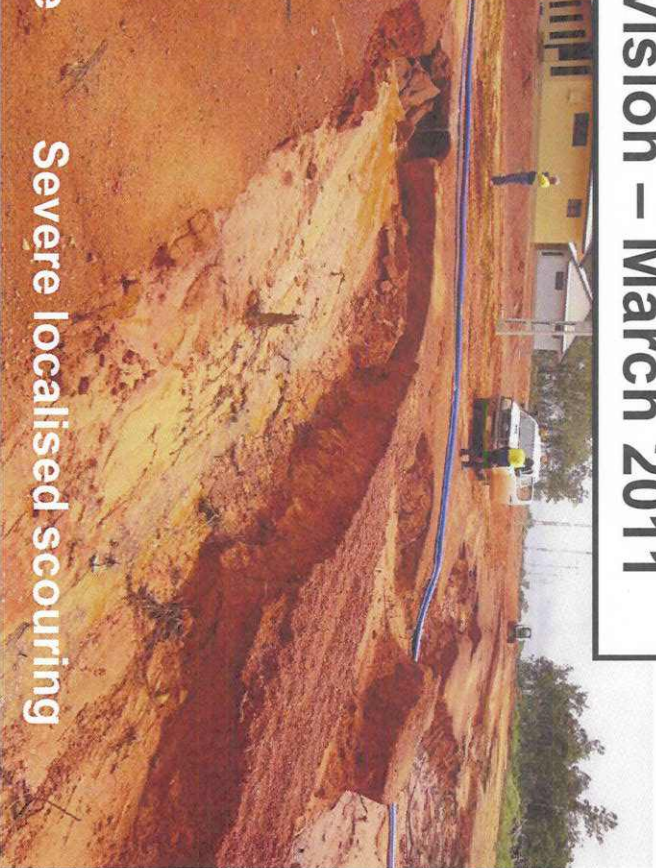


Sealing commencing in the Maningrida Sub-division

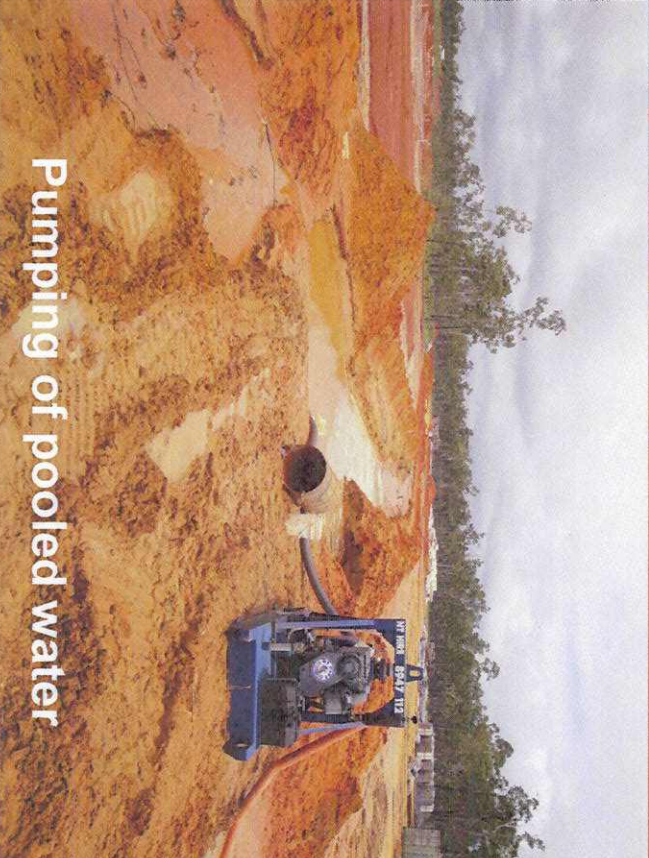
Maningrida Sub-division – March 2011



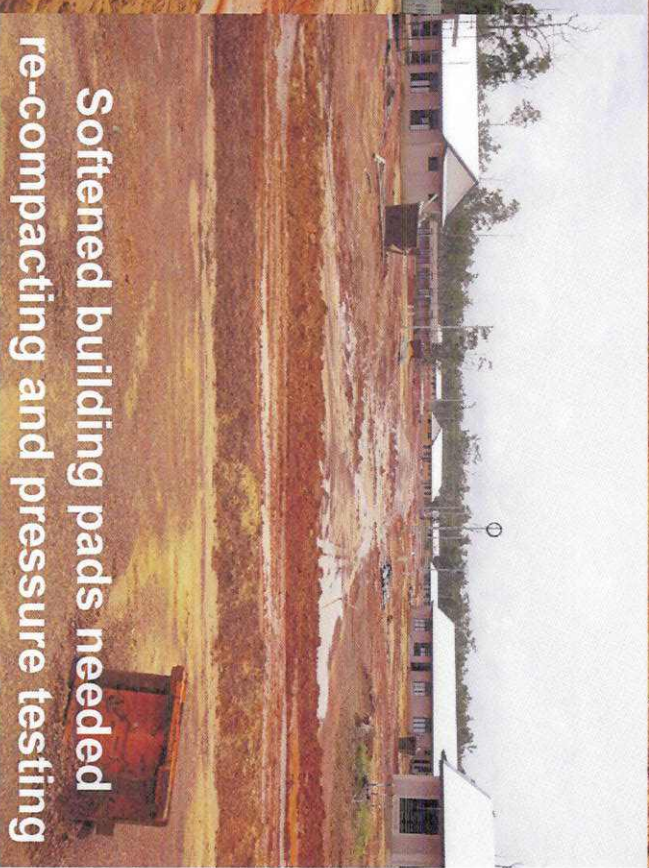
Rising water table bubbling to surface



Severe localised scouring



Pumping of pooled water



Softened building pads needed
re-compacting and pressure testing

Example QA photo record - Maningrida

BEFORE



BACK ELEVATION



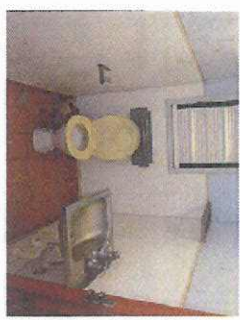
LAUNDRY



KITCHEN



SHOWER 2



WC 2



SHOWER 1



WC 1

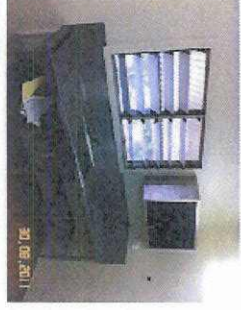
AFTER



BACK ELEVATION



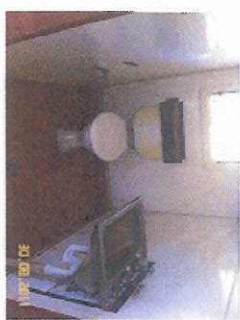
LAUNDRY



KITCHEN



KITCHEN



WC 2



SHOWER 1



SHOWER 2



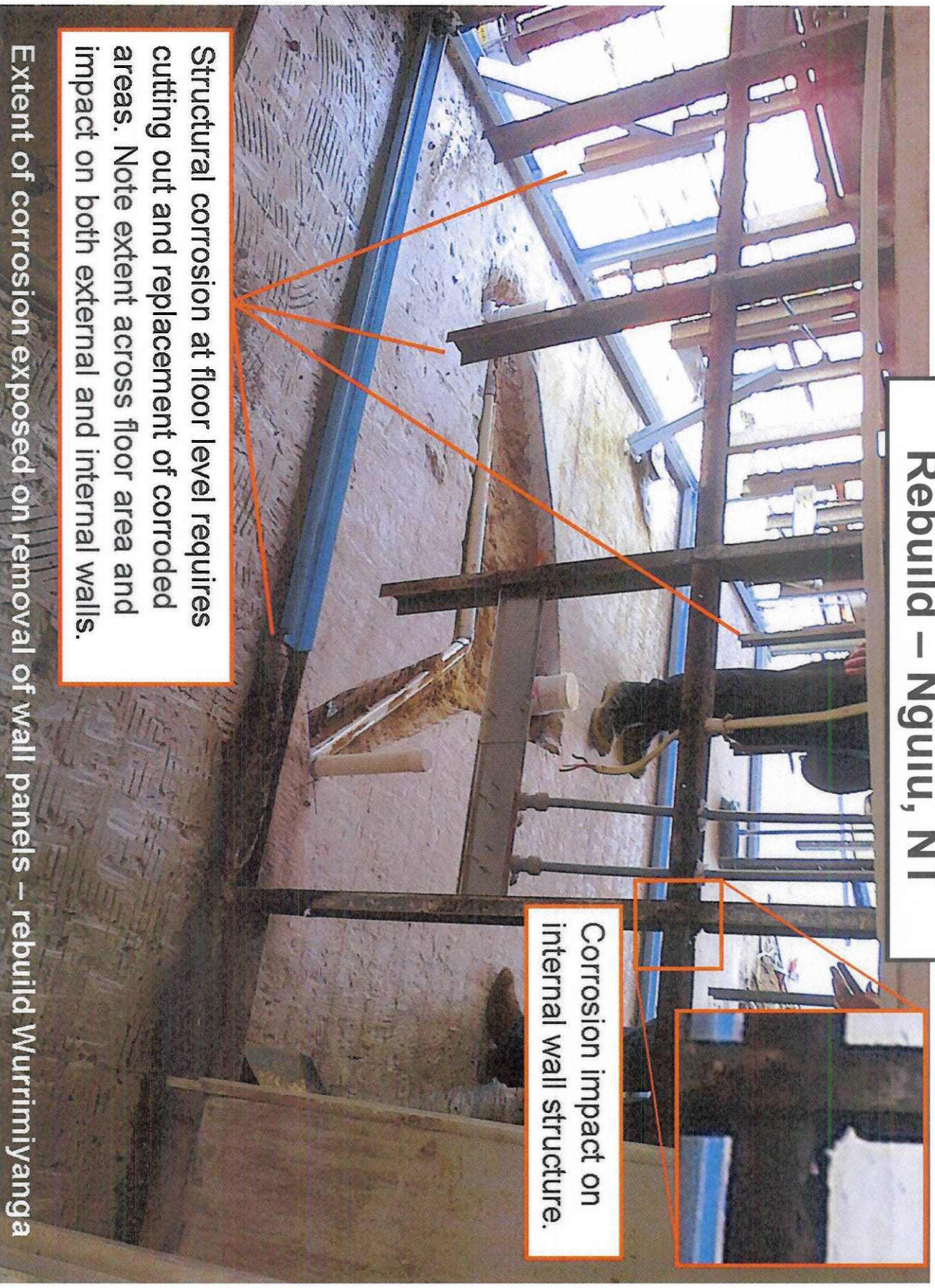
WC 1

Rebuild – Nguuiu, NT

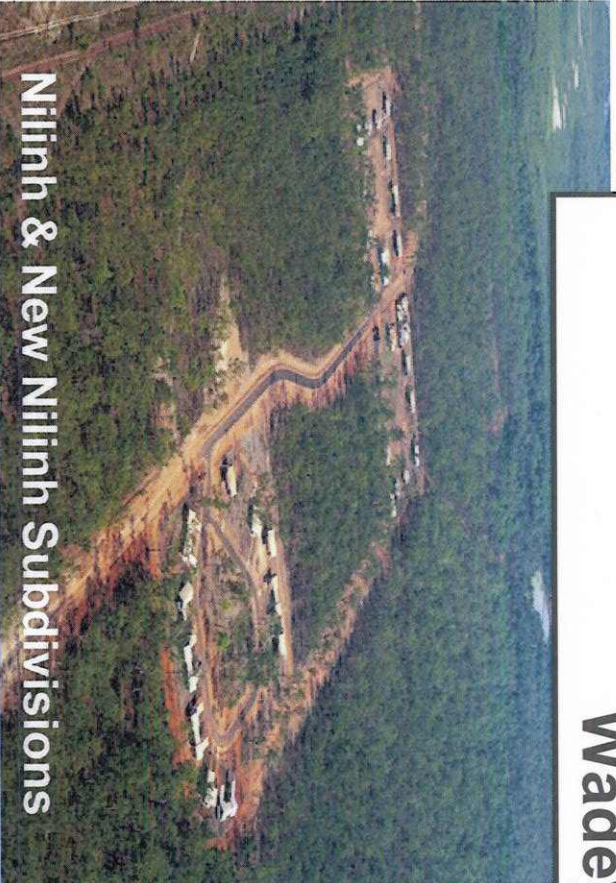
Corrosion impact on internal wall structure.

Structural corrosion at floor level requires cutting out and replacement of corroded areas. Note extent across floor area and impact on both external and internal walls.

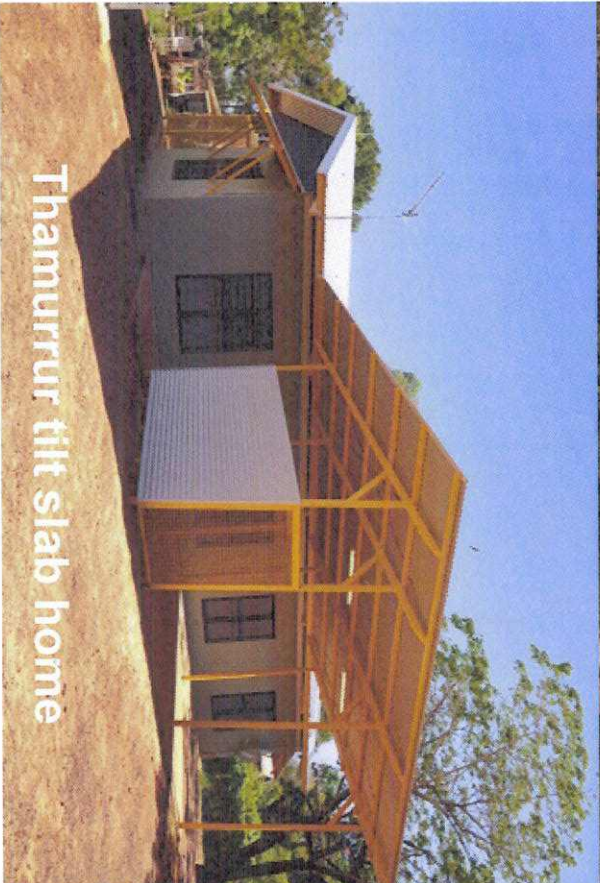
Extent of corrosion exposed on removal of wall panels – rebuild Wurrimiyannga



Wadeye



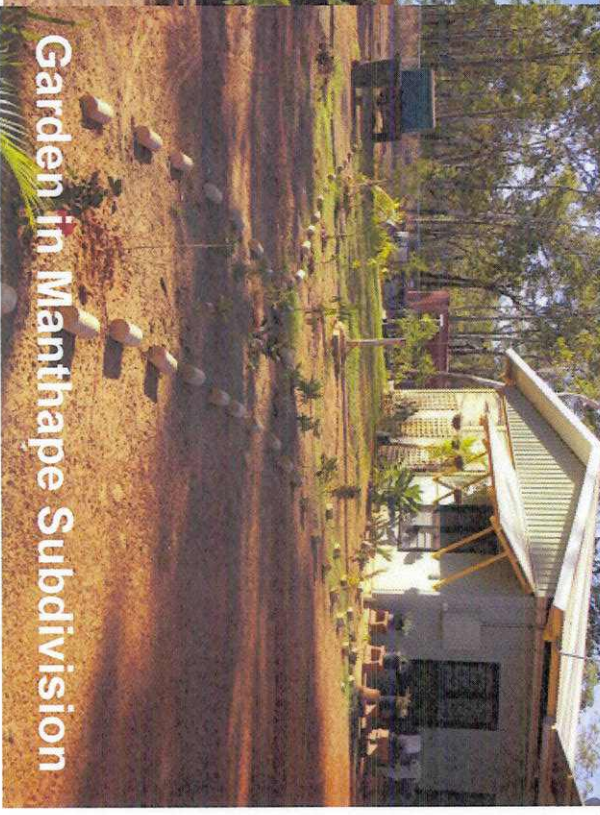
Niilih & New Niilih Subdivisions



Thamurrur tilt slab home

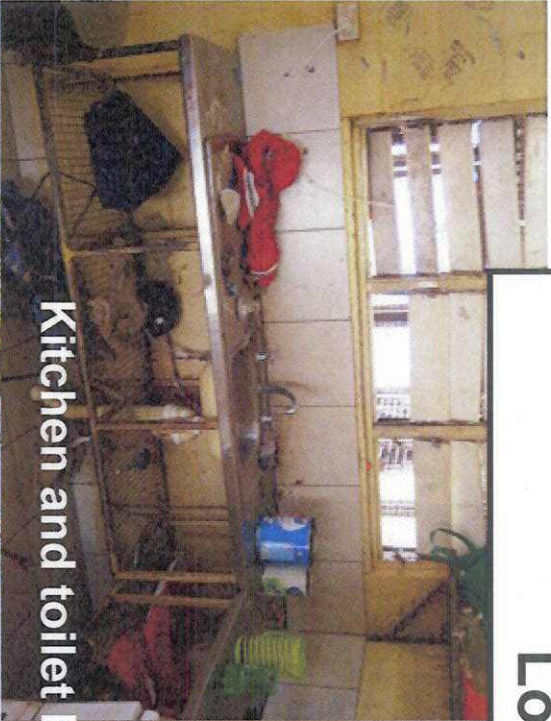


One of 26 entries in the Public Housing Best Garden Competition

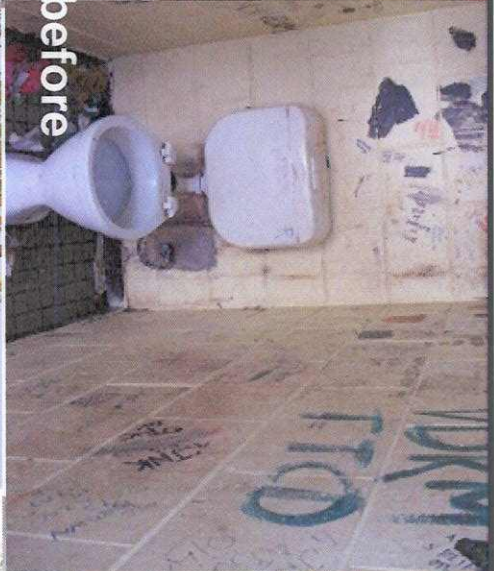


Garden in Manthape Subdivision

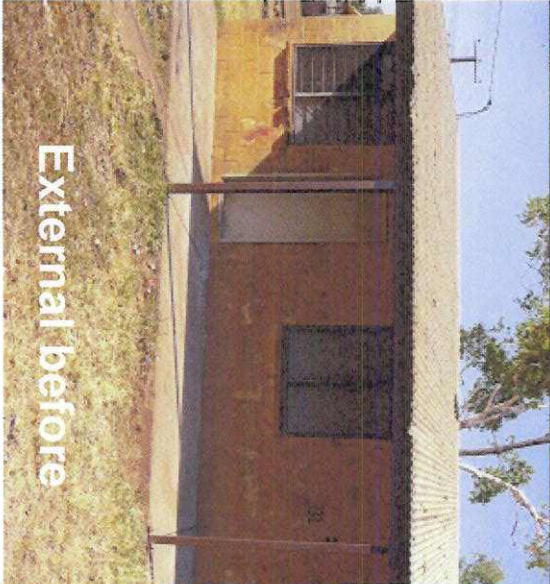
Lot 232 - Wadeye



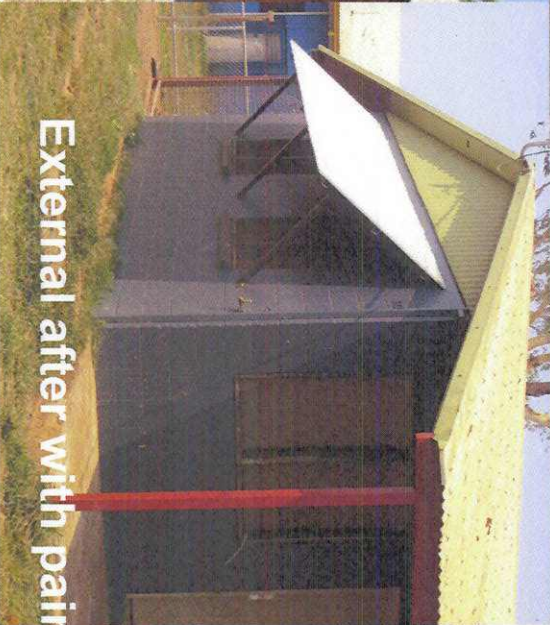
Kitchen and toilet before



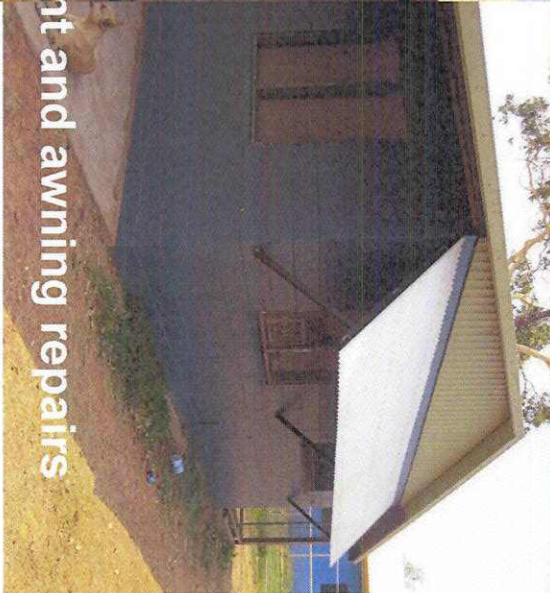
Pest damage



External before

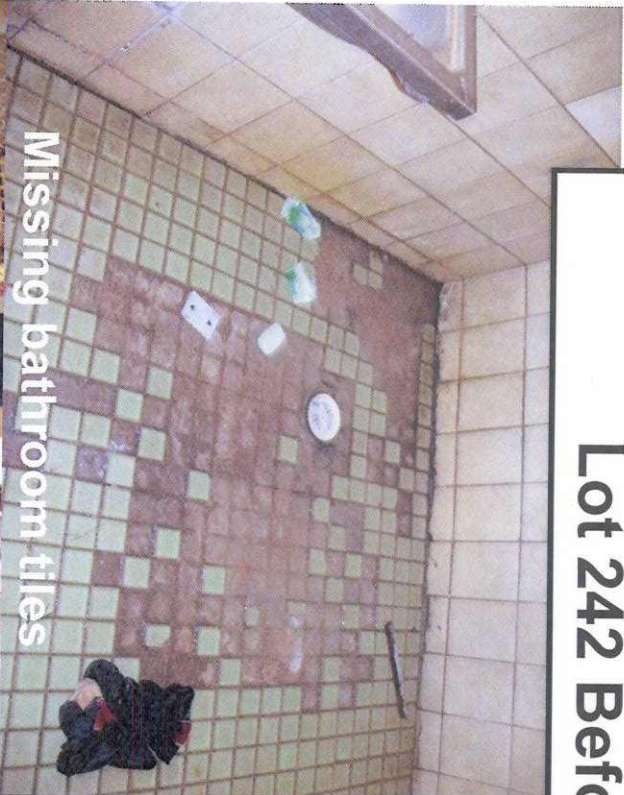


External after with paint and awning repairs



External after with paint and awning repairs

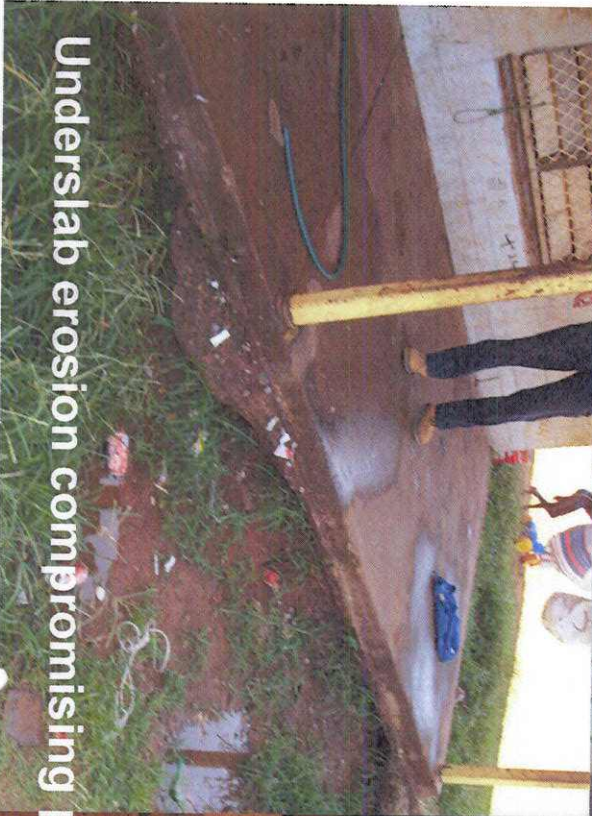
Lot 242 Before - Wadeye



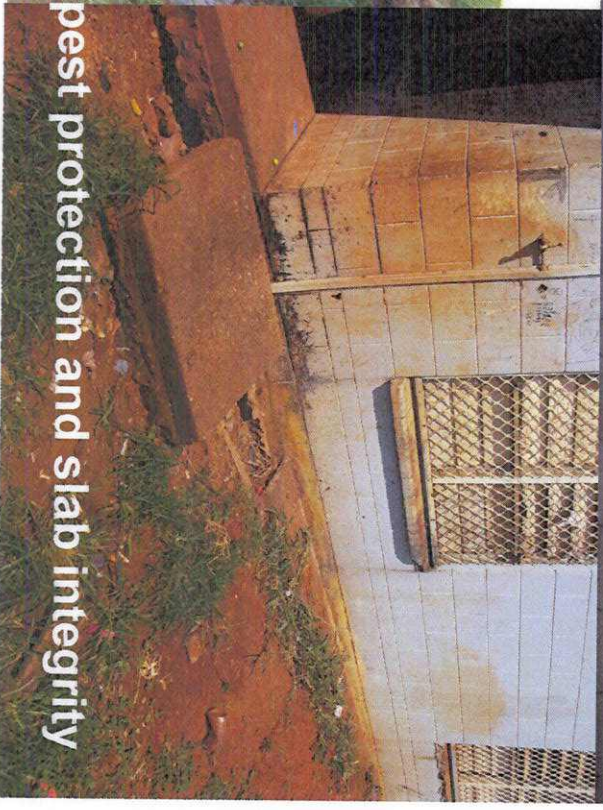
Missing bathroom tiles



Kitchen



Underslab erosion compromising pest protection and slab integrity



Underslab erosion compromising pest protection and slab integrity

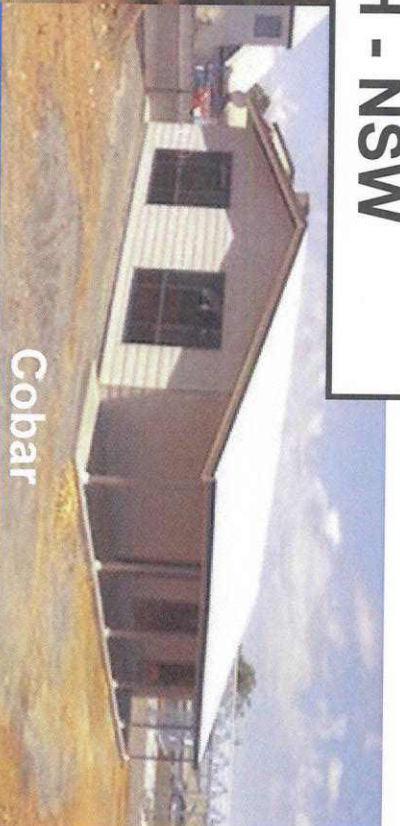
NPARIH - NSW



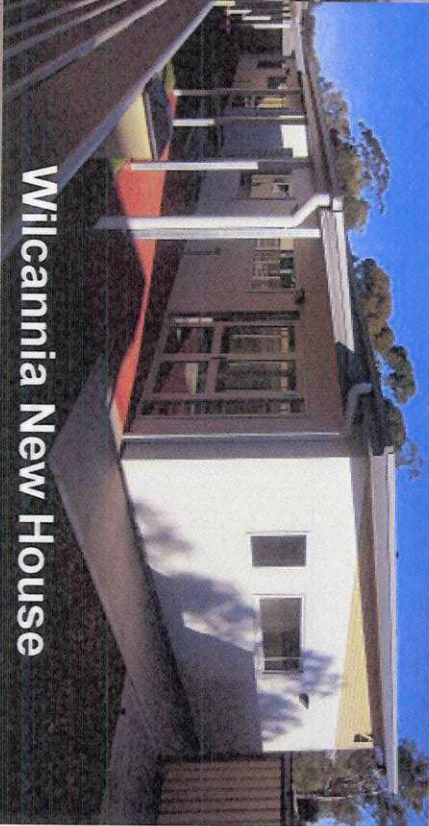
Nyngan



Walgett New House



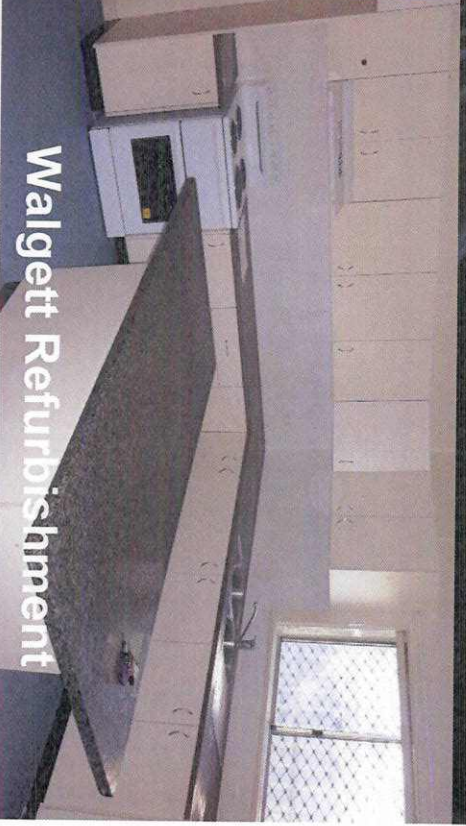
Cobar



Wilcannia New House

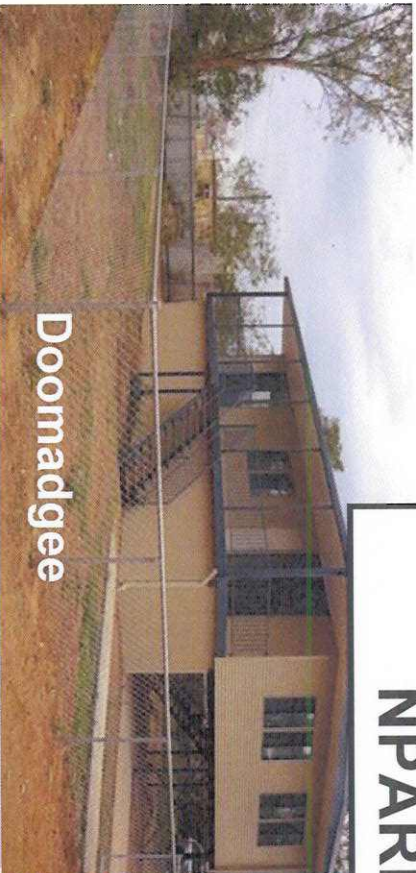


Lightning Ridge

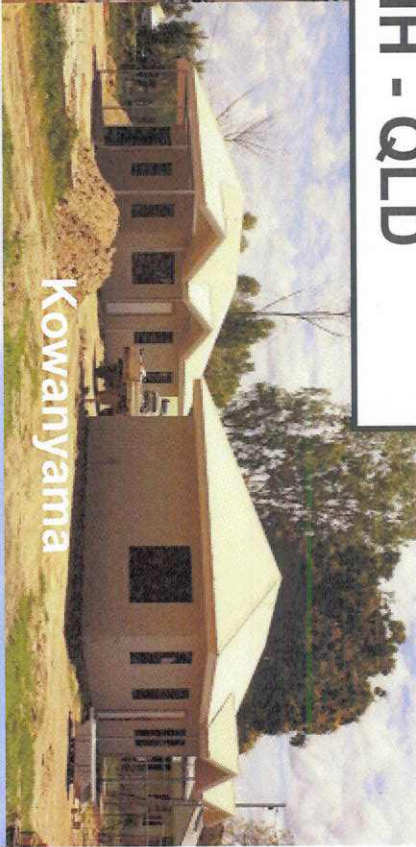


Walgett Refurbishment

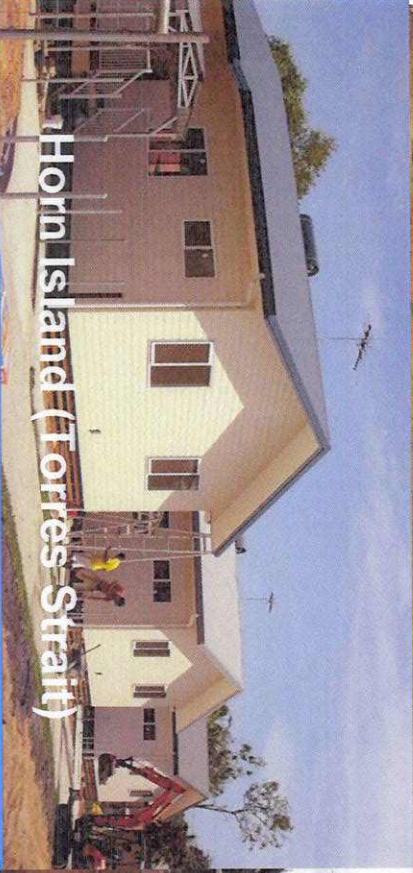
NPARIH - QLD



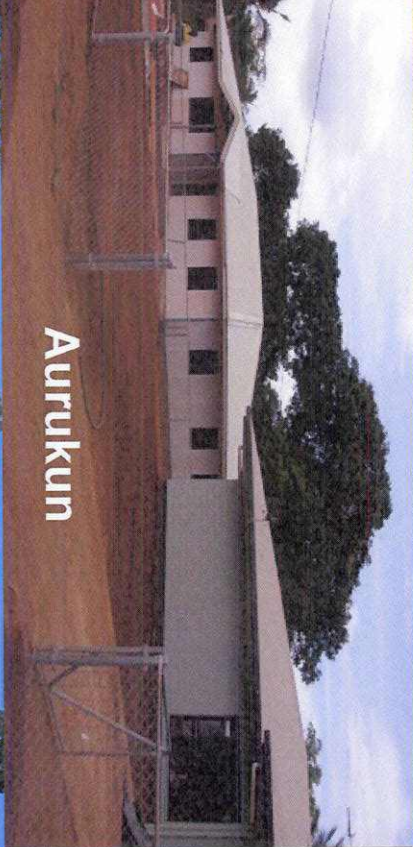
Doomadgee



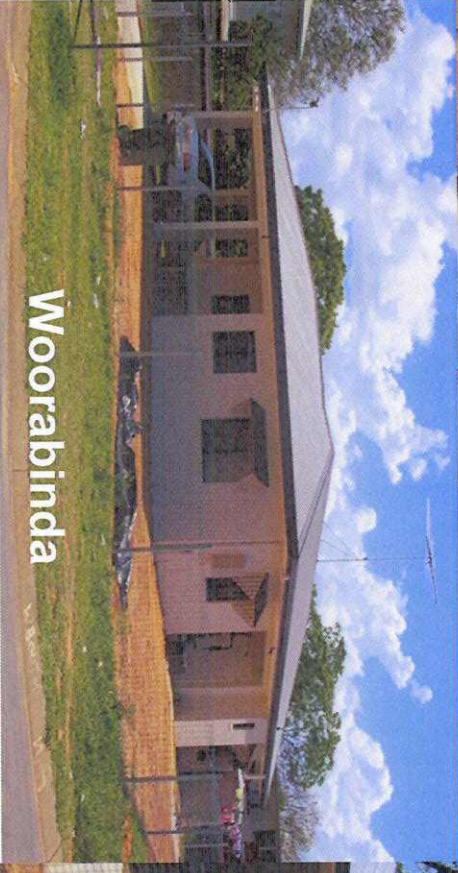
Kowanyama



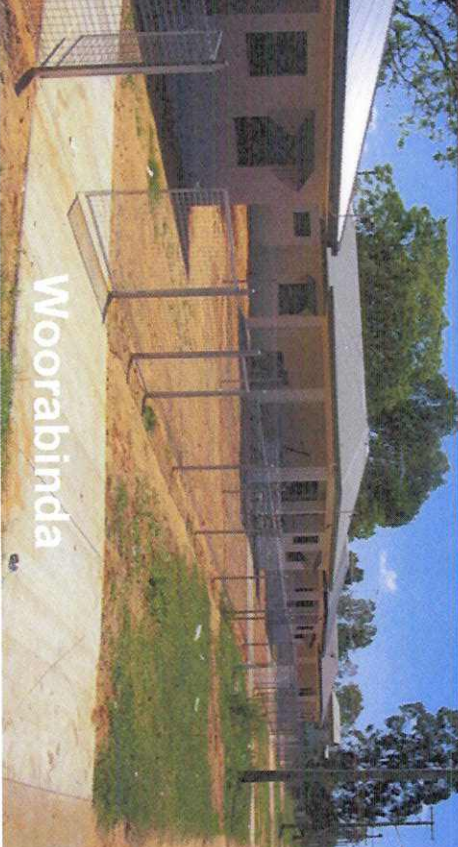
Horn Island (Torres Strait)



Aurukun

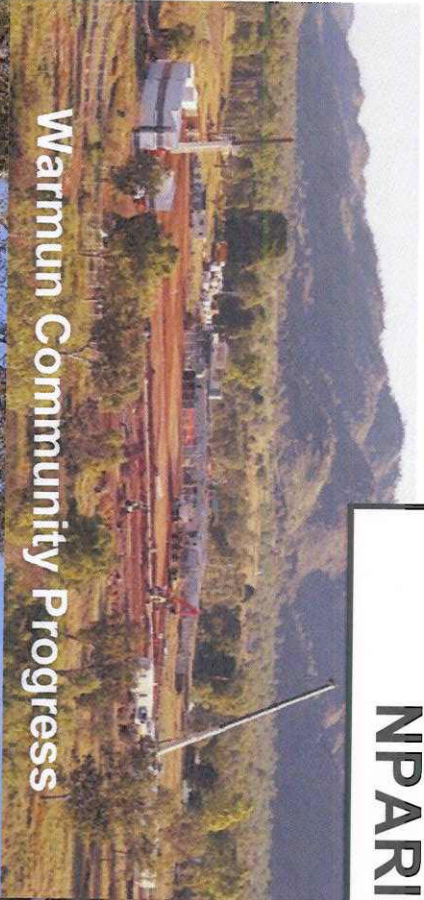


Woorabinda

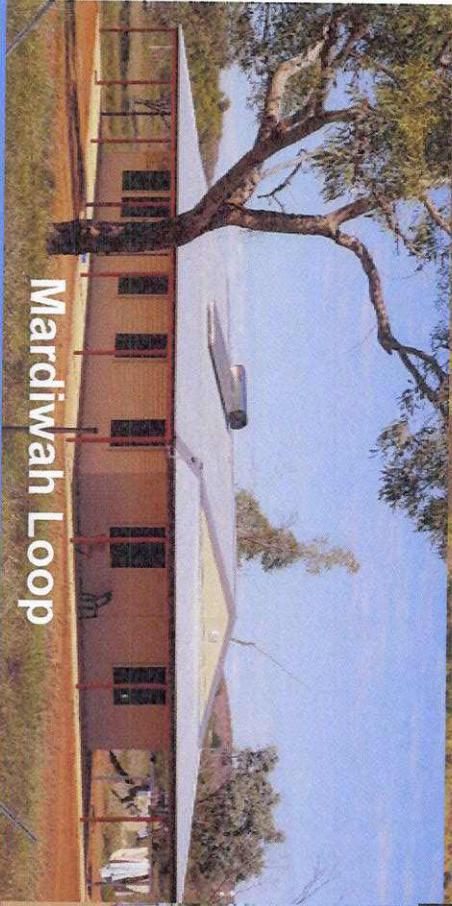


Woorabinda

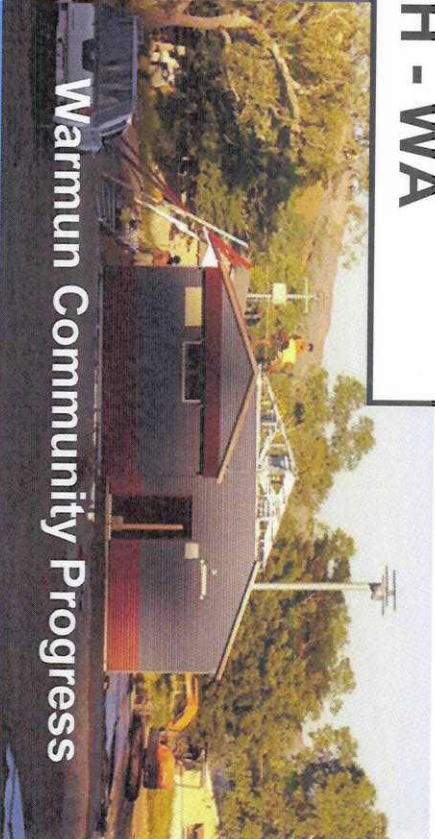
NPARIH - WA



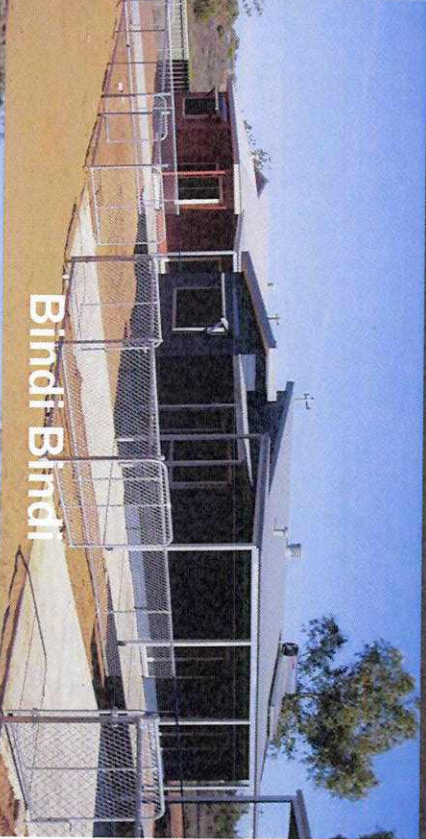
Warmun Community Progress



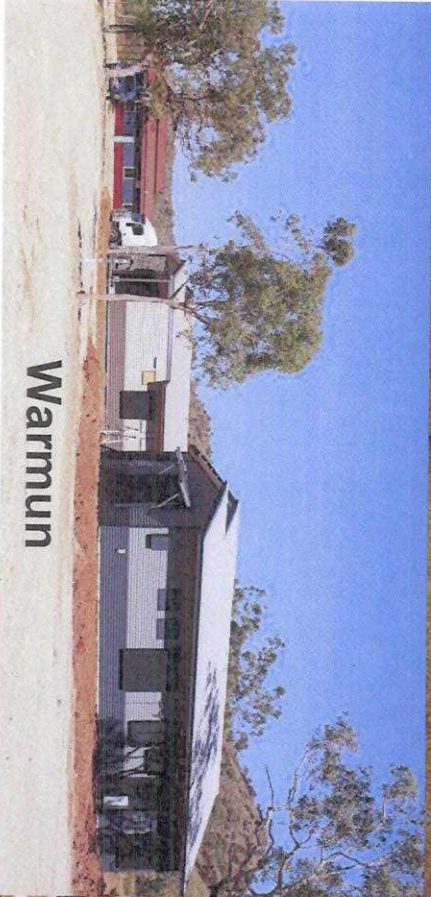
Mardiwah Loop



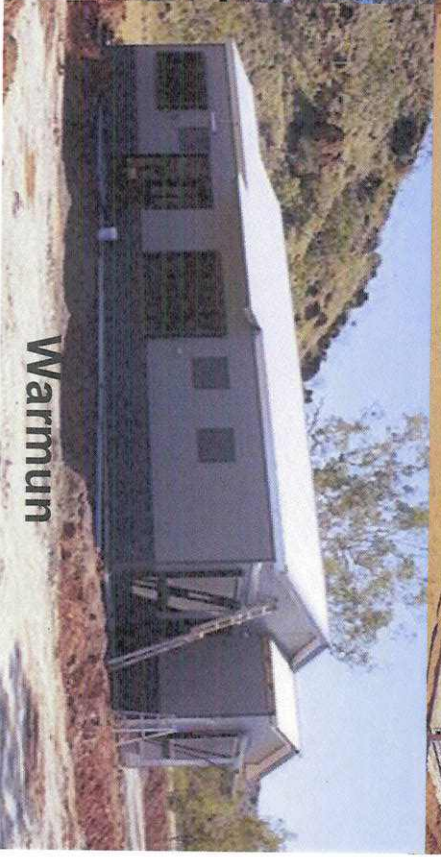
Warmun Community Progress



Bindi Bindi

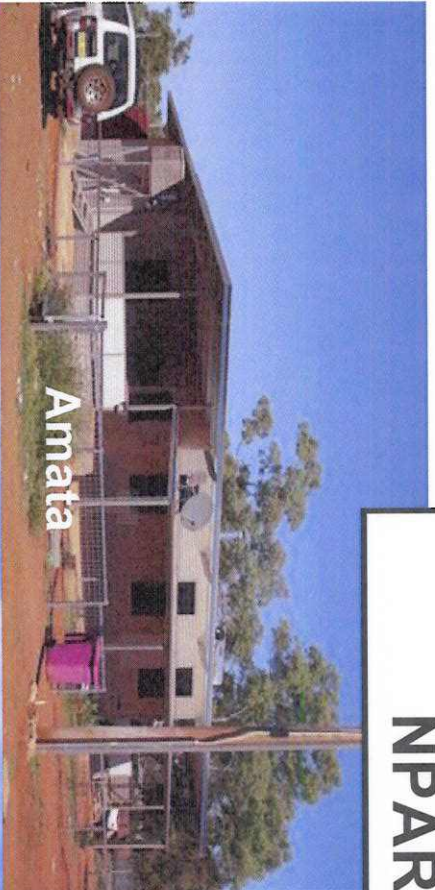


Warmun



Warmun

NPARIH - SA



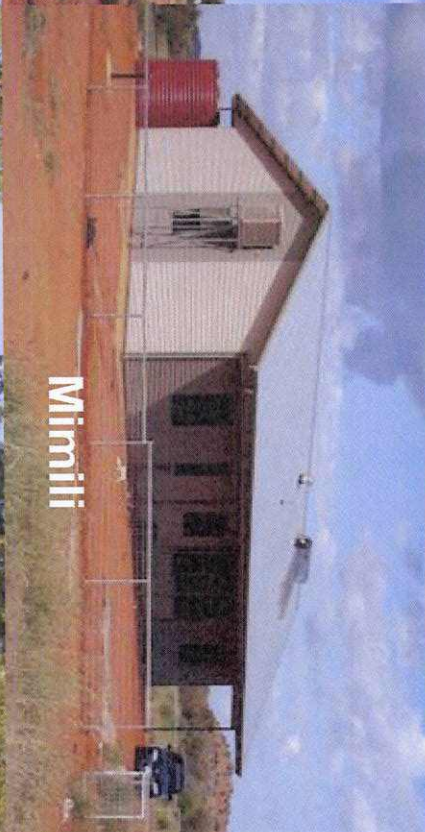
Amata



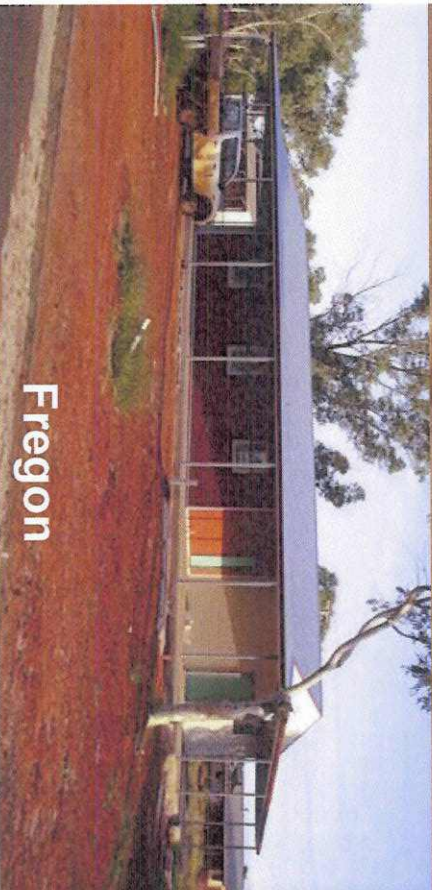
Amata



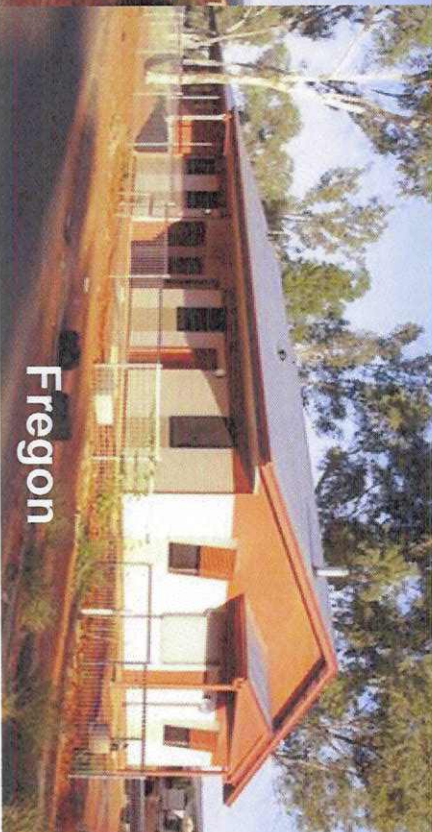
Mimili



Mimili



Fregon

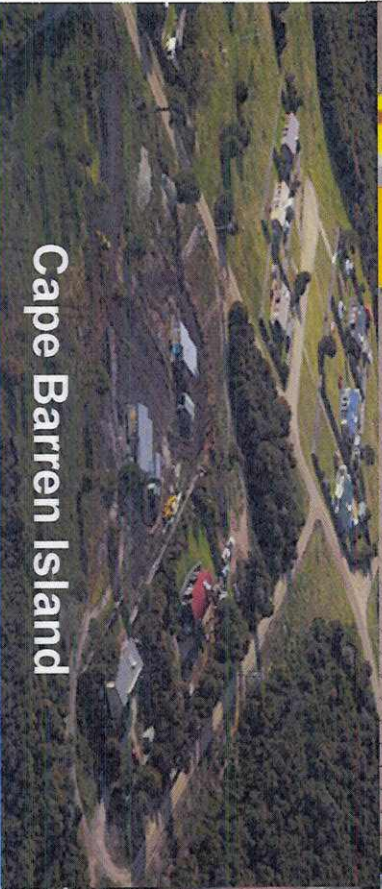


Fregon

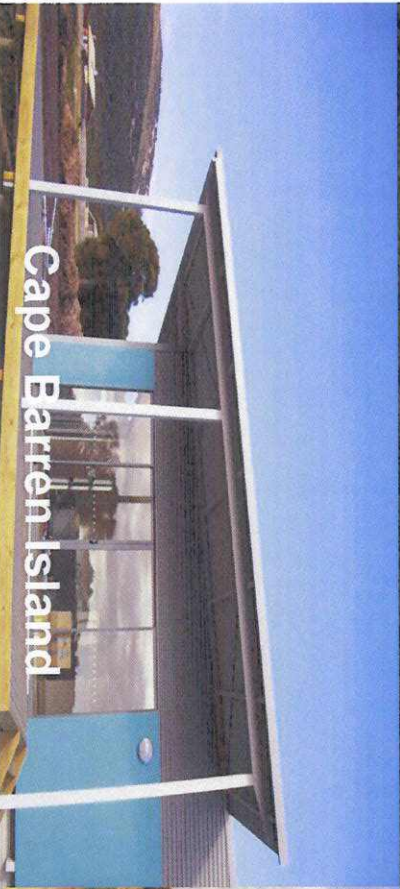
NPARIH - TAS



Cape Barren Island



Cape Barren Island

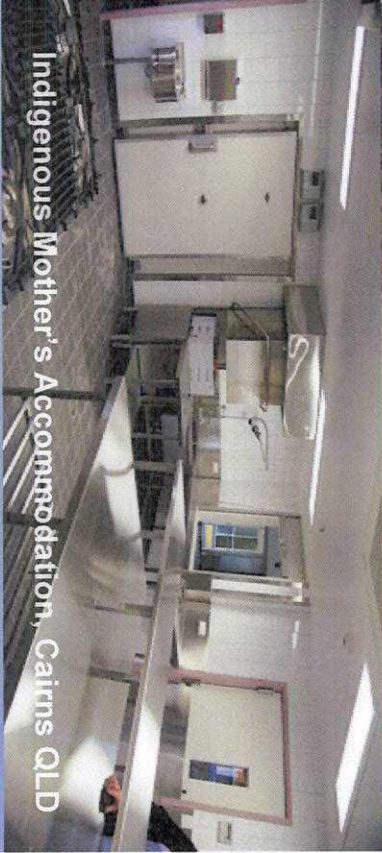


Cape Barren Island

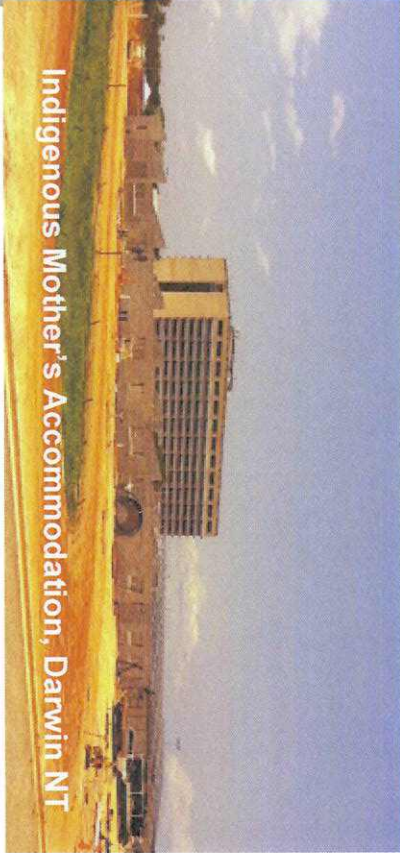
Indigenous Mother's Accommodation



Indigenous Mother's Accommodation, Cairns QLD

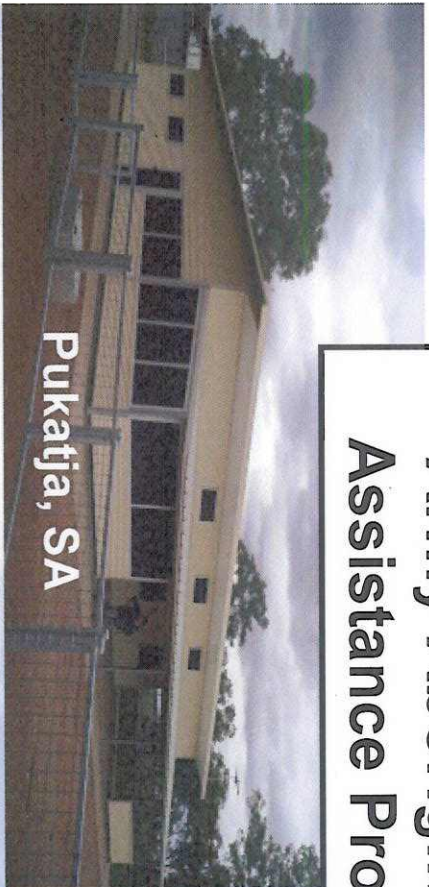


Indigenous Mother's Accommodation, Cairns QLD

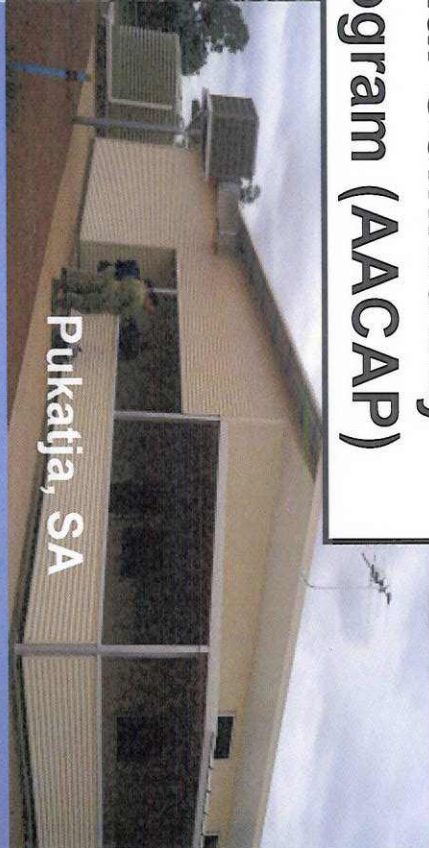


Indigenous Mother's Accommodation, Darwin NT

Army Aboriginal Community Assistance Program (AACAP)



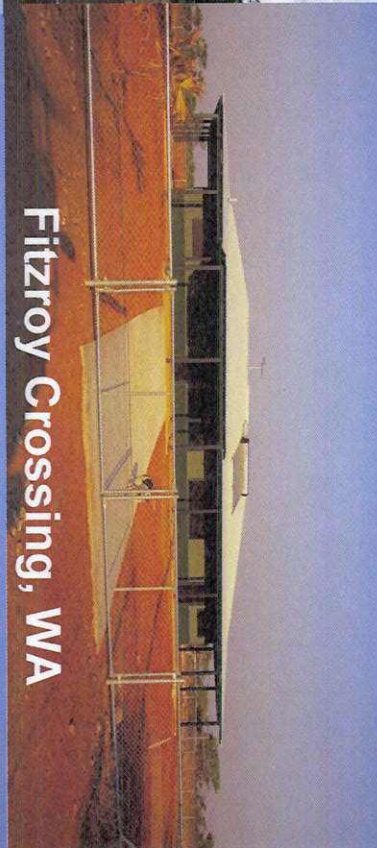
Pukatja, SA



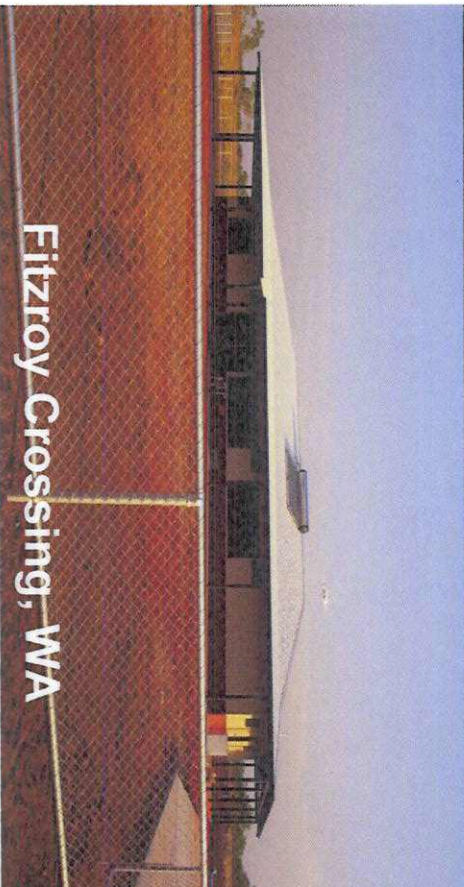
Pukatja, SA



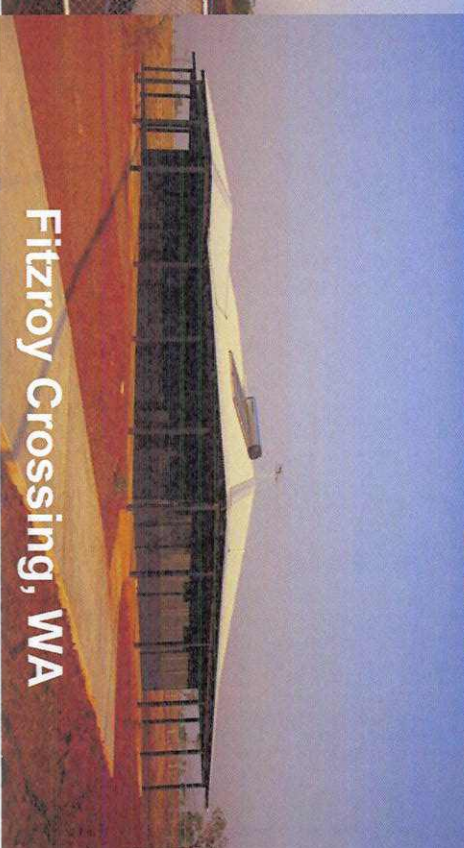
Pukatja, SA



Fitzroy Crossing, WA

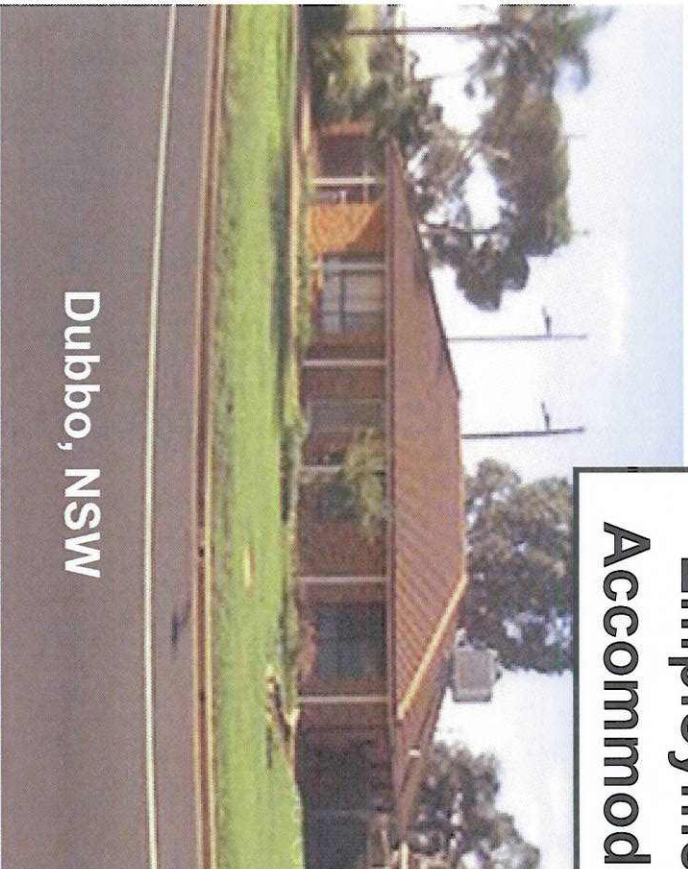


Fitzroy Crossing, WA

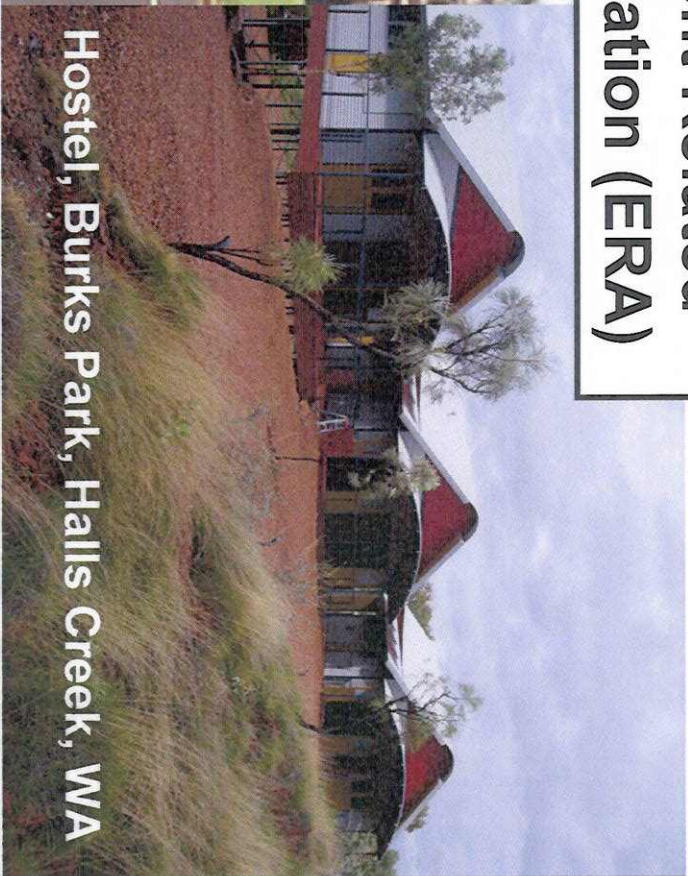


Fitzroy Crossing, WA

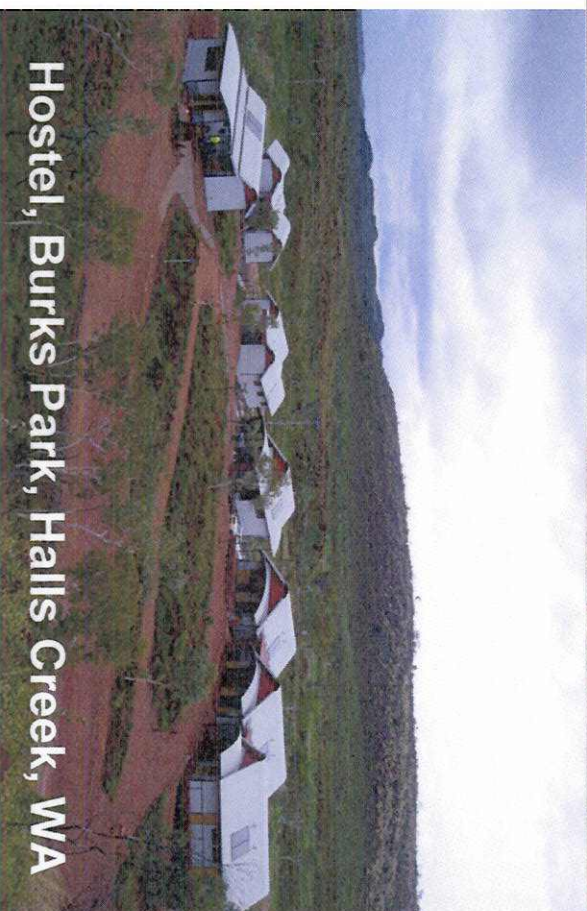
**Employment Related
Accommodation (ERA)**



Dubbo, NSW



Hostel, Burks Park, Halls Creek, WA



Hostel, Burks Park, Halls Creek, WA