

The Local News – Monday February 25 2013

- process, hence delays in delivery of NASH certificates and passphrases
- Compliant software includes the latest versions of: Medical Director 3, Genie, ZedMed, MedTech32, iSoft Practix
- Best Practice are due to release compliant software this week

ePiP tips

- Secure Messaging (Requirement 2) – make sure you turn on your 'send' functionality to ensure compliance with this requirement
- Data Cleansing (Requirement 3) – how is this going? If you require assistance please contact your PCLO (PSO)
- eScripts (Requirement 4) – do you have this functionality installed and active? If not, contact one of the providers – eRx or Medisecure

Resources

- Currently on our eHealth web page there is:
 - An overview of the eHealth PiP requirements
 - policy template for Secure Messaging (Requirement 2);
 - policy template for Data Coding and Clinical Records (Requirement 3)
 - overview of eRx and Medisecure
 - Consumer and GP and Healthcare Provider eHealth brochures
 - PKI Summary of the types and their uses;

This week we will upload:

- a policy template for PCEHR access and use (Requirement

5). This needs to be in place when you go live and start uploading or accessing the PCEHR.

- a Go Live check list for you to ensure you have everything in place before you go live
- software specific Cheat Sheets for configuration
- definitions associated with the PCEHR
- eHealth Contact List

Coming soon we will upload:

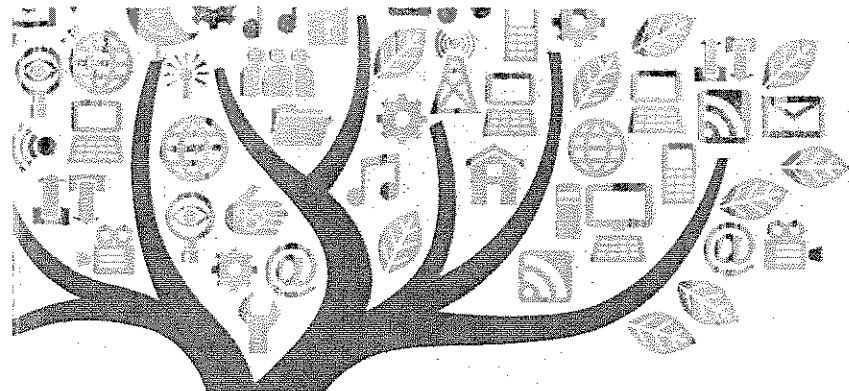
- Software specific Cheat Sheets for accessing and uploading to the PCEHR

What's next?

- Work with your IT Support provider to ensure your clinical software has been upgraded to the latest version (PCEHR compliant). Best Practice due by the end of February
- Please let us know when you have received your NASH certificate and passphrase
- Work with your IT Support Provider to configure the software to enable PCEHR access and use

How can we help you to go live?

- IT Support to upgrade and configure your software to be provided by:
- Hunter ML managed practices – this is part your contract; or
- Own IT Support Provider should upgrade and configure the software for you; or
- Hunter ML IT Team can provide this support on a fee for service basis, please contact the IT Team for details if required



The Local News – Monday February 25 2013

- Go Live: if you would like process support on the day you go live, this is possible. Please contact our Provider Support Administrator to make a booking
- We will get in touch in regards to the removal of the Companion Gateways we provided to your practice last year

For more information contact a member of our eHealth team on 4925 2259

Global Health Information forum

Next meeting

Date: 6th March 2013

Time: 7pm

Venue: Hunter ML Head Office, 123 King St Level one meeting room

There will be 4 presentations at the meeting, each about 15minutes long.

1. Rebecca Collins, medical student about her time in Nepal
2. Janice Hodgson, midwife and lactation consultant about working in remote indigenous communities
3. A medical student from Wake Up!, the Global health group within the faculty of medicine, University of Newcastle, taking about what this group is doing.
4. Robyn Fried, GP, about working in East Timor.

After the presentations, we will have some take away food arrive, and have an open forum for people to discuss whatever they wish.

RSVP to: swhite@huntermhl.com.au

HPMI Paediatric Weekend

Date: 9 and 10 MARCH, 2013

Venue: The Glades Function Centre Warners Bay

Time: Saturday 8.30 AM - 5.00 PM and Sunday 9.00 AM – 5.00 PM

For more details:

www.hpml.org

anne.feletti@newcastle.edu.au

(02) 4913 8173

HealthPathways visiting the Upper Hunter

Dr Margaret Lynch and Martha Parsons are now taking bookings from practices located in Upper Hunter region who would like to learn more about the HealthPathways program.

Margaret and Martha are able to offer practical demonstrations of the site and demonstrate how you can use it in your practice everyday to improve the care of your patients and save you time.

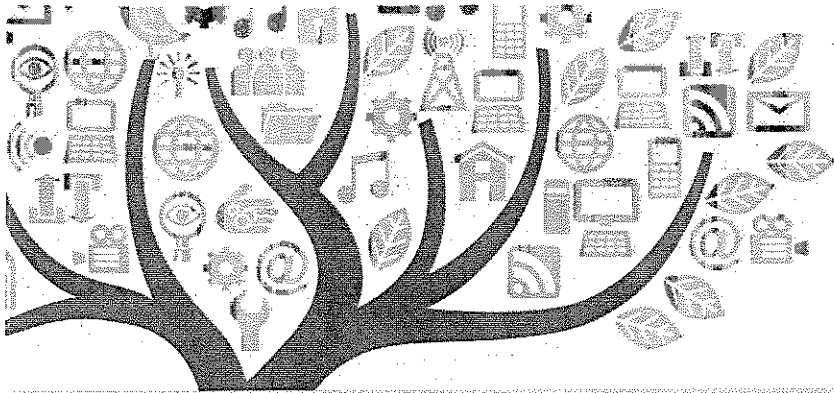
Visits are available from 7am 28th February to 6pm 1st March and ideally a minimum 1/2 hour-hour needs to be set aside to gain maximum benefit from the visit.

For more information

Email: mparsons@huntermhl.com.au

Primary Health Care Management Networking Dinner

Hunter Medicare Local is hosting Primary Care Networking Dinners to address current issues and trends occurring in practices. These dinners are designed for Practice Managers and Clerical Staff, working in General Practice and Allied Health organisations, to network with other professionals within the local area.



The Local News – Monday February 25 2013

These Networking Dinners will be focusing on eHealth, Telehealth and HealthPathways and the role of clerical and management staff. Representatives from Hunter Medicare Local will be made available for Q & A sessions and networking. Dates are as below:

Date: Wednesday 6 March
Venue: The Bradford Hotel
358 New England Highway

Date: Thursday 14 March
Venue: Muswellbrook RSL
113 Bridge Street, Muswellbrook

Date: Tuesday 19 March
Venue: Tallwoods Verve Resort
2 Blackhead Road, Hallidays Point

If you would like to be a part of these very informative and interactive events please contact Amy Harrison at aharrison@hunterml.com.au or 49260534.

Health Assessments Education

Do you know how to best utilise MBS item numbers? Hunter Medicare Local is holding a Health Assessments education session to educate multidisciplinary health professionals on how to maximizes and assess care planning for patients.

Liz Meadley, will present an interactive education session to discuss:

- the clinical requirements for health assessments, chronic disease management and recall and reminders
- understanding and utilising key MBS item numbers and
- how to best use staff and Medicare item numbers from a whole practice approach.

Date: Tuesday 5 March

Time: 1:00pm – 5:00pm
Venue: The Bradford Hotel
Rutherford

For further information please contact Amy Harrison on (02) 4926 0534 or email aharrison@hunterml.com.au.

Men's Health Education

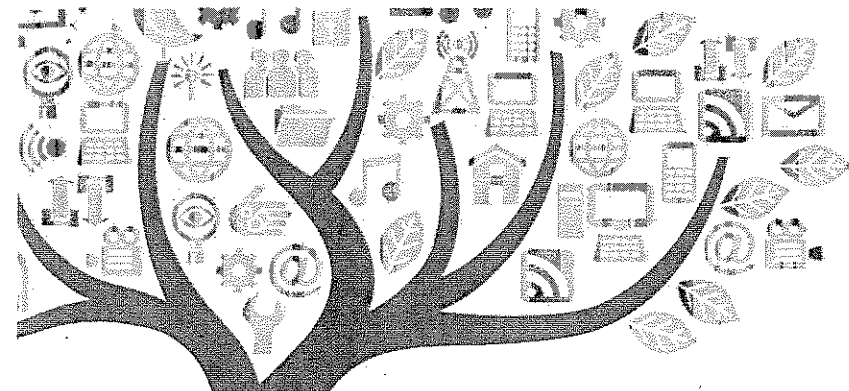
This men's health promotion education session that focuses on how we can more effectively communicate health and wellbeing messages to men and what agencies and organisations need to know about making their services, programs and resources more men friendly to achieve the best possible outcomes for men and boys. The program is for men and women who work in organisations and companies that provide health, welfare, wellbeing or community services for men and boys.

Greg Millan, will present an interactive education session to discuss:

- the current national issues are for men and boys
- principles of best practice in men's health & wellbeing work
- how to increase your knowledge and skills in men's health & wellbeing work
- the use of the H.E.A.L.T.H. model for effectively engaging with men

Date: Monday 4 March
Time: 9:30am – 12:30pm
Fee: \$70
Venue: The Bradford Hotel
358 New England Highway,
Rutherford

Date: Wednesday 13 March
Time: 9:30am – 12:30pm
Fee: \$70
Venue: Hunter Medicare Local
Office 123 King Street,
Newcastle



The Local News – Monday February 25 2013

For further information please contact Amy Harrison on (02) 4926 0534 or email aharrison@huntermhl.com.au.

Hunter Physiotherapy Education

Lecture: Tendinopathy. Do we under use treatments in this over use condition? What are the treatment options and when should they be used?

Lecture outline: Background review of pathology, its application to humans and clinical situations (why does this cause pain - mechanoreceptors, neurogenic inflammation cGRP, TRPV1 receptors, why does it happen?). Presenter will briefly review the causes of tendinopathy and its typical presentations, followed by treatment options and the evidence behind those treatment options.

This event is suitable for students.

Presenters: Dr Ross Cairns MBBS, BSc (HONS), PG Dip Sports Med

Date: 15th March 2013

Time: 6.30pm - 9.30pm

Venue: Mayfield Wests Impressions Room

For more information or booking details contact local group chair Bruce Donald Bruce.Donald@hnehealth.nsw.gov.au

Little People, Big Difference: A Closer Look at Paediatric Care

This education session aims to enhance your ability to problem solve when assessing the sick child, identify clinical markers of the sick and deteriorating child and review current evidence based practice relevant to Health

Paediatric Clinical Practice Guidelines. Within this session you will understand how to utilise the Kaleidoscope Decision Tree for Mandatory Reporting and the Paediatric Health Assessment.

Date: Friday 22 March

Time: 9:00am – 4:00pm

Cost: \$150

Venue: The Bradford Hotel
Rutherford

For further information please contact Amy Harrison on (02) 4926 0534 or email aharrison@huntermhl.com.au.

The Local News is intended as an avenue for discussion, views expressed within do not always represent the views of the Hunter Medicare Local, its members, board or staff. Hunter Medicare Local is not responsible for any action taken in reliance on anything contained in this newsletter.

To unsubscribe from this newsletter or to provide comments or contributions email: communication@huntermhl.com.au

