

State and Territory trajectories,
December 2010

Introduction

This document contains information about the state and territory trajectories.

We have also taken the opportunity to add some words into the NIRA making it clear that the trajectories are not forecasts or predictions of what is likely to happen. They provide an indicative path and are not intended to forecast actual progress at any point. It should be also noted that trajectories for Indigenous Australians are affected by changes for non-Indigenous Australians, in other words the target outcomes for Indigenous Australians are themselves a moving target.

Attachment 1 contains further details for specific targets and a detailed description of each of the targets and trajectories can be obtained from the NIRA PIMG Secretariat.

Contents

Introduction.....	1
Contents	2
COAG Targets	3
Closing the life expectancy gap within a generation	3
NSW.....	3
Queensland.....	4
Northern Territory.....	5
All-cause mortality.....	7
New South Wales.....	7
Queensland.....	8
South Australia.....	9
Northern Territory.....	10
Halving the gap in mortality rates for Indigenous children under five within a decade	11
Ensuring all Indigenous four years olds in remote communities have access to early childhood education within five years	11
Halving the gap for Indigenous students in reading, writing and numeracy within a decade	12
Halving the gap for Indigenous 20-24 year olds in Year 12 or equivalent attainment rates by 2020	12
New South Wales.....	12
Victoria	13
Queensland.....	13
South Australia.....	14
Western Australia.....	14
Tasmania	15
Northern Territory.....	15
Australian Capital Territory	16
Halving the gap in employment outcomes between Indigenous and non-Indigenous Australians within a decade	16
NSW.....	17
Victoria	17
Queensland.....	17
South Australia.....	18
Western Australia.....	18
Tasmania	18
Northern Territory.....	18
Australian Capital Territory	19
Attachment 1	20
Life Expectancy – NSW	20
Life Expectancy – Queensland	21
Life Expectancy – Northern Territory	22
All-cause mortality.....	22
New South Wales.....	23
Queensland.....	24
South Australia.....	24
Northern Territory.....	25

COAG Targets

COAG has agreed to the following targets:

- closing the life expectancy gap within a generation;
- halving the gap in mortality rates for Indigenous children under five within a decade;
- ensuring all Indigenous four years olds in remote communities have access to early childhood education within five years;
- halving the gap for Indigenous students in reading, writing and numeracy within a decade;
- halving the gap for Indigenous students in Year 12 attainment or equivalent attainment rates by 2020; and
- halving the gap in employment outcomes between Indigenous and non-Indigenous Australians within a decade.

Closing the life expectancy gap within a generation

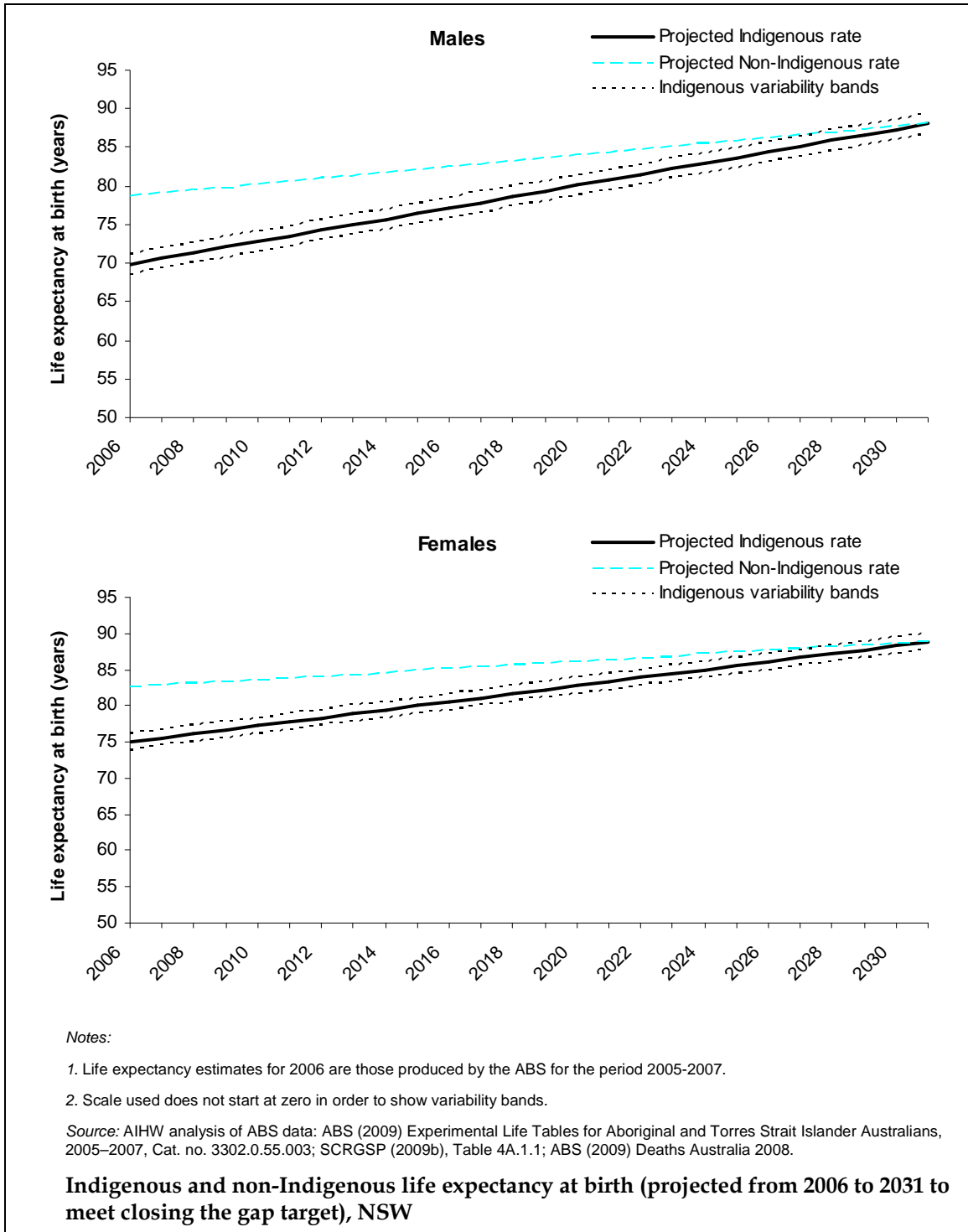
Indigenous life expectancy estimates are currently produced at the national level and for four jurisdictions only—New South Wales, Queensland, Western Australia and the Northern Territory. The ABS considers the number of Indigenous deaths in the other jurisdictions to be too small to produce reliable estimates of life expectancy at birth.

Note that the baseline year for life expectancy is 2005-2007.

The following sections set out a summary of these trajectories. [Attachment 1](#) includes the detailed jurisdictional trajectories.

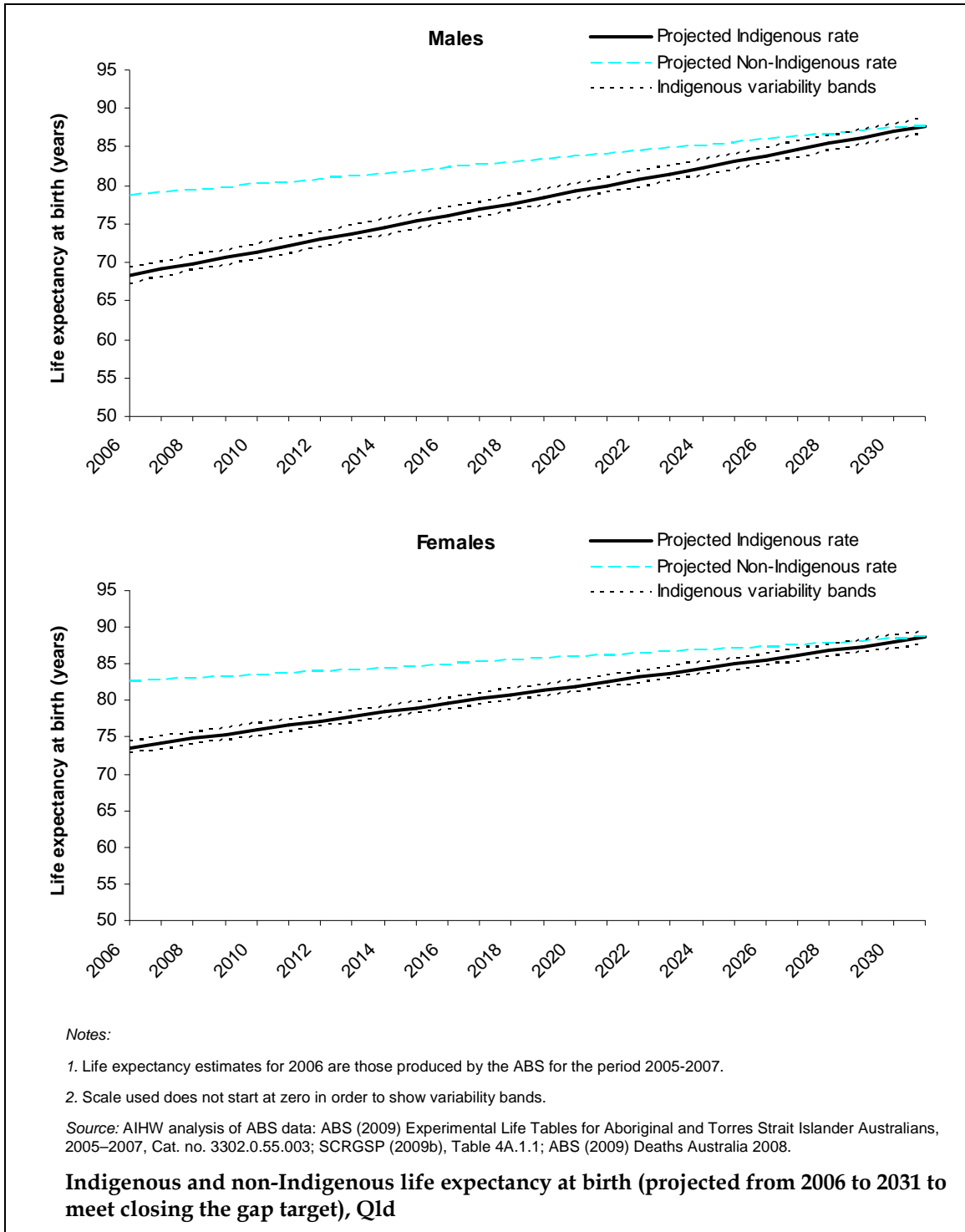
NSW

In order to meet the COAG target to close the gap in life expectancy at birth in a generation, Indigenous male life expectancy at birth would need to increase in New South Wales from 69.9 years in 2006 to 88.0 years in 2031 — around 0.7 years per year; and Indigenous female life expectancy at birth would need to increase from 75.0 years in 2006 to 88.9 years in 2031 — around 0.6 years per year.



Queensland

In order to meet the COAG target to close the gap in life expectancy at birth in a generation, Indigenous life expectancy at birth in Queensland would need to increase from 68.3 years in 2006 to 87.8 years in 2031 for males— around 0.8 years per year; and from 73.6 years in 2006 to 88.6 years in 2031 for females— around 0.6 years per year.

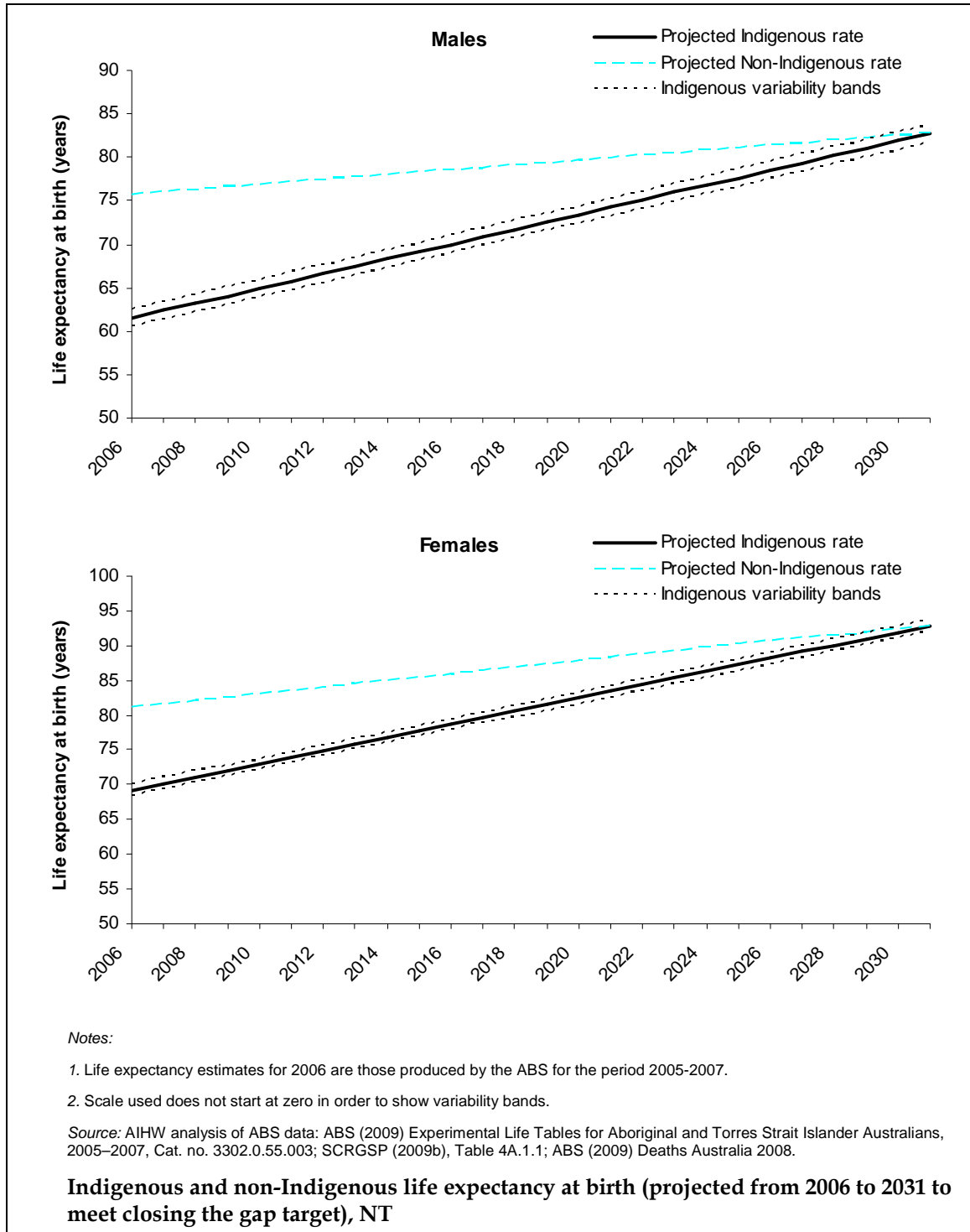


Northern Territory

In order to meet the COAG target to close the gap in life expectancy at birth in a generation, Indigenous life expectancy at birth in the Northern Territory would need

¹ The trajectory for Indigenous females are broadly consistent with those used by the Queensland Health Department. For Indigenous males, the proposed gap to be closed is higher than used in the Queensland Health Department.

to increase from 61.5 years in 2006 to 82.7 years in 2031 for males— around 0.8 years per year; from 69.2 years in 2006 to 92.9 years in 2031 for females— around 0.9 years per year.



All-cause mortality

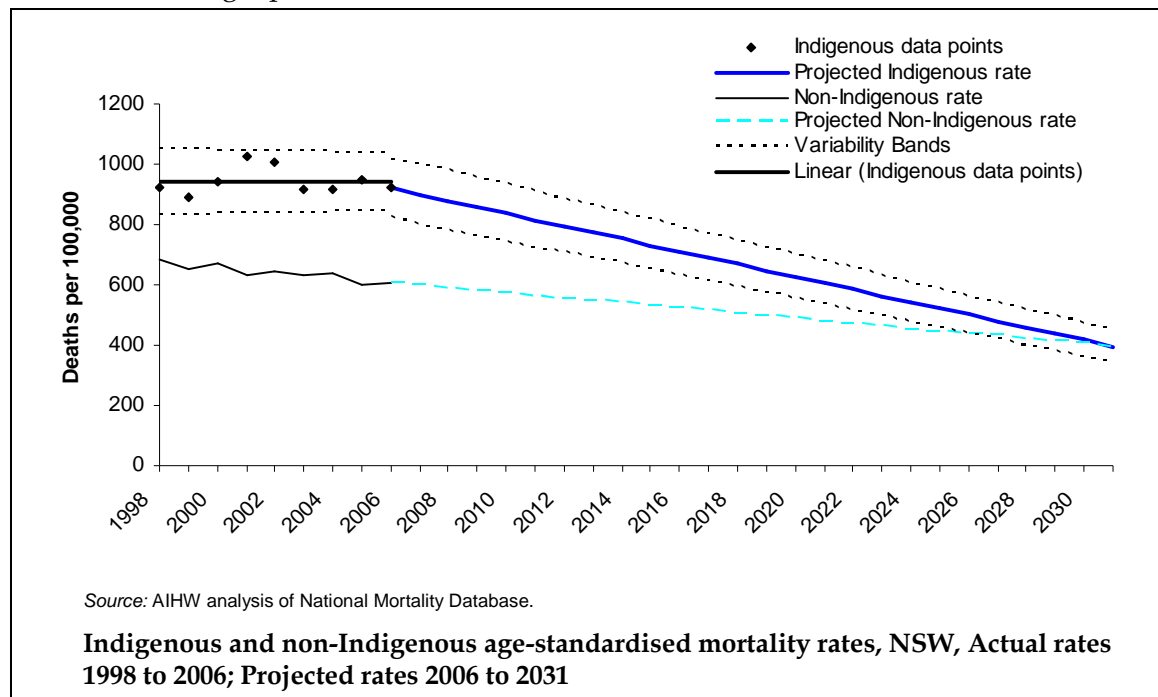
The all-cause mortality indicator has been developed as a proxy annual indicator for life expectancy (which can only be measured every five years).

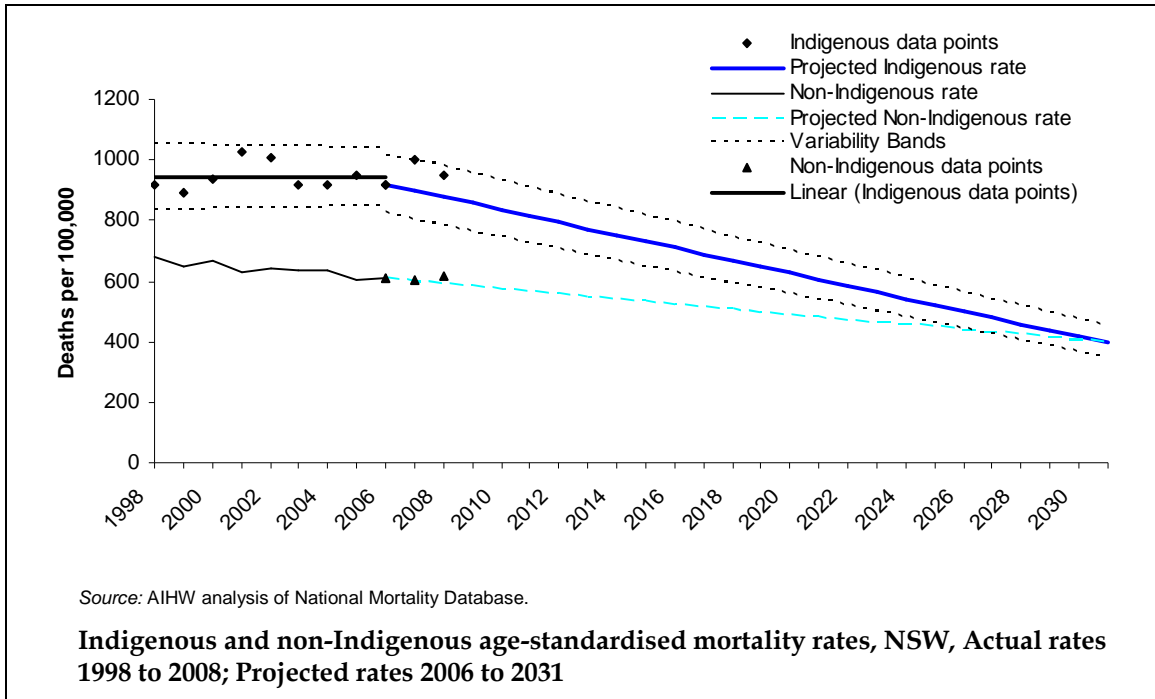
State/Territory trajectories for all-cause age-standardised mortality rates have been estimated for the five jurisdictions with adequate identification of Indigenous deaths (NSW, Qld, WA, SA & NT). This relates to the small numbers in the other jurisdictions and issues relating to Indigenous identification. National trajectories include these five jurisdictions only.

Further details about this trajectory is included in Attachment A.

New South Wales

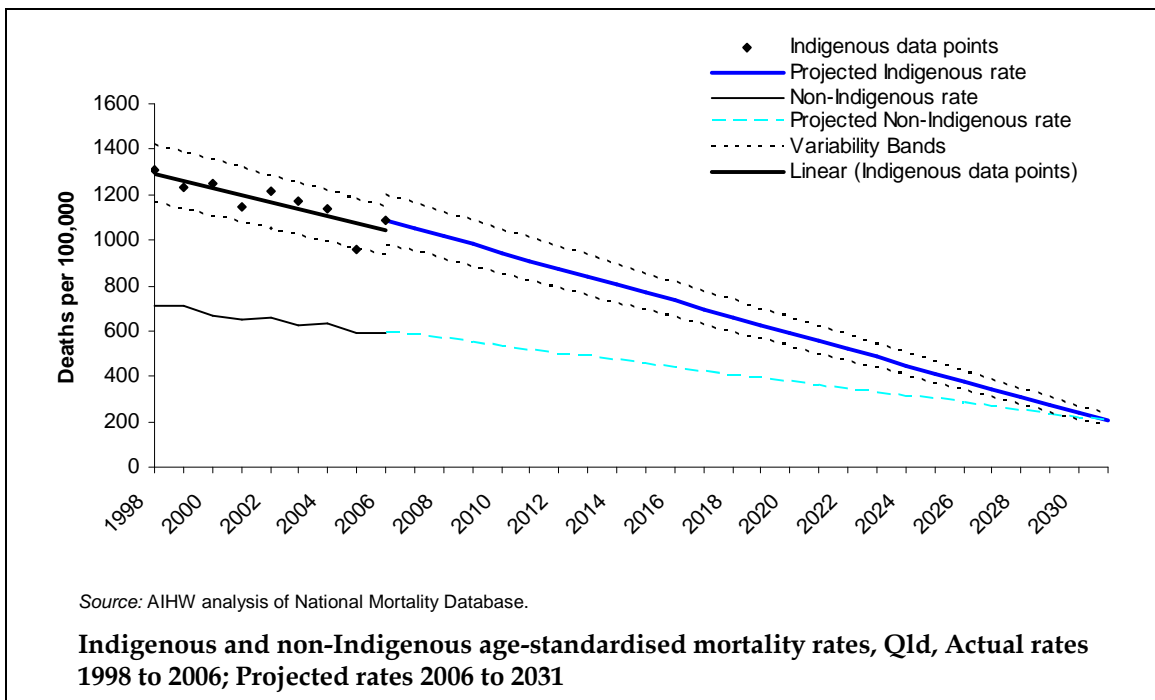
In order to close the gap in all-cause mortality, the Indigenous age standardised mortality rate in New South Wales would need to decline from 920 deaths per 100,000 population in 2006 to 395 deaths per 100,000 population in 2031. This equates to an overall reduction in the Indigenous age standardised mortality rate of 57% over the target period.

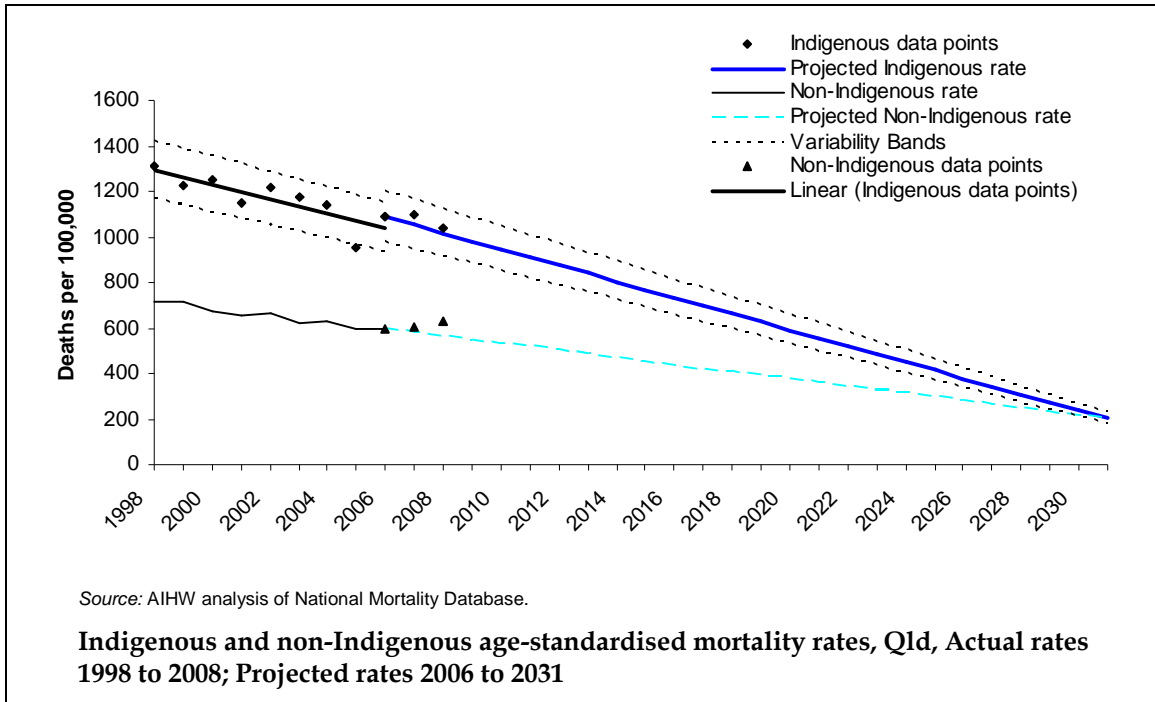




Queensland

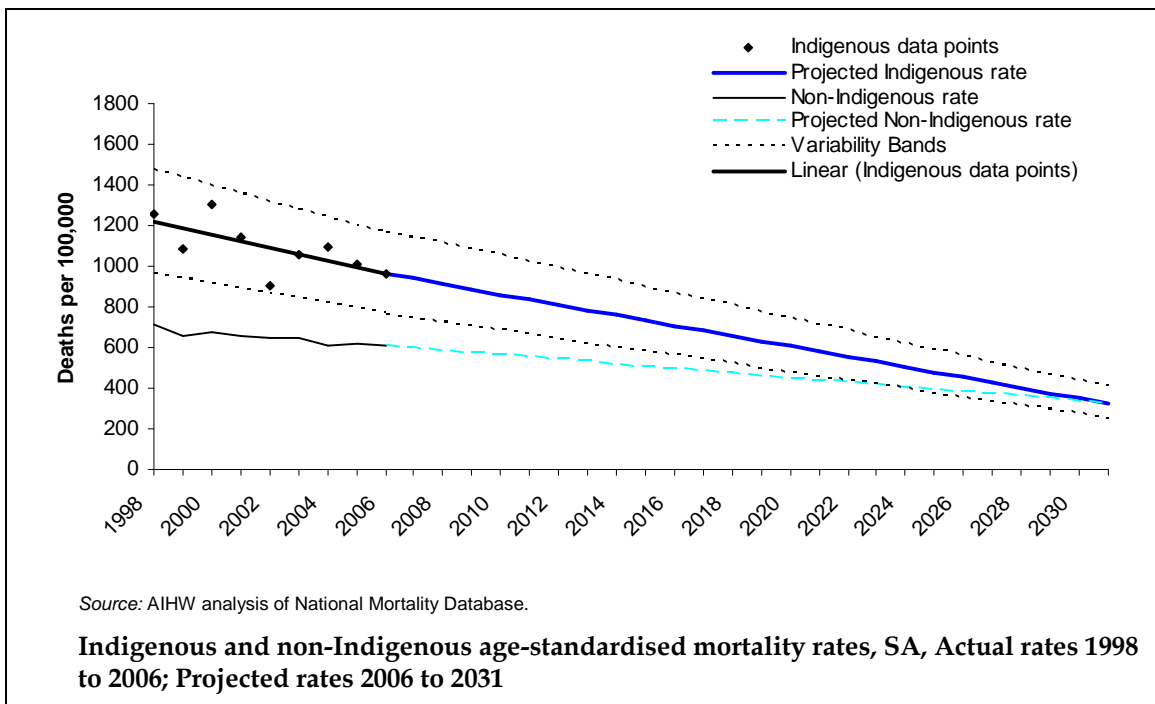
In order to close the gap in all-cause mortality, the Indigenous age standardised mortality rate in Queensland would need to decline from 1087 deaths per 100,000 population in 2006 to 201 deaths per 100,000 population in 2031. This equates to an overall reduction in the Indigenous age standardised mortality rate of 82% over the target period.

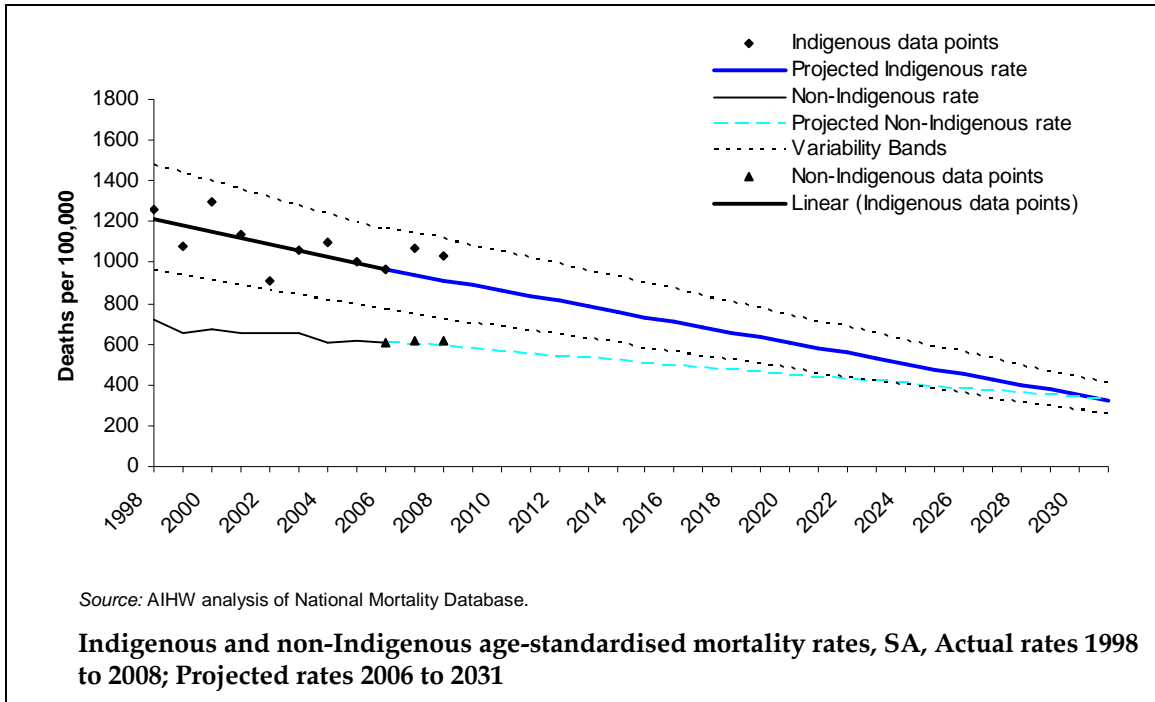




South Australia

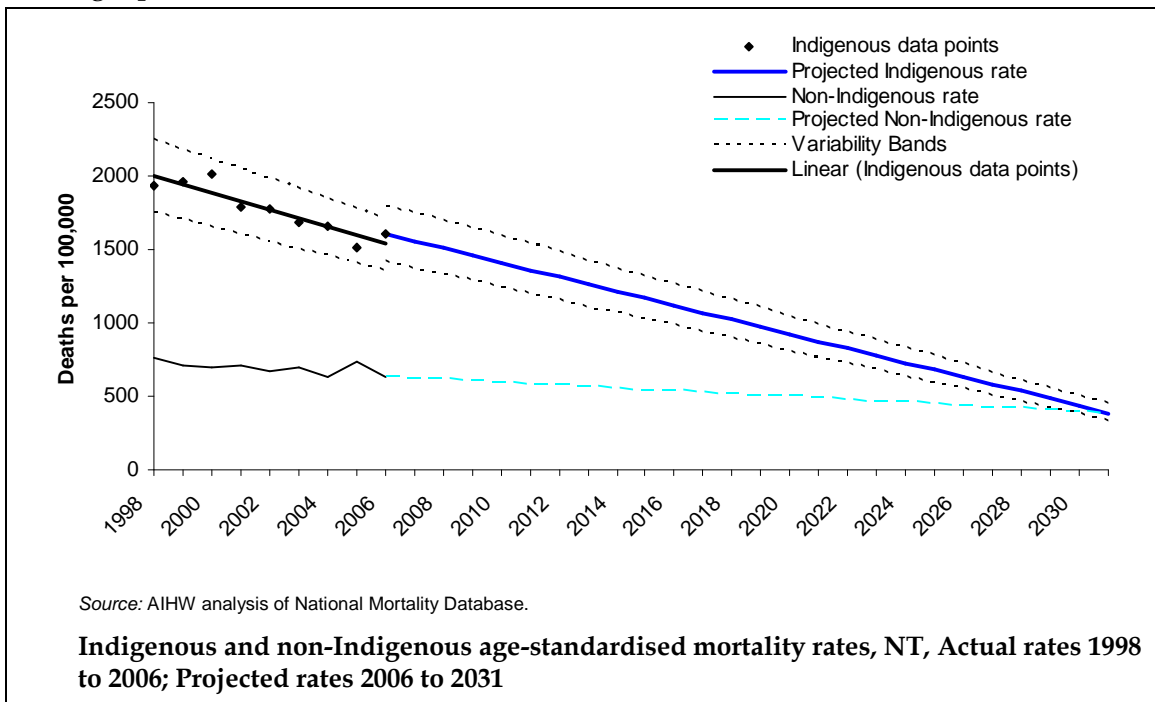
In order to close the gap in all-cause mortality, the Indigenous age standardised mortality rate in South Australia would need to decline from 964 deaths per 100,000 population in 2006 to 325 deaths per 100,000 population in 2031. This equates to an overall reduction in the Indigenous age standardised mortality rate of 66% over the target period.

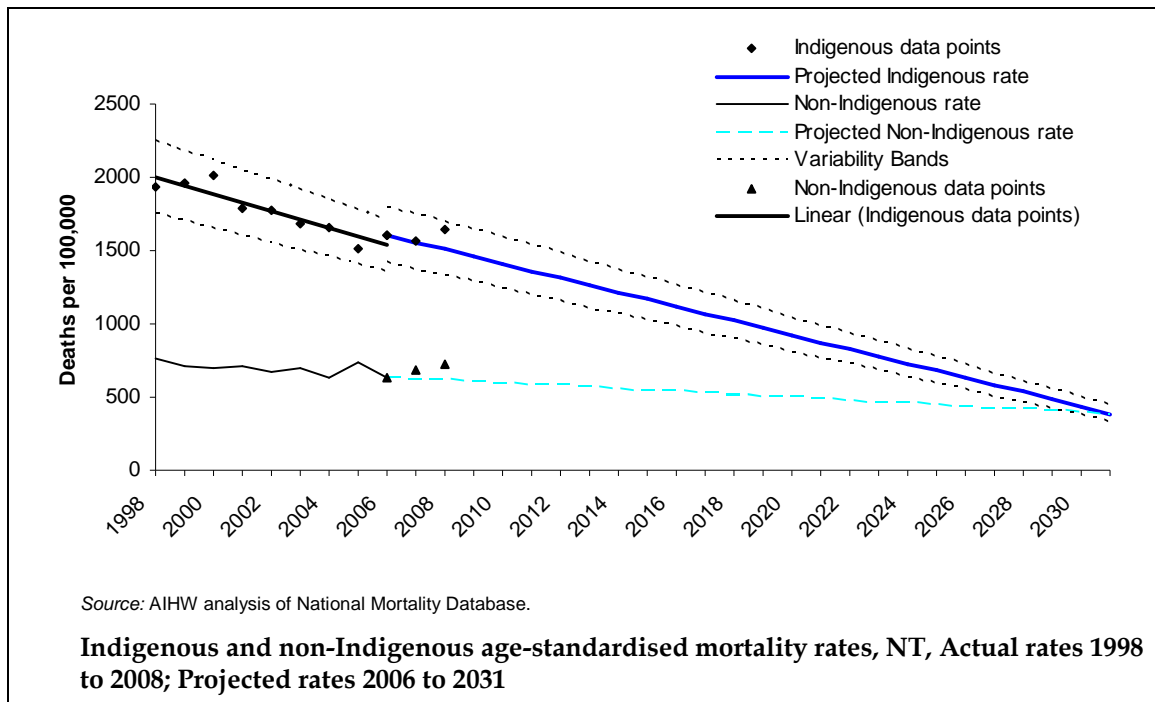




Northern Territory

In order to close the gap in all-cause mortality, the Indigenous age standardised mortality rate in the Northern Territory would need to decline from 1605 deaths per 100,000 population in 2006 to 387 deaths per 100,000 population in 2031. This equates to an overall reduction in the Indigenous age standardised mortality rate of 76% over the target period.





Halving the gap in mortality rates for Indigenous children under five within a decade

The NIRA PIMG developed jurisdictional trajectories for the under-5 mortality target, but unfortunately the confidence levels around the trajectories were so wide that the trajectories would be of very limited practical use. The NIRA PIMG continues to investigate this issue, but the small numbers and the resulting variability in the trajectories may result in unusable trajectories at a jurisdictional level for this target.

Ensuring all Indigenous four years olds in remote communities have access to early childhood education within five years

Data on the Indigenous four year old population is currently not robust enough to support the calculation of trajectories for remote communities by state and territory. Therefore, this target will only be calculated nationally.

The only national source that currently provides data for Indigenous children by age is the National Preschool Census (NPC) conducted by DEEWR. However, this source is unsuitable because it excludes children enrolled in preschool programs delivered in child care settings (for example, long day care services) and, therefore, does not represent participation in all early childhood education programs. In the future, it is anticipated that the new national early childhood education and care data collection being conducted by the ABS will be the source for this trajectory [nationally](#). Complete data are expected from the 2011 collection, which is anticipated to be available in early 2012 to prepare trajectories

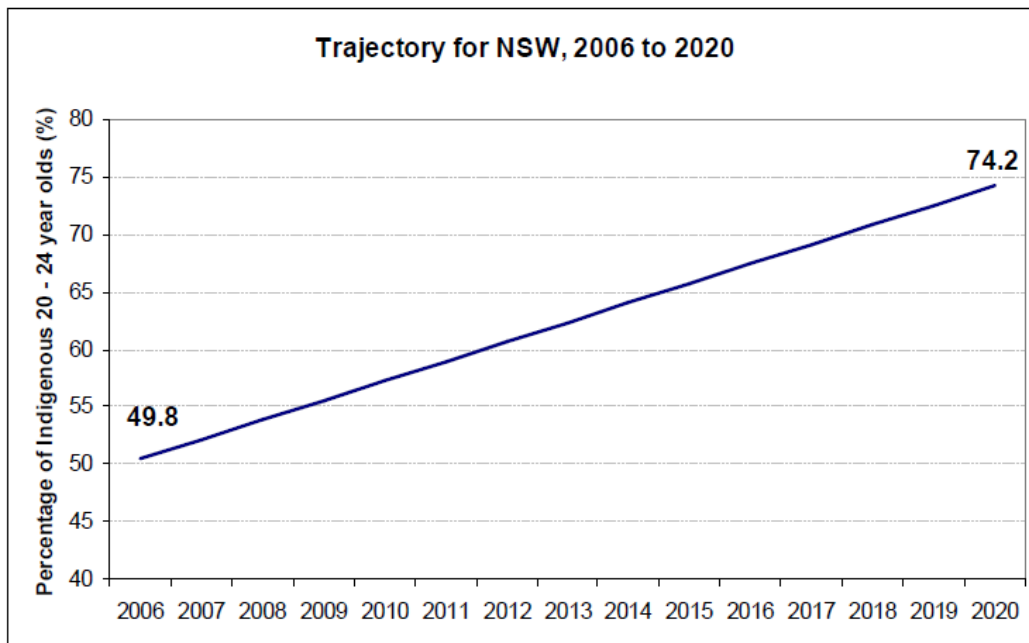
Halving the gap for Indigenous students in reading, writing and numeracy within a decade

National and jurisdictional trajectories for this target have already been finalised and provided to the CRC.

Halving the gap for Indigenous 20-24 year olds in Year 12 or equivalent attainment rates by 2020

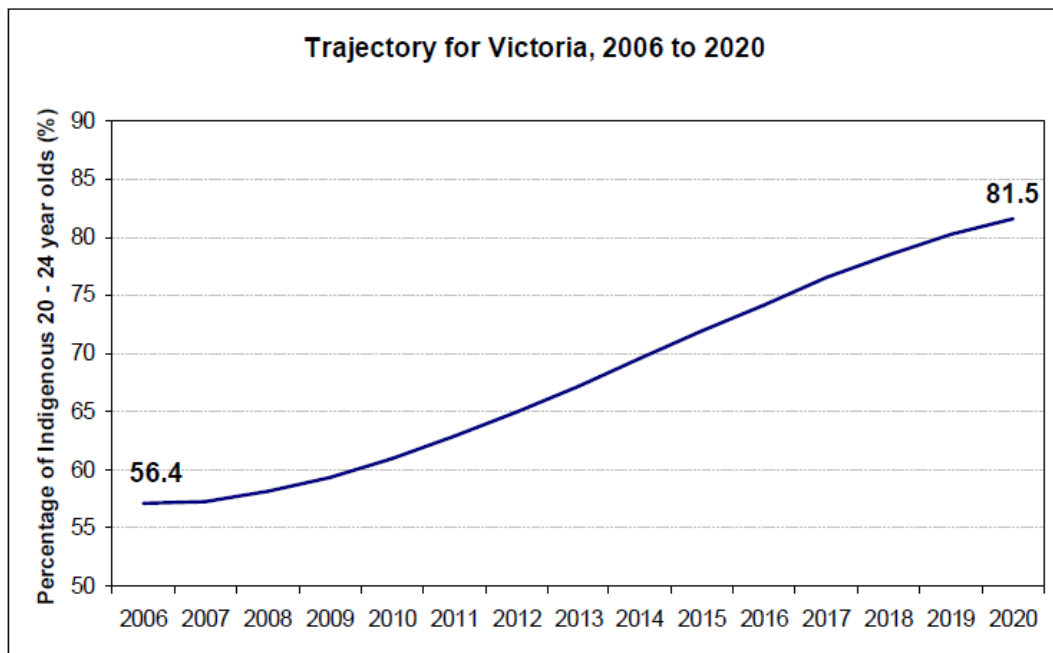
The jurisdiction trajectories were prepared using the formula for the National S-curve trajectories that appears in Schedule B of the National Partnership on Youth Attainment and Transitions (YAT), except for the preference for the NSW jurisdiction which is a straight line trajectory.

New South Wales



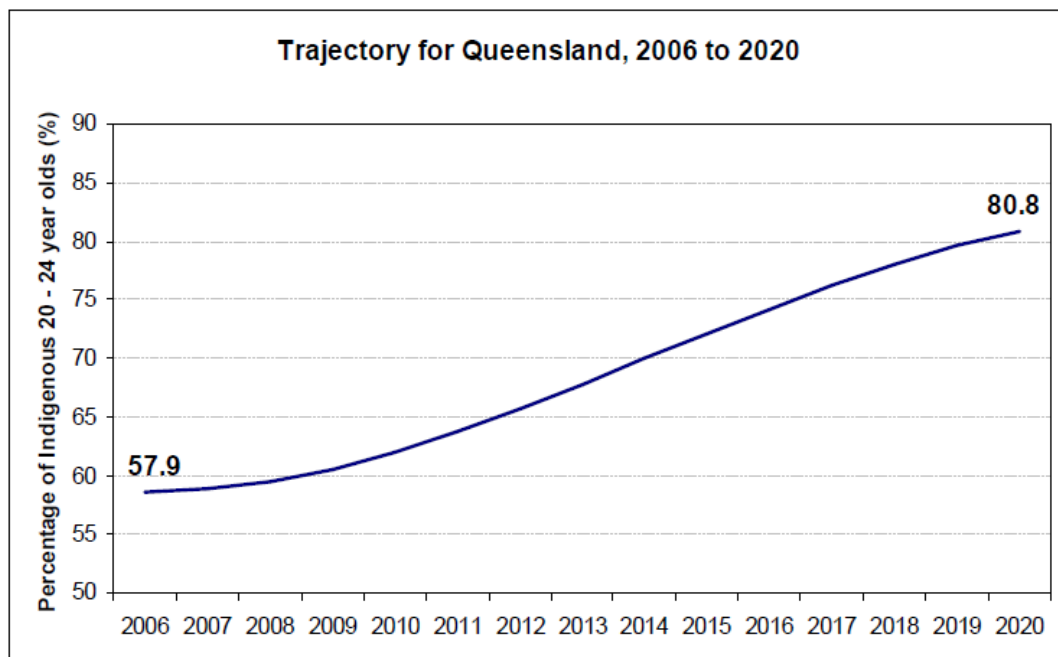
Jurisdiction trajectories are a guide to anticipated progress from current to target Indigenous attainment rates. They provide an indicative path only which is not intended to present actual progress at any point.

Victoria



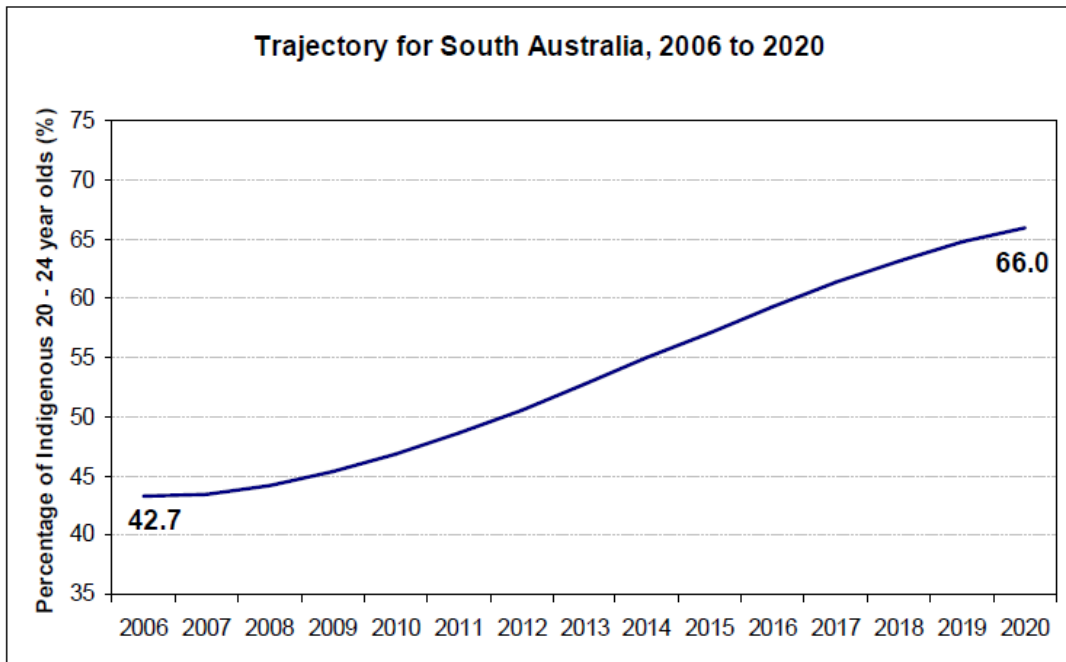
Jurisdiction trajectories are a guide to anticipated progress from current to target Indigenous attainment rates. They provide an indicative path only which is not intended to present actual progress at any point.

Queensland



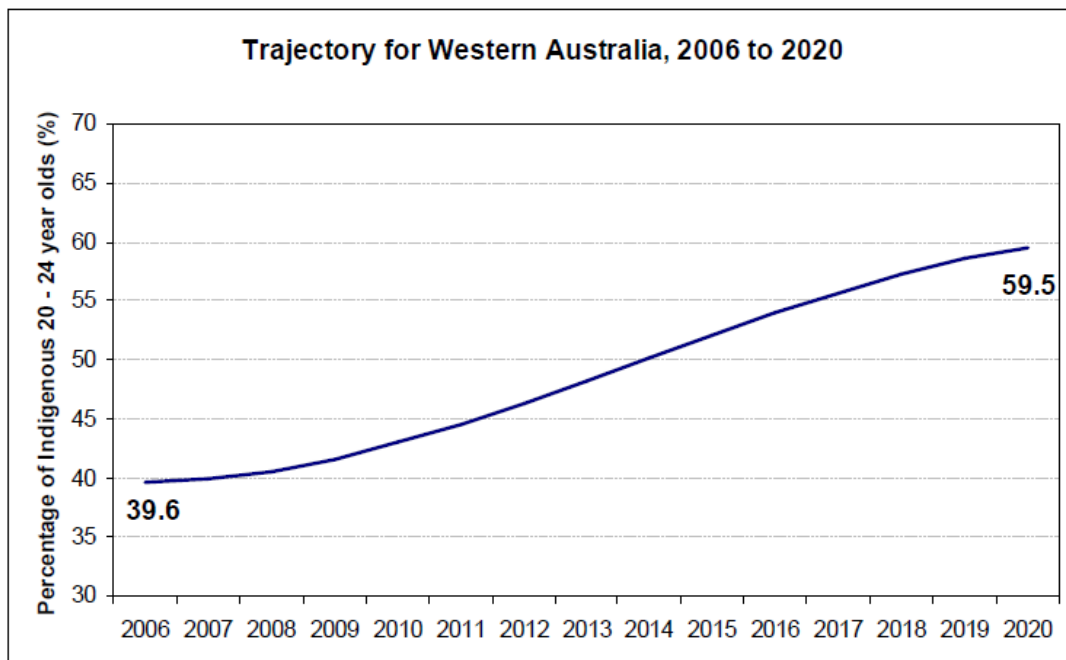
Jurisdiction trajectories are a guide to anticipated progress from current to target Indigenous attainment rates. They provide an indicative path only which is not intended to present actual progress at any point.

South Australia



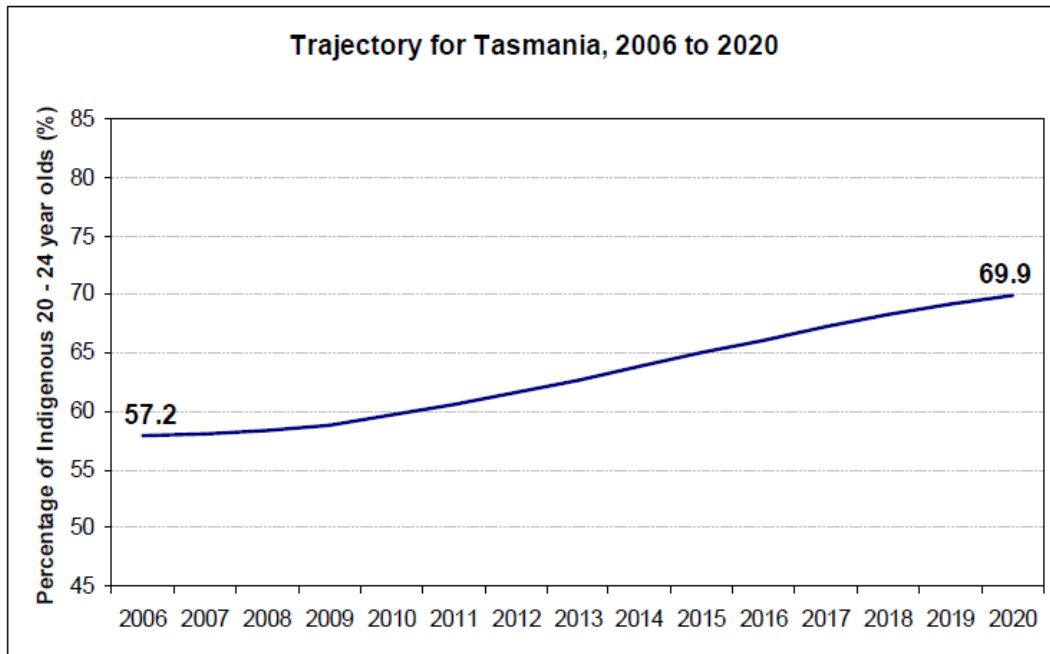
Jurisdiction trajectories are a guide to anticipated progress from current to target Indigenous attainment rates. They provide an indicative path only which is not intended to present actual progress at any point.

Western Australia



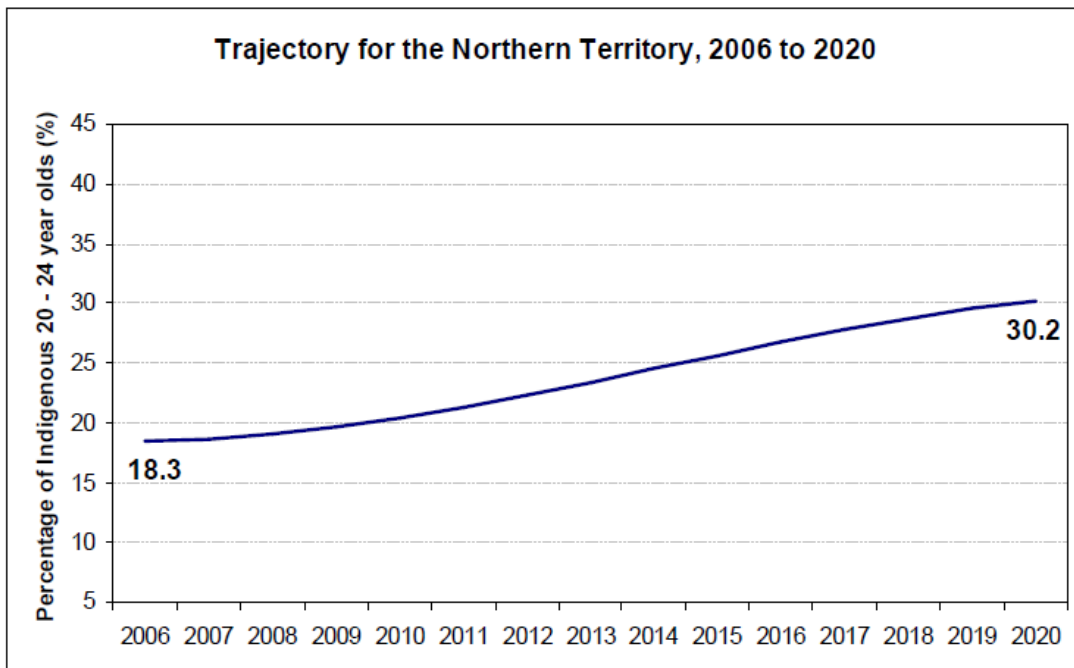
Jurisdiction trajectories are a guide to anticipated progress from current to target Indigenous attainment rates. They provide an indicative path only which is not intended to present actual progress at any point.

Tasmania



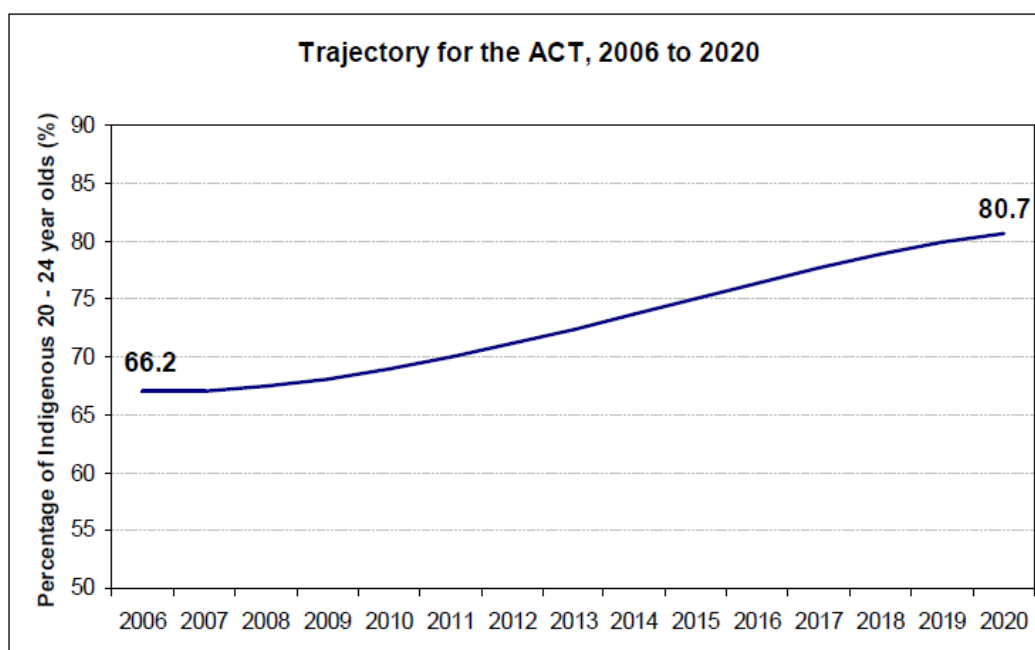
Jurisdiction trajectories are a guide to anticipated progress from current to target Indigenous attainment rates. They provide an indicative path only which is not intended to present actual progress at any point.

Northern Territory



Jurisdiction trajectories are a guide to anticipated progress from current to target Indigenous attainment rates. They provide an indicative path only which is not intended to present actual progress at any point.

Australian Capital Territory



Jurisdiction trajectories are a guide to anticipated progress from current to target Indigenous attainment rates. They provide an indicative path only which is not intended to present actual progress at any point.

Halving the gap in employment outcomes between Indigenous and non-Indigenous Australians within a decade

The following table presents the employment to population ratio trajectory for Indigenous people aged 15 to 64 in Australia. The Gap is the difference to the employment to population ratio for the non-Indigenous population.

	Indigenous Employment- Population ratio	Gap to non-Indigenous
2008-09	53.8	21.2
2011-12	56.6	18.0
2014-15	61.7	14.8
2017-18	65.7	11.7
2018-19	66.8	10.6

**Increase in Employment for Indigenous Australians
Required to Achieve the Halving the Gap Targets**

	Employment- Population Ratio (%)	Employment Increase over 10 Years
NSW	61.9	29,900
Victoria	68.2	6,700
Queensland	71.2	29,100
SA	64.7	5,200
WA	68.9	12,900
Tasmania	66.2	2,900
NT	69.4	13,600
ACT	79.9	800
Sum of States & Territories	67.3	101,100
Australia	66.8	100,000

The employment – population ratio trajectories for each State and Territory are shown below:

NSW

The following table presents the employment-population ratio trajectory for NSW.

	Indigenous Employment- Population ratio	Gap to non-Indigenous
2008-09	47.3	26.6
2011-12	50.8	22.6
2014-15	56.4	18.6
2017-18	60.6	14.6
2018-19	61.9	13.3

Victoria

The following table presents the employment-population ratio trajectory for Victoria.

	Indigenous Employment- Population ratio	Gap to non-Indigenous
2008-09	55.1	19.4
2011-12	58.6	16.5
2014-15	63.5	13.6
2017-18	67.2	10.7
2018-19	68.2	9.7

Queensland

The following table presents the employment-population ratio trajectory for Queensland.

	Indigenous Employment- Population ratio	Gap to non-Indigenous
2008-09	59.5	17.2
2011-12	61.0	14.6

2014-15	65.8	12.1
2017-18	70.0	9.5
2018-19	71.2	8.6

South Australia

The following table presents the employment-population ratio trajectory for South Australia.

	Indigenous Employment- Population ratio	Gap to non-Indigenous
2008-09	51.7	21.2
2011-12	55.4	18.1
2014-15	60.2	14.9
2017-18	63.7	11.7
2018-19	64.7	10.6

Western Australia

The following table presents the employment-population ratio trajectory for Western Australia.

	Indigenous Employment- Population ratio	Gap to non-Indigenous
2008-09	56.3	19.8
2011-12	57.9	16.9
2014-15	63.6	13.9
2017-18	67.7	10.9
2018-19	68.9	9.9

Tasmania

The following table presents the employment-population ratio trajectory for Tasmania.

	Indigenous Employment- Population ratio	Gap to non-Indigenous
2008-09	59.6	13.8
2011-12	60.7	11.7
2014-15	63.2	9.7
2017-18	65.4	7.6
2018-19	66.2	6.9

Northern Territory

The following table presents the employment-population ratio trajectory for Northern Territory.

	Indigenous Employment- Population ratio	Gap to non-Indigenous
2008-09	50.8	34.1
2011-12	54.7	29.0
2014-15	62.4	23.9

2017-18	68.0	18.8
2018-19	69.4	17.1

Note: Future changes to the treatment of CDEP recipients by the ABS to be classified as 'not employed' will have a larger impact in the NT where around 7000 out of about 17000 CDEP participants will no longer be considered 'employed'. This will increase the NT gap to larger than the current baseline.

Australian Capital Territory

The following table presents the employment-population ratio trajectory for ACT.

	Indigenous Employment- Population ratio	Gap to non-Indigenous
2008-09	72.1	9.3
2011-12	73.0	7.9
2014-15	76.9	6.5
2017-18	79.4	5.1
2018-19	79.9	4.7

Attachment 1

Life Expectancy – NSW

Life expectancy at birth: Indigenous with 95% variability bands (VB), non-Indigenous and gap, 2005-07(baseline) to 2031 (target), NSW

	Males				Females			
	Indigenous	95% VB	Non-Indig.	Gap (years)	Indigenous	95% VB	Non-Indig.	Gap (years)
2006 (Baseline)	69.9	68.6 - 71.2	78.7	-8.8	75.0	73.9 - 76.1	82.5	-7.5
2007	70.6	69.3 - 71.9	79.1	-8.4	75.6	74.5 - 76.7	82.8	-7.2
2008	71.4	70.1 - 72.7	79.4	-8.1	76.1	75.0 - 77.2	83.0	-6.9
2009	72.1	70.8 - 73.4	79.8	-7.7	76.7	75.6 - 77.8	83.3	-6.6
2010	72.8	71.5 - 74.1	80.2	-7.4	77.2	76.1 - 78.3	83.5	-6.3
2011	73.5	72.2 - 74.8	80.6	-7.0	77.8	76.7 - 78.9	83.8	-6.0
2012	74.3	73.0 - 75.6	80.9	-6.7	78.3	77.2 - 79.4	84.0	-5.7
2013	75.0	73.7 - 76.3	81.3	-6.3	78.9	77.8 - 80.0	84.3	-5.4
2014	75.7	74.4 - 77.0	81.7	-6.0	79.4	78.3 - 80.5	84.5	-5.1
2015	76.4	75.1 - 77.7	82.1	-5.6	80.0	78.9 - 81.1	84.8	-4.8
2016	77.2	75.9 - 78.5	82.4	-5.3	80.5	79.4 - 81.6	85.1	-4.5
2017	77.9	76.6 - 79.2	82.8	-4.9	81.1	80.0 - 82.2	85.3	-4.2
2018	78.6	77.3 - 79.9	83.2	-4.6	81.7	80.6 - 82.8	85.6	-3.9
2019	79.3	78.0 - 80.6	83.6	-4.2	82.2	81.1 - 83.3	85.8	-3.6
2020	80.1	78.8 - 81.4	83.9	-3.9	82.8	81.7 - 83.9	86.1	-3.3
2021	80.8	79.5 - 82.1	84.3	-3.5	83.3	82.2 - 84.4	86.3	-3.0
2022	81.5	80.2 - 82.8	84.7	-3.2	83.9	82.8 - 85.0	86.6	-2.7
2023	82.2	80.9 - 83.5	85.0	-2.8	84.4	83.3 - 85.5	86.8	-2.4
2024	83.0	81.7 - 84.3	85.4	-2.5	85.0	83.9 - 86.1	87.1	-2.1
2025	83.7	82.4 - 85.0	85.8	-2.1	85.5	84.4 - 86.6	87.3	-1.8
2026	84.4	83.1 - 85.7	86.2	-1.8	86.1	85.0 - 87.2	87.6	-1.5
2027	85.1	83.8 - 86.4	86.5	-1.4	86.7	85.6 - 87.8	87.9	-1.2
2028	85.9	84.6 - 87.2	86.9	-1.1	87.2	86.1 - 88.3	88.1	-0.9
2029	86.6	85.3 - 87.9	87.3	-0.7	87.8	86.7 - 88.9	88.4	-0.6
2030	87.3	86.0 - 88.6	87.7	-0.4	88.3	87.2 - 89.4	88.6	-0.3
2031 (target)	88.0	86.7 - 89.3	88.0	0.0	88.9	87.8 - 90.0	88.9	0.0

Notes:

1. Life expectancy at birth used for baseline (2006) are estimates produced by the ABS for the period 2005-2007.
2. Variability bands for non-Indigenous life expectancy and the gap are unable to be estimated from available data. These statistics have not been estimated for the baseline year and thus cannot be projected.

Life Expectancy – Queensland

Life expectancy at birth: Indigenous with 95% variability bands (VB), non-Indigenous and gap, 2005-07 (baseline) to 2031 (target), Qld

	Males				Females			
	Indigenous	95% VB	Non-Indig.	Gap (years)	Indigenous	95% VB	Non-Indig.	Gap (years)
2006 (Baseline)	68.3	67.3 - 69.3	78.6	-10.3	73.6	72.8 - 74.4	82.5	-8.9
2007	69.1	68.1 - 70.1	79.0	-9.9	74.2	73.4 - 75.0	82.7	-8.5
2008	69.9	68.9 - 70.9	79.3	-9.5	74.8	74.0 - 75.6	83.0	-8.2
2009	70.6	69.6 - 71.6	79.7	-9.1	75.4	74.6 - 76.2	83.2	-7.8
2010	71.4	70.4 - 72.4	80.1	-8.7	76.0	75.2 - 76.8	83.5	-7.5
2011	72.2	71.2 - 73.2	80.4	-8.2	76.6	75.8 - 77.4	83.7	-7.1
2012	73.0	72.0 - 74.0	80.8	-7.8	77.2	76.4 - 78.0	84.0	-6.8
2013	73.8	72.8 - 74.8	81.2	-7.4	77.8	77.0 - 78.6	84.2	-6.4
2014	74.5	73.5 - 75.5	81.5	-7.0	78.4	77.6 - 79.2	84.4	-6.1
2015	75.3	74.3 - 76.3	81.9	-6.6	79.0	78.2 - 79.8	84.7	-5.7
2016	76.1	75.1 - 77.1	82.3	-6.2	79.6	78.8 - 80.4	84.9	-5.3
2017	76.9	75.9 - 77.9	82.6	-5.8	80.2	79.4 - 81.0	85.2	-5.0
2018	77.6	76.6 - 78.6	83.0	-5.4	80.8	80.0 - 81.6	85.4	-4.6
2019	78.4	77.4 - 79.4	83.4	-4.9	81.4	80.6 - 82.2	85.7	-4.3
2020	79.2	78.2 - 80.2	83.7	-4.5	82.0	81.2 - 82.8	85.9	-3.9
2021	80.0	79.0 - 81.0	84.1	-4.1	82.6	81.8 - 83.4	86.2	-3.6
2022	80.8	79.8 - 81.8	84.5	-3.7	83.2	82.4 - 84.0	86.4	-3.2
2023	81.5	80.5 - 82.5	84.8	-3.3	83.8	83.0 - 84.6	86.6	-2.8
2024	82.3	81.3 - 83.3	85.2	-2.9	84.4	83.6 - 85.2	86.9	-2.5
2025	83.1	82.1 - 84.1	85.6	-2.5	85.0	84.2 - 85.8	87.1	-2.1
2026	83.9	82.9 - 84.9	85.9	-2.1	85.6	84.8 - 86.4	87.4	-1.8
2027	84.7	83.7 - 85.7	86.3	-1.6	86.2	85.4 - 87.0	87.6	-1.4
2028	85.4	84.4 - 86.4	86.7	-1.2	86.8	86.0 - 87.6	87.9	-1.1
2029	86.2	85.2 - 87.2	87.0	-0.8	87.4	86.6 - 88.2	88.1	-0.7
2030	87.0	86.0 - 88.0	87.4	-0.4	88.0	87.2 - 88.8	88.3	-0.4
2031 (target)	87.8	86.8 - 88.8	87.8	0.0	88.6	87.8 - 89.4	88.6	0.0

Notes:

1. Life expectancy at birth used for baseline (2006) are estimates produced by the ABS for the period 2005-2007.
2. Variability bands for non-Indigenous life expectancy and the gap are unable to be estimated from available data. These statistics have not been estimated for the baseline year and thus cannot be projected.

Life Expectancy – Northern Territory

Life expectancy at birth: Indigenous with 95% variability bands (VB), non-Indigenous and gap, 2005-07 (baseline) to 2031 (target), NT

	Males				Females			
	Indigenous	95% VB	Non-Indig.	Gap (years)	Indigenous	95% VB	Non-Indig.	Gap (years)
2006 (Baseline)	61.5	60.5 - 62.5	75.7	-14.2	69.2	68.4 - 70.0	81.2	-12.0
2007	62.3	61.3 - 63.3	76.0	-13.6	70.1	69.3 - 70.9	81.7	-11.5
2008	63.2	62.2 - 64.2	76.3	-13.1	71.1	70.3 - 71.9	82.1	-11.0
2009	64.0	63.0 - 65.0	76.5	-12.5	72.0	71.2 - 72.8	82.6	-10.6
2010	64.9	63.9 - 65.9	76.8	-11.9	73.0	72.2 - 73.8	83.1	-10.1
2011	65.7	64.7 - 66.7	77.1	-11.4	73.9	73.1 - 74.7	83.5	-9.6
2012	66.6	65.6 - 67.6	77.4	-10.8	74.9	74.1 - 75.7	84.0	-9.1
2013	67.4	66.4 - 68.4	77.7	-10.2	75.8	75.0 - 76.6	84.5	-8.6
2014	68.3	67.3 - 69.3	78.0	-9.7	76.8	76.0 - 77.6	84.9	-8.2
2015	69.1	68.1 - 70.1	78.2	-9.1	77.7	76.9 - 78.5	85.4	-7.7
2016	70.0	69.0 - 71.0	78.5	-8.5	78.7	77.9 - 79.5	85.9	-7.2
2017	70.8	69.8 - 71.8	78.8	-8.0	79.6	78.8 - 80.4	86.4	-6.7
2018	71.7	70.7 - 72.7	79.1	-7.4	80.6	79.8 - 81.4	86.8	-6.2
2019	72.5	71.5 - 73.5	79.4	-6.8	81.5	80.7 - 82.3	87.3	-5.8
2020	73.4	72.4 - 74.4	79.6	-6.2	82.5	81.7 - 83.3	87.8	-5.3
2021	74.2	73.2 - 75.2	79.9	-5.7	83.4	82.6 - 84.2	88.2	-4.8
2022	75.1	74.1 - 76.1	80.2	-5.1	84.4	83.6 - 85.2	88.7	-4.3
2023	75.9	74.9 - 76.9	80.5	-4.5	85.3	84.5 - 86.1	89.2	-3.8
2024	76.8	75.8 - 77.8	80.8	-4.0	86.3	85.5 - 87.1	89.6	-3.4
2025	77.6	76.6 - 78.6	81.1	-3.4	87.2	86.4 - 88.0	90.1	-2.9
2026	78.5	77.5 - 79.5	81.3	-2.8	88.2	87.4 - 89.0	90.6	-2.4
2027	79.3	78.3 - 80.3	81.6	-2.3	89.1	88.3 - 89.9	91.0	-1.9
2028	80.2	79.2 - 81.2	81.9	-1.7	90.1	89.3 - 90.9	91.5	-1.4
2029	81.0	80.0 - 82.0	82.2	-1.1	91.0	90.2 - 91.8	92.0	-1.0
2030	81.9	80.9 - 82.9	82.5	-0.6	92.0	91.2 - 92.8	92.4	-0.5
2031 (target)	82.7	81.7 - 83.7	82.7	0.0	92.9	92.1 - 93.7	92.9	0.0

Notes:

1. Life expectancy at birth used for baseline (2006) are estimates produced by the ABS for the period 2005-2007.
2. Variability bands for non-Indigenous life expectancy and the gap are unable to be estimated from available data. These statistics have not been estimated for the baseline year and thus cannot be projected.

All-cause mortality

The following table presents how many Indigenous deaths would need to be prevented between 2006 and 2031 to close the gap in age-standardised mortality. Nationally (NSW, Qld, WA, SA & NT combined), the total number of recorded Indigenous deaths needs to decrease by 1,200 over the next 25 years to meet the

target. The largest decline in deaths is required in Western Australia (340 deaths), followed by the Northern Territory (300 deaths)

New South Wales

All-cause age standardised mortality rates by Indigenous status, with 95% variability bands (VB), 2006 (baseline) to 2031 (target), NSW

	Indigenous		Non-Indigenous		Rate difference	
	Rate	95% VB	Rate	95% VB	Gap	95% VB
2006 (Baseline)	920.0	826 - 1014	606.5	601 - 612	313.5	198 - 408
2007	899.0	801 - 1002	598.1	592 - 604	300.9	189 - 423
2008	878.0	782 - 979	589.6	584 - 595	288.4	180 - 407
2009	857.1	764 - 956	581.2	576 - 587	275.9	171 - 390
2010	836.1	745 - 932	572.7	567 - 578	263.3	162 - 374
2011	815.1	726 - 909	564.3	559 - 570	250.8	153 - 357
2012	794.1	707 - 886	555.8	551 - 561	238.2	144 - 341
2013	773.1	688 - 863	547.4	542 - 553	225.7	135 - 324
2014	752.1	669 - 840	538.9	534 - 544	213.2	126 - 308
2015	731.1	650 - 817	530.5	525 - 536	200.6	117 - 291
2016	710.1	631 - 793	522.0	517 - 527	188.1	108 - 275
2017	689.1	612 - 770	513.6	509 - 519	175.5	99 - 258
2018	668.2	593 - 747	505.1	500 - 510	163.0	90 - 242
2019	647.2	574 - 724	496.7	492 - 502	150.5	81 - 226
2020	626.2	555 - 701	488.2	483 - 493	137.9	72 - 209
2021	605.2	536 - 678	479.8	475 - 485	125.4	63 - 193
2022	584.2	517 - 655	471.4	467 - 476	112.9	54 - 177
2023	563.2	498 - 632	462.9	458 - 468	100.3	45 - 160
2024	542.2	479 - 609	454.5	450 - 459	87.8	36 - 144
2025	521.2	460 - 586	446.0	442 - 450	75.2	27 - 128
2026	500.2	441 - 563	437.6	433 - 442	62.7	18 - 112
2027	479.3	422 - 541	429.1	425 - 433	50.2	8 - 96
2028	458.3	402 - 518	420.7	416 - 425	37.6	-1 - 80
2029	437.3	383 - 495	412.2	408 - 416	25.1	-10 - 64
2030	416.3	364 - 472	403.8	400 - 408	12.5	-19 - 48
2031 (target)	395.3	345 - 450	395.3	391 - 399	0.0	..

.. Not applicable

Source: AIHW analysis of National Mortality Database

Queensland

All-cause age standardised mortality rates by Indigenous status, with 95% variability bands (VB), 2006 (baseline) to 2031 (target), Qld

	Indigenous		Non-Indigenous		Rate difference	
	Rate	95% VB	Rate	95% VB	Gap	95% VB
2006 (Baseline)	1087.1	977 - 1197	593.8	586 - 601	493.2	383 - 603
2007	1051.6	946 - 1163	578.1	571 - 586	473.5	365 - 595
2008	1016.2	914 - 1124	562.4	555 - 570	453.8	350 - 571
2009	980.8	882 - 1085	546.7	540 - 554	434.0	334 - 547
2010	945.3	850 - 1046	531.0	524 - 538	414.3	318 - 522
2011	909.9	817 - 1007	515.3	508 - 522	394.6	303 - 498
2012	874.4	785 - 968	499.6	493 - 506	374.9	287 - 474
2013	839.0	753 - 929	483.9	477 - 490	355.1	271 - 450
2014	803.6	721 - 890	468.2	462 - 474	335.4	255 - 426
2015	768.1	689 - 851	452.4	446 - 458	315.7	240 - 402
2016	732.7	657 - 812	436.7	431 - 443	295.9	224 - 378
2017	697.2	625 - 773	421.0	415 - 427	276.2	208 - 354
2018	661.8	593 - 734	405.3	400 - 411	256.5	193 - 329
2019	626.4	561 - 695	389.6	384 - 395	236.8	177 - 305
2020	590.9	529 - 656	373.9	369 - 379	217.0	161 - 281
2021	555.5	497 - 617	358.2	353 - 363	197.3	145 - 257
2022	520.0	465 - 579	342.5	338 - 347	177.6	130 - 233
2023	484.6	433 - 540	326.8	322 - 331	157.8	114 - 209
2024	449.2	400 - 501	311.1	307 - 315	138.1	98 - 185
2025	413.7	368 - 462	295.3	291 - 299	118.4	82 - 161
2026	378.3	336 - 423	279.6	276 - 284	98.6	67 - 137
2027	342.8	304 - 384	263.9	260 - 268	78.9	51 - 112
2028	307.4	272 - 345	248.2	245 - 252	59.2	35 - 88
2029	272.0	240 - 305	232.5	229 - 236	39.5	20 - 64
2030	236.5	209 - 266	216.8	214 - 220	19.7	4 - 39
2031 (target)	201.1	177 - 227	201.1	198 - 204	0.0	..

.. Not applicable

Source: AIHW analysis of National Mortality Database

South Australia

All-cause age standardised mortality rates by Indigenous status, with 95% variability bands (VB), 2006 (baseline) to 2031 (target), SA

	Indigenous		Non-Indigenous		Rate difference	
	Rate	95% VB	Rate	95% VB	Gap	95% VB
2006 (Baseline)	964.0	766 - 1162	607.9	597 - 619	356.1	158 - 554
2007	938.4	745 - 1146	596.6	586 - 608	341.8	158 - 564

2008	912.9	724 - 1115	585.3	574 - 596	327.6	151 - 541
2009	887.3	704 - 1084	573.9	563 - 585	313.4	144 - 519
2010	861.7	683 - 1053	562.6	552 - 573	299.1	137 - 497
2011	836.2	663 - 1022	551.3	541 - 562	284.9	130 - 474
2012	810.6	643 - 991	540.0	530 - 550	270.6	123 - 452
2013	785.1	622 - 960	528.7	519 - 539	256.4	116 - 430
2014	759.5	602 - 929	517.4	508 - 527	242.1	109 - 408
2015	734.0	581 - 898	506.1	497 - 516	227.9	102 - 385
2016	708.4	561 - 867	494.7	486 - 504	213.7	95 - 363
2017	682.8	540 - 836	483.4	474 - 493	199.4	88 - 341
2018	657.3	520 - 805	472.1	463 - 481	185.2	81 - 318
2019	631.7	499 - 774	460.8	452 - 470	170.9	74 - 296
2020	606.2	479 - 743	449.5	441 - 458	156.7	67 - 274
2021	580.6	458 - 713	438.2	430 - 446	142.4	60 - 252
2022	555.0	438 - 682	426.9	419 - 435	128.2	53 - 230
2023	529.5	417 - 651	415.5	408 - 423	113.9	46 - 207
2024	503.9	396 - 620	404.2	397 - 412	99.7	39 - 185
2025	478.4	376 - 589	392.9	385 - 400	85.5	32 - 163
2026	452.8	355 - 559	381.6	374 - 389	71.2	25 - 141
2027	427.3	335 - 528	370.3	363 - 377	57.0	17 - 119
2028	401.7	314 - 497	359.0	352 - 366	42.7	10 - 97
2029	376.1	293 - 466	347.7	341 - 354	28.5	3 - 75
2030	350.6	273 - 436	336.3	330 - 343	14.2	-4 - 53
2031 (target)	325.0	252 - 405	325.0	319 - 331	0.0	..

.. Not applicable

Source: AIHW analysis of National Mortality Database

Northern Territory

All-cause age standardised mortality rates by Indigenous status, with 95% variability bands (VB), 2006 (baseline) to 2031 (target), NT

	Indigenous		Non-Indigenous		Rate difference	
	Rate	95% VB	Rate	95% VB	Gap	95% VB
2006 (Baseline)	1605.4	1416 - 1795	634.1	568 - 700	971.3	771 - 1172
2007	1556.7	1370 - 1754	624.2	556 - 693	932.4	735 - 1150
2008	1508.0	1327 - 1699	614.4	547 - 682	893.6	703 - 1103
2009	1459.2	1284 - 1645	604.5	538 - 672	854.7	672 - 1057
2010	1410.5	1241 - 1590	594.6	530 - 661	815.9	640 - 1010
2011	1361.8	1197 - 1536	584.8	521 - 650	777.0	609 - 963
2012	1313.1	1154 - 1481	574.9	512 - 639	738.2	577 - 916
2013	1264.4	1111 - 1427	565.0	503 - 628	699.3	546 - 870
2014	1215.6	1068 - 1372	555.2	494 - 617	660.5	514 - 823

2015	1166.9	1025 - 1318	545.3	486 - 606	621.6	483 - 776
2016	1118.2	982 - 1263	535.4	477 - 595	582.8	451 - 730
2017	1069.5	938 - 1209	525.6	468 - 584	543.9	420 - 683
2018	1020.8	895 - 1154	515.7	459 - 573	505.1	388 - 636
2019	972.1	852 - 1100	505.8	450 - 562	466.2	357 - 589
2020	923.3	809 - 1045	496.0	442 - 551	427.4	325 - 543
2021	874.6	765 - 991	486.1	433 - 540	388.5	294 - 496
2022	825.9	722 - 936	476.2	424 - 529	349.7	262 - 449
2023	777.2	679 - 882	466.4	415 - 518	310.8	231 - 403
2024	728.5	636 - 827	456.5	406 - 507	272.0	199 - 356
2025	679.7	592 - 773	446.6	398 - 496	233.1	168 - 310
2026	631.0	549 - 718	436.8	389 - 485	194.3	136 - 263
2027	582.3	506 - 664	426.9	380 - 475	155.4	104 - 216
2028	533.6	463 - 609	417.0	371 - 464	116.6	73 - 169
2029	484.9	420 - 555	407.2	362 - 453	77.7	41 - 123
2030	436.2	376 - 500	397.3	353 - 442	38.9	10 - 76
2031 (target)	387.4	333 - 445	387.4	345 - 431	0.0	..

.. Not applicable

Source: AIHW analysis of National Mortality Database