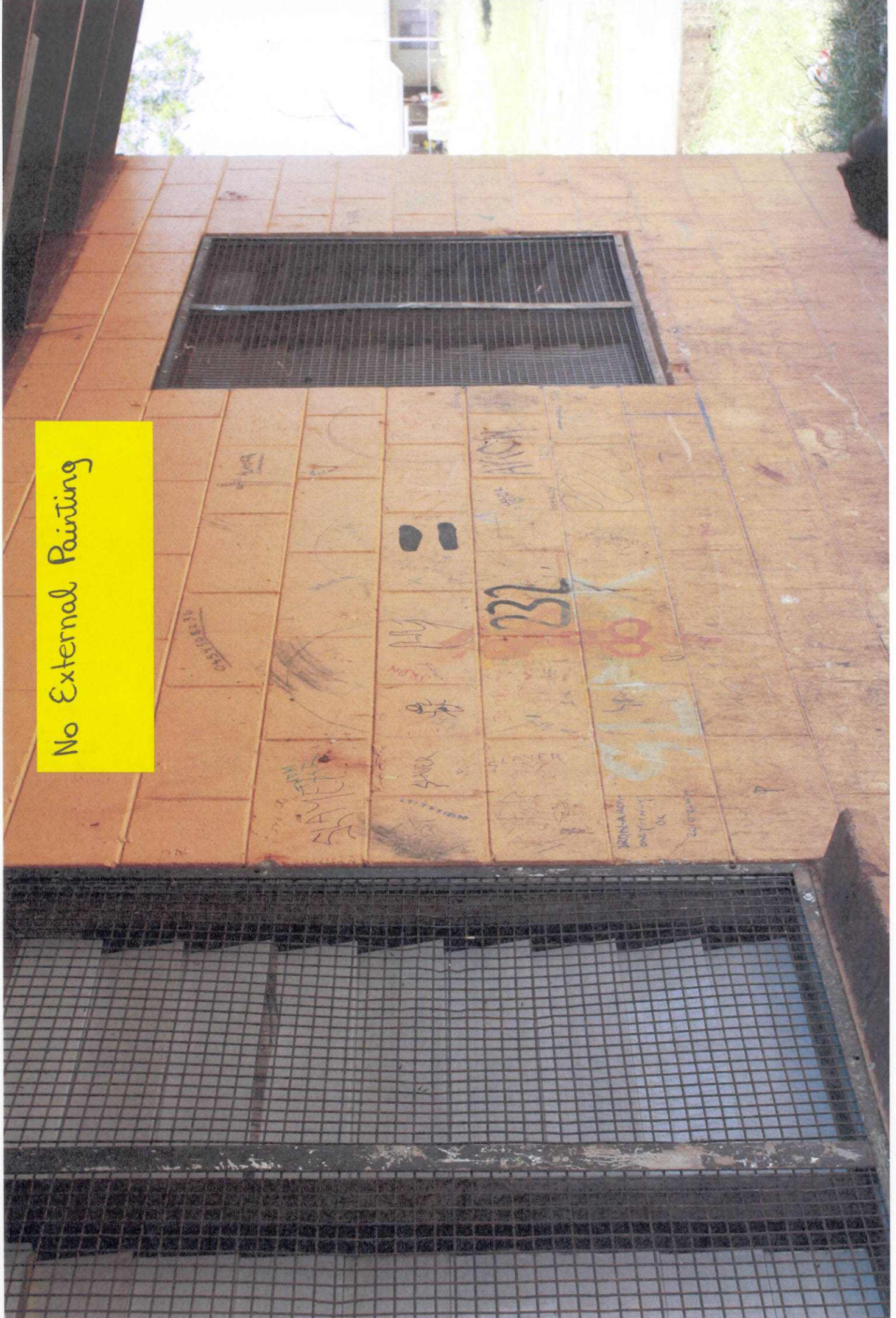
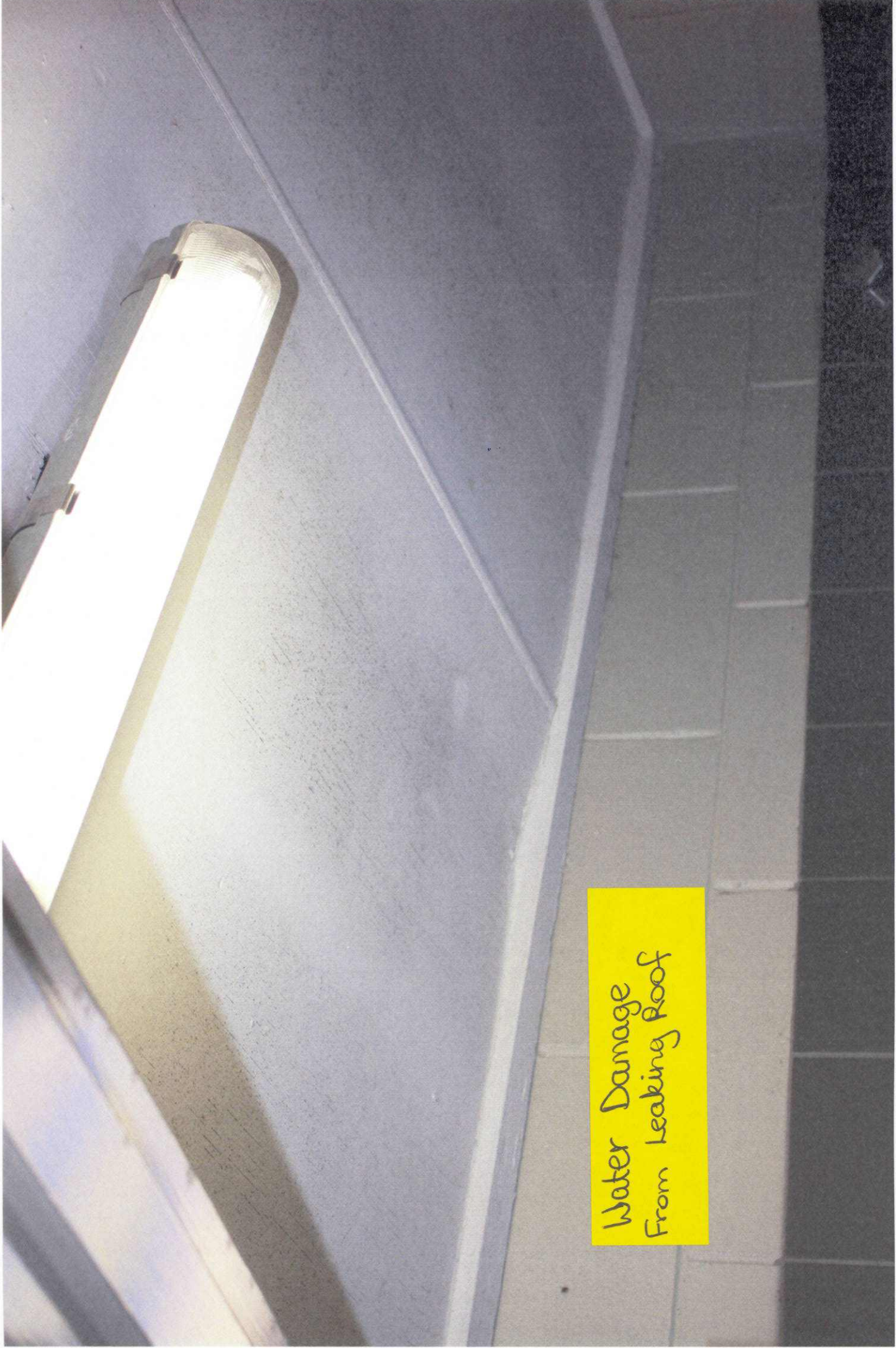


HOUSE
232

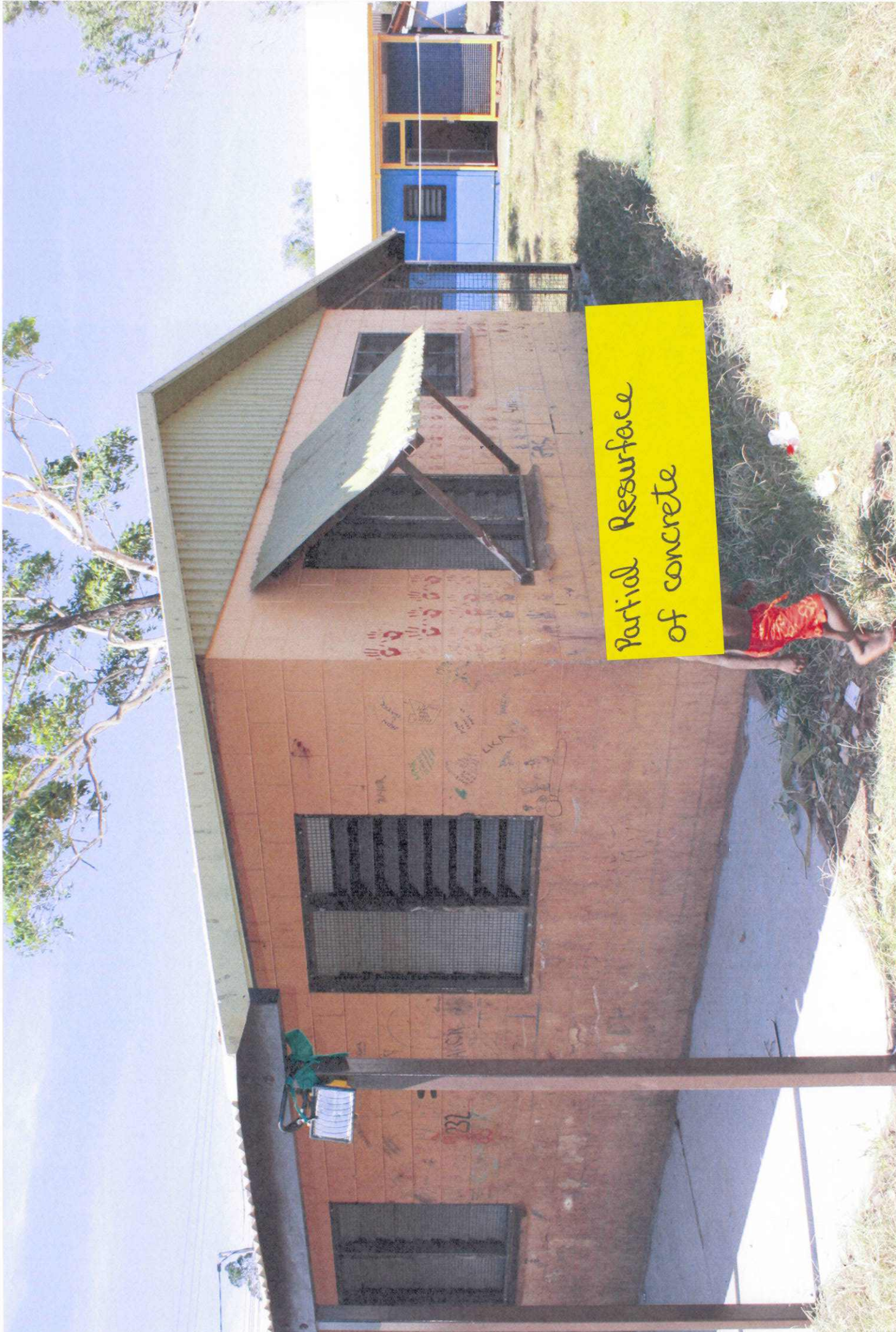
HOUSE
232

No External Painting

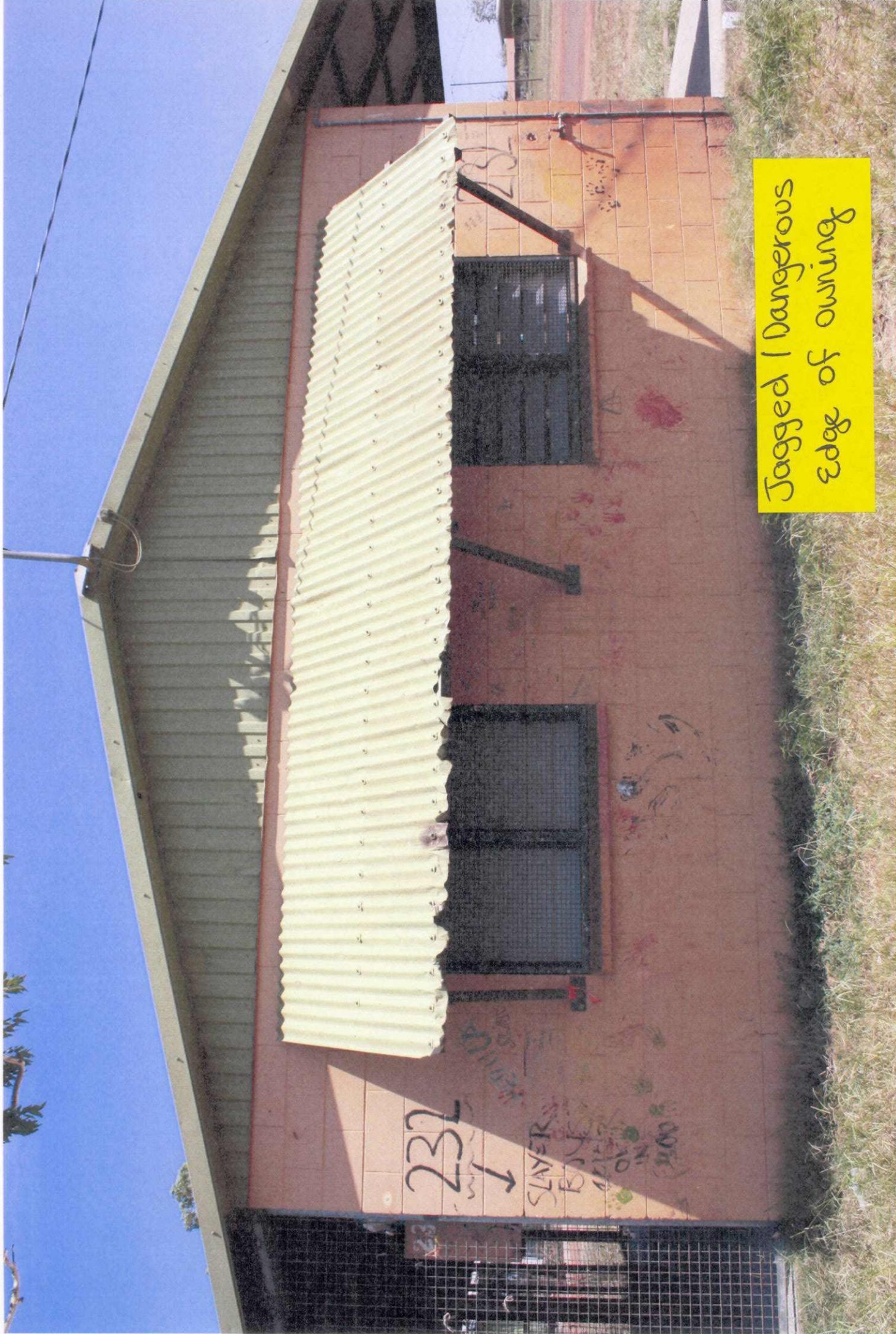




Water Damage
From Leaking Roof



Partial Resurface
of concrete



Jagged / Dangerous
Edge of awning

232



SLAYER

BUT

ALON

OW

3100



No Protective Flashing
on PVC water inlet



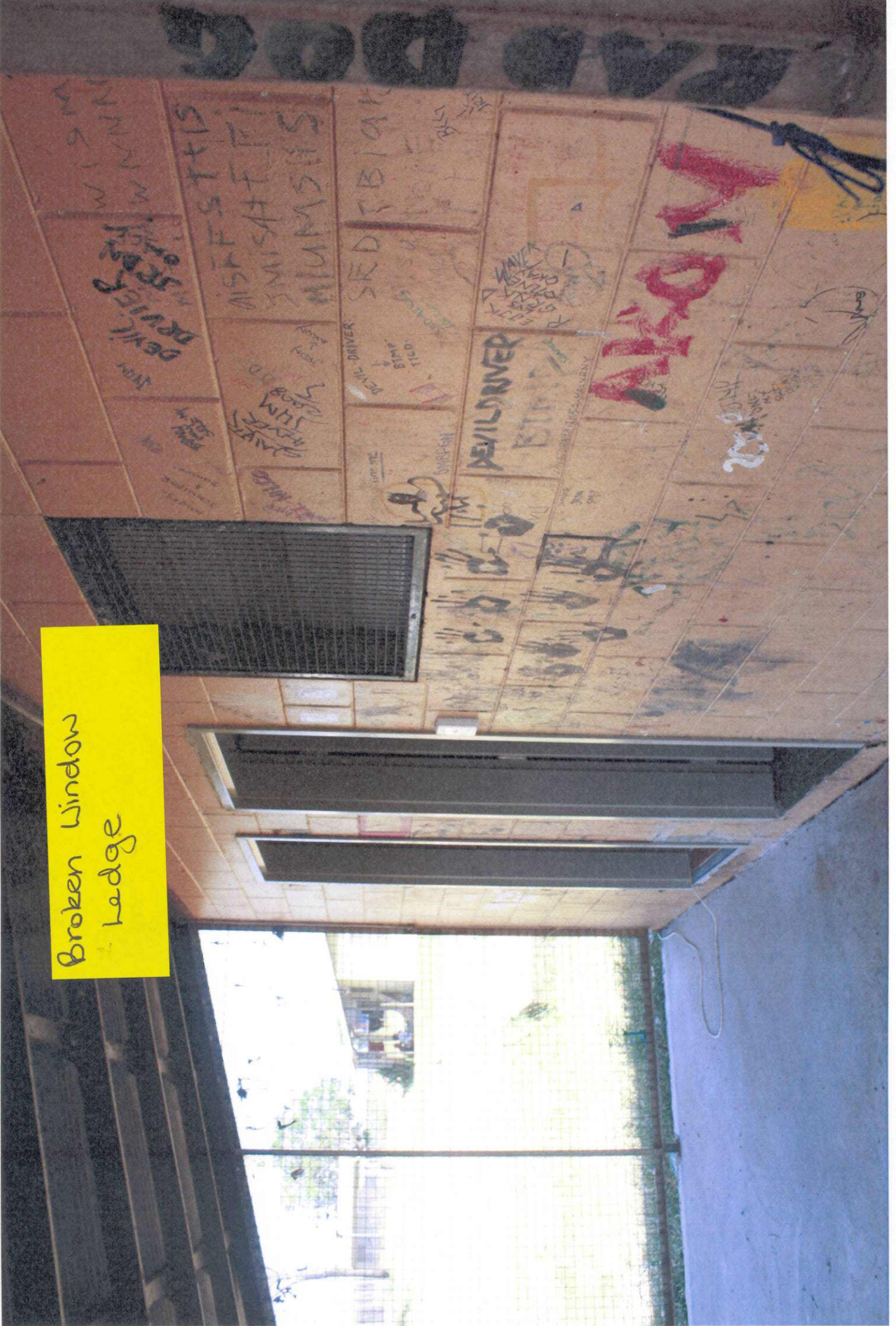
Handwritten notes on the wall paper, including the word "SAGE" and some illegible scribbles.

Handwritten text in blue ink: "ARMY TEST".

Handwritten text in black ink: "MELIA", "LICA", "FEVER", "ERLMOI LME".

No Painting

Broken Window
Ledge




Broken lid on Water Isolator.
Trip Hazard





No Painting



Loose Tin
Hole In Eaves

Water Damage
in Bathroom





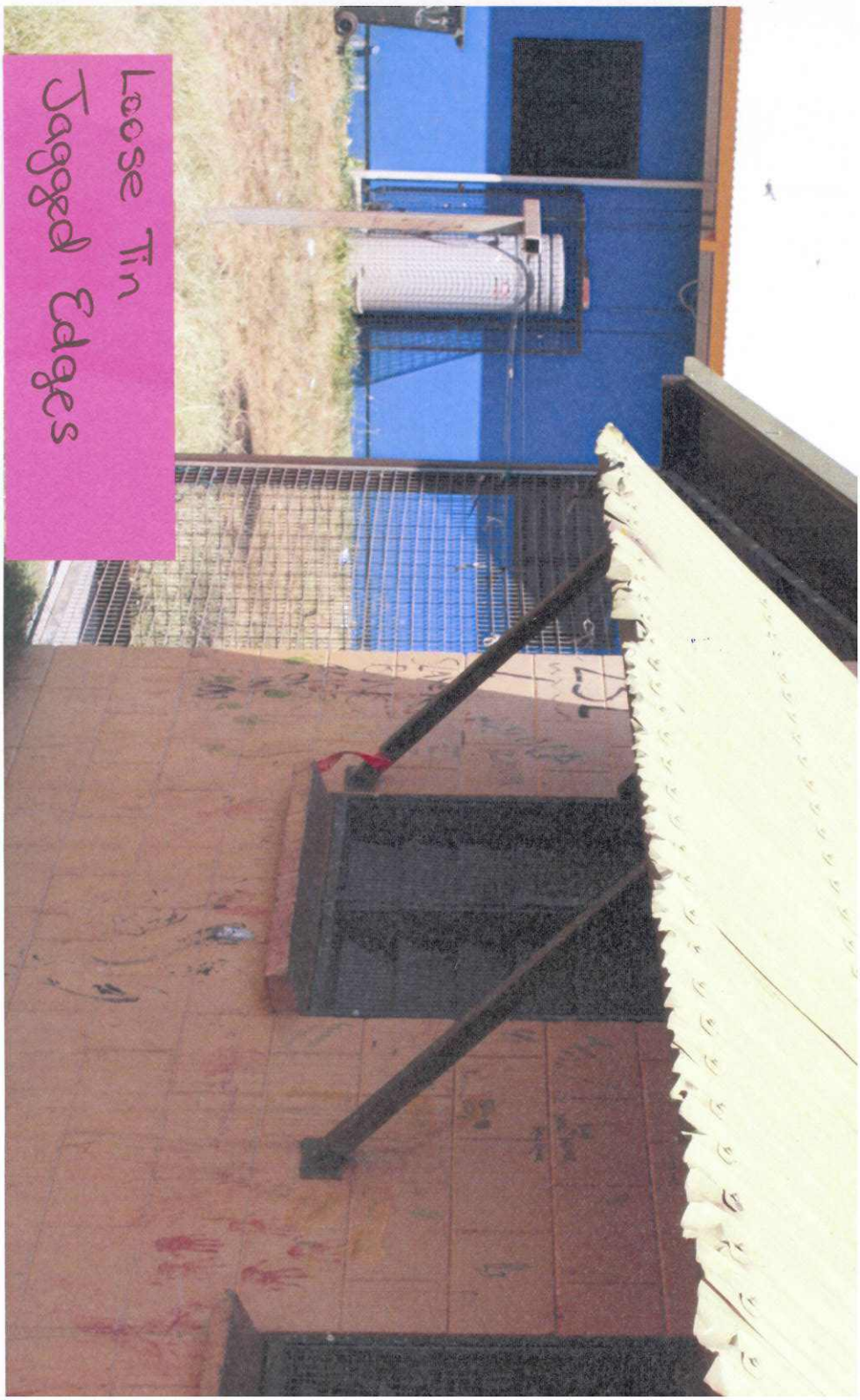
No Protection Of
Water Mains Inlet



No Protection Of
Water Mains Inlet



Loose Tin
Jagged Edges





Partial Concrete
Re Surface

A photograph showing a wooden floor with a section of concrete underlayment exposed. The wooden floor is made of light-colored planks with visible grain and some staining. The concrete underlayment is a light grey color and appears to be partially resurfaced. A pink rectangular label with the text "Partial Resurface" is placed over the concrete area. In the background, a dark metal grate is visible on the wooden floor.

Partial Resurface

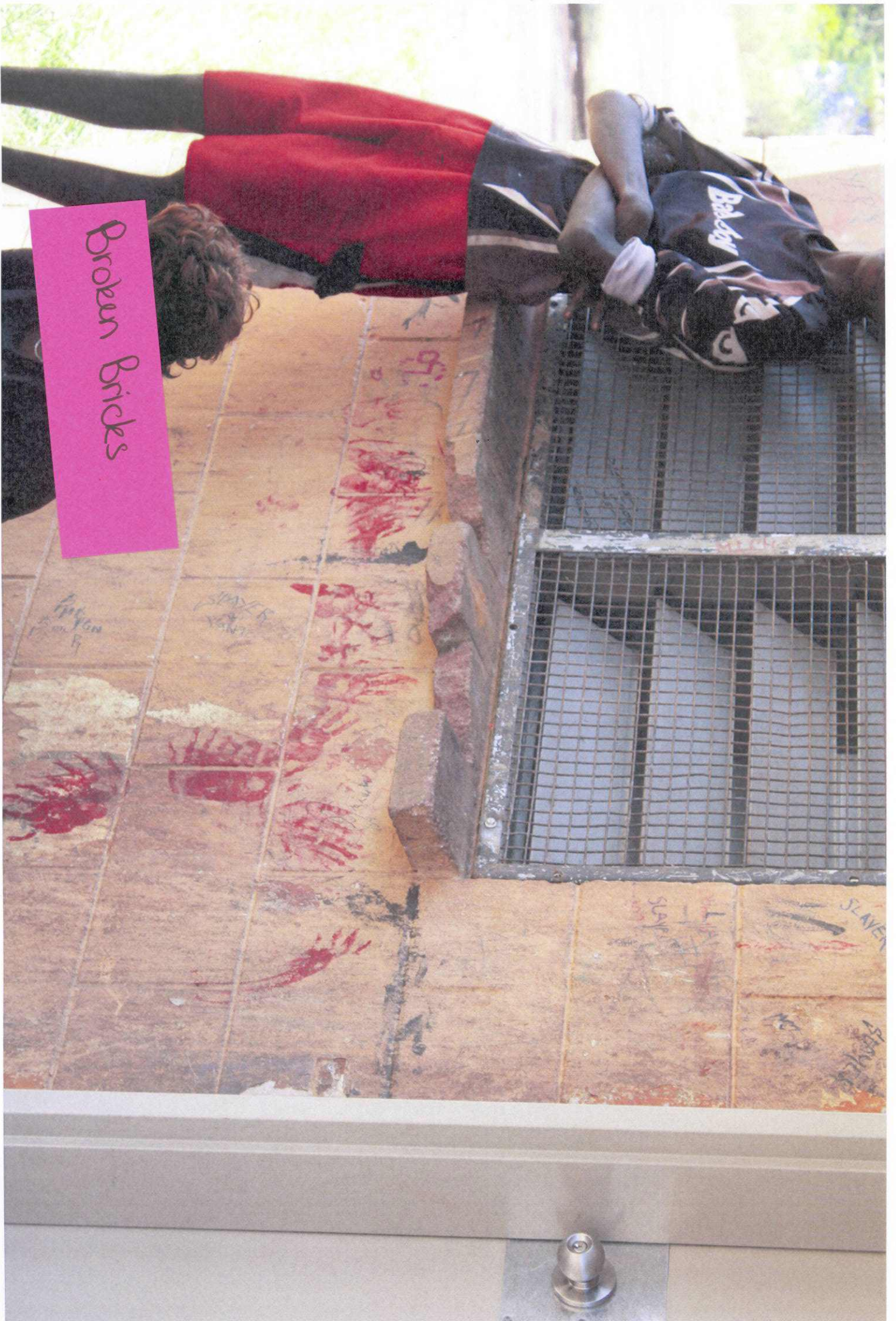
In Complete Filling of
Broken Bricks under
Step



New Front Door
Beside Broken
Bricks



Broken Bricks



Odd Tiles
No Kitchen Cupboards

