



Australian Government



Northern
Territory
Government

Remote Housing NT

Alice Springs - Remediation

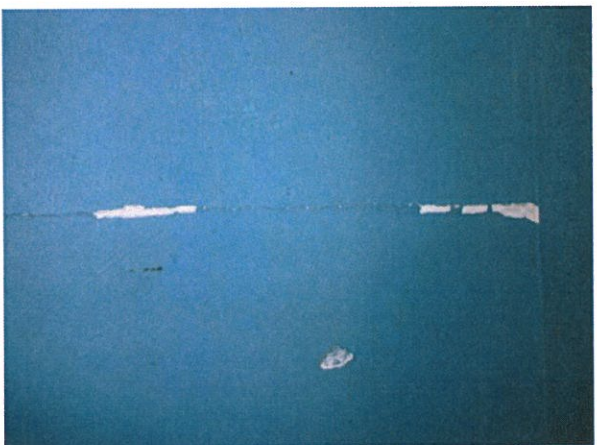
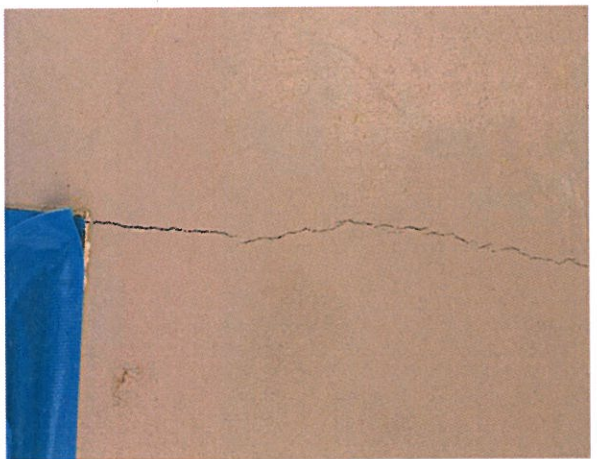
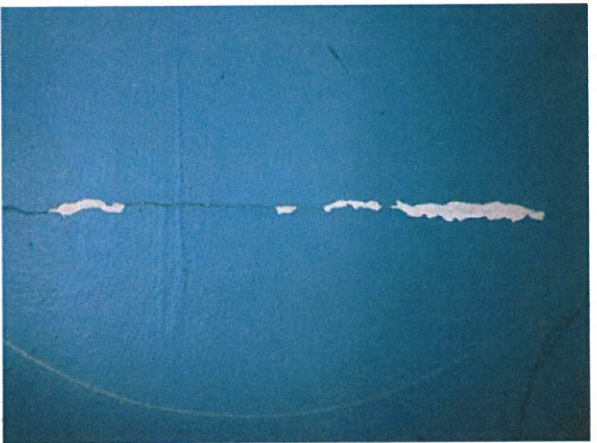
Senate Community Affairs Legislation Committee
Additional Estimates 2011-2012
Cross Portfolio Indigenous Matters

Tabled document: 2

By: MS KATE CUMLEY, GROUP MANAGER, OFFICE
OF REMOTE INDIGENOUS HOUSING

Date: 17 FEBRUARY 2012

working together to help make communities safer and healthier

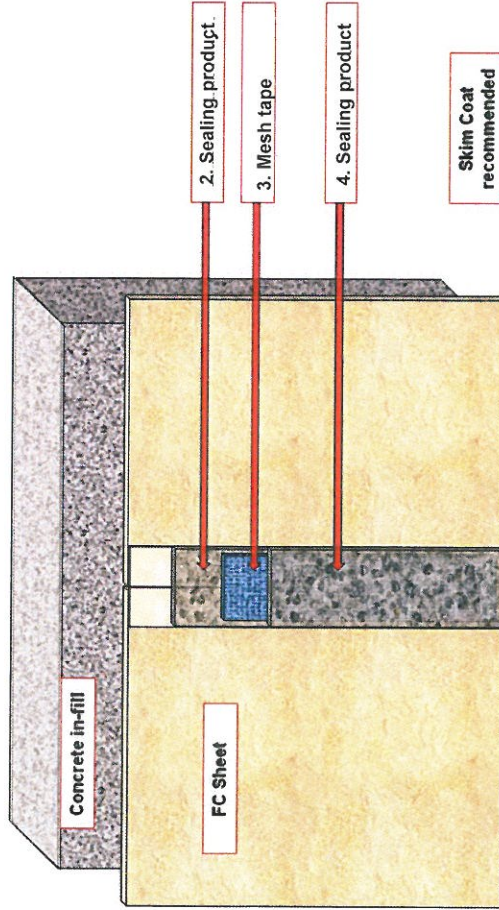


Remote Housing NT
working together to help make communities safer and healthier

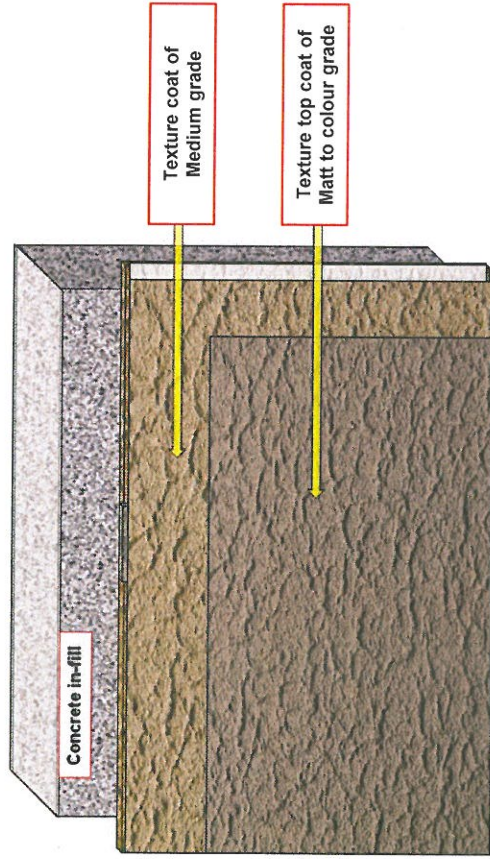
Territory Alliance Remediation to External wall Coatings

Joint Preparation

1. Clean the recesses of the sheet recesses to remove any contaminants which make affect the adhesion of the coating system.
2. Apply a base layer of sealing product into the recessed joints.
3. Bed the Mesh (50mm) into the sealing product.
4. Apply another layer of sealing product into the recessed joint, ensuring that the mesh tape (50mm) is fully encapsulated and flush with the Ritek sheet face.
5. Allow to dry for 24 hours.



Territory Alliance Remediation to External Wall Coatings



Texture Coat

1. Apply texture coat of Medium grade.
2. Apply a top coat of Matt to selected colour.

