



Budget

2019-20

Portfolio Budget Statements 2019-20
Budget Related Paper No. 1.17C

Department of Parliamentary Services

Budget Initiatives and Explanations of
Appropriations Specified by Outcomes
and Programs by Entity

© Commonwealth of Australia 2019

ISSN 1449-5880

This publication is available for your use under a Creative Commons BY Attribution 3.0 Australia licence, with the exception of the Commonwealth Coat of Arms, the Department of Parliamentary Services (DPS) logo, photographs, images, signatures. The full licence terms are available from <http://creativecommons.org/licenses/by/3.0/au/legalcode>.



Use of DPS material under a Creative Commons BY Attribution 3.0 Australia licence requires you to attribute the work (but not in any way that suggests that DPS endorses you or your use of the work).

Department of Parliamentary Services material used 'as supplied'

Provided you have not modified or transformed DPS material in any way including, for example, by changing the DPS text; calculating percentage changes; graphing or charting data; or deriving new statistics from published DPS statistics – then DPS prefers the following attribution:

Source: The Australian Government Department of Parliamentary Services

Derivative material

If you have modified or transformed DPS material, or derived new material from those of the DPS in any way, then DPS prefers the following attribution:

Based on The Australian Government Department of Parliamentary Services data

Use of the Coat of Arms

The terms under which the Coat of Arms can be used are set out on the Department of the Prime Minister and Cabinet website (see www.pmc.gov.au/government/commonwealth-coat-arms).

Other uses

Enquiries regarding this licence and any other use of this document are welcome at:

Mr Caxton Muriuki
A/g Chief Finance Officer
Department of Parliamentary Services
(02) 6277 2741



PARLIAMENT OF AUSTRALIA
DEPARTMENT OF PARLIAMENTARY SERVICES

The Hon Tony Smith MP
Speaker of the House of Representatives
Parliament House
CANBERRA ACT 2600

Senator the Hon Scott Ryan
President of the Senate
Parliament House
CANBERRA ACT 2600

Dear Mr Speaker and Mr President

I hereby submit Portfolio Budget Statements in support of the 2019-20 Budget for the Department of Parliamentary Services.

These statements have been developed, and are submitted to the Parliament, as a statement on the outcomes for the department.

I present these statements to provide accountability to the Parliament and, through it, the public.

Yours sincerely

Rob Stefanic
Secretary

28 March 2019

Abbreviations and conventions

The following notation may be used:

NEC/nec	not elsewhere classified
-	nil
..	not zero, but rounded to zero
na	not applicable (unless otherwise specified)
nfp	not for publication
\$m	\$ million
\$b	\$ billion

Figures in tables and in the text may be rounded. Figures in text are generally rounded to one decimal place, whereas figures in tables are generally rounded to the nearest thousand. Discrepancies in tables between totals and sums of components are due to rounding.

Enquiries

Should you have any enquiries regarding this publication please contact Mr Caxton Muriuki, A/g Chief Finance Officer, Department of Parliamentary Services (02) 6277 2741.

Links to Portfolio Budget Statements (including Portfolio Additional Estimates Statements and Portfolio Supplementary Additional Statements) can be located on the Australian Government Budget website at: www.budget.gov.au.

USER GUIDE

The purpose of the *2019-20 Portfolio Budget Statements* (PB Statements) is to inform Senators and Members of Parliament of the proposed allocation of resources to government outcomes by entities within the portfolio. Entities receive resources from the annual appropriations acts, special appropriations (including standing appropriations and special accounts), and revenue from other sources.

A key role of the PB Statements is to facilitate the understanding of proposed annual appropriations in *Appropriation Bills (No. 1 and No. 2) 2019-20* (or *Appropriation (Parliamentary Departments) Bill (No. 1) 2019-20* for the parliamentary departments). In this sense, the PB Statements are Budget related papers and are declared by the Appropriation Acts to be 'relevant documents' to the interpretation of the Acts according to section 15AB of the *Acts Interpretation Act 1901*.

The PB Statements provide information, explanation and justification to enable Parliament to understand the purpose of each outcome proposed in the Bills.

As required under section 12 of the *Charter of Budget Honesty Act 1998*, only entities within the general government sector are included as part of the Commonwealth general government sector fiscal estimates and produce PB Statements where they receive funding (either directly or via portfolio departments) through the annual appropriation acts.

The Enhanced Commonwealth Performance Framework

The following diagram outlines the key components of the enhanced Commonwealth performance framework. The diagram identifies the content of each of the publications and the relationship between them. Links to the publications for each entity within the portfolio can be found in the introduction to Section 2: Outcomes and planned performance.

Enhanced Commonwealth Performance Framework
- key components of relevant publications

Portfolio Budget Statements (May)
Portfolio based

Supports Annual Appropriations. Informs Senators and Members of Parliament of the proposed allocation of other resources to **government outcomes and programs**.

Provides links to **relevant programs** undertaken by other Commonwealth entities.

Provides high level performance information for current, ongoing programs, particularly a **forecast of performance for the current year**.

Provides **detailed** prospective performance information for proposed new budget measures that require a **new program** or **significantly change an existing program**.

Corporate Plan (August)
Entity based

Primary planning document of a Commonwealth entity.

Sets out the **purposes** of the entity, the **activities** it will undertake to achieve its purposes and the **results** it expects to achieve over a minimum four year period.

Describes the **environment** in which the entity **operates**, the **capability** it requires to undertake **activities** and a discussion of **risk**.

Explains how the entity's **performance** will be **measured** and **assessed**.



Annual Performance Statement (October following year)
Entity based

Included in the Commonwealth entity's Annual Report. Focuses on **recent performance**.

Reports on the **actual performance results** for the year against the **forecasts** made in the **corporate plan** and **Portfolio Budget Statements**, and provides other performance information relevant to the entity.

Provides an **analysis** of the factors that **contributed** to the **entity's performance results**.

CONTENTS

DEPARTMENTAL OVERVIEW	1
SECTION 1: ENTITY OVERVIEW AND RESOURCES	3
1.1 Strategic direction statement	3
1.2 Entity resource statement	4
1.3 Budget measures.....	5
SECTION 2: OUTCOMES AND PLANNED PERFORMANCE	6
2.1 Budgeted expenses and performance for Outcome 1.....	7
SECTION 3: BUDGETED FINANCIAL STATEMENTS.....	11
3.1 Budgeted financial statements.....	11
3.2 Budgeted financial statements tables.....	12
GLOSSARY	21

DEPARTMENTAL OVERVIEW

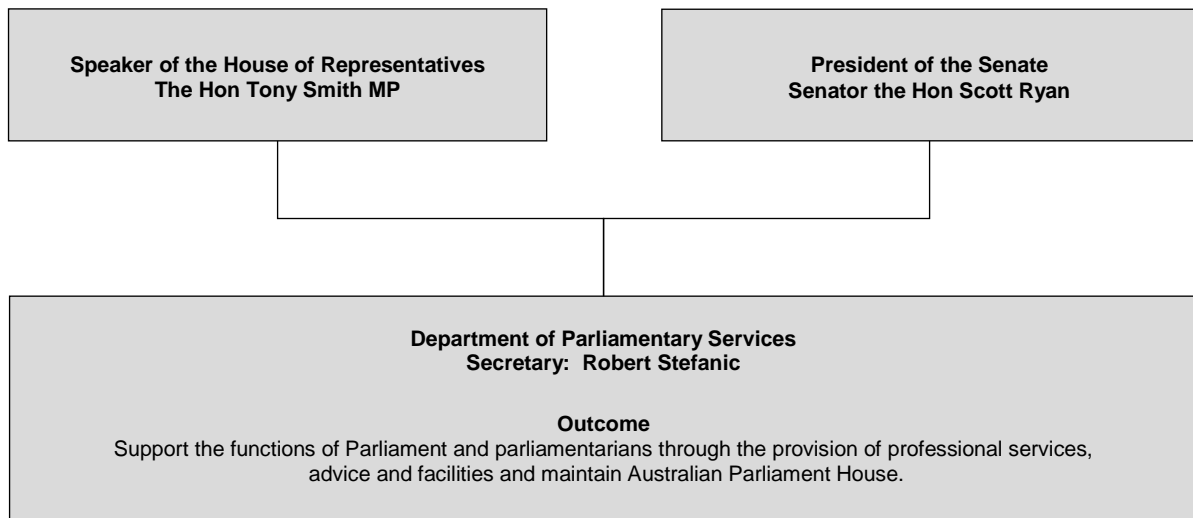
The Department of Parliamentary Services (DPS) is one of four parliamentary departments supporting the Australian Parliament. DPS reports to the Presiding Officers of the Parliament (the Speaker of the House of Representatives and the President of the Senate).

DPS supports Australia's Parliament and parliamentarians through innovative, unified and client focused services. We are proud to be custodians for Australian Parliament House (APH) as the working symbol of Australian democracy and as a significant destination for our citizens and international visitors alike.

DPS provides services, advice and facilities to support the functioning of the Australian Parliament, and the work of parliamentarians. Working in collaboration with the house departments, DPS provides, or facilitates the following:

- library and research services
- information and communication technology services
- security services
- building, ground and design integrity services
- audio visual and Hansard services
- art services
- visitor services
- food and beverage services
- retail, health, banking, and childcare services, and
- corporate, administrative and strategic services for DPS.

Figure 1: Department of Parliamentary Services reporting structure and outcomes



DEPARTMENT OF PARLIAMENTARY SERVICES

Section 1: Entity overview and resources

1.1 STRATEGIC DIRECTION STATEMENT

The Department's purpose is to support the work of the Australian Parliament by providing effective, high quality and sustainable services to parliamentarians and building occupants. As custodians of Australian Parliament House we are responsible for delivering a broad range of services and experiences that enable engagement with the parliamentary process.

Four strategic themes provide the planning and performance framework against which DPS operates.

These strategic themes are:

- Respond to the changing needs of the Parliament
- Enhance the Parliament's engagement with the community
- Effective stewardship of Australian Parliament House, and
- Effective delivery of the Australian Parliament House Works Program.

DPS operates in an environment with a range of significant challenges. Optimising our service capability and working collaboratively to achieve positive outcomes will be essential in addressing these challenges.

Achieving high standards of performance, strengthening collaborative working arrangements and actively managing risk in a shared operating environment will continue to be essential elements of DPS' delivery strategy.

1.2 ENTITY RESOURCE STATEMENT

Table 1.1 shows the total funding from all sources available to the entity for its operations and to deliver programs and services on behalf of the Government.

The table summarises how resources will be applied by outcome (government strategic policy objectives) and by administered (on behalf of the Government or the public) and departmental (for the entity's operations) classification.

Information in this table is presented on a resourcing (that is, appropriations/cash available) basis, whilst the 'Budgeted expenses by Outcome 1' tables in Section 2 and the financial statements in Section 3 are presented on an accrual basis.

Table 1.1: DPS resource statement — Budget estimates for 2019-20 as at Budget April 2019

	2018-19 Estimated actual \$'000	2019-20 Estimate \$'000
Departmental		
Annual appropriations - ordinary annual services ^(a)		
Prior year appropriations available	26,444	24,268
Departmental appropriation ^(b)	126,347	125,302
s74 External Revenue ^(c)	14,630	15,030
Departmental capital budget ^(d)	19,609	17,140
Total departmental resourcing	187,030	181,740
Administered		
Annual appropriations - ordinary annual services ^(a)	5,188	11,565
Annual appropriations - other services - non-operating ^(e)		
Administered assets and liabilities	45,426	50,632
Total resourcing for DPS	237,644	243,937
	2018-19	2019-20
Average staffing level (number)	900	900

All figures shown above are GST exclusive - these may not match figures in the cash flow statement.

Prepared on a resourcing (that is, appropriations available) basis.

(a) *Appropriation (Parliamentary Departments) Bill (No. 1) 2019-20.*

(b) Excludes departmental capital budget (DCB).

(c) Estimated External Revenue receipts under section 74 of the *PGPA Act*.

(d) Departmental capital budgets are not separately identified in *Appropriation (Parliamentary Departments) Bill (No.1)* and form part of ordinary annual services items. Please refer to Table 3.5 for further details. For accounting purposes, this amount has been designated as a 'contribution by owner'.

(e) *Appropriation (Parliamentary Departments) Bill (No. 1) 2019-20.* Please refer to Table 3.10 for further details. For accounting purposes, this amount is designated as a 'contribution by owner'.

Table 1.1: DPS resource statement — Budget estimates for 2019-20 as at Budget April 2019 (continued)

Third party payments from and on behalf of other entities

	2018-19 Estimated actual \$'000	2019-20 Estimate \$'000
Payments made on behalf of another entity (as disclosed in the respective entity's resource statement)		
Department of Finance		
<i>Parliamentary Business Resources Act 2017</i>	20,617	20,338
Total Payments made on behalf of other agencies	20,617	20,338

1.3 BUDGET MEASURES

Budget measures in Part 1 relating to DPS are detailed in Budget Paper No. 2 and are summarised below.

Table 1.2: Entity 2019-20 Budget measures - Measures announced since the 2018-19 Mid-Year Economic and Fiscal Outlook (MYEFO)

	Program	2018-19 \$'000	2019-20 \$'000	2020-21 \$'000	2021-22 \$'000	2022-23 \$'000
Expense measures						
Parliamentary Departments - additional funding	1.1	-	2,974	154	154	154
Total Administered Expenses		-	2,974	154	154	154
Capital measures						
Parliamentary Departments - additional funding	1.1	200	14,349	13,900	3,337	-
Total Administered capital		200	14,349	13,900	3,337	-
Total measures						
Administered		200	17,323	14,054	3,491	154
Total		200	17,323	14,054	3,491	154

Prepared on a Government Finance Statistics (fiscal) basis. Figures displayed as a negative (-) represent a decrease in funds and a positive (+) represent an increase in funds.

Section 2: Outcomes and planned performance

Government outcomes are the intended results, impacts or consequences of actions by the Government on the Australian community. Commonwealth programs are the primary vehicle by which government entities achieve the intended results of their outcome statements. Entities are required to identify the programs which contribute to government outcomes over the Budget and forward years.

Each outcome is described below together with its related programs. The following provides detailed information on expenses for each outcome and program, further broken down by funding source.

Note:

Performance reporting requirements in the Portfolio Budget Statements are part of the enhanced Commonwealth performance framework established by the *Public Governance, Performance and Accountability Act 2013*. It is anticipated that the performance criteria described in Portfolio Budget Statements will be read with broader information provided in an entity's corporate plans and annual performance statements – included in Annual Reports - to provide an entity's complete performance story.

The most recent corporate plan and the most recent annual performance statement for DPS can be found at:

https://www.aph.gov.au/About_Parliament/Parliamentary_Departments/Department_of_Parliamentary_Services/Publications.

2.1 BUDGETED EXPENSES AND PERFORMANCE FOR OUTCOME 1

Outcome 1: Support the functions of Parliament and parliamentarians through the provision of professional services, advice and facilities and maintain Australian Parliament House

Budgeted expenses for Outcome 1

This table shows how much the entity intends to spend (on an accrual basis) on achieving the outcome, broken down by program, as well as by Administered and Departmental funding sources.

Table 2.1.1: Budgeted expenses for Outcome 1

Outcome 1: Support the functions of Parliament and parliamentarians through the provision of professional services, advice and facilities and maintain Australian Parliament House					
	2018-19 Estimated actual \$'000	2019-20 Budget \$'000	2020-21 Forward estimate \$'000	2021-22 Forward estimate \$'000	2022-23 Forward estimate \$'000
Program 1.1: Parliamentary Services					
Departmental expenses					
Departmental appropriation	126,347	125,302	126,258	127,422	128,419
s74 External Revenue ^(a)	14,630	15,030	15,030	15,030	15,030
Expenses not requiring appropriation in the Budget year ^(b)	22,898	23,124	23,853	24,326	24,326
Departmental total	163,875	163,456	165,141	166,778	167,775
Total expenses for program 1.1	163,875	163,456	165,141	166,778	167,775
Program 1.2: Parliament House works Program					
Administered expenses					
Ordinary annual services (Appropriation (Parliamentary Departments) Bill No. 1)	6,249	11,565	8,850	8,964	9,048
Expenses not requiring appropriation in the Budget year ^(b)	34,606	33,018	34,251	35,557	35,557
Administered total	40,855	44,583	43,101	44,521	44,605
Total expenses for program 1.2	40,855	44,583	43,101	44,521	44,605

Note: Departmental appropriation splits and totals are indicative estimates and may change in the course of the budget year as government priorities change.

(a) Estimated expenses incurred in relation to receipts retained under section 74 of the PGPA Act.

(b) Expenses not requiring appropriation in the Budget year are made up of depreciation expenses, amortisation expenses, make good expenses and audit fees.

Table 2.1.1: Budgeted expenses for Outcome 1 (continued)

	2018-19 Estimated actual \$'000	2019-20 Budget \$'000	2020-21 Forward estimate \$'000	2021-22 Forward estimate \$'000	2022-23 Forward estimate \$'000
Outcome 1 Totals by appropriation type					
Departmental expenses					
Departmental appropriation	126,347	125,302	126,258	127,422	128,419
s74 External Revenue ^(a)	14,630	15,030	15,030	15,030	15,030
Expenses not requiring appropriation in the Budget year ^(b)	22,898	23,124	23,853	24,326	24,326
Departmental total	163,875	163,456	165,141	166,778	167,775
Administered expenses					
Ordinary annual services (Appropriation (Parliamentary Departments) Bill No. 1)	6,249	11,565	8,850	8,964	9,048
Expenses not requiring appropriation in the Budget year ^(b)	34,606	33,018	34,251	35,557	35,557
Administered total	40,855	44,583	43,101	44,521	44,605
Total expenses for Outcome 1	204,730	208,039	208,242	211,299	212,380
	2018-19	2019-20			
Average staffing level (number)	900	900			

Note: Departmental appropriation splits and totals are indicative estimates and may change in the course of the budget year as government priorities change.

(a) Estimated expenses incurred in relation to receipts retained under section 74 of the PGPA Act.

(b) Expenses not requiring appropriation in the Budget year are made up of depreciation expenses, amortisation expenses, make good expenses and audit fees.

Table 2.1.2: Performance criteria for Outcome 1

Table 2.1.2 below details the performance criteria for each program associated with Outcome 1. It also summarises how each program is delivered and where 2019-20 Budget measures have created new programs or materially changed existing programs.

Outcome 1 – Support the functions of Parliament and parliamentarians through the provision of professional services, advice and facilities and maintain Australian Parliament House		
Program 1.1 – Parliamentary Services		
Delivery	<p>Respond to the changing needs of the Parliament</p> <ul style="list-style-type: none"> • Implement efficient and effective infrastructure, systems and services to respond to the changing needs of the Parliament and our parliamentarians. • Explore and develop innovative technology and systems for the delivery of timely information and services to parliamentarians. • Retain the Parliamentary Library’s position as our client’s preferred and trusted source of high quality information, analysis and advice. <p>Enhance the Parliament’s engagement with the community</p> <ul style="list-style-type: none"> • Enhance our visitor experience and community engagement including the use of social media and emerging technologies. • Enhance electronic access to parliamentary information for the community to easily engage with the parliamentary process. • Champion opportunities for parliamentary strengthening. <p>Effective stewardship of Australian Parliament House (APH)</p> <ul style="list-style-type: none"> • Ensure adaptations of the building uses are strategic, appropriate and reference design integrity principles. • Ensure a secure environment while maintaining public accessibility. • Effectively manage all assets within APH including collections. • Maintain APH and the precinct as benefits its status as an iconic building and location of national significance. 	
Performance information		
Year	Performance criteria ^(a)	Targets
2018-19	<ul style="list-style-type: none"> • Respond to the changing needs of the Parliament • Enhance the Parliament’s engagement with the community • Effective stewardship of APH 	DPS is on track to achieve the majority of 2018-19 targets across the individual performance criteria.
2019-20	<ul style="list-style-type: none"> • Respond to the changing needs of the Parliament • Enhance the Parliament’s engagement with the community • Effective stewardship of APH 	Various targets across the individual performance criteria.
2020-21 and beyond	As per 2019-20	As per 2019-20

Table 2.1.2: Performance criteria for Outcome 1 (continued)

Program 1.2 – Parliament House Works Program		
Delivery	Effective stewardship of Australian Parliament House works program <ul style="list-style-type: none"> Effectively manage the Australian Parliament House Capital Works Plan. Effectively deliver the Security Upgrade Implementation Plan. 	
Performance information		
Year	Performance criteria^(a)	Targets
2018-19	<ul style="list-style-type: none"> Effective stewardship of Australian Parliament House works program 	DPS is on track to achieve the majority of 2018-19 targets across the individual performance criteria.
2019-20	<ul style="list-style-type: none"> Effective stewardship of Australian Parliament House works program 	Various targets across the individual performance criteria.
2020-21 and beyond	As per 2019-20	As per 2019-20
Purpose	The Department's purpose is to support the work of the Australian Parliament by providing effective, high quality and sustainable services to parliamentarians and building occupants. As custodians of Australian Parliament House we are responsible for delivering a broad range of services and experiences that enable engagement with the parliamentary process.	

(a) A number of performance criteria sit below each strategic theme outlining how DPS intend to achieve its purpose. A more comprehensive suite of measures is detailed in DPS' Corporate Plan, and are reported in the Annual Performance Statement (Appendix 2 to the DPS Annual Report).

Section 3: Budgeted financial statements

Section 3 presents budgeted financial statements which provide a comprehensive snapshot of entity finances for the 2019-20 budget year, including the impact of budget measures and resourcing on financial statements.

3.1 BUDGETED FINANCIAL STATEMENTS

3.1.1 Differences between entity resourcing and financial statements

The Resource Statement (Table 1.1) provides a consolidated view of resources available to DPS in 2019-20, appropriated in both the budget year and prior years, where they remain unspent and available. This table is prepared on a cash basis; however, this contrasts to the budgeted financial statements (which are presented in the tables that follow), which are prepared in accordance with Australian Accounting Standards.

3.1.2 Explanatory notes and analysis of budgeted financial statements

Comprehensive Income Statement

When compared with the estimates disclosed in the 2018-19 PB Statements, departmental revenue from Government has increased by \$0.3 million in 2019-20, \$0.3 million in 2020-21 and \$0.4 million in 2021-22. This increase is due to funding provided to establish electronic voting in the House of Representatives.

Departmental own-source revenue has decreased from the 2018-19 PB Statements in line with actual operations.

DPS is projecting a balanced income statement result in 2019-20 and across the forward estimates (excluding depreciation and amortisation, for which the department is not appropriated).

Balance Sheet

The net asset position shows a decrease from the 2018-19 PB Statements of \$9.7 million in 2019-20, \$19.2 million in 2020-21 and \$31.4 million in 2021-22. This decrease is attributable to the effects of depreciation of non-financial assets.

The administered net asset position has minor changes since the 2018-19 PB Statements based on capital expenditure and the effects of depreciation of the non-financial assets.

3.2 BUDGETED FINANCIAL STATEMENTS TABLES

Table 3.1: Comprehensive income statement (showing net cost of services) for the period ended 30 June

	2018-19 Estimated actual \$'000	2019-20 Budget \$'000	2020-21 Forward estimate \$'000	2021-22 Forward estimate \$'000	2022-23 Forward estimate \$'000
EXPENSES					
Employee benefits	86,830	87,779	88,342	89,267	90,027
Suppliers	54,147	52,553	52,946	53,185	53,422
Depreciation and amortisation ^(a)	22,898	23,124	23,853	24,326	24,326
Total expenses	163,875	163,456	165,141	166,778	167,775
LESS:					
OWN-SOURCE INCOME					
Own-source revenue					
Sale of goods and rendering of services	13,900	14,300	14,300	14,300	14,300
Other	730	730	730	730	730
Total own-source income	14,630	15,030	15,030	15,030	15,030
Net cost of by services	(149,245)	(148,426)	(150,111)	(151,748)	(152,745)
Revenue from Government	126,347	125,302	126,258	127,422	128,419
Deficit attributable to the Australian Government	(22,898)	(23,124)	(23,853)	(24,326)	(24,326)
Total comprehensive income/(loss) attributable to the Australian Government	(22,898)	(23,124)	(23,853)	(24,326)	(24,326)

Note: Impact of net cash appropriation arrangements

	2018-19 \$'000	2019-20 \$'000	2020-21 \$'000	2021-22 \$'000	2022-23 \$'000
Total comprehensive income excluding depreciation/ amortisation expenses previously funded through revenue appropriations	-	-	-	-	-
less:					
depreciation/amortisation expenses previously funded through revenue appropriations ^(a)	22,898	23,124	23,853	24,326	24,326
Total comprehensive loss - as per the statement of comprehensive income	(22,898)	(23,124)	(23,853)	(24,326)	(24,326)

Prepared on Australian Accounting Standards basis.

(a) From 2010-11, the Government introduced net cash appropriation arrangements where Bill 1 revenue appropriations for the depreciation/amortisation expenses of non-corporate Commonwealth entities (and select corporate Commonwealth entities) were replaced with a separate capital budget (the Departmental Capital Budget, or DCB) provided through Bill 1 equity appropriations. For information regarding DCBs, please refer to Table 3.5 Departmental Capital Budget Statement.

Table 3.2: Budgeted departmental balance sheet (as at 30 June)

	2018-19 Estimated actual \$'000	2019-20 Budget \$'000	2020-21 Forward estimate \$'000	2021-22 Forward estimate \$'000	2022-23 Forward estimate \$'000
ASSETS					
Financial assets					
Cash and cash equivalents	1,097	1,097	1,097	1,097	1,097
Trade and other receivables	27,763	27,763	27,763	27,763	27,763
Total financial assets	28,860	28,860	28,860	28,860	28,860
Non-financial assets					
Property, plant and equipment	51,191	41,728	32,276	22,918	13,591
Intangibles	42,031	45,510	48,433	50,959	53,573
Inventories	417	417	417	417	417
Other non-financial Assets	4,811	4,811	4,811	4,811	4,811
Total non-financial assets	98,450	92,466	85,937	79,105	72,392
Total assets	127,310	121,326	114,797	107,965	101,252
LIABILITIES					
Payables					
Suppliers	4,250	4,250	4,250	4,250	4,250
Other Payables	559	559	559	559	559
Personal Benefits	638	638	638	638	638
Total payables	5,447	5,447	5,447	5,447	5,447
Provisions					
Employee provisions	24,004	24,004	24,004	24,004	24,004
Total provisions	24,004	24,004	24,004	24,004	24,004
Total liabilities	29,451	29,451	29,451	29,451	29,451
Net assets	97,859	91,875	85,346	78,514	71,801
EQUITY*					
Parent entity interest					
Contributed equity	283,717	300,857	318,181	335,675	353,288
Reserves	20,997	20,997	20,997	20,997	20,997
Accumulated deficit	(206,855)	(229,979)	(253,832)	(278,158)	(302,484)
Total parent entity interest	97,859	91,875	85,346	78,514	71,801
Total equity	97,859	91,875	85,346	78,514	71,801

Prepared on Australian Accounting Standards basis.

*'Equity' is the residual interest in assets after deduction of liabilities.

Table 3.3: Departmental statement of changes in equity — summary of movement (Budget year 2019-20)

	Retained earnings \$'000	Asset revaluation reserve \$'000	Contributed equity/ capital \$'000	Total equity \$'000
Opening balance as at 1 July 2019				
Balance carried forward from previous period	(206,855)	20,997	283,717	97,859
Adjusted opening balance	(206,855)	20,997	283,717	97,859
Comprehensive income				
Deficit for the period	(23,124)	-	-	(23,124)
Total comprehensive income	(23,124)	-	-	(23,124)
of which:				
Attributable to the Australian Government	(23,124)	-	-	(23,124)
Transactions with owners				
Contributions by owners				
Departmental Capital Budget (DCB)	-	-	17,140	17,140
Sub-total transactions with owners	-	-	17,140	17,140
Estimated closing balance as at 30 June 2020	(229,979)	20,997	300,857	91,875
Closing balance attributable to the Australian Government	(229,979)	20,997	300,857	91,875

Prepared on Australian Accounting Standards basis

*The non-controlling interest disclosure is not required if an entity does not have non-controlling interests.

Table 3.4: Budgeted departmental statement of cash flows (for the period ended 30 June)

	2018-19 Estimated actual \$'000	2019-20 Budget \$'000	2020-21 Forward estimate \$'000	2021-22 Forward estimate \$'000	2022-23 Forward estimate \$'000
OPERATING ACTIVITIES					
Cash received					
Appropriations	126,347	125,302	126,258	127,422	128,419
Sale of goods and rendering of services	15,290	15,730	15,730	15,730	15,730
Net GST received	5,886	5,455	5,503	5,513	5,590
Other	730	730	730	730	730
Total cash received	148,253	147,217	148,221	149,395	150,469
Cash used					
Employees	86,830	87,779	88,342	89,267	90,027
Suppliers	61,423	59,438	59,879	60,128	60,442
Total cash used	148,253	147,217	148,221	149,395	150,469
Net cash from/(used by) operating activities	-	-	-	-	-
INVESTING ACTIVITIES					
Cash used					
Purchase of property, plant and equipment and intangibles	19,609	17,140	17,234	17,494	17,613
Total cash used	19,609	17,140	17,234	17,494	17,613
Net cash used by investing activities	(19,609)	(17,140)	(17,234)	(17,494)	(17,613)
FINANCING ACTIVITIES					
Cash received					
Contributed equity	19,609	17,140	17,234	17,494	17,613
Total cash received	19,609	17,140	17,234	17,494	17,613
Net cash from financing activities	19,609	17,140	17,234	17,494	17,613
Net increase/(decrease) in cash held	-	-	-	-	-
Cash and cash equivalents at the beginning of the reporting period	1,097	1,097	1,097	1,097	1,097
Cash and cash equivalents at the end of the reporting period	1,097	1,097	1,097	1,097	1,097

Prepared on Australian Accounting Standards basis.

Table 3.5: Departmental capital budget statement (for the period ended 30 June)

	2018-19 Estimated actual \$'000	2019-20 Budget \$'000	2020-21 Forward estimate \$'000	2021-22 Forward estimate \$'000	2022-23 Forward estimate \$'000
NEW CAPITAL APPROPRIATIONS					
Capital budget - Bill 1 (DCB)	19,609	17,140	17,324	17,494	17,613
Total new capital appropriations	19,609	17,140	17,324	17,494	17,613
<i>Provided for:</i>					
Purchase of non-financial assets	19,609	17,140	17,324	17,494	17,613
Total items	19,609	17,140	17,324	17,494	17,613
PURCHASE OF NON-FINANCIAL ASSETS					
Funded by capital appropriations (a)	19,609	17,140	17,324	17,494	17,613
TOTAL	19,609	17,140	17,324	17,494	17,613
RECONCILIATION OF CASH USED TO ACQUIRE ASSETS TO ASSET MOVEMENT TABLE					
Total cash used to acquire assets	19,609	17,140	17,324	17,494	17,613

Prepared on Australian Accounting Standards basis.

(a) Includes purchases from current and previous years' Departmental capital budgets (DCBs).

Table 3.6: Statement of asset movements (Budget year 2019-20)

	Other property, plant and equipment \$'000	Computer software and intangibles \$'000	Total \$'000
As at 1 July 2019			
Gross book value	91,097	88,155	179,252
Accumulated depreciation/amortisation and impairment	(39,906)	(46,124)	(86,030)
Opening net book balance	51,191	42,031	93,222
Capital asset additions			
Estimated expenditure on new or replacement assets			
By purchase - appropriation equity ^(a)	8,319	8,821	17,140
Total additions	8,319	8,821	17,140
Other movements			
Depreciation/amortisation expense	(17,782)	(5,342)	(23,124)
Total other movements	(17,782)	(5,342)	(23,124)
As at 30 June 2020			
Gross book value	99,416	96,976	196,392
Accumulated depreciation/amortisation and impairment	(57,688)	(51,466)	(109,154)
Closing net book balance	41,728	45,510	87,238

Prepared on Australian Accounting Standards basis.

(a) 'Appropriation equity' refers to equity injections appropriations provided through *Appropriation (Parliamentary Departments) Bill (No. 1) 2019-20*.

Table 3.7: Schedule of budgeted income and expenses administered on behalf of Government (for the period ended 30 June)

	2018-19 Estimated actual \$'000	2019-20 Budget \$'000	2020-21 Forward estimate \$'000	2021-22 Forward estimate \$'000	2022-23 Forward estimate \$'000
EXPENSES					
Employee benefits	850	1,003	1,038	1,038	1,056
Suppliers	5,399	10,562	7,812	7,926	7,992
Depreciation and amortisation ^(a)	34,606	33,018	34,251	35,557	35,557
Total expenses administered on behalf of Government	40,855	44,583	43,101	44,521	44,605
Net cost of services	40,855	44,583	43,101	44,521	44,605
OTHER COMPREHENSIVE INCOME					
Total comprehensive loss	40,855	44,583	43,101	44,521	44,605

Prepared on Australian Accounting Standards basis.

Table 3.8: Schedule of budgeted assets and liabilities administered on behalf of Government (as at 30 June)

	2018-19 Estimated actual \$'000	2019-20 Budget \$'000	2020-21 Forward estimate \$'000	2021-22 Forward estimate \$'000	2022-23 Forward estimate \$'000
ASSETS					
Financial assets					
Taxation receivables	1,494	1,494	1,494	1,494	1,494
Total financial assets	1,494	1,494	1,494	1,494	1,494
Non-financial assets					
Land and buildings	2,363,809	2,363,764	2,364,275	2,365,240	2,366,865
Property, plant and equipment	53,327	70,094	85,307	88,928	89,189
Heritage and Cultural	113,865	114,566	115,266	115,966	116,666
Intangibles	3,032	3,023	3,017	3,015	3,013
Total non-financial assets	2,534,033	2,551,447	2,567,865	2,573,149	2,575,733
Total assets administered on behalf of Government	2,535,527	2,552,941	2,569,359	2,574,643	2,577,227
LIABILITIES					
Payables					
Suppliers	551	551	551	551	551
Other payables	1,489	1,489	1,489	1,489	1,489
Total payables	2,040	2,040	2,040	2,040	2,040
Total liabilities administered on behalf of Government	2,040	2,040	2,040	2,040	2,040
Net assets	2,533,487	2,550,901	2,567,319	2,572,603	2,575,187

Prepared on Australian Accounting Standards basis.

Table 3.9: Schedule of budgeted administered cash flows (for the period ended 30 June)

	2018-19 Estimated actual \$'000	2019-20 Budget \$'000	2020-21 Forward estimate \$'000	2021-22 Forward estimate \$'000	2022-23 Forward estimate \$'000
OPERATING ACTIVITIES					
Cash received					
Net GST received	9,711	4,053	4,130	4,206	4,290
Total cash received	9,711	4,053	4,130	4,206	4,290
Cash used					
Suppliers	15,110	14,615	11,942	12,132	12,282
Employees	850	1,003	1,038	1,038	1,056
Net GST paid	9,711	4,053	4,130	4,206	4,290
Total cash used	25,671	19,671	17,110	17,376	17,628
Net cash used by operating activities	(15,960)	(15,618)	(12,980)	(13,170)	(13,338)
INVESTING ACTIVITIES					
Cash used					
Purchase of property, plant and equipment and intangibles	92,971	50,432	50,669	40,841	38,141
Total cash used	92,971	50,432	50,669	40,841	38,141
Net cash used by investing activities	(92,971)	(50,432)	(50,669)	(40,841)	(38,141)
Net increase/(decrease) in cash held	(108,931)	(66,050)	(63,649)	(54,011)	(51,479)
Cash and cash equivalents at beginning of reporting period	-	-	-	-	-
Cash from Official Public Account for:					
- Appropriations	99,220	61,997	59,519	49,805	47,189
Total cash from Official Public Account	99,220	61,997	59,519	49,805	47,189
Cash to Official Public Account for:					
- Appropriations	9,711	4,053	4,130	4,206	4,290
Total cash to Official Public Account	9,711	4,053	4,130	4,206	4,290
Cash and cash equivalents at end of reporting period	-	-	-	-	-

Prepared on Australian Accounting Standards basis.

Table 3.10: Administered capital budget statement (for the period ended 30 June)

	2018-19 Estimated actual \$'000	2019-20 Budget \$'000	2020-21 Forward estimate \$'000	2021-22 Forward estimate \$'000	2022-23 Forward estimate \$'000
NEW CAPITAL APPROPRIATIONS					
Administered Assets and Liabilities	45,626	50,632	50,669	40,841	38,141
Total new capital appropriations	45,626	50,632	50,669	40,841	38,141
<i>Provided for:</i>					
<i>Purchase of non-financial assets</i>	45,626	50,632	50,669	40,841	38,141
Total items	45,626	50,632	50,669	40,841	38,141
PURCHASE OF NON-FINANCIAL ASSETS					
Funded by capital appropriations ^(a)	92,971	50,432	50,669	40,841	38,141
TOTAL	92,971	50,432	50,669	40,841	38,141
RECONCILIATION OF CASH USED TO ACQUIRE ASSETS TO ASSET MOVEMENT TABLE					
Total accrual purchases	45,626	50,432	50,669	40,841	38,141
Total cash used to acquire assets	45,426	50,432	50,669	40,841	38,141

Prepared on Australian Accounting Standards basis.

(a) Funded by Administered Assets and Liabilities appropriation.

Table 3.11: Statement of administered asset movements (Budget year 2019-20)

	Land	Buildings	Other property, plant and equipment	Heritage and cultural	Computer software and intangibles	Total
	\$'000	\$'000	\$'000	\$'000	\$'000	\$'000
As at 1 July 2019						
Gross book value	80,000	2,317,296	57,873	113,865	3,046	2,572,080
Accumulated depreciation/ amortisation and impairment	-	(33,487)	(4,546)	-	(14)	(38,047)
Opening net book balance	80,000	2,283,809	53,327	113,865	3,032	2,534,033
CAPITAL ASSET ADDITIONS						
Estimated expenditure on new or replacement assets:						
By purchase - appropriation equity ^(a)	-	30,897	18,834	701	-	50,432
Total additions	-	30,897	18,834	701	-	50,432
Other movements						
Depreciation/amortisation expense	-	(30,942)	(2,067)	-	(9)	(33,018)
Total other movements	-	(30,942)	(2,067)	-	(9)	(33,018)
As at 30 June 2020						
Gross book value	80,000	2,348,193	76,707	114,566	3,046	2,622,512
Accumulated depreciation/ amortisation and impairment	-	(64,429)	(6,613)	-	(23)	(71,065)
Closing net book balance	80,000	2,283,764	70,094	114,566	3,023	2,551,447

Prepared on Australian Accounting Standards basis.

(a) 'Appropriation equity' refers to Administered Assets and Liabilities provided through *Appropriation (Parliamentary Departments) Bill (No. 1) 2019-20*.

GLOSSARY

Term	Meaning
DCB	Departmental Capital Budget
DPS	Department of Parliamentary Services Portfolio Budget
PBS	Statement
GST	Goods and Services Tax
ICT	Information and Communications Technology Information
IT	Technology
OPA	Official Public Account
PAES	Portfolio Additional Estimates Statements
PGPA Act	<i>Public Governance, Performance and Accountability Act 2013</i>
MYEFO	Mid-Year Economic and Fiscal Outlook