

PORTFOLIO ADDITIONAL ESTIMATES STATEMENTS 2013-14

DEPARTMENT OF PARLIAMENTARY SERVICES

EXPLANATIONS OF ADDITIONAL ESTIMATES 2013-14



© Commonwealth of Australia 2014

ISBN 978-0-9806554-2-1

This publication is available for your use under a [Creative Commons BY Attribution 3.0 Australia](http://creativecommons.org/licenses/by/3.0/au/legalcode) licence, with the exception of the Commonwealth Coat of Arms, the Department of Parliamentary Services logo, photographs, images, signatures and where otherwise stated. The full licence terms are available from <http://creativecommons.org/licenses/by/3.0/au/legalcode>.



Use of Department of Parliamentary Services (DPS) material under a [Creative Commons BY Attribution 3.0 Australia](http://creativecommons.org/licenses/by/3.0/au/legalcode) licence requires you to attribute the work (but not in any way that suggests that DPS endorses you or your use of the work).

Department of Parliamentary Services material used 'as supplied'

Provided you have not modified or transformed DPS material in any way including, for example, by changing the text; calculating percentage changes; graphing or charting data; or deriving new statistics from published DPS statistics – then DPS prefers the following attribution:

Source: Department of Parliamentary Services

Derivative material

If you have modified or transformed DPS material, or derived new material from those of DPS in any way, then DPS prefers the following attribution:

Based on Department of Parliamentary Services data

Use of the Coat of Arms

The terms under which the Coat of Arms can be used are set out on the It's an Honour website (see www.itsanhonour.gov.au)

Other Uses

Inquiries regarding this licence and any other use of this document are welcome at:

Ms Mary-Ellen Sweeney
A/g Chief Finance Officer
Department of Parliamentary Services
(02) 6277 8818



PARLIAMENT OF AUSTRALIA

DEPARTMENT OF PARLIAMENTARY SERVICES

Senator the Hon John Hogg
President of the Senate
Parliament House
CANBERRA ACT 2600

The Hon Bronwyn Bishop MP
Speaker of the House of Representatives
Parliament House
CANBERRA ACT 2600

Dear Mr President and Madam Speaker

Portfolio Additional Estimates Statements 2013–14

I hereby submit Portfolio Additional Estimates Statements in support of the 2013–14 Additional Estimates for the Department of Parliamentary Services.

These statements have been developed, and are submitted to the Parliament, as a statement on the funding requirements being sought for the Department.

I present these statements to provide accountability to the Parliament and, through it, the public.

Yours sincerely

Carol Mills
Secretary

3.2.14

Abbreviations and conventions

The following notations may be used:

NEC/nec	not elsewhere classified
-	nil
..	not zero, but rounded to zero
na	not applicable (unless otherwise specified)
nfp	not for publication
\$m	\$ million

Figures in tables and in the text may be rounded. Figures in text are generally rounded to one decimal place, whereas figures in tables are generally rounded to the nearest thousand. Discrepancies in tables between totals and sums of components are due to rounding.

ENQUIRIES

Should you have any enquiries regarding this publication please contact Ms Mary-Ellen Sweeney, A/g Chief Finance Officer in the Department of Parliamentary Services on (02) 6277 8818.

A copy of this document can be located on the Australian Government Budget website at: <http://www.budget.gov.au>.

**USER GUIDE
TO THE
PORTFOLIO ADDITIONAL
ESTIMATES STATEMENTS**

USER GUIDE

The purpose of the Portfolio Additional Estimates Statements (PAES), like that of the Portfolio Budget Statements (PB Statements), is to inform Senators and Members of Parliament of the proposed allocation of resources to the Department. The focus of the PAES differs from the PB Statements in one important aspect. While the PAES include an Agency Resource Statement to inform Parliament of the revised estimate of the total resources available to an agency, the focus of the PAES is on explaining the changes in resourcing by outcome(s) since the Budget. As such, the PAES provides information on new measures and their impact on the financial and/or non-financial planned performance of programs supporting those outcomes.

The PAES facilitate understanding of the proposed appropriations in Appropriation (Parliamentary Departments) Bill (No. 2) 2013-14. In this sense the PAES is declared by the Additional Estimates Appropriation Bills to be a 'relevant document' to the interpretation of the Bills according to section 15AB of the *Acts Interpretation Act 1901*.

Whereas the Mid-Year Economic and Fiscal Outlook (MYEFO) 2013-14 is a mid-year budget report which provides updated information to allow the assessment of the Government's fiscal performance against its fiscal strategy, the PAES update the most recent budget appropriations for the Department.

Structure of the Portfolio Additional Estimates Statements

The PAES are presented in three parts with subsections.

User Guide

Provides a brief introduction explaining the purpose of the PAES.

Departmental Overview

Provides an overview of the Department, including a chart that outlines the outcomes for the Department.

Agency Additional Estimates Statements

Section 1: Agency Overview and Resources	This section details the total resources available to the Department, the impact of any measures since Budget, and impact on Appropriation (Parliamentary Departments) Bill (No. 2).
---	--

Section 2: Revisions to Outcomes and Planned Performance	This section details changes to outcomes and/or changes to the planned performance of programs.
---	---

Section 3: Explanatory Tables and Budgeted Financial Statements	This section contains updated explanatory tables on special account flows and staffing levels and revisions to the budgeted financial statements.
--	---

Glossary	Explains key terms relevant to the Department.
-----------------	--

CONTENTS

Departmental Overview 3

Department of Parliamentary Services 9

Glossary 33

DEPARTMENTAL OVERVIEW

DEPARTMENTAL OVERVIEW

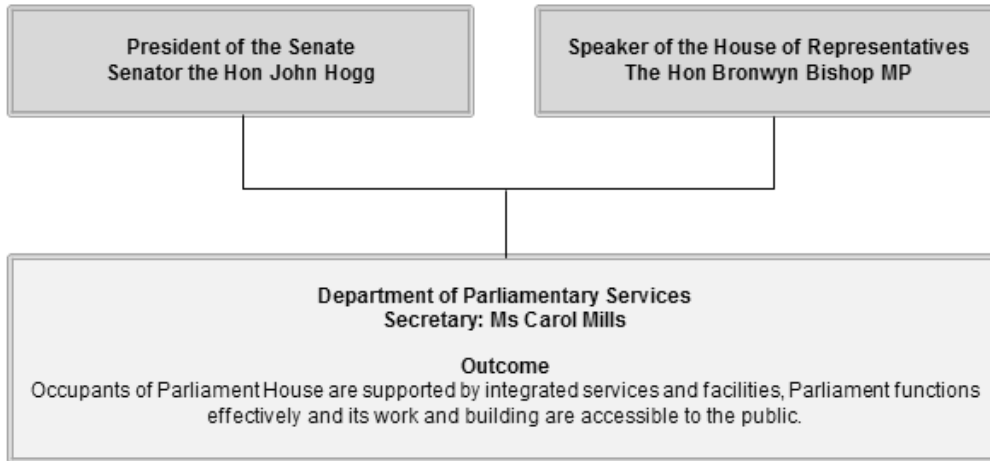
The Department of Parliamentary Services (DPS) supports the work of the Australian Parliament, maintains Parliament House as a symbol of Australian democracy, and makes the building, and the important activity that takes place within it, accessible and engaging. DPS reports to the Presiding Officers of the Parliament (the President of the Senate and the Speaker of the House of Representatives).

DPS services comprise:

- library and research;
- parliamentary broadcasting and recording;
- ICT and building security;
- a full range of information and communication technology services;
- extensive visitor services, including tours, retail and information at Parliament House and online;
- asset management, including building and landscape planning, upgrading and maintenance;
- health and recreation and hospitality services;
- Parliament House Art Collection (PHAC) and Historic Memorials Collection (HMC) management; and
- corporate services to DPS.

Department Overview

Figure 1: Department of Parliamentary Services reporting structure and outcome



Department Resources

Table 1 shows the additional resources provided to the Department in the 2013-14 budget year.

Table 1: Department Resources 2013-14

	Appropriation (Parliamentary Departments) Bill (No. 2) \$m	Receipts \$m	Total \$m
DPS			
Departmental appropriations	5.4	-	5.4
Total:			5.4
Additional resources available within DPS:			5.4

AGENCY ADDITIONAL ESTIMATES STATEMENTS

DEPARTMENT OF PARLIAMENTARY SERVICES

Section 1: Agency Overview and Resources	9
1.1 Strategic Direction	9
1.2 Agency Resource Statement	10-11
1.3 Agency Measures Table	12
1.4 Additional Estimates and Variations	13
1.5 Breakdown of Additional Estimates by Appropriation Bill	15
Section 2: Revisions to Agency Outcomes and Planned Performance	16
2.1 Resources and Performance Information	16
Section 3: Explanatory Tables and Budgeted Financial Statements	19
3.1 Explanatory Tables	19
3.2 Budgeted Financial Statements	20

DEPARTMENT OF PARLIAMENTARY SERVICES

Section 1: Agency Overview and Resources

1.1 STRATEGIC DIRECTION STATEMENT

The Department of Parliamentary services provides essential services to support the work of the Parliament, maintain Parliament House as a symbol of democracy, and ensure that the important activity that takes place within it is accessible and engaging for all.

The Department is building on its foundation of service excellence by developing innovative and adaptive approaches that will shape the services it delivers to the occupants of and visitors to Parliament House.

Areas of priority for the Department are to:

- Strategically plan to maintain and enhance Parliament House;
- Provide information and communication technologies that support the Parliament and connect with the wider community;
- Enable physical and virtual access to the Parliament to engage with and meet the needs of a diverse range of occupants, visitors and the community;
- Support the work of Parliament to ensure its effective function and duties;
- Ensure the Parliament's assets are cared for and respected and its heritage value is maintained for future generations.

1.2 AGENCY RESOURCE STATEMENT

The Agency Resource Statement details the resourcing for DPS at Additional Estimates. Table 1.1 outlines the total resourcing available from all sources for the 2013-14 Budget year, including variations through Appropriation (Parliamentary Departments) Bill (No. 2), Special Appropriations and Special Accounts.

Table 1.1: Department of Parliamentary Services Resource Statement — Additional Estimates for 2013-14 as at Additional Estimates February 2014

	Estimate as at Budget	+	Proposed Additional Estimate	=	Total estimate at Additional Estimates	Total available appropriation
	2013-14		2013-14		2013-14	2012-13
	\$'000		\$'000		\$'000	\$'000
Ordinary annual services¹						
Departmental appropriation						
Prior year departmental appropriation ²	16,911		4,840		21,751	-
Departmental appropriation ³ s31 relevant agency receipts ⁴	111,513		5,359		116,872	110,822
	6,858		-		6,858	7,032
Total	135,282		10,199		145,481	117,854
Administered non-operating						
Administered assets and liabilities	20,437		-		20,437	12,896
Total	20,437		-		20,437	12,896
Total net resourcing for DPS	155,719		10,199		165,918	130,750

¹ Appropriation (Parliamentary Departments) Act (No. 1) 2013-14.

² Estimated adjusted balance carried from previous year for annual appropriations.

³ Includes an amount of \$9.789m in 2013-14 for the Departmental Capital Budget (refer to table 3.2.5 for further details). For accounting purposes this amount has been designated as 'contributions by owners'.

⁴ s31 relevant agency receipts – estimate.

Reader note: All figures are GST exclusive.

Third Party Payments from and on behalf of other agencies

	Estimate at Budget	Estimate at Additional Estimates
	2013-14	2013-14
	\$'000	\$'000
Payments made on behalf of other agencies		
Department of Finance		
<i>Parliamentary Entitlements Act 1990</i>	13,877	17,288

1.3 AGENCY MEASURES TABLE

Table 1.2 summarises new Government measures taken since the 2013-14 Budget. The table is split into revenue, expense and capital measures, with the affected program identified.

Table 1.2: Agency 2013-14 Measures since Budget

	Program	2013-14 \$'000	2014-15 \$'000	2015-16 \$'000	2016-17 \$'000
Expense measures					
Microsoft volume sourcing arrangements					
	Departmental expenses	1	(141)	(141)	(141)
	Total		(141)	(141)	(141)
Additional operating funding					
	Departmental expenses	1	5,500	-	-
	Total		5,500	-	-
Total expense measures					
	Departmental		5,359	(141)	(141)
	Total		5,359	(141)	(141)

Prepared on a Government Financial Statistics (fiscal) basis.

1.4 ADDITIONAL ESTIMATES AND VARIATIONS

The following tables detail the changes to the resourcing for DPS at Additional Estimates, by outcome. Table 1.3 details the Additional Estimates and variations resulting from new measures since the 2013-14 Budget in Appropriation (Parliamentary Departments) Bill (No. 2). Table 1.4 details Additional Estimates or variations through other factors, such parameter adjustments.

Table 1.3: Additional Estimates and Variations to Outcomes from Measures since 2013-14 Budget

	Program impacted	2013-14 \$'000	2014-15 \$'000	2015-16 \$'000	2016-17 \$'000
Outcome 1					
Increase in estimates (departmental)					
Additional operating funding	1	5,500	-	-	-
Decrease in estimates (departmental)					
Microsoft volume sourcing arrangements	1	(141)	(141)	(141)	-
Net impact on estimates					
for Outcome 1 (departmental)		5,359	(141)	(141)	-

Table 1.4: Additional Estimates and Variations to Outcomes from Other Variations

	Program impacted	2013-14 \$'000	2014-15 \$'000	2015-16 \$'000	2016-17 \$'000
Outcome 1					
Decrease in estimates (departmental)					
Efficiency dividend	1	-	(1,025)	(2,313)	(3,620)
Parameter adjustments	1	-	(199)	(495)	(497)
Net impact on estimates for Outcome 1 (departmental)					
		-	(1,224)	(2,808)	(4,117)

1.5 BREAKDOWN OF ADDITIONAL ESTIMATES BY APPROPRIATION BILL

The following tables detail the Additional Estimates sought for DPS through Appropriation (Parliamentary Departments) Bill (No. 2).

Table 1.5: Appropriation (Parliamentary Departments) Bill (No. 2) 2013-14

	2012-13 Available \$'000	2013-14 Budget \$'000	2013-14 Revised \$'000	Additional Estimates \$'000	Reduced Estimates \$'000
DEPARTMENTAL PROGRAMS					
Outcome 1					
Occupants of Parliament House are supported by integrated services and facilities, Parliament functions effectively and its work and building are accessible to the public	110,822	111,513	116,872	5,359	-
Total departmental	110,822	111,513	116,872	5,359	-

Section 2: Revisions to Agency Resources and Planned Performance

2.1 RESOURCES AND PERFORMANCE INFORMATION

No changes have been made to the Outcome Statement and no movement of programs or sub-programs has occurred.

OUTCOME 1

Outcome 1 Strategy

There has been no change to the Outcome Statement or programs.

Table 2.1 Budgeted Expenses and Resources for Outcome 1

Outcome 1: Occupants of Parliament House are supported by integrated services and facilities, Parliament functions effectively and its work and building are accessible to the public	2012-13 Actual expenses \$'000	2013-14 Revised Estimated expenses \$'000
Program 1: Parliamentary Services		
Departmental expenses		
Departmental appropriation ¹	112,108	113,976
Expenses not requiring appropriation in the Budget year ²	24,794	20,615
Total for Program 1	136,902	134,591
Program 2: Parliament House Works Program		
Administered expenses		
Expenses not requiring appropriation in the Budget year ²	27,097	27,059
Total for Program 1.2	27,097	27,059
Outcome 1 Totals by appropriation type		
Departmental expenses		
Departmental appropriation ¹	112,108	113,976
Expenses not requiring appropriation in the Budget year ²	51,891	47,674
Total expenses for Outcome 1	163,999	161,650
	2012-13	2013-14
Average Staffing Level (number)	695	705

¹ Departmental Appropriation combines "ordinary annual services Appropriation (Parliamentary Departments) Act (No. 1)" and "revenue from independent sources (s31)".

² Expenses not requiring appropriation in the budget year is predominantly made up of depreciation and amortisation expense, write-down and impairment of assets, losses from asset sales and audit fees.

Program 1 Objective

Program 1 objectives have not changed.

Program 1 Expenses

	2012-13 Actual \$'000	2013-14 Revised budget \$'000	2014-15 Forward year 1 \$'000	2015-16 Forward year 2 \$'000	2016-17 Forward year 3 \$'000
Annual departmental expenses:					
Other Departmental - DPS	112,108	113,976	107,314	106,860	107,002
Expenses not requiring appropriation in the Budget year ¹	24,794	20,615	17,618	16,985	14,290
Total program expenses	136,902	134,591	124,932	123,845	121,292

¹ Expenses not requiring appropriation in the budget year is predominantly made up of depreciation and amortisation expense, write-down and impairment of assets, losses from asset sales and audit fees.

Program 2 Objective

Program 2 objectives have not changed.

Program 2 Expenses

	2012-13 Actual \$'000	2013-14 Revised budget \$'000	2014-15 Forward year 1 \$'000	2015-16 Forward year 2 \$'000	2016-17 Forward year 3 \$'000
Expenses not requiring appropriation in the Budget year ¹	27,097	27,059	27,181	27,317	27,327
Total program expenses	27,097	27,059	27,181	27,317	27,327

¹ Expenses not requiring appropriation in the budget year is made up of depreciation expense.

Section 3: Explanatory Tables and Budgeted Financial Statements

3.1 Explanatory Tables

Estimates of Special Account Flows

Special Accounts provide a means to set aside and record amounts used for specified purposes. DPS does not have any Special Accounts.

3.2 BUDGETED FINANCIAL STATEMENTS

3.2.1 Analysis of Budgeted Financial Statements

The increase in estimated income for 2013-14 since publication of the PB Statements arises from the additional operating funding provided in Appropriation (Parliamentary Departments) Bill (No. 2), with a commensurate increase in estimated expenses.

Changes in estimates for 2012-13 reflect the difference between estimated actual results published in the PB Statements and actual results for 2012-13 as published in the annual financial statements for DPS, for the period ending 30 June 2013.

Table 3.2.1: Budgeted Departmental Comprehensive Income Statement (Showing Net Cost of Services)

	Actual	Revised budget	Forward estimate	Forward estimate	Forward estimate
	2012-13	2013-14	2014-15	2015-16	2016-17
	\$'000	\$'000	\$'000	\$'000	\$'000
EXPENSES					
Employee benefits	67,809	72,007	70,543	72,541	75,431
Suppliers	44,299	42,149	36,951	34,499	31,751
Depreciation and amortisation	24,593	20,435	17,438	16,805	14,110
Write-down and impairment of assets	2	-	-	-	-
Losses from asset sales	199	-	-	-	-
Total expenses	136,902	134,591	124,932	123,845	121,292
LESS:					
OWN-SOURCE INCOME					
Own-source revenue					
Sale of goods and rendering of services	4,995	5,341	5,448	5,557	5,668
Rental income	1,587	1,517	1,547	1,578	1,610
Other revenue	381	120	120	120	120
Total own-source revenue	6,963	6,978	7,115	7,255	7,398
Gains					
Foreign exchange	1	-	-	-	-
Other gains	-	180	180	180	180
Total gains	1	180	180	180	180
Total own-source income	6,964	7,158	7,295	7,435	7,578
Net cost of services	129,938	127,433	117,637	116,410	113,714
Revenue from Government	101,160	106,998	100,199	99,605	99,604
Deficit after income tax	(28,778)	(20,435)	(17,438)	(16,805)	(14,110)
OTHER COMPREHENSIVE INCOME					
Items not subject to subsequent reclassification to profit or loss					
Changes in asset revaluation surplus	3,253	-	-	-	-
Total other comprehensive income after income tax	3,253	-	-	-	-
Total comprehensive loss	(25,525)	(20,435)	(17,438)	(16,805)	(14,110)
Note: Impact of Net Cash Appropriation Arrangements					
	2012-13	2013-14	2014-15	2015-16	2016-17
	\$'000	\$'000	\$'000	\$'000	\$'000
Total comprehensive loss excluding depreciation/amortisation expenses previously funded through revenue appropriations.	(932)	-	-	-	-
less depreciation/amortisation expenses previously funded through revenue appropriations ¹	24,593	20,435	17,438	16,805	14,110
Total comprehensive loss - as per the Statement of Comprehensive Income	(25,525)	(20,435)	(17,438)	(16,805)	(14,110)

Table 3.2.1: Budgeted Departmental Comprehensive Income Statement (Showing Net Cost of Services) (continued)

¹ From 2010-11, the Government introduced net cash appropriation arrangements where Appropriation (Parliamentary Departments) Act (No. 1) or Bill (No. 2) revenue appropriations for the depreciation/ amortisation expenses of FMA Act agencies were replaced with a separate capital budget (the Departmental Capital Budget, or DCB) provided through Appropriation (Parliamentary Departments) Act (No. 1) or Bill (No. 2) equity appropriations. For information regarding DCBs, please refer to Table 3.2.5 Departmental Capital Budget Statement.

Prepared on Australian Accounting Standards basis.

Table 3.2.2: Budgeted Departmental Balance Sheet (as at 30 June)

	Actual 2012-13 \$'000	Revised budget 2013-14 \$'000	Forward estimate 2014-15 \$'000	Forward estimate 2015-16 \$'000	Forward estimate 2016-17 \$'000
ASSETS					
Financial assets					
Cash and cash equivalents	223	308	308	308	308
Trade and other receivables	23,516	24,423	25,522	25,522	25,522
Total financial assets	23,739	24,731	25,830	25,830	25,830
Non-financial assets					
Property, plant and equipment	78,114	74,989	83,328	92,124	100,127
Intangibles	25,255	17,734	13,044	8,426	7,400
Inventories	173	173	173	173	173
Other non-financial assets	3,849	3,849	3,849	3,849	3,849
Total non-financial assets	107,391	96,745	100,394	104,572	111,549
Total assets	131,130	121,476	126,224	130,402	137,379
LIABILITIES					
Payables					
Suppliers	6,807	3,980	3,980	3,980	3,980
Other payables	2,129	2,830	2,830	2,830	2,830
Total payables	8,936	6,810	6,810	6,810	6,810
Provisions					
Employee provisions	20,047	23,045	24,145	24,145	24,145
Total provisions	20,047	23,045	24,145	24,145	24,145
Total liabilities	28,983	29,855	30,955	30,955	30,955
Net assets	102,147	91,621	95,269	99,447	106,424
EQUITY					
Contributed equity	164,004	173,792	194,878	215,861	236,948
Reserves	18,607	18,607	18,607	18,607	18,607
Accumulated deficit	(80,464)	(100,778)	(118,216)	(135,021)	(149,131)
Total Equity	102,147	91,621	95,269	99,447	106,424

Prepared on Australian Accounting Standards basis.

Table 3.2.3: Departmental Statement of Changes in Equity — Summary of Movement (Budget Year 2013-14)

	Retained earnings \$'000	Asset revaluation reserve \$'000	Contributed equity/ capital \$'000	Total equity \$'000
Opening balance as at 1 July 2013				
Balance carried forward from previous period	(80,464)	18,607	164,004	102,147
Adjustments	121	-	(1)	120
Adjusted opening balance	(80,343)	18,607	164,003	102,267
Comprehensive income				
Deficit for the period	(20,435)	-	-	(20,435)
Total comprehensive income	(20,435)	-	-	(20,435)
of which:				
Attributable to the Australian Government	(20,435)	-	-	(20,435)
Transactions with owners				
Contributions by owners				
Departmental Capital Budget (DCB)	-	-	9,789	9,789
Sub-total transactions with owners	-	-	9,789	9,789
Estimated closing balance as at 30 June 2014	(100,778)	18,607	173,792	91,621

Prepared on Australian Accounting Standards basis.

Table 3.2.4: Budgeted Departmental Statement of Cash Flows (as at 30 June)

	Actual 2012-13 \$'000	Revised budget 2013-14 \$'000	Forward estimate 2014-15 \$'000	Forward estimate 2015-16 \$'000	Forward estimate 2016-17 \$'000
OPERATING ACTIVITIES					
Cash received					
Appropriations	101,870	106,091	99,099	97,599	99,604
Sale of goods and rendering of services	7,190	6,858	6,995	7,135	7,940
Net GST received	5,016	5,294	6,775	7,085	2,695
Other	219	120	120	120	120
Total cash received	114,295	118,363	112,989	111,939	110,359
Cash used					
Employees	69,202	71,015	69,443	72,541	75,431
Suppliers	48,446	47,263	43,546	39,398	34,928
Total cash used	117,648	118,278	112,989	111,939	110,359
Net cash (used by) received from operating activities	(3,353)	85	-	-	-
INVESTING ACTIVITIES					
Cash received					
Proceeds from sales of property, plant and equipment	107	-	-	-	-
Total cash received	107	-	-	-	-
Cash used					
Purchase of property, plant, equipment and intangibles	6,584	9,789	21,086	20,983	21,087
Total cash used	6,584	9,789	21,086	20,983	21,087
Net cash used by investing activities	(6,477)	(9,789)	(21,086)	(20,983)	(21,087)
FINANCING ACTIVITIES					
Cash received					
Contributed equity	9,747	9,789	21,086	20,983	21,087
Total cash received	9,747	9,789	21,086	20,983	21,087
Net cash received from financing activities	9,747	9,789	21,086	20,983	21,087
Net increase (decrease) in cash held	(83)	85	-	-	-
Cash and cash equivalents at the beginning of the reporting period	306	223	308	308	308
Cash and cash equivalents at the end of the reporting period	223	308	308	308	308

Prepared on Australian Accounting Standards basis.

Table 3.2.5: Capital Budget Statement — Departmental

	Actual	Revised budget	Forward estimate	Forward estimate	Forward estimate
	2012-13	2013-14	2014-15	2015-16	2016-17
	\$'000	\$'000	\$'000	\$'000	\$'000
NEW CAPITAL APPROPRIATIONS					
Capital budget - Act No. 1 (DCB)	9,747	9,789	21,086	20,983	21,087
Total new capital appropriations	9,747	9,789	21,086	20,983	21,087
Provided for:					
<i>Purchase of non-financial assets</i>	9,747	9,789	21,086	20,983	21,087
Total Items	9,747	9,789	21,086	20,983	21,087
PURCHASE OF NON-FINANCIAL ASSETS					
Funded by capital appropriation - DCB ¹	6,584	9,789	21,086	20,983	21,087
TOTAL AMOUNT SPENT	6,584	9,789	21,086	20,983	21,087
RECONCILIATION OF CASH USED TO ACQUIRE ASSETS TO ASSET MOVEMENT TABLE					
Total purchases	6,568	9,789	21,086	20,983	21,087
less additions by creditors / borrowings	16	-	-	-	-
Total cash used to acquire assets	6,584	9,789	21,086	20,983	21,087

¹ Does not include annual finance lease costs. Includes purchase from current and previous years' Departmental Capital Budgets (DCBs).

Consistent with information contained in the Statement of Asset Movements and the Budgeted Statement of Cash Flows.

Table 3.2.6: Statement of Asset Movements (2013-14)

	Other property, plant and equipment \$'000	Computer software and intangibles \$'000	Total \$'000
As at 1 July 2013			
Gross book value	269,570	62,599	332,169
Accumulated depreciation/amortisation and impairment	(191,456)	(37,344)	(228,800)
Opening net book balance	78,114	25,255	103,369
CAPITAL ASSET ADDITIONS			
Estimated expenditure on new or replacement assets			
By purchase - appropriation ordinary annual services ¹	9,601	188	9,789
Total additions	9,601	188	9,789
Other movements			
Depreciation/amortisation expense	(12,726)	(7,709)	(20,435)
Total other movements	(12,726)	(7,709)	(20,435)
As at 30 June 2014			
Gross book value	279,171	62,787	341,958
Accumulated depreciation/amortisation and impairment	(204,182)	(45,053)	(249,235)
Closing net book balance	74,989	17,734	92,723

¹ "Appropriation ordinary annual services" refers to funding provided through Appropriation (Parliamentary Departments) Act (No. 1) and Bill (No. 2) 2013-14 for depreciation/amortisation expenses, DCBs or other operational expenses.

Prepared on Australian Accounting Standards basis.

Schedule of Administered Activity

Table 3.2.7: Schedule of Budgeted Income and Expenses Administered on Behalf of Government (for the period ended 30 June)

	Actual 2012-13 \$'000	Revised budget 2013-14 \$'000	Forward estimate 2014-15 \$'000	Forward estimate 2015-16 \$'000	Forward estimate 2016-17 \$'000
EXPENSES ADMINISTERED ON BEHALF OF GOVERNMENT					
Depreciation and amortisation	27,093	27,059	27,191	27,327	27,327
Other expenses	4	-	-	-	-
Total expenses administered on behalf of Government	27,097	27,059	27,191	27,327	27,327
LESS:					
OWN-SOURCE INCOME					
Own-source revenue					
Non-taxation revenue					
Other revenue	9	5	10	10	-
Total non-taxation revenue	9	5	10	10	-
Total own-source revenues administered on behalf of Government	9	5	10	10	-
Gains					
Other gains	68	-	-	-	-
Total gains administered on behalf of Government	68	-	-	-	-
Total own-sourced income administered on behalf of Government	77	5	10	10	-
Net cost of services	27,020	27,054	27,181	27,317	27,327
Deficit after income tax	(27,020)	(27,054)	(27,181)	(27,317)	(27,327)
OTHER COMPREHENSIVE INCOME					
Items not subject to subsequent reclassification to profit or loss					
Changes in asset revaluation surplus	86,425	-	-	-	-
Total other comprehensive income	86,425	-	-	-	-
Total comprehensive income (loss)	59,405	(27,054)	(27,181)	(27,317)	(27,327)

Prepared on Australian Accounting Standards basis.

Table 3.2.8: Schedule of Budgeted Assets and Liabilities Administered on Behalf of Government (as at 30 June)

	Actual 2012-13 \$'000	Revised budget 2013-14 \$'000	Forward estimate 2014-15 \$'000	Forward estimate 2015-16 \$'000	Forward estimate 2016-17 \$'000
ASSETS ADMINISTERED ON BEHALF OF GOVERNMENT					
Financial assets					
Trade and other receivables	69	745	749	752	752
Total financial assets	69	745	749	752	752
Non-financial assets					
Land and buildings	2,136,016	2,129,581	2,116,350	2,103,296	2,090,634
Property, plant and equipment	90,048	90,649	90,460	90,227	89,992
Total non-financial assets	2,226,064	2,220,230	2,206,810	2,193,523	2,180,626
Total assets administered on behalf of Government	2,226,133	2,220,975	2,207,559	2,194,275	2,181,378
LIABILITIES ADMINISTERED ON BEHALF OF GOVERNMENT					
Payables					
Suppliers	669	537	541	544	544
Other payables	24	163	163	163	163
Total payables	693	700	704	707	707
Total liabilities administered on behalf of Government	693	700	704	707	707
Net assets	2,225,440	2,220,275	2,206,855	2,193,568	2,180,671

Prepared on Australian Accounting Standards basis.

Table 3.2.9: Schedule of Budgeted Administered Cash Flows (for the period ended 30 June)

	Actual 2012-13 \$'000	Revised budget 2013-14 \$'000	Forward estimate 2014-15 \$'000	Forward estimate 2015-16 \$'000	Forward estimate 2016-17 \$'000
OPERATING ACTIVITIES					
Cash received					
Net GST received	1,592	1,353	1,388	1,420	1,439
Other	8	-	-	-	-
Total cash received	1,600	1,353	1,388	1,420	1,439
Cash used					
Suppliers	980	1,353	1,388	1,420	1,439
Total cash used	980	1,353	1,388	1,420	1,439
Net cash received from operating activities	620	-	-	-	-
INVESTING ACTIVITIES					
Cash received					
Proceeds from sale of property, plant and equipment	2	5	10	10	-
Total cash received	2	5	10	10	-
Cash used					
Purchase of property, plant, equipment and intangibles	11,635	21,225	13,771	14,040	14,430
Total cash used	11,635	21,225	13,771	14,040	14,430
Net cash used by investing activities	(11,633)	(21,220)	(13,761)	(14,030)	(14,430)
Net decrease in cash held	(11,013)	(21,220)	(13,761)	(14,030)	(14,430)
Cash and cash equivalents at beginning of reporting period	-	-	-	-	-
Cash from Official Public Account for:					
- Appropriations	12,615	22,578	15,159	15,460	15,869
	12,615	22,578	15,159	15,460	15,869
Cash to Official Public Account for:					
- Appropriations	(1,592)	(1,353)	(1,388)	(1,420)	(1,439)
- Administered receipts	(10)	(5)	(10)	(10)	-
	(1,602)	(1,358)	(1,398)	(1,430)	(1,439)
Cash and cash equivalents at end of reporting period	-	-	-	-	-

Prepared on Australian Accounting Standards basis.

Table 3.2.10: Schedule of Administered Capital Budget

	Actual 2012-13 \$'000	Revised budget 2013-14 \$'000	Forward estimate 2014-15 \$'000	Forward estimate 2015-16 \$'000	Forward estimate 2016-17 \$'000
NEW CAPITAL APPROPRIATIONS					
Administered Assets and Liabilities - Act 1	12,896	20,437	13,771	14,040	14,430
Total new capital appropriations	12,896	20,437	13,771	14,040	14,430
<i>Provided for:</i>					
<i>Purchase of non-financial assets</i>	12,896	20,437	13,771	14,040	14,430
Total Items	12,896	20,437	13,771	14,040	14,430
PURCHASE OF NON-FINANCIAL ASSETS					
Funded by capital appropriations ¹	11,635	21,225	13,771	14,040	14,430
TOTAL AMOUNT SPENT	11,635	21,225	13,771	14,040	14,430
RECONCILIATION OF CASH USED TO ACQUIRE ASSETS TO ASSET MOVEMENT TABLE					
Total accrual purchases	11,894	21,225	13,771	14,040	14,430
less additions by creditors / borrowings	(191)	-	-	-	-
less Gifted assets	(68)	-	-	-	-
Total cash used to acquire assets	11,635	21,225	13,771	14,040	14,430

¹ Funded from Administered Assets and Liabilities Appropriation (Parliamentary Departments) Act (No. 1), current and prior years, and Bill (No. 2).

Consistent with information contained in the Statement of Asset Movements and the Budgeted Statement of Cash Flows.

Table 3.2.11: Statement of Administered Asset Movements (2013-14)

	Land \$'000	Buildings \$'000	Other property, plant and equipment \$'000	Heritage and cultural assets \$'000	Total \$'000
As at 1 July 2013					
Gross book value	50,000	2,751,410	19,516	84,062	2,904,988
Accumulated depreciation/amortisation and impairment	-	(665,394)	(13,530)	-	(678,924)
Opening net book balance	50,000	2,086,016	5,986	84,062	2,226,064
CAPITAL ASSET ADDITIONS					
Estimated expenditure on new or replacement assets					
By purchase - appropriation equity ¹	-	19,701	874	650	21,225
Total additions	-	19,701	874	650	21,225
Other movements					
Depreciation/amortisation expense	-	(26,136)	(923)	-	(27,059)
Total other movements	-	(26,136)	(923)	-	(27,059)
As at 30 June 2014					
Gross book value	50,000	2,771,111	20,390	84,712	2,926,213
Accumulated depreciation/amortisation and impairment	-	(691,530)	(14,453)	-	(705,983)
Closing net book balance	50,000	2,079,581	5,937	84,712	2,220,230

¹ "Appropriation equity" refers to Administered Assets and Liabilities appropriations provided through Appropriation (Parliamentary Departments) Act (No. 1) and Bill (No. 2) 2013-14.

Prepared on Australian Accounting Standards basis.

GLOSSARY

DCB	Departmental Capital Budget
DPS	Department of Parliamentary Services
FMA Act	<i>Financial Management and Accountability Act 1997</i>
GST	Goods and Services Tax
HMC	Historic Memorials Collection
ICT	Information and Communication Technology
MYEFO	Mid-Year Economic and Fiscal Outlook
PAES	Portfolio Additional Estimates Statements
PB Statements	Portfolio Budget Statements
PHAC	Parliament House Art Collection