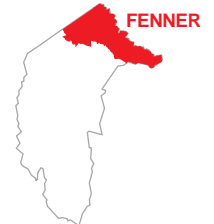
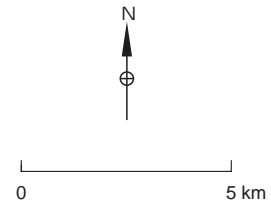




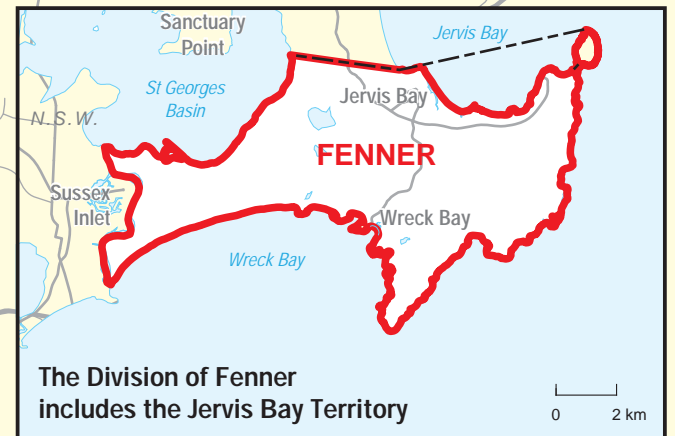
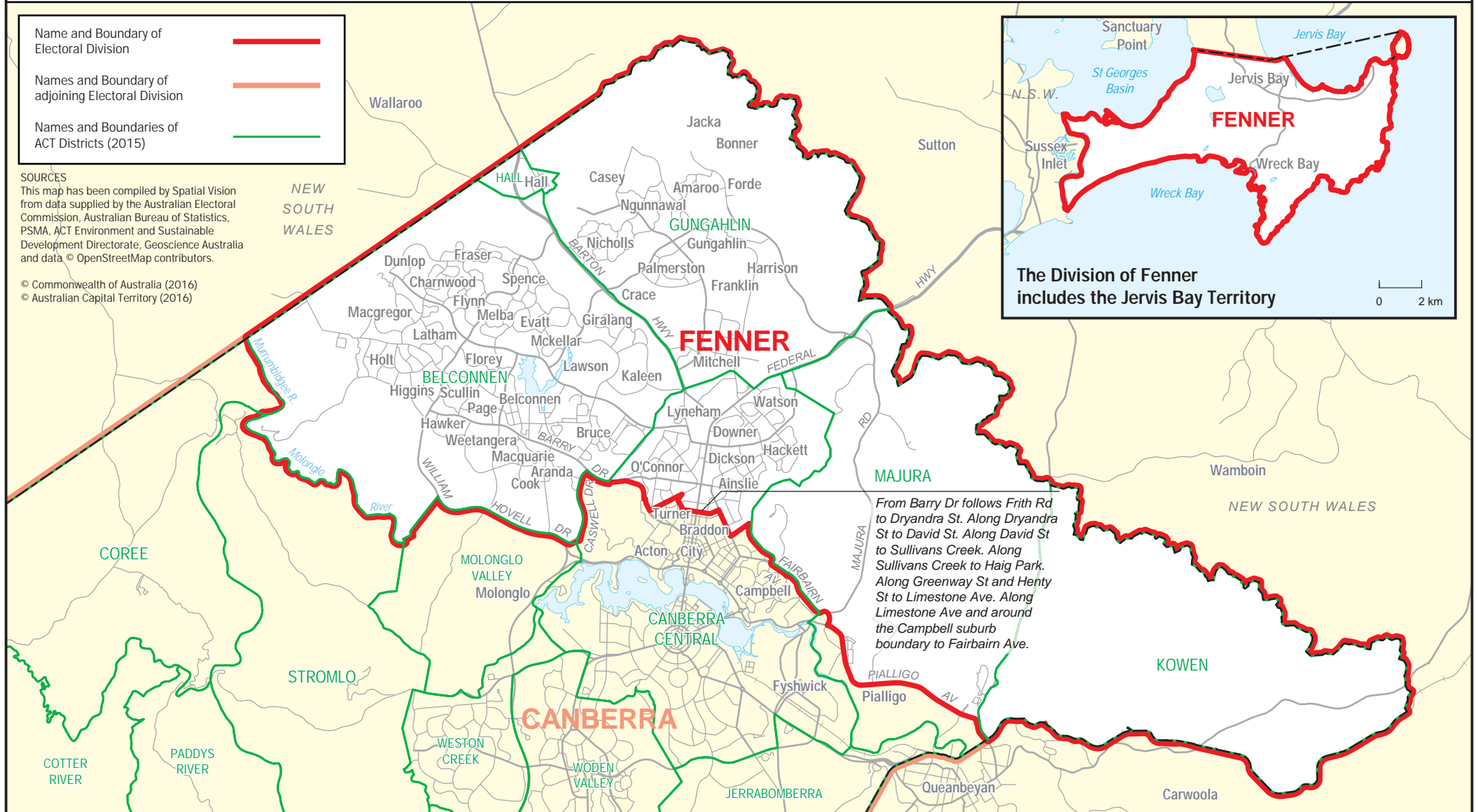
# January 2016 MAP OF FEDERAL ELECTORAL DIVISION OF **FENNER**



Name and Boundary of Electoral Division	
Names and Boundary of adjoining Electoral Division	
Names and Boundaries of ACT Districts (2015)	

**SOURCES**  
This map has been compiled by Spatial Vision from data supplied by the Australian Electoral Commission, Australian Bureau of Statistics, PSMA, ACT Environment and Sustainable Development Directorate, Geoscience Australia and data © OpenStreetMap contributors.

© Commonwealth of Australia (2016)  
© Australian Capital Territory (2016)



*From Barry Dr follows Frith Rd to Dryandra St. Along Dryandra St to David St. Along David St to Sullivans Creek. Along Sullivans Creek to Haig Park. Along Greenway St and Henty St to Limestone Ave. Along Limestone Ave and around the Campbell suburb boundary to Fairbairn Ave.*