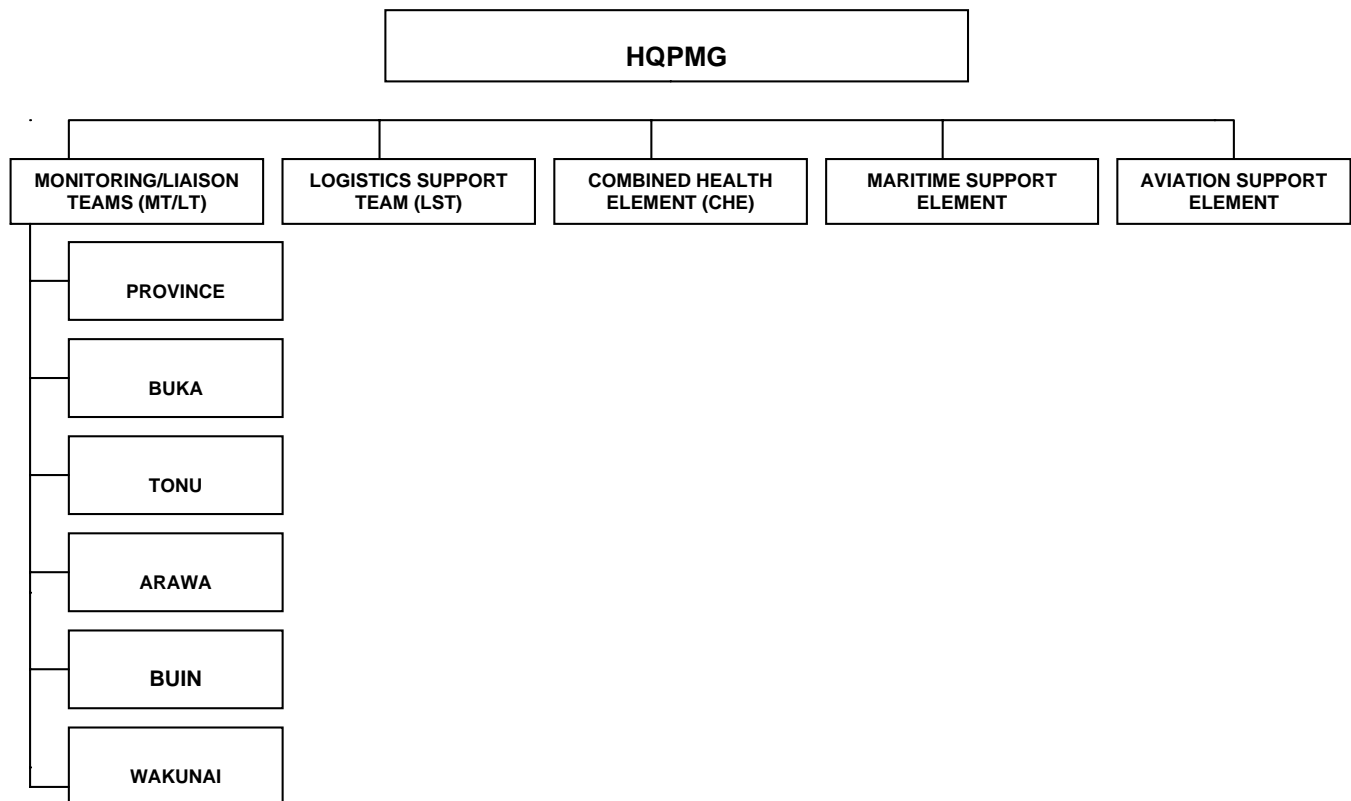


Appendix I - Peace Monitoring Group Locations and Organisation

Peace Monitoring Group Locations

Peace Monitoring Group Organisation



In order to achieve its mission the PMG is broken up into:

A Headquarters element (HQ PMG)
Six monitoring/liasion teams

Support for the PMG comes from:

A Logistics Support Team (LST)
A Combined Health Element (CHE)
A Maritime Element, and
An Aviation Element from 171 Aviation Squadron

The entire PMG comprises approximately 300 personnel from Australia, New Zealand, Fiji and Vanuatu. The PMG has representatives from all three services as well as government officials and representatives from aid agencies.

Disposition of personnel is as follows:

HQ	71	MT Province	9
LST	73	LT Buka	11
CHE	24	MT Tonu	22
171 Aviation Squadron 28		T Arawa	22
		MT Buin	19
		MT Wakunai	25

Source: Commander PMG, Arawa, 16 March 1999.

