

THE NATURE OF THE PLACE

Ivory's Rock has been developed in harmony with its natural setting and is home to many species of birds and wallabies over 635 hectares of bush and parklands. 120 species of birds have been documented over the past 20 years; from tiny Fairy Wrens to enormous Wedgetailed Eagles. Many of the birds, such as the Black Swan, are just stopping off for a few days on their migratory flights. Others, like the Koel and the Channel Billed Cuckoos, fly down from New Guinea for the native fig season and stay to breed in this area. There are four species of wallaby including the rare Brush-tailed Rock Wallaby. Koala sightings are common, as are those of mature Lace Monitors, Brown and Green Tree Snakes and other reptiles. Ivory's Rock is a location for rescued wildlife to be released into a protected environment. The conference centre is a long-term member of Land for Wildlife, and the bushland areas that surround and include

Ivory's Rock are protected under a Conservation Agreement. Ivory's Rock is also part of the cultural landscape of the Ugarapul people, an area that includes White Rock and the Camira Bora Ground in the north. In the southern part there is Mt Flinders, the most sacred of sites, and the resting place of the powerful spirit Yurrangpul, the guardian of traditions and sacred places.

Walking trails have also been developed within the property to allow visitors to access the base of Ivory's Rock and the adjacent ridge tops. These vantage points offer spectacular views toward Brisbane in the east and the Dividing Range in the west.



MAKING THE MOST OF IVORY'S ROCK

Whether you are planning a quiet wedding, an international conference or a boot camp, we can do it all. Having hosted large scale events with international visitors and intimate meetings, Ivory's Rock can provide you with the ideal setting. Our facilities include the **Pavilion**, our central 'village' hub, complete with shops ready for all kinds of retail

outlets; the **Conference Hall**, for meetings, receptions and concerts; **Casuarina Restaurant and Function Centre**, perfect for a reception or business conference. All our campgrounds are equipped with modern bathrooms, and **Jacaranda Campground** has a **Dining Room** to make your stay even better.



Most impressive of all is our **Amphitheatre**, an outdoor shaded venue for concerts large and small, with fantastic acoustics and state of the art technology. As if all this wasn't enough, there's a variety of **accommodation** available,

from simple camping to luxury tents; plus furnished suites for that special occasion. See our website for more information.
www.ivorysrock.org.au

VISITOR
GUIDE

SITE MAP



IVORY'S ROCK CONVENTIONS & EVENTS
Phone (07) 5464 8483
Mobile 0487 004 602
Email enquiries@ivorysrock.org.au
Website www.ivorysrock.org.au
P.O. Box 923, Ipswich QLD 4305
Mt Flinders Rd, Peak Crossing QLD 4306
ABN 49 143 249 290

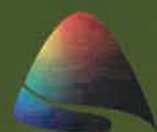
 **Ivory's Rock**
Conventions & Events

VISITOR INFORMATION

THIS IS A NATURAL BUSH ENVIRONMENT

EMERGENCY PROCEDURES

DOMESTIC PETS



Ivory's Rock
Conventions & Events

SITE MAP



INFORMATION



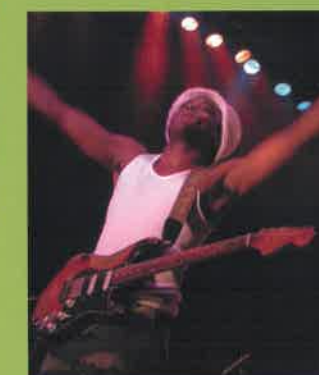
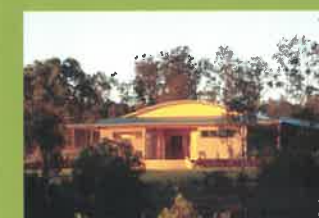
BATHROOMS

STORM SHELTERS

ROUNDBOUTS

Photos right

OUR FACILITIES





So Many Possibilities...

Apart from a distinctive natural, bushland setting, Ivory's Rock Conventions & Events offers a unique range of possibilities with its outstanding facilities. It is not just one venue but rather a village of venues, which can be used individually or combined to suit a variety of needs.

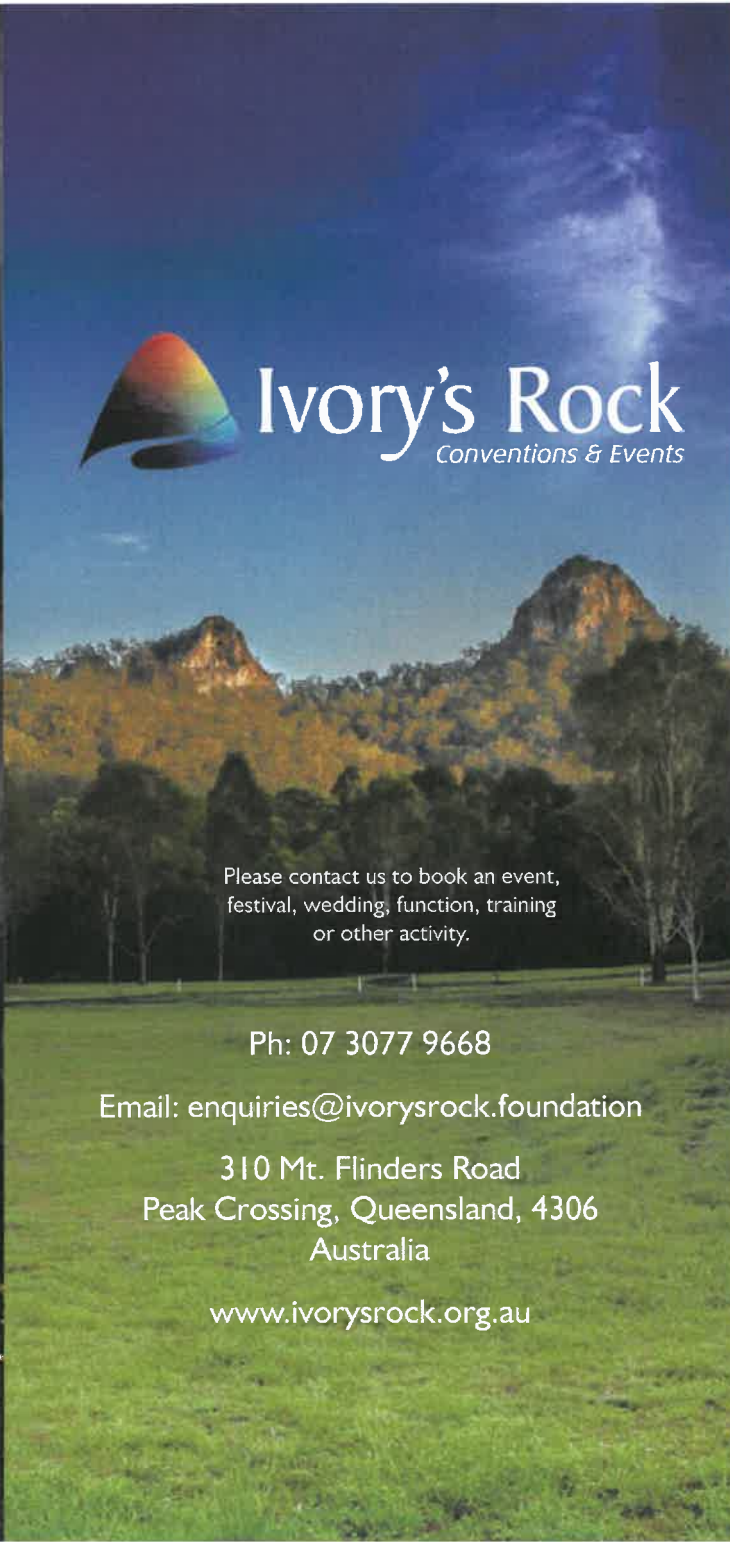
- Three Elegant Function Centres.
- Outdoor Amphitheatre with stage and state of the art sound system.
- Pavilion with shops and concessions area.
- Accommodations – Apartments, luxury cottage, cabins, bunkhouses, camping and glamping.

Private and beautifully appointed, each venue is a gem within spacious, parkland surrounds amid the sounds, sights and smells of the unique Australian bush.



Ivory's Rock

Conventions & Events



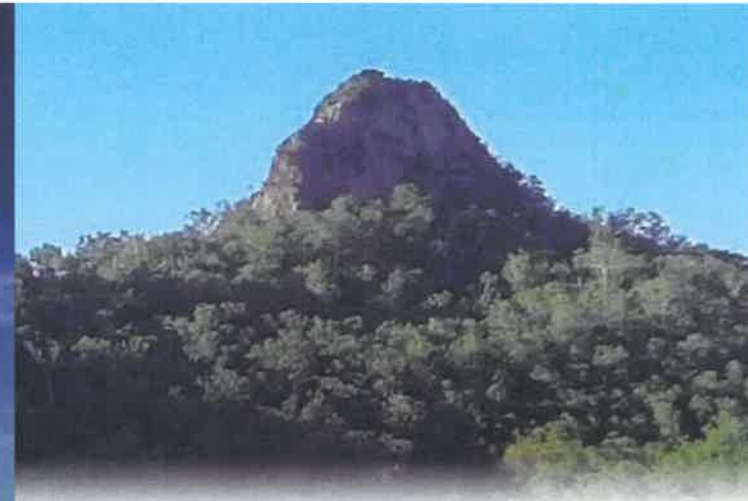
Please contact us to book an event,
festival, wedding, function, training
or other activity.

Ph: 07 3077 9668

Email: enquiries@ivorysrock.foundation

310 Mt. Flinders Road
Peak Crossing, Queensland, 4306
Australia

www.ivorysrock.org.au



Exceptional Facilities In
A Stunning Setting



Ivory's Rock

Conventions & Events





Outdoor Festivals, Events, Concerts, Bootcamps

Ivory's Rock is a spectacular Event facility for up to 5,000 people, set in 600 acres of private parklands and natural forested conservation areas.

The Amphitheatre

The Amphitheatre provides a breathtaking and spectacular location with views of landmark Ivory's Rock. Entirely covered with shade sails, the venue can hold up to 4,300 people in tiered seating or it can be set up cabaret style. Modern bathroom facilities and space for food and beverage concessions with full licence are at the rear. The stage is well appointed with green rooms, audio visual, broadcast and production rooms attached. Six sound booths are located behind the seating. The venue features great natural acoustics and state of the art sound system.



The Pavilion

Either as an adjunct to the Amphitheatre or a stand alone venue for festivals, trade days or jamborees, the Pavilion, a series of permanent shops and cafes, provides a central meeting point for the venue and is capable of providing full catering. The 25 shops placed in a horseshoe arc around the covered central dome each have a floor space of 36 square metres with full power and water with rear service and delivery access. The large central dome is 600 metres across with space for table seating for up to 300 people. It can be used as a recreational area or for performances with a central stage.



Functions. Weddings, Conferences

When you want to make a statement this venue says it all ...

Within a bushland setting surrounded by manicured gardens the stunning Casuarina Function Centre opens to a reception area serviced by a fully equipped bar and club lounge with large veranda area that can be utilised as an outdoor al fresco dining space. The venue can be configured with five separate dining rooms or one large room and two smaller rooms. Together with a fully operational commercial kitchen and peaceful oasis courtyard, Casuarina is the perfect setting for weddings, functions and seminars.



A tranquil space with endless possibilities...

The Conference Centre is located in a tranquil and beautiful park like setting with facilities the standard of a modern 5-star hotel conference centre; the venue holds up to 360 people theatre style. Fully covered verandas offer breakout opportunities set alongside the manicured lawn and garden areas. The architecturally designed Centre carries many possibilities, whether for a conference, function, wedding reception, training seminar or performance with a stage, fully functional kitchen and full AV/audio facilities.



Friendly Queensland hospitality...

A simple, well-appointed structure with wide Queensland verandas, the Jackaranda Restaurant is suitable for servicing up to 56 guests with a fully functional commercial kitchen. The capacity can be easily expanded with the addition of marquees erected on the adjoining wide lawns. It is highly suitable for smaller conferences, trainings, meetings and functions held over several days with participants staying onsite in the Jackaranda campgrounds.



A range of accommodations

The View Apartments have 6 well-appointed air conditioned rooms with en suites, queen sized beds and balconies. The Lodge, a luxurious, air conditioned cottage has a queen sized bed, en suite, living area, kitchenette and private deck. Four motel style rooms next door each have air conditioning, double bed, en suite and private patio. The Ironbark Village has 13 small air conditioned cabins with a cafe/dining room and reception area. Air conditioned, furnished bunkhouses are also available.

The 6 campgrounds, set in 42 hectares of landscaped parklands, can accommodate up to 3,300 people, each with a modern bathroom block and some with powered sites for caravans and motorhomes. Glamping is the new trend and we offer two experiences - the Eco Tent and Festival Tent, with everything, including queen high rise bed, tables & chairs ...like being on safari!

Sample Photographs – Ivory's Rock Conventions and Events Centre Visual Amenity Impact of Inland Rail on Mt Flinders Road:

Mt Flinders Road is the gateway to both Ivory's Rock Conventions and Events Centre and to the Flinders-Goolman Conservation Estate.

Road after rail built (sample, may not be exact scale):



Road before rail built with view of Peak Mountains and Flinders Peak:





Outdoor Open-air Amphitheatre to seat 5,000



Open-air Pavilion meeting, event and catering space



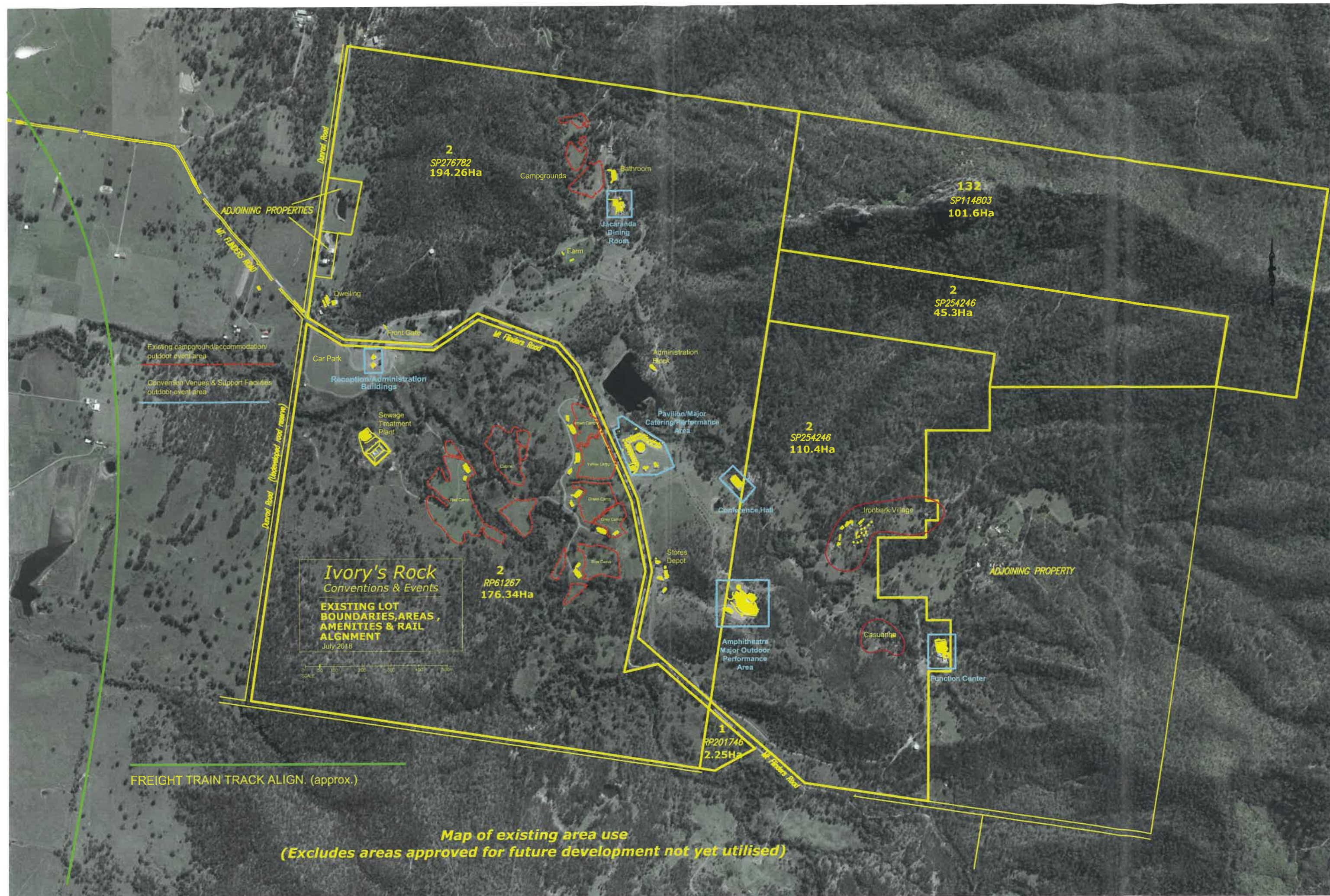
Sample Campground ×



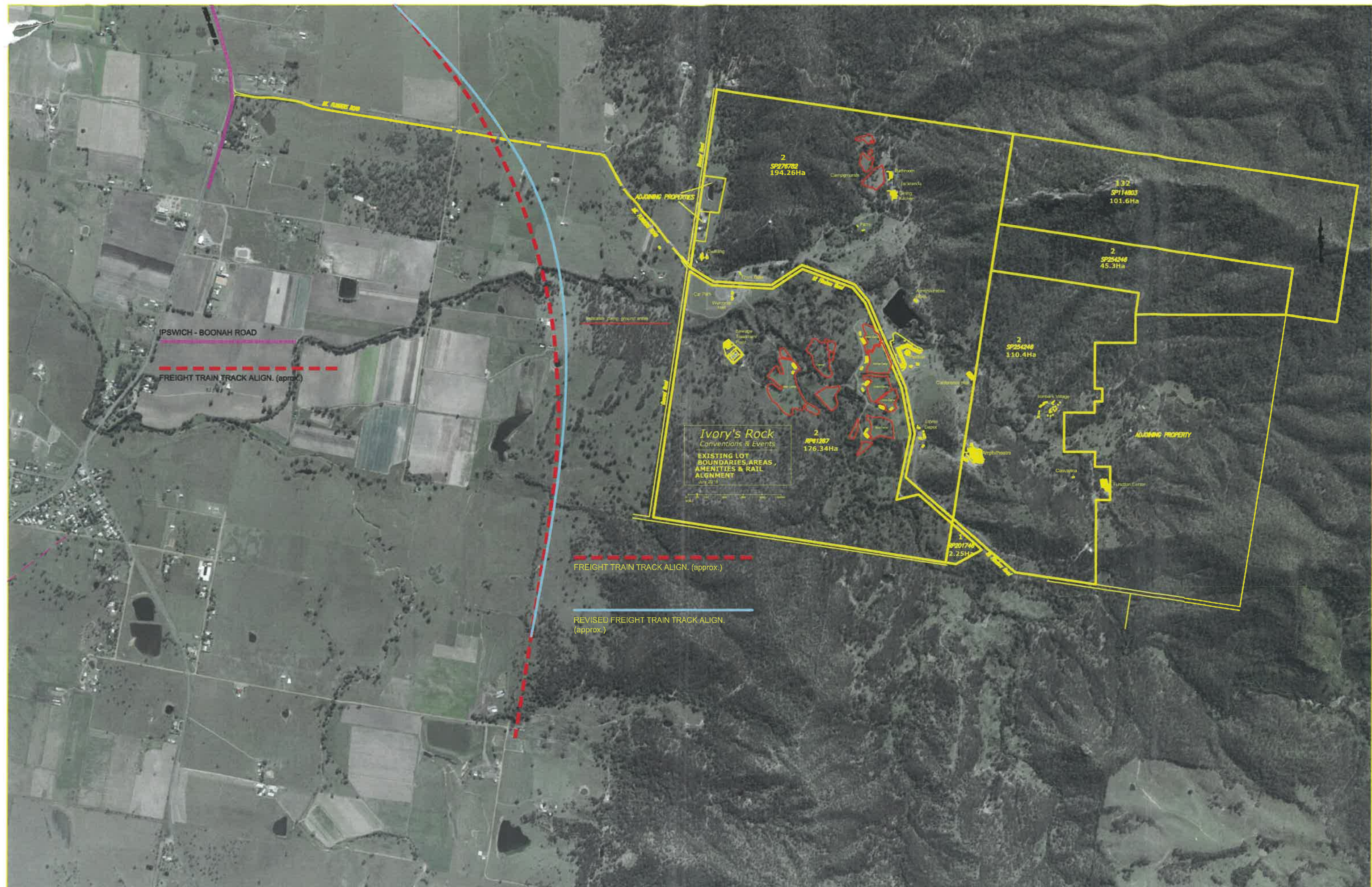
RV's and Motorhomes – Sample Caravan Club event

For a wide range of photos and videos visit:

Ivorysrock.org.au



Map of existing area use
(Excludes areas approved for future development not yet utilised)



19 November 2019



ARTC REF 2-0000-340-PCM-00-LT-14112019

Jan McGregor
Ivory's Rock Convention and Events Centre
Via email:

Dear Jan

RESPONSE TO QUERY – IVORY'S ROCK CONVENTION AND EVENTS CENTRE

As requested by email correspondence to our team, please find a detailed response below to your queries on Tuesday 22 October 2019 and Tuesday 12 November 2019 regarding noise impacts at locations within the Ivory's Rock Convention and Events Centre (IRCE).

The information presented has been based on forecasted rail operations on the Calvert to Kagaru (C2K) project section for the year 2025 and 2040 and has been undertaken solely to provide an indication of potential noise levels (rather than a statement of compliance or otherwise).

Status update

A detailed assessment of rail noise levels has been prepared to support the preliminary draft Environmental Impact Statement (EIS) for the C2K project.

The assessment is currently being reviewed for adequacy by the Office of the Coordinator General (OCG) and various referral agencies.

We are currently in the process of receiving and addressing comments from the OCG and various referral agencies. We are required to respond to comments and review the information we have presented to achieve adequacy and have it ready for public exhibition.

In this regard, the enclosed rail noise levels in **Attachment A** may be subject to change pending completion of the environmental assessment process.

Next Steps

Please note that we are currently receiving feedback and discussing a number of specific items with the OCG and relevant referral agencies. The nature of the regulatory authority comments relate to the technical content of our submitted preliminary Draft EIS document – for each of our Queensland Projects. During the current OCG adequacy review period, we expect we may need to finalise and review several matters prior to releasing any further EIS-related details or formally responding to additional requests for information.

The continued involvement of IRCE representatives on our Inland Rail Project is welcomed. Should you wish to discuss further, please do not hesitate to discuss with the team.

Yours sincerely

Long Vo

Project Manager – C2K

Inland Rail

Australian Rail Track
Corporation Ltd

ACN 081 455 754

ABN 75 081 455 754

Level 9

40 Creek Street
Brisbane Qld 4000

GPO Box 2462
Queen Street

Brisbane QLD 4000

1800 732 761

inlandrailenquiries@artc.com.au

inlandrail.com.au



The Australian Government is delivering
Inland Rail through the Australian
Rail Track Corporation (ARTC), in
partnership with the private sector.

Attachment A: Basis of assessment

Calculated rail noise levels

Noise prediction modelling software was used to develop a three-dimensional representation of the C2K alignment and surrounding environment. Key metrics of the predictions include:

- $L_{Aeq}(15\text{ hr})$ represents the cumulative effects of all Inland Rail movements occurring in the 15-hour daytime period from 0700 to 2200
- $L_{Aeq}(9\text{ hr})$ represents the cumulative effects of all Inland Rail movements occurring in the 9-hour night time period from 2200 to 0700
- L_{Amax} the 'typical maximum noise level' for a train pass-by event

The highest predicted external (façade corrected) noise levels are provided in **Table 1**. Noise levels are presented in dB(A), rounded to the nearest whole number.

Daytime ($L_{Aeq, 15hr}$); night-time ($L_{Aeq, 9\text{ hr}}$) and maximum pass-by predictions have been provided in **Attachment A**. Please see **Attachment B** for map locations.

Table 1 Predicted rail noise levels for IRCE requested locations of interest

LOCATION	ID	R.L.	YEAR	DAY ($L_{Aeq\ 15\text{ HR}}$)	NIGHT ($L_{Aeq\ 9\text{ HR}}$)	MAXIMUM (L_{Amax})
1 – Event Area 1	260711	72.9	2025 2040	45 46	46 46	71 71
2 – Event Area 2	260581	77.6	2025 2040	41 42	42 43	67 67
3 – Event Area 3	260599	84.4	2025 2040	37 38	38 38	63 63
4 – Dwelling	260910	71.4	2025 2040	50 51	51 51	76 76
5 – Welcome Hall	260828	69.2	2025 2040	49 50	50 50	75 75
6 – Jacaranda Campgrounds	261067	85.9	2025 2040	33 34	34 34	59 59
7 – Pavilion Catering	260718	81.0	2025 2040	38 39	39 39	64 64
8 – Amphitheatre Convention	-	-	2025 2040	Not calculated	Not calculated	Not calculated

Notes to **Table 1**:

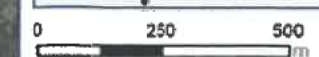
R.L. ground level

Not calculated: no point-to-point noise prediction available – building not digitised within SoundPLAN model

CALVERT TO KAGARU

IRCE PLAN

- Chainage (1000m)
- Inland Rail milestone alignment
- Cadastral lot
- Local government area (LGA)
- 1 IRCE requested locations of interest



Coordinate System: GDA 1994 MGA Zone 56

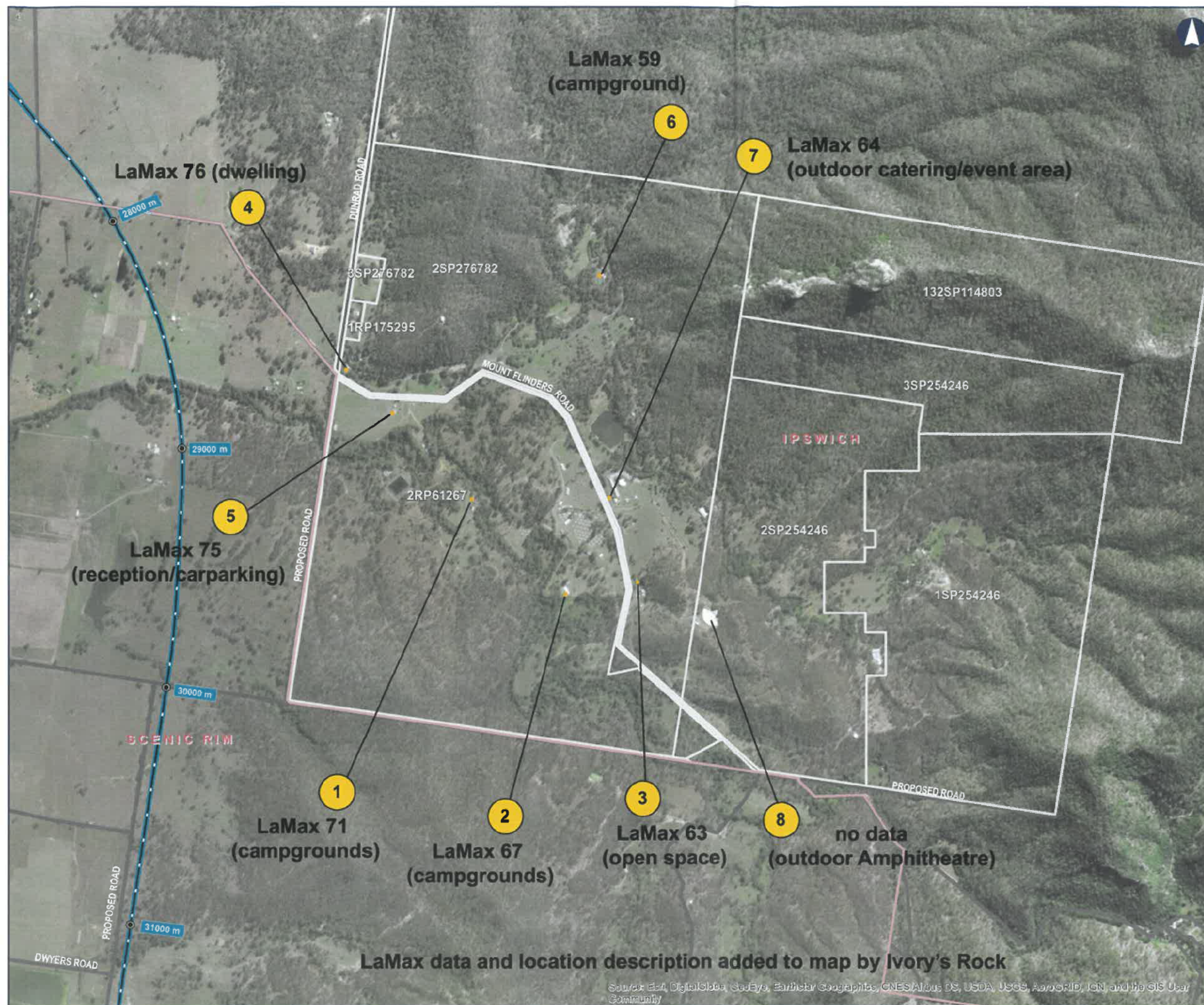
ARTC makes no representation or warranty and assumes no duty of care or other responsibility to any party as to the completeness, accuracy or suitability of the information contained in this GIS map. The GIS map has been prepared from material provided to ARTC by an external source and ARTC has not taken any steps to verify the completeness, accuracy or suitability of that material. ARTC will not be responsible for any loss or damage suffered as a result of any person whatsoever placing reliance upon the information contained within this GIS map.

Date: 15/11/2019
 Author: IR GIS
 Data Sources: DNRME; Geoscience Australia

Paper: A3
 Scale: 1:15,000

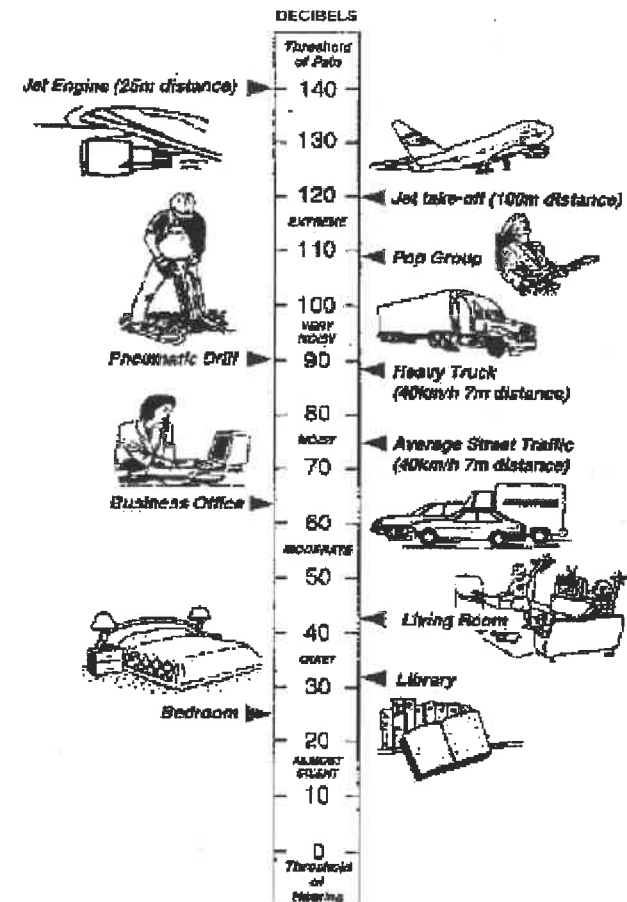
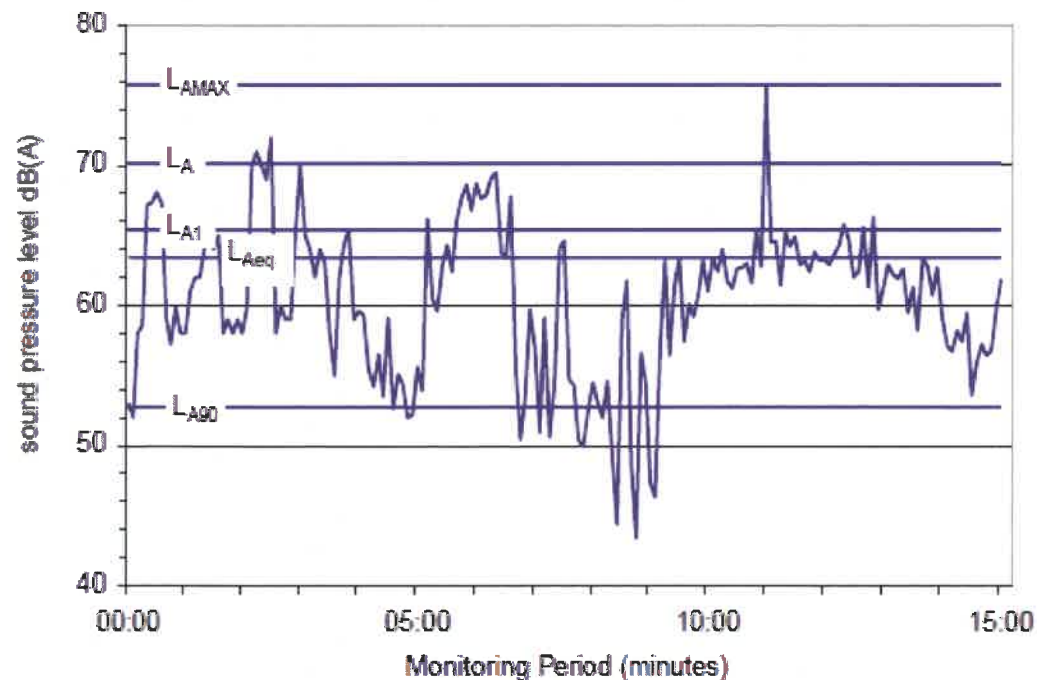
LaMax data and location description added to map by Ivory's Rock

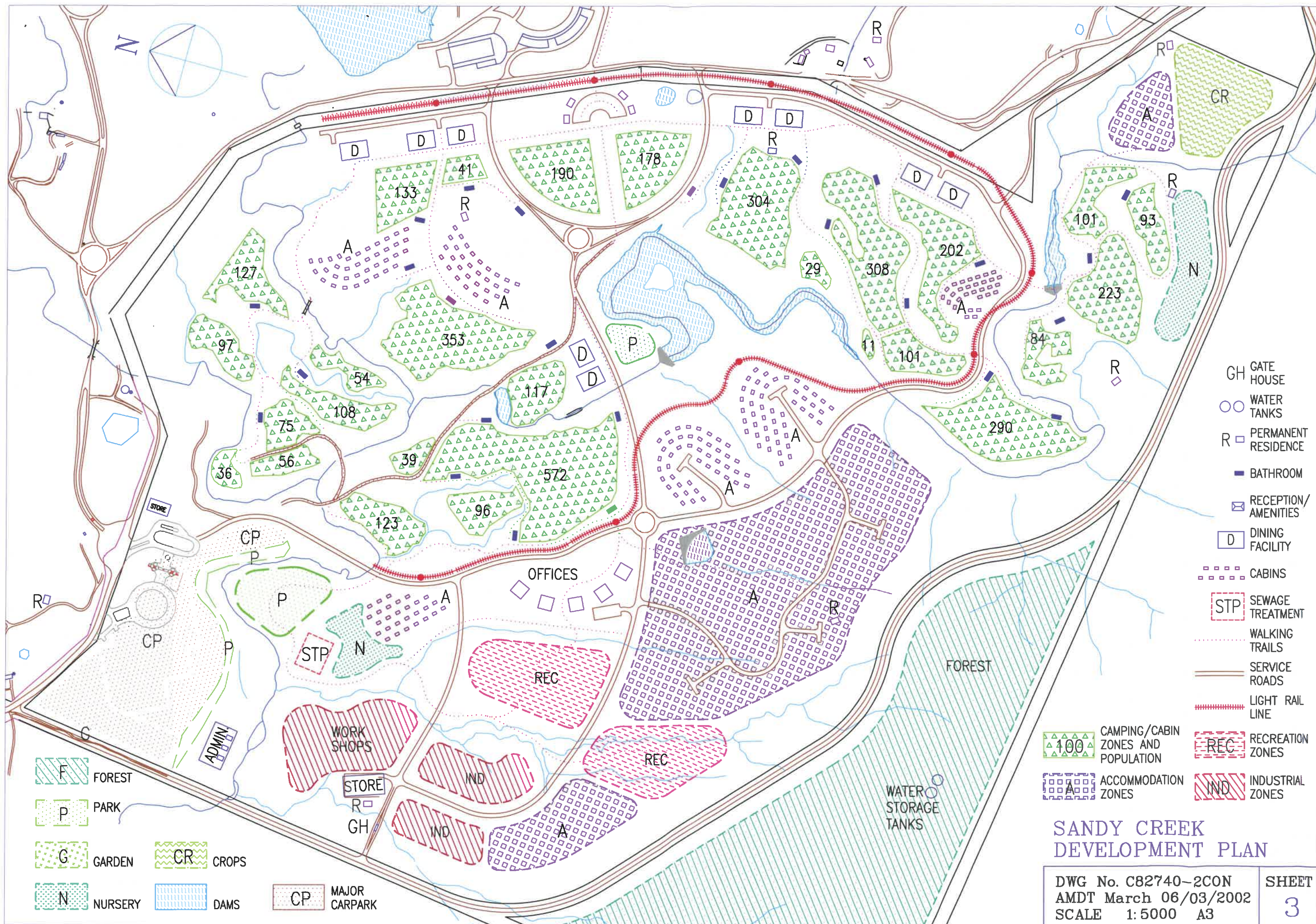
Source: Esri, DigitalGlobe, GeoEye, Earthstar Geographics, CNES/Airbus DS, USDA, USGS, AeroGRID, IGN, and the GIS User Community

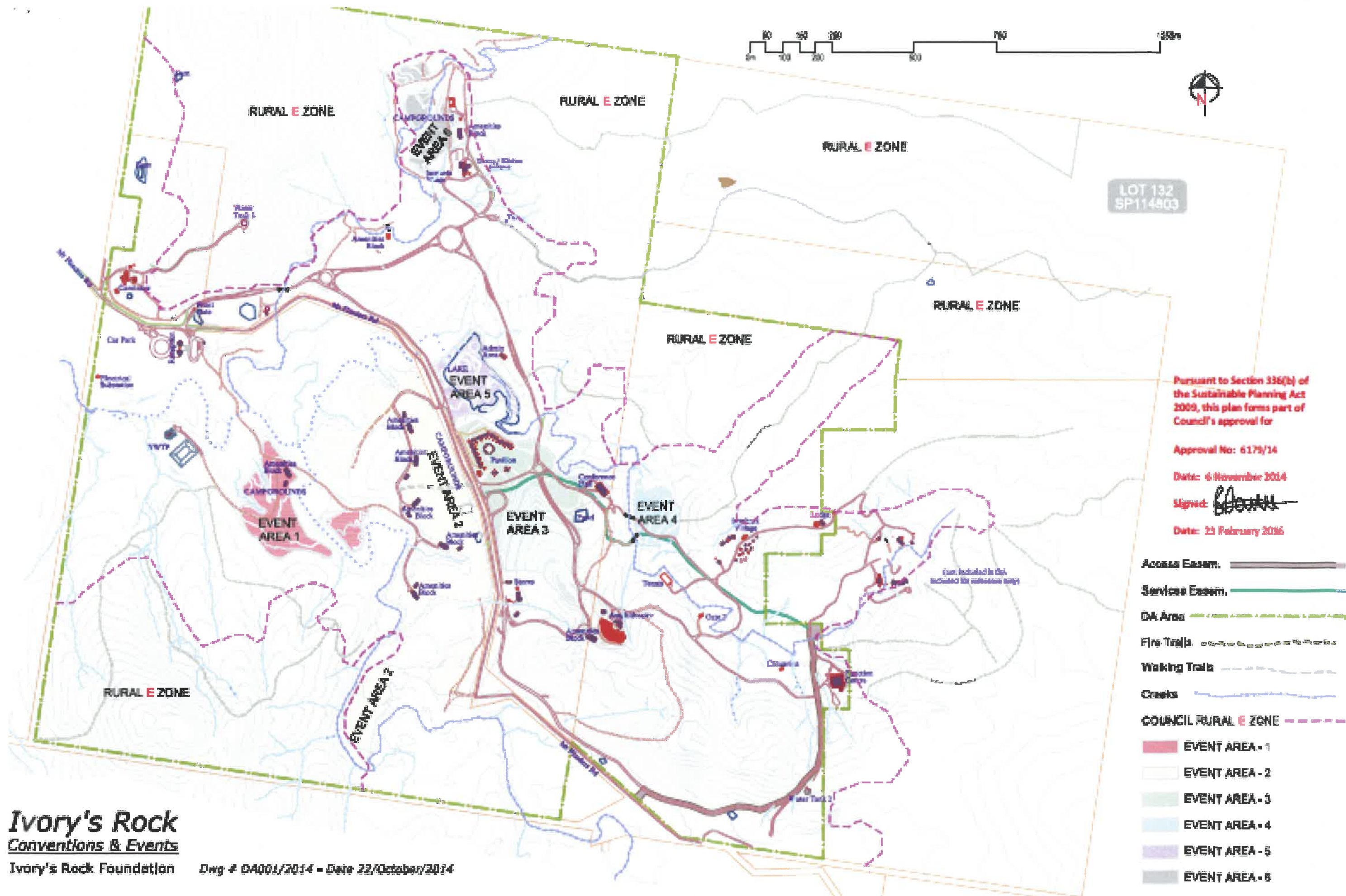


APPROACH TO NOISE

- What is noise
- Sound levels
- Noise goals



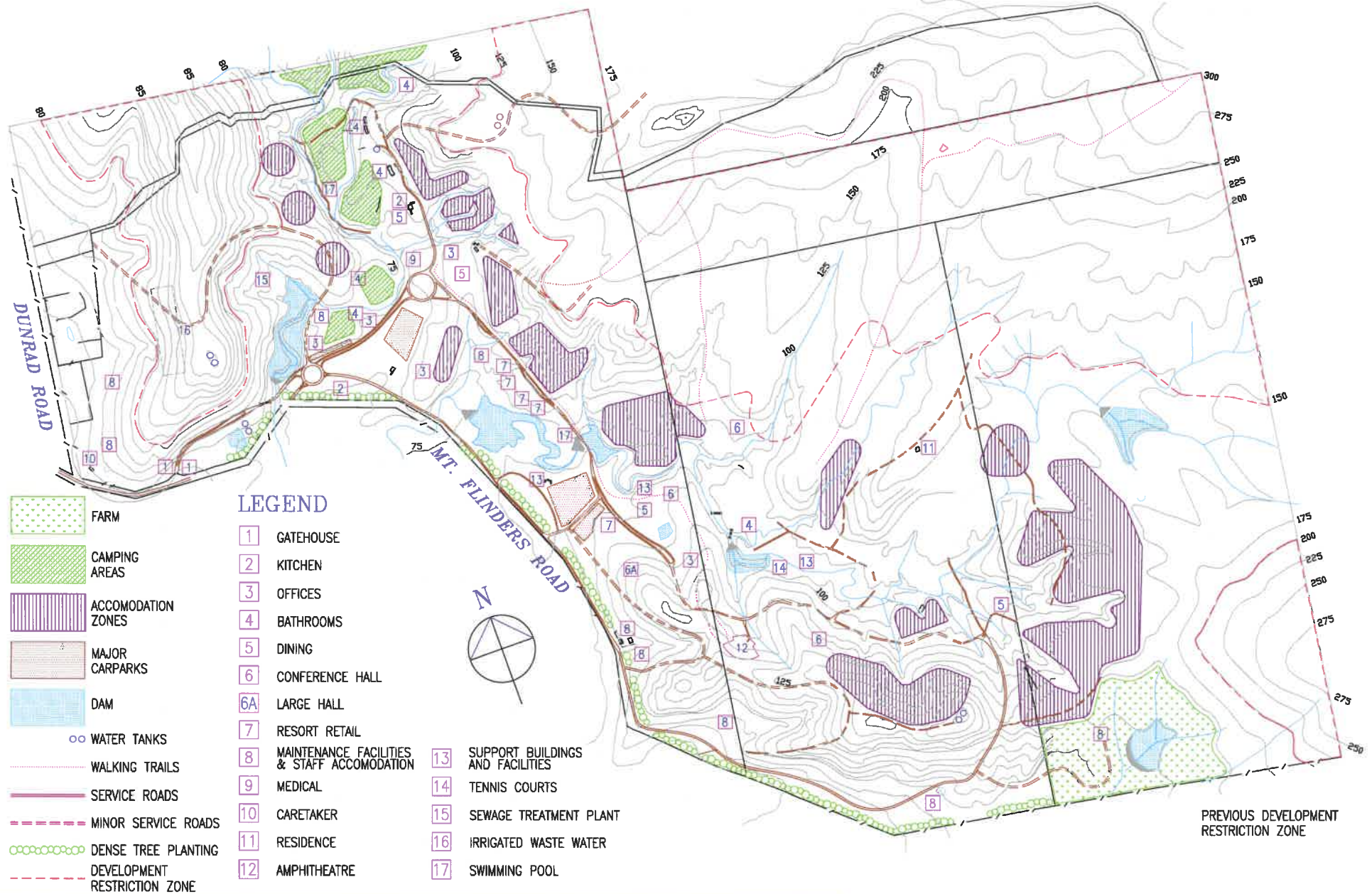




Ivory's Rock Conventions & Events

Ivory's Rock Foundation

Dwg # DA001/2014 - Date 22/October/2014



PARNELL AND ASSOCIATES
CONSULTING CIVIL AND STRUCTURAL ENGINEERS
110 BRANDENBURG ROAD MALENY
TELEPHONE (074) 941368 FAX (074) 941374

Client	Ivory's Rock Conference Centre		
Location	Mt. Flinders Rd., Peak Crossing		
Project	Development Restriction	Scale	1:10,000 A3
Dwg. No.	C82740-2RZ	Amdt	A
		Date	22/10/96

**DEVELOPMENT
RESTRICTION ZONE**