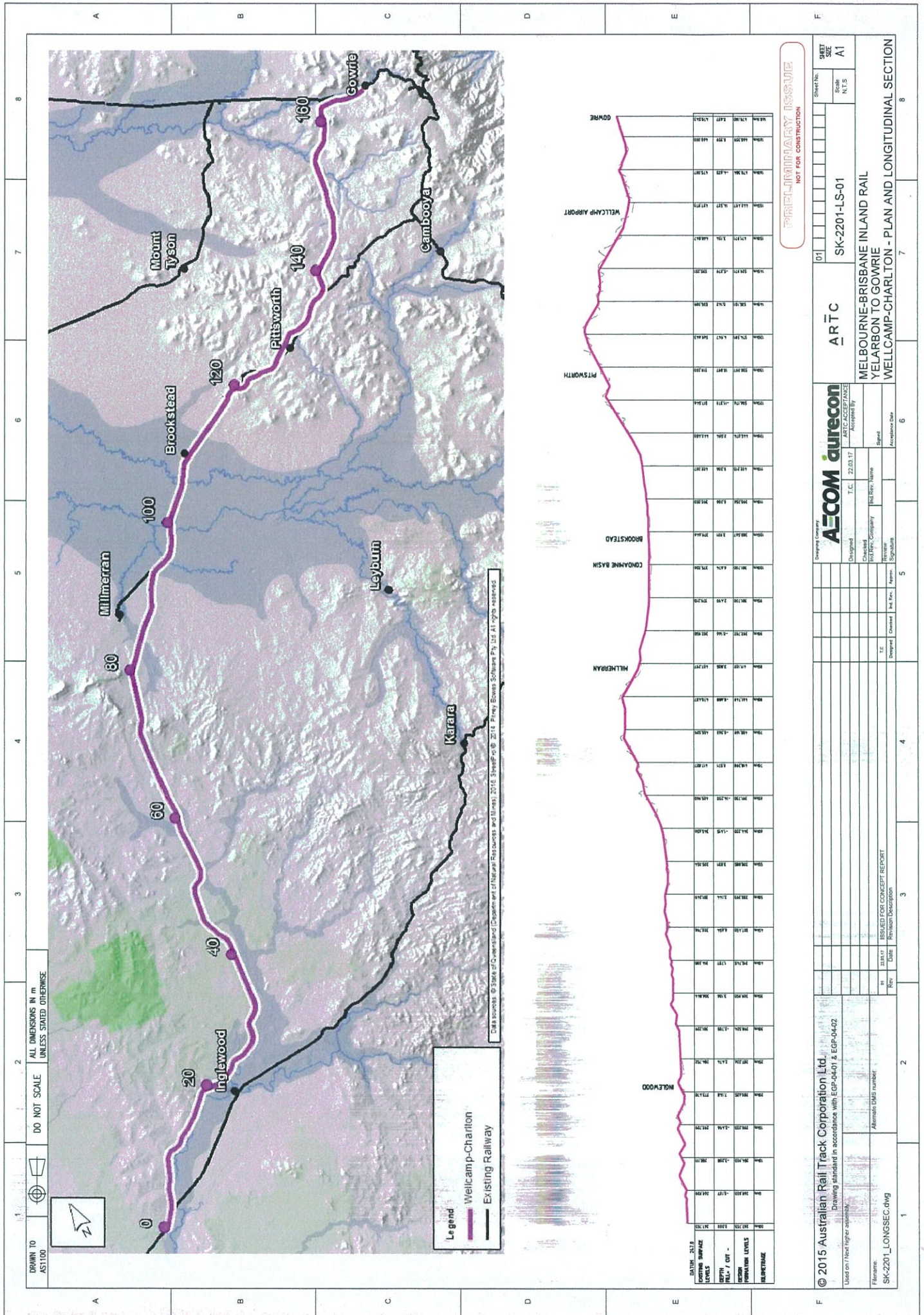
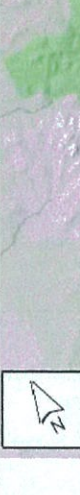


Preliminary Assure
 NOT FOR CONSTRUCTION

© 2015 Australian Rail Track Corporation Ltd. Drawing standard in accordance with EGP-04-01 & EGP-04-02 Used on / used higher assembly File name: SK-3100_LONGSEC.dwg Alternative DNS number:	ARTC	SK-3100-LS-01	Sheet No. 01 of 01	Scale N.T.S.	SHEET SIZE A1
MELBOURNE-BRISBANE INLAND RAIL YELARBON TO GOWRIE BASE CASE MODIFIED - PLAN AND LONGITUDINAL SECTION					
Drawn by: [Blank] T.C. 22.03.17 Checked: [Blank] JCL/Rev. Company JCL/Rev. Name JCL/Rev. Date Reviewer/Signatures: [Blank] Signature: [Blank] Acceptance Date: 06					



DRAWN TO AST100
 DO NOT SCALE
 ALL DIMENSIONS IN m UNLESS STATED OTHERWISE



Legend
 — Wellcamp-Charlton
 — Existing Railway

Data sources: © State of Queensland (Department of Natural Resources and Mines), 2016; ShapPro © 2014; Pirny, Bones Software Pty. Ltd. All rights reserved.

STATION	CHANGING	LEVEL
INGLEWOOD	20	100.00
MILLMERRAN	80	100.00
BROOKSTEAD	100	100.00
PITTSWORTH	140	100.00
WELLCAMP AIRPORT	160	100.00
GOWRIE	160	100.00

PRELIMINARY DESIGN
 NOT FOR CONSTRUCTION

AECOM aurecon		ARTC	SK-2201-LS-01	SHEET NO. A1
Melbourne-Brisbane Inland Rail Yellabon to Gowrie		WELLCAMP-CHARLTON - PLAN AND LONGITUDINAL SECTION		
Designed	Checked	Reviewed	Accepted	Scale
T.C.	J.C.	J.C.	J.C.	N.T.S.
Date	Date	Date	Date	Date
22/03/17	22/03/17	22/03/17	22/03/17	22/03/17
Revision Description	Revision Description			
1	1			
© 2015 Australian Rail Track Corporation Ltd. Drawing standard in accordance with EGP-04-01 & EGP-04-02				
Used on / Used higher approval				
File name: SK-2201_LONGSEC.dwg				