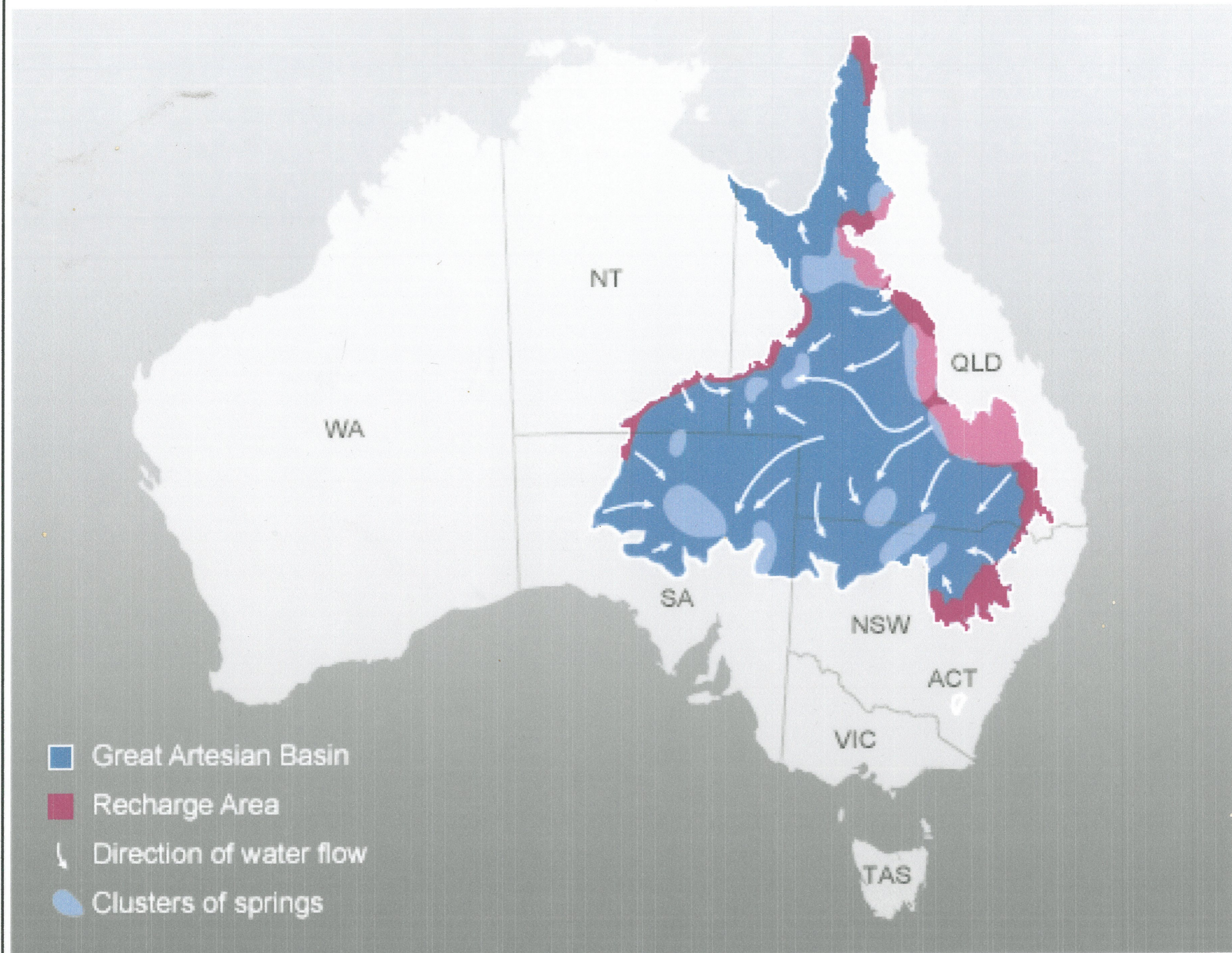
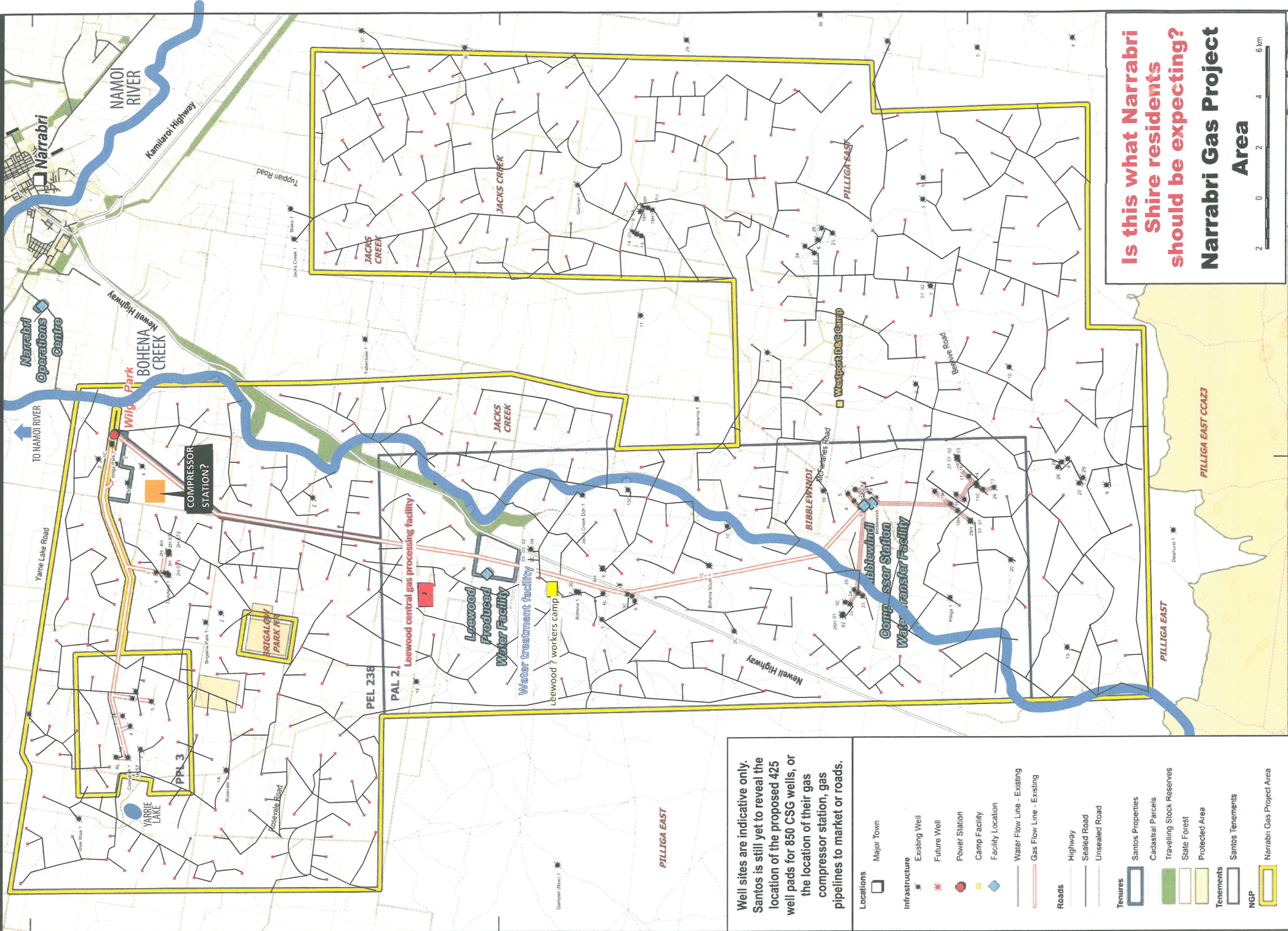


## Great Artesian Basin



In the classic model of the Great Artesian Basin, the aquifer is mainly recharged by rainfall and streamflow along the eastern border of the Basin, and is discharged in a series of springs that lie mainly in the south of the Basin.

**Artist's impression of the 850 PLANNED COAL SEAM GAS WELLS for the Santos Narrabri Gas Project**



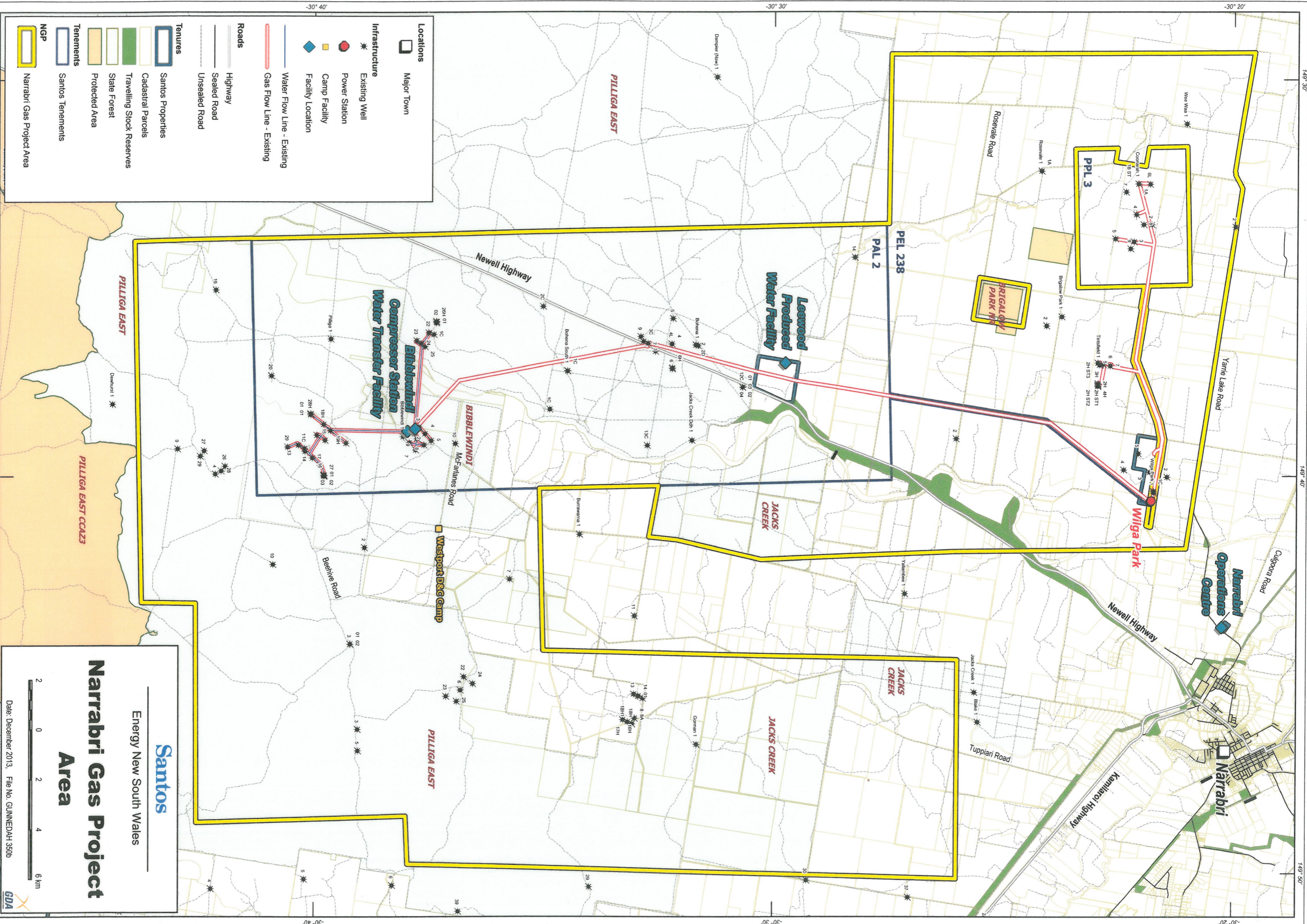
Well sites are indicative only. Santos is still yet to reveal the location of the proposed 425 well pads for 850 CSG wells, or the location of their gas compressor station, gas pipelines to market or roads.

<b>Locations</b>	Major Town
<b>Infrastructure</b>	Existing Well
	Future Well
	Power Station
	Camp Facility
	Facility Location
	Water Flow Line - Existing
	Gas Flow Line - Existing
<b>Roads</b>	Highway
	Sealed Road
	Unsealed Road
<b>Tenures</b>	Santos Properties
	Cadastral Parcels
	Travelling Stock Reserves
	State Forest
	Protected Area
<b>Tenements</b>	Santos Tenements
<b>NGP</b>	Narrabri Gas Project Area

**Is this what Narrabri Shire residents should be expecting?**

**Narrabri Gas Project Area**





- |  |                            |
|--|----------------------------|
|  | Major Town                 |
|  | Existing Well              |
|  | Power Station              |
|  | Camp Facility              |
|  | Facility Location          |
|  | Water Flow Line - Existing |
|  | Gas Flow Line - Existing   |
|  | Highway                    |
|  | Sealed Road                |
|  | Unsealed Road              |
|  | Santos Properties          |
|  | Cadastral Parcels          |
|  | Travelling Stock Reserves  |
|  | State Forest               |
|  | Protected Area             |
|  | Santos Tenements           |
|  | NGP                        |
|  | Narrabri Gas Project Area  |

Energy New South Wales

## Narrabri Gas Project Area

Date: December 2013, File No. GUNNEDAH 3505

2 0 2 4 6 km



Gas turbine compressor piperack in the hub compressor station area at Santos GLNG's Roma hub, one of three gas hubs under construction.



Gas turbine compressor piperack in the hub compressor station area at Santos GLNG's Roma hub, one of three gas hubs under construction.



**Electrical connections are underway for the nodal compressors at Fairview Hub 04 in Fairview field**



Underground services are installed in trenches in the utilities area at the smaller of two gas hubs in Fairview field. Concrete foundations will soon be poured for other facilities set to be built in this area.



Underground services are installed in trenches in the utilities area at the smaller of two gas hubs in Fairview field. Concrete foundations will soon be poured for other facilities set to be built in this area.







GLNG-40-K128 Fairview General