

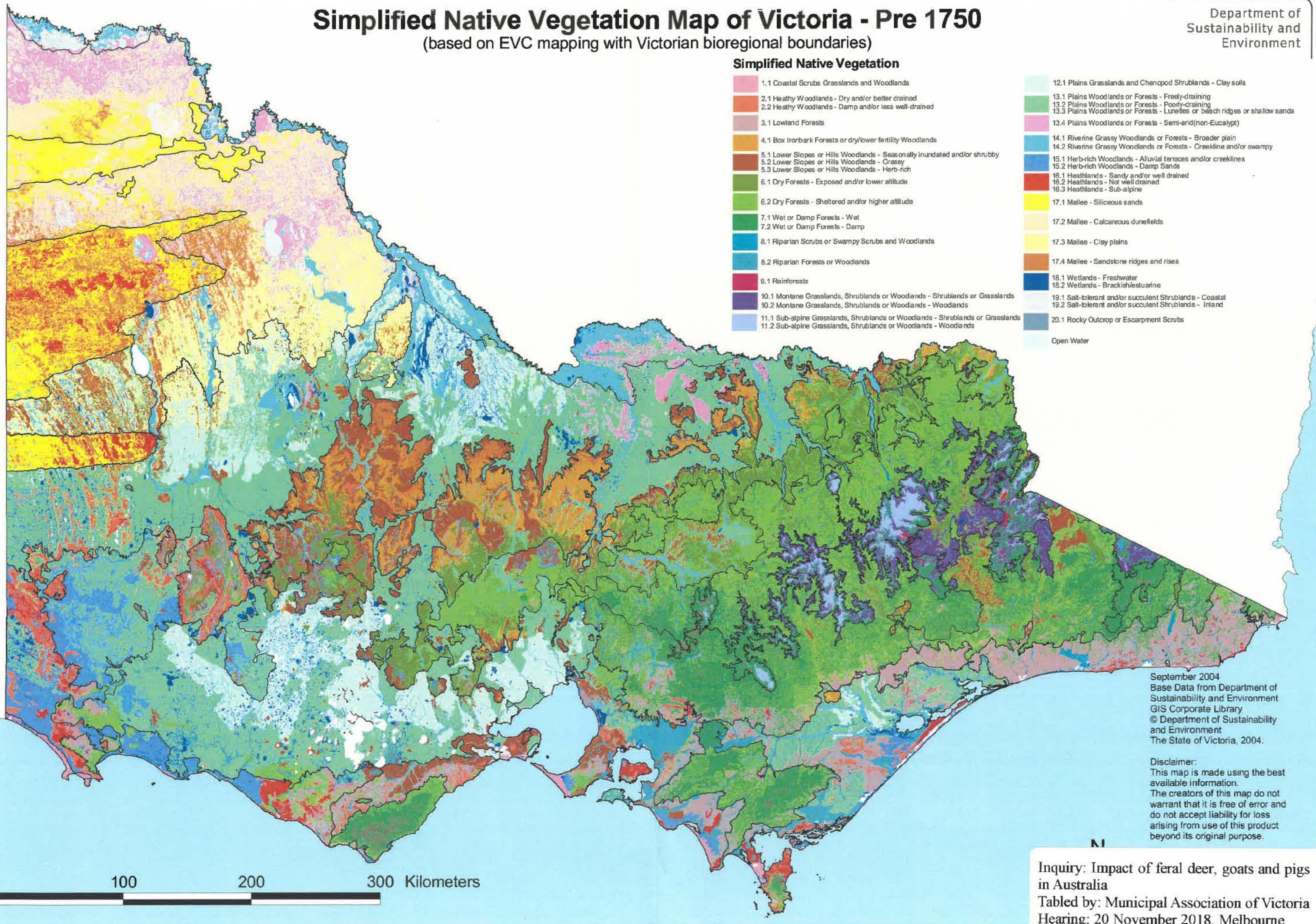
# Simplified Native Vegetation Map of Victoria - Pre 1750

(based on EVC mapping with Victorian bioregional boundaries)

Department of  
Sustainability and  
Environment

## Simplified Native Vegetation

- |  |  |
|--|--|
| 1.1 Coastal Scrubs Grasslands and Woodlands                                    | 12.1 Plains Grasslands and Chenopod Shrublands - Clay soils                  |
| 2.1 Healthy Woodlands - Dry and/or better drained                              | 13.1 Plains Woodlands or Forests - Freely-draining                           |
| 2.2 Healthy Woodlands - Damp and/or less well-drained                          | 13.2 Plains Woodlands or Forests - Poorly-draining                           |
| 3.1 Lowland Forests  | 13.3 Plains Woodlands or Forests - Lunelles or beach ridges or shallow sands |
| 4.1 Box Ironbark Forests or dry/lower fertility Woodlands                      | 13.4 Plains Woodlands or Forests - Semi-arid(non-Eucalypt)                   |
| 5.1 Lower Slopes or Hills Woodlands - Seasonally inundated and/or shrubby      | 14.1 Riverine Grassy Woodlands or Forests - Broader plain                    |
| 5.2 Lower Slopes or Hills Woodlands - Grassy                                   | 14.2 Riverine Grassy Woodlands or Forests - Creekline and/or swampy          |
| 5.3 Lower Slopes or Hills Woodlands - Herb-rich                                | 15.1 Herb-rich Woodlands - Alluvial terraces and/or creeklines               |
| 6.1 Dry Forests - Exposed and/or lower altitude                                | 15.2 Herb-rich Woodlands - Damp Sands  |
| 6.2 Dry Forests - Sheltered and/or higher altitude                             | 16.1 Heathlands - Sandy and/or well drained                                  |
| 7.1 Wet or Damp Forests - Wet  | 16.2 Heathlands - Not well drained   |
| 7.2 Wet or Damp Forests - Damp   | 16.3 Heathlands - Sub-alpine   |
| 8.1 Riparian Scrubs or Swampy Scrubs and Woodlands                             | 17.1 Mallee - Siliceous sands  |
| 8.2 Riparian Forests or Woodlands  | 17.2 Mallee - Calcareous dunefields  |
| 9.1 Rainforests  | 17.3 Mallee - Clay plains  |
| 10.1 Montane Grasslands, Shrublands or Woodlands - Shrublands or Grasslands    | 17.4 Mallee - Sandstone ridges and rises                                     |
| 10.2 Montane Grasslands, Shrublands or Woodlands - Woodlands                   | 18.1 Wetlands - Freshwater   |
| 11.1 Sub-alpine Grasslands, Shrublands or Woodlands - Shrublands or Grasslands | 18.2 Wetlands - Brackish/estuarine   |
| 11.2 Sub-alpine Grasslands, Shrublands or Woodlands - Woodlands                | 19.1 Salt-tolerant and/or succulent Shrublands - Coastal                     |
|  | 19.2 Salt-tolerant and/or succulent Shrublands - Inland                      |
|  | 20.1 Rocky Outcrop or Escarpment Scrubs                                      |
|  | Open Water   |



September 2004  
Base Data from Department of  
Sustainability and Environment  
GIS Corporate Library  
© Department of Sustainability  
and Environment  
The State of Victoria, 2004.

Disclaimer:  
This map is made using the best  
available information.  
The creators of this map do not  
warrant that it is free of error and  
do not accept liability for loss  
arising from use of this product  
beyond its original purpose.

Inquiry: Impact of feral deer, goats and pigs  
in Australia  
Tabled by: Municipal Association of Victoria  
Hearing: 20 November 2018, Melbourne



# Simplified Native Vegetation Map of Victoria - Extant

(based on EVC mapping with Victorian bioregional boundaries)

Department of  
Sustainability and  
Environment

## Simplified Native Vegetation

- |  |  |
|--|--|
| 1.1 Coastal Scrubs Grasslands and Woodlands                                    | 12.1 Plains Grasslands and Chenopod Shrublands - Clay soils                  |
| 2.1 Heathy Woodlands - Dry and/or better drained                               | 13.1 Plains Woodlands or Forests - Freely-draining                           |
| 2.2 Heathy Woodlands - Damp and/or less well-drained                           | 13.2 Plains Woodlands or Forests - Poorly-draining                           |
| 3.1 Lowland Forests  | 13.3 Plains Woodlands or Forests - Lunelles or beach ridges or shallow sands |
| 4.1 Box Ironbark Forests or dry/lower fertility Woodlands                      | 13.4 Plains Woodlands or Forests - Semi-arid(non-Eucalypt)                   |
| 5.1 Lower Slopes or Hills Woodlands - Seasonally inundated and/or shrubby      | 14.1 Riverine Grassy Woodlands or Forests - Broader plain                    |
| 5.2 Lower Slopes or Hills Woodlands - Grassy                                   | 14.2 Riverine Grassy Woodlands or Forests - Creekline and/or swampy          |
| 5.3 Lower Slopes or Hills Woodlands - Herb-rich                                | 15.1 Herb-rich Woodlands - Alluvial terraces and/or creeklines               |
| 6.1 Dry Forests - Exposed and/or lower altitude                                | 15.2 Herb-rich Woodlands - Damp Sands  |
| 6.2 Dry Forests - Sheltered and/or higher altitude                             | 16.1 Heathlands - Sandy and/or well drained                                  |
| 7.1 Wet or Damp Forests - Wet  | 16.2 Heathlands - Not well drained   |
| 7.2 Wet or Damp Forests - Damp   | 16.3 Heathlands - Sub-alpine   |
| 8.1 Riparian Scrubs or Swampy Scrubs and Woodlands                             | 17.1 Mallee - Siliceous sands  |
| 8.2 Riparian Forests or Woodlands  | 17.2 Mallee - Calcareous dunefields  |
| 9.1 Rainforests  | 17.3 Mallee - Clay plains  |
| 10.1 Montane Grasslands, Shrublands or Woodlands - Shrublands or Grasslands    | 17.4 Mallee - Sandstone ridges and rises                                     |
| 10.2 Montane Grasslands, Shrublands or Woodlands - Woodlands                   | 18.1 Wetlands - Freshwater   |
| 11.1 Sub-alpine Grasslands, Shrublands or Woodlands - Shrublands or Grasslands | 18.2 Wetlands - Brackish/estuarine   |
| 11.2 Sub-alpine Grasslands, Shrublands or Woodlands - Woodlands                | 19.1 Salt-tolerant and/or succulent Shrublands - Coastal                     |
|  | 19.2 Salt-tolerant and/or succulent Shrublands - Inland                      |
|  | 20.1 Rocky Outcrop or Escarpment Scrubs                                      |
|  | Open Water   |

September 2004  
Base Data from Department of  
Sustainability and Environment  
GIS Corporate Library  
© Department of Sustainability  
and Environment  
The State of Victoria, 2004.

Disclaimer:  
This map is made using the best  
available information.  
The creators of this map do not  
warrant that it is free of error and  
do not accept liability for loss  
arising from use of this product  
beyond its original purpose.

0 100 200 300 Kilometers

