

National Drug Research Institute

Preventing Harmful Drug Use in Australia

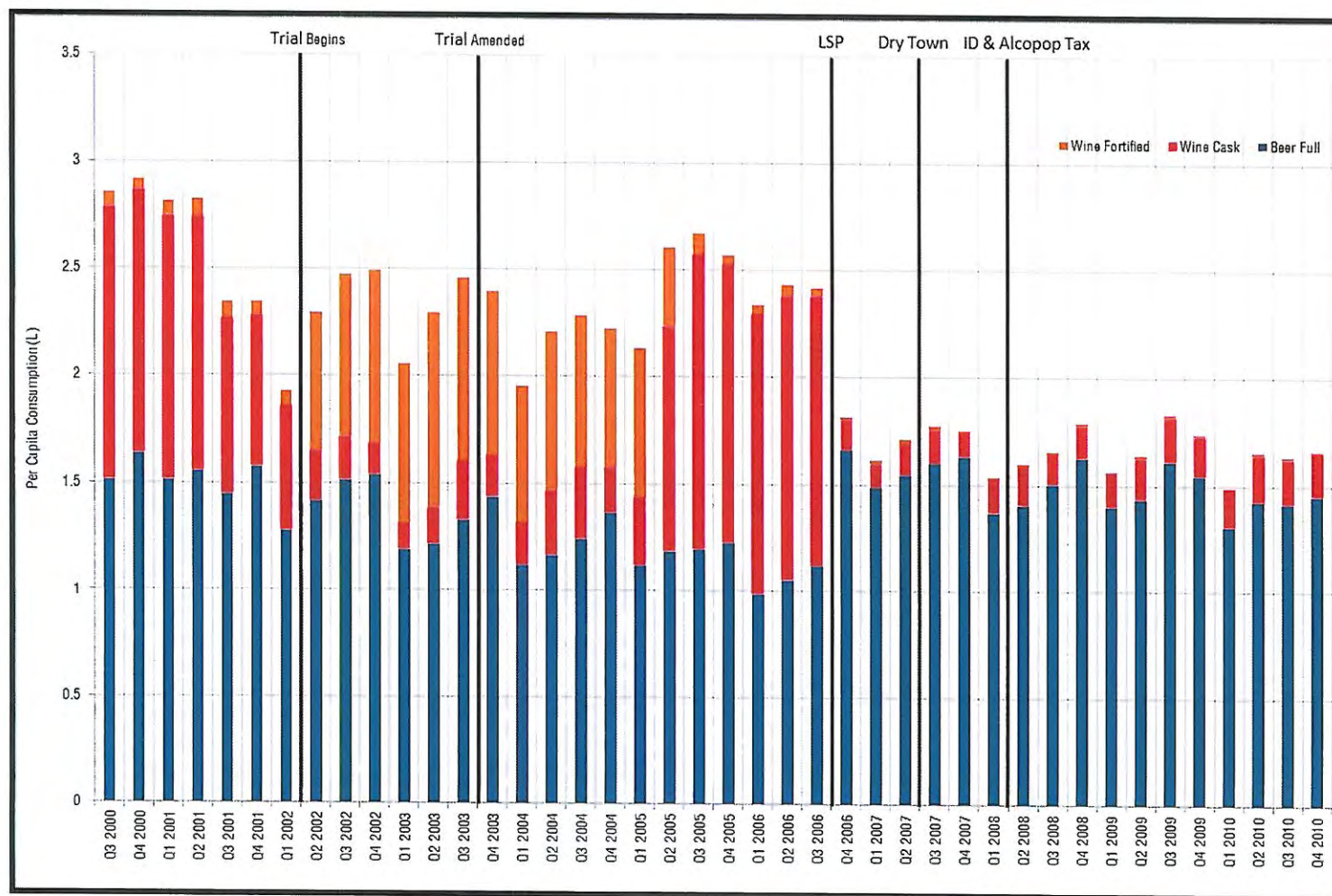


Alcohol Control Measures: Central Australia and Alice Springs

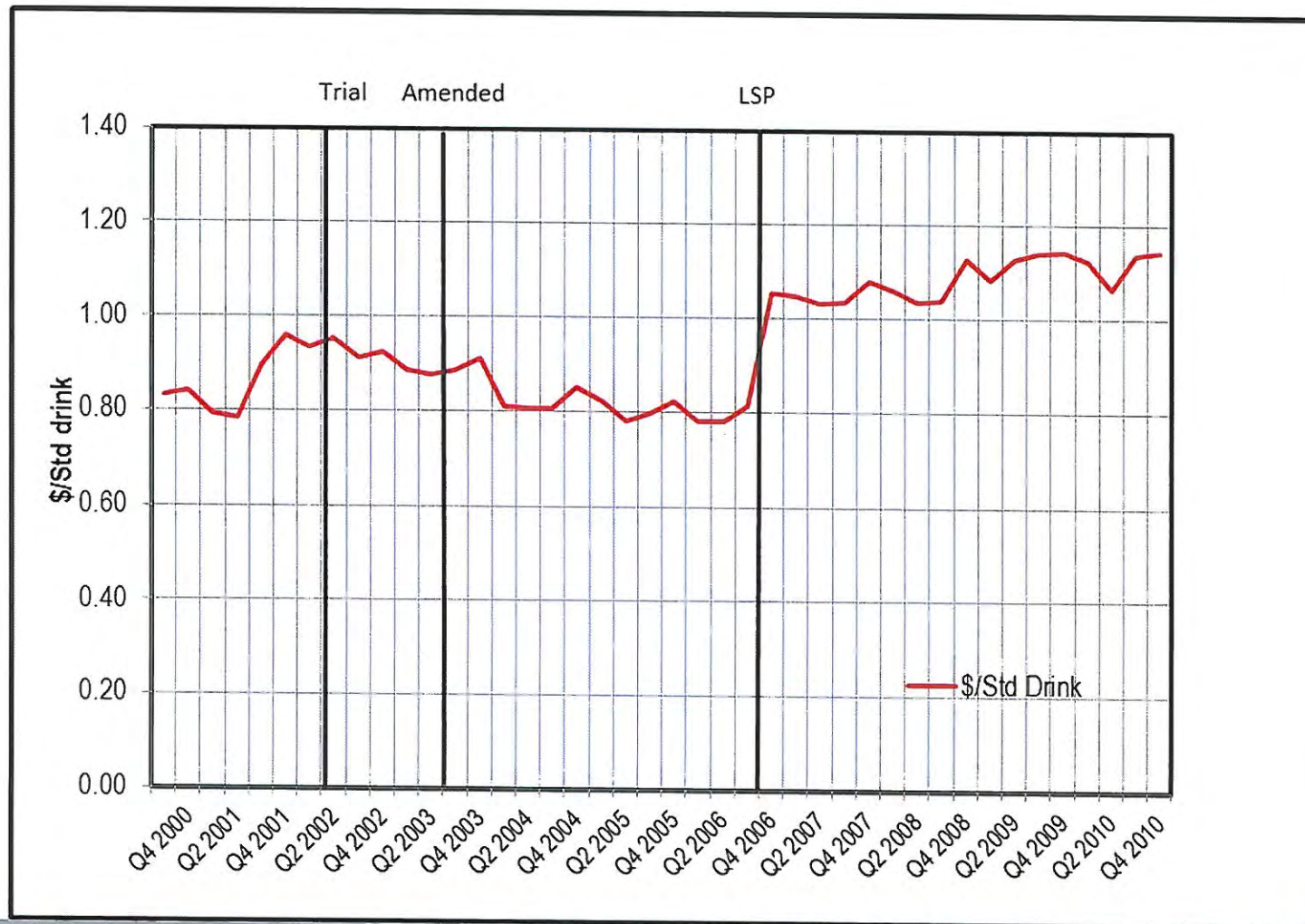
Presented by

Associate Professor John Boffa

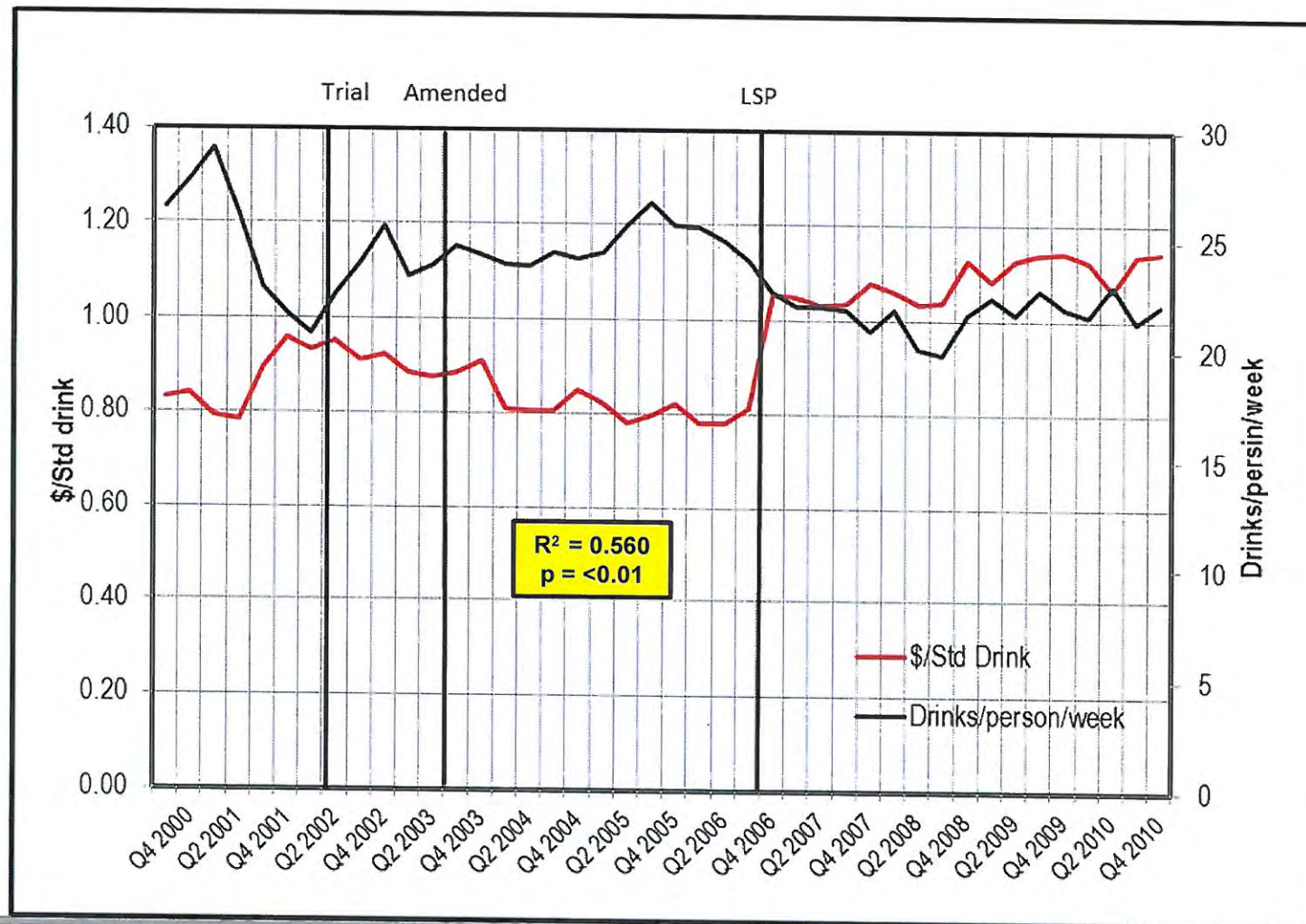
Impact of restrictions on estimated consumption of pure alcohol (litres) per person aged ≥ 15 years by key beverage types, by quarter, Central Australia, July 2000 – December 2010



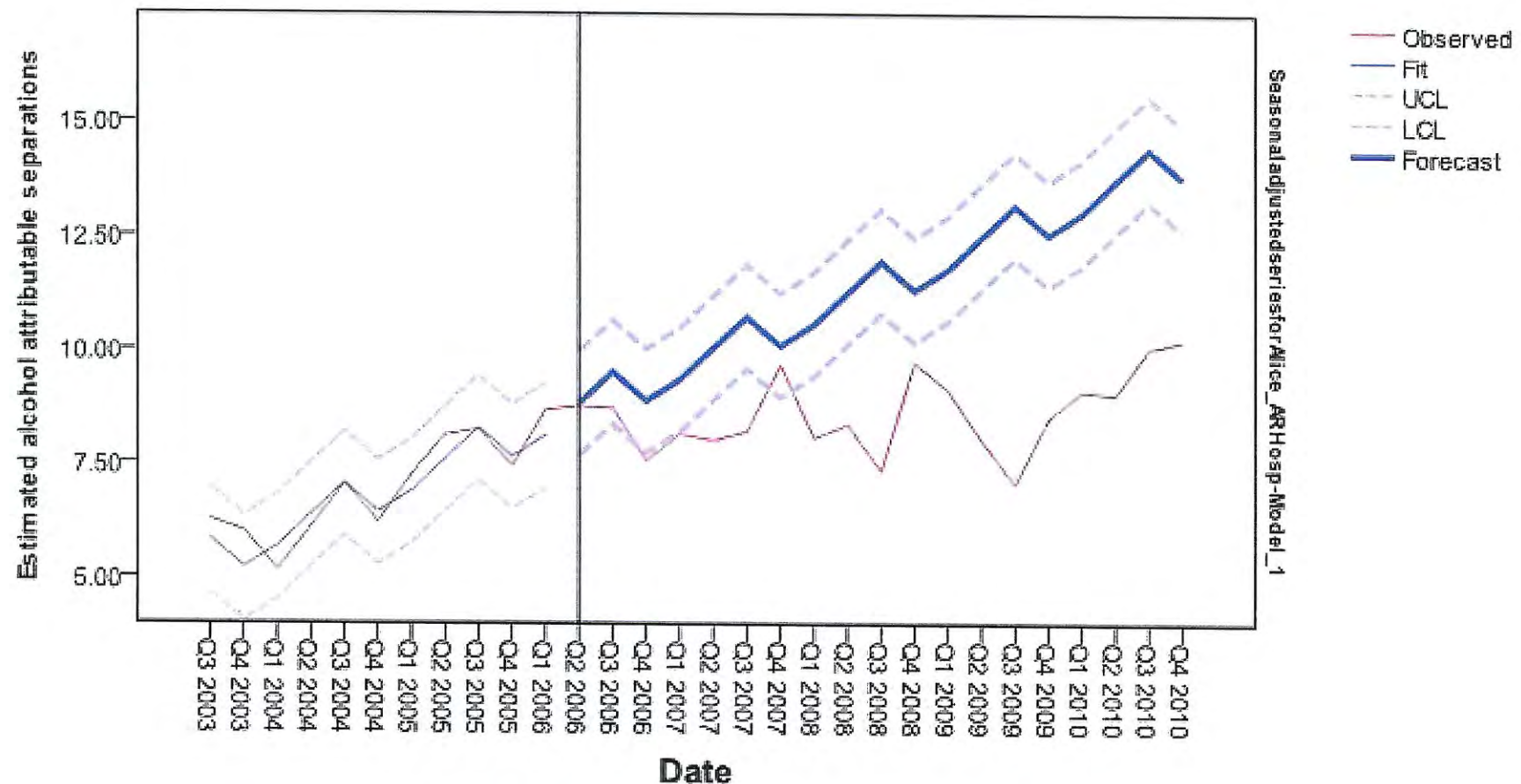
Impact of restrictions on mean wholesale price per standard drink of pure alcohol by quarter, Central Australia, July 2000 – December 2010



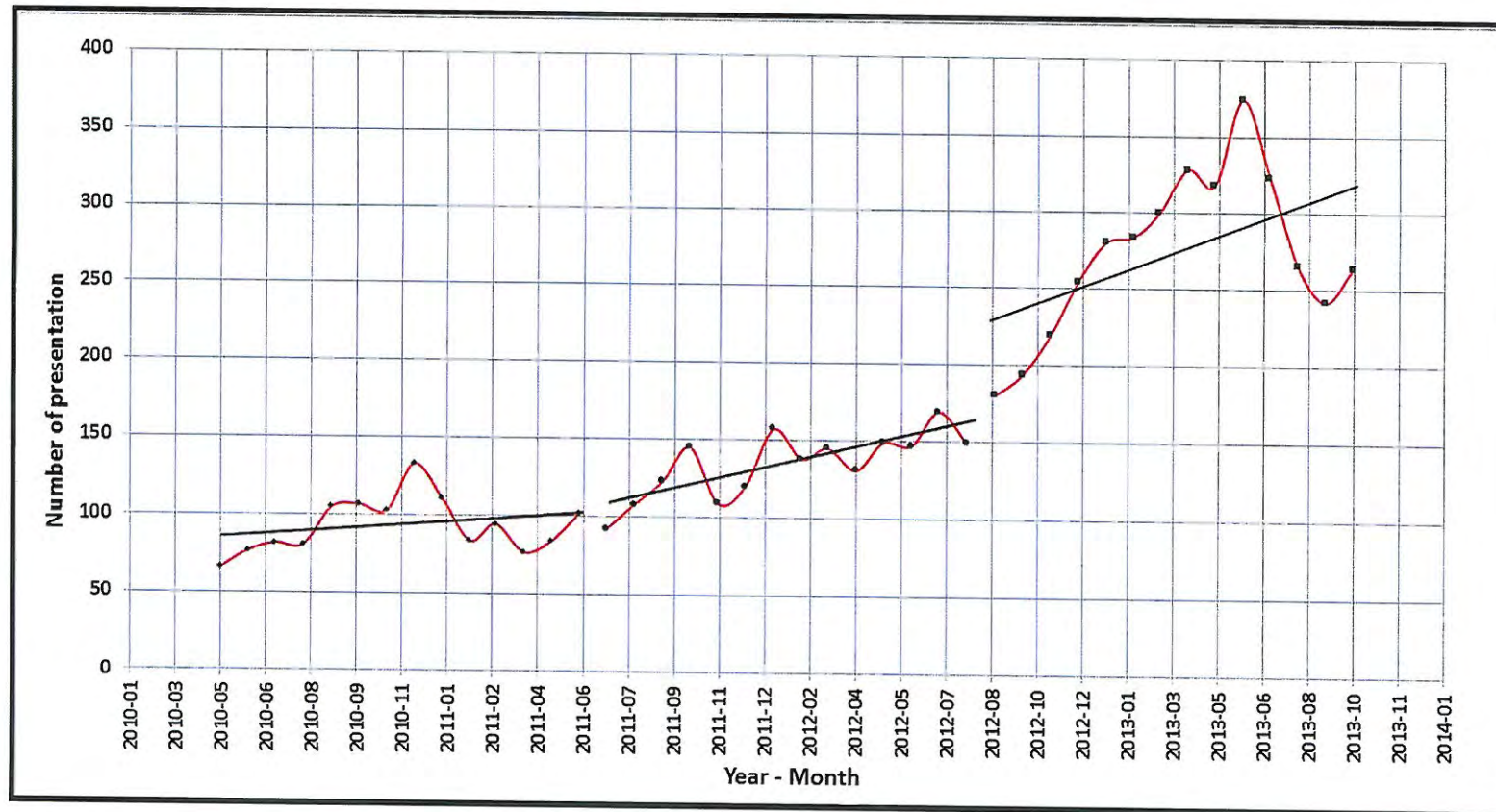
Impact of restrictions on mean wholesale price per standard drink of pure alcohol and mean weekly consumption of alcohol (standard drinks) per person ≥15 years by quarter, Central Australia, July 2000 – December 2010



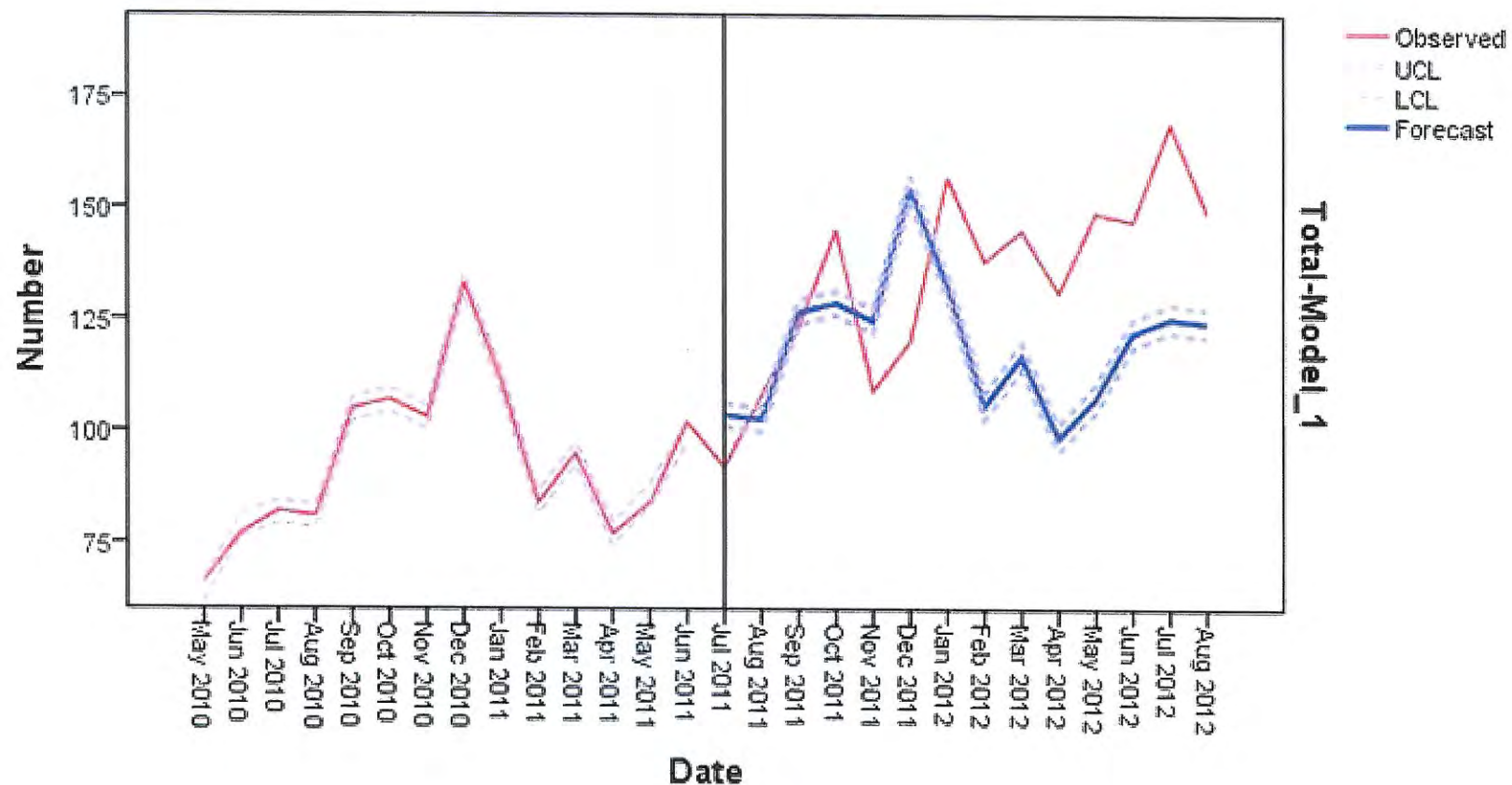
Impact of the Alice Springs Liquor Supply Plan on Alice Springs Hospital admission rates for alcohol-attributable conditions, observed and forecast values post-Q1 2006



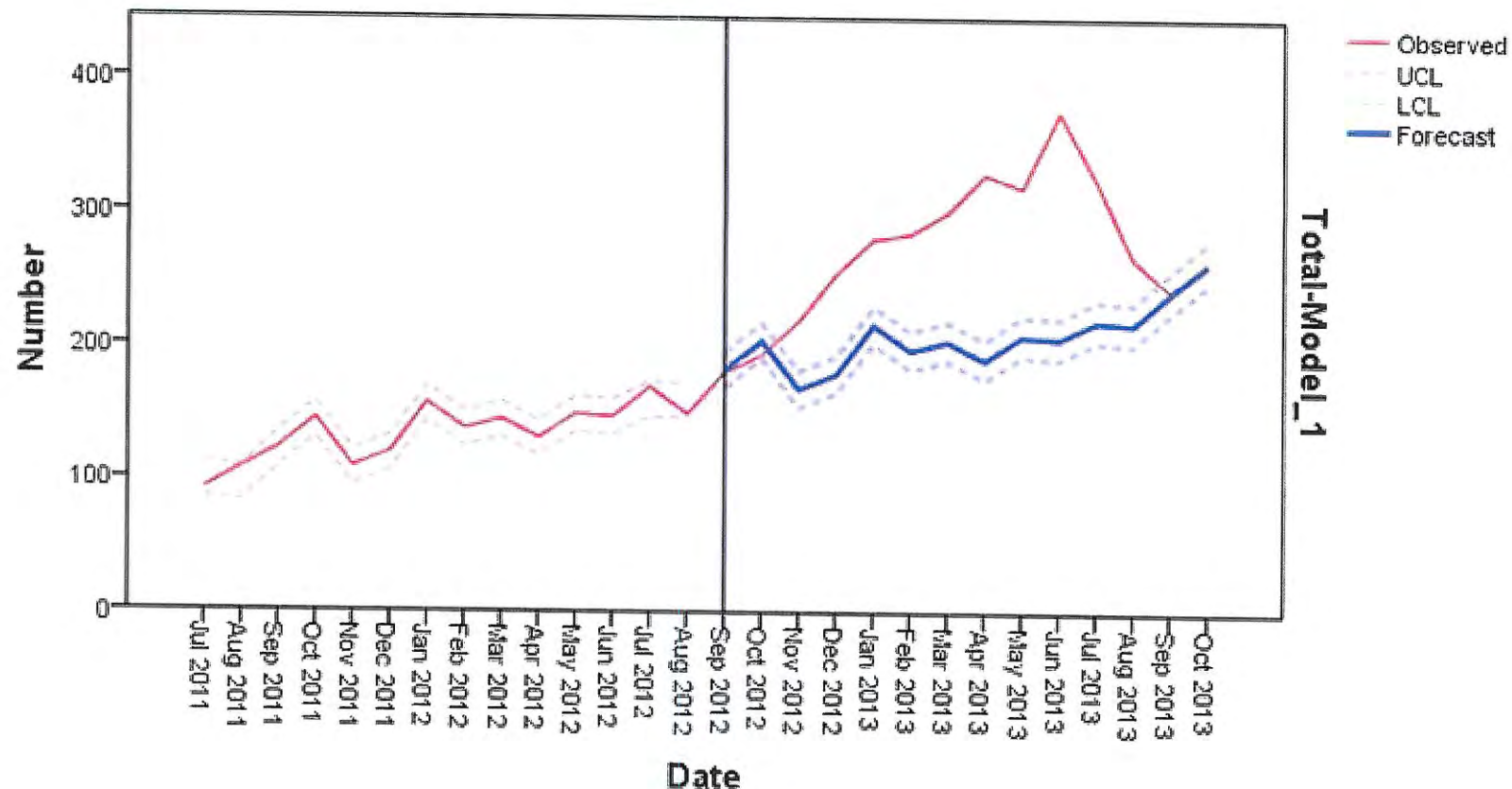
Alice Springs Hospital Emergency Department presentations for conditions wholly attributable to alcohol pre (May 2010–June 2011), during (July 2011–August 2012) and post (September 2012–October 2013) operation of the NT Banned Drinkers Register



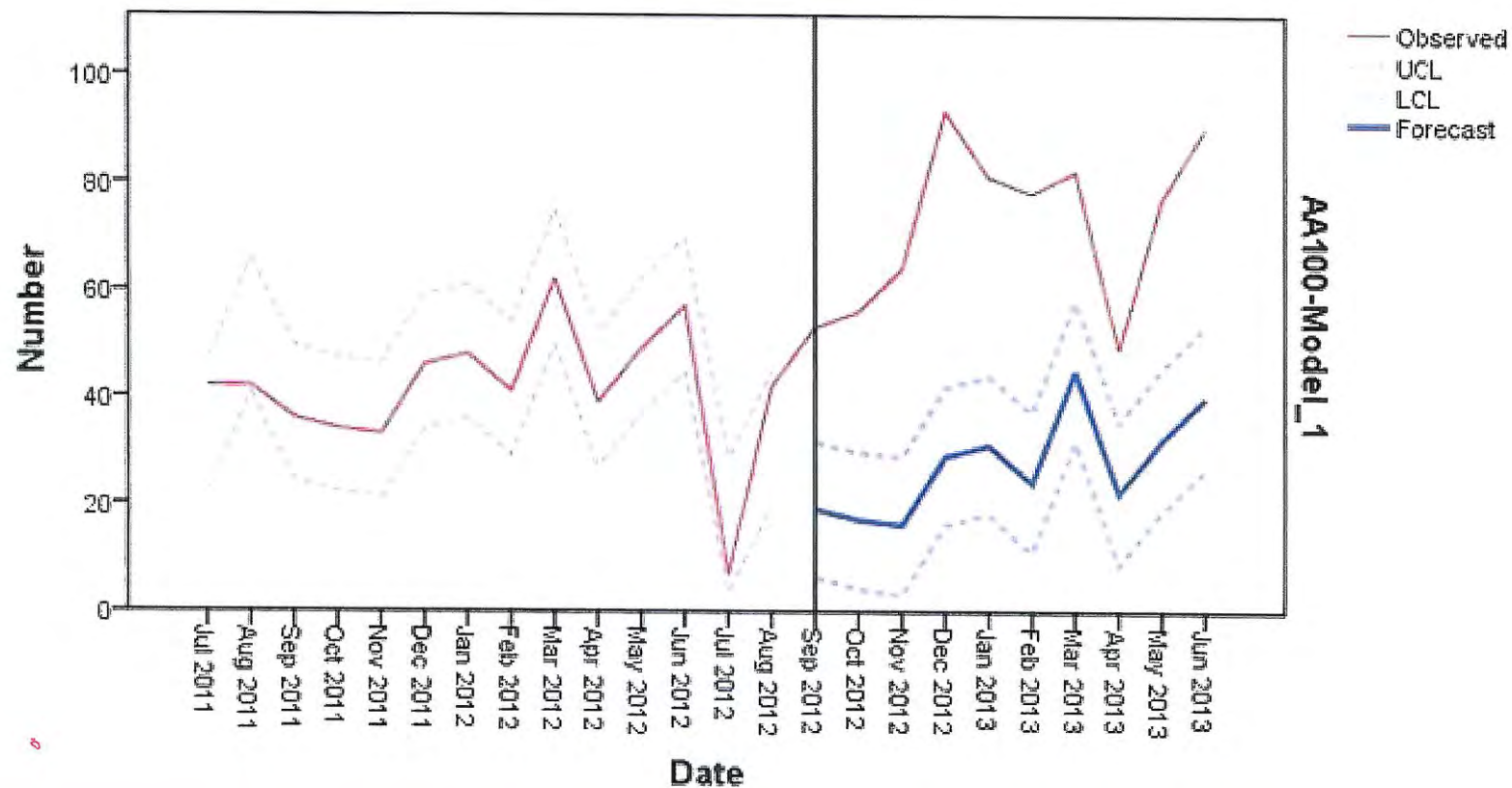
Alice Springs Hospital Emergency Department number of presentations for conditions wholly attributable to alcohol May 2010 to August 2012 and forecast numbers of admissions during operation of the NT Banned Drinkers Register (based on the series May 2010 to June 2011)



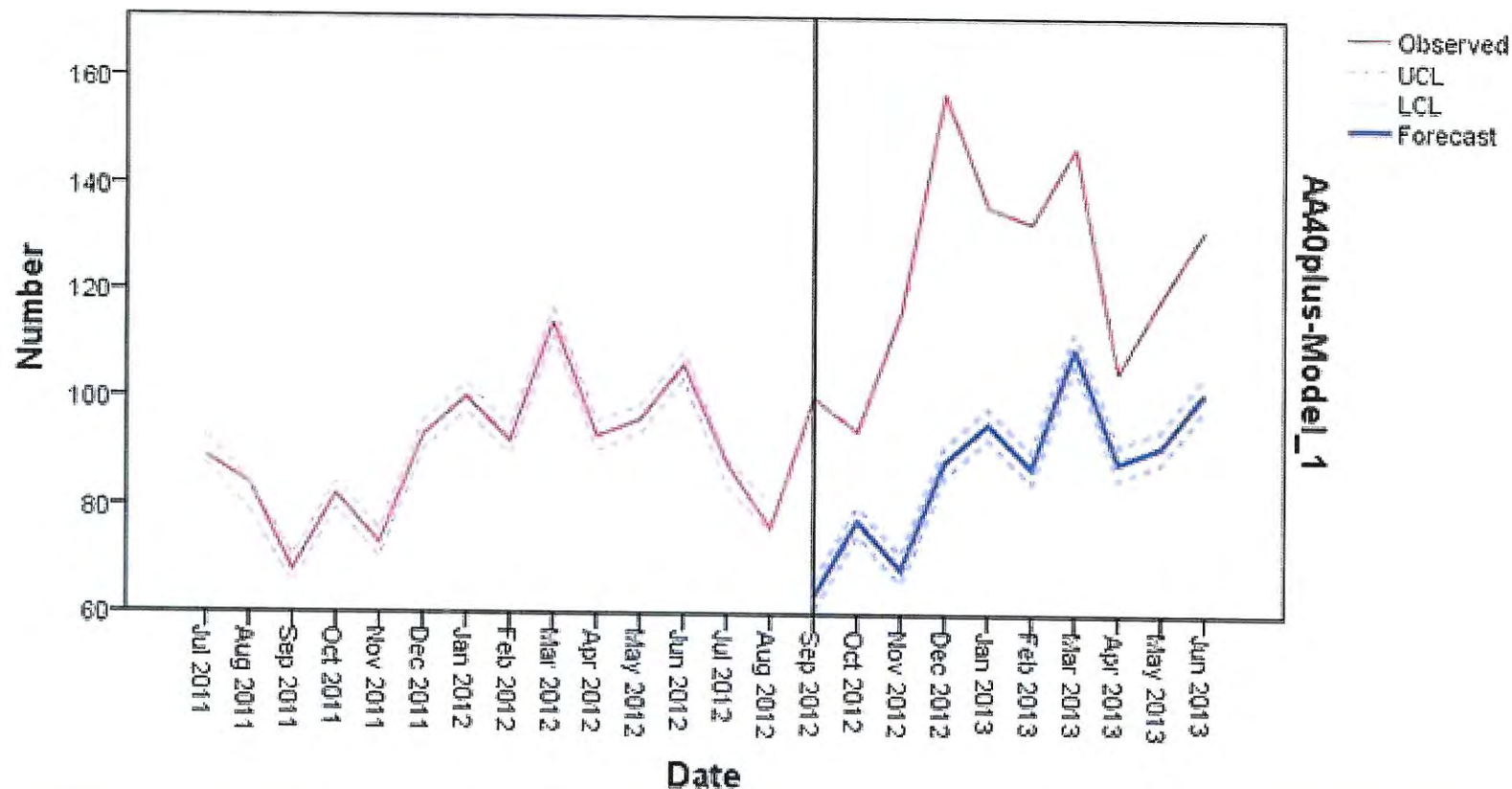
Alice Springs Hospital Emergency Department number of presentations for conditions wholly attributable to alcohol July 2011 to October 2013 and forecast numbers of admissions post-abolition of the NT Banned Drinkers Register (based on the series July 2011 August 2012)



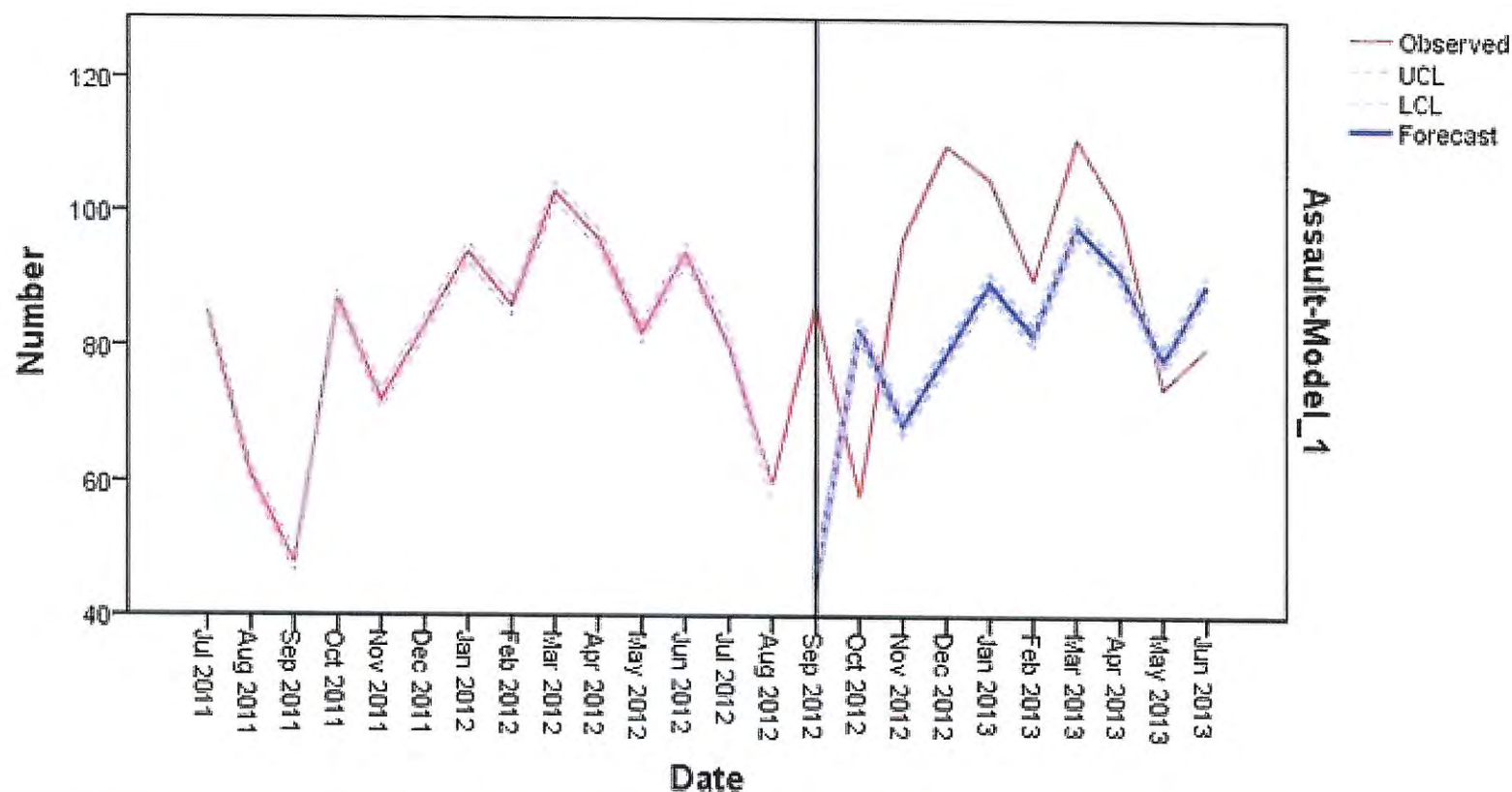
Alice Springs Hospital, number admissions for conditions wholly attributable to alcohol July 2011 to June 2013 and forecast numbers of admissions post-abolition of the NT Banned Drinkers Register (based on the series July 2011 to August 2012)



Alice Springs Hospital number of admissions for conditions with an alcohol-attributable aetiological fraction >0.4 , July 2011 to June 2013 and forecast numbers of admissions post-abolition of the NT Banned Drinkers Register (based on the series July 2011 to August 2012)



Alice Springs Hospital, number of admissions for assault injuries July 2011 to June 2013 and forecast numbers of admissions post-abolition of the NT Banned Drinkers Register (based on the series July 2011 to August 2012)



National Drug Research Institute

www.ndri.curtin.edu.au