



2010 Over a dozen stags destroyed on this 1 coupe a site of National Conservation significance- an identified koala site



2009_Mixed forest prime Koala feed removed



2009_Harvesting of native forests grey gum and manna identified site of stable Koala population



2010 Clearfell known Koala site including stands of old growth



2010 Destruction of koala habitat and biolinks



Continued destruction of prime koala habitat



Cutting and poisoning of Globulus regeneration post one off harvest



Thwaites' gift to Victoria the Cores and Links 13 October 2006

Attachment 2
Extracts from
Victorian 2009 February Fires Report by Chris Taylor A Report on Driving Influences and Land Tenures.

The severity of the January and February 2009 in the Strzeleckis was catastrophic to both the human and animal populations. The horror of those days was unimaginable the death of friends and families still haunts large numbers of people 2 years on.

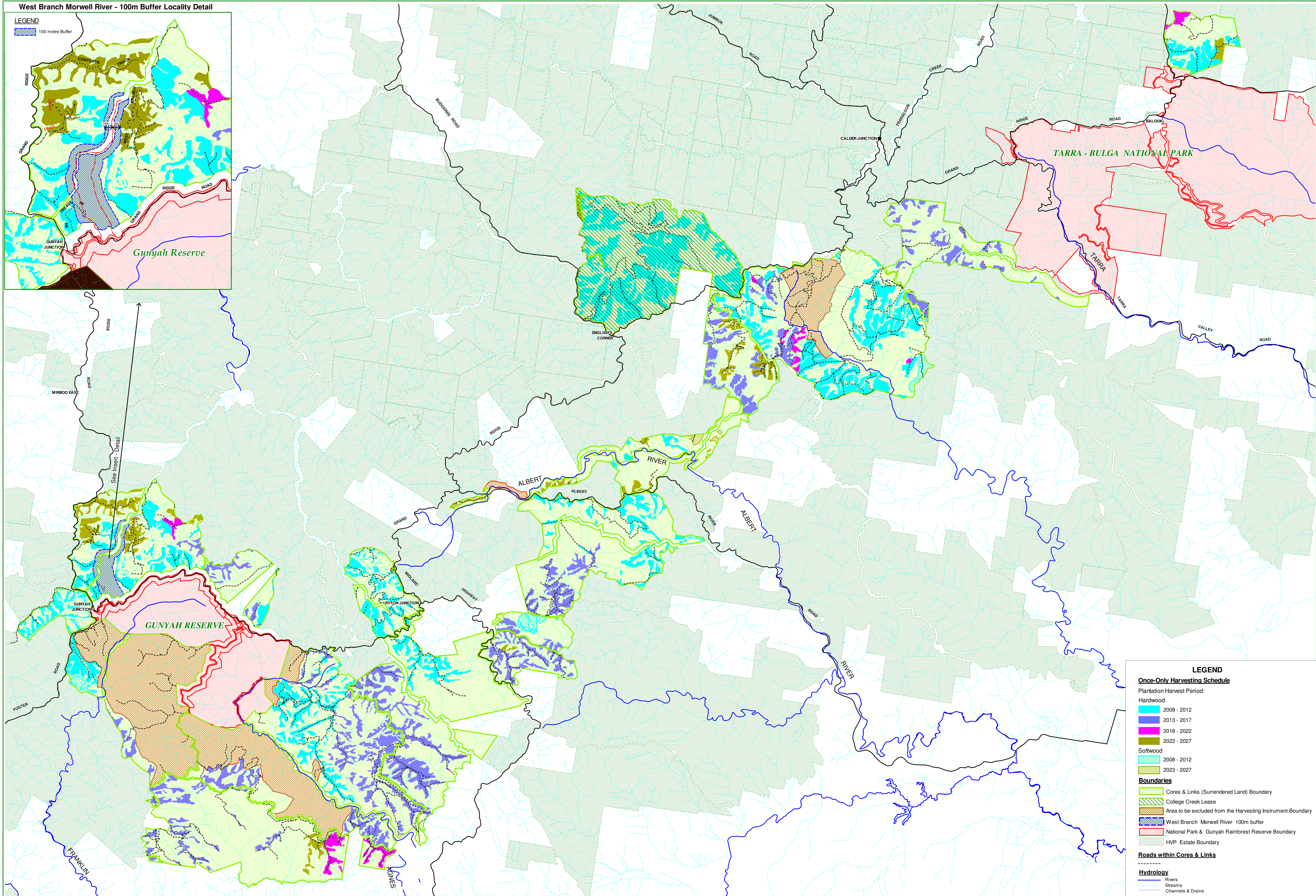
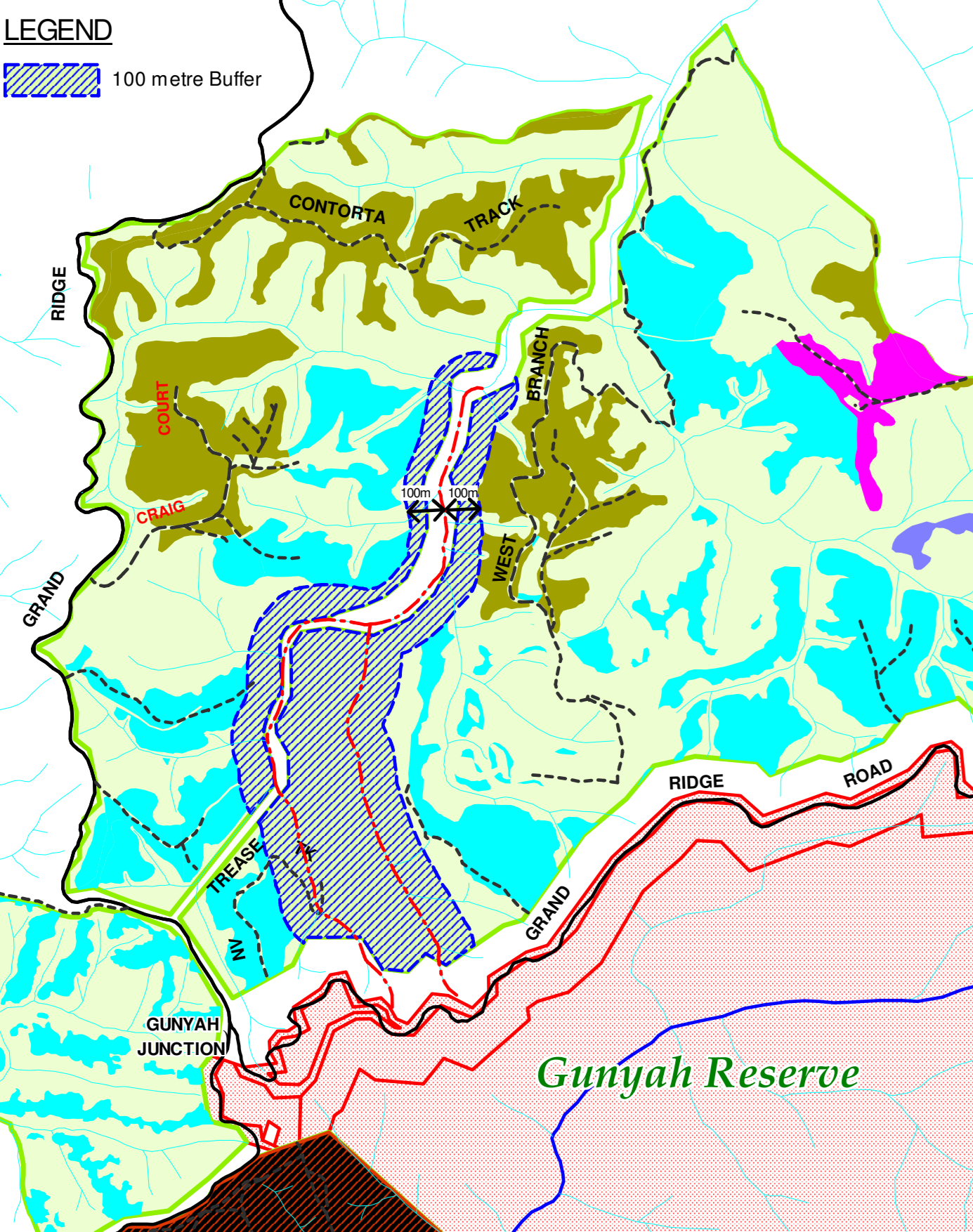
I have made reference to the above report as it displays excellent maps and text covering the areas of destruction which included huge tracts of prime koala habitat.

Section 5.5 Churchill Fires Map 5.7 Overview of area affected by Fires on 7th February 2009
page 47

Map 5.8 Severity of the Churchill Fire page 48

Section 5.5.7 Areas affected by the Churchill Fire page 53

Section 6 Delburn Fire Land Tenure Area Affected 47% plantation



LEGEND

Once-Only Harvesting Schedule

Plantation Harvest Period:

Hardwood

- 2008 - 2012
- 2013 - 2017
- 2018 - 2022
- 2023 - 2027

Softwood

- 2008 - 2012
- 2023 - 2027

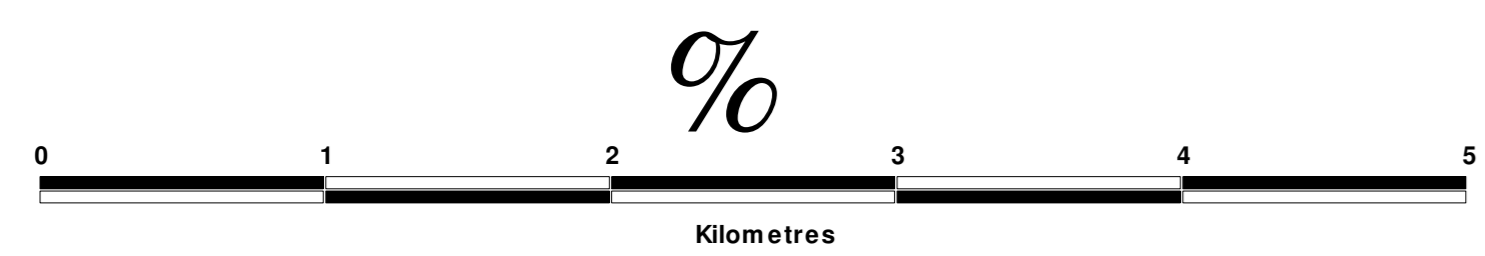
Boundaries

- Cores & Links (Surrendered Land) Boundary
- College Creek Lease
- Area to be excluded from the Harvesting Instrument Boundary
- West Branch Morwell River 100m buffer
- National Park & Gonyah Rainforest Reserve Boundary
- HVP Estate Boundary

Roads within Cores & Links

Hydrology

- Rivers
- Streams
- Channels & Drains



Cores & Links Harvesting Schedule

Prepared by JRD - HVP planning - 24.07.08
M. Crookall - G.L. analysis - 04.08.08
Post press release Maps for Govt 300508 Draft maps/Draft Maps to Melbourne Final maps