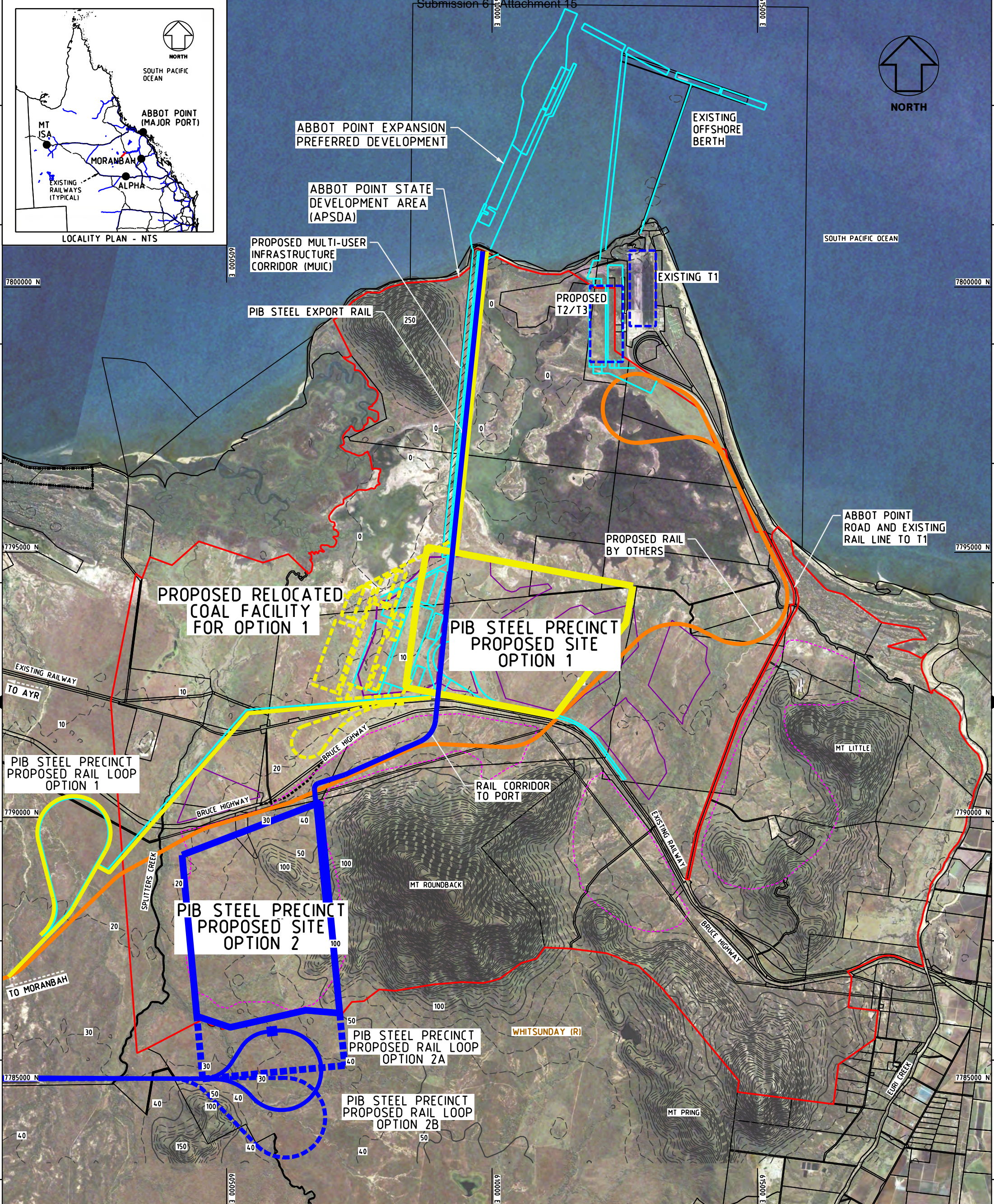
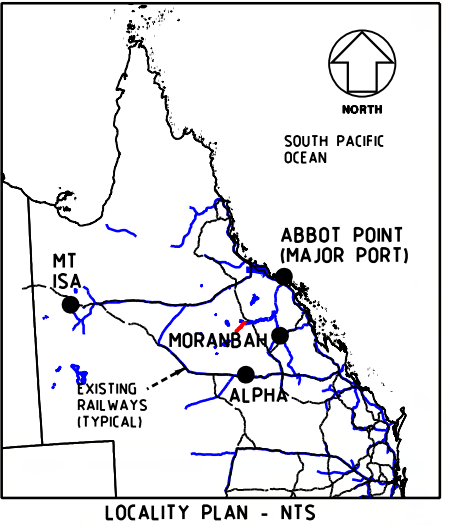


# Appendix 15



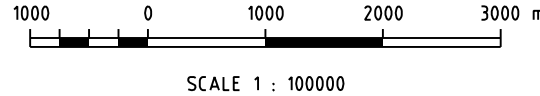


**LEGEND:**

PIB OPTION 1 CONCEPT	
PIB OPTION 2 CONCEPT	
ABBOT POINT PROPOSED EXPANSION	
PROPOSED ALT ABBOT POINT EXPANSION	

BASED ON OR CONTAINS DATA PROVIDED BY THE STATE OF QLD (DERM) (2010), IN CONSIDERATION OF THE STATE PERMITTING USE OF THIS DATA YOU ACKNOWLEDGE AND AGREE THAT THE STATE GIVES NO WARRANTY IN RELATION TO THE DATA (INCLUDING ACCURACY, RELIABILITY, COMPLETENESS, CURRENCY OR SUITABILITY) AND ACCEPTS NO LIABILITY (INCLUDING WITHOUT LIMITATION, LIABILITY IN NEGLIGENCE) FOR ANY LOSS, DAMAGE OR COSTS (INCLUDING CONSEQUENTIAL DAMAGE) RELATING TO ANY USE OF THE DATA. DATA MUST NOT BE USED FOR MARKETING OR BE USED IN BREACH OF THE PRIVACY LAWS.

NOTE:  
ABBOT POINT STATE DEVELOPMENT AREA (APSDA)  
ABBOT POINT EXPANSION AP-X PROJECT  
DRAWING NUMBER 227194-G-1094



This drawing and all the information contained on it remains the property of Engenium Pty Ltd. It is confidential and is issued on the condition that, except with written permission from Engenium Pty Ltd, it must not be copied, reproduced viewed or communicated to any other party, nor shall it be used for any purpose other than that stated on the particular contract, order, enquiry with which it is issued. Any such authorised disclosure is subject to the party agreeing to be bound by these confidentiality obligations. Any copies or extracts of this information must contain this clause and must be returned upon request by Engenium Pty Ltd.

REV	DATE	DRN	DESCRIPTION	(CHKD)	(APPR)	(PROJ)
A	14.02.13	BC	ISSUED FOR INFORMATION			
DRAWING REVISION						

DRAWN BY	DATE	NAME
CHECKED BY		
APPROVED BY		
ENG MGR		

**engenium**  
Level 8, 710 St Georges Tce  
Perth WA 6000 Australia  
ABN 52 105 152 994  
Tel: +61 8 6445 7777  
Fax: +61 8 6445 7799

**EAST WEST LINE PARKS LIMITED**  
**PROJECT IRON BOOMERANG**  
**GENERAL ARRANGEMENT - ABBOT POINT**  
**STEEL PARK LOCALITY CONCEPT PLAN**

DRAWING No. **PIB-SKE-G-0042 - FIGURE 1** REV. **A**