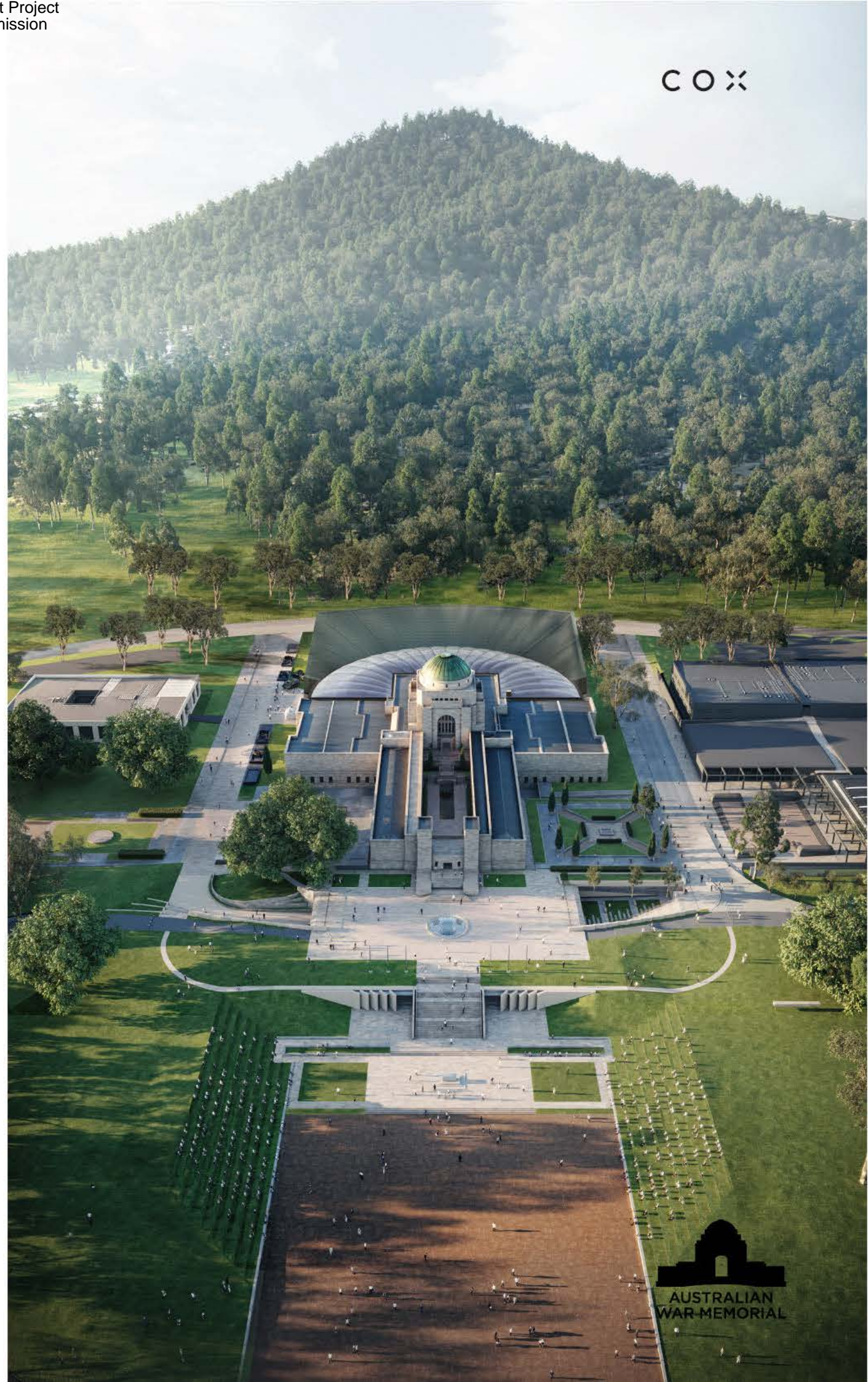


ATTACHMENT A – Overall Site

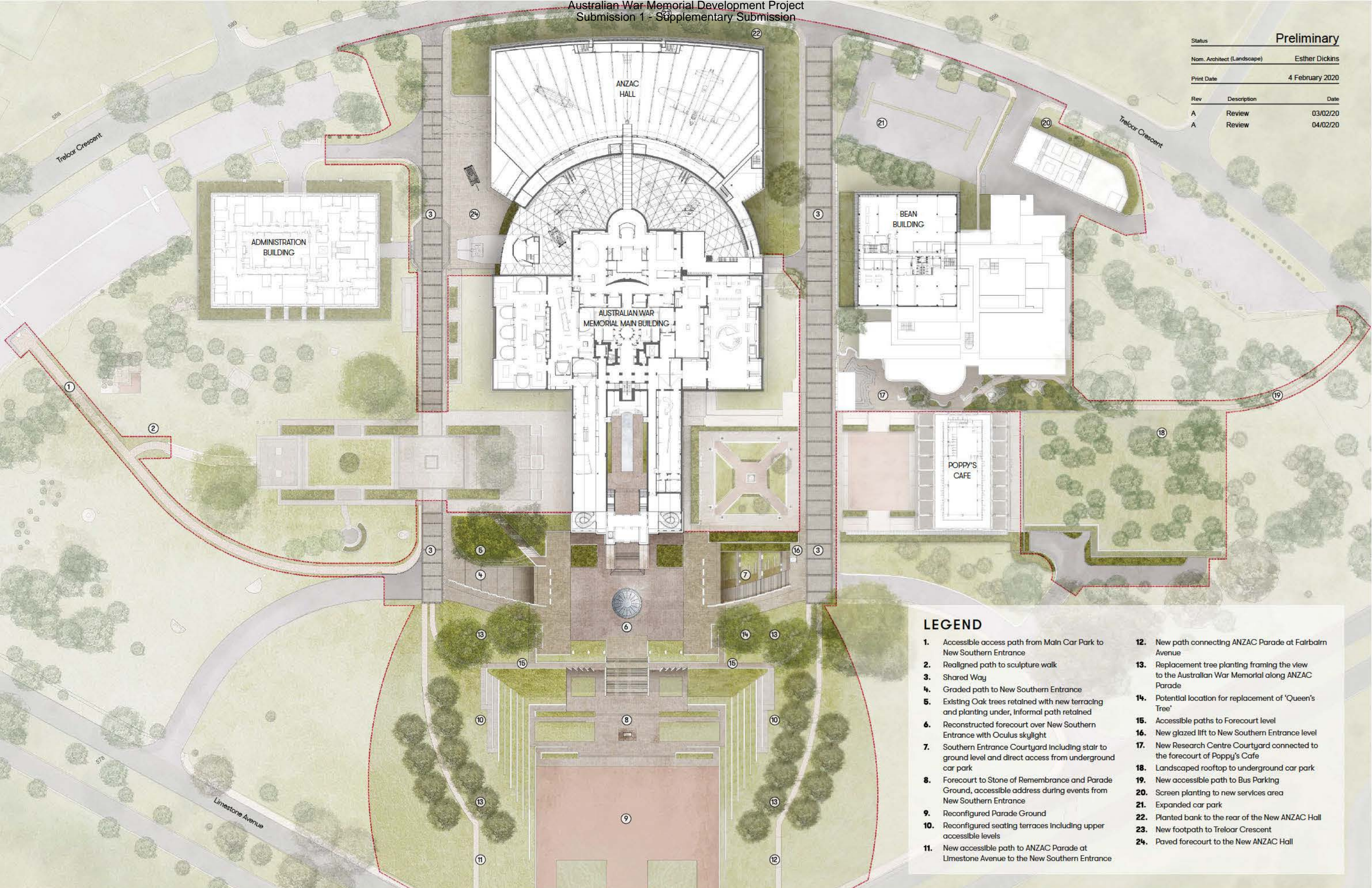
Perspective 1 – View of Overall Development from Anzac Parade

Drawing SK005(A) – Public Realm Plan

1 - View of Overall Development from Anzac Parade



Status	Preliminary	
Nom. Architect (Landscape)	Esther Dickins	
Print Date	4 February 2020	
Rev	Description	Date
A	Review	03/02/20
A	Review	04/02/20



LEGEND

- | | |
|---|---|
| <ul style="list-style-type: none"> 1. Accessible access path from Main Car Park to New Southern Entrance 2. Realigned path to sculpture walk 3. Shared Way 4. Graded path to New Southern Entrance 5. Existing Oak trees retained with new terracing and planting under, Informal path retained 6. Reconstructed forecourt over New Southern Entrance with Oculus skylight 7. Southern Entrance Courtyard including stair to ground level and direct access from underground car park 8. Forecourt to Stone of Remembrance and Parade Ground, accessible address during events from New Southern Entrance 9. Reconfigured Parade Ground 10. Reconfigured seating terraces including upper accessible levels 11. New accessible path to ANZAC Parade at Limestone Avenue to the New Southern Entrance | <ul style="list-style-type: none"> 12. New path connecting ANZAC Parade at Fairbairn Avenue 13. Replacement tree planting framing the view to the Australian War Memorial along ANZAC Parade 14. Potential location for replacement of 'Queen's Tree' 15. Accessible paths to Forecourt level 16. New glazed lift to New Southern Entrance level 17. New Research Centre Courtyard connected to the forecourt of Poppy's Cafe 18. Landscaped rooftop to underground car park 19. New accessible path to Bus Parking 20. Screen planting to new services area 21. Expanded car park 22. Planted bank to the rear of the New ANZAC Hall 23. New footpath to Treloar Crescent 24. Paved forecourt to the New ANZAC Hall |
|---|---|

