

3 Documents tabled by Tasmania Fire Service
Wed 4 February 2015 Hobart.

Your guide to using the Community Bushfire Response Plan

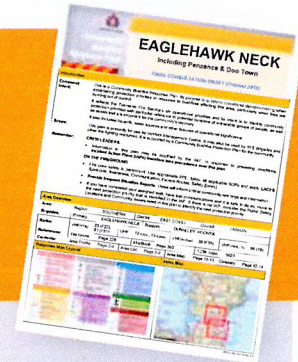


Tasmania
Fire Service



GET your local Community Bushfire Response Plans

A detailed plan for firefighters and emergency managers containing **public safety priorities, hazards, community assets and operational features.**



VISIT www.fire.tas.gov.au members area

FREECALL **1800 000 699**



REVIEW your local Community Bushfire Response Plans



Know your area's Nearby Safer Places

- A place of **LAST RESORT** during a bushfire emergency
- A place **CLOSE BY** that gives shelter from radiant heat
- **NOT** without Risk
- People **WILL** gather here and may need protecting
- **NOT** your only option
- A **SAFETY OPTION** for firefighters

Identify Vulnerable Group Locations

- The places with potential Life Risk

Identify Community Assets

- The assets to protect as a priority

Identify firefighting Water Sources

- Access to reticulated and static supplies

Identify potential Hazards

- Access to reticulated and static supplies



USE your local Community Bushfire Response Plans when responding to bushfires

- Assist operational decision making
- Inform Incident Action Plans
- A critical resource for Incident

FREE CALL **1800 000 699** EMAIL planning@fire.tas.gov.au VISIT www.fire.tas.gov.au



WHEN BUSHFIRES ARE BURNING OUT OF CONTROL – REMEMBER OUR PRIORITIES!

- 1. Issue warnings**
- 2. Protect vulnerable people**
- 3. Protect valuable community assets**
- 4. Stop building to building ignitions**
- 5. Protect other community assets**
- 6. Focus on firefighting once conditions moderate**

SAFETY COMES FIRST!



Tasmania Fire Service



YOUR GUIDE TO:

Community Bushfire Protection Plans

1. GET



Get your local Community Bushfire Protection Plan

A simple plan for community members containing **bushfire safety options** and **bushfire information**.

Download your Community Bushfire Protection Plan (where available) from the TFS website:
VISIT www.fire.tas.gov.au

Request a printed copy:
FREECALL **1800 000 699**

2. READ



Read your Community Bushfire Protection Plan

assess your options

identify your risks



3. USE



Use your Community Bushfire Protection Plan to develop a bushfire survival plan

 Know your Nearby Safer Places

Know your nearest and safest Exit Routes

Know your local Emergency Broadcaster

Seek further Bushfire Safety Advice

Free **Bushfire Survival Plan** booklet & DVD available at www.fire.tas.gov.au or freecall **1800 000 699**

4. KEEP



Keep your Community Bushfire Protection Plan in an easily accessible location – it may save your life

FREE CALL
1800 000 699

EMAIL
planning@fire.tas.gov.au

VISIT
www.fire.tas.gov.au



Tasmanian Government



Tasmania Fire Service



In an emergency dial triple zero 000 or if a TTY user call 106

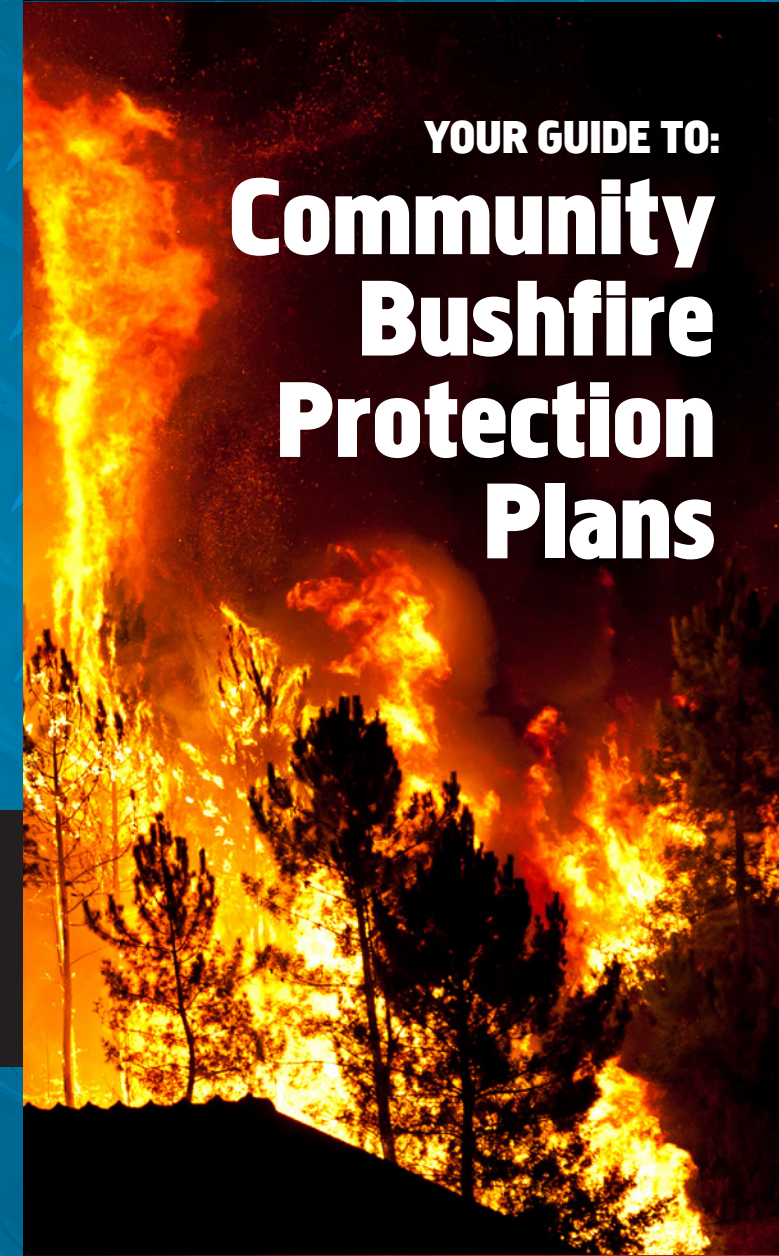
While the State Fire Commission has made every effort to ensure the accuracy and reliability of the information contained in this booklet, the State Fire Commission does not accept any responsibility for the accuracy, completeness, or relevance to the reader's purpose, of the information contained in this booklet and those reading it for whatever purpose are advised to verify its accuracy and to obtain appropriate professional advice. The State Fire Commission, its officers, employees and agents do not accept any liability, however arising, including liability for negligence, for any loss or damage resulting from the use of, or reliance upon, the information contained in this brochure. © Copyright Tasmania Fire Service 2013 140988 V2.0/14



Tasmania Fire Service

YOUR GUIDE TO:

Community Bushfire Protection Plans



PREPARE • ACT • SURVIVE

Community Protection Planning

An innovative, and national award winning emergency management, community protection and resilience building initiative.

Community protection planning is working with communities, stakeholders and partner agencies in the development and implementation of these community-level plans:



Strategic plans that focus on addressing bushfire hazards and improving survivability of communities and assets. These plans identify areas for fuel treatment, and guide prescribed burning and asset protection work.



Plans for emergency managers and responders to better protect communities and their assets during bushfire emergencies. These plans identify protection priorities, making firefighting resources safer and more effective.



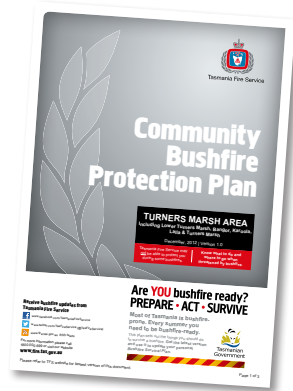
Plans for community members that provide local information to assist with bushfire preparation, and survival. These plans help you to make your bushfire survival plan.

Visit www.fire.tas.gov.au for more information on these plans.

What is a Community Bushfire Protection Plan?

A Community Bushfire Protection Plan aims to assist individuals with the development of personal *Bushfire Survival Plans* by providing local advice on:

- Safety options for surviving a bushfire, including the location of nearby safer places
- Communications for receiving emergency warnings and bushfire updates
- Safe access in and out of the community area
- Advice on what to do to prepare and survive a bushfire
- How and where to source additional bushfire safety information



Evacuation Centres (formally Community Fire Refuges)

An Evacuation Centre is:

- a shelter for people who leave bushfire affected areas
- a building that offers amenities including drinking water, and toilet facilities
- a location that is advertised via ABC Local Radio & Tasmania Fire Service Website

NSP Nearby Safer Places

If you live in or near the bush, you need to make a bushfire survival plan. Your plan needs to include places you can shelter at, in case you cannot carry out your preferred plan. 'Nearby safer places' are places you can shelter at during bushfires.

A nearby safer place:

- Should not be your only option – it is a place of last resort.
- Should be near your home, but getting to it and sheltering at it will not be without risk.

Tasmania Fire Service identifies some nearby safer places and lists these in Community Bushfire Protection Plans, which are available at www.fire.tas.gov.au or freecall **1800 000 699**.

Even if there are nearby safer places listed in your community protection plan, you should identify others in your survival plan in case you can't get to the ones identified by Tasmania Fire Service.

In some communities Tasmania Fire Service may not be able to identify any nearby safer places. So if you haven't prepared your property to be defended against intense bushfires, and haven't identified nearby safer places, you should plan to leave your community as soon as bushfire threatens.



Selecting your own Nearby Safer Place

You should identify your own nearby safer places in addition to those identified by Tasmania Fire Service. This table can be used to assist in selecting a personal nearby safer place.

		NSP Setback Distance (metres)		
		Heavy Forest	Light Forest or Scrub	Grassland
Slope (degrees)	Flat	95	70	40
		225	175	80
	5	110	85	45
		260	200	90
	10	130	100	55
		305	235	100
	15	155	120	60
		360	280	110
20	185	140	65	
	425	330	120	

Red a building Green open space

NSP setback distance: refers to the amount of clear space required between the NSP site (a building or an open space) and the bushfire hazard (vegetation). This must be a clear or maintained space (e.g. mown grass, sand, gravel).

Slope: refers to the steepness (or gradient) of the land under the vegetation measured in degrees.

Heavy forest: canopy trees more than 10 meters high, with understorey scrub or small trees. Difficult to walk through in a straight line.

Light Forest: sparse canopy trees, open scrub understorey, often grassy. Not difficult to walk through in a straight line.

Scrub: no canopy trees. Shrubs ranging in height, often dense, difficult to walk through.

Grassland: agricultural land, native grassland, tussock, low heath land.

For more information on selecting your own nearby safer place visit www.fire.tas.gov.au or freecall **1800 000 699**.