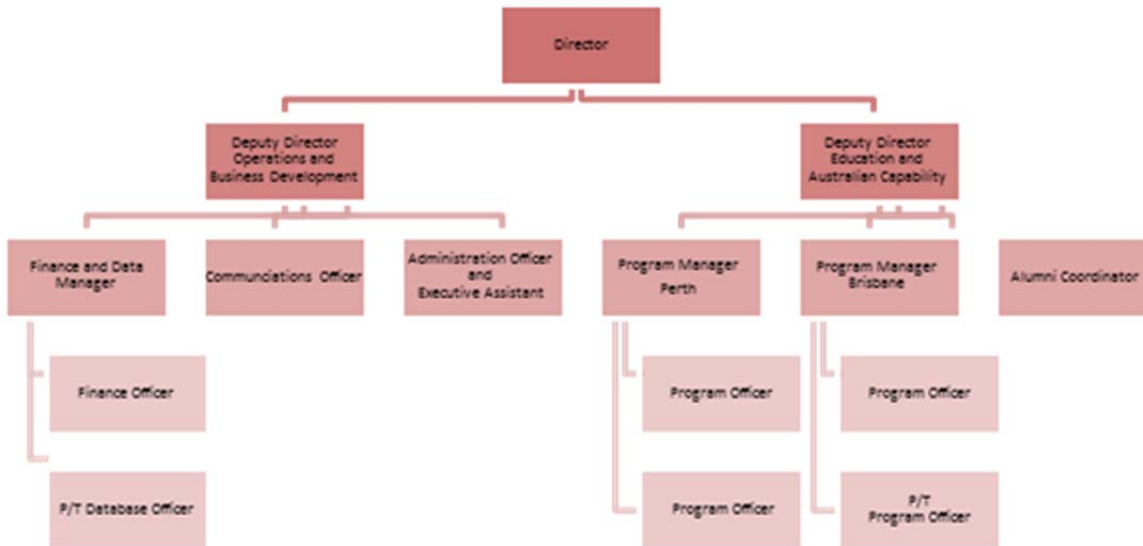


Response to Question on Notice from International Mining Development Centre

IM4DC staffing



International Mining for Development Centre

FUNDED BY

Australian Government
Department of Foreign Affairs and Trade

Australian Aid

IMPLEMENTING PARTNERS

THE UNIVERSITY OF QUEENSLAND AUSTRALIA

THE UNIVERSITY OF WESTERN AUSTRALIA