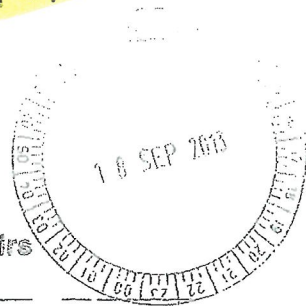


SSPRA



Hon Peter Collier MLC
Minister for Education; Aboriginal Affairs; Electoral Affairs
Leader of the Government in the Legislative Council

Our Ref: 34-28169

Hon Ken Travers MLC
Chair
Standing Committee on Estimates and Financial Operations
Parliament House
PERTH WA 6000

Attention: Samantha Parsons
Committee Clerk

Dear Mr Travers

**QUESTIONS ON NOTICE – 2013/14 LEGISLATIVE COUNCIL ESTIMATES
HEARINGS**

Please find attached responses to the questions on notice submitted by Members of the Legislative Council.

This information meets my approval.

Kind regards

Hon Peter Collier MLC
MINISTER FOR EDUCATION

Att.

ESTIMATES AND FINANCIAL OPERATIONS COMMITTEE
QUESTIONS ON NOTICE SUPPLEMENTARY INFORMATION

Tuesday, 24 September 2013

Department of Education

Question No. 1: Hon Sue Ellery MLC asked –

I refer to the Department of Education budget and subsequent announcement of a major overhaul of public school funding and ask for each public school in WA –

What is the projected student enrolment for February 2014 as entered 30 August 2013?

Answer: The projected student enrolment for February 2014 as submitted 30 August 2013 by Principals is provided in Attachment 1. Those schools with a zero value in the enrolment column did not submit projected enrolments as requested on 30 August 2013.

School Name	Projected Student Enrolment for Feb 2014, as at 30 August 2013
ALBANY PS	505
ALBANY SECONDARY ESC	33
ALBANY SHS	980
BORDEN PS	23
CRANBROOK PS	75
DENMARK - WA COLLEGE OF AGRICULTURE	107
DENMARK HIGH SCHOOL	336
DENMARK PS	509
FLINDERS PARK PS	510
FRANKLAND RIVER PS	53
GAIRDNER PS	55
GNOWANGERUP DHS	144
JERRAMUNGUP DHS	97
KENDENUP PS	105
KOJONUP DHS	243
LITTLE GROVE PS	217
LOCKYER COMMUNITY KINDERGARTEN	0
LOWER KING COMMUNITY KINDERGARTEN	0
MOUNT BARKER COMMUNITY COLLEGE	684
MOUNT LOCKYER PS	539
MOUNT MANYPEAKS PS	29
NEWDEGATE PS	57
NORTH ALBANY SHS	487
ONGERUP PS	27
SOUTH STIRLING PS	22
SPENCER PARK ESC	25
SPENCER PARK PS	422
TAMBELLUP PS	97
WALPOLE PS	87
WELLSTEAD PS	27
YAKAMIA PS	543
ADAM ROAD PS	553
ALLANSON PS	115
AMAROO PS	440
AUSTRALIND PS	324
AUSTRALIND SHS	1,027
BOYANUP PS	136
BRUNSWICK JUNCT PS	92
BUNBURY PS	459
BUNBURY SHS	750
CAPEL PS	382
CAREY PARK PS	404
CLIFTON PARK PS	205
COLLEGE ROW SCHOOL	27
COLLIE SHS	474
COOINDA PS	463
DALYELLUP COLLEGE	690
DALYELLUP PS	754

School Name	Projected Student Enrolment for Feb 2014, as at 30 August 2013
DARDANUP PS	181
DJIDI DJIDI ABORIGINAL SCHOOL	129
DONNYBROOK DHS	516
EATON COMMUNITY COLLEGE	430
EATON PS	447
FAIRVIEW PS	258
GLEN HUON PS	499
HARVEY - WA COLLEGE OF AGRICULTURE	133
HARVEY PS	343
HARVEY SHS	173
KINGSTON PS	803
KIRUP PS	52
MAIDENS PARK PS	225
MANEA SENIOR COLLEGE	453
NEWTON MOORE SHS	634
NEWTON MOORE SHS ESC	44
PARKFIELD PS	741
PICTON PS	192
RIVER VALLEY PS	91
SOUTH BUNBURY ESC	57
SOUTH BUNBURY PS	404
TREENDALE PS	208
TUART FOREST PS	305
WILSON PARK PS	119
YARLOOP PS	55
JARRAHDAL PS	104
MUNDIJONG PS	166
SERPENTINE PS	266
ARMADALE PS	483
ARMADALE SHS	644
ARMADALE SHS ESC	51
ASHBURTON DRIVE PS	508
BECKENHAM PS	478
BELMAY PS	264
BELMONT CITY COLLEGE	0
BELMONT PS	153
BENTLEY PS	219
BLETCHLEY PARK PS	1,006
BRAMFIELD PARK PS	227
BYFORD COMMUNITY KINDERGARTEN	0
BYFORD PS	309
CALADENIA PS	743
CAMPBELL PS	1,065
CANNING COLLEGE	332
CANNING VALE COLLEGE	1,297
CANNING VALE ESC	42
CANNING VALE PS	594
CANNINGTON COMMUNITY COLLEGE	629
CANNINGTON COMMUNITY ESC	106
CARLISLE PS	411

School Name	Projected Student Enrolment for Feb 2014, as at 30 August 2013
CARSON STREET SCHOOL	0
CECIL ANDREWS SHS	414
CHALLIS ECEC	410
CHALLIS PS	340
CLIFTON HILLS PS	405
CLOVERDALE ESC	29
CLOVERDALE PS	389
COLLIER PS	271
COMO PS	323
COMO SECONDARY COLLEGE	0
CURTIN PS	175
DARLING RANGE SPORTS COLLEGE	800
DAWSON PARK PS	396
EAST KENWICK PS	397
EAST MADDINGTON PS	369
EAST VICTORIA PARK ESC	14
EAST VICTORIA PARK PS	378
EDNEY PS	454
EXCELSIOR PS	518
FALLS ROAD PS	294
FOREST CRESCENT PS	749
FORRESTDALE COMMUNITY KINDERGARTEN	0
FORRESTDALE PS	164
FORRESTFIELD PS	179
GIBBS STREET PS	447
GOOSEBERRY HILL PS	369
GOSNELLS PS	398
GROVELANDS PS	406
GWYNNE PARK ESC	49
GWYNNE PARK PS	434
HIGH WYCOMBE PS	468
HUNTINGDALE PS	809
KALAMUNDA ESC	36
KALAMUNDA PS	307
KALAMUNDA SHS	911
KALAMUNDA SHS ESC	46
KELMSCOTT PS	434
KELMSCOTT SHS	1,302
KENSINGTON PS	477
KENSINGTON SECONDARY SCHOOL	0
KENT STREET SHS	803
KENWICK SCHOOL	66
KEWDALE PS	319
KINDAIMANNA COMMUNITY KINDERGARTEN	0
KINGSLEY PS	267
LATHLAIN PS	508
LESMURDIE PS	255
LESMURDIE SHS	856
MADDINGTON COMMUNITY KINDERGARTEN	0
MADDINGTON ESC	27

School Name	Projected Student Enrolment for Feb 2014, as at 30 August 2013
MADDINGTON PS	172
MAIDA VALE PS	383
MANNING PS	355
MARRI GROVE PS	590
MCDUGALL PARK COMMUNITY KINDERGARTEN	0
MILLEN PS	353
NEERIGEN BROOK PS	0
ORANGE GROVE PS	137
PIARA WATERS PS	720
PICKERING BROOK PS	0
QUEENS PARK PS	228
RANFORD PS	609
REDCLIFFE PS	281
ROLEYSTONE COMMUNITY COLLEGE	804
SEAFORTH PS	265
SEVENOAKS SENIOR COLLEGE	485
SOUTH EAST METROPOLITAN LANGUAGE DEVELOPMENT CENTRE	215
SOUTH PERTH PS	455
SOUTH THORNLIE PS	559
SOUTHERN RIVER COLLEGE	675
SPRING ROAD COMMUNITY KINDERGARTEN (INC)	0
THORNLIE PS	405
THORNLIE SHS	990
TRANBY PS	193
VICTORIA PARK PS	390
WALLISTON PS	204
WATTLE GROVE PS	673
WEST BYFORD PS	494
WESTFIELD PARK PS	303
WILLANDRA PS	666
WILSON PS	0
WIRRABIRRA ESC	26
WIRRABIRRA PS	468
WOODLUPINE PS	397
YALE PS	578
YULE BROOK COLLEGE	201
BREMER BAY PS	34
CASCADE PS	38
CASTLETOWN PS	566
CONDINGUP PS	67
ESPERANCE COMMUNITY KINDERGARTEN	0
ESPERANCE PS	510
ESPERANCE SHS	867
ESPERANCE SHS ESC	13
GRASS PATCH PS	12
HOPETOUN PS	157
JERDACUTTUP PS	24
LAKE KING PS	39
MUNGLINUP PS	13

School Name	Projected Student Enrolment for Feb 2014, as at 30 August 2013
NORSEMAN DHS	155
NULSEN PS	308
RAVENSTHORPE DHS	152
SALMON GUMS PS	30
SCADDAN PS	28
BALDIVIS SECONDARY COLLEGE	472
HAMMOND PARK PS	0
LAKELANDS PS	0
CARCOOLA PS	130
CAREER ENTERPRISE CENTRE - MANDURAH SENIOR COLLEGE	28
COODANUP COMMUNITY COLLEGE	456
DUDLEY PARK PS	525
DWELLINGUP PS	71
FALCON PS	636
FREM-PEEL (RIVERS) DEO	0
GLENCOE PS	0
GREENFIELDS PS	439
HALLS HEAD COMMUNITY COLLEGE	919
HALLS HEAD COMMUNITY COLLEGE ESC	51
HALLS HEAD PS	0
MANDURAH HS	0
MANDURAH PS	244
MANDURAH SENIOR COLLEGE	0
MEADOW SPRINGS ESC	44
MEADOW SPRINGS PS	935
NORTH DANDALUP PS	116
NORTH MANDURAH PS	490
OCEAN ROAD PS	567
PINJARRA PS	684
PINJARRA SHS	691
RIVERSIDE ESC	46
RIVERSIDE PS	578
SINGLETON PS	0
SOUTH HALLS HEAD PS	630
WAROONA DHS	267
APPLECROSS PS	474
APPLECROSS SHS	1,183
ARDROSS PS	436
ATTADALE PS	348
ATWELL COLLEGE	1,266
ATWELL PS	0
AUBIN GROVE PS	854
BALDIVIS PS	783
BANKSIA PARK PS	336
BANNISTER CREEK PS	575
BATEMAN PS	315
BEACONSFIELD PS	502
BEELIAR PS	512
BERTRAM PS	820

School Name	Projected Student Enrolment for Feb 2014, as at 30 August 2013
BIBRA LAKE PS	380
BICTON PS	423
BOORAGOON PS	400
BRENTWOOD PS	334
BROOKMAN PS	391
BULL CREEK PS	366
BUNGAREE PS	263
BURRENDAH PS	595
BYFORD SECONDARY COLLEGE	200
CALISTA PS	0
CARALEE COMMUNITY SCHOOL	321
CASTLEREAGH SCHOOL	62
CHARTHOUSE PS	691
COMET BAY COLLEGE	1,290
COMET BAY PS	0
COOGEE PS	506
COOLBELLUP COMMUNITY SCHOOL	253
COOLBELLUP LEARNING CENTRE	20
COOLOONGUP PS	412
EAST FREMANTLE PS	0
EAST HAMILTON HILL PS	177
EAST WAIKIKI PS	515
ENDEAVOUR EDUCATION SUPPORT CENTRE	40
ENDEAVOUR PS	619
FREMANTLE LANGUAGE DEVELOPMENT CENTRE	207
FREMANTLE PRIMARY BEHAVIOUR CENTRE	0
FREMANTLE PS	214
GILMORE COLLEGE	1,033
HAMILTON SHS	450
HARMONY PS	0
HAZEL ORME COMMUNITY KINDERGARTEN	0
HILLMAN PS	404
HILTON PS	142
JANDAKOT PS	498
JOHN CURTIN COLLEGE OF THE ARTS	1,098
JOHN TONKIN COLLEGE	840
KARDINYA PS	430
KOORANA ESC	0
KOORANA PS	408
LAKELAND SHS	523
LEDA ESC	0
LEDA PS	518
LEEMING PS	251
LEEMING SHS	723
LEEMING SHS ESC	60
LYNWOOD SHS	1,087
MAKYBE RISE PS	1,101
MALIBU SCHOOL	96
MEDINA PS	197
MELVILLE PS	698

School Name	Projected Student Enrolment for Feb 2014, as at 30 August 2013
MELVILLE SHS	961
MOUNT PLEASANT PS	413
NEWTON PS	257
NORTH FREMANTLE PS	128
NORTH LAKE SENIOR CAMPUS	325
NORTH PARMELIA PS	332
OBERTHUR PS	556
ORELIA PS	362
PALMYRA PS	546
PARKWOOD PS	565
PEEL LANGUAGE DEVELOPMENT SCHOOL	216
PHOENIX PS	219
PINEVIEW COMMUNITY KINDERGARTEN	0
POINT PERON CAMP SCHOOL	0
PORT KENNEDY PS	679
RICHMOND PS	427
RIVERTON ESC	12
RIVERTON PS	664
ROCKINGHAM BEACH ESC	28
ROCKINGHAM BEACH PS	531
ROCKINGHAM LAKES PS	752
ROCKINGHAM SHS	742
ROCKINGHAM SHS ESC	44
ROSSMOYNE PS	451
ROSSMOYNE SHS	1,695
ROSSMOYNE-RIVERTON COMMUNITY KINDERGARTEN	40
ROSTRATA PS	783
SAFETY BAY PS	735
SAFETY BAY SHS	988
SAMSON PS	417
SECRET HARBOUR PS	810
SETTLERS PS	1,031
SHELLEY PS	0
SOUTH COOGEE PS	517
SOUTH FREMANTLE SHS	302
SOUTH LAKE PS	385
SOUTHWELL PS	115
SPEARWOOD ALTERNATE SCHOOL	102
SPEARWOOD PS	209
SUCCESS PS	698
WAIKIKI PS	439
WARNBRO CHS	1,096
WARNBRO CHS ESC	68
WARNBRO PS	487
WEST LEEMING PS	497
WHITE GUM VALLEY PS	289
WILLETTON PS	571
WILLETTON SHS	0
WINTERFOLD PS	294

School Name	Projected Student Enrolment for Feb 2014 as at 30 August 2013
WINTHROP PS	675
YANGEBUP PS	310
BOULDER PS	359
COOLGARDIE PS	45
EAST KALGOORLIE PS	128
EASTERN GOLDFIELDS COLLEGE	442
EASTERN GOLDFIELDS ESC	35
HANNANS PS	381
KALGOORLIE PS	544
KALGOORLIE SOTA	25
KALGOORLIE-BOULDER CHS	707
KAMBALDA PS	140
KAMBALDA WEST DHS	0
LEINSTER PS	133
LEONORA DHS	134
MENZIES COMMUNITY SCHOOL	25
NORTH KALGOORLIE PS	639
O CONNOR ESC	28
O CONNOR PS	827
SOUTH KALGOORLIE PS	626
THE NGAANYATJARRA LANDS SCHOOL	344
BLACKSTONE CAMPUS NEA RCS	0
COSMO NEWBERRY CAMPUS NEA RCS	0
JAMESON CAMPUS NEA RCS	0
KIWIRRKURRA CAMPUS NEA RCS	0
LAVERTON PS	103
MOUNT MARGARET RCS	23
TJIRRKARLI CAMPUS NEA RCS	0
TJUKURLA CAMPUS NEA RCS	0
TJUNTJUNJARA RCS	35
WANARN CAMPUS NEA RCS	0
WARAKURNA CAMPUS NEA RCS	0
WARBURTON RANGES CAMPUS NEA RCS	0
WILUNA RCS	130
WINGELLINA CAMPUS NEA RCS	0
BROOME CAMP SCHOOL	0
BROOME PS	441
BROOME SHS	678
CABLE BEACH PS	493
DERBY DHS	579
KIMBERLEY SOTA	48
KUNUNURRA DHS	911
ROEBUCK PS	715
BAYULU RCS	121
DAWUL RCS	27
DJUGERARI RCS	11
FITZROY VALLEY DHS	0
HALLS CREEK DHS	363
JUNGDRANUNG RCS	17
KALUMBURU RCS	165

School Name	Projected Student Enrolment for Feb 2014, as at 30 August 2013
LA GRANGE RCS	175
LOOMA RCS	120.5
MULUDJA RCS	42
NGALAPITA RCS	15
ONE ARM POINT RCS	108
OOMBULGURRI RCS	0
WANANAMI RCS	45
WANGKATJUNGKA RCS	92
WYNDHAM DHS	144
ABROLHOS ISL SCH	100
ALLENDALE PS	377
BADGINGARRA PS	31
BEACHLANDS PS	151
BINNU PS	20
BLUFF POINT PS	374
BUNTINE PS	10
CARNAMAH DHS	105
CARNARVON COMMUNITY COLLEGE	642
CARNARVON SOTA	39
CERVANTES PS	53
CHAPMAN VALLEY PS	34
COOROW PS	32
CUE PS	34
DANDARAGAN PS	63
DONGARA DHS	434
ENEABBA PS	38
EXMOUTH DHS	441
GERALDTON PS	436
GERALDTON SENIOR COLLEGE	829
HOLLAND STREET SCHOOL	34
JOHN WILLCOCK COLLEGE	585
JURIEN DHS	331
KALBARRI DHS	256
LATHAM PS	12
LEEMAN PS	55
MEEKATHARRA DHS	185
MEEKATHARRA SOTA	34
MINGENEW PS	87
MORAWA - WA COLLEGE OF AGRICULTURE	0
MORAWA DHS	230
MOUNT MAGNET DHS	136
MOUNT TARCOOLA PS	617
MULLEWA DHS	88
NORTHAMPTON DHS	103
PERENJORI PS	48
RANGEWAY PS	525
SHARK BAY PS	85
THREE SPRINGS PS	87
WAGGRAKINE PS	517
WALKAWAY PS	81

School Name	Projected Student Enrolment for Feb 2014, as at 30 August 2013
WANDINA PS	0
WATHEROO PS	50
YALGOO PS	30
YUNA PS	28
BURRINGURRAH RCS	39
GASCOYNE JUNCTION RCS	5
PIA WAJARRI RCS	25
SANDSTONE PS	5
USELESS LOOP PS	36
YULGA JINNA RCS	0
AVONVALE ESC	28
AVONVALE PS	130
BABAKIN PS	22
BAKERS HILL PS	187
BALLIDU PS	20
BEACON PS	37
BENCUBBIN PS	34
BOLGART PS	32
BRUCE ROCK DHS	137
CADOUX PS	20
CALINGIRI PS	52
CENTRAL MIDLANDS SHS	183
CUNDERDIN - WA COLLEGE OF AGRICULTURE	120
CUNDERDIN DHS	153
DALWALLINU DHS	162
DOWERIN DHS	114
GOOMALLING PS	58
KALANNIE PS	51
KELLERBERRIN DHS	204
KOORDA PS	45
MECKERING PS	31
MERREDIN COLLEGE	615
MOORA PS	111
MOORINE ROCK PS	33
MUKINBUDIN DHS	93
NAREMBEEN DHS	113
NORTHAM PS	425
NORTHAM SHS	590
NUNGARIN PS	25
QUAIRADING DHS	130
SOUTHERN CROSS DHS	102
TAMMIN PS	64
TOODYAY DHS	403
TRAYNING PS	55
WEST NORTHAM PS	147
WONGAN HILLS DHS	248
WUNDOWIE PS	99
WYALKATCHEM DHS	93
YERECOA PS	38
YORK DHS	490

School Name	Projected Student Enrolment for Feb 2014, as at 30 August 2013
BEVERLEY DHS	176
BODDINGTON DHS	305
BRAESIDE PS	224
BROOKTON DHS	137
BROOMEHILL PS	49
CORRIGIN DHS	149
DARKAN PS	76
DUMBLEYUNG PS	29
EAST NARROGIN PS	287
HYDEN PS	84
KATANNING PS	255
KATANNING SHS	357
KONDININ PS	42
KUKERIN PS	47
KULIN DHS	106
LAKE GRACE DHS	119
NARROGIN - WA COLLEGE OF AGRICULTURE	120
NARROGIN LOCAL EDUCATION OFFICE	0
NARROGIN PS	353
NARROGIN SHS	610
NYABING PS	36
PINGELLY PS	164
PINGRUP PS	25
TINCURRIN PS	7
WAGIN DHS	265
WANDERING PS	47
WICKEPIN PS	51
WILLIAMS PS	110
WOODANILLING PS	15
YEALERING PS	26
BALER PS	600
BAYNTON WEST PS (PLANNING NAME)	492
CASSIA ESC	16
CASSIA PS	366
DAMPIER CAMP SCHOOL	0
DAMPIER PS	194
HEDLAND SHS	688
KARRATHA PS	379
KARRATHA SHS	620
MILLARS WELL PS	328
NEWMAN PS	320
NEWMAN SHS	247
NORTH TOM PRICE PS	277
PANNAWONICA PS	140
PARABURDOO PS	291
PEGS CREEK PS	307
PORT HEDLAND PS	442
PORT HEDLAND SOTA	42
ROEBOURNE DHS	195
SOUTH HEDLAND PS	271

School Name	Projected Student Enrolment for Feb 2014, as at 30 August 2013
SOUTH NEWMAN PS	476
TAMBREY PS	397
TOM PRICE PS	300
TOM PRICE SHS	222
WICKHAM PS	191
JIGALONG RCS	98
MARBLE BAR PS	56
NULLAGINE PS	49
ONSLow PS	147
YANDEYARRA RCS	29
BULLSBROOK COMMUNITY KINDERGARTEN	123
BULLSBROOK DHS	908
CHIDLOW COMMUNITY KINDERGARTEN	300
CHIDLOW PS	176
WOOROLOO PS	75
ALINJARRA PS	404
ANZAC TERRACE PS	368
ARBOR GROVE PS	702
ASHDALE PS	938
ASHDALE SECONDARY COLLEGE	1,075
ASHFIELD PS	105
AVELEY PS	349
BALGA PS	232
BALGA SHS	392
BALLAJURA COMMUNITY COLLEGE	1,450
BALLAJURA PS	602
BASSENDAN PS	390
BAYSWATER PS	365
BEECHBORO PS	412
BOYARE PS	386
BURBRIDGE SCHOOL	44
CAMBOON PS	437
CAVERSHAM PS	202
CLAYTON VIEW PS	150
COOLBINIA PS	419
CYRIL JACKSON ESC	15
CYRIL JACKSON SENIOR CAMPUS	494
DARLINGTON PS	380
DIANELLA HEIGHTS PS	432
DRYANDRA PS	333
DURHAM ROAD SCHOOL	152
EAST BEECHBORO PS	427
EASTERN HILLS SHS	696
EDEN HILL PS	452
ELLEN STIRLING PS	738
ELLENBROOK PS	562
ELLENBROOK SECONDARY COLLEGE	1,456
EMBLETON PS	154
GIDGEGANNUP PS	265
GIRRAWHEEN SHS	378

School Name	Projected Student Enrolment for Feb 2014, as at 30 August 2013
GLADYS NEWTON SCHOOL	96
GLEN FORREST COMMUNITY KINDERGARTEN	0
GLEN FORREST PS	306
GOVERNOR STIRLING SHS	635
GREENMOUNT PS	398
GUILDFORD PS	318
HAMPTON PARK PS	433
HAMPTON SHS	616
HELENA VALLEY PS	273
HERNE HILL PS	188
HIGHGATE PS	634
HILLCREST PS	393
HUDSON PARK PS	330
ILLAWARRA PS	389
INGLEWOOD PS	557
JOHN FORREST SECONDARY COLLEGE	751
KOONDOOLA PS	342
KYILLA PS	285
LANDSDALE PS	899
LOCKRIDGE PS	239
LOCKRIDGE SHS	327
MADELEY PS	602
MALVERN SPRINGS PS	575
MARANGAROO PS	335
MAYLANDS PENINSULA PS	619
MIDDLE SWAN PS	518
MIDVALE PS	388
MIRRABOOKA PS	283
MIRRABOOKA SHS	566
MIRRABOOKA SHS ESC	63
MOORDITJ NOONGAR COMMUNITY COLLEGE	110
MORLEY PS	199
MORLEY SHS	825
MOUNT HELENA COMMUNITY KINDERGARTEN	0
MOUNT HELENA PS	242
MOUNT LAWLEY PS	477
MOUNT LAWLEY SHS	1,289
MUNDARING PS	304
NOLLAMARA PS	342
NORANDA PS	383
NORTH BALGA PS	239
NORTH EAST METRO LANGUAGE DEVELOPMENT CENTRE	230
NORTH MORLEY PS	227
NORTH PERTH PS	466
PARKERVILLE PS	306
RAWLINSON PS	646
ROSEWORTH ESC	20
ROSEWORTH PS	432
SAWYERS VALLEY PS	191

School Name	Projected Student Enrolment for Feb 2014, as at 30 August 2013
SIR DAVID BRAND SCHOOL	51
SOUTH BALLAJURA ESC	33
SOUTH BALLAJURA PS	509
SUTHERLAND/DIANELLA PS	309
SWAN VIEW PS	401
SWAN VIEW SHS	390
TUART COLLEGE	370
TUART HILL COMMUNITY KINDERGARTEN	0
TUART HILL PS	386
UPPER SWAN PS	409
WADDINGTON PS	123
WARRIAPENDI PS	185
WELD SQUARE PS	172
WEST BEECHBORO PS	488
WEST MORLEY PS	256
WESTMINSTER ESC	30
WESTMINSTER JPS	262
WESTMINSTER PS	181
WHITTOME STREET PRESCHOOL	0
WOODBIDGE PS	350
YOKINE PS	289
AUGUSTA PS	88
BALINGUP PS	33
BOYUP BROOK DHS	168
BRIDGETOWN CAMP SCHOOL	0
BRIDGETOWN HS	151
BRIDGETOWN PS	348
BUSSELTON PS	313
BUSSELTON SHS	526
CAPE NATURALISTE COLLEGE	477
COWARAMUP PS	245
DUNSBOROUGH PS	730
EAST MANJIMUP PS	309
GEOGRAPHE ESC	45
GEOGRAPHE PS	658
GREENBUSHES PS	52
KARRIDALE PS	66
MANJIMUP ESC	20
MANJIMUP PS	303
MANJIMUP SHS	523
MARGARET RIVER PS	815
MARGARET RIVER SHS	586
NANNUP COMMUNITY KINDERGARTEN	0
NANNUP DHS	143
NORTHCLIFFE DHS	76
PEMBERTON CAMP SCHOOL	0
PEMBERTON DHS	160
VASSE PS	574
WEST BUSSELTON PS	483
BALCATT A PS	184

School Name	Projected Student Enrolment for Feb 2014, as at 30 August 2013
BALCATTÀ SHS	526
BAMBARA PS	233
BANKSIA GROVE SECONDARY SCHOOL	0
BEAUMARIS PS	827
BELDON ESC	41
BELDON PS	331
BELRIDGE SECONDARY COLLEGE	755
BELRIDGE SHS ESC	78
BUTLER COLLEGE	611
BUTLER PS	965
CARINE PS	618
CARINE SHS	1,078
CARRAMAR PS	884
CHRISTMAS ISLAND DHS	239
CHURCHLANDS PS	502
CHURCHLANDS SHS	1,548
CITY BEACH PS	200
CLARKSON CHS	573
CLARKSON PS	576
COCOS ISLANDS DHS	95
CONNOLLY PS	536
COTTESLOE PS	344
CRAIGIE HEIGHTS PS	395
CREANEY ESC	33
CREANEY PS	343
CURRAMBINE PS	870
DALKEITH PS	382
DALMAIN PS	292
DAVALLIA PS	473
DEANMORE PS	472
DOUBLEVIEW PS	426
DUNCRAIG PS	373
DUNCRAIG SHS	1,073
DUNCRAIG SHS ESC	58
EAST BUTLER PS	854
EAST HAMERSLEY PS	183
EAST WANNEROO PS	408
EDDYSTONE PS	256
EDGEWATER PS	431
FLOREAT PARK PS	512
FRESHWATER BAY PS	388
GLENDALE PS	350
GLENGARRY PS	382
GOOLLELAL PS	270
GREENWOOD COLLEGE	687
GREENWOOD PS	394
HALIDON PS	286
HAWKER PARK PS	239
HEATHRIDGE PS	180
HILLARYS COMMUNITY KINDERGARTEN	0

School Name	Projected Student Enrolment for Feb 2014, as at 30 August 2013
HILLARYS PS	567
HOCKING PS	780
HOLLYWOOD PS	331
INSTRUMENTAL MUSIC SCHOOL SERVICE	0
JOLIMONT PS	247
JOONDALUP ESC	41
JOONDALUP PS	619
KAPINARA PS	389
KARRINYUP PS	506
KINROSS COLLEGE	850
KINROSS PS	634
LAKE GWELUP PS	494
LAKE MONGER PS	220
MARMION PS	372
MERRIWA ESC	41
MERRIWA PS	503
MINDARIE PS	766
MINDARIE SENIOR COLLEGE	830
MOSMAN PARK PS	345
MOSMAN PARK SCHOOL FOR THE DEAF	20
MOUNT CLAREMONT PS	170
MOUNT HAWTHORN ESC	19
MOUNT HAWTHORN PS	807
MULLALOO BEACH PS	336
MULLALOO COMMUNITY KINDERGARTEN	0
MULLALOO HEIGHTS PS	237
NEDLANDS PS	572
NEERABUP PS	473
NEWBOROUGH PS	456
NORTH BEACH PS	426
NORTH BUTLER PS	359
NORTH COTTESLOE PS	404
NORTH METRO REGIONAL EDUCATION OFFICE	0
NORTH WOODVALE PS	422
OCEAN REEF PS	384
OCEAN REEF SHS	1,110
OSBORNE PS	197
PADBURY COMMUNITY KINDERGARTEN	0
PADBURY PS	171
PEARSALL PS	266
PERTH MODERN SCHOOL	1,045
POSEIDON PS	286
POYNTER PS	504
QUINNS BEACH PS	738
QUINNS ROCKS PS	415
ROSALIE PS	498
SCARBOROUGH PS	154
SCHOOL OF SPECIAL EDUCATION NEEDS: SENSORY	0
SEAVIEW COMMUNITY KINDERGARTEN	0

ESTIMATES AND FINANCIAL OPERATIONS COMMITTEE
QUESTIONS ON NOTICE SUPPLEMENTARY INFORMATION

Tuesday, 24 September 2013

Department of Education

Question No. 2: Hon Sue Ellery MLC asked –

I refer to the Department of Education budget and subsequent announcement of a major overhaul of public school funding and ask for each public school in WA in 2014 –

(a) What is the dollar amount of the 1.5% procurement savings?

Answer: It is not possible to provide finalised information at this time. The 1.5% procurement savings are calculated for the goods and services components in the School Grant. The 2014 School Grant for each public school has not yet been calculated.

(b) What is the dollar amount of the effect of the 30% reduction in the School Support Programs Resource Allocation?

Answer: For each public school allocation see Attachment 1. The 30% reduction will be taken from the 2014 School Support Programs Resource Allocation (SSPRA). Principals have been advised of their 2014 SSPRA calculated through the normal formula less 30%.

Unlike other funding lines, finalised SSPRA information can be provided to schools at this time. The SSPRA calculation includes 2013 enrolment and attendance data and NAPLAN data from the previous year (2012). No part of the calculation depends upon enrolments or other information from 2014.

(c) What is the dollar amount of the long service leave levy?

Answer: It is not possible to provide the finalised long service leave levy for each public school for 2014. The levy will depend on the final allocated teacher and support staff FTE (gardeners and AIEO allocation is not included in the levy). When final staffing allocations are confirmed for each school following the student census on 14 February 2014, principals will be able to calculate the long service leave levy for their schools.

School Name	Projected Student Enrolment for Feb 2014, as at 30 August 2013
SHENTON COLLEGE	1,332
SHENTON COLLEGE DEAF EDUCATION CENTRE	30
SIDE	193
SOMERLY PS	520
SORRENTO PS	463
SOUTH PADBURY PS	326
SPRING HILL PS	533
SPRINGFIELD PS	422
SUBIACO PS	615
SWANBOURNE PS	502
TAKARI PS	233
TAPPING PS	868
WANNEROO PS	604
WANNEROO SECONDARY COLLEGE	1,081
WARWICK SHS	508
WEMBLEY DOWNS PS	405
WEMBLEY PS	824
WEST BALCATT A PS	468
WEST COAST LANGUAGE DEVELOPMENT CENTRE	243
WEST COAST PRIMARY BEHAVIOUR CENTRE	0
WEST GREENWOOD PS	450
WEST LEEDERVILLE PS	460
WOODLANDS PS	449
WOODVALE PS	415
WOODVALE SECONDARY COLLEGE	1,270
YULUMA PS	207
BINDOON PS	188
GINGIN DHS	413
LANCELIN PS	154
NORTH YANCHEP PS	148
TWO ROCKS PS	473
YANCHEP DHS	797

ATTACHMENT 1

School	Dollar amount of 30% SSPRA reduction	Reduction in SSPRA as a % of the total value of the 2013 resources provided to school, including school grant and staffing
Albany Senior High School	\$59,423.95	0.62
Applecross Senior High School	\$23,005.83	0.20
Armadale Senior High School	\$75,579.12	1.11
Balcatta Senior High School	\$40,485.89	0.77
Belmont City College	\$65,902.36	0.80
Bridgetown High School	\$11,873.88	0.53
Bunbury Senior High School	\$57,421.84	0.72
Busselton Senior High School	\$41,316.20	0.72
Churchlands Senior High School	\$21,228.88	0.15
Collie Senior High School	\$67,039.86	0.97
Cyril Jackson Senior Campus	\$35,870.02	0.56
Eastern Hills Snr High School	\$21,880.16	0.29
Esperance Senior High School	\$74,194.48	0.91
Governor Stirling Snr High Sch	\$59,352.26	1.00
Hamilton Senior High School	\$54,530.75	0.97
Hampton Senior High School	\$53,511.59	0.85
Harvey Senior High School	\$34,349.86	1.12
John Curtin College Of The Arts	\$6,935.79	0.06
John Forrest Secondary College	\$49,316.98	0.58
Kalamunda Senior High School	\$23,487.31	0.26
Katanning Senior High School	\$58,365.44	1.25
Kent Street Senior High School	\$24,597.59	0.31
Gilmore College	\$124,609.38	1.15
Manjimup Senior High School	\$51,594.64	0.76
Margaret River Snr High School	\$21,190.77	0.30
Melville Senior High School	\$29,459.65	0.23
Mirrabooka Senior High School	\$64,715.71	1.09
Mount Lawley Senior High School	\$23,953.14	0.18
Narrogin Senior High School	\$48,538.66	0.74
Newton Moore Senior High School	\$68,076.39	0.92
Northam Senior High School	\$62,099.53	0.95
Perth Modern School	\$6,132.76	0.05
Pinjarra Senior High School	\$52,349.79	0.77
South Fremantle Snr High School	\$32,616.76	0.87
Rossmoyne Senior High School	\$20,905.72	0.13
Como Secondary College	\$20,165.11	0.29
Balga Senior High School	\$90,521.92	1.08
Morley Senior High School	\$51,281.98	0.68
Central Midlands Snr High Sch	\$33,651.47	0.83

School	Dollar amount of 30% SSPRA reduction	Reduction in SSPRA as a % of the total value of the 2013 resources provided to school, including school grant and staffing
Hedland Senior High School	\$105,011.16	1.15
Rockingham Senior High School	\$73,458.48	0.86
Thornlie Senior High School	\$74,534.73	0.80
Karratha Senior High School	\$70,453.29	0.97
Carine Senior High School	\$23,533.26	0.23
Kelmscott Senior High School	\$115,663.73	0.99
North Lake Senior Campus	\$46,403.02	0.89
Beverley District High School	\$9,777.36	0.44
Boddington District High School	\$17,435.60	0.46
Boyup Brook District High School	\$8,994.08	0.34
Brookton District High School	\$13,285.95	0.69
Broome Senior High School	\$124,949.46	1.32
Bruce Rock District High School	\$16,134.28	0.99
Bullsbrook District High School	\$49,684.70	0.53
Carnamah District High School	\$14,879.93	0.71
Corrigin District High School	\$12,972.81	0.60
Cunderdin District High School	\$12,335.66	0.65
Dalwallinu District High School	\$13,395.12	0.45
Denmark High School	\$31,509.16	0.03
Derby District High School	\$139,904.54	2.11
Donnybrook District High School	\$20,645.55	0.38
Dowerin District High School	\$6,640.12	0.41
Exmouth District High School	\$40,472.94	1.00
Gnowangerup District High Sch	\$15,231.99	0.83
Jerramungup District High Sch	\$10,068.23	0.79
Kellerberrin District High Sch	\$24,691.17	0.85
Kojonup District High School	\$21,849.89	0.78
Kulin District High School	\$12,223.98	0.65
Lake Grace District High School	\$9,815.60	0.50
Meekatharra District High Sch	\$67,943.01	2.55
Morawa District High School	\$29,997.63	0.83
Mukinbudin District High School	\$7,403.06	0.43
Mullewa District High School	\$29,366.67	1.95
Nannup District High School	\$10,186.97	0.63
Narembeen District High School	\$12,678.62	0.66
Norseman District High School	\$26,471.33	1.07
Northampton District High Sch	\$23,290.35	0.87
Northliffe District High Sch	\$6,648.69	0.45
Pemberton District High School	\$6,857.71	0.32
Quairading District High School	\$17,062.20	0.86
Ravensthorpe District High Sch	\$11,409.52	0.49

School	Dollar amount of 30% SSPRA reduction	Reduction in SSPRA as a % of the total value of the 2013 resources provided to school, including school grant and staffing
Southern Cross Dist High Sch	\$16,269.44	0.70
Tom Price Senior High School	\$50,619.57	1.18
Toodyay District High School	\$22,096.17	0.54
Wagin District High School	\$22,241.17	0.75
Waroon District High School	\$28,069.12	0.80
Wongan Hills Dist High School	\$20,562.21	0.61
Wyalkatchem District High School	\$7,619.71	0.51
Wyndham District High School	\$58,441.91	2.16
York District High School	\$26,275.62	0.50
Girrawheen Senior High School	\$51,459.67	0.82
Kambalda West District High Sch	\$28,752.00	0.74
Lockridge Senior High School	\$42,290.76	0.96
Lynwood Senior High School	\$65,566.72	0.54
Newman Senior High School	\$56,375.20	1.56
Darling Range Sports College	\$70,392.94	0.92
Swan View Senior High School	\$74,501.93	1.57
Southern River College	\$73,218.16	1.32
Greenwood Senior High School	\$24,256.70	0.27
Kununurra District High School	\$196,648.77	2.27
Wanneroo Senior High School	\$95,119.74	0.94
Willetton Senior High School	\$23,917.35	0.14
Yule Brook College	\$34,620.52	0.96
Safety Bay Senior High School	\$82,939.59	0.81
Duncraig Senior High School	\$23,631.10	0.21
Dongara District High School	\$28,750.68	0.59
Cecil Andrews Snr High School	\$59,402.84	1.30
Lesmurdie Senior High School	\$23,100.82	0.26
Warwick Senior High School	\$45,393.38	0.99
Gingin District High School	\$23,514.90	0.56
Yanchep District High School	\$59,945.57	0.89
North Albany Senior High School	\$55,675.32	0.94
Ocean Reef Senior High School	\$23,024.14	0.20
Schools Of Isolated & Dist Education	\$28,080.52	0.23
Mount Magnet District High School	\$43,288.45	1.86
Leeming Senior High School	\$20,522.08	0.30
Woodvale Secondary College	\$22,561.32	0.17
Halls Creek District High School	\$159,918.79	3.07
Australind Senior High School	\$69,807.79	0.66
Coodanup Community College	\$72,810.43	1.08
Fitzroy Valley Dist High School	\$114,417.48	2.60
Lakeland Senior High School	\$42,855.37	0.74

School	Dollar amount of 30% SSPRA reduction	Reduction in SSPRA as a % of the total value of the 2013 resources provided to school, including school grant and staffing
Leonora District High School	\$30,859.57	1.85
Belridge Senior High School	\$45,495.83	0.55
Jurien Bay District High School	\$28,968.36	0.69
Ballajura Community College	\$104,484.30	0.61
Warnbro Community High School	\$89,147.08	0.88
Clarkson Community High School	\$66,138.35	0.99
Eaton Community College	\$48,688.53	0.90
Geraldton Senior College	\$78,847.78	0.84
Sevenoaks Senior College	\$40,397.53	0.64
Halls Head Community College	\$64,262.21	0.75
Shenton College	\$20,844.47	0.16
Cannington Community College	\$47,584.49	0.77
Mindarie Senior College	\$21,524.69	0.23
Kinross College	\$15,303.78	0.18
Kalbarri District High School	\$25,164.61	0.89
Canning Vale College	\$28,164.59	0.22
Comet Bay College	\$27,053.44	0.22
Ellenbrook Secondary College	\$47,053.62	0.38
Cape Naturaliste College	\$36,905.40	0.65
Manea Senior College	\$19,591.64	0.36
Ashdale Secondary College	\$24,504.02	0.25
Eastern Goldfields College	\$45,502.30	0.98
Dalyellup College	\$23,670.58	0.34
Atwell College	\$33,132.54	0.24
Kalgoorlie-Boulder Com Hs	\$99,155.82	1.52
Mount Barker Community College	\$53,254.62	0.84
Roebourne District High School	\$74,035.93	2.39
Baldivis Secondary School	\$3,694.15	0.14
Butler College	\$3,694.15	0.09
Byford SHS (New School 2014)	\$3,694.15	0.93
Merredin College	\$65,139.15	0.98
Roleystone Com Col	\$24,437.17	0.40
John Tonkin College	\$87,385.79	0.77
WA College Of Agriculture – Narrogin	\$5,282.16	0.23
WA College Of Agriculture – Cunderdin	\$3,694.15	0.08
WA College Of Agriculture – Denmark	\$1,847.07	0.11
WA College Of Agriculture – Morawa	\$1,847.07	0.06
WA College Of Agriculture - Harvey	\$6,393.77	0.14
Canning College	\$4,433.57	0.10
Tuart College	\$4,137.80	0.09
Carnarvon Community College	\$150,568.90	1.90

School	Dollar amount of 30% SSPRA reduction	Reduction in SSPRA as a % of the total value of the 2013 resources provided to school, including school grant and staffing
John Willcock College	\$104,430.03	1.58
Adam Road Primary School	\$29,053.68	0.63
Albany Primary School	\$14,868.36	0.35
Allanson Primary School	\$9,363.42	0.56
Allendale Primary School	\$37,264.63	1.26
Amaroo Primary School	\$36,059.25	0.92
Winterfold Primary School	\$8,785.23	0.34
Applecross Primary School	\$5,274.10	0.12
Ardross Primary School	\$5,839.12	0.16
Armadale Primary School	\$7,885.35	0.21
Ashfield Primary School	\$10,099.16	0.63
Attadale Primary School	\$4,403.14	0.13
Augusta Primary School	\$8,153.75	0.84
Avonvale Primary School	\$32,207.36	1.83
Babakin Primary School	\$5,932.56	0.66
Badgingarra Primary School	\$6,339.33	1.07
Bakers Hill Primary School	\$11,683.43	0.73
Balcatta Primary School	\$8,576.66	0.55
Baldivis Primary School	\$10,018.00	0.18
Balga Primary School	\$21,942.78	0.74
Balingup Primary School	\$1,847.07	0.19
Ballidu Primary School	\$5,196.68	0.82
Bassendean Primary School	\$6,439.62	0.20
Bayswater Primary School	\$5,555.71	0.20
Beachlands Primary School	\$27,961.22	1.56
Beacon Primary School	\$6,814.34	0.84
Beaconsfield Primary School	\$13,935.93	0.33
Belmay Primary School	\$21,847.41	0.82
Belmont Primary School	\$9,380.45	0.53
Bencubbin Primary School	\$5,877.22	0.86
Bentley Primary School	\$15,792.37	0.96
Bicton Primary School	\$4,873.29	0.14
Bindoon Primary School	\$6,537.60	0.31
Binnu Primary School	\$4,875.27	0.74
Bluff Point Primary School	\$62,108.20	1.88
Bolgart Primary School	\$2,752.29	0.28
Booragoon Primary School	\$6,082.65	0.19
Borden Primary School	\$4,831.38	0.58
Boulder Primary School	\$46,730.96	1.66
Boyanup Primary School	\$6,452.25	0.36
Bremer Bay Primary School	\$7,225.24	0.86

School	Dollar amount of 30% SSPRA reduction	Reduction in SSPRA as a % of the total value of the 2013 resources provided to school, including school grant and staffing
Brentwood Primary School	\$7,425.71	0.23
Bridgetown Primary School	\$14,019.66	0.41
Broomehill Primary School	\$5,901.54	0.68
Brunswick Junction Primary School	\$8,092.44	0.67
Bunbury Primary School	\$5,586.52	0.15
Cooinda Primary School	\$21,190.06	0.56
South Bunbury Primary School	\$21,873.50	0.57
Buntine Primary School	\$6,414.46	0.78
River Valley Primary School	\$3,087.52	0.23
Busselton Primary School	\$24,144.60	0.95
West Busselton Primary School	\$24,887.40	0.63
Byford Primary School	\$15,968.66	0.69
Cadoux Primary School	\$5,332.81	1.65
Calingiri Primary School	\$3,636.84	0.48
Calista Primary School	\$33,970.51	0.91
Beckenham Primary School	\$26,626.58	0.65
Capel Primary School	\$18,778.02	0.56
Carey Park Primary School	\$35,523.78	0.95
Carlisle Primary School	\$16,629.52	0.42
Castletown Primary School	\$26,053.42	0.68
Caversham Primary School	\$8,192.53	0.42
Chapman Valley Primary School	\$4,292.39	0.40
Djugerari Remote Com School	\$13,966.13	1.67
Chidlow Primary School	\$9,383.90	0.63
Wangkatjunga Remote Com School	\$32,111.56	3.36
Churchlands Primary School	\$4,320.21	0.11
City Beach Primary School	\$4,191.50	0.24
Freshwater Bay Primary School	\$4,172.83	0.17
Collier Primary School	\$5,689.50	0.27
Como Primary School	\$5,959.49	0.22
Condingup Primary School	\$7,900.24	0.69
Coogee Primary School	\$7,288.63	0.21
South Coogee Primary School	\$17,897.67	0.45
Coolbinia Primary School	\$5,605.14	0.16
Coolgardie Primary School	\$5,395.27	0.94
Coorow Primary School	\$6,071.99	0.76
Cottesloe Primary School	\$3,882.50	0.14
North Cottesloe Primary School	\$4,067.79	0.13
Cowaramup Primary School	\$5,303.52	0.25
Cranbrook Primary School	\$7,382.15	0.67
Cue Primary School	\$12,140.87	2.53

School	Dollar amount of 30% SSPRA reduction	Reduction in SSPRA as a % of the total value of the 2013 resources provided to school, including school grant and staffing
Dalkeith Primary School	\$4,387.55	0.14
Dampier Primary School	\$5,251.87	0.29
North Dandalup Primary School	\$8,443.52	0.99
Dandaragan Primary School	\$7,401.55	0.76
Dardanup Primary School	\$5,853.44	0.33
Darlington Primary School	\$5,503.35	0.15
Sutherland Dianella Primary Sch	\$6,694.78	0.18
Dianella Heights Primary School	\$5,875.69	0.16
Doubleview Primary School	\$4,148.51	0.13
Dunsborough Primary School	\$9,783.54	0.19
Dwellingup Primary School	\$3,795.69	0.41
Eaton Primary School	\$21,091.07	0.53
Eden Hill Primary School	\$21,159.20	0.56
Embleton Primary School	\$12,840.92	0.47
Eneabba Primary School	\$5,169.71	0.44
Esperance Primary School	\$24,441.32	0.58
Fairview Primary School	\$21,402.98	0.74
Cloverdale Primary School	\$23,543.15	0.85
West Morley Primary School	\$5,470.23	0.24
Floreat Park Primary School	\$4,660.53	0.13
Forrestfield Primary School	\$18,123.95	1.06
Frankland River Primary School	\$5,896.03	0.67
East Fremantle Primary School	\$4,303.03	0.15
North Fremantle Primary School	\$4,020.68	0.33
Gairdner Primary School	\$6,890.70	0.62
Gascoyne Junction Remote Com School	\$10,432.65	1.87
Kapinara Primary School	\$3,902.39	0.13
Geraldton Primary School	\$28,571.45	0.81
Glen Forrest Primary School	\$6,441.53	0.26
Bayulu Remote Com School	\$65,459.45	3.85
Gosnells Primary School	\$32,495.38	1.01
Grass Patch Primary School	\$6,318.44	0.43
Mount Claremont Primary School	\$4,138.26	0.16
Greenbushes Primary School	\$4,733.28	0.57
Greenmount Primary School	\$13,935.67	0.40
Guildford Primary School	\$5,046.83	0.18
North Beach Primary School	\$4,635.30	0.13
East Hamilton Hill Primary Sch	\$16,604.14	0.88
Hampton Park Primary School	\$16,908.11	0.45
Harvey Primary School	\$24,914.95	0.69
Helena Valley Primary School	\$6,493.05	0.28

School	Dollar amount of 30% SSPRA reduction	Reduction in SSPRA as a % of the total value of the 2013 resources provided to school, including school grant and staffing
Herne Hill Primary School	\$11,218.69	0.62
Highgate Primary School	\$15,662.22	0.30
High Wycombe Primary School	\$26,726.45	0.68
Hillcrest Primary School	\$8,785.49	0.27
Hilton Primary School	\$14,048.73	0.81
Hollywood Primary School	\$4,544.93	0.19
Hyden Primary School	\$7,340.69	0.43
Inglewood Primary School	\$5,197.10	0.13
Yuluma Primary School	\$7,897.99	0.41
Jandakot Primary School	\$6,564.72	0.15
Jarrahdale Primary School	\$5,748.52	0.62
Jerdacuttup Primary School	\$6,947.35	1.25
Jigalong Remote Com School	\$44,164.09	3.10
Jolimont Primary School	\$4,004.80	0.14
Kalamunda Primary School	\$4,908.12	0.25
Kalannie Primary School	\$6,025.22	0.67
Kalgoorlie Primary School	\$27,994.95	0.64
East Kalgoorlie Primary School	\$38,656.93	2.40
North Kalgoorlie Primary School	\$14,331.55	0.32
South Kalgoorlie Primary School	\$55,414.13	1.04
Kalumburu Remote Com School	\$80,307.94	2.67
Karridale Primary School	\$4,870.77	0.25
Karrinyup Primary School	\$6,165.83	0.15
Katanning Primary School	\$33,984.65	1.23
Kelmscott Primary School	\$17,629.40	0.52
Kendenup Primary School	\$6,082.16	0.24
Kensington Primary School	\$6,676.44	0.20
Kewdale Primary School	\$15,116.38	0.55
Kirup Primary School	\$1,847.07	0.21
Kondinin Primary School	\$7,784.71	0.62
Curtin Primary School	\$4,986.21	0.28
Koorda Primary School	\$7,656.17	0.68
Kukerin Primary School	\$5,990.54	0.95
Kyilla Primary School	\$4,676.48	0.12
La Grange Remote Com School	\$76,821.63	3.09
Lake Gwelup Primary School	\$4,422.22	0.11
Lake King Primary School	\$7,552.66	0.70
Lancelin Primary School	\$9,700.41	0.79
Latham Primary School	\$6,284.17	1.20
Lathlain Primary School	\$6,014.78	0.18
Laverton School	\$26,834.07	1.71

School	Dollar amount of 30% SSPRA reduction	Reduction in SSPRA as a % of the total value of the 2013 resources provided to school, including school grant and staffing
West Leederville Primary School	\$4,005.81	0.12
Lesmurdie Primary School	\$5,929.24	0.24
Maddington Primary School	\$16,243.82	0.98
Maida Vale Primary School	\$6,057.26	0.20
Mandurah Primary School	\$26,666.48	1.40
Manjimup Primary School	\$25,698.04	0.88
Manning Primary School	\$5,782.59	0.24
Marble Bar Primary School	\$24,050.44	2.01
Margaret River Primary School	\$19,150.46	0.33
Marmion Primary School	\$4,444.05	0.15
Meckering Primary School	\$4,109.23	0.77
Medina Primary School	\$24,063.25	1.39
Melville Primary School	\$5,606.67	0.12
Menzies Remote Com School	\$11,227.53	0.96
Woodbridge Primary School	\$17,563.93	0.68
Midvale Primary School	\$40,070.38	1.36
Millen Primary School	\$8,609.64	0.31
Mingenew Primary School	\$8,749.45	0.65
Mirrabooka Primary School	\$30,214.67	0.97
Moora Primary School	\$12,202.95	0.93
Moorine Rock Primary School	\$7,042.22	0.76
Morley Primary School	\$9,693.49	0.58
Mosman Park Primary School	\$5,736.86	0.19
Mount Hawthorn Primary School	\$5,472.39	0.09
Mount Helena Primary School	\$6,364.15	0.37
Mount Lawley Primary School	\$5,504.39	0.17
Mount Lockyer Primary School	\$39,644.18	0.87
Mount Manypeaks Primary School	\$2,068.61	0.26
Mount Margaret Remote Com School	\$13,850.20	2.46
Mount Pleasant Primary School	\$6,243.89	0.22
Mundaring Primary School	\$4,895.21	0.20
Mundijong Primary School	\$9,446.51	0.52
Munglinup Primary School	\$6,876.34	1.12
Narrogin Primary School	\$23,497.38	0.71
East Narrogin Primary School	\$25,686.57	0.89
Nedlands Primary School	\$5,027.70	0.11
Newdegate Primary School	\$8,064.95	1.24
Nollamara Primary School	\$30,717.35	0.93
Northam Primary School	\$26,665.52	0.95
West Northam Primary School	\$24,625.16	1.40
Nullagine Primary School	\$25,836.66	2.63

School	Dollar amount of 30% SSPRA reduction	Reduction in SSPRA as a % of the total value of the 2013 resources provided to school, including school grant and staffing
Nungarin Primary School	\$5,936.63	0.56
Nyabing Primary School	\$5,587.17	0.92
Ongerup Primary School	\$6,551.39	0.82
Onslow Primary School	\$47,777.72	2.83
Orange Grove Primary School	\$9,113.74	0.57
Osborne Primary School	\$9,657.97	0.47
Palmyra Primary School	\$7,514.27	0.21
Parkerville Primary School	\$5,656.42	0.22
Perenjori Primary School	\$8,762.38	1.04
North Perth Primary School	\$4,622.83	0.14
South Perth Primary School	\$5,824.72	0.17
Pickering Brook Primary School	\$4,043.84	0.30
Picton Primary School	\$15,954.07	0.68
Pingrup Primary School	\$5,501.07	0.72
Pinjarra Primary School	\$37,815.42	0.69
Port Hedland Primary School	\$17,186.17	0.57
Queens Park Primary School	\$20,343.32	0.98
Rangeway Primary School	\$103,953.64	1.90
Redcliffe Primary School	\$18,108.24	0.65
Richmond Primary School	\$4,353.91	0.14
Riverton Primary School	\$6,269.00	0.17
Rockingham Beach Primary School	\$23,014.96	0.56
Rosalie Primary School	\$4,481.20	0.11
Rossmoyne Primary School	\$4,517.84	0.15
Safety Bay Primary School	\$28,283.42	0.60
Salmon Gums Primary School	\$6,046.91	0.51
Sawyers Valley Primary School	\$4,468.50	0.20
Scarborough Primary School	\$5,043.72	0.40
Newborough Primary School	\$5,437.58	0.16
Deanmore Primary School	\$5,020.15	0.14
Serpentine Primary School	\$6,835.05	0.26
Shark Bay School	\$11,029.74	0.76
Fremantle Primary School	\$4,867.51	0.27
Spearwood Primary School	\$15,440.99	0.81
Spencer Park Primary School	\$31,634.51	0.84
South Stirling Primary School	\$4,598.37	0.43
Subiaco Primary School	\$5,003.39	0.11
Swanbourne Primary School	\$7,370.59	0.17
Middle Swan Primary School	\$44,183.17	0.89
Upper Swan Primary School	\$8,010.63	0.29
Swan View Primary School	\$26,779.02	0.86

School	Dollar amount of 30% SSPRA reduction	Reduction in SSPRA as a % of the total value of the 2013 resources provided to school, including school grant and staffing
Tambellup Primary School	\$11,502.28	0.87
Tammin Primary School	\$8,481.17	0.63
Thornlie Primary School	\$32,094.61	0.56
Three Springs Primary School	\$11,290.02	0.96
Tincurrin Primary School	\$4,815.87	0.32
Tranby Primary School	\$29,004.64	1.28
Trayning Primary School	\$6,585.45	0.61
Tuart Hill Primary School	\$6,371.81	0.19
Vasse Primary School	\$13,308.91	0.30
Victoria Park Primary School	\$6,843.95	0.23
East Victoria Park Primary School	\$6,486.49	0.17
Walkaway Primary School	\$2,658.93	0.21
Walpole Primary School	\$8,643.50	0.82
Lake Monger Primary School	\$7,596.65	0.43
Wandering Primary School	\$1,967.92	0.39
Wanneroo Primary School	\$23,751.33	0.47
Watheroo Primary School	\$6,277.49	0.39
Wattle Grove Primary School	\$5,586.51	0.14
Wellstead Primary School	\$5,040.57	0.75
Wembley Downs Primary School	\$4,723.61	0.18
Wembley Primary School	\$5,017.91	0.08
Westminster Primary School	\$22,045.19	1.02
Westminster Junior Primary School	\$21,680.88	0.94
White Gum Valley Primary School	\$5,472.21	0.25
Wickepin Primary School	\$6,343.59	1.27
Wilson Primary School	\$9,894.81	0.36
Wilson Park Primary School	\$15,587.38	1.17
Wiluna Remote Comm School	\$32,093.40	1.90
Woodanilling Primary School	\$4,722.71	0.54
Woodlands Primary School	\$4,370.73	0.13
Woorloo Primary School	\$3,316.07	0.27
Yalgoo Primary School	\$15,676.46	1.37
Yarloop Primary School	\$4,040.63	0.35
Yealering Primary School	\$5,037.31	0.72
Yerecoin Primary School	\$5,266.55	0.85
Yokine Primary School	\$6,337.10	0.23
Yuna Primary School	\$4,950.96	0.67
North Balga Primary School	\$24,215.50	0.84
Kambalda Primary School	\$11,613.24	0.65
Newman Primary School	\$43,413.48	1.41
Kingsley Primary School	\$19,331.70	0.93

School	Dollar amount of 30% SSPRA reduction	Reduction in SSPRA as a % of the total value of the 2013 resources provided to school, including school grant and staffing
Takari Primary School	\$6,908.97	0.29
Bungaree Primary School	\$22,656.42	0.93
Anzac Terrace Primary School	\$12,982.52	0.42
Orelia Primary School	\$28,221.35	1.00
Useless Loop Primary School	\$11,974.00	1.25
Neerigen Brook Primary School	\$33,743.09	0.83
Warriapendi Primary School	\$20,984.02	0.87
Bateman Primary School	\$4,532.75	0.17
Wirrabirra Primary School	\$35,568.60	1.00
North Morley Primary School	\$6,234.48	0.35
Sorrento Primary School	\$4,960.47	0.13
Yale Primary School	\$35,112.65	0.74
Walliston Primary School	\$5,967.96	0.30
Weld Square Primary School	\$8,433.26	0.58
Willetton Primary School	\$6,364.70	0.15
Yakamia Primary School	\$32,064.10	0.72
Scaddan Primary School	\$6,014.82	1.00
Westfield Park Primary School	\$25,085.95	0.96
Camboon Primary School	\$6,779.08	0.18
Glendale Primary School	\$6,700.53	0.23
Karratha Primary School	\$32,173.69	0.78
Lockridge Primary School	\$24,800.45	1.11
East Manjimup Primary School	\$19,118.92	0.70
North Parmelia Primary School	\$26,841.36	0.92
Leeman Primary School	\$7,904.75	0.79
Gibbs Street Primary School	\$21,462.73	0.46
Paraburdoo Primary School	\$33,367.54	1.34
Wickham Primary School	\$43,394.43	1.72
Carcoola Primary School	\$14,669.68	0.80
Tom Price Primary School	\$26,488.23	0.85
Clifton Hills Primary School	\$14,172.34	0.43
Gooseberry Hill Primary School	\$5,859.09	0.19
Nulsen Primary School	\$47,320.91	1.55
South Hedland Primary School	\$72,354.47	2.35
Seaforth Primary School	\$21,835.40	1.00
Pannawonica Primary School	\$15,292.37	1.01
Springfield Primary School	\$5,604.26	0.19
Cervantes Primary School	\$8,377.84	1.03
Padbury Primary School	\$4,830.60	0.37
Warnbro Primary School	\$27,667.18	0.59
Hillarys Primary School	\$5,752.43	0.15

School	Dollar amount of 30% SSPRA reduction	Reduction in SSPRA as a % of the total value of the 2013 resources provided to school, including school grant and staffing
Davallia Primary School	\$7,397.67	0.18
Challis Primary School	\$34,288.98	1.06
Southwell Primary School	\$15,583.41	0.76
East Maddington Primary School	\$30,130.88	0.85
Cascade Primary School	\$7,601.16	1.42
Hillman Primary School	\$29,447.10	0.80
Bull Creek Primary School	\$6,122.48	0.23
Duncraig Primary School	\$5,155.38	0.17
East Wanneroo Primary School	\$15,885.68	0.45
Koondoola Primary School	\$32,497.44	0.59
Shelley Primary School	\$5,714.24	0.17
Baler Primary School	\$71,724.32	1.35
Parkwood Primary School	\$17,840.17	0.36
One Arm Point Remote Com School	\$34,895.36	3.36
Brookman Primary School	\$32,310.00	0.84
Dudley Park Primary School	\$46,447.53	1.02
Phoenix Primary School	\$16,725.41	0.72
South Thornlie Primary School	\$17,199.99	0.44
Burrendah Primary School	\$6,481.98	0.13
Waddington Primary School	\$14,113.70	1.10
South Newman Primary School	\$51,587.02	1.20
Yandeyarra Remote Com School	\$17,162.04	1.14
Kardinya Primary School	\$7,362.03	0.18
Huntingdale Primary School	\$39,654.49	0.67
West Balcatta Primary School	\$5,526.58	0.14
West Greenwood Primary School	\$5,774.10	0.19
Maidens Park Primary School	\$24,567.97	1.12
Woodlupine Primary School	\$20,289.84	0.61
Leinster Primary School	\$20,728.49	1.57
Carine Primary School	\$4,478.27	0.11
Cooloongup Primary School	\$33,022.54	1.08
Flinders Park Primary School	\$15,541.31	0.32
Mount Tarcoola Primary School	\$12,251.36	0.25
Bambara Primary School	\$6,033.23	0.34
Pegs Creek Primary School	\$27,386.60	0.95
North Tom Price Primary School	\$23,863.58	1.03
Forrestdale Primary School	\$9,688.47	0.77
Mullaloo Heights Primary School	\$5,592.74	0.33
Gwynne Park Primary School	\$40,926.01	1.27
Sandstone Primary School	\$9,450.43	1.22
Oberthur Primary School	\$4,617.54	0.12

School	Dollar amount of 30% SSPRA reduction	Reduction in SSPRA as a % of the total value of the 2013 resources provided to school, including school grant and staffing
Falls Road Primary School	\$5,359.11	0.22
Grovelands Primary School	\$33,144.72	1.00
Bramfield Park Primary School	\$20,128.63	0.94
Waggrakine Primary School	\$46,769.28	1.24
East Beechboro Primary School	\$23,555.63	0.64
East Hamersley Primary School	\$6,075.98	0.36
Australind Primary School	\$13,449.06	0.48
Glengarry Primary School	\$5,390.55	0.18
Heathridge Primary School	\$9,157.64	0.54
East Kenwick Primary School	\$37,591.18	1.07
Noranda Primary School	\$7,013.63	0.21
Poynter Primary School	\$4,235.86	0.11
Quinns Rocks Primary School	\$9,374.97	0.29
Braeside Primary School	\$19,859.58	0.79
Challis Early C'hood Ed Centre	\$15,629.86	0.43
Goollelal Primary School	\$4,457.34	0.23
Newton Primary School	\$10,738.91	0.42
Cassia Primary School	\$42,240.70	1.34
Dawson Park Primary School	\$14,348.38	0.44
Illawarra Primary School	\$6,562.85	0.22
Glencoe Primary School	\$16,092.41	0.41
Millars Well Primary School	\$14,909.93	0.59
Edgewater Primary School	\$6,753.32	0.17
Hawker Park Primary School	\$4,870.80	0.22
Leeming Primary School	\$4,820.60	0.19
North Mandurah Primary School	\$31,371.28	0.59
Yangebup Primary School	\$19,234.86	0.74
Creaney Primary School	\$5,007.36	0.17
Rostrata Primary School	\$7,127.72	0.11
Jungdranung Remote Com School	\$15,842.57	2.02
Looma Remote Com School	\$55,216.18	3.96
Spearwood Alternative School	\$2,934.47	0.36
Beldon Primary School	\$15,822.89	0.52
Ashburton Drive Primary School	\$37,377.30	1.11
Eddystone Primary School	\$18,235.18	0.47
Halidon Primary School	\$5,073.42	0.20
Samson Primary School	\$5,916.69	0.19
South Lake Primary School	\$26,784.39	0.76
East Waikiki Primary School	\$38,709.84	1.09
West Leeming Primary School	\$4,348.15	0.12
Mullaloo Beach Primary School	\$4,451.11	0.16

School	Dollar amount of 30% SSPRA reduction	Reduction in SSPRA as a % of the total value of the 2013 resources provided to school, including school grant and staffing
Poseidon Primary School	\$9,566.74	0.36
Bibra Lake Primary School	\$6,238.45	0.21
Marangaroo Primary School	\$16,815.86	0.57
Forest Crescent Primary School	\$10,039.93	0.18
Woodvale Primary School	\$6,410.82	0.17
Tambrey Primary School	\$20,221.44	0.55
Dawul Remote Com School	\$16,813.29	1.70
Clifton Park Primary School	\$5,515.23	0.29
Alinjarra Primary School	\$11,431.72	0.40
Dryandra Primary School	\$28,052.26	0.90
Ocean Reef Primary School	\$6,459.64	0.20
Beechboro Primary School	\$23,784.66	0.82
Edney Primary School	\$20,988.95	0.59
South Padbury Primary School	\$6,590.42	0.30
Banksia Park Primary School	\$5,096.19	0.21
Ballajura Primary School	\$5,265.63	0.11
Dalmain Primary School	\$4,739.05	0.18
Cable Beach Primary School	\$82,276.54	1.62
Falcon Primary School	\$22,150.35	0.44
North Woodvale Primary School	\$5,295.80	0.15
Greenfields Primary School	\$39,713.51	1.06
Winthrop Primary School	\$6,092.03	0.11
Williams Primary School	\$4,352.70	0.27
Wundowie Primary School	\$7,636.14	0.71
Broome Primary School	\$74,084.62	1.70
Goomalling Primary School	\$5,278.31	0.46
Wananami Remote Com School	\$21,068.17	2.19
Burringurrah Remote Com School	\$23,637.80	2.99
Connolly Primary School	\$7,162.88	0.17
Boyare Primary School	\$30,337.65	0.97
Charthouse Primary School	\$24,874.91	0.51
Beaumaris Primary School	\$8,897.94	0.14
West Beechboro Primary School	\$21,910.91	0.52
Muludja Remote Com School	\$22,734.79	2.55
Leda Primary School	\$36,662.60	0.95
Gidgegannup Primary School	\$5,346.46	0.21
Hannans Primary School	\$8,944.16	0.26
Parkfield Primary School	\$17,598.85	0.31
Willandra Primary School	\$48,874.01	0.91
Marri Grove Primary School	\$10,072.99	0.21
Clarkson Primary School	\$29,426.55	0.58

School	Dollar amount of 30% SSPRA reduction	Reduction in SSPRA as a % of the total value of the 2013 resources provided to school, including school grant and staffing
Joondalup Primary School	\$9,181.48	0.18
Koorana Primary School	\$33,440.92	1.12
South Ballajura Primary School	\$28,052.06	0.76
Canning Vale Primary School	\$10,153.60	0.20
Singleton Primary School	\$19,935.14	0.34
Riverside Primary School	\$41,672.88	0.82
Halls Head Primary School	\$16,405.29	0.38
Merriwa Primary School	\$35,514.99	0.98
Kinross Primary School	\$10,521.88	0.21
Port Kennedy Primary School	\$29,443.78	0.62
O'Connor Primary School	\$44,292.88	0.69
Ellenbrook Primary School	\$6,375.26	0.13
Endeavour Primary School	\$29,636.48	0.70
Mindarie Primary School	\$9,051.95	0.15
Rawlinson Primary School	\$34,063.03	0.76
Beeliar Primary School	\$14,416.39	0.33
Currambine Primary School	\$13,419.04	0.20
Little Grove Primary School	\$4,946.09	0.23
DjidiDjidi Aboriginal School	\$29,391.59	1.04
Secret Harbour Primary School	\$8,865.73	0.19
Neerabup Primary School	\$28,655.10	0.75
Ranford Primary School	\$7,989.50	0.16
Atwell Primary School	\$8,008.56	0.12
Landsdale Primary School	\$9,878.46	0.15
Denmark Primary School	\$15,247.73	0.38
Glen Huon Primary School	\$20,008.59	0.56
Ocean Road Primary School	\$16,459.14	0.37
Quinns Beach Primary School	\$23,434.70	0.42
Roebuck Primary School	\$19,707.97	0.35
Dumbleyung Primary School	\$5,414.09	0.52
Moorditj Noongar Com College	\$27,958.69	2.05
Geographe Primary School	\$31,640.30	0.57
Campbell Primary School	\$10,786.42	0.14
Rockingham Lakes Primary School	\$31,079.05	0.54
Dalyellup Primary School	\$15,064.09	0.23
Waikiki Primary School	\$25,557.88	0.68
Carramar Primary School	\$11,746.08	0.17
Butler Primary School	\$13,289.60	0.17
PiaWadjari Remote Com School	\$15,933.04	1.75
Harmony Primary School	\$6,004.15	0.11
Ashdale Primary School	\$16,558.03	0.21

School	Dollar amount of 30% SSPRA reduction	Reduction in SSPRA as a % of the total value of the 2013 resources provided to school, including school grant and staffing
YulgaJinna Remote Com School	\$15,036.30	2.68
Ngalapita Remote Com School	\$16,643.60	2.22
Excelsior Primary School	\$7,416.69	0.17
Coolbellup Community School	\$25,735.96	1.03
Arbor Grove Primary School	\$12,979.70	0.27
Clayton View Primary School	\$14,942.51	0.66
Caralee Community School	\$17,555.87	0.64
Maylands Peninsula Primary Sch	\$8,559.78	0.17
Settlers Primary School	\$18,165.63	0.24
Two Rocks Primary School	\$33,462.17	0.86
Hopetoun Primary School	\$12,221.56	0.72
Bertram Primary School	\$16,116.44	0.26
Caladenia Primary School	\$6,944.48	0.13
East Butler Primary School	\$16,004.96	0.25
Tapping Primary School	\$12,805.37	0.21
Pingelly Primary School	\$13,449.76	0.87
Comet Bay Primary School	\$17,561.69	0.22
Ellen Stirling Primary School	\$12,690.60	0.24
Hocking Primary School	\$21,580.59	0.38
South Halls Head Primary School	\$20,998.04	0.41
Bletchley Park Primary School	\$14,502.38	0.18
Kingston Primary School	\$28,037.16	0.40
Madeley Primary School	\$8,665.05	0.19
Somerly Primary School	\$23,581.93	0.62
Success Primary School	\$22,608.38	0.25
Tjuntjuntjara Remote Community S	\$20,909.04	3.62
Roseworth Primary School	\$37,430.56	0.91
Craigie Heights Primary School	\$13,368.55	0.40
Bannister Creek Primary School	\$21,436.07	0.49
Greenwood Primary School	\$6,367.16	0.19
Hudson Park Primary School	\$25,404.59	0.89
Aubin Grove Primary School	\$6,381.30	0.12
Averley Primary School	\$4,523.43	0.19
Wandina Primary School (New School 2014)	\$3,694.15	2.07
Hammond Park Primary School (New School 2014)	\$3,694.15	0.34
Makybe Rise Primary School	\$17,774.56	0.31
Spring Hill Primary School	\$3,694.15	0.12
Darkan Primary School	\$5,350.95	0.50
Malvern Springs Primary School	\$7,821.23	0.23

School	Dollar amount of 30% SSPRA reduction	Reduction in SSPRA as a % of the total value of the 2013 resources provided to school, including school grant and staffing
Meadow Springs Primary School	\$37,409.14	0.53
Piara Waters Primary School	\$3,694.15	0.10
Baynton West Primary School	\$3,694.15	0.12
Tuart Forest Primary School	\$3,694.15	0.20
Pearsall Primary School	\$4,620.49	0.22
West Byford Primary School	\$3,694.15	0.13
Treendale Primary School (New School 2014)	\$5,359.79	2.52
North Butler Primary School (New School 2014)	\$8,026.68	1.43
North Yanchep Primary School (New School 2014)	\$12,629.87	2.44
Lakelands PS (new)	\$3,694.15	0.00
The Ngaanyatarra Lands School	\$210,722.13	5.20
Carnarvon School Of The Air	\$10,098.44	0.35
Kalgoorlie School Of The Air	\$5,633.03	0.53
Kimberley School Of The Air	\$10,957.38	1.33
Meekatharra School Of The Air	\$6,575.58	0.46
Port Hedland School Of The Air	\$11,188.29	0.86
College Row School	\$3,576.90	0.16
Holland Street School	\$6,592.43	0.23
Gladys Newton School	\$9,068.51	0.13
Kensington Secondary School	\$3,041.21	0.12
Manjimup Ed Sup Centre	\$3,555.15	0.34
Carson Street School	\$13,160.61	0.26
Mosman Park School For Deaf Children	\$3,049.88	0.10
School Of Special Educational Needs: Medical And Mental Health		0.00
Sir David Brand School	\$5,648.59	0.13
Durham Road School	\$18,739.14	0.24
Castlereagh School	\$7,007.77	0.15
Burbridge School	\$5,958.23	0.20
Kenwick School	\$8,671.24	0.15
Malibu School	\$12,428.07	0.18
Cassia Ed Sup Centre	\$4,698.26	0.46
Fremantle Language Development Centre	\$3,694.15	0.12
Avonvale Ed Sup Centre	\$3,918.79	0.15
North East Metro Language Development Centre	\$3,694.15	0.11
West Coast Language Development	\$3,694.15	0.10
Westminster Ed Sup Centre	\$6,401.28	0.33
Coolbellup Learning Centre	\$6,293.49	0.33

School	Dollar amount of 30% SSPRA reduction	Reduction in SSPRA as a % of the total value of the 2013 resources provided to school, including school grant and staffing
Cyril Jackson Senior Campus Es Centre	\$1,847.07	0.11
South East Metro Language Development	\$3,694.15	0.13
Armadale Ed Sup Centre	\$3,336.01	0.09
Kalamunda Ed Sup Centre	\$7,882.66	0.31
Maddington Ed Sup Centre	\$5,565.89	0.31
Roseworth Ed Sup Centre	\$6,237.35	0.27
Beldon Ed Sup Centre	\$6,960.45	0.33
Creaney Ed Sup Centre	\$7,229.58	0.34
Rockingham Beach Ed Sup Centre	\$5,583.60	0.41
Wirrabirra Ed Sup Centre	\$5,002.44	0.37
Cloverdale Ed Sup Centre	\$6,185.70	0.39
East Victoria Park Ed Sup Centre	\$4,264.31	0.48
Mirrabooka SHS Ed Sup Centre	\$3,364.75	0.07
Mount Hawthorn Ed Sup Centre	\$3,977.65	0.30
South Bunbury Ed Sup Centre	\$11,572.61	0.27
Gwynne Park Ed Sup Centre	\$7,722.29	0.29
Eastern Goldfields Es Centre	\$3,281.60	0.15
Leda Ed Sup Centre	\$9,473.56	0.49
North Mandurah Ed Sup Centre	\$6,862.01	0.35
Cannington Com Ed Sup Centre	\$8,393.13	0.13
Joondalup Ed Sup Centre	\$10,085.29	0.38
Spencer Park Ed Sup Centre	\$5,250.40	0.29
Newton Moore Ed Sup Centre	\$3,975.95	0.10
Leeming SHS Ed Sup Centre	\$3,155.53	0.06
Koorana Ed Sup Centre	\$3,667.64	0.33
Canning Vale Ed Sup Centre	\$6,595.21	0.33
South Ballajura Ed Sup Centre	\$8,898.59	0.31
Belridge Ed Sup Centre	\$3,397.46	0.09
Merriwa Ed Sup Centre	\$7,528.60	0.20
Career Enterprise Centre	\$1,847.07	0.10
Riverside Ed Sup Centre	\$8,435.21	0.35
O'Connor Ed Sup Centre	\$14,355.11	0.68
Warnbro Com High School Education Support Centre	\$5,360.74	0.15
Esperance SHS Ed Sup Centre	\$2,339.78	0.08
Rockingham SHS Ed Sup Centre	\$3,615.22	0.12
School Of Special Educational Needs: Disability		0.00
Instrumental Music School Service		0.00
Kalamunda SHS Ed Sup Centre	\$3,129.47	0.15
Albany Secondary Ed Sup Centre	\$3,696.24	0.15

School	Dollar amount of 30% SSPRA reduction	Reduction in SSPRA as a % of the total value of the 2013 resources provided to school, including school grant and staffing
Endeavour Ed Sup Centre	\$6,675.94	0.22
Halls Head Community College Ed Sup Centre	\$3,375.67	0.08
Peel Language Development School	\$3,694.15	0.10
Shenton College Deaf Ed Centre	\$2,541.91	0.09
Geographe Ed Sup Centre	\$5,280.08	0.16
Riverton Ed Sup Centre	\$4,946.09	0.35
Duncraig SHS Ed Sup Centre	\$3,729.64	0.10
School Of Special Educational Needs: Sensory	\$1,847.07	0.02
Total	\$16,001,493.10	1.08

ESTIMATES AND FINANCIAL OPERATIONS COMMITTEE
QUESTIONS ON NOTICE SUPPLEMENTARY INFORMATION

Tuesday, 24 September 2013

Department of Education

Question No. 3: Hon Sue Ellery MLC asked –

I refer to the Education Department budget and the subsequent announcement of a major overhaul of public School funding and ask for each public School in WA –

What is the dollar amount of the funds currently available through School salary pools to support performance management?

Answer: A total of \$3,353,614 was provided to public schools through the school salary pool for performance management for the 2013 calendar year. The allocation to each public school is included in Attachment 1. Information about the funds currently available is held by each school and is not available at a system level. At this time of the year it is likely that individual schools will have drawn upon funds allocated for performance management to varying degrees to suit the needs of their particular contexts.

School	\$ amount provided through school salary pools to support performance management
Albany Senior High School	\$12,970.16
Applecross Senior High School	\$15,758.42
Armadale Senior High School	\$9,398.52
Balcatta Senior High School	\$7,448.15
Belmont City College	\$7,801.48
Bridgetown High School	\$2,695.39
Bunbury Senior High School	\$9,866.93
Busselton Senior High School	\$7,708.60
Churchlands Senior High School	\$18,657.73
Collie Senior High School	\$7,460.26
Cyril Jackson Senior Campus	\$12,598.66
Eastern Hills Snr High School	\$10,737.13
Esperance Senior High School	\$11,865.76
Governor Stirling Snr High School	\$8,643.41
Hamilton Senior High School	\$7,956.94
Hampton Senior High School	\$10,028.45
Harvey Senior High School	\$3,589.81
John Curtin College Of The Arts	\$13,836.32
John Forrest Secondary College	\$10,056.72
Kalamunda Senior High School	\$11,361.00
Katanning Senior High School	\$5,950.04
Kent Street Senior High School	\$11,593.19
Gilmore College	\$12,739.99
Manjimup Senior High School	\$7,436.04
Margaret River Snr High School	\$8,152.79
Melville Senior High School	\$14,219.93
Mirrabooka Senior High School	\$7,855.99
Mount Lawley Senior High School	\$17,040.49
Narrogin Senior High School	\$8,621.20
Newton Moore Senior High School	\$8,275.95
Northam Senior High School	\$8,443.52
Perth Modern School	\$13,123.60
Pinjarra Senior High School	\$8,290.08
South Fremantle Snr High School	\$5,203.00
Rossmoyne Senior High School	\$22,009.29
Como Secondary College	\$8,441.51
Balga Senior High School	\$8,536.40
Morley Senior High School	\$11,278.22
Central Midlands Snr High Sch	\$4,141.00
Hedland Senior High School	\$9,273.34
Rockingham Senior High School	\$10,375.72
Thornlie Senior High School	\$13,032.75
Karratha Senior High School	\$9,309.68
Carine Senior High School	\$15,734.19
Kelmscott Senior High School	\$18,350.84

School	Amount provided through school salary pools to support performance management
North Lake Senior Campus	\$7,102.90
Beverley District High School	\$2,479.35
Boddington District High School	\$4,797.18
Boyup Brook District High School	\$2,786.24
Brookton District High School	\$1,786.83
Broome Senior High School	\$9,239.02
Bruce Rock District High School	\$2,196.69
Bullsbrook District High School	\$11,415.52
Carnamah District High School	\$2,342.06
Corrigin District High School	\$2,315.81
Cunderdin District High School	\$2,281.49
Dalwallinu District High School	\$2,164.39
Denmark High School	\$4,898.13
Derby District High School	\$8,421.32
Donnybrook District High School	\$6,689.00
Dowerin District High School	\$1,762.60
Exmouth District High School	\$6,507.29
Gnowangerup District High Sch	\$2,002.86
Jerramungup District High Sch	\$1,534.45
Kellerberrin District High Sch	\$2,852.87
Kojonup District High School	\$4,177.34
Kulin District High School	\$1,889.80
Lake Grace District High School	\$2,109.87
Meekatharra District High Sch	\$2,782.20
Morawa District High School	\$4,296.47
Mukinbudin District High School	\$1,360.82
Mullewa District High School	\$1,645.50
Nannup District High School	\$2,273.41
Narembeen District High School	\$1,980.65
Norseman District High School	\$2,130.06
Northampton District High Sch	\$1,992.77
Northcliffe District High Sch	\$1,603.10
Pemberton District High School	\$2,685.29
Quairading District High School	\$2,004.88
Ravensthorpe District High Sch	\$2,648.95
Southern Cross Dist High Sch	\$2,065.45
Tom Price Senior High School	\$4,278.29
Toodyay District High School	\$5,863.22
Wagin District High School	\$3,856.32
Warooka District High School	\$4,332.81
Wongan Hills Dist High School	\$4,062.26
Wyalkatchem District High School	\$1,683.86
Wyndham District High School	\$2,816.53
York District High School	\$6,396.24
Girrawheen Senior High School	\$6,236.74
Kambalda West District High Sch	\$5,140.41
Lockridge Senior High School	\$5,314.05

School	\$ amount provided through school salary pools to support performance management
Lynwood Senior High School	\$14,839.77
Newman Senior High School	\$4,581.15
Darling Range Sports College	\$11,407.44
Swan View Senior High School	\$5,473.55
Southern River College	\$7,855.99
Greenwood Senior High School	\$10,452.45
Kununurra District High School	\$12,029.30
Wanneroo Senior High School	\$12,899.49
Willetton Senior High School	\$24,088.88
Yule Brook College	\$2,755.96
Safety Bay Senior High School	\$13,159.95
Duncraig Senior High School	\$14,211.85
Dongara District High School	\$7,024.16
Cecil Andrews Snr High School	\$5,711.80
Lesmurdie Senior High School	\$10,995.56
Warwick Senior High School	\$7,266.44
Gingin District High School	\$6,061.09
Yanchep District High School	\$9,618.59
North Albany Senior High School	\$6,608.24
Ocean Reef Senior High School	\$15,459.61
Schools Of Isolated & Dist Education	
Mount Magnet District High School	\$2,420.80
Leeming Senior High School	\$10,194.01
Woodvale Secondary College	\$18,165.09
Halls Creek District High School	\$6,666.79
Australind Senior High School	\$12,828.83
Coodanup Community College	\$7,688.41
Fitzroy Valley Dist High School	\$5,532.10
Lakeland Senior High School	\$6,210.49
Leonora District High School	\$1,667.71
Belridge Senior High School	\$10,062.78
Jurien Bay District High School	\$5,209.06
Ballajura Community College	\$19,994.32
Warnbro Community High School	\$15,435.38
Clarkson Community High School	\$9,313.72
Eaton Community College	\$5,398.85
Geraldton Senior College	\$12,233.22
Sevenoaks Senior College	\$7,044.35
Halls Head Community College	\$11,276.20
Shenton College	\$17,222.21
Cannington Community College	\$7,236.15
Mindarie Senior College	\$12,247.35
Kinross College	\$11,044.02
Kalbarri District High School	\$4,254.07
Canning Vale College	\$18,841.46
Comet Bay College	\$16,517.57
Ellenbrook Secondary College	\$17,478.62

School	\$ amount provided through school salary pools to support performance management
Cape Naturaliste College	\$6,462.87
Manea Senior College	\$6,723.32
Ashdale Secondary College	\$12,281.67
Eastern Goldfields College	\$6,158.00
Dalyellup College	\$7,904.45
Atwell College	\$15,891.67
Kalgoorlie-Boulder Com Hs	\$9,319.78
Mount Barker Community College	\$9,604.46
Roebourne District High School	\$3,710.95
Baldivis Secondary School	\$2,424.84
Butler College	\$3,121.40
Byford SHS (New School 2014)	
Merredin College	\$9,073.46
Roleystone Com Col	\$8,465.73
John Tonkin College	\$13,515.29
WA College Of Agriculture – Narrogin	\$2,650.97
WA College Of Agriculture – Cunderdin	\$2,848.83
WA College Of Agriculture – Denmark	\$1,883.74
WA College Of Agriculture – Morawa	\$1,467.82
WA College Of Agriculture - Harvey	\$2,860.95
Canning College	
Tuart College	
Carnarvon Community College	\$10,198.05
John Willcock College	\$7,851.95
Adam Road Primary School	\$5,742.08
Albany Primary School	\$5,453.36
Allanson Primary School	\$1,364.85
Allendale Primary School	\$4,064.28
Amaroo Primary School	\$4,984.95
Winterfold Primary School	\$2,951.80
Applecross Primary School	\$4,871.89
Ardross Primary School	\$4,623.55
Armadale Primary School	\$4,793.14
Ashfield Primary School	\$1,193.24
Attadale Primary School	\$3,739.22
Augusta Primary School	\$1,114.50
Avonvale Primary School	\$2,384.46
Babakin Primary School	\$674.35
Badgingarra Primary School	\$726.85
Bakers Hill Primary School	\$1,992.77
Balcatta Primary School	\$1,924.12
Baldivis Primary School	\$7,177.60
Balga Primary School	\$2,580.30
Balingup Primary School	\$759.15
Ballidu Primary School	\$543.12
Bassendean Primary School	\$3,775.56
Bayswater Primary School	\$3,547.41

School	\$ amount provided through school salary pools to support performance management
Beachlands Primary School	\$1,582.91
Beacon Primary School	\$698.58
Beaconsfield Primary School	\$6,495.17
Belmay Primary School	\$2,901.33
Belmont Primary School	\$1,742.41
Bencubbin Primary School	\$740.98
Bentley Primary School	\$2,166.40
Bicton Primary School	\$4,308.58
Bindoon Primary School	\$2,164.39
Binnu Primary School	\$633.97
Bluff Point Primary School	\$4,429.72
Bolgart Primary School	\$664.26
Booragoon Primary School	\$4,245.99
Borden Primary School	\$603.69
Boulder Primary School	\$3,929.01
Boyanup Primary School	\$1,471.86
Bremer Bay Primary School	\$785.40
Brentwood Primary School	\$3,702.88
Bridgetown Primary School	\$4,399.44
Broomehill Primary School	\$902.50
Brunswick Junction Primary School	\$1,356.78
Bunbury Primary School	\$4,528.65
Cooinda Primary School	\$4,435.78
South Bunbury Primary School	\$4,429.72
Buntine Primary School	\$468.41
River Valley Primary School	\$1,310.34
Busselton Primary School	\$3,537.32
West Busselton Primary School	\$4,811.32
Byford Primary School	\$3,603.94
Cadoux Primary School	\$531.00
Calingiri Primary School	\$856.06
Calista Primary School	\$4,738.63
Beckenham Primary School	\$4,999.08
Capel Primary School	\$3,878.53
Carey Park Primary School	\$4,286.37
Carlisle Primary School	\$4,058.22
Castletown Primary School	\$5,566.43
Caversham Primary School	\$1,857.49
Chapman Valley Primary School	\$680.41
Djugerari Remote Com School	\$537.06
Chidlow Primary School	\$2,231.01
Wangkatjunga Remote Com School	\$1,318.42
Churchlands Primary School	\$5,061.67
City Beach Primary School	\$2,152.27
Freshwater Bay Primary School	\$4,161.19
Collier Primary School	\$2,850.85
Como Primary School	\$3,591.83

School	\$ amount provided through school salary pools to support performance management
Condingup Primary School	\$1,088.25
Coogee Primary School	\$5,267.61
South Coogee Primary School	\$4,920.34
Coolbinia Primary School	\$4,122.83
Coolgardie Primary School	\$823.76
Coorow Primary School	\$700.60
Cottesloe Primary School	\$3,612.02
North Cottesloe Primary School	\$4,219.74
Cowaramup Primary School	\$2,412.72
Cranbrook Primary School	\$1,199.30
Cue Primary School	\$573.40
Dalkeith Primary School	\$3,672.59
Dampier Primary School	\$2,142.18
North Dandalup Primary School	\$1,409.27
Dandaragan Primary School	\$1,043.83
Dardanup Primary School	\$2,362.25
Darlington Primary School	\$3,638.27
Sutherland Dianella Primary Sch	\$3,389.93
Dianella Heights Primary School	\$4,415.59
Doubleview Primary School	\$4,130.91
Dunsborough Primary School	\$6,915.13
Dwellingup Primary School	\$1,112.48
Eaton Primary School	\$4,256.09
Eden Hill Primary School	\$4,756.80
Embleton Primary School	\$1,837.30
Eneabba Primary School	\$720.79
Esperance Primary School	\$5,261.56
Fairview Primary School	\$2,947.76
Cloverdale Primary School	\$4,153.12
West Morley Primary School	\$2,616.64
Floreat Park Primary School	\$4,770.93
Forrestfield Primary School	\$1,958.45
Frankland River Primary School	\$850.01
East Fremantle Primary School	\$4,090.53
North Fremantle Primary School	\$1,385.04
Gairdner Primary School	\$858.08
Gascoyne Junction Remote Com School	\$535.04
Kapinara Primary School	\$3,763.45
Geraldton Primary School	\$4,617.49
Glen Forrest Primary School	\$3,414.16
Bayulu Remote Com School	\$1,774.72
Gosnells Primary School	\$4,419.63
Grass Patch Primary School	\$565.32
Mount Claremont Primary School	\$1,724.24
Greenbushes Primary School	\$904.52
Greenmount Primary School	\$4,090.53
Guildford Primary School	\$3,438.38

School	\$ amount provided through school salary pools to support performance management
North Beach Primary School	\$4,361.07
East Hamilton Hill Primary Sch	\$2,017.00
Hampton Park Primary School	\$4,439.82
Harvey Primary School	\$3,696.82
Helena Valley Primary School	\$3,060.83
Herne Hill Primary School	\$2,105.83
Highgate Primary School	\$6,626.41
High Wycombe Primary School	\$5,396.83
Hillcrest Primary School	\$4,215.71
Hilton Primary School	\$1,730.30
Hollywood Primary School	\$3,424.25
Hyden Primary School	\$1,340.63
Inglewood Primary School	\$5,604.79
Yuluma Primary School	\$2,293.60
Jandakot Primary School	\$5,114.17
Jarrahdale Primary School	\$1,483.98
Jerdacuttup Primary School	\$583.50
Jigalong Remote Com School	\$1,572.81
Jolimont Primary School	\$2,539.92
Kalamunda Primary School	\$2,796.34
Kalannie Primary School	\$787.42
Kalgoorlie Primary School	\$5,398.85
East Kalgoorlie Primary School	\$1,950.37
North Kalgoorlie Primary School	\$6,521.42
South Kalgoorlie Primary School	\$6,547.67
Kalumburu Remote Com School	\$2,447.05
Karridale Primary School	\$1,084.21
Karrinyup Primary School	\$5,067.73
Katanning Primary School	\$3,008.33
Kelmscott Primary School	\$4,310.60
Kendenup Primary School	\$1,229.58
Kensington Primary School	\$4,803.24
Kewdale Primary School	\$3,607.98
Kirup Primary School	\$825.78
Kondinin Primary School	\$878.27
Curtin Primary School	\$2,132.08
Koorda Primary School	\$805.59
Kukerin Primary School	\$761.17
Kyilla Primary School	\$2,816.53
La Grange Remote Com School	\$2,959.88
Lake Gwelup Primary School	\$4,948.61
Lake King Primary School	\$676.37
Lancelin Primary School	\$1,685.88
Latham Primary School	\$458.32
Lathlain Primary School	\$4,865.83
Laverton School	\$1,514.26
West Leederville Primary School	\$4,193.50

School	\$ amount provided through school salary pools to support performance management
Lesmurdie Primary School	\$2,933.63
Maddington Primary School	\$2,017.00
Maida Vale Primary School	\$3,916.89
Mandurah Primary School	\$2,881.14
Manjimup Primary School	\$3,313.21
Manning Primary School	\$3,636.25
Marble Bar Primary School	\$916.63
Margaret River Primary School	\$8,241.62
Marmion Primary School	\$3,763.45
Meckering Primary School	\$769.25
Medina Primary School	\$2,186.59
Melville Primary School	\$7,050.40
Menzies Remote Com School	\$732.90
Woodbridge Primary School	\$3,610.00
Midvale Primary School	\$4,460.01
Millen Primary School	\$3,468.67
Mingenew Primary School	\$1,049.89
Mirrabooka Primary School	\$5,132.34
Moora Primary School	\$1,550.60
Moorine Rock Primary School	\$745.02
Morley Primary School	\$2,140.16
Mosman Park Primary School	\$3,507.03
Mount Hawthorn Primary School	\$7,771.19
Mount Helena Primary School	\$2,800.38
Mount Lawley Primary School	\$4,986.97
Mount Lockyer Primary School	\$6,008.59
Mount Manypeaks Primary School	\$652.14
Mount Margaret Remote Com School	\$627.91
Mount Pleasant Primary School	\$4,114.75
Mundaring Primary School	\$3,111.30
Mundijong Primary School	\$1,998.83
Munglinup Primary School	\$504.75
Narrogin Primary School	\$3,525.20
East Narrogin Primary School	\$3,155.72
Nedlands Primary School	\$5,285.78
Newdegate Primary School	\$952.98
Nollamara Primary School	\$5,045.52
Northam Primary School	\$4,538.75
West Northam Primary School	\$1,754.52
Nullagine Primary School	\$916.63
Nungarin Primary School	\$625.89
Nyabing Primary School	\$716.75
Ongerup Primary School	\$605.70
Onslow Primary School	\$2,025.07
Orange Grove Primary School	\$1,609.16
Osborne Primary School	\$2,259.28
Palmyra Primary School	\$5,073.79

School	\$ amount provided through school salary pools to support performance management
Parkerville Primary School	\$3,141.59
Perenjori Primary School	\$747.04
North Perth Primary School	\$4,219.74
South Perth Primary School	\$4,593.26
Pickering Brook Primary School	\$1,514.26
Picton Primary School	\$2,126.02
Pingrup Primary School	\$619.84
Pinjarra Primary School	\$7,327.01
Port Hedland Primary School	\$4,300.50
Queens Park Primary School	\$2,329.94
Rangeway Primary School	\$6,162.04
Redcliffe Primary School	\$2,955.84
Richmond Primary School	\$4,126.87
Riverton Primary School	\$5,548.26
Rockingham Beach Primary School	\$5,065.71
Rosalie Primary School	\$5,200.99
Rossmoyne Primary School	\$4,960.72
Safety Bay Primary School	\$7,215.96
Salmon Gums Primary School	\$710.69
Sawyers Valley Primary School	\$2,065.45
Scarborough Primary School	\$1,530.41
Newborough Primary School	\$4,357.04
Deanmore Primary School	\$4,611.43
Serpentine Primary School	\$2,721.63
Shark Bay School	\$1,423.41
Fremantle Primary School	\$2,469.26
Spearwood Primary School	\$2,715.58
Spencer Park Primary School	\$4,419.63
South Stirling Primary School	\$545.13
Subiaco Primary School	\$5,812.75
Swanbourne Primary School	\$4,837.56
Middle Swan Primary School	\$5,681.51
Upper Swan Primary School	\$4,330.79
Swan View Primary School	\$4,710.36
Tambellup Primary School	\$1,152.86
Tammin Primary School	\$1,033.74
Thornlie Primary School	\$5,524.03
Three Springs Primary School	\$1,261.88
Tincurrin Primary School	\$411.88
Tranby Primary School	\$2,071.51
Trayning Primary School	\$926.73
Tuart Hill Primary School	\$4,298.48
Vasse Primary School	\$5,433.17
Victoria Park Primary School	\$3,751.33
East Victoria Park Primary School	\$3,646.34
Walkaway Primary School	\$1,211.41
Walpole Primary School	\$1,160.93

School	\$ amount provided through school salary pools to support performance management
Lake Monger Primary School	\$2,045.26
Wandering Primary School	\$833.85
Wanneroo Primary School	\$6,014.65
Watheroo Primary School	\$807.61
Wattle Grove Primary School	\$5,043.50
Wellstead Primary School	\$585.51
Wembley Downs Primary School	\$3,926.99
Wembley Primary School	\$7,765.14
Westminster Primary School	\$2,204.77
Westminster Junior Primary School	\$3,147.65
White Gum Valley Primary School	\$3,349.55
Wickepin Primary School	\$827.80
Wilson Primary School	\$3,616.06
Wilson Park Primary School	\$1,443.60
Wiluna Remote CommSchool	\$1,578.87
Woodanilling Primary School	\$537.06
Woodlands Primary School	\$4,264.16
Wooroloo Primary School	\$1,011.53
Yalgoo Primary School	\$589.55
Yarloop Primary School	\$894.42
Yealering Primary School	\$664.26
Yerecoin Primary School	\$722.81
Yokine Primary School	\$3,155.72
Yuna Primary School	\$593.59
North Balga Primary School	\$2,685.29
Kambalda Primary School	\$1,657.61
Newman Primary School	\$3,186.01
Kingsley Primary School	\$2,929.59
Takari Primary School	\$2,400.61
Bungaree Primary School	\$3,472.71
Anzac Terrace Primary School	\$3,805.85
Orelia Primary School	\$3,947.18
Useless Loop Primary School	\$724.83
Neerigen Brook Primary School	\$4,669.98
Warriapendi Primary School	\$2,545.98
Bateman Primary School	\$3,252.63
Wirrabirra Primary School	\$5,063.69
North Morley Primary School	\$2,404.65
Sorrento Primary School	\$4,793.14
Yale Primary School	\$5,966.19
Walliston Primary School	\$2,566.17
Weld Square Primary School	\$1,796.92
Willetton Primary School	\$5,816.78
Yakamia Primary School	\$5,776.40
Scaddan Primary School	\$605.70
Westfield Park Primary School	\$3,149.66
Camboon Primary School	\$4,643.74

School	\$ amount provided through school salary pools to support performance management
Glendale Primary School	\$3,573.66
Karratha Primary School	\$4,383.28
Lockridge Primary School	\$2,665.10
East Manjimup Primary School	\$3,085.06
North Parnellia Primary School	\$3,773.54
Leeman Primary School	\$948.94
Gibbs Street Primary School	\$4,587.20
Paraburdoo Primary School	\$2,969.97
Wickham Primary School	\$2,988.14
Carcoola Primary School	\$1,744.43
Tom Price Primary School	\$3,216.29
Clifton Hills Primary School	\$4,183.40
Gooseberry Hill Primary School	\$4,007.75
Nulsen Primary School	\$3,888.62
South Hedland Primary School	\$3,038.62
Seaforth Primary School	\$2,679.23
Pannawonica Primary School	\$1,603.10
Springfield Primary School	\$4,540.77
Cervantes Primary School	\$831.83
Padbury Primary School	\$1,907.97
Warnbro Primary School	\$5,178.78
Hillarys Primary School	\$5,843.03
Davallia Primary School	\$4,910.25
Challis Primary School	\$3,381.85
Southwell Primary School	\$1,481.96
East Maddington Primary School	\$4,692.19
Cascade Primary School	\$718.77
Hillman Primary School	\$4,411.55
Bull Creek Primary School	\$3,533.28
Duncraig Primary School	\$3,496.94
East Wanneroo Primary School	\$4,233.88
Koondoola Primary School	\$5,946.00
Shelley Primary School	\$4,629.60
Baler Primary School	\$6,652.66
Parkwood Primary School	\$7,688.41
One Arm Point Remote Com School	\$1,330.53
Brookman Primary School	\$4,417.61
Dudley Park Primary School	\$5,534.12
Phoenix Primary School	\$2,556.07
South Thornlie Primary School	\$5,695.64
Burrendah Primary School	\$6,260.97
Waddington Primary School	\$1,504.17
South Newman Primary School	\$4,863.81
Yandeyarra Remote Com School	\$688.48
Kardinya Primary School	\$5,098.02
Huntingdale Primary School	\$8,277.97
West Balcatta Primary School	\$5,055.62

School	Amount provided in 2010-11 school salary pools to support performance management
West Greenwood Primary School	\$4,522.60
Maidens Park Primary School	\$2,418.78
Woodlupine Primary School	\$4,284.35
Leinster Primary School	\$1,762.60
Carine Primary School	\$5,804.67
Cooloongup Primary School	\$4,340.88
Flinders Park Primary School	\$5,818.80
Mount Tarcoola Primary School	\$6,765.72
Bambara Primary School	\$2,491.47
Pegs Creek Primary School	\$3,268.79
North Tom Price Primary School	\$2,622.70
Forrestdale Primary School	\$1,833.27
Mullaloo Heights Primary School	\$2,598.47
Gwynne Park Primary School	\$4,562.98
Sandstone Primary School	\$397.75
Oberthur Primary School	\$5,021.29
Falls Road Primary School	\$2,800.38
Grovelands Primary School	\$4,288.39
Bramfield Park Primary School	\$2,338.02
Waggrakine Primary School	\$5,412.98
East Beechboro Primary School	\$4,181.38
East Hamersley Primary School	\$1,861.53
Australind Primary School	\$3,618.08
Glengarry Primary School	\$3,747.29
Heathridge Primary School	\$1,877.68
East Kenwick Primary School	\$4,128.89
Noranda Primary School	\$3,979.48
Poynter Primary School	\$5,098.02
Quinns Rocks Primary School	\$3,819.98
Braeside Primary School	\$2,753.94
Challis Early Childhood Centre	\$4,425.68
Goollelal Primary School	\$2,830.66
Newton Primary School	\$2,552.04
Cassia Primary School	\$3,521.16
Dawson Park Primary School	\$4,090.53
Illawarra Primary School	\$3,961.31
Glencoe Primary School	\$4,906.21
Millars Well Primary School	\$3,672.59
Edgewater Primary School	\$4,938.51
Hawker Park Primary School	\$2,537.90
Leeming Primary School	\$2,673.18
North Mandurah Primary School	\$5,594.69
Yangebup Primary School	\$3,212.25
Creaney Primary School	\$3,436.37
Rostrata Primary School	\$8,148.75
Jungdranung Remote Com School	\$561.29
Looma Remote Com School	\$1,934.22

School	\$ amount provided through school salary pools to support performance management
Spearwood Alternative School	\$1,350.72
Beldon Primary School	\$3,410.12
Ashburton Drive Primary School	\$5,085.90
Eddystone Primary School	\$5,348.37
Halidon Primary School	\$3,030.54
Samson Primary School	\$4,466.06
South Lake Primary School	\$3,961.31
East Waikiki Primary School	\$5,441.25
West Leeming Primary School	\$4,831.51
Mullaloo Beach Primary School	\$3,297.05
Poseidon Primary School	\$2,862.96
Bibra Lake Primary School	\$4,052.17
Marangaroo Primary School	\$3,525.20
Forest Crescent Primary School	\$7,625.82
Woodvale Primary School	\$4,385.30
Tambrey Primary School	\$5,231.27
Dawul Remote Com School	\$660.22
Clifton Park Primary School	\$2,249.18
Alinjarra Primary School	\$4,262.14
Dryandra Primary School	\$3,846.23
Ocean Reef Primary School	\$3,951.21
Beechboro Primary School	\$4,462.03
Edney Primary School	\$4,770.93
South Padbury Primary School	\$3,329.36
Banksia Park Primary School	\$3,789.69
Ballajura Primary School	\$6,277.12
Dalmain Primary School	\$2,937.67
Cable Beach Primary School	\$5,104.07
Falcon Primary School	\$6,472.97
North Woodvale Primary School	\$4,316.66
Greenfields Primary School	\$5,200.99
Winthrop Primary School	\$7,139.24
Williams Primary School	\$1,302.27
Wundowie Primary School	\$1,148.82
Broome Primary School	\$4,464.04
Goomalling Primary School	\$1,132.67
Wananami Remote Com School	\$819.72
Burringurrah Remote Com School	\$815.68
Connolly Primary School	\$5,154.55
Boyare Primary School	\$4,167.25
Charthouse Primary School	\$7,258.36
Beaumaris Primary School	\$8,435.45
West Beechboro Primary School	\$4,997.06
Muludja Remote Com School	\$771.26
Leda Primary School	\$5,404.91
Gidgegannup Primary School	\$2,802.39
Hannans Primary School	\$4,122.83

School	\$ amount provided through school salary pools to support performance management
Parkfield Primary School	\$7,284.61
Willandra Primary School	\$6,767.74
Marri Grove Primary School	\$6,139.83
Clarkson Primary School	\$5,972.25
Joondalup Primary School	\$6,337.69
Koorana Primary School	\$4,387.32
South Ballajura Primary School	\$5,281.75
Canning Vale Primary School	\$6,196.36
Singleton Primary School	\$7,512.76
Riverside Primary School	\$6,071.18
Halls Head Primary School	\$5,130.32
Merriwa Primary School	\$5,039.46
Kinross Primary School	\$6,666.79
Port Kennedy Primary School	\$7,088.77
O'Connor Primary School	\$8,076.06
Ellenbrook Primary School	\$5,919.75
Endeavour Primary School	\$6,265.01
Mindarie Primary School	\$7,993.28
Rawlinson Primary School	\$6,531.52
Beeliar Primary School	\$5,251.46
Currambine Primary School	\$8,405.16
Little Grove Primary School	\$2,344.08
DjidiDjidi Aboriginal School	\$1,637.42
Secret Harbour Primary School	\$7,462.28
Neerabup Primary School	\$4,690.17
Ranford Primary School	\$6,176.17
Atwell Primary School	\$8,253.74
Landsdale Primary School	\$8,564.67
Denmark Primary School	\$5,267.61
Glen Huon Primary School	\$4,871.89
Ocean Road Primary School	\$5,382.70
Quinns Beach Primary School	\$7,619.77
Roebuck Primary School	\$7,016.08
Dumbleyung Primary School	\$623.88
Moorditj Noongar Com College	\$1,352.74
Geographe Primary School	\$6,949.45
Campbell Primary School	\$10,373.70
Rockingham Lakes Primary School	\$7,359.31
Dalyellup Primary School	\$8,421.32
Waikiki Primary School	\$4,869.87
Carramar Primary School	\$9,089.61
Butler Primary School	\$10,147.57
PiaWadjarri Remote Com School	\$722.81
Harmony Primary School	\$6,941.38
Ashdale Primary School	\$9,840.68
YulgaJinna Remote Com School	\$557.25
Ngalapita Remote Com School	\$506.77

School	\$ amount provided through school salary pools to support performance management
Excelsior Primary School	\$5,447.31
Coolbellup Community School	\$2,925.55
Arbor Grove Primary School	\$6,814.18
Clayton View Primary School	\$1,697.99
Caralee Community School	\$3,414.16
Maylands Peninsula Primary Sch	\$6,454.79
Settlers Primary School	\$10,123.35
Two Rocks Primary School	\$4,847.66
Hopetoun Primary School	\$1,726.26
Bertram Primary School	\$7,928.68
Caladenia Primary School	\$7,163.47
East Butler Primary School	\$8,065.97
Tapping Primary School	\$8,213.36
Pingelly Primary School	\$1,831.25
Comet Bay Primary School	\$10,294.96
Ellen Stirling Primary School	\$6,868.69
Hocking Primary School	\$7,514.78
South Halls Head Primary School	\$6,515.36
Bletchley Park Primary School	\$9,814.44
Kingston Primary School	\$8,675.71
Madeley Primary School	\$5,483.65
Somerly Primary School	\$5,489.70
Success Primary School	\$9,352.08
Tjuntjuntjara Remote Community S	\$868.18
Roseworth Primary School	\$4,704.31
Craigie Heights Primary School	\$3,836.13
Bannister Creek Primary School	\$5,497.78
Greenwood Primary School	\$4,031.97
Hudson Park Primary School	\$3,492.90
Aubin Grove Primary School	\$7,010.02
Averley Primary School	\$3,331.38
Wandina Primary School (New School 2014)	
Hammond Park Primary School (New School 2014)	
Makybe Rise Primary School	\$7,436.04
Spring Hill Primary School	\$4,633.64
Darkan Primary School	\$950.96
Malvern Springs Primary School	\$5,007.16
Meadow Springs Primary School	\$8,699.94
Piara Waters Primary School	\$5,427.11
Baynton West Primary School	\$3,771.52
Tuart Forest Primary School	\$1,928.16
Pearsall Primary School	\$2,021.03
West Byford Primary School	\$3,513.09
Treendale Primary School (New School 2014)	
North Butler Primary School (New School 2014)	
North Yanchep Primary School (New School 2014)	
Lakelands PS (new)	

School	Amount provided through school salary pools to support performance management
The Ngaanyatarru Lands School	\$4,645.76
Carnarvon School Of The Air	\$1,506.19
Kalgoorlie School Of The Air	\$1,126.61
Kimberley School Of The Air	\$1,649.54
Meekatharra School Of The Air	\$1,451.67
Port Hedland School Of The Air	\$1,354.76
College Row School	\$1,330.53
Holland Street School	\$1,611.17
Gladys Newton School	\$3,571.64
Kensington Secondary School	\$1,697.99
Manjimup Ed Sup Centre	\$940.86
Carson Street School	\$2,879.12
Mosman Park School For Deaf Children	\$1,074.12
School Of Special Educational Needs: Medical And Mental Health	
Sir David Brand School	\$2,271.39
Durham Road School	\$5,138.40
Castlereagh School	\$2,636.83
Burbridge School	\$1,534.45
Kenwick School	\$2,731.73
Malibu School	\$3,860.36
Cassia Ed Sup Centre	\$730.88
Fremantle Language Development Centre	\$5,396.83
Avonvale Ed Sup Centre	\$1,445.62
North East Metro Language Development Centre	\$5,410.96
West Coast Language Development	\$6,083.30
Westminster Ed Sup Centre	\$965.09
Coolbellup Learning Centre	\$987.30
Cyril Jackson Senior Campus Es Centre	\$565.32
South East Metro Language Development	\$5,348.37
Armadale Ed Sup Centre	\$1,657.61
Kalamunda Ed Sup Centre	\$1,350.72
Maddington Ed Sup Centre	\$1,090.27
Roseworth Ed Sup Centre	\$981.24
Beldon Ed Sup Centre	\$1,494.07
Creaney Ed Sup Centre	\$1,488.01
Rockingham Beach Ed Sup Centre	\$977.20
Wirrabirra Ed Sup Centre	\$1,057.96
Cloverdale Ed Sup Centre	\$914.61
East Victoria Park Ed Sup Centre	\$654.16
Mirrabooka SHS Ed Sup Centre	\$2,967.95
Mount Hawthorn Ed Sup Centre	\$948.94
South Bunbury Ed Sup Centre	\$2,327.93
Gwynne Park Ed Sup Centre	\$1,372.93
Eastern Goldfields Es Centre	\$1,411.29
Leda Ed Sup Centre	\$1,185.16
North Mandurah Ed Sup Centre	\$1,546.57

School	Amount provided through school salary pools to support performance management
Cannington Com Ed Sup Centre	\$3,995.63
Joondalup Ed Sup Centre	\$1,528.40
Spencer Park Ed Sup Centre	\$1,191.22
Newton Moore Ed Sup Centre	\$2,513.67
Leeming SHS Ed Sup Centre	\$2,323.89
Koorana Ed Sup Centre	\$702.62
Canning Vale Ed Sup Centre	\$1,459.75
South Ballajura Ed Sup Centre	\$1,627.33
Belridge Ed Sup Centre	\$2,844.79
Merriwa Ed Sup Centre	\$1,730.30
Career Enterprise Centre	\$1,635.40
Riverside Ed Sup Centre	\$1,724.24
O'Connor Ed Sup Centre	\$1,350.72
Warnbro Com High School Education Support Centre	\$3,181.97
Esperance SHS Ed Sup Centre	\$807.61
Rockingham SHS Ed Sup Centre	\$2,743.84
School Of Special Educational Needs: Disability	
Instrumental Music School Service	
Kalamunda SHS Ed Sup Centre	\$1,811.06
Albany Secondary Ed Sup Centre	\$1,833.27
Endeavour Ed Sup Centre	\$1,740.39
Halls Head Community College Ed Sup Centre	\$2,154.29
Peel Language Development School	\$6,053.01
Shenton College Deaf Ed Centre	\$1,330.53
Geographe Ed Sup Centre	\$2,043.24
Riverton Ed Sup Centre	\$890.39
Duncraig SHS Ed Sup Centre	\$2,945.74
School Of Special Educational Needs: Sensory	
TOTAL	\$3,353,613.77

ESTIMATES AND FINANCIAL OPERATIONS COMMITTEE
QUESTIONS ON NOTICE SUPPLEMENTARY INFORMATION

Tuesday, 24 September 2013

Department of Education

Question No. 4: Hon Sue Ellery MLC asked –

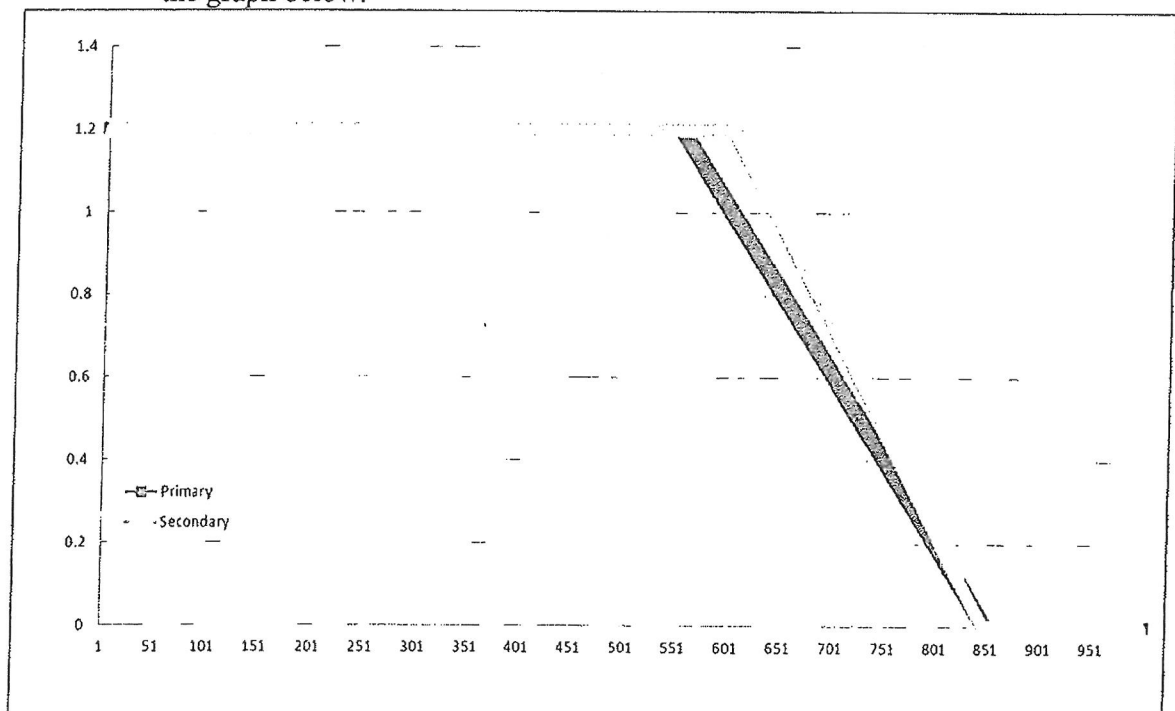
I refer to the Department of Education budget and the subsequent announcement of a major overhaul of public school funding and ask for each public school in WA –

What is the reduction in 2014, in base teacher FTE (full time equivalent) allocation from 2013?

Answer: It is not possible to provide finalised information at this time. The base allocation provided to each public school in 2014 will depend on student enrolments at each school, which vary from year to year.

To enable schools to plan their staffing each year, they have access to an online staffing calculator to predict estimated FTE allocation for the following year. Projections for 2014 are currently being submitted by principals and schools will be staffed on the estimated teacher FTE once the Department finalises the information across the system. Final teacher FTE allocation will be confirmed for each school following the student census on 14 February 2014.

In general terms, for schools with enrolments of less than 550 for primary or 600 for secondary, the impact is 0.3 FTE, being a reduction from 1.5 FTE to 1.2 FTE. The base then tapers between 550 and 850 students for primary schools and between 600 and 850 for secondary schools to a maximum of 1.5 FTE. There is no base allocation for schools with more than 850 students. This is illustrated in the graph below.



ESTIMATES AND FINANCIAL OPERATIONS COMMITTEE

QUESTIONS ON NOTICE SUPPLEMENTARY INFORMATION

Tuesday, 24 September 2013

Department of Education

Question No. 5: Hon Sue Ellery MLC asked –

I refer to the Department of Education budget and the subsequent announcement of a major overhaul of public school funding and ask for each public school in WA –

What is the reduction in 2014, of teacher FTE generated by the per student allocation year level multiplier?

Answer: It is not possible to provide finalised information at this time.

This change has no impact on primary schools. For secondary schools, the impact will be depend on each school's total student enrolment and the number of students enrolled in each year level, which varies from year to year.

To enable schools to plan their staffing each year, they have access to an online staffing calculator to predict estimated FTE allocation for the following year. Projections for 2014 are currently being submitted by principals and schools will be staffed on the estimated teacher FTE once the Department finalises the information across the system. Final teacher FTE allocation will be confirmed for each school following the student census on 14 February 2014.

ESTIMATES AND FINANCIAL OPERATIONS COMMITTEE

QUESTIONS ON NOTICE SUPPLEMENTARY INFORMATION

Tuesday, 24 September 2013

Department of Education

Question No. 6: Hon Sue Ellery MLC asked –

I refer to the Department of Education budget and the subsequent announcement of a major overhaul of public school funding and ask for each public school in WA –

What is the reduction in 2014 of the following student program funding:

(a) teacher FTE allocation in the EAL/D Support program?

Answer: It is not possible to provide finalised information at this time. The FTE allocation for EAL/D support programs depends on a minimum enrolment of 12 eligible students at the school. Principals are currently submitting predicted student enrolments for EAL/D students eligible for support. This will provide schools with estimated teacher FTE allocation for 2014. Final teacher FTE allocations to each school will be confirmed following the student census on 14 February 2014.

(b) teacher FTE allocation in the Intensive English Centres?

Answer: It is not possible to provide finalised information at this time. The FTE allocation for Intensive English Centres (IEC) depends on the student enrolment of eligible students at the school. Principals are currently submitting enrolment data for EAL/D students eligible for IEC support. This will provide schools with estimated teacher FTE allocation for 2014. Final teacher FTE allocations to each school will be confirmed following the student census on 14 February 2014.

(c) teacher FTE allocation using 2014 multiplier for students with special education needs?

Answer: It is not possible to provide finalised information at this time. The FTE allocation depends on the student enrolment of eligible special needs students at the school. Principals are currently submitting enrolment data for special needs students who are eligible for support under the *Schools Plus* program. This will provide schools with estimated teacher FTE allocation for 2014. Final teacher FTE allocations to each school will be confirmed following the student census on 14 February 2014.

ESTIMATES AND FINANCIAL OPERATIONS COMMITTEE

QUESTIONS ON NOTICE SUPPLEMENTARY INFORMATION

Tuesday, 24 September 2013

Department of Education

Question No. 7: Hon Sue Ellery MLC asked –

I refer to the Department of Education budget and the subsequent announcement of a major overhaul of public school funding and ask for each public school in WA –

What is the reduction of registrar/school officer/business manager; library officer and laboratory technician in 2014?

Answer: There is no reduction in the allocation of registrar/school officer/business manager, library officer and laboratory technician in 2014 for public schools in WA. From year to year allocations to these positions may vary dependent on changes to enrolment at individual schools.

ESTIMATES AND FINANCIAL OPERATIONS COMMITTEE

QUESTIONS ON NOTICE SUPPLEMENTARY INFORMATION

Tuesday, 24 September 2013

Department of Education

Question No. 8: Hon Sue Ellery MLC asked –

I refer to the Department of Education budget and the subsequent announcement of a major overhaul of public school funding and ask for each public school in WA –

What is the reduction of Aboriginal and Islander Education Officer FTE using the 2014 year level multiplier?

Answer: It is not possible to provide finalised information at this time. The Aboriginal and Islander Education Officer (AIEO) FTE allocation to each public school will depend on a number of factors, including the student enrolment of eligible students, the concentration of eligible students and the socioeconomic index of the school. Factors such as student enrolments vary from year to year.

To enable schools to plan their staffing each year, they have access to an online staffing calculator to predict estimated FTE allocation for the following year. Projections for 2014 are currently being submitted by principals and schools will be staffed on the estimated AIEO FTE once the Department finalises the information across the system. Final AIEO FTE allocation will be confirmed for each school following the student census on 14 February 2014.

The current allocation of AIEOs is based on an outdated formula which provides a different level of support depending on the year level of the student. The multiplier has been changed to 1.0 for all year levels. This means that Aboriginal students will receive the same level of support regardless of their year level.

The changes will result in approximately 105 fewer AIEOs. However, no permanent AIEO will lose their job, but some may be moved to other schools. The number of AIEOs employed in schools varies each year and AIEOs are regularly redeployed.

ESTIMATES AND FINANCIAL OPERATIONS COMMITTEE
QUESTIONS ON NOTICE SUPPLEMENTARY INFORMATION

Tuesday, 24 September 2013

Department of Education

Question No. 9: Hon Sue Ellery MLC asked –

I refer to the Department of Education budget and the subsequent announcement of a major overhaul of public school funding and ask for each public school in WA –

What is the reduction in the number of education assistants (mainstream) FTE using the per student FTE staffing in 2014?

Answer: It is not possible to provide finalised information at this time. The Education Assistant (mainstream) FTE allocation to schools depends on the student enrolments in Kindergarten to Year 2, which vary from year to year.

To enable schools to plan their staffing each year, they have access to an online staffing calculator to predict estimated FTE allocation for the following year. Projections for 2014 are currently being submitted by principals and schools will be staffed on the estimated EA (mainstream) FTE once the Department finalises the information across the system. Final EA (mainstream) FTE allocation will be confirmed for each school following the student census on 14 February 2014.

It is important to note that the current model for allocating EAs for Kindergarten to Year 2 students is based on the type and number of K-2 classes formed. As a result, a class of 15 pre-primary students would receive an allocation of 1.1 FTE, while a class of 14 students would receive zero EA allocation. Under the new formula, each child receives an EA allocation, so that a class of 14 pre-primary students would receive approximately 0.8 FTE.

The changes will result in approximately 90 fewer EA (mainstream) FTE being employed, however, no permanent EA will lose their job.