

Key Points.

Power History Graph.

- Actual Power usage has been halved since 2004 and is around 60% of 1997 levels.
- Actual Costs have doubled from \$600 pa to \$1200 pa.

Unit Costs Graph.

- Costs have increased at the equivalent of 7% inflation for each year for 16 years. ($.0754 \times 7\%$ compound interest $\times 16$ periods equals .2226). This is more than double the actual inflation rate for those years.
- Access Charges are now around 5 cents out of 22cents per Kwh.

Issues:

- What is the incentive to reduce power usage when price increases more than offset the savings?
- The more usage is reduced the higher the access charges component becomes.
- If usage of power is zero Access Charges are now \$250.
- The Access Charges are supposed to be quarantined for poles & wires. There is enough commercial accounting experience to know this just does not happen. It is as likely as the Fuel Excise and GST components of petrol sales are used for roads.
- The cheaper "Off Peak" usage is determined by what outlets are wired to that meter. Homeowners have no discretion unless certain outlets are rewired to off peak...

Comparisons and Trends.

Over this period, there have been a number of factors which make the comparison of one account to any others, difficult if not impossible.

These are:

- Changes in suppliers
- Variable billing periods
- Changes in Tariff structure (domestic/off peak)
- Seasonality
- Introduction of GST
- Introduction of Access Charges

To the consumer, the primary matter of interest is the Total of the account. Apart from the early years, most billing is roughly quarterly.

Information from the various accounts over time was 'standardised' by using the following techniques:

Usage: Total Kwh used is both Domestic and Off Peak quantities... These were reduced to a daily average for each quarter. This quarterly data was subjected to a "Moving Quarterly Average to discount for seasonal fluctuations.

For the last quarter of each Financial Year, the MQA of Kwh was multiplied by 365 to discount the varying billing periods used by the retailer. The result is the Annual Power Usage in Kwh used in the graphs.

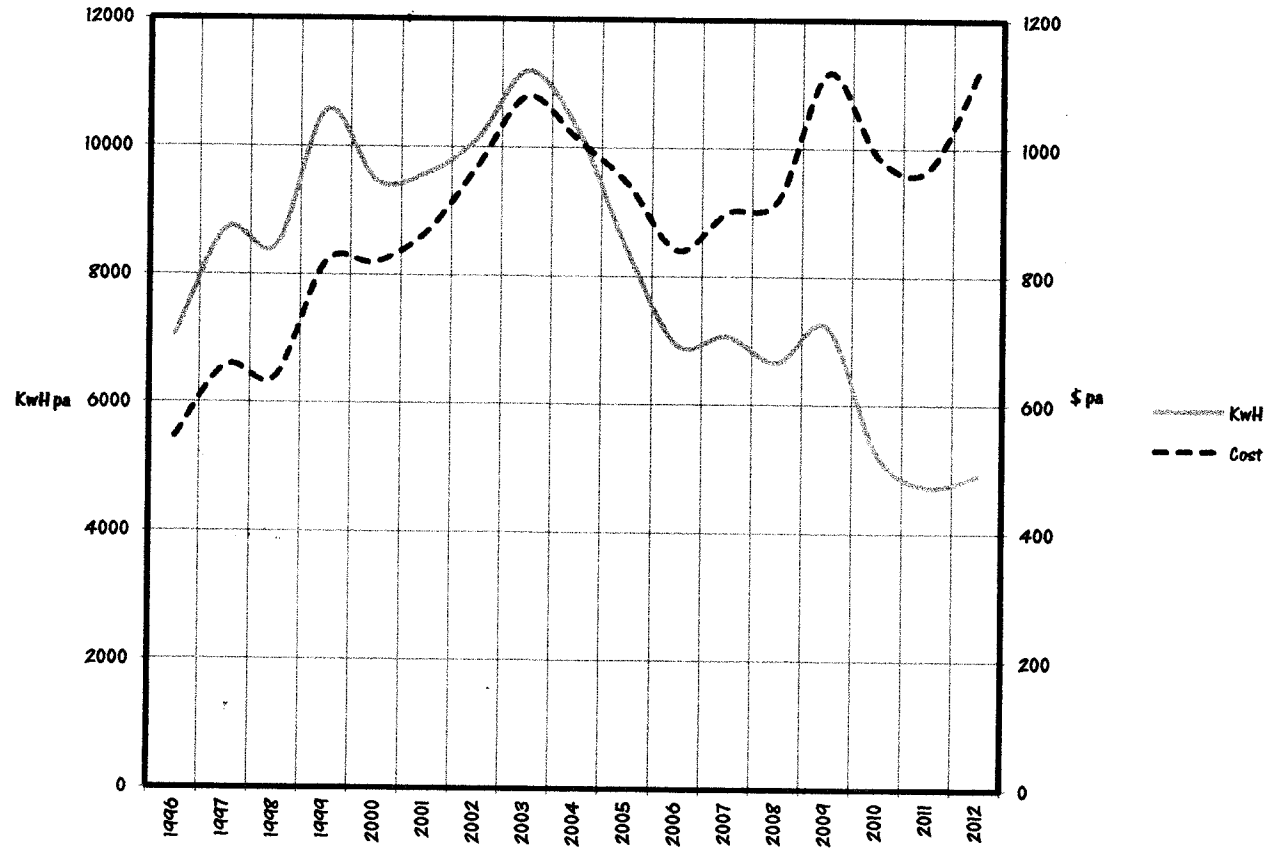
Cost: The \$ value off the account as billed including GST, Access Charges and so forth. Access Charges have only been included from August 2006, but would have commenced prior to that date. The \$ amount was divided by the total KWh in that billing period to derive a "Unit Cost". That unit cost is reflective of the mix of Domestic and Off Peak tariff, Access Charges and GST. At year end the "Unit Cost" was averaged for the year i.e MQA. This Annualised "Unit Cost" was multiplied by the "Annual Power Usage" to generate an Annual \$ Cost.

Compare: This method enables a valid year on year comparison, even though the averaging makes the data a lag indicator.

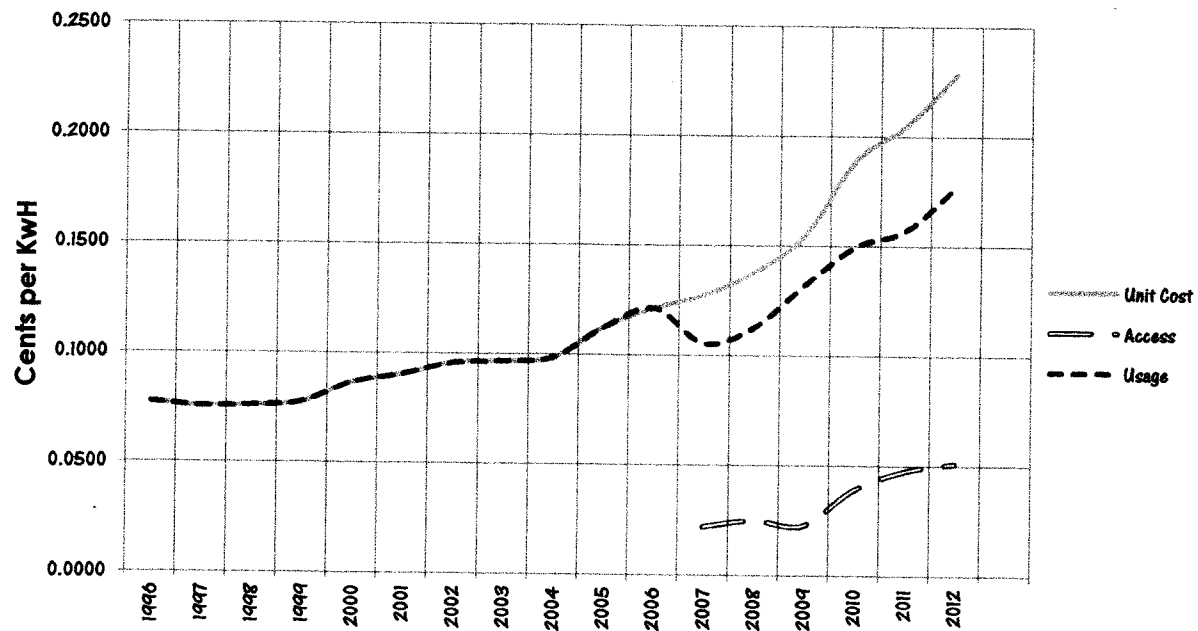
Attachments:

- Graph ~ Power History
- Graph ~ Unit costs
- Data Table

Power History



Unit Costs



Cost includes Access Charges and GST as and when they commenced, but excludes Pensioner Rebates

Annual Kwh	A Unit Cost	Annual Cost	Annual Access	Annual Read	DOMESTIC				OFF PEAK				Access Incl			
					Reading	Usage	Days	Daily Kwh	Reading	Usage	Days	Daily Kwh	Daily Kwh	COST	UNIT COST	incl GST
7058	0.0774	\$546		13-Dec-95	676	428	56	7.64	1066	502	56	8.96	16.61	\$72.00	\$0.0774	
				5-Feb-96	1210	534	54	9.89	1607	541	54	10.02	19.91	\$84.00	\$0.0781	
				11-Apr-96	1776	566	66	8.58	2205	598	66	9.06	17.64	\$90.00	\$0.0773	
				31-May-96	2375	599	50	11.98	2766	561	50	11.22	23.20	\$89.00	\$0.0767	
8714	0.0754	\$657		12-Aug-96	3465	1090	73	14.93	3835	1069	73	14.64	29.58	\$161.00	\$0.0746	
				27-Sep-96	4139	674	46	14.65	4443	608	46	13.22	27.87	\$97.00	\$0.0757	
				5-Dec-96	4937	798	69	11.57	5289	846	69	12.26	23.83	\$123.00	\$0.0748	
				10-Feb-97	5550	613	67	9.15	6021	732	67	10.93	20.07	\$98.00	\$0.0729	
				11-Apr-97	6163	613	60	10.22	6654	633	60	10.55	20.77	\$94.00	\$0.0754	
				6-Jun-97	7013	850	56	15.18	7307	653	56	11.66	26.84	\$119.00	\$0.0792	
8451	0.0758	\$641		12-Aug-97	8236	1223	67	18.25	8278	971	67	14.49	32.75	\$170.40	\$0.0777	
				7-Oct-97	8957	721	56	12.88	9036	758	56	13.54	26.41	\$109.36	\$0.0739	
				5-Dec-97	9543	586	59	9.93	9650	614	59	10.41	20.34	\$90.30	\$0.0753	
				5-Feb-98	10279	736	62	11.87	10335	685	62	11.05	22.92	\$108.70	\$0.0765	
				8-Apr-98	11019	740	62	11.94	11039	704	62	11.35	23.29	\$104.85	\$0.0761	
				11-Jun-98	11749	730	64	11.41	11769	730	64	11.41	22.81	\$110.05	\$0.0754	
10577	0.0775	\$820		12-Aug-98	13400	1651	62	26.63	12784	1015	62	16.37	43.00	\$215.30	\$0.0808	
				12-Oct-98	14565	1165	61	19.10	13714	930	61	15.25	34.34	\$162.10	\$0.0774	
				10-Dec-98	15345	780	59	13.22	14461	747	59	12.66	25.88	\$115.30	\$0.0755	
				10-Feb-99	16250	905	62	14.60	15238	777	62	12.53	27.13	\$129.60	\$0.0771	
				20-Apr-99	17190	940	69	13.62	16042	804	69	11.65	25.28	\$134.95	\$0.0774	
				21-Jun-99	18287	1097	62	17.69	16945	903	62	14.56	32.26	\$154.15	\$0.0771	
9471	0.0784	\$742		25-Aug-99	19776	1489	65	22.91	18074	1129	65	17.37	40.28	\$203.45	\$0.0777	
				2-Nov-99	20631	855	69	12.39	18904	830	69	12.03	24.42	\$127.32	\$0.0756	
				13-Jan-00	21613	982	72	13.64	19863	959	72	13.32	26.96	\$147.60	\$0.0760	
				29-Feb-00	22268	655	47	13.94	20382	519	47	11.04	24.98	\$93.55	\$0.0797	
				28-Apr-00	23141	873	59	14.80	21026	644	59	10.92	25.71	\$122.19	\$0.0805	
				16-Jun-00	23923	782	49	15.96	21600	574	49	11.71	27.67	\$109.34	\$0.0806	
9590	0.0904	\$867		24-Aug-00	25499	1576	69	22.84	22709	1109	69	16.07	38.91	\$234.08	\$0.0872	
				25-Oct-00	26421	922	62	14.87	23593	884	62	14.26	29.13	\$153.08	\$0.0848	
				18-Dec-00	27134	713	54	13.20	24165	572	54	10.59	23.80	\$114.36	\$0.0890	
				21-Feb-01	28015	881	65	13.55	24767	602	65	9.26	22.82	\$139.40	\$0.0940	
				24-Apr-01	28795	780	62	12.58	25347	580	62	9.35	21.94	\$129.90	\$0.0955	
				22-Jun-01	29925	1190	59	20.17	26145	798	59	13.53	33.69	\$183.33	\$0.0922	
10130	0.0956	\$969		24-Aug-01	31253	1268	63	20.13	27038	893	63	14.17	34.30	\$201.92	\$0.0934	
				24-Oct-01	32209	956	61	15.67	27793	755	61	12.38	28.05	\$159.40	\$0.0932	
				27-Dec-01	33139	930	64	14.53	28484	691	64	10.80	25.33	\$154.09	\$0.0951	
				20-Feb-02	33929	790	55	14.36	29003	519	55	9.44	23.80	\$127.94	\$0.0977	
				24-Apr-02	34981	1052	63	16.70	29688	685	63	10.87	27.57	\$167.87	\$0.0966	
				27-Jun-02	36379	1398	64	21.84	30467	779	64	12.17	34.02	\$212.82	\$0.0978	
11188	0.0965	\$1,080		22-Aug-02	37667	1288	56	23.00	31264	797	56	14.23	37.23	\$201.66	\$0.0967	
				26-Nov-02	39153	1486	96	15.48	32674	1410	96	14.69	30.17	\$268.08	\$0.0926	
				26-Feb-03	40444	1291	92	14.03	33607	933	92	10.14	24.17	\$221.64	\$0.0997	
				30-May-03	41896	1452	93	15.61	34729	1122	93	12.06	27.68	\$249.93	\$0.0971	
10294	0.0984	\$1,013		22-Aug-03	43514	1618	84	19.26	35885	1156	84	13.76	33.02	\$274.63	\$0.0990	
				24-Nov-03	44937	1423	94	15.14	37168	1283	94	13.65	28.79	\$262.56	\$0.0970	
				24-Feb-04	46118	1181	92	12.84	38194	1026	92	11.15	23.99	\$220.30	\$0.0998	
				28-May-04	47486	1368	94	14.55	39414	1220	94	12.98	27.53	\$252.92	\$0.0977	
8409	0.1123	\$945		27-Aug-04	49273	1787	91	19.64	40742	1328	91	14.59	34.23	\$319.79	\$0.1027	
				1-Dec-04	50415	1142	96	11.90	41695	953	96	9.93	21.82	\$226.52	\$0.1081	
				23-Feb-05	51173	758	84	9.02	42194	499	84	5.94	14.96	\$151.22	\$0.1203	
6936	0.1211	\$840		30-May-05	52143	970	96	10.10	42822	628	96	6.54	16.65	\$188.97	\$0.1183	
				27-Aug-05	53486	1343	89	15.09	43586	764	89	8.58	23.67	\$249.13	\$0.1182	
				25-Nov-05	54402	916	90	10.18	44307	721	90	8.01	18.19	\$191.31	\$0.1169	
				1-Mar-06	55386	984	96	10.25	44915	608	96	6.33	16.58	\$198.75	\$0.1248	
28-Aug-06	0.1211	\$840		31-May-06	56594	1208	91	13.27	45520	605	91	6.65	19.92	\$225.96	\$0.1246	
				28-Aug-06	58385	1791	89	20.12	46278	758	89	8.52	28.64	\$316.05	\$0.1240	37.74
				23-Nov-06	59295	910	87	10.46	46915	637	87	7.32	17.78	\$195.17	\$0.1262	37.64

Annual Kwh	A Unit Cost	Annual Cost	Annual Access	Read	DOMESTIC				OFF PEAK				Access incl			
					Reading	Usage	Days	Daily Kwh	Reading	Usage	Days	Daily Kwh	Daily Kwh	COST	UNIT COST	incl GST
7069	0.1273	\$900	\$156	1-Mar-07	60164	869	98	8.87	47447	582	98	5.94	14.81	\$190.19	\$0.1311	42.41
				29-May-07	60475	811	89	9.11	48082	585	89	6.57	15.69	\$178.57	\$0.1279	38.51
6689	0.1379	\$918	\$167	31-Aug-07	62553	1578	94	16.79	48853	771	94	8.20	24.99	\$309.58	\$0.1318	42.42
				22-Nov-07	63367	814	83	9.81	44390	537	83	6.47	16.28	\$187.46	\$0.1388	38.24
				28-Feb-08	64185	818	98	8.35	44964	574	98	5.86	14.20	\$197.02	\$0.1415	45.13
				27-May-08	65379	1194	89	13.42	50556	592	89	6.65	20.07	\$249.00	\$0.1394	41.00
7214	0.1549	\$1,118	\$165	25-Aug-08	67232	1853	90	20.89	51286	730	90	8.11	28.70	\$374.18	\$0.1449	41.58
				24-Nov-08	68349	1117	91	12.27	51934	648	91	7.12	19.40	\$261.15	\$0.1480	42.02
				3-Mar-09	69330	981	99	9.91	52311	377	99	3.81	13.72	\$226.40	\$0.1667	45.72
				29-May-09	70392	1062	87	12.21	52723	412	87	4.74	16.94	\$236.07	\$0.1602	35.52
5225	0.1888	\$987	\$205	27-Aug-09	71397	1005	90	11.17	53159	436	90	4.84	16.01	\$260.16	\$0.1805	47.31
				7-Dec-09	72298	901	102	8.83	53669	510	102	5.00	13.83	\$268.49	\$0.1903	57.24
				3-Mar-10	72962	664	86	7.72	54034	365	86	4.24	11.97	\$203.19	\$0.1975	48.25
				4-Jun-10	73667	705	93	7.58	54522	488	93	5.25	12.83	\$223.14	\$0.1870	52.17
4723	0.2050	\$968	\$226	9-Sep-10	74862	1195	97	12.32	55116	594	97	6.12	18.44	\$344.21	\$0.1924	58.32
				30-Nov-10	75376	514	82	6.27	55513	397	82	4.84	11.11	\$185.10	\$0.2032	50.51
				9-Mar-11	75376	494	99	4.99	55873	360	99	3.64	8.63	\$188.84	\$0.2211	60.98
				8-Jun-11	76667	797	91	8.76	56322	449	91	4.93	13.69	\$253.18	\$0.2032	56.06
4907	0.2283	\$1,120	\$251	29-Aug-11	77660	993	82	12.11	56813	491	82	5.99	18.10	\$324.10	\$0.2184	56.09
				1-Dec-11	78315	655	94	6.97	57294	481	94	5.12	12.09	\$262.59	\$0.2312	66.64
				7-Mar-12	78910	595	97	6.13	57748	454	97	4.68	10.81	\$248.13	\$0.2365	68.77
				30-May-12	79503	593	84	7.06	58207	459	84	5.46	12.52	\$238.84	\$0.2270	59.55