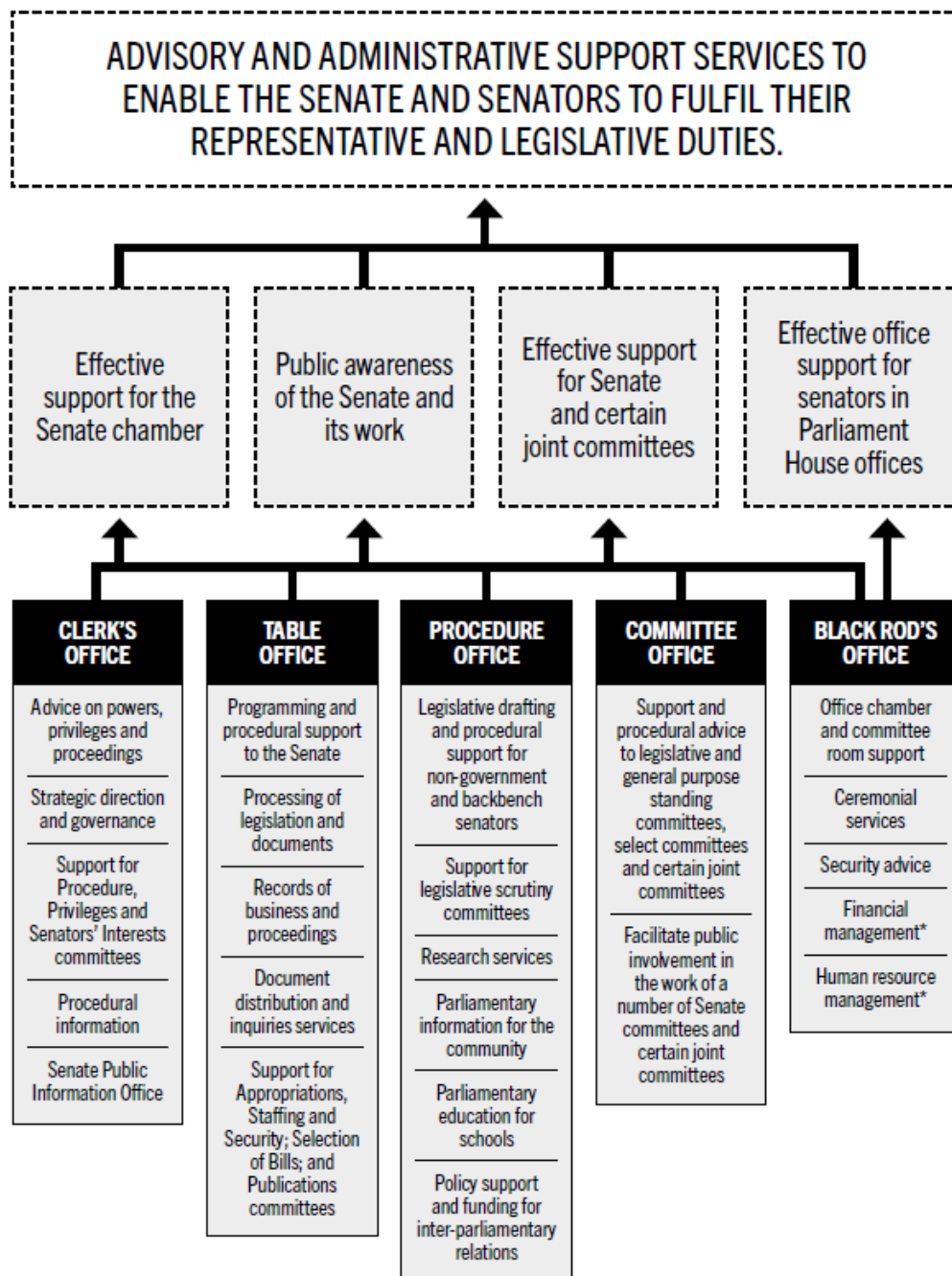


DEPARTMENTAL OVERVIEW

Figure 1



* The department draws on special appropriations for, and administers the payment of, senators' salaries and allowances, superannuation, postage and freight expenses.

DEPARTMENTAL OVERVIEW

The Department of the Senate is one of the four parliamentary departments supporting the Australian Parliament.

It provides advisory and administrative support services to facilitate the work of the Senate and to enable senators to fulfil their representative and legislative duties. In doing so, the department supports the operations of the Senate and its committees, and promotes public awareness of their role and work.

The department is responsible to the Senate through the President of the Senate. Its administrative head is the Clerk of the Senate. The department is organised into five offices, whose responsibilities and outputs are set out in Figure 1 and in the tables on pages 15 to 20.

The appropriation for the department in the 2015-16 Budget is \$21.5m, compared with \$20.6m in 2014-15.

The change in the appropriation comprises an increase of \$1.7 million (ongoing funding of \$0.2m to meet increased fringe benefits tax liabilities and one-off program funding of \$1.5m for secretariat support for committees) offset by a decrease of \$0.64m (cessation of dedicated funding for the Parliamentary Joint Select Committee on the Constitutional Recognition of Aboriginal and Torres Strait Islander Peoples).

The department has third party access to special appropriations to drawdown the funds for the payment of senators' salaries and certain allowances, superannuation, and some postage and freight expenses. The resourcing of these special appropriations is detailed in the statements prepared by the relevant departments.

DEPARTMENTAL RESOURCES

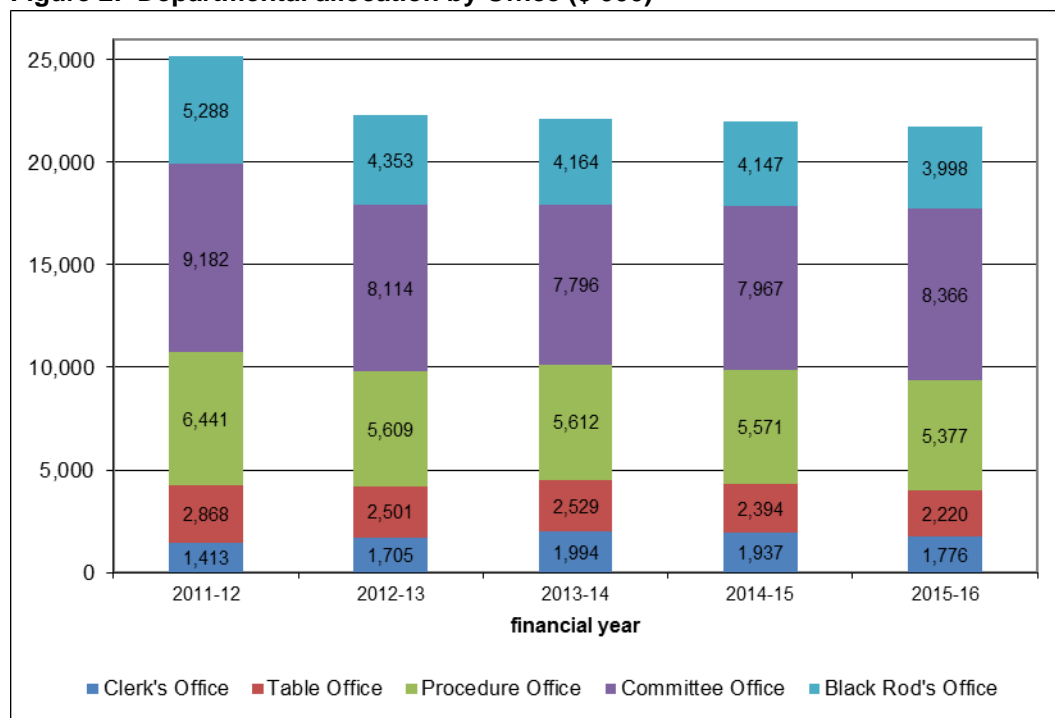
Table 1 shows the total new resources provided to the department in the 2015-16 budget year.

Table 1: Departmental resources 2015-16

Budget estimates for 2015-16 as at Budget May 2015

	Appropriation		Receipts	Total
	Parliamentary Appropriation		\$'000	\$'000
	Bill No. 1 \$'000	Special \$'000		
Department of the Senate				
Departmental appropriations	21,503	-	600	22,103
Total				22,103

Figure 2: Departmental allocation by Office (\$'000)



Figures for 2011-12, 2012-13 and 2013-14 are actual expenses.

Figures for 2014-15 and 2015-16 are estimated actual expenses.

The cost of corporate overheads is allocated across the offices based on average staffing levels.