



BUDGET★
PORTFOLIO BUDGET STATEMENTS 2012–13
BUDGET RELATED PAPER NO. 1.20C

DEPARTMENT OF PARLIAMENTARY
SERVICES

BUDGET INITIATIVES AND EXPLANATIONS OF
APPROPRIATIONS SPECIFIED BY OUTCOMES
AND PROGRAMS BY AGENCY

ISBN 978-0-642-74801-0



With the exception of the Commonwealth Coat of Arms and where otherwise noted all material presented in this document is provided under a Creative Commons Attribution 3.0 Australia (<http://creativecommons.org/licenses/by/3.0/au/>) licence.

The details of the relevant licence conditions are available on the Creative Commons website (accessible using the links provided) as is the full legal code for the CC BY 3.0 AU licence (<http://creativecommons.org/licenses/by/3.0/au/legalcode>).

The document must be attributed as the Portfolio Budget Statement 2012-13
Department of Parliamentary Services

Printed by Canprint Communications



Parliament of Australia
Department of Parliamentary Services

4 May 2012

Senator the Hon. John Hogg
President of the Senate
Parliament House
CANBERRA ACT 2600

The Hon. Mr Peter Slipper MP
Speaker of the House of Representatives
Parliament House
CANBERRA ACT 2600

Dear Mr President
Dear Mr Speaker

Portfolio Budget Statements 2012–13

- 1 I hereby submit Portfolio Budget Statements in support of the 2012–13 Budget for the Department of Parliamentary Services.
- 2 These statements have been developed, and are submitted to the Parliament, as a statement on the outcomes for the department.
- 3 I present these statements to provide accountability to the Parliament and, through it, the public.

Yours sincerely

Russell D. Grove
Acting Secretary

Abbreviations and conventions

The following notation may be used:

NEC/nec	not elsewhere classified
-	nil
..	not zero, but rounded to zero
NA	not applicable (unless otherwise specified)
nfp	not for publication
\$m	\$ million

Figures in tables and in the text may be rounded. Figures in text are generally rounded to one decimal place, whereas figures in tables are generally rounded to the nearest thousand. Discrepancies in tables between totals and sums of components are due to rounding.

Enquiries

Should you have any enquiries regarding this publication please contact Ms Karen Sheppard, Chief Finance Officer, Department of Parliamentary Services on (02) 6277 8818.

A copy of this document can be located on the Australian Government Budget website at: <http://www.budget.gov.au>.

**USER GUIDE
TO THE
PORTFOLIO BUDGET STATEMENTS**

USER GUIDE

The purpose of the 2012–13 Portfolio Budget Statements (PB Statements) is to inform Senators and Members of Parliament of the proposed allocation of resources to Government outcomes by agencies within the portfolio. Agencies receive resources from the annual appropriations acts, special appropriations (including standing appropriations and special accounts), and revenue from other sources.

A key role of the PB Statements is to facilitate the understanding of proposed annual appropriations in Appropriation (Parliamentary Departments) Bill (No. 1) 2012-13. In this sense the PB Statements are Budget related papers and are declared by the Appropriation Acts to be ‘relevant documents’ to the interpretation of the Acts according to section 15AB of the *Acts Interpretation Act 1901*.

The PB Statements provide information, explanation and justification to enable Parliament to understand the purpose of each outcome proposed in the Bills.

CONTENTS

Departmental Overview	3
Agency Resources and Planned Performance	7
Section 1: Agency overview and resources	9
1.1 Strategic Direction Statement	9
1.2 Agency Resource Statement	11
Section 2: Outcomes and planned performance	13
2.1 Outcomes and performance information.....	13
Section 3: Explanatory tables and budgeted financial statements	31
3.1 Explanatory tables.....	31
3.2 Budgeted financial statements	32
Glossary	45

DEPARTMENTAL OVERVIEW

DEPARTMENTAL OVERVIEW

DEPARTMENTAL RESPONSIBILITIES

The Department of Parliamentary Services (DPS) provides direct support to the Australian Parliament. The department reports to the Presiding Officers of the Parliament (the President of the Senate and the Speaker of the House of Representatives).

DEPARTMENTAL SERVICES

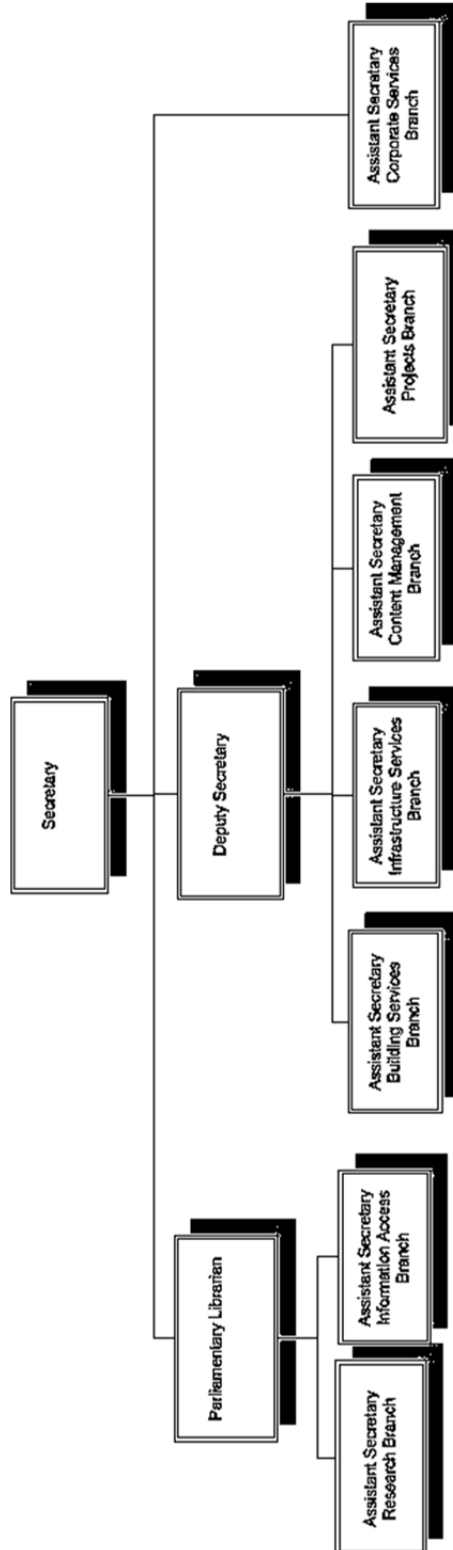
DPS provides a diverse range of services to Senators, Members, other building users and the general public, including:

- library and research services;
- parliamentary records services;
- security services;
- information and communication technology services;
- visitor services, including management of The Parliament Shop and guide service;
- building support services, including building maintenance, landscape and artwork services;
- catering, health and recreation, cleaning and other housekeeping services; and
- corporate services to DPS.

DEPARTMENTAL SENIOR MANAGEMENT STRUCTURE

Figure 1 shows the DPS senior management structure.

Figure 1: Department of Parliamentary Services Senior Management Structure



DEPARTMENTAL RESOURCES

Table 1 shows the total new resources provided to DPS in the 2012–13 budget year.

Table 1: DPS Resources 2012–13

	Appropriation (Parliamentary Departments) Bill No. 1	Receipts	Total
	\$m	\$m	\$m
DPS			
Administered appropriations	12,896	-	12,896
Departmental appropriations	111,739	6,723	118,462
Total:	124,635	6,723	131,358
Resources available for DPS:			131,358

Department of Parliamentary Services

Agency resources and planned performance

DEPARTMENT OF PARLIAMENTARY SERVICES

Section 1: Agency overview and resources

1.1 STRATEGIC DIRECTION STATEMENT

The mission of the Department of Parliamentary Services (DPS) is: *To serve the Australian people by supporting the Parliament and caring for Parliament House.*

DPS achieves its mission by delivering the range of services listed under our two programs.

In addition to the specific deliverables listed in these PB Statements for each of the subprograms, DPS has the following priorities for 2012-13 and future years:

- improving ways of delivering services, particularly through the use of new and emerging technologies;
- improving building security;
- improving information security;
- improving the overall environmental performance of Parliament House;
- improving access to Parliament for people with disabilities, by upgrading IT systems and building infrastructure; and
- developing our staff, with emphasis on leadership, customer focus and dealing with change.

A key enabler for these priorities is a significant capital investment program, including:

- improving preservation of and access to parliamentary information and records by:
- digitising the majority of broadcast records; and
- providing on-line access to broadcast records.
- continuing to renew the Parliamentary Computing Network to ensure compatibility with whole-of-government networks and the internet;
- implementing a wide range of recommended security works; and
- replacing and upgrading ageing heating, cooling and kitchen equipment for Parliament House.

The continuing challenge for DPS is to maintain high quality day-to-day services to Parliament and the Australian people against a background of continuing “operating budget” restraints.

DPS Budget Statements

The Government announced additional savings measures in 2011 resulting in an ongoing reduction in operating funding for DPS from 2012-13 of approximately \$2.6m and a \$2.4m reduction in departmental capital in 2012-13, rising to \$5.4m in the 2014-15 out year.

A reduction in funding for normal DPS operations, coupled with CPI increases will require various cost reduction actions. Other factors contributing to budgetary pressures include:

- the increase in salary levels under the DPS Enterprise Agreement 2011;
- the need to continue to be flexible and responsive to changes in the security environment; and
- increasing demand for access to and support for the latest information and communication technologies.

DPS received additional funding in 2011-12 as a result of the transfer from the Department of Finance and Deregulation (DoFD) to DPS for the Electorate Office IT support function and IT entitlements for former Prime Ministers. Funding for 2012-13 is \$788,000. DPS currently has drawing rights to DoFD's Special Appropriation for all other EOIT costs. It is expected that funding for those costs will be transferred to DPS during 2012-13.

1.2 AGENCY RESOURCE STATEMENT

Table 1.1 shows the total resources from all sources. The table summarises how resources will be applied by outcome and by administered and departmental classification.

Table 1.1: Department of Parliamentary Services Resource Statement — Budget Estimates for 2012–13 as at Budget May 2012

	Estimate of prior year amounts available in 2012-13 \$'000	Proposed at Budget 2012-13 \$'000	Total estimate 2012-13 \$'000	Actual available appropriation 2011-12 \$'000
Ordinary annual services¹				
Departmental appropriation				
Prior year departmental appropriation ²	23,428	-	23,428	-
Departmental appropriation ³	-	111,739	111,739	123,774
s31 Relevant agency receipts ⁴	-	6,723	6,723	6,590
Total	23,428	118,462	141,890	130,364
Administered non-operating				
Administered assets and liabilities ⁵	-	12,896	12,896	12,279
Total				
Total other services	-	12,896	12,896	12,279
Total available annual appropriations	23,428	131,358	154,786	142,643

¹ Appropriation (Parliamentary Departments) Bill (No. 1) 2012-2013.

² Estimated adjusted balance carried forward from previous year

³ Includes an amount of \$9.747m in 2012-13 for the Departmental Capital Budget (refer to table 3.2.5 for further details). For accounting purposes this amount has been designated as 'contributions by owners'.

⁴ s31 Relevant Agency receipts - estimate

⁵ Appropriation (Parliamentary Departments) Bill (No. 1) 2012-2013 (refer to table 3.2.10 for further details). For accounting purposes this amount has been designated as 'contributions by owners'.

Reader note: All figures are GST exclusive.

1.3 BUDGET MEASURES

Budget measures relating to DPS are detailed in Budget Paper No. 2 and are summarised below.

Table 1.2: Department of Parliamentary Services 2012-13 Budget measures

	Program	2011-12 \$'000	2012-13 \$'000	2013-14 \$'000	2014-15 \$'000	2015-16 \$'000
Capital measures						
Parliament House Disability Access — upgrade	2	-	323	725	747	785
Total		-	323	725	747	785
Total capital measures						
Administered		-	323	725	747	785
Total		-	323	725	747	785

Prepared on a Government Finance Statistics (fiscal) basis

Section 2: Outcomes and planned performance

2.1 OUTCOMES AND PERFORMANCE INFORMATION

Parliamentary outcomes are the intended results, impacts or consequences of actions by the Parliament on the Australian community. Commonwealth programs are the primary vehicle by which parliamentary agencies achieve the intended results of their outcome statements. Parliamentary agencies are required to identify the programs which contribute to parliamentary outcomes over the Budget and forward years.

The outcome for DPS is described below together with its related subprograms, specifying the performance indicators and targets used to assess and monitor the performance of DPS in achieving parliamentary outcomes.

Outcome: Occupants of Parliament House are supported by integrated services and facilities, Parliament functions effectively and its work and building are accessible to the public

Outcome 1 Strategy

DPS has one outcome and the strategy to achieve the outcome is included in the Strategic Direction Statement on page 9.

Outcome Expense Statement

Table 2.1 provides an overview of the total expenses for the DPS outcome by program.

Table 2.1: Budgeted Expenses and Resources for Outcome

	2011-12 Estimated actual expenses \$'000	2012-13 Estimated expenses \$'000
Outcome 1: Occupants of Parliament House are supported by integrated services and facilities, Parliament functions effectively and its work and building are accessible to the public		
<u>Program 1 - Parliamentary Services</u>		
Subprogram 1.1: Library Services		
Departmental expenses		
Departmental appropriation ¹	23,019	22,703
Expenses not requiring appropriation in the Budget year ²	2,581	2,242
Total for Subprogram 1.1: Library Services	25,600	24,945
Subprogram 1.2: Building and Occupant Services		
Departmental expenses		
Departmental appropriation ¹	36,787	36,280
Expenses not requiring appropriation in the Budget year ²	5,416	4,921
Total for Subprogram 1.2: Building and Occupant Services	42,203	41,201
Subprogram 1.3: Infrastructure Services		
Departmental expenses		
Departmental appropriation ¹	32,549	32,102
Expenses not requiring appropriation in the Budget year ²	16,343	15,859
Total for Subprogram 1.3: Infrastructure Services	48,892	47,961
Subprogram 1.4 - Parliamentary Records Services		
Departmental expenses		
Departmental appropriation ¹	17,876	17,630
Expenses not requiring appropriation in the Budget year ²	666	415
Total for Subprogram 1.4: Parliamentary Records Services	18,542	18,045
Total for Program 1: Parliamentary Services	135,237	132,152
<u>Program 2 - Parliament House Works Program</u>		
Annual Administered Appropriations		
Administered Assets and Liabilities (Parliamentary Appropriation Bill 1)	12,279	12,896
Expenses not requiring appropriation in the Budget year ²	26,639	26,933
Total for Program 2: Parliament House Works Programs	38,918	39,829
Outcome 1 Totals by appropriation type		
Annual Administered Appropriations		
Administered Assets and Liabilities (Parliamentary Appropriation Bill 1)	12,279	12,896
Departmental expenses		
Departmental appropriation ¹	110,231	108,715
Expenses not requiring appropriation in the Budget year ²	51,645	50,370
Total expenses for Outcome 1	174,155	171,981
	2011-12	2012-13
Average Staffing Level (number)	720	702

¹ Departmental Appropriation combines "Ordinary annual services (Appropriation (Parliamentary Departments) Bill (No. 1) 2012-13)" and "Revenue from independent sources (s31)".

² Expenses not requiring appropriation in the Budget year is made up of Depreciation Expense, Amortisation Expense and Audit Fees.

Contributions to Outcome

Program 1: Parliamentary Services

Subprogram 1.1: Library Services

Subprogram objectives

1.1.1: Research services

- Research services provided to the Parliament include responding to requests from individual clients for information and research services, and the production of general distribution briefs and publications.

1.1.2: Information access services

- Information access services for the Parliament are provided by:
 - acquiring and providing access to information resources in the collection and the Library catalogue;
 - selecting, processing and indexing material for Library and media databases in ParInfo; and
 - publishing print and electronic works of DPS, including the web sites and the Library's catalogue.

Subprogram expenses

Subprogram 1.1	2011-12 Revised budget (\$'000)	2012-13 Budget (\$'000)	2013-14 Forward year 1 (\$'000)	2014-15 Forward year 2 (\$'000)	2015-16 Forward year 3 (\$'000)
Annual departmental expenses:					
Library Services	23,019	22,703	22,902	23,130	23,415
Expenses not requiring appropriation in the Budget year ¹	2,581	2,242	1,778	1,573	1,616
Total subprogram expenses	25,600	24,945	24,680	24,703	25,031

¹ Expenses not requiring appropriation in the Budget year is made up of Depreciation Expense, Amortisation Expense and Audit Fees.

Subprogram Deliverables					
Subprogram 1.1.1 Deliverables					
Deliverables	2011-12 Revised budget	2012-13 Budget	2013-14 Forward year 1	2014-15 Forward year 2	2015-16 Forward year 3
1.1.1 Research services					
Individual client requests	Percentage of primary clients (Senators' and Members' offices, including Ministers' offices) using the service. 100% 100%				
	Number of individual client requests. 14,000 13,000				
Self-service requests	Number of online uses of the Parliamentary Library's publications, including the <i>Parliamentary Handbook</i> , through ParInfo and the Internet. 5,400,000 5,400,000				
Publications	Number of publications produced. 260 260				
Client training and seminars	Attendance at training courses and events (eg Vital Issues seminars). 500 500				
Cost of research services	Average cost per individual client request. Average cost per self-service client request. Total cost of subprogram 1.1.1.				
Subprogram 1.1.2 Deliverables					
Deliverables	2011-12 Revised budget	2012-13 Budget	2013-14 Forward year 1	2014-15 Forward year 2	2015-16 Forward year 3
1.1.2 Information access services					
Material added to Library databases	Number of items added to the Library's Electronic Media Monitoring Service and to ParInfo databases. 140,000 190,000				
Material added to Library collection	Number of new titles (books and serials) added to the Library's catalogue. 4,200 4,000				
	Percentage of titles (books and serials) in Library's collection available to clients online in full text. 32% 34%				
Use of the Library's collection and databases	Use of the collections and databases, including loans from the collection, radio and television programs from the Electronic Media Monitoring Service, and from ParInfo databases. 3,800,000 3,800,000				
Cost of information access services	Average cost per item added to the Library's catalogue. Average cost per item added to the Library's databases. Average cost per use of the Library's databases and catalogue. Total cost of subprogram 1.1.2.				

Subprogram Key Performance Indicators
--

Subprogram 1.1 Key Performance Indicators

Key Performance Indicators	2011-12 Revised budget	2012-13 Budget Target	2013-14 Forward year 1	2014-15 Forward year 2	2015-16 Forward year 3
----------------------------	------------------------------	-----------------------------	------------------------------	------------------------------	------------------------------

1.1.1 Research services

Client satisfaction with requests and Publications

High level of client satisfaction.

95% 95%

Client service delivered to timeliness standard.

95% 90%

Number of complaints from clients.

1.1.2 Information access services

Client satisfaction with information access services

High level of client satisfaction.

95% 95%

New titles (books and serials) added to the Library's catalogue within timeliness service standard.

85% 85%

New items added to the Library's Electronic Media Monitoring Service and the ParlInfo Newspaper Clippings Database within timeliness service standard.

95% 95%

Number of complaints from clients.

Subprogram 1.2: Building and Occupant Services

Subprogram objectives

1.2.1 Security services

- Provision of security and emergency services to occupants of, and visitors to, Parliament House.

1.2.2 Facilities services

- Provision of facilities management, health and wellbeing services and visitor services to occupants of, and visitors to, Parliament House.

Subprogram Expenses

Subprogram 1.2	2011-12 Revised budget (\$'000)	2012-13 Budget (\$'000)	2013-14 Forward year 1 (\$'000)	2014-15 Forward year 2 (\$'000)	2015-16 Forward year 3 (\$'000)
Annual departmental expenses:					
Building and Occupant Services	36,787	36,280	36,599	36,964	37,418
Expenses not requiring appropriation in the Budget year ¹	5,416	4,921	3,890	3,435	3,532
Total Subprogram expenses	42,203	41,201	40,489	40,399	40,950

¹ Expenses not requiring appropriation in the Budget year is made up of Depreciation Expense, Amortisation Expense and Audit Fees.

Subprogram Deliverables					
Subprogram 1.2.1 Deliverables					
Deliverables	2011-12 Revised budget	2012-13 Budget	2013-14 Forward year 1	2014-15 Forward year 2	2015-16 Forward year 3
1.2.1 Security services					
Extent to which security procedures are followed	Percentage of reported security incidents dealt with in accordance with agreed procedures (target: 100%).				
Validation of security procedures	The extent to which each validation was successful (target: 100%). Percentage of security validation program achieved (target: 100%).				
Security incidents	Number of reported security incidents.				
Number of security services	Number of hours of internal guarding (PSS)-Monthly average. Number of hours of external guarding (AFP-UP)-Monthly average. Number of scheduled emergency evacuation exercises completed.				
Performance of security systems	Scheduled availability of operational systems: a) card management system (target: 100%); b) radio communications equipment (target: 100%); c) x-ray equipment/walk-through metal detection (target: 95%); d) CCTV system (target: 98%); e) electronic door locks (target: 99.8%); and f) alarms (target: 99.9%).				
Cost of security services	Staff costs for: a) internal guarding (PSS); b) external guarding (AFP-UP); Direct costs of Pass Office operations. Total cost of subprogram 1.2.1.				

DPS Budget Statements

Subprogram 1.2.2 Deliverables

Deliverables	2011-12 Revised budget	2012-13 Budget	2013-14 Forward year 1	2014-15 Forward year 2	2015-16 Forward year 3
1.2.2 Facilities services					
Functions and events	Total number of functions and events held in Parliament House - Official Visits - Parliamentary - Non-Parliamentary				
Nurses Centre	Number of incidents, accidents and requests for first aid. Number of vaccinations delivered under influenza vaccination program.				
Health and Recreation Centre (HRC)	Number of HRC members, by category: a) Senators and Members (target: 60); b) staff of Senators and Members (target: 16); and c) others (target: 560). Number of casual visits, by category: a) Senators and Members; b) staff of Senators and Members; and c) others. Total number of attendees at classes (target: 4050).				
Community engagement with Parliament House	Total number of visitors 900,000 860,000 Total number of participants in general (public) tours. 70,000 65,000 Total number of participants in school tours. 129,000 120,000 Total number of participants in other tours. 8,000 6,000				
Parliament Shop customers	Total number of purchases from the Parliament Shop (target: 57,000).				
Cost of facilities services	Waste management costs under contracts. Gross revenue from non-catered functions. Gross revenue from: a) Press Gallery licensees; b) catering contractors; and d) other licensees. Management fees paid to catering contractor(s). Nurses Centre: Direct costs. Health and Recreation Centre: Revenue. Health and Recreation Centre: Net costs (direct costs less revenue). Parliament House Visitor Services: Net costs (direct costs less revenue received from paid tours). The Parliament Shop: Revenue (target: \$1.3m). The Parliament Shop: Net profit (target: 10% of revenue). Total cost of subprogram 1.2.2.				

Subprogram Key Performance Indicators
--

Subprogram 1.2 Key Performance Indicators

Key Performance Indicators	2011-12 Revised budget	2012-13 Budget Target	2013-14 Forward year 1	2014-15 Forward year 2	2015-16 Forward year 3
1.2.2 Facilities services					
Customer satisfaction	High level of building occupant and/or user satisfaction with facilities contracts for catering Number of complaints about catering.				
Visitor satisfaction	Number of complaints about Visitor services. Number of complaints about The Parliament Shop. Number of complaints about catering.				

Subprogram 1.3: Infrastructure Services

Subprogram objectives

1.3.1: Building infrastructure services

- The provision of building infrastructure, maintenance services and landscape services and customer support for these services.

1.3.2: IT infrastructure services

- The provision and maintenance of information technology, broadcasting and telecommunications infrastructure and customer support for these services.

Subprogram Expenses

Subprogram 1.3	2011-12 Revised budget ('000)	2012-13 Budget ('000)	2013-14 Forward year 1 \$'000	2014-15 Forward year 2 \$'000	2015-16 Forward year 3 \$'000
Annual departmental expenses:					
Infrastructure Services	32,549	32,102	32,383	32,706	33,108
Expenses not requiring appropriation in the Budget year ¹	16,343	15,859	12,489	11,004	11,317
Total Subprogram expenses	48,892	47,961	44,872	43,710	44,425

¹ Expenses not requiring appropriation in the Budget year is made up of Depreciation Expense, Amortisation Expense and Audit Fees.

Subprogram Deliverables					
Subprogram 1.3.1 Deliverables					
Deliverables	2011-12 Revised budget	2012-13 Budget	2013-14 Forward year 1	2014-15 Forward year 2	2015-16 Forward year 3
1.3.1 Building infrastructure services					
Managing the potential impact on the environment		Electricity consumption (GJ). 88,391		91,286	
		Gas consumption (GJ). 43,165		42,095	
		Greenhouse gas emissions (tonnes CO ₂). 25,080		27,186	
		Total water consumption (kL): 135,812		167,632	
		a) landscape water consumption; and b) building water consumption.			
		Waste recycled as a percentage of total waste generated. 55%		60%	
Maintenance of plant and building fabric		Percentage of planned maintenance achieved (target 85%).			
Maintenance help desk requests		Total number of calls. Number of ad-hoc requests for cleaning, pest control and sanitary services or rectification actions			
Cost of maintenance		Target: Maintenance costs reduced by 1.25% from previous year.			
Cleaning costs under contracts:		a) internal cleaning costs; b) industrial cleaning costs; and c) cost of additional labour (including function set up).			
Cost of energy		Total energy cost.			
Cost of water		Total water cost. Cost of water: \$/ha landscape. Cost of water: building.			
Cost of building infrastructure services		Total cost of subprogram 1.3.1.			

DPS Budget Statements

Subprogram 1.3.2 Deliverables					
Deliverables	2011-12 Revised budget	2012-13 Budget	2013-14 Forward year 1	2014-15 Forward year 2	2015-16 Forward year 3
1.3.2 IT infrastructure services					
High level of critical systems availability					
					The total time that critical systems are unavailable during scheduled service hours, and critical system availability expressed as a percentage of scheduled service hours: a) information technology infrastructure (computing services) (100% availability); b) information technology infrastructure (network) (100% availability); c) broadcast infrastructure (100% availability); and d) telecommunications infrastructure (100% availability). e) wireless infrastructure (100% availability) Critical services are defined as: a) House of Representatives applications: - Chamber applications; and - Table Office applications; b) Senate applications: - Chamber applications; and - Table Office applications; c) Hansard applications; d) Desktop Computing; e) Building Management System (BMS); f) Parliamentary Computing Network (PCN); g) electronic data storage; h) printers; i) e-mail; j) sound reinforcement; k) fixed telephones; l) mobile computing; m) wireless access; n) ParlInfo; and o) DPS applications: - SAP; and - CHRIS21.
Timeliness of incident resolution					Percentage of support requests resolved within service standards as follows (target: 95%): a) immediate priority – response 15 minutes, resolution 2 hours; b) high priority – response 30 minutes, resolution 4 hours; c) medium priority – response 30 minutes, resolution 8 hours; and d) as agreed – response 60 minutes, resolution as agreed.
Support services					Number of support services, by category: a) support desk calls; b) training services; c) consultations; d) total number of registered users on the PCN; e) amount of storage under management; f) emails transmitted across Internet; g) external web accesses from PCN; h) number of telephone calls made; and i) number of facsimiles sent.
Volume of IT services required					Number and percentage change in registered users supported on the PCN.
Cost of IT support infrastructure					Cost per registered user.
Cost of broadcasting infrastructure					Total cost
Cost of telecommunications infrastructure					Total costs.
Cost of IT infrastructure services					Total cost of subprogram 1.3.2.

Subprogram Key Performance Indicators
--

Subprogram 1.3 Key Performance Indicators

Key Performance Indicators	2011-12 Revised budget	2012-13 Budget Target	2013-14 Forward year 1	2014-15 Forward year 2	2015-16 Forward year 3
1.3.1 Building infrastructure services					
Extent to which building condition is maintained			Building Condition Index – the current condition of the building fabric of Parliament House, expressed as a percentage of the original condition (target: 89-92%).		
Extent to which landscape condition is maintained			Landscape Condition Index – the current condition of the landscape surrounding Parliament House expressed as a percentage of the total possible condition (target: 90%).		
Condition and ageing of engineering systems			Engineering Systems Condition Index – the current operation and condition of the engineering systems in Parliament House against the expected decline of those systems through their life cycles (target: 90%).		
Customer satisfaction			High level of building and/or user satisfaction with facilities contracts for cleaning, pest control and sanitary services Number of complaints about cleaning, pest control and sanitary services		
Visitor satisfaction			Number of complaints about cleaning, pest control and sanitary services		
1.3.2 IT infrastructure services					
Customer satisfaction			High level of user satisfaction. Number of user complaints.		

Subprogram 1.4: Parliamentary Records Services

Subprogram objectives

1.4.1: Broadcasting services

- Production of an audio-visual record of proceedings of Parliament (including committees) available for broadcasting and archiving.

1.4.2: Hansard services

- Provision of timely and accurate Hansard record of parliamentary proceedings (including committees).

Subprogram Expenses

Subprogram 1.4	2011-12 Revised budget ('000)	2012-13 Budget \$'000	2013-14 Forward year1 \$'000	2014-15 Forward year2 \$'000	2015-16 Forward year3 \$'000
Annual departmental expenses:					
Parliamentary Records Services	17,876	17,630	17,785	17,962	18,183
Expenses not requiring appropriation in the Budget year ¹	666	415	337	302	310
Total Subprogram expenses	18,542	18,045	18,122	18,264	18,493

¹ Expenses not requiring appropriation in the Budget year is made up of Depreciation Expense, Amortisation Expense and Audit Fees.

Subprogram Deliverables

Subprogram 1.4.1 Deliverables

Deliverables	2011-12 Revised budget	2012-13 Budget	2013-14 Forward year 1	2014-15 Forward year 2	2015-16 Forward year 3
1.4.1 Broadcasting services					
Broadcasting services					
					Hours of material captured on audio-visual record, by category: a) chambers; b) committees (ACT hearings); and c) committees (interstate hearings). Number of other productions. Number of audio-visual services. Number of master control services. Number of requests for extracts of parliamentary broadcast material.
Cost of broadcasting services					Cost per hour of material captured on audio-visual record, by category: a) chambers; b) committees (ACT hearings); and c) committees (interstate hearings). Cost of other productions. Cost recovery from other productions. Total cost of subprogram 1.4.1.

Subprogram 1.4.2 Deliverables

Deliverables	2011-12 Revised budget	2012-13 Budget	2013-14 Forward year 1	2014-15 Forward year 2	2015-16 Forward year 3
1.4.2 Hansard services					
Accuracy of transcription			Error rate as notified by customers: a) chambers; and b) committees. (target: maximum of 5 errors per 100 pages transcribed).		
Timeliness of transcription			Percentage of transcripts delivered for chambers within the following standards: a) individual draft speeches – two hours after speech finishes; b) electronic proof Hansard reports – within three hours after House rises; c) hard copy proof Hansard reports – available in Parliament House by 8.30am the following working day; d) electronic official Hansard – 15 non sitting working days following the last sitting day in the week; and e) hard copy official Hansard – delivered to publisher within 15 non sitting working days following the last sitting day in the week. (target: 95%).		
			Percentage of transcripts delivered for committees within the following standards: a) within 24 hours (next working day); b) 1-3 days; c) 3-5 days; and d) over 5 days. (target: 95%).		
Transcription services			Committee transcripts for priority committees ((a) and (b) above) are negotiated with the Clerk Assistant, Committees. Number of hours transcribed, by category: a) chambers; b) committees (ACT hearings); and c) committees (interstate hearings).		
Questions on Notice			Number of pages of answers to Questions on Notice or Questions in Writing in proof Hansard.		
Cost of Hansard services			Cost per hour transcribed, by category: a) chambers; b) committees (ACT hearings); and c) committees (interstate hearings). Total cost of subprogram 1.4.2.		

Subprogram Key Performance Indicators
--

Subprogram 1.4 Key Performance Indicators

Key Performance Indicators	2011-12 Revised budget	2012-13 Budget Target	2013-14 Forward year 1	2014-15 Forward year 2	2015-16 Forward year 3
<hr/>					
1.4.1 Broadcasting services					
Customer satisfaction	High level of customer satisfaction. Number of customer complaints.				
1.4.2 Hansard services					
Customer satisfaction	High level of customer satisfaction. Number of customer complaints.				

Program 2: Parliament House Works Program

Program objective

Plan, develop and deliver into service:

- a building works program; and
- an artworks conservation and development program.

This subprogram supports the operation of Parliament into the future, while at the same time preserving the design integrity of the architecture, engineering systems, art and landscape that make up Parliament House.

Program Appropriation

Program 2	2011-12 Revised budget ('000)	2012-13 Budget \$'000	2013-14 Forward year1 \$'000	2014-15 Forward year2 \$'000	2015-16 Forward year3 \$'000
Annual Administered Appropriations:					
Parliament House Works Programs	12,279	12,896	13,600	13,906	14,233
Expenses not requiring appropriation in the Budget year ¹	26,639	26,933	27,059	27,191	27,327
Total program expenses	38,918	39,829	40,659	41,097	41,560

¹ Expenses not requiring appropriation in the Budget year is made up of Depreciation Expense and Amortisation Expense.

Program Deliverables

Program 2 Deliverables	2011-12 Revised budget	2012-13 Budget	2013-14 Forward year 1	2014-15 Forward year 2	2015-16 Forward year 3
Parliament House works programs					
Extent to which building projects meet agreed objectives					Client acknowledgement that a project has delivered 90% of agreed business objectives (target: 100% of projects).
Extent to which building projects are completed on time					Projects are delivered to agreed timetables (target: 100% of projects).
Extent to which art collection is developed					Acquisition proposals approved by Art Advisory Committee (target: 100%). Number of new artworks acquired.
Extent to which art collection is conserved					Number of artworks receiving preservation.
Extent to which building projects are completed on budget					Projects are completed within approved total budget (target: 100%).
Extent to which administered funds are expended on building projects					Cost of building projects.
Extent to which administered funds are expended on the art collection					Cost of artworks preservation. Cost of art collection development.

Program Key Performance Indicator
--

Program 2 Key Performance Indicator

	2011-12	2012-13	2013-14	2014-15	2015-16
Key Performance Indicator	Revised budget	Budget Target	Forward year 1	Forward year 2	Forward year 3
Parliament House works programs					
Extent to which design integrity is preserved	Design Integrity Index – the current design features of Parliament House and surrounds, expressed as a percentage of the original design intent (target: 90%).				

Section 3: Explanatory tables and budgeted financial statements

Section 3 presents explanatory tables and budgeted financial statements which provide a comprehensive snapshot of agency finances for the 2012-13 budget year. It explains how budget plans are incorporated into the financial statements and provides further details of the reconciliation between appropriations and program expenses, movements in administered funds, special accounts and government indigenous expenditure.

3.1 EXPLANATORY TABLES

3.1.1 Movement of administered funds between years

Administered funds can be provided for a specified period, for example under annual Appropriation Acts. Funds not used in the specified period with the agreement of the Finance Minister may be moved to a future year. The DPS administered appropriation is provided as Asset and Liability appropriations and funds do not lapse.

3.1.2 Special Accounts

Special Accounts provide a means to set aside and record amounts used for specified purposes. Special Accounts can be created by a Finance Minister's Determination under the FMA Act or under separate enabling legislation. As of 19 October 2010, DPS does not have a Special Account.

3.1.3 Australian Government Indigenous Expenditure

The 2012-13 Australian Government Indigenous Expenditure statement is not applicable because DPS has no indigenous specific expenses.

3.2 BUDGETED FINANCIAL STATEMENTS

3.2.1 Differences in agency resourcing and financial statements

The agency resource statement (Table 1.1) provides a consolidated view of all the resources available to the agency in 2012-13. This includes appropriation receivable that is yet to be drawn down to cover payables and provisions on the balance sheet. The income statement (Table 3.2.1) shows only the operating appropriation provided in 2012-13.

3.2.2 Analysis of budgeted financial statements

Comprehensive Income Statement

DPS is budgeting to spend all available funds in 2012-13, noting that the DPS budget is subject to the same adjustments as the majority of APS agencies. Employee and supplier costs continue to rise at rates higher than the budget supplementation.

Revenue from the sale of goods and rendering of services and rental income is estimated to remain steady.

Total expenses are estimated to decrease by \$3.2 million in 2012-13. The impact of the additional efficiency dividend of 2.5% and annual pay rises from the DPS Enterprise Agreement has necessitated DPS to implement a succession of cost savings measures to manage the growth in employee expenses as well as supplier expenses. These include the planned reduction of the DPS staffing by at least 18 FTE during 2012-13.

Budgeted Balance Sheet

DPS undertook an extensive capital works program in 2011-12 (both administered and departmental), addressing a major backlog of asset replacement as well as completing work relating to funding received over two years in 2010-11 for security works.

Departmental Equity is estimated at \$101.5 million at 30 June 2013, a reduction of \$13 million to that estimated as at 30 June 2012. This is due to the net effect of the \$9.7 million being received for asset replacement in 2012-13 offset by the annual depreciation expenses of \$23.1 million during 2012-13.

Departmental net assets are forecast to decline over the forward estimates period largely as a result of the estimated depreciation charge exceeding revenue to be received for asset replacement, through the Departmental Capital Budget, in 2012-13 and 2013-14. At the end of 2012-13 total assets are estimated at \$101.5 million of which \$27.7 million are financial assets. This compares to total liabilities of \$32.5 million which comprise payables of \$6.3 million and provisions of \$26.2.

DPS administers assets with an estimated value at 30 June 2013 of \$2,141.3 million and will receive \$12.9 million to maintain these assets in 2012-13. DPS received new administered funding in 2012-13, \$2.5 million over four years, to improve disability access.

3.2.3 Budgeted financial statements tables

**Table 3.2.1 Comprehensive Income Statement (Showing Net Cost of Services)
(for the period ended 30 June)**

	Estimated actual	Budget estimate	Forward estimate	Forward estimate	Forward estimate
	2011-12	2012-13	2013-14	2014-15	2015-16
	\$'000	\$'000	\$'000	\$'000	\$'000
EXPENSES					
Employee benefits	66,382	67,384	69,399	71,473	73,610
Suppliers	45,642	41,631	40,570	39,589	38,814
Depreciation and amortisation	23,213	23,137	18,194	16,014	16,475
Total expenses	135,237	132,152	128,163	127,076	128,899
LESS:					
OWN-SOURCE INCOME					
Own-source revenue					
Sale of goods and rendering of services	5,132	5,236	5,341	5,448	5,557
Rental income	1,458	1,487	1,517	1,547	1,578
Other	122	120	120	120	120
Total own-source revenue	6,712	6,843	6,978	7,115	7,255
Gains					
Other	180	180	180	180	180
Total gains	180	180	180	180	180
Total own-source income	6,892	7,023	7,158	7,295	7,435
Net cost of (contribution by) services	128,345	125,129	121,005	119,781	121,464
Revenue from Government	103,641	101,992	102,811	103,767	104,989
Surplus (Deficit) attributable to the Australian Government	(24,704)	(23,137)	(18,194)	(16,014)	(16,475)
OTHER COMPREHENSIVE INCOME					
Total other comprehensive income	-	-	-	-	-
Total comprehensive income (loss)					
Total comprehensive income (loss) attributable to the Australian Government	(24,704)	(23,137)	(18,194)	(16,014)	(16,475)
Note: Impact of Net Cash Appropriation Arrangements	2011-12	2012-13	2013-14	2014-15	2015-16
	\$'000	\$'000	\$'000	\$'000	\$'000
Total Comprehensive Income (loss) less depreciation/amortisation expenses previously funded through revenue appropriations.	(24,704)	(23,137)	(18,194)	(16,014)	(16,475)
plus depreciation/amortisation expenses previously funded through revenue appropriations ¹	23,213	23,137	18,194	16,014	16,475
Total Comprehensive Income² (loss) attributable to DPS	(1,491)	-	-	-	-

¹ From 2010-11, the Government introduced net cash appropriation arrangements where Bill 1 revenue appropriations for the depreciation/amortisation expenses of FMA Act agencies were replaced with a separate capital budget (the Departmental Capital Budget, or DCB) provided through Bill 1 equity appropriations. For information regarding DCBs, please refer to Table 3.2.5 Departmental Capital Budget Statement.

² DPS received the Finance Minister's approval for an operating loss of \$1.491m due to a change in the bond rate affecting employee benefits.

Prepared on Australian Accounting Standards basis.

**Table 3.2.2: Budgeted departmental balance sheet
(as at 30 June)**

	Estimated actual	Budget estimate	Forward estimate	Forward estimate	Forward estimate
	2011-12 \$'000	2012-13 \$'000	2013-14 \$'000	2014-15 \$'000	2015-16 \$'000
ASSETS					
Financial assets					
Cash and cash equivalents	198	198	198	198	198
Trade and other receivables	27,576	27,496	28,488	29,587	29,587
Total financial assets	27,774	27,694	28,686	29,785	29,785
Non-financial assets					
Property, plant and equipment	87,135	82,595	80,995	90,686	100,480
Intangibles	29,991	22,212	15,475	11,283	6,780
Inventories	241	241	241	241	241
Other non-financial assets	1,381	1,381	1,381	1,381	1,381
Total non-financial assets	118,748	106,429	98,092	103,591	108,882
Total assets	146,522	134,123	126,778	133,376	138,667
LIABILITIES					
Payables					
Suppliers	6,280	6,280	6,280	6,280	6,280
Other payables	6	6	6	6	6
Total payables	6,286	6,286	6,286	6,286	6,286
Provisions					
Employee provisions	25,268	26,259	27,251	28,351	28,351
Total provisions	25,268	26,259	27,251	28,351	28,351
Total liabilities	31,554	32,545	33,537	34,637	34,637
Net assets	114,968	101,578	93,241	98,739	104,030
EQUITY					
Parent entity interest					
Contributed equity	154,256	164,003	173,860	195,372	217,138
Reserves	14,939	14,939	14,939	14,939	14,939
Retained surplus (accumulated deficit)	(54,227)	(77,364)	(95,558)	(111,572)	(128,047)
Total parent entity interest	114,968	101,578	93,241	98,739	104,030
Total Equity	114,968	101,578	93,241	98,739	104,030

Prepared on Australian Accounting Standards basis.

Table 3.2.3: Departmental statement of changes in equity — summary of movement (Budget year 2012-13)

	Retained earnings	Asset revaluation reserve	Other reserves	Contributed equity/capital	Total equity
	\$'000	\$'000	\$'000	\$'000	\$'000
Opening balance as at 1 July 2012					
Balance carried forward from previous period	(54,227)	14,939		154,256	114,968
Adjusted opening balance	(54,227)	14,939		154,256	114,968
Comprehensive income					
Surplus (deficit) for the period	(23,137)				(23,137)
Total Comprehensive income	(23,137)	-	-	-	(23,137)
Transactions with owners					
Contributions by owners					
Departmental Capital Budget (DCBs)				9,747	9,747
Sub-total transactions with owners	(77,364)	14,939	-	164,003	101,578
Estimated closing balance as at 30 June 2013	(77,364)	14,939	-	164,003	101,578

Prepared on Australian Accounting Standards basis.

**Table 3.2.4: Budgeted departmental statement of cash flows
(for the period ended 30 June)**

	Estimated actual	Budget estimate	Forward estimate	Forward estimate	Forward estimate
	2011-12 \$'000	2012-13 \$'000	2013-14 \$'000	2014-15 \$'000	2015-16 \$'000
OPERATING ACTIVITIES					
Cash received					
Appropriations	103,788	102,072	101,819	102,667	102,983
Receipts from Government					
Sale of goods and rendering of services	6,590	6,723	6,858	6,995	7,135
Net GST received	6,000	5,235	5,294	6,775	7,085
Other	122	120	120	120	120
Total cash received	116,500	114,150	114,091	116,557	117,323
Cash used					
Employees	63,916	66,393	68,407	70,373	73,610
Suppliers	45,537	41,451	40,390	39,409	38,634
Net GST paid	6,000	5,235	5,294	6,775	5,079
Total cash used	115,453	113,079	114,091	116,557	117,323
Net cash from (used by) operating activities	1,047	1,071	-	-	-
INVESTING ACTIVITIES					
Cash received					
Proceeds from sales of PP&E and intangibles	81	-	-	-	-
Total cash received	81	-	-	-	-
Cash used					
Purchase of property, plant and equipment	21,261	10,818	9,857	21,512	21,766
Total cash used	21,261	10,818	9,857	21,512	21,766
Net cash from (used by) investing activities	(21,180)	(10,818)	(9,857)	(21,512)	(21,766)
FINANCING ACTIVITIES					
Cash received					
Contributed equity	20,133	9,747	9,857	21,512	21,766
Total cash received	20,133	9,747	9,857	21,512	21,766
Net cash from (used by) financing activities	20,133	9,747	9,857	21,512	21,766
Cash and cash equivalents at the end of the reporting period	198	198	198	198	198

Prepared on Australian Accounting Standards basis.

Table 3.2.5: Departmental Capital Budget Statement

	Estimated actual	Budget estimate	Forward estimate	Forward estimate	Forward estimate
	2011-12 \$'000	2012-13 \$'000	2013-14 \$'000	2014-15 \$'000	2015-16 \$'000
NEW CAPITAL APPROPRIATIONS					
Capital budget - Bill 1 (DCB)	20,133	9,747	9,857	21,512	21,766
Total new capital appropriations	20,133	9,747	9,857	21,512	21,766
Provided for:					
Purchase of non-financial assets	20,133	9,747	9,857	21,512	21,766
Total Items	20,133	9,747	9,857	21,512	21,766
PURCHASE OF NON-FINANCIAL ASSETS					
Funded by capital appropriation - DCB ¹	21,261	10,818	9,857	21,512	21,766
TOTAL	21,261	10,818	9,857	21,512	21,766
RECONCILIATION OF CASH USED TO ACQUIRE ASSETS TO ASSET MOVEMENT TABLE					
Total purchases	21,261	10,818	9,857	21,512	21,766
Total cash used to acquire assets	21,261	10,818	9,857	21,512	21,766

¹ Includes purchases from current and previous years' Departmental Capital Budgets (DCBs).

Prepared on Australian Accounting Standards basis.

Table 3.2.6: Statement of Asset Movements (2012-13)

	Other property, plant and equipment \$'000	Computer software and intangibles \$'000	Total \$'000
As at 1 July 2012			
Gross book value	278,220	66,541	344,761
Accumulated depreciation/amortisation and impairment	(191,085)	(36,550)	(227,635)
Opening net book balance	87,135	29,991	117,126
CAPITAL ASSET ADDITIONS			
Estimated expenditure on new or replacement assets			
By purchase - appropriation ordinary annual services ¹	9,311	1,507	10,818
Total additions	9,311	1,507	10,818
Other movements			
Depreciation/amortisation expense	(13,851)	(9,286)	(23,137)
Total other movements	(13,851)	(9,286)	(23,137)
As at 30 June 2013			
Gross book value	287,531	68,048	355,579
Accumulated depreciation/amortisation and impairment	(204,936)	(45,836)	(250,772)
Closing net book balance	82,595	22,212	104,807

¹"Appropriation ordinary annual services" refers to funding provided through Appropriation (Parliamentary Departments) Bill (No. 1) 2012-2013 for depreciation / amortisation expenses, DCBs or other operational expenses.

Prepared on Australian Accounting Standards basis.

Table 3.2.7: Schedule of budgeted income and expenses administered on behalf of Government (for the period ended 30 June)

	Estimated actual	Budget estimate	Forward estimate	Forward estimate	Forward estimate
	2011-12 \$'000	2012-13 \$'000	2013-14 \$'000	2014-15 \$'000	2015-16 \$'000
EXPENSES ADMINISTERED ON BEHALF OF GOVERNMENT					
Depreciation and amortisation	26,639	26,933	27,059	27,191	27,327
Total expenses administered on behalf of Government	26,639	26,933	27,059	27,191	27,327
LESS:					
OWN-SOURCE INCOME					
Gains					
Sale of assets	5	5	5	10	10
Total gains administered on behalf of Government	5	5	5	10	10
Total own-sourced income administered on behalf of Government	5	5	5	10	10
Net Cost of (contribution by) services					
Surplus (Deficit)	(26,634)	(26,928)	(27,054)	(27,181)	(27,317)
Total comprehensive income (loss)	(26,634)	(26,928)	(27,054)	(27,181)	(27,317)

Prepared on Australian Accounting Standards basis.

Table 3.2.8: Schedule of budgeted assets and liabilities administered on behalf of Government (as at 30 June)

	Estimated actual	Budget estimate	Forward estimate	Forward estimate	Forward estimate
	2011-12 \$'000	2012-13 \$'000	2013-14 \$'000	2014-15 \$'000	2015-16 \$'000
ASSETS					
Financial assets					
Trade and other receivables	369	136	143	147	150
Total financial assets	369	136	143	147	150
Non-financial assets					
Land and buildings	2,070,577	2,056,775	2,043,503	2,030,407	2,017,505
Property, plant and equipment	5,885	5,050	4,213	3,374	2,532
Other non-financial assets	78,758	79,358	80,008	80,658	81,308
Total non-financial assets	2,155,220	2,141,183	2,127,724	2,114,439	2,101,345
Total assets administered on behalf of Government	2,155,589	2,141,319	2,127,867	2,114,586	2,101,495
LIABILITIES					
Payables					
Suppliers	72	72	72	72	72
Total payables	72	72	72	72	72
Provisions					
Other provisions	369	136	143	147	150
Total provisions	369	136	143	147	150
Total liabilities administered on behalf of Government	441	208	215	219	222
Net assets/(liabilities)	2,155,148	2,141,111	2,127,652	2,114,367	2,101,273

Prepared on Australian Accounting Standards basis.

**Table 3.2.9: Schedule of budgeted administered cash flows
(for the period ended 30 June)**

	Estimated actual	Budget estimate	Forward estimate	Forward estimate	Forward estimate
	2011-12 \$'000	2012-13 \$'000	2013-14 \$'000	2014-15 \$'000	2015-16 \$'000
OPERATING ACTIVITIES					
Cash received					
Net GST received	3,913	1,523	1,353	1,388	1,420
Total cash received	3,913	1,523	1,353	1,388	1,420
Cash used					
Suppliers	3,502	1,290	1,360	1,391	1,423
Total cash used	3,502	1,290	1,360	1,391	1,423
Net cash from (used by) operating activities	411	233	(7)	(3)	(3)
INVESTING ACTIVITIES					
Cash received					
Proceeds from sale of property, plant and equipment	5	5	5	10	10
Total cash received	5	5	5	10	10
Cash used					
Purchase of property, plant and equipment	35,021	12,896	13,600	13,906	14,233
Total cash used	35,021	12,896	13,600	13,906	14,233
Net cash from (used by) investing activities	(35,016)	(12,891)	(13,595)	(13,896)	(14,223)
Net increase (decrease) in cash held	(34,605)	(12,658)	(13,602)	13,899	(14,226)
Cash and cash equivalents at beginning of reporting period	-	-	-	-	-
Cash from Official Public Account for:					
- Assets and Liabilities Appropriations	35,021	12,896	13,600	13,906	14,233
- GST Annotations Appropriations	3,502	1,290	1,360	1,391	1,423
	38,523	14,186	14,960	15,297	15,656
Cash to Official Public Account for:					
- GST Annotations Returned	3,913	1,523	1,353	1,388	1,420
- Other	5	5	5	10	10
	3,918	1,528	1,358	1,398	1,430
Cash and cash equivalents at end of reporting period	-	-	-	-	-

Prepared on Australian Accounting Standards basis.

Table 3.2.10: Schedule of Administered Capital Budget

	Estimated actual	Budget estimate	Forward estimate	Forward estimate	Forward estimate
	2011-12	2012-13	2013-14	2014-15	2015-16
	\$'000	\$'000	\$'000	\$'000	\$'000
NEW CAPITAL APPROPRIATIONS					
Administered Assets and Liabilities - Bill 1	12,279	12,896	13,600	13,906	14,233
Total new capital appropriations	12,279	12,896	13,600	13,906	14,233
<i>Provided for:</i>					
<i>Purchase of non-financial assets</i>	<i>12,279</i>	<i>12,896</i>	<i>13,600</i>	<i>13,906</i>	<i>14,233</i>
Total Items	12,279	12,896	13,600	13,906	14,233
PURCHASE OF NON-FINANCIAL ASSETS					
Funded by capital appropriations ¹	12,279	12,896	13,600	13,906	14,233
Funded internally from departmental resources ²	22,742				
TOTAL AMOUNT SPENT	35,021	12,896	13,600	13,906	14,233
RECONCILIATION OF CASH USED TO ACQUIRE ASSETS TO ASSET MOVEMENT TABLE					
Total accrual purchases	35,021	12,896	13,600	13,906	14,233
Total cash used to acquire assets	35,021	12,896	13,600	13,906	14,233

¹ Funded by Administered Assets and Liabilities Appropriation (Parliamentary Departments) Bill (No.1) 2012-13.

² Funded by prior year Administered Assets and Liabilities Appropriation (Parliamentary Departments) Bill (No.1).

Prepared on Australian Accounting Standards basis.

Table 3.2.11: Schedule of Asset Movements — Administered

	Land	Buildings	Other property, plant and equipment	Heritage and cultural	Total
	\$'000	\$'000	\$'000	\$'000	\$'000
As at 1 July 2012					
Gross book value	50,000	2,627,304	18,638	78,758	2,774,700
Accumulated depreciation/amortisation and impairment		(606,727)	(12,753)		(619,480)
Opening net book balance	50,000	2,020,577	5,885	78,758	2,155,220
CAPITAL ASSET ADDITIONS					
Estimated expenditure on new or replacement assets					
By purchase - appropriation equity ¹		12,212	84	600	12,896
Total additions	-	12,212	84	600	12,896
Other movements					
Depreciation/amortisation expense		(26,014)	(919)		(26,933)
Total other movements	-	(26,014)	(919)	-	(26,933)
As at 30 June 2013					
Gross book value	50,000	2,639,516	18,722	79,358	2,787,596
Accumulated depreciation/amortisation and impairment	-	(632,741)	(13,672)	-	(646,413)
Closing net book balance	50,000	2,006,775	5,050	79,358	2,141,183

¹ "Appropriation equity" refers to equity injections or Administered Assets and Liabilities appropriations provided through Appropriation (Parliamentary Departments) Bill (No.1) 2012-13.

Prepared on Australian Accounting Standards basis.

3.2.4 Notes to the financial statements

BASIS OF ACCOUNTING

The preceding budgeted financial statements tables represent estimates by the Department of results that will be reported in year-end annual financial statements for the current year, budget year and forward estimates years. The basis of accounting for the year-end reports is that required under the Finance Minister's Orders (Reporting requirements) and Accounting Standards. This basis of accounting has been applied in general terms to the estimates contained in the above budgeted financial statements tables.

GLOSSARY

ACT	Australian Capital Territory
AFP-UP	Australian Federal Police-Uniformed Protection—A part of the AFP's Protection portfolio, AFP-Uniformed Protection (AFP-UP) ensures that individuals and interests identified, by the Commonwealth, to be at risk are kept safe and have their dignity preserved. AFP-UP provides protective security for Commonwealth Government facilities (including Parliament House) and personnel in a variety of locations throughout Australia and overseas.
APS	Australian Public Service
BMS	Building Management System
CPI	Consumer Price Index
DoFD	Department of Finance and Deregulation
FMA Act	Financial Management and Accountability Act
FTE	Full Time Equivalent
GST	Goods and Services Tax
IT	Information Technology
ParlInfo	An information storage and retrieval system used to manage and provide public access to a wide range of parliamentary information, including Bills, Hansard, information collected or generated in the Library, and other Parliamentary papers.
PCN	Parliamentary Computer Network
PSS	The Parliamentary Security Service—PSS staff provide access control and security screening at all entrance points and a mobile and static security presence throughout the rest of Parliament House, including the chambers and the public galleries. The PSS also provide security services to functions, visits and other significant activities within Parliament House.