

Try, Test and Learn Fund

Rewire the Brain

Using insights from the Priority Investment Approach, the \$96.1 million Try, Test and Learn Fund is trialling new and innovative approaches to assist groups of people at risk of long-term welfare dependence.

The Try, Test and Learn Fund will help achieve the objectives of welfare reform—that is, to develop a modern welfare system that increases the capacity of individuals, reduces the risk of welfare dependency and maintains a strong welfare safety net.

What does the evidence tell us?

- 22 per cent of all current 17-19 year olds receiving student payments are expected to be on income support in 10 years.
- From 2003 to 2012, there were 7,160 vocational or university students who started receiving a student payment aged 17 to 19; then experienced more than 12 months on unemployment payments; and were receiving unemployment payments in 2015-16. On average, all of these former young students who transitioned directly to unemployment payments are expected to receive income support in 33 years of their future lifetimes.
- If nothing changes for these former young students, 39 per cent will be receiving income support payments in 10 years, and 30 per cent will be receiving income support payments in 20 years.

What is *Rewire the Brain*?

Face-to-face and computer-based training will assist participants improve their cognitive functioning and social and emotional skills. This includes improvements to their memory, the processing speed of their brains, their social interaction and resilience, and general life skills.

Students will also be linked to external help to ensure they learn specific skills required by employers that will enable them to gain long-term employment.

What are we trying to achieve?

Increased attendance and reduced drop-out rates amongst participants, by equipping them with the skills to complete their studies. The goal is to improve lives through improving students' employability.

Fast facts

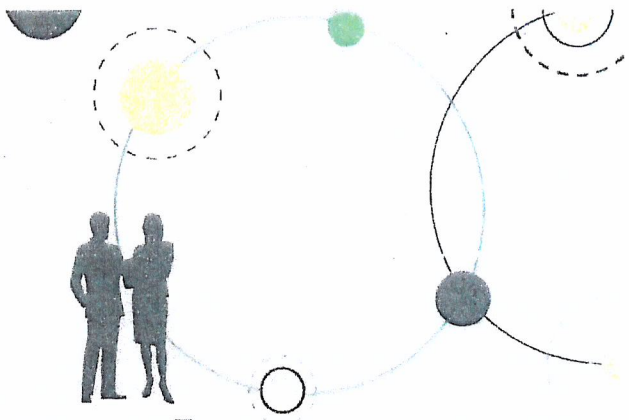
- **Priority group:** Young students
- **Recipient numbers:** 240
- **Locations:** South-West/Western Sydney, and South East Brisbane
- **Trial period:** 18 months
- **Total funding:** \$2 million
- **Co-designers:** Pathways to Resilience Trust, and Stronger Brains
- **Service providers:** Pathways to Resilience Trust will be invited to apply for funding as part of a consortium
- **Potential future saving:** The purpose of these initiatives is to test whether an intervention works to reduce long-term reliance on welfare. It is not possible to predict success rates in advance—this is the purpose of testing new approaches. If 27 per cent of participants (65) move off welfare, the savings to the welfare system are likely to outweigh the costs

How is this initiative new and innovative?

This initiative is the first of its kind in Australian social policy and is based on the relatively new understanding that like a muscle, the brain can be trained and improved.

How will this initiative be evaluated?

This initiative will be tracked using a range of evaluation methods, such as surveys, participant interviews and actuarial analysis.



Try, Test and Learn Fund

Y4Y Youth Force

Using insights from the Priority Investment Approach, the \$96.1 million Try, Test and Learn Fund is trialling new and innovative approaches to assist groups of people at risk of long-term welfare dependence.

The Try, Test and Learn Fund will help achieve the objectives of welfare reform—that is, to develop a modern welfare system that increases the capacity of individuals, reduces the risk of welfare dependency and maintains a strong welfare safety net.

What does the evidence tell us?

- 22 per cent of all current 17-19 year olds receiving student payments are expected to be on income support in 10 years.
- From 2003 to 2012, there were 7,160 vocational or university students who started receiving a student payment aged 17 to 19; then experienced more than 12 months on unemployment payments; and were receiving unemployment payments in 2015-16. On average, all of these former young students who transitioned directly to unemployment payments are expected to receive income support in 33 years of their future lifetimes.
- If nothing changes for these former young students, 39 per cent will be receiving income support payments in 10 years, and 30 per cent will be receiving income support payments in 20 years.

What is *Y4Y Youth Force*?

Digital platform will connect unemployed former students with short-term employment opportunities in the task-based (gig) economy. Jobs could include gardening, driving and delivery, catering and hospitality and child minding. These jobs will help participants build work experience and give them the confidence to take the next step into long-term employment.

At the onset, participants will receive two weeks of general skills training (for example, time management, IT skills and customer service) and additional sector-specific training by request (for example, administration work and gardening).

A Y4Y Youth Force hub will provide a central location for participants to meet and interact with support staff, and borrow shared resources, such as tools.

Fast facts

Priority group: Unemployed former students

Recipient numbers: 80

Locations: Melbourne and Hobart

Trial period: 24 months

Total funding: \$1.38 million

Co-designer: Whitelion Youth Agency

Service provider: Whitelion Youth Agency (subcontracting Nous Group)

Potential future saving: The purpose of these initiatives is to test whether an intervention works to reduce long-term reliance on welfare. It is not possible to predict success rates in advance—this is the purpose of testing new approaches. If 20 per cent of participants (17) move off welfare, the savings to the welfare system are likely to outweigh the costs

What are we trying to achieve?

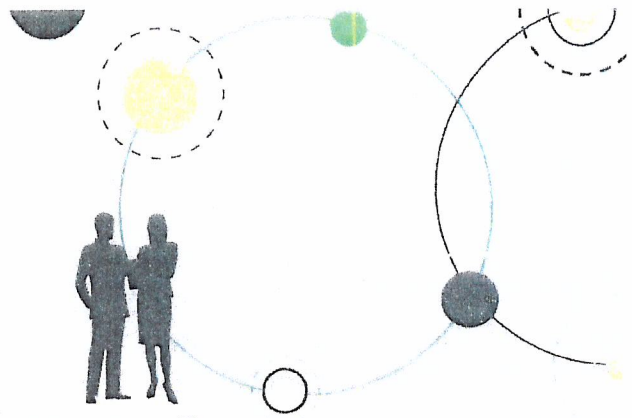
Development of the capacity of participants to engage with the emerging task-based economy. This will also facilitate the development of work skills and real experience and portfolio development; the result of which is longer-term employment opportunities. It may also stimulate interest in further education.

How is this initiative new and innovative?

This initiative will provide evidence on the effectiveness of supporting young people to access short-term work through the task-based economy, as a way to supporting their longer-term engagement in work.

How will this initiative be evaluated?

This initiative will be tracked using a range of evaluation methods, such as surveys, participant interviews and actuarial analysis.



Try, Test and Learn Fund

My Maintenance Crew

Using insights from the Priority Investment Approach, the \$96.1 million Try, Test and Learn Fund is trialling new and innovative approaches to assist groups of people at risk of long-term welfare dependence.

The Try, Test and Learn Fund will help achieve the objectives of welfare reform—that is, to develop a modern welfare system that increases the capacity of individuals, reduces the risk of welfare dependency and maintains a strong welfare safety net.

What does the evidence tell us?

- 22 per cent of all current 17-19 year olds receiving student payments are expected to be on income support in 10 years.
- From 2003 to 2012, there were 7,160 vocational or university students who started receiving a student payment aged 17 to 19; then experienced more than 12 months on unemployment payments; and were receiving unemployment payments in 2015-16. On average, all of these former young students who transitioned directly to unemployment payments are expected to receive income support in 33 years of their future lifetimes.
- If nothing changes for these former young students, 39 per cent will be receiving income support payments in 10 years, and 30 per cent will be receiving income support payments in 20 years.

What is *My Maintenance Crew*?

This initiative will develop a new social enterprise that offers work in event clean-up and maintenance services to unemployed former students. Such a service will address unmet demand in the greater Geelong region.

Participants will be offered skills training, personal development opportunities, mentoring and counselling.

With a particular focus on 'hands-on' vocations, participants will be directly matched with available jobs and will develop the skills and knowledge required to provide event clean-up and maintenance services via the social enterprise, or on completion of the program, as independent contractors in these markets.

Fast facts

Priority group: Unemployed former students

Recipient numbers: 125

Location: Greater Geelong region

Trial period: 28 months

Total funding: \$2.3 million

Co-designer: Diversitat

Service provider: Diversitat

Potential future saving: The purpose of these initiatives is to test whether an intervention works to reduce long-term reliance on welfare. It is not possible to predict success rates in advance—this is the purpose of testing new approaches. If 23 per cent of participants (29) move off welfare, the savings to the welfare system are likely to outweigh the costs

What are we trying to achieve?

Participants will gain employment, income, experience and connections in a part of the economy that is expected to provide ongoing employment prospects.

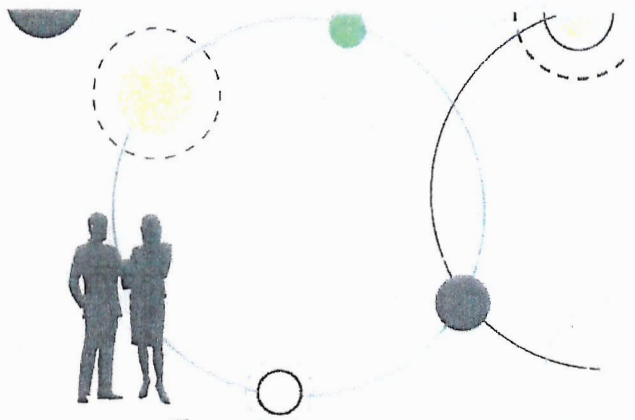
This experience will improve participants' employability and, potentially ongoing employment in the mainstream economy.

How is this initiative new and innovative?

This initiative offers the opportunity of gaining real work experience and paid employment through the development of a social enterprise that targets an existing gap in the greater Geelong region.

How will this initiative be evaluated?

This initiative will be tracked using a range of evaluation methods, such as surveys, participant interviews and actuarial analysis.



Try, Test and Learn Fund

Data-driven job opportunities for young carers

Using insights from the Priority Investment Approach, the \$96.1 million Try, Test and Learn Fund is trialling new and innovative approaches to assist groups of people at risk of long-term welfare dependence.

The Try, Test and Learn Fund will help achieve the objectives of welfare reform—that is, to develop a modern welfare system that increases the capacity of individuals, reduces the risk of welfare dependency and maintains a strong welfare safety net.

What does the evidence tell us?

- More than 60 per cent of young carers have not studied beyond high school.
- On average, current young carers are expected to be on income support in 43 years over their lifetime.
- If nothing changes, almost 1,800 current young carers will remain on income support for the rest of their lives.

What is *Data-driven job opportunities for young carers*?

An online platform will use data analytics and augmented intelligence to match guaranteed job opportunities and training with young carers.

Young carers will also receive six months of post job placement support, such as help with settling in and mentoring and mediation.

What are we trying to achieve?

We are trying to better match young carers with job and training opportunities. The better the match; the better their prospects of long-term employment.

How is this initiative new and innovative?

Augmented machine intelligence has never before been used to profile young carers, and match them with job opportunities and training.

How will this initiative be evaluated?

This initiative will be tracked using a range of evaluation methods, such as surveys, participant interviews and actuarial analysis.

Fast facts

- **Priority group:** Young carers
- **Recipient numbers:** 65
- **Location:** Perth
- **Trial period:** 18 months
- **Total funding:** \$2.1 million
- **Co-designers:** Chandler Macleod, IBM, the Institute of Social Science Research University of Queensland, Curtin University, Key Assets, Mater Research Institute, and Carers NSW
- **Service providers:** Chandler Macleod (sub-contracting IBM, Curtin University and University of Queensland)
- **Potential future saving:** \$2.3 million in total future lifetime welfare costs





Investment Approach to Welfare — Try, Test and Learn Fund

Expense (\$m)					
	2015-16	2016-17	2017-18	2018-19	2019-20
Department of Social Services	-	31.0	31.0	23.9	7.3
<i>Related capital (\$m)</i>					
Department of Social Services	-	0.7	0.5	0.9	0.9

The Government will provide \$96.1 million over four years from 2016-17 for a new Try, Test and Learn Fund to test the effectiveness of innovative policies aimed at reducing long-term welfare dependency.

The Try, Test and Learn Fund will be used to apply and test the effectiveness of new approaches to assisting specific groups who are identified through the Australian Priority Investment Approach as having a high risk of long-term welfare dependency.

These new approaches will be evaluated based on their effectiveness of supporting people into employment and so reducing long-term welfare costs. Results of specific programs and policies under the Try, Test and Learn Fund will inform future decisions as to whether they should be continued, revised, scaled up, or discontinued.

