

Portfolio Budget Statements 2022–23
Budget Related Paper No. 1.14C

Department of Parliamentary Services

Budget Initiatives and Explanations of
Appropriations Specified by Outcomes
and Programs by Entity

© Commonwealth of Australia 2022

ISSN 1449-5880 (Print)

ISSN 2209-2706 (Online)

This publication is available for your use under a Creative Commons BY Attribution 3.0 Australia licence, with the exception of the Commonwealth Coat of Arms, the Department of Parliamentary Services (DPS) logo, photographs, images, signatures and where otherwise stated. The full licence terms are available from <http://creativecommons.org/licenses/by/3.0/au/legalcode>.



Use of DPS material under a Creative Commons BY Attribution 3.0 Australia licence requires you to attribute the work (but not in any way that suggests that DPS endorses you or your use of the work).

Department of Parliamentary Services material used 'as supplied'

Provided you have not modified or transformed DPS material in any way including, for example, by changing the DPS text; calculating percentage changes; graphing or charting data; or deriving new statistics from published DPS statistics – then DPS prefers the following attribution:

Source: The Australian Government Department of Parliamentary Services

Derivative material

If you have modified or transformed DPS material, or derived new material from those of the DPS in any way, then DPS prefers the following attribution:

Based on The Australian Government Department of Parliamentary Services data

Use of the Coat of Arms

The terms under which the Coat of Arms can be used are set out on the Department of the Prime Minister and Cabinet website (www.pmc.gov.au/government/commonwealth-coat-arms).

Other uses

Enquiries regarding this licence and any other use of this document are welcome at:

Mr Matt O'Brien
Chief Finance Officer
Department of Parliamentary Services
(02) 6277 9742



PARLIAMENT OF AUSTRALIA
DEPARTMENT OF PARLIAMENTARY SERVICES

Senator the Hon Slade Brockman
President of the Senate
Parliament House
CANBERRA ACT 2600

The Hon Andrew Wallace
Speaker of the House of Representatives
Parliament House
CANBERRA ACT 2600

Dear Mr President and Mr Speaker

I hereby submit Portfolio Budget Statements as required for the 2022-23 Budget for the Department of Parliamentary Services.

These statements are submitted to the Parliament as a statement on the outcomes for the portfolio.

I present these statements to provide accountability to the Parliament and, through it, the public.

Yours sincerely

Rob Stefanic
Secretary

25 March 2022

Abbreviations and conventions

The following notation may be used:

NEC/nec	not elsewhere classified
-	nil
..	not zero, but rounded to zero
na	not applicable (unless otherwise specified)
nfp	not for publication
\$m	\$ million
\$b	\$ billion

Figures in tables and in the text may be rounded. Figures in text are generally rounded to one decimal place, whereas figures in tables are generally rounded to the nearest thousand. Discrepancies in tables between totals and sums of components are due to rounding.

Enquiries

Should you have any enquiries regarding this publication please contact Mr Matt O'Brien, Chief Finance Officer, Department of Parliamentary Services on (02) 6277 9742.

Links to Portfolio Budget Statements (including Portfolio Additional Estimates Statements and Portfolio Supplementary Additional Statements) can be located on the Australian Government Budget website at: www.budget.gov.au.

User guide

The purpose of the 2022-23 *Portfolio Budget Statements* (PB Statements) is to inform Senators and Members of Parliament of the proposed allocation of resources to government outcomes by entities within the portfolio. Entities receive resources from the annual appropriations acts, special appropriations (including standing appropriations and special accounts), and revenue from other sources.

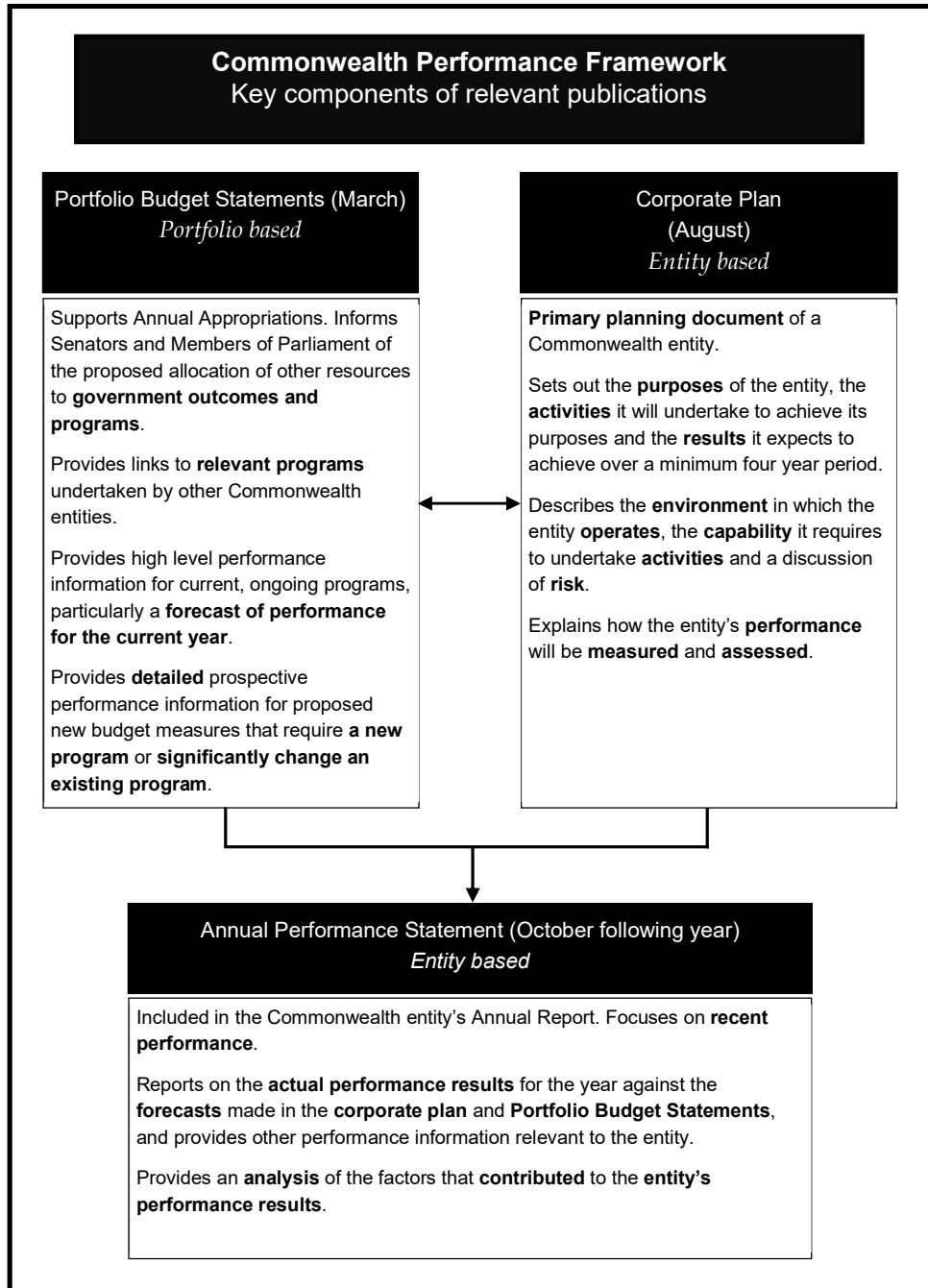
A key role of the PB Statements is to facilitate the understanding of proposed annual appropriations in Appropriation Bills (No. 1 and No. 2) 2022-23 (or Appropriation (Parliamentary Departments) Bill (No. 1) 2022-23 for the parliamentary departments). In this sense, the PB Statements are Budget related papers and are declared by the Appropriation Acts to be 'relevant documents' to the interpretation of the Acts according to section 15AB of the *Acts Interpretation Act 1901*.

The PB Statements provide information, explanation and justification to enable Parliament to understand the purpose of each outcome proposed in the Bills.

As required under section 12 of the *Charter of Budget Honesty Act 1998*, only entities within the general government sector are included as part of the Commonwealth general government sector fiscal estimates and produce PB Statements where they receive funding (either directly or via portfolio departments) through the annual appropriation acts.

The Commonwealth Performance Framework

The following diagram outlines the key components of the Commonwealth performance framework. The diagram identifies the content of each of the publications and the relationship between them. Links to the publications for each entity within the portfolio can be found in the introduction to Section 2: Outcomes and planned performance.



Contents

DEPARTMENTAL OVERVIEW	1
SECTION 1: ENTITY OVERVIEW AND RESOURCES	3
1.1 Strategic direction statement	3
1.2 Entity resource statement	4
1.3 Budget Measures	6
SECTION 2: OUTCOMES AND PLANNED PERFORMANCE	7
2.1 Budgeted expenses and performance for Outcome 1	8
SECTION 3: BUDGETED FINANCIAL STATEMENTS	12
3.1 Budgeted financial statements	12

Departmental Overview

The Department of Parliamentary Services (DPS) is one of four parliamentary departments supporting the Australian Parliament. DPS reports to the Presiding Officers of the Parliament (the President of the Senate and the Speaker of the House of Representatives).

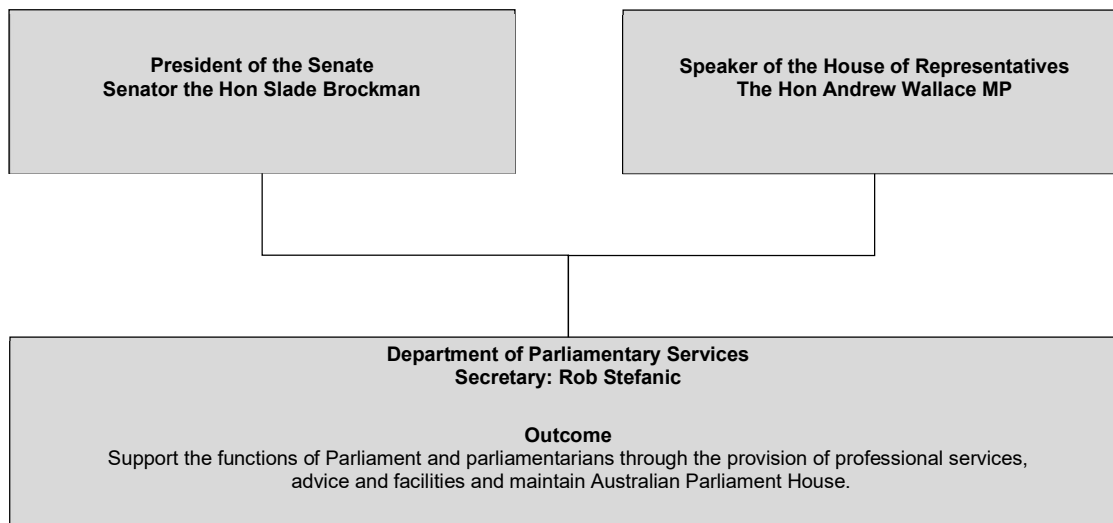
DPS supports the Australian Parliament and parliamentarians through innovative, unified and client-focused services. We are proud to be custodians of Parliament House, the iconic symbol of Australian parliamentary democracy and a significant destination for Australian and international visitors alike.

DPS provides a broad range of services and products to support the functions of the Parliament and the work of parliamentarians. We collaborate with other parliamentary departments and provide or facilitate:

- library and research services
- information and communication technology products and services to the Parliament
- security services
- building and grounds management
- audio-visual and Hansard services
- art collection and exhibition services
- furniture and asset management services
- visitor services and The Parliament Shop
- catering and event management services
- licensed retail, physiotherapy, banking, and childcare services, and
- corporate, administrative and strategic services for DPS.

For information on resourcing across the portfolio, please refer to Part 1: Agency Financial Resourcing in *Budget Paper No. 4: Agency Resourcing*.

Figure 1: Department of Parliamentary Services reporting structure and outcomes



Department of Parliamentary Services

Section 1: Entity overview and resources

1.1 Strategic direction statement

The Department's purpose is to support the work of the Australian Parliament by providing effective, high quality and sustainable services to parliamentarians and building occupants. As custodians of Parliament House we are responsible for delivering a broad range of services and experiences that enable engagement with the parliamentary process.

Three strategic priorities provide the planning and performance framework against which the Department operates.

These strategic priorities are:

- respond to the changing needs of the Parliament
- enhance the Parliament's engagement with the community, and
- effective stewardship of Parliament House.

The Department operates in an environment with a range of significant challenges. Optimising our service capability and working collaboratively to achieve positive outcomes will be essential in addressing these challenges.

Achieving service excellence, strengthening collaborative working arrangements and actively managing risk in a shared operating environment will continue to be essential elements of the Department's delivery strategy.

1.2 Entity resource statement

Table 1.1 shows the total funding from all sources available to the entity for its operations and to deliver programs and services on behalf of the Government.

The table summarises how resources will be applied by outcome (government strategic policy objectives) and by administered (on behalf of the Government or the public) and departmental (for the entity's operations) classification.

For more detailed information on special accounts and special appropriations, please refer to *Budget Paper No. 4 – Agency Resourcing*.

Information in this table is presented on a resourcing (that is, appropriations/cash available) basis, whilst the 'Budgeted expenses by Outcome 1' tables in Section 2 and the financial statements in Section 3 are presented on an accrual basis.

Table 1.1: DPS resource statement — Budget estimates for 2022-23 as at Budget March 2022

	2021-22 <i>Estimated actual</i> \$'000	2022-23 Estimate \$'000
Departmental		
Annual appropriations - ordinary annual services (a)		
Prior year appropriations available	29,651	29,651
Departmental appropriation (b)	154,067	150,191
s74 External Revenue (c)	10,366	14,961
Departmental capital budget (d)	22,949	17,141
Total departmental resourcing	217,033	211,944
Administered		
Annual appropriations - ordinary annual services (a)	8,859	9,483
Annual appropriations - other services - non-operating (e)	40,362	48,358
Total administered resourcing	49,221	57,841
Total resourcing for entity DPS	266,254	269,785
<hr/>		
Average staffing level (number)	961	952
<hr/>		
Third party payments from and on behalf of other entities		
	2021-22 <i>Estimated actual</i> \$'000	2022-23 Estimate \$'000
Payments made on behalf of another entity (as disclosed in the respective entity's resource statement)		
Department of Finance		
<i>Parliamentary Business Resources Act 2017</i>	20,342	20,342

All figures shown above are GST exclusive - these may not match figures in the cash flow statement. Prepared on a resourcing (that is, appropriations available) basis.

- (a) *Appropriation (Parliamentary Departments) Bill (No. 1) 2022-23.*
- (b) Excludes departmental capital budget (DCB).
- (c) Estimated External Revenue receipts under section 74 of the PGPA Act.
- (d) Departmental capital budgets are not separately identified in *Appropriation (Parliamentary Departments) Bill (No. 1) 2022-23* and form part of ordinary annual services items. Please refer to Table 3.5 for further details. For accounting purposes, this amount has been designated as a 'contribution by owner'.
- (e) Administered capital budgets are not separately identified in *Appropriation (Parliamentary Departments) Bill (No. 1) 2022-23* and form part of ordinary annual services items. Please refer to Table 3.10 for further details. For accounting purposes, this amount is designated as a 'contribution by owner'.

1.3 Budget Measures

Budget measures in Part 1 relating to DPS are detailed in Budget Paper No. 2 and are summarised below.

Table 1.2: Entity 2022-23 Budget measures

Part 1: Measures announced since the 2021-22 Mid-Year Economic and Fiscal Outlook (MYEFO)

		2021-22	2022-23	2023-24	2024-25	2025-26
	Program	\$'000	\$'000	\$'000	\$'000	\$'000
Payment measures						
Parliament House - Enhanced Security	1.2					
Administered payment (a)		-	10.3	15.2	3.4	0.8
Total		-	10.3	15.2	3.4	0.8
Response to the Independent Review into Commonwealth Parliamentary Workplaces - additional resourcing (b)	1.1					
Departmental payment		-	0.2	-	-	-
Total		-	0.2	-	-	-
Response to the Independent Review into Commonwealth Parliamentary Workplaces - additional resourcing (b)	1.2					
Administered payment (c)		-	0.7	-	-	-
Total		-	0.7	-	-	-
Total payment measures						
Administered		-	11.0	15.2	3.4	0.8
Departmental		-	0.2	-	-	-
Total		-	11.1	15.2	3.4	0.8

Prepared on a Government Finance Statistics (Underlying Cash) basis. Figures displayed as a negative (-) represent a decrease in funds and a positive (+) represent an increase in funds.

- (a) Including \$9.8 million in 2022-23, \$14.6 million in 2023-24, and \$2.5 million in 2024-25 in capital funding.
- (b) The lead entity for measure titled *Response to the Independent Review into Commonwealth Parliamentary Workplaces - additional resourcing* is the Department of Prime Minister and Cabinet. The full measure description and package details appear in Budget Paper No.2 under the Prime Minister and Cabinet portfolio.
- (c) Including \$0.7 million in 2022-23 in capital funding.

Section 2: Outcomes and planned performance

Government outcomes are the intended results, impacts or consequences of actions by the Government on the Australian community. Commonwealth programs are the primary vehicle by which government entities achieve the intended results of their outcome statements. Entities are required to identify the programs which contribute to government outcomes over the Budget and forward years.

Each outcome is described below together with its related programs. The following provides detailed information on expenses for each outcome and program, further broken down by funding source.

Note:

Performance reporting requirements in the Portfolio Budget Statements are part of the Commonwealth performance framework established by the *Public Governance, Performance and Accountability Act 2013*. It is anticipated that the performance measure described in Portfolio Budget Statements will be read with broader information provided in an entity's corporate plans and annual performance statements – included in Annual Reports – to provide a complete picture of an entity's planned and actual performance.

The most recent corporate plan and annual performance statements, detailed in the annual report for DPS can be found at:

https://www.aph.gov.au/About_Parliament/Parliamentary_Departments/Department_of_Parliamentary_Services/Publications

2.1 Budgeted expenses and performance for Outcome 1

Outcome 1: Support the functions of Parliament and parliamentarians through the provision of professional services, advice and facilities and maintain Australian Parliament House

Budgeted expenses for Outcome 1

This table shows how much the entity intends to spend (on an accrual basis) on achieving the outcome, broken down by program, as well as by Administered and Departmental funding sources.

Table 2.1.1: Budgeted expenses for Outcome 1

	2021-22 Estimated actual \$'000	2022-23 Budget \$'000	2023-24 Forw ard estimate \$'000	2024-25 Forw ard estimate \$'000	2025-26 Forw ard estimate \$'000
Program 1.1: Parliamentary Services					
Departmental expenses					
Departmental appropriation	154,067	150,191	151,283	152,915	154,413
s74 External Revenue (a)	10,366	14,961	14,961	14,961	14,961
Expenses not requiring appropriation in the Budget year (b)	20,796	20,764	20,732	20,732	20,732
Departmental total	185,229	185,916	186,976	188,608	190,106
Total expenses for program 1.1	185,229	185,916	186,976	188,608	190,106
Program 1.2: Parliament House Works Program					
Administered expenses					
Ordinary annual services (Appropriation (Parliamentary Departments) Bill (No. 1))	8,859	9,483	9,715	10,152	10,347
Expenses not requiring appropriation in the Budget year (b)	50,328	50,328	50,328	50,328	50,328
Administered total	59,187	59,811	60,043	60,480	60,675
Total expenses for program 1.2	59,187	59,811	60,043	60,480	60,675

(a) Estimated expenses incurred in relation to receipts retained under section 74 of the PGPA Act.

(b) Expenses not requiring appropriation in the Budget year are made up of depreciation expenses, amortisation expenses, lease costs, make good expenses and audit fees.

Note: Departmental appropriation splits and totals are indicative estimates and may change in the course of the budget year as government priorities change.

Table 2.1.1: Budgeted expenses for Outcome 1 (continued)

	2021-22 Estimated actual \$'000	2022-23 Budget \$'000	2023-24 Forward estimate \$'000	2024-25 Forward estimate \$'000	2025-26 Forward estimate \$'000
Outcome 1 Totals by appropriation type					
Departmental expenses					
Departmental appropriation	154,067	150,191	151,283	152,915	154,413
Section 74 External Revenue (a)	10,366	14,961	14,961	14,961	14,961
Expenses not requiring appropriation in the Budget year (b)	20,796	20,764	20,732	20,732	20,732
Departmental total	185,229	185,916	186,976	188,608	190,106
Administered expenses					
Ordinary annual services (Appropriation Bill No. 1)	8,859	9,483	9,715	10,152	10,347
Expenses not requiring appropriation in the Budget year (b)	50,328	50,328	50,328	50,328	50,328
Administered total	59,187	59,811	60,043	60,480	60,675
Total expenses for Outcome 1	244,416	245,727	247,019	249,088	250,781
	2021-22	2022-23			
Average staffing level (number)	961	952			

(a) Estimated expenses incurred in relation to receipts retained under section 74 of the PGPA Act.

(b) Expenses not requiring appropriation in the Budget year are made up of depreciation expenses, amortisation expenses, lease costs, make good expenses and audit fees.

Note: Departmental appropriation splits and totals are indicative estimates and may change in the course of the budget year as government priorities change.

Table 2.1.2: Performance measure for Outcome 1

Table 2.1.2 details the performance measures for each program associated with Outcome 1. It also summarises how each program is delivered and where 2022-23 Budget measures have created new programs or materially changed existing programs.

Outcome 1 – Support the functions of Parliament and parliamentarians through the provision of professional services, advice and facilities and maintain Australian Parliament House	
Program 1.1 – Parliamentary Services	
Delivery	<p>Respond to the changing needs of the Parliament</p> <ul style="list-style-type: none"> • Ensure technology and infrastructure planning reflects the current and future needs of the Parliament. • Enhance the flexible and accessible delivery of advice, information and services. • Ensure the work of the Parliament is recorded, reported and accessible. • Continual review of physical security and cybersecurity systems and processing. • Ensure our retail and event services to occupants and business visitors enables the Parliament. <p>Enhance the Parliament’s engagement with the community</p> <ul style="list-style-type: none"> • Enhance digital engagement with parliamentary content. • Continue to develop our physical visitor experience at Parliament House. • Support the Parliament’s engagement with the community and initiatives to help develop parliamentary democracy in our region. <p>Effective stewardship of Parliament House</p> <ul style="list-style-type: none"> • Develop and implement asset maintenance programs. • Embed Management of the Design Integrity Framework to ensure changes maintain or enhance the building and its precincts. • Develop and implement appropriate strategic and timely proposals for any adaptation of building uses while respecting the design intent for Parliament House. • Provide a safe and accessible environment for building occupants and visitors.

Table 2.1.2: Performance measures for Outcome 1 (continued)

Outcome 1 – Support the functions of Parliament and parliamentarians through the provision of professional services, advice and facilities and maintain Australian Parliament House		
Program 1.1 – Parliamentary Services		
Performance information		
Year	Performance criteria	Actual Achievement/Targets
2021-22	<ul style="list-style-type: none"> Respond to the changing needs of Parliament Enhance the Parliament's engagement with the community Effective stewardship of Parliament House 	DPS is on track to meet the majority of 2021-22 targets across the individual performance criteria. COVID-19 reduced the number of visitors to Parliament House and had an adverse impact on catering operations.
2022-23	<ul style="list-style-type: none"> Respond to the changing needs of Parliament Enhance the Parliament's engagement with the community Effective stewardship of Parliament House 	Various satisfaction targets across the individual performance criteria.
2023-24 and beyond	As per 2022-23	As per 2022-23
Program 1.2 – Parliament House Works Program		
Delivery	Effective delivery of the Parliament House works program <ul style="list-style-type: none"> Effectively manage the Parliament House Capital Works Plan. 	
Performance information		
Year	Performance criteria	Actual Achievement/Targets
2021-22	Effectively manage the Parliament House works program	DPS is on track to meet the majority of 2021-22 targets across the individual performance criteria.
2022-23	Effectively manage the Parliament House works program	Projects delivered according to milestones and within budget.
2023-24 and beyond	As per 2022-23	As 2022-23
Purposes	The Department's purpose is to support the work of the Parliament by providing effective, high quality and sustainable services to parliamentarians and building occupants. As custodians of Parliament House we are responsible for delivering a broad range of services and experiences that enable engagement with the parliamentary process.	

Section 3: Budgeted financial statements

Section 3 presents budgeted financial statements which provide a comprehensive snapshot of entity finances for the 2022-23 budget year, including the impact of budget measures and resourcing on financial statements.

3.1 Budgeted financial statements

3.1.1 Differences between entity resourcing and financial statements

The Resource Statement (Table 1.1) provides a consolidated view of resources available to DPS in 2022-23, appropriated in both the budget year and prior years, where they remain unspent and available. This table is prepared on a cash basis; however, this contrasts to the budgeted financial statements (which are presented in the tables that follow), which are prepared in accordance with Australian Accounting Standards.

3.1.2 Explanatory notes and analysis of budgeted financial statements

Comprehensive Income Statement

DPS received additional funding as part of the 2020-21 budget to support the operations of the department. Departmental operating funding is set to reduce by \$3.9 million in 2022-23 from 2021-22.

Balance Sheet

The departmental and administered net asset positions are expected to remain consistent in 2022-23 and across the forward estimates, with minor movements budgeted in-line with fluctuations to capital appropriations.

3.2. Budgeted financial statements tables

Table 3.1: Comprehensive income statement (showing net cost of services) for the period ended 30 June

	2021-22 Estimated actual \$'000	2022-23 Budget \$'000	2023-24 Forward estimate \$'000	2024-25 Forward estimate \$'000	2025-26 Forward estimate \$'000
EXPENSES					
Employee benefits	111,876	108,633	109,836	110,921	111,914
Suppliers	57,107	55,456	55,312	55,859	56,364
Depreciation and amortisation (a)	21,807	21,807	21,807	21,807	21,807
Finance costs	19	20	21	21	21
Total expenses	190,809	185,916	186,976	188,608	190,106
LESS:					
OWN-SOURCE INCOME					
Own-source revenue					
Sale of goods and rendering of services	14,041	14,086	14,086	14,086	14,086
Other	(3,675)	875	875	875	875
Total own-source revenue	10,366	14,961	14,961	14,961	14,961
Net cost of services	(180,443)	(170,955)	(172,015)	(173,647)	(175,145)
Revenue from Government	154,067	150,191	151,283	152,915	154,413
Deficit attributable to the Australian Government	(26,376)	(20,764)	(20,732)	(20,732)	(20,732)
OTHER COMPREHENSIVE INCOME					
Total comprehensive loss	(26,376)	(20,764)	(20,732)	(20,732)	(20,732)
Total comprehensive loss attributable to the Australian Government	(26,376)	(20,764)	(20,732)	(20,732)	(20,732)

Prepared on Australian Accounting Standards basis.

- (a) From 2010-11, the Government introduced net cash appropriation arrangements where Bill 1 revenue appropriations for the depreciation/amortisation expenses of non-corporate Commonwealth entities (and select corporate Commonwealth entities) were replaced with a separate capital budget (the Departmental Capital Budget, or DCB) provided through Bill 1 equity appropriations. For information regarding DCBs, please refer to Table 3.5 Departmental Capital Budget Statement.

Table 3.1: Comprehensive income statement (showing net cost of services) for the period ended 30 June (continued)

Note: Impact of net cash appropriation arrangements

	2021-22 Estimated actual \$'000	2022-23 Budget \$'000	2023-24 Forward estimate \$'000	2024-25 Forward estimate \$'000	2025-26 Forward estimate \$'000
Total comprehensive loss less depreciation/amortisation expenses previously funded through revenue appropriations	(5,580)	-	-	-	-
plus: depreciation/amortisation expenses previously funded through revenue appropriations (a)	20,873	20,873	20,873	20,873	20,873
plus: depreciation/amortisation expenses for ROU (b)	934	934	934	934	934
less: principal repayments on leased assets (b)	1,011	1,043	1,075	1,075	1,075
Total comprehensive loss - as per the statement of comprehensive income	(26,376)	(20,764)	(20,732)	(20,732)	(20,732)

Prepared on Australian Accounting Standards basis.

- (a) From 2010-11, the Government introduced net cash appropriation arrangements where Bill 1 revenue appropriations for the depreciation/amortisation expenses of non-corporate Commonwealth entities (and select corporate Commonwealth entities) were replaced with a separate capital budget (the Departmental Capital Budget, or DCB) provided through Bill 1 equity appropriations. For information regarding DCBs, please refer to Table 3.5 Departmental Capital Budget Statement.
- (b) Applies leases under AASB 16 Leases.

Table 3.2: Budgeted departmental balance sheet (as at 30 June)

	2021-22 Estimated actual \$'000	2022-23 Budget \$'000	2023-24 Forward estimate \$'000	2024-25 Forward estimate \$'000	2025-26 Forward estimate \$'000
ASSETS					
Financial assets					
Cash and cash equivalents	855	855	855	855	855
Trade and other receivables	28,796	28,796	28,796	28,796	28,796
Total financial assets	29,651	29,651	29,651	29,651	29,651
Non-financial assets					
Land and buildings	2,772	3,757	4,742	5,727	6,712
Property, plant and equipment	41,150	39,142	37,207	35,370	33,623
Intangibles	51,052	49,327	47,661	46,084	44,588
Inventories	388	388	388	388	388
Other non-financial assets	4,714	4,714	4,714	4,714	4,714
Total non-financial assets	100,076	97,328	94,712	92,283	90,025
Assets held for sale	-	-	-	-	-
Total assets	129,727	126,979	124,363	121,934	119,676
LIABILITIES					
Payables					
Suppliers	5,587	5,587	5,587	5,587	5,587
Other payables	2,842	2,842	2,842	2,842	2,842
Total payables	8,429	8,429	8,429	8,429	8,429
Interest bearing liabilities					
Leases	2,837	3,712	4,555	5,398	6,241
Total interest bearing liabilities	2,837	3,712	4,555	5,398	6,241
Provisions					
Employee provisions	28,217	28,217	28,217	28,217	28,217
Total provisions	28,217	28,217	28,217	28,217	28,217
Total liabilities	39,483	40,358	41,201	42,044	42,887
Net assets	90,244	86,621	83,162	79,890	76,789
EQUITY*					
Parent entity interest					
Contributed equity	347,582	364,723	381,996	399,456	417,087
Reserves	19,508	19,508	19,508	19,508	19,508
Retained surplus (accumulated deficit)	(276,846)	(297,610)	(318,342)	(339,074)	(359,806)
Total parent entity interest	90,244	86,621	83,162	79,890	76,789
Total equity	90,244	86,621	83,162	79,890	76,789

Prepared on Australian Accounting Standards basis.

*'Equity' is the residual interest in assets after deduction of liabilities.

Table 3.3: Departmental statement of changes in equity — summary of movement (Budget year 2022-23)

	Retained earnings \$'000	Asset revaluation reserve \$'000	Contributed equity/ capital \$'000	Total equity \$'000
Opening balance as at 1 July 2022				
Balance carried forward from previous period	(276,846)	19,508	347,582	90,244
Adjusted opening balance	(276,846)	19,508	347,582	90,244
Comprehensive income				
Deficit for the period	(20,764)	-	-	(20,764)
Total comprehensive income	(20,764)	-	-	(20,764)
Transactions with owners				
Contributions by owners				
Departmental Capital Budget (DCB)	-	-	17,141	17,141
Sub-total transactions with owners	-	-	17,141	17,141
Estimated closing balance as at 30 June 2023	(297,610)	19,508	364,723	86,621
Closing balance attributable to the Australian Government	(297,610)	19,508	364,723	86,621

Prepared on Australian Accounting Standards basis

Table 3.4: Budgeted departmental statement of cash flows (for the period ended 30 June)

	2021-22 Estimated actual \$'000	2022-23 Budget \$'000	2023-24 Forw ard estimate \$'000	2024-25 Forw ard estimate \$'000	2025-26 Forw ard estimate \$'000
OPERATING ACTIVITIES					
Cash received					
Appropriations	159,647	150,191	151,283	152,915	154,413
Sale of goods and rendering of services	14,041	14,086	14,086	14,086	14,086
GST received	5,649	5,500	5,506	5,555	5,605
Other	(3,675)	875	875	875	875
Total cash received	175,662	170,652	171,750	173,431	174,979
Cash used					
Employees	111,876	108,633	109,836	110,921	111,914
Suppliers	62,756	60,956	60,818	61,414	61,969
Interest payments on lease liability	19	20	21	21	21
Total cash used	174,651	169,609	170,675	172,356	173,904
Net cash from operating activities	1,011	1,043	1,075	1,075	1,075
INVESTING ACTIVITIES					
Cash used					
Purchase of property, plant and equipment and intangibles	22,949	17,141	17,273	17,460	17,631
Total cash used	22,949	17,141	17,273	17,460	17,631
Net cash used by investing activities	(22,949)	(17,141)	(17,273)	(17,460)	(17,631)
FINANCING ACTIVITIES					
Cash received					
Contributed equity	22,949	17,141	17,273	17,460	17,631
Other	-	-	-	-	-
Total cash received	22,949	17,141	17,273	17,460	17,631
Cash used					
Principal payments on lease liability	1,011	1,043	1,075	1,075	1,075
Total cash used	1,011	1,043	1,075	1,075	1,075
Net cash from financing activities	21,938	16,098	16,198	16,385	16,556
Net increase in cash held	-	-	-	-	-
Cash and cash equivalents at the beginning of the reporting period	855	855	855	855	855
Cash and cash equivalents at the end of the reporting period	855	855	855	855	855

Prepared on Australian Accounting Standards basis.

Table 3.5: Departmental capital budget statement (for the period ended 30 June)

	2021-22 Estimated actual \$'000	2022-23 Budget \$'000	2023-24 Forw ard estimate \$'000	2024-25 Forw ard estimate \$'000	2025-26 Forw ard estimate \$'000
NEW CAPITAL APPROPRIATIONS					
Capital budget - Bill 1 (DCB)	22,949	17,141	17,273	17,460	17,631
Total new capital appropriations	22,949	17,141	17,273	17,460	17,631
<i>Provided for:</i>					
<i>Purchase of non-financial assets</i>	22,949	17,141	17,273	17,460	17,631
Total items	22,949	17,141	17,273	17,460	17,631
PURCHASE OF NON-FINANCIAL ASSETS					
ASSETS					
Funded by capital appropriations - DCB (a)	22,949	17,141	17,273	17,460	17,631
TOTAL	22,949	17,141	17,273	17,460	17,631
RECONCILIATION OF CASH USED TO ACQUIRE ASSETS TO ASSET MOVEMENT TABLE					
Total cash used to acquire assets	22,949	17,141	17,273	17,460	17,631

Prepared on Australian Accounting Standards basis.

(a) Includes purchases from current and previous years' Departmental capital budgets (DCBs).

Table 3.6: Statement of departmental asset movements (Budget year 2022-23)

	Buildings	Other property, plant and equipment	Computer software and intangibles	Total
	\$'000	\$'000	\$'000	\$'000
As at 1 July 2022				
Gross book value	-	64,267	120,007	184,274
Gross book value - ROU assets	5,426	371	-	5,797
Accumulated depreciation / amortisation and impairment	-	(23,289)	(68,955)	(92,244)
Accumulated depreciation / amortisation and impairment - ROU assets	(2,654)	(199)	-	(2,853)
Opening net book balance	2,772	41,150	51,052	94,974
Capital asset additions				
Estimated expenditure on new or replacement assets				
By purchase - appropriation equity (a)	-	9,161	7,980	17,141
By purchase - appropriation equity - ROU assets	1,848	70	-	1,918
Total additions	1,848	9,231	7,980	19,059
Other movements				
Depreciation/amortisation expense	-	(11,168)	(9,705)	(20,873)
Depreciation/amortisation on ROU assets	(863)	(71)	-	(934)
Total other movements	(863)	(11,239)	(9,705)	(21,807)
As at 30 June 2023				
Gross book value	-	73,428	127,987	201,415
Gross book value - ROU assets	7,274	441	-	7,715
Accumulated depreciation/amortisation and impairment	-	(34,457)	(78,660)	(113,117)
Accumulated depreciation/amortisation and impairment - ROU assets	(3,517)	(270)	-	(3,787)
Closing net book balance	3,757	39,142	49,327	92,226

Prepared on Australian Accounting Standards basis.

(a) 'Appropriation equity' refers to equity injections appropriations provided through *Appropriation (Parliamentary Departments) Bill (No. 1) 2022-23*.

Table 3.7: Schedule of budgeted income and expenses administered on behalf of Government (for the period ended 30 June)

	2021-22 Estimated actual \$'000	2022-23 Budget \$'000	2023-24 Forw ard estimate \$'000	2024-25 Forw ard estimate \$'000	2025-26 Forw ard estimate \$'000
EXPENSES					
Suppliers	8,859	9,483	9,715	10,152	10,347
Depreciation and amortisation (a)	50,328	50,328	50,328	50,328	50,328
Total expenses administered on behalf of Government	59,187	59,811	60,043	60,480	60,675
Net cost of services	(59,187)	(59,811)	(60,043)	(60,480)	(60,675)
OTHER COMPREHENSIVE INCOME					
Total comprehensive loss	(59,187)	(59,811)	(60,043)	(60,480)	(60,675)

Prepared on Australian Accounting Standards basis.

(a) From 2010-11, the Government introduced net cash appropriation arrangements where Bill 1 revenue appropriations for the depreciation/amortisation expenses of non-corporate Commonwealth entities (and select corporate Commonwealth entities) were replaced with a separate capital budget (the Administered Capital Budget, or ACB) provided through Bill 1 equity appropriations. For information regarding ACBs, please refer to Table 3.10 Administered Capital Budget Statement.

Table 3.8: Schedule of budgeted assets and liabilities administered on behalf of Government (as at 30 June)

	2021-22 Estimated actual \$'000	2022-23 Budget \$'000	2023-24 Forw ard estimate \$'000	2024-25 Forw ard estimate \$'000	2025-26 Forw ard estimate \$'000
ASSETS					
Financial assets					
Cash and cash equivalents	432	432	432	432	432
Taxation receivables	615	615	615	615	615
Total financial assets	1,047	1,047	1,047	1,047	1,047
Non-financial assets					
Land and buildings	2,574,371	2,558,887	2,544,031	2,529,898	2,516,470
Property, plant and equipment	38,419	49,985	65,745	69,443	70,633
Intangibles	8,676	9,924	11,202	12,526	13,893
Heritage and Cultural	125,647	126,347	127,047	127,747	128,447
Other non-financial assets	533	533	533	533	533
Total non-financial assets	2,747,646	2,745,676	2,748,558	2,740,147	2,729,976
Total assets administered on behalf of Government	2,748,693	2,746,723	2,749,605	2,741,194	2,731,023
LIABILITIES					
Payables					
Suppliers	3,329	3,329	3,329	3,329	3,329
Other payables	446	446	446	446	446
Total payables	3,775	3,775	3,775	3,775	3,775
Total liabilities administered on behalf of Government	3,775	3,775	3,775	3,775	3,775
Net assets	2,744,918	2,742,948	2,745,830	2,737,419	2,727,248

Prepared on Australian Accounting Standards basis.

Table 3.9: Schedule of budgeted administered cash flows (for the period ended 30 June)

	2021-22 Estimated actual \$'000	2022-23 Budget \$'000	2023-24 Forw ard estimate \$'000	2024-25 Forw ard estimate \$'000	2025-26 Forw ard estimate \$'000
OPERATING ACTIVITIES					
Cash received					
Net GST received	4,922	4,659	4,747	4,842	4,939
Total cash received	4,922	4,659	4,747	4,842	4,939
Cash used					
Suppliers	13,781	14,142	14,462	14,994	15,286
Total cash used	13,781	14,142	14,462	14,994	15,286
Net cash used by operating activities	(8,859)	(9,483)	(9,715)	(10,152)	(10,347)
INVESTING ACTIVITIES					
Cash used					
Purchase of property, plant and equipment and intangibles	40,362	48,358	53,210	41,917	40,157
Total cash used	40,362	48,358	53,210	41,917	40,157
Net cash used by investing activities	(40,362)	(48,358)	(53,210)	(41,917)	(40,157)
Net decrease in cash held	(49,221)	(57,841)	(62,925)	(52,069)	(50,504)
Cash and cash equivalents at beginning of reporting period	432	432	432	432	432
Cash from Official Public Account for:					
- Appropriations	54,143	62,500	67,672	56,911	55,443
Total cash from Official Public Account	54,143	62,500	67,672	56,911	55,443
Cash to Official Public Account for:					
- Appropriations	4,922	4,659	4,747	4,842	4,939
Total cash to Official Public Account	4,922	4,659	4,747	4,842	4,939
Cash and cash equivalents at end of reporting period	432	432	432	432	432

Prepared on Australian Accounting Standards basis.

Table 3.10: Schedule of administered capital budget statement (for the period ended 30 June)

	2021-22 Estimated actual \$'000	2022-23 Budget \$'000	2023-24 Forw ard estimate \$'000	2024-25 Forw ard estimate \$'000	2025-26 Forw ard estimate \$'000
NEW CAPITAL APPROPRIATIONS					
Administered Assets and Liabilities	40,362	48,358	53,210	41,917	40,157
Total new capital appropriations	40,362	48,358	53,210	41,917	40,157
<i>Provided for:</i>					
<i>Purchase of non-financial assets</i>	40,362	48,358	53,210	41,917	40,157
Total items	40,362	48,358	53,210	41,917	40,157
PURCHASE OF NON-FINANCIAL ASSETS					
Funded by capital appropriations (a)	40,362	48,358	53,210	41,917	40,157
TOTAL	40,362	48,358	53,210	41,917	40,157
RECONCILIATION OF CASH USED TO ACQUIRE ASSETS TO ASSET MOVEMENT TABLE					
Total cash used to acquire assets	40,362	48,358	53,210	41,917	40,157

Prepared on Australian Accounting Standards basis.

(a) Funded by Administered Assets and Liabilities appropriation.

Table 3.11: Statement of administered asset movements (Budget year 2022-23)

	Land	Buildings	Other property, plant and equipment	Heritage and cultural	Computer software and intangibles	Total
	\$'000	\$'000	\$'000	\$'000	\$'000	\$'000
As at 1 July 2022						
Gross book value	119,000	2,504,146	40,615	125,647	10,783	2,800,191
Accumulated depreciation/amortisation and impairment	-	(48,775)	(2,196)	-	(2,107)	(53,078)
Opening net book balance	119,000	2,455,371	38,419	125,647	8,676	2,747,113
CAPITAL ASSET ADDITIONS						-
Estimated expenditure on new or replacement assets						
By purchase - appropriation equity (a)	-	33,291	12,287	700	2,080	48,358
Total additions	-	33,291	12,287	700	2,080	48,358
Other movements						
Depreciation/amortisation expense	-	(48,775)	(721)	-	(832)	(50,328)
Total other movements	-	(48,775)	(721)	-	(832)	(50,328)
As at 30 June 2023						
Gross book value	119,000	2,537,437	52,902	126,347	12,863	2,848,549
Accumulated depreciation/amortisation and impairment	-	(97,550)	(2,917)	-	(2,939)	(103,406)
Closing net book balance	119,000	2,439,887	49,985	126,347	9,924	2,745,143

Prepared on Australian Accounting Standards basis.

(a) 'Appropriation equity' refers to Administered Assets and Liabilities provided through *Appropriation (Parliamentary Departments) Bill (No. 2) 2022-23*.

Glossary

Term	Meaning
ACB	Administered Capital Budget
DCB	Departmental Capital Budget
DPS	Department of Parliamentary Services
GST	Goods and Services Tax
MYEFO	Mid-Year Economic Fiscal Outlook
OPA	Official Public Account
PBS	Portfolio Budget Statements
PGPA Act	<i>Public Governance, Performance and Accountability Act 2013</i>