

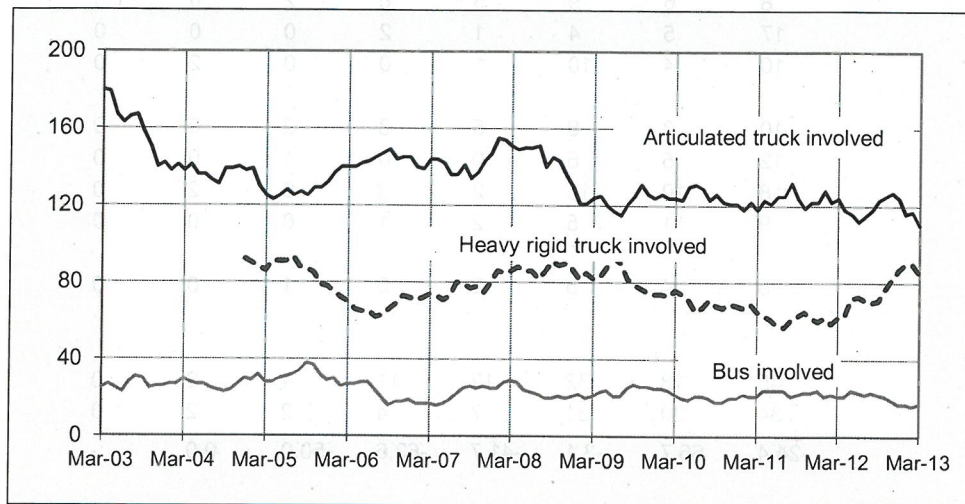


## Fatal heavy vehicle crashes Australia quarterly bulletin

Jan – Mar 2013

## Fatal crashes involving heavy vehicles, Australia — moving annual total

(Each point shows the number of fatal crashes during the preceding 12 months)



## Key features

- During the 12 months to the end of March 2013, 244 people died from 208 fatal crashes involving heavy trucks or buses. These included:
  - 133 deaths from 110 crashes involving articulated trucks,
  - 96 deaths from 85 crashes involving heavy rigid trucks,
  - 19 deaths from 17 crashes involving buses <sup>a</sup>.
- Fatal crashes involving articulated trucks:
  - decreased by 11.3 per cent compared with the corresponding period one year earlier,
  - decreased by an average of 3.1 per cent per year over the three years to March 2013.
- Fatal crashes involving heavy rigid trucks:
  - increased by 37.1 per cent compared with the corresponding period one year earlier,
  - increased by an average of 2.9 per cent per year over the three years to March 2013.

<sup>a</sup> Figures sum to more than the total because some crashes involved more than one type of heavy vehicle.

## ARTICULATED TRUCK INVOLVEMENT

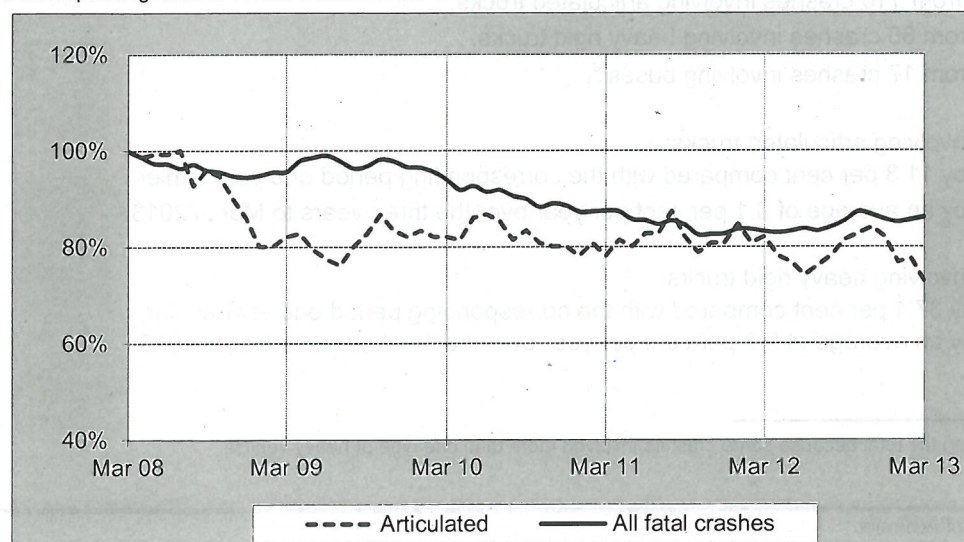
**Table 1 Fatal crashes involving articulated trucks by State/Territory**

|   | NSW   | Vic  | Qld  | SA    | WA    | Tas   | NT  | ACT | Australia |
|---|-------|------|------|-------|-------|-------|-----|-----|-----------|
| <b>Calendar Years</b>                                   |       |      |      |       |       |       |     |     |           |
| 2007  | 53    | 30   | 38   | 6     | 14    | 4     | 2   | 0   | 147       |
| 2008  | 47    | 22   | 35   | 9     | 8     | 6     | 3   | 0   | 130       |
| 2009  | 33    | 17   | 38   | 9     | 13    | 10    | 2   | 2   | 124       |
| 2010  | 41    | 31   | 25   | 7     | 12    | 3     | 1   | 1   | 121       |
| 2011  | 43    | 21   | 32   | 12    | 10    | 2     | 2   | 0   | 122       |
| 2012  | 39    | 29   | 35   | 9     | 7     | 3     | 2   | 0   | 124       |
| <b>Quarters</b>   |       |      |      |       |       |       |     |     |           |
| <b>2011</b>   |       |      |      |       |       |       |     |     |           |
| March   | 8     | 6    | 9    | 5     | 2     | 0     | 0   | 0   | 30        |
| June  | 8     | 6    | 9    | 5     | 6     | 2     | 0   | 0   | 36        |
| September   | 17    | 5    | 4    | 1     | 2     | 0     | 0   | 0   | 29        |
| December  | 10    | 4    | 10   | 1     | 0     | 0     | 2   | 0   | 27        |
| <b>2012</b>   |       |      |      |       |       |       |     |     |           |
| March   | 10    | 3    | 9    | 5     | 3     | 2     | 0   | 0   | 32        |
| June  | 12    | 5    | 6    | 0     | 0     | 1     | 0   | 0   | 24        |
| September   | 8     | 10   | 15   | 2     | 3     | 0     | 2   | 0   | 40        |
| December  | 9     | 11   | 5    | 2     | 1     | 0     | 0   | 0   | 28        |
| <b>2013</b>   |       |      |      |       |       |       |     |     |           |
| March   | 5     | 4    | 5    | 3     | 0     | 1     | 0   | 0   | 18        |
| <b>12 Months ended</b>                                  |       |      |      |       |       |       |     |     |           |
| March 2012  | 45    | 18   | 32   | 12    | 11    | 4     | 2   | 0   | 124       |
| March 2013  | 34    | 30   | 31   | 7     | 4     | 2     | 2   | 0   | 110       |
| % change  | -24.4 | 66.7 | -3.1 | -41.7 | -63.6 | -50.0 | 0.0 | -   | -11.3     |
| <b>Average annual % change over 3 years<sup>a</sup></b> |       |      |      |       |       |       |     |     |           |
| <b>12 mths end Mar 2010</b>                             |       |      |      |       |       |       |     |     |           |
| to 12 mths end Mar 2013                                 | -3.2  | 11.5 | -1.8 | -4.6  | -29.8 | -26.0 | 7.2 | -   | -3.1      |

<sup>a</sup> Average annual percentage change based on the exponential trend for the last three 12-month periods.

### Index of fatal crashes involving articulated trucks in Australia — five years ended March 2013

Each point shows the number of fatal crashes in the preceding 12 months expressed as a percentage of the corresponding number of fatal crashes in the 12 months to the end of March 2008.





## ARTICULATED TRUCK INVOLVEMENT

**Table 2 Deaths from crashes involving articulated trucks by State/Territory**

|  | NSW   | Vic  | Qld  | SA    | WA    | Tas   | NT  | ACT | Australia |
|--|-------|------|------|-------|-------|-------|-----|-----|-----------|
| <b>Calendar Years</b>                                    |       |      |      |       |       |       |     |     |           |
| 2007   | 59    | 48   | 41   | 7     | 20    | 5     | 2   | 0   | 182       |
| 2008   | 53    | 23   | 46   | 10    | 10    | 6     | 3   | 0   | 151       |
| 2009   | 47    | 20   | 40   | 11    | 15    | 11    | 2   | 2   | 148       |
| 2010   | 51    | 36   | 29   | 7     | 13    | 3     | 1   | 1   | 141       |
| 2011   | 47    | 23   | 39   | 13    | 12    | 2     | 2   | 0   | 138       |
| 2012   | 50    | 30   | 45   | 10    | 8     | 3     | 2   | 0   | 148       |
| <b>Quarters</b>  |       |      |      |       |       |       |     |     |           |
| <b>2011</b>  |       |      |      |       |       |       |     |     |           |
| March  | 8     | 6    | 12   | 5     | 3     | 0     | 0   | 0   | 34        |
| June   | 9     | 7    | 13   | 6     | 7     | 2     | 0   | 0   | 44        |
| September  | 19    | 5    | 4    | 1     | 2     | 0     | 0   | 0   | 31        |
| December   | 11    | 5    | 10   | 1     | 0     | 0     | 2   | 0   | 29        |
| <b>2012</b>  |       |      |      |       |       |       |     |     |           |
| March  | 14    | 4    | 9    | 5     | 3     | 2     | 0   | 0   | 37        |
| June   | 13    | 5    | 8    | 0     | 0     | 1     | 0   | 0   | 27        |
| September  | 9     | 10   | 21   | 2     | 3     | 0     | 2   | 0   | 47        |
| December   | 14    | 11   | 7    | 3     | 2     | 0     | 0   | 0   | 37        |
| <b>2013</b>  |       |      |      |       |       |       |     |     |           |
| March  | 5     | 4    | 8    | 4     | 0     | 1     | 0   | 0   | 22        |
| <b>12 Months ended</b>                                   |       |      |      |       |       |       |     |     |           |
| March 2012   | 53    | 21   | 36   | 13    | 12    | 4     | 2   | 0   | 141       |
| March 2013   | 41    | 30   | 44   | 9     | 5     | 2     | 2   | 0   | 133       |
| % change   | -22.6 | 42.9 | 22.2 | -30.8 | -58.3 | -50.0 | 0.0 | -   | -5.7      |
| <b>Average annual % change over 3 years <sup>a</sup></b> |       |      |      |       |       |       |     |     |           |
| <b>12 mths end Mar 2010</b>                              |       |      |      |       |       |       |     |     |           |
| to 12 mths end Mar 2013                                  | -7.3  | 7.9  | 5.6  | 0.5   | -28.7 | -29.3 | 7.2 | -   | -3.1      |

a Average annual percentage change based on the exponential trend for the last three 12-month periods.

**Table 3 Deaths from crashes involving articulated trucks by State/Territory and road user — 12 months ended March 2013**

|                             | NSW | Vic | Qld | SA | WA | Tas | NT | ACT | Australia |
|-----------------------------|-----|-----|-----|----|----|-----|----|-----|-----------|
| Drivers <sup>b</sup>        | 29  | 20  | 23  | 6  | 4  | 0   | 2  | 0   | 84        |
| Passengers <sup>b</sup>     | 8   | 3   | 14  | 1  | 1  | 1   | 0  | 0   | 28        |
| Pedestrians                 | 2   | 5   | 5   | 1  | 0  | 1   | 0  | 0   | 14        |
| Motor cyclists <sup>c</sup> | 2   | 2   | 2   | 1  | 0  | 0   | 0  | 0   | 7         |
| Cyclists                    | 0   | 0   | 0   | 0  | 0  | 0   | 0  | 0   | 0         |
| All road users <sup>d</sup> | 41  | 30  | 44  | 9  | 5  | 2   | 2  | 0   | 133       |

b Includes drivers/passengers of light and heavy vehicles

c Includes pillion passengers

d Includes road users not separately specified

**Table 4 Deaths from crashes involving articulated trucks by State/Territory and crash type — 12 months ended March 2013**

|                          | NSW | Vic | Qld | SA | WA | Tas | NT | ACT | Australia |
|--------------------------|-----|-----|-----|----|----|-----|----|-----|-----------|
| Single vehicle crashes   | 9   | 3   | 4   | 1  | 0  | 0   | 0  | 0   | 17        |
| Multiple vehicle crashes | 30  | 22  | 35  | 7  | 5  | 1   | 2  | 0   | 102       |
| Pedestrian crashes       | 2   | 5   | 5   | 1  | 0  | 1   | 0  | 0   | 14        |
| All crash types          | 41  | 30  | 44  | 9  | 5  | 2   | 2  | 0   | 133       |

## HEAVY RIGID TRUCK INVOLVEMENT

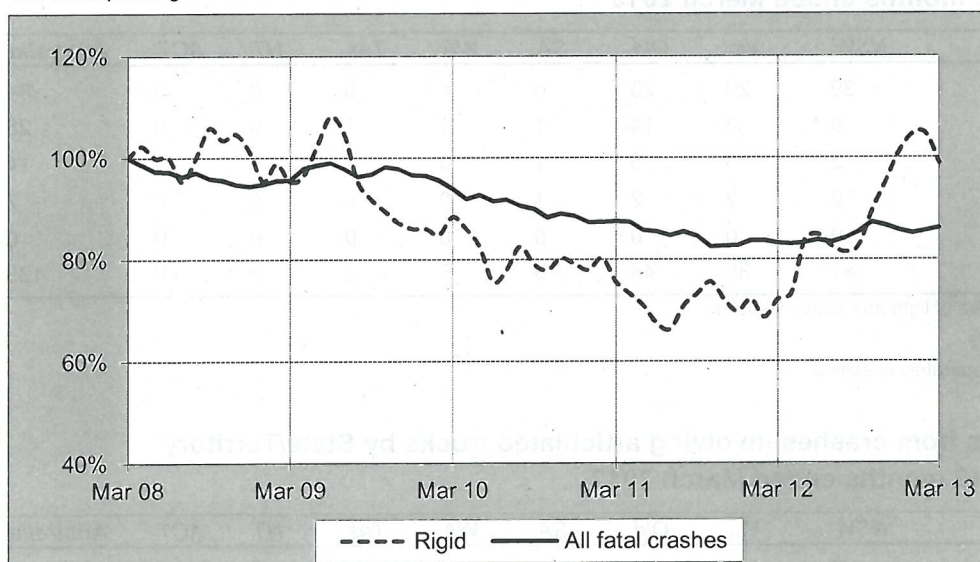
**Table 5 Fatal crashes involving heavy rigid trucks by State/Territory**

|  | NSW  | Vic  | Qld  | SA   | WA    | Tas | NT    | ACT | Australia |
|--|------|------|------|------|-------|-----|-------|-----|-----------|
| <b>Calendar Years</b>                                    |      |      |      |      |       |     |       |     |           |
| 2007   | 28   | 24   | 10   | 5    | 10    | 1   | 1     | 1   | 80        |
| 2008   | 12   | 24   | 21   | 9    | 17    | 2   | 2     | 0   | 87        |
| 2009   | 23   | 18   | 13   | 2    | 16    | 1   | 1     | 0   | 74        |
| 2010   | 20   | 19   | 12   | 2    | 10    | 4   | 0     | 1   | 68        |
| 2011   | 15   | 14   | 13   | 6    | 8     | 2   | 2     | 0   | 60        |
| 2012   | 22   | 16   | 23   | 6    | 16    | 2   | 1     | 1   | 87        |
| <b>Quarters</b>  |      |      |      |      |       |     |       |     |           |
| 2011   |      |      |      |      |       |     |       |     |           |
| March  | 5    | 3    | 1    | 1    | 4     | 2   | 0     | 0   | 16        |
| June   | 2    | 2    | 3    | 2    | 2     | 0   | 0     | 0   | 11        |
| September  | 3    | 6    | 7    | 3    | 1     | 0   | 2     | 0   | 22        |
| December   | 5    | 3    | 2    | 0    | 1     | 0   | 0     | 0   | 11        |
| 2012   |      |      |      |      |       |     |       |     |           |
| March  | 5    | 4    | 4    | 1    | 4     | 0   | 0     | 0   | 18        |
| June   | 5    | 2    | 8    | 2    | 3     | 1   | 1     | 0   | 22        |
| September  | 7    | 5    | 3    | 0    | 4     | 1   | 0     | 0   | 20        |
| December   | 5    | 5    | 8    | 3    | 5     | 0   | 0     | 1   | 27        |
| 2013   |      |      |      |      |       |     |       |     |           |
| March  | 4    | 4    | 2    | 2    | 4     | 0   | 0     | 0   | 16        |
| <b>12 Months ended</b>                                   |      |      |      |      |       |     |       |     |           |
| March 2012   | 15   | 15   | 16   | 6    | 8     | 0   | 2     | 0   | 62        |
| March 2013   | 21   | 16   | 21   | 7    | 16    | 2   | 1     | 1   | 85        |
| % change   | 40.0 | 6.7  | 31.3 | 16.7 | 100.0 | -   | -50.0 | -   | 37.1      |
| <b>Average annual % change over 3 years <sup>a</sup></b> |      |      |      |      |       |     |       |     |           |
| 12 mths end Mar 2010                                     |      |      |      |      |       |     |       |     |           |
| to 12 mths end Mar 2013                                  | -9.4 | -4.7 | 25.0 | 62.5 | 0.0   | -   | -     | -   | 2.9       |

a Average annual percentage change based on the exponential trend for the last three 12-month periods.

### Index of fatal crashes involving heavy rigid trucks in Australia — five years ended March 2013

Each point shows the number of fatal crashes in the preceding 12 months expressed as a percentage of the corresponding number of fatal crashes in the 12 months to the end of March 2008.



## HEAVY RIGID TRUCK INVOLVEMENT

**Table 6 Deaths from crashes involving heavy rigid trucks by State/Territory**

|   | NSW   | Vic   | Qld  | SA   | WA    | Tas | NT    | ACT | Australia |
|---|-------|-------|------|------|-------|-----|-------|-----|-----------|
| <b>Calendar Years</b>                                   |       |       |      |      |       |     |       |     |           |
| 2007  | 29    | 26    | 11   | 5    | 10    | 1   | 2     | 1   | 85        |
| 2008  | 12    | 25    | 24   | 10   | 18    | 2   | 2     | 0   | 93        |
| 2009  | 24    | 19    | 13   | 2    | 18    | 1   | 1     | 0   | 78        |
| 2010  | 24    | 24    | 15   | 2    | 12    | 5   | 0     | 1   | 83        |
| 2011  | 17    | 20    | 14   | 6    | 9     | 2   | 4     | 0   | 72        |
| 2012  | 23    | 17    | 27   | 7    | 19    | 4   | 1     | 1   | 99        |
| <b>Quarters</b>   |       |       |      |      |       |     |       |     |           |
| <b>2011</b>   |       |       |      |      |       |     |       |     |           |
| March   | 5     | 3     | 1    | 1    | 4     | 2   | 0     | 0   | 16        |
| June  | 2     | 2     | 4    | 2    | 3     | 0   | 0     | 0   | 13        |
| September   | 4     | 6     | 7    | 3    | 1     | 0   | 4     | 0   | 25        |
| December  | 6     | 9     | 2    | 0    | 1     | 0   | 0     | 0   | 18        |
| <b>2012</b>   |       |       |      |      |       |     |       |     |           |
| March   | 6     | 4     | 4    | 1    | 4     | 0   | 0     | 0   | 19        |
| June  | 5     | 2     | 9    | 3    | 3     | 1   | 1     | 0   | 24        |
| September   | 7     | 5     | 6    | 0    | 5     | 3   | 0     | 0   | 26        |
| December  | 5     | 6     | 8    | 3    | 7     | 0   | 0     | 1   | 30        |
| <b>2013</b>   |       |       |      |      |       |     |       |     |           |
| March   | 4     | 4     | 2    | 2    | 4     | 0   | 0     | 0   | 16        |
| <b>12 Months ended</b>                                  |       |       |      |      |       |     |       |     |           |
| March 2012  | 18    | 21    | 17   | 6    | 9     | 0   | 4     | 0   | 75        |
| March 2013  | 21    | 17    | 25   | 8    | 19    | 4   | 1     | 1   | 96        |
| % change  | 16.7  | -19.0 | 47.1 | 33.3 | 111.1 | -   | -75.0 | -   | 28.0      |
| <b>Average annual % change over 3 years<sup>a</sup></b> |       |       |      |      |       |     |       |     |           |
| <b>12 mths end Mar 2010</b>                             |       |       |      |      |       |     |       |     |           |
| to 12 mths end Mar 2013                                 | -10.6 | -3.3  | 29.5 | 69.2 | 0.7   | -   | -     | -   | 4.8       |

<sup>a</sup> Average annual percentage change based on the exponential trend for the last three 12-month periods.

**Table 7 Deaths from crashes involving heavy rigid trucks by State/Territory by road user — 12 months ended March 2013**

|                             | NSW | Vic | Qld | SA | WA | Tas | NT | ACT | Australia |
|-----------------------------|-----|-----|-----|----|----|-----|----|-----|-----------|
| Drivers <sup>b</sup>        | 14  | 11  | 11  | 4  | 11 | 0   | 1  | 1   | 53        |
| Passengers <sup>b</sup>     | 5   | 0   | 4   | 1  | 2  | 3   | 0  | 0   | 15        |
| Pedestrians                 | 1   | 2   | 4   | 1  | 5  | 1   | 0  | 0   | 14        |
| Motor cyclists <sup>c</sup> | 1   | 3   | 4   | 1  | 1  | 0   | 0  | 0   | 10        |
| Cyclists                    | 0   | 1   | 2   | 1  | 0  | 0   | 0  | 0   | 4         |
| All road users <sup>d</sup> | 21  | 17  | 25  | 8  | 19 | 4   | 1  | 1   | 96        |

<sup>b</sup> Includes drivers/passengers of light vehicles

<sup>c</sup> Includes pillion passengers

<sup>d</sup> Includes road users not separately specified

**Table 8 Deaths from crashes involving heavy rigid trucks by State/Territory by crash type — 12 months ended March 2013**

|                          | NSW | Vic | Qld | SA | WA | Tas | NT | ACT | Australia |
|--------------------------|-----|-----|-----|----|----|-----|----|-----|-----------|
| Single vehicle crashes   | 2   | 1   | 0   | 0  | 1  | 0   | 0  | 0   | 4         |
| Multiple vehicle crashes | 18  | 14  | 21  | 7  | 13 | 3   | 1  | 1   | 78        |
| Pedestrian crashes       | 1   | 2   | 4   | 1  | 5  | 1   | 0  | 0   | 14        |
| All crash types          | 21  | 17  | 25  | 8  | 19 | 4   | 1  | 1   | 96        |



## BUS INVOLVEMENT

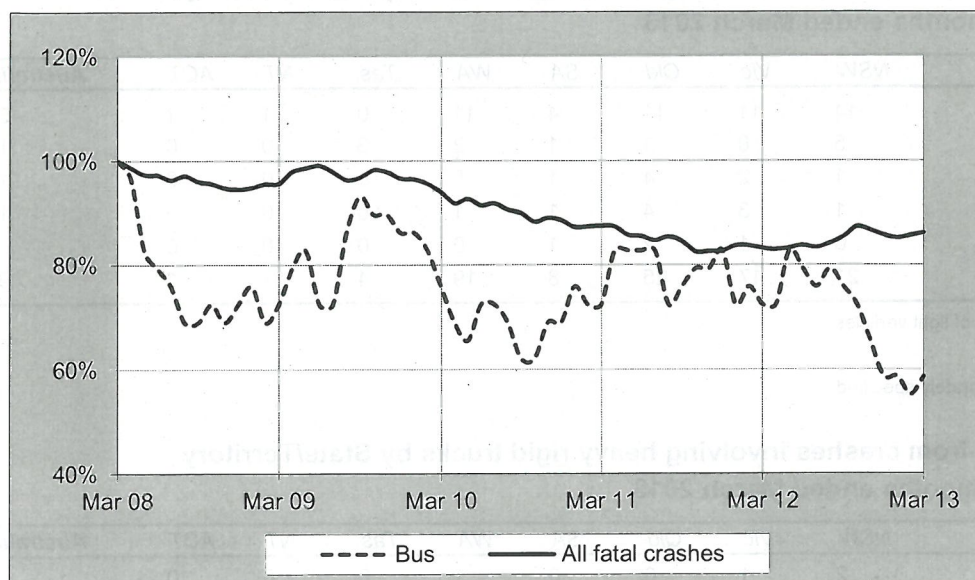
**Table 9 Fatal crashes involving buses by State/Territory**

|  | NSW   | Vic | Qld | SA | WA  | Tas | NT | ACT | Australia |
|--|-------|-----|-----|----|-----|-----|----|-----|-----------|
| <b>Calendar Years</b>                                    |       |     |     |    |     |     |    |     |           |
| 2007   | 11    | 4   | 7   | 1  | 2   | 0   | 0  | 0   | 25        |
| 2008   | 5     | 4   | 8   | 1  | 3   | 0   | 0  | 0   | 21        |
| 2009   | 8     | 6   | 8   | 2  | 0   | 1   | 0  | 0   | 25        |
| 2010   | 9     | 2   | 3   | 3  | 0   | 1   | 1  | 1   | 20        |
| 2011   | 11    | 5   | 7   | 0  | 1   | 0   | 0  | 0   | 24        |
| 2012   | 6     | 3   | 6   | 1  | 1   | 0   | 0  | 0   | 17        |
| <b>Quarters</b>  |       |     |     |    |     |     |    |     |           |
| <b>2011</b>  |       |     |     |    |     |     |    |     |           |
| March  | 2     | 1   | 2   | 0  | 0   | 0   | 0  | 0   | 5         |
| June   | 1     | 1   | 3   | 0  | 1   | 0   | 0  | 0   | 6         |
| September  | 3     | 1   | 2   | 0  | 0   | 0   | 0  | 0   | 6         |
| December   | 5     | 2   | 0   | 0  | 0   | 0   | 0  | 0   | 7         |
| <b>2012</b>  |       |     |     |    |     |     |    |     |           |
| March  | 1     | 0   | 1   | 0  | 0   | 0   | 0  | 0   | 2         |
| June   | 4     | 2   | 1   | 1  | 0   | 0   | 0  | 0   | 8         |
| September  | 1     | 1   | 2   | 0  | 1   | 0   | 0  | 0   | 5         |
| December   | 0     | 0   | 2   | 0  | 0   | 0   | 0  | 0   | 2         |
| <b>2013</b>  |       |     |     |    |     |     |    |     |           |
| March  | 0     | 1   | 1   | 0  | 0   | 0   | 0  | 0   | 2         |
| <b>12 Months ended</b>                                   |       |     |     |    |     |     |    |     |           |
| March 2012   | 10    | 4   | 6   | 0  | 1   | 0   | 0  | 0   | 21        |
| March 2013   | 5     | 4   | 6   | 1  | 1   | 0   | 0  | 0   | 17        |
| % change   | -50.0 | 0.0 | 0.0 | -  | 0.0 | -   | -  | -   | -19.0     |
| <b>Average annual % change over 3 years <sup>a</sup></b> |       |     |     |    |     |     |    |     |           |
| <b>12 mths end Mar 2010</b>                              |       |     |     |    |     |     |    |     |           |
| to 12 mths end Mar 2013                                  | -17.9 | 0.2 | 7.6 | -  | -   | -   | -  | -   | -7.4      |

a Average annual percentage change based on the exponential trend for the last three 12-month periods.

### Index of fatal crashes involving buses in Australia - five years ended March 2013

Each point shows the number of fatal crashes in the preceding 12 months expressed as a percentage of the corresponding number of fatal crashes in the 12 months to the end of March 2008



## BUS INVOLVEMENT

**Table 10 Deaths from crashes involving buses by State/Territory**

|  | NSW   | Vic   | Qld  | SA | WA  | Tas | NT | ACT | Australia |
|--|-------|-------|------|----|-----|-----|----|-----|-----------|
| <b>Calendar Years</b>                                    |       |       |      |    |     |     |    |     |           |
| 2007   | 11    | 4     | 7    | 1  | 2   | 0   | 0  | 0   | 25        |
| 2008   | 5     | 4     | 9    | 1  | 3   | 0   | 0  | 0   | 22        |
| 2009   | 9     | 9     | 10   | 2  | 0   | 1   | 0  | 0   | 31        |
| 2010   | 9     | 2     | 4    | 3  | 0   | 1   | 1  | 1   | 21        |
| 2011   | 11    | 5     | 8    | 0  | 1   | 0   | 0  | 0   | 25        |
| 2012   | 6     | 3     | 7    | 1  | 1   | 0   | 0  | 0   | 18        |
| <b>Quarters</b>  |       |       |      |    |     |     |    |     |           |
| <b>2011</b>  |       |       |      |    |     |     |    |     |           |
| March  | 2     | 1     | 3    | 0  | 0   | 0   | 0  | 0   | 6         |
| June   | 1     | 1     | 3    | 0  | 1   | 0   | 0  | 0   | 6         |
| September  | 3     | 1     | 2    | 0  | 0   | 0   | 0  | 0   | 6         |
| December   | 5     | 2     | 0    | 0  | 0   | 0   | 0  | 0   | 7         |
| <b>2012</b>  |       |       |      |    |     |     |    |     |           |
| March  | 1     | 0     | 1    | 0  | 0   | 0   | 0  | 0   | 2         |
| June   | 4     | 2     | 1    | 1  | 0   | 0   | 0  | 0   | 8         |
| September  | 1     | 1     | 3    | 0  | 1   | 0   | 0  | 0   | 6         |
| December   | 0     | 0     | 2    | 0  | 0   | 0   | 0  | 0   | 2         |
| <b>2013</b>  |       |       |      |    |     |     |    |     |           |
| March  | 0     | 1     | 2    | 0  | 0   | 0   | 0  | 0   | 3         |
| <b>12 Months ended</b>                                   |       |       |      |    |     |     |    |     |           |
| March 2012   | 10    | 4     | 6    | 0  | 1   | 0   | 0  | 0   | 21        |
| March 2013   | 5     | 4     | 8    | 1  | 1   | 0   | 0  | 0   | 19        |
| % change   | -50.0 | 0.0   | 33.3 | -  | 0.0 | -   | -  | -   | -9.5      |
| <b>Average annual % change over 3 years <sup>a</sup></b> |       |       |      |    |     |     |    |     |           |
| 12 mths end Mar 2010                                     |       |       |      |    |     |     |    |     |           |
| to 12 mths end Mar 2013                                  | -20.2 | -12.9 | 2.5  | -  | -   | -   | -  | -   | -11.8     |

<sup>a</sup> Average annual percentage change based on the exponential trend for the last three 12-month periods.

**Table 11 Deaths from crashes involving buses by State/Territory by road user - 12 months ended March 2013**

|                             | NSW | Vic | Qld | SA | WA | Tas | NT | ACT | Australia |
|-----------------------------|-----|-----|-----|----|----|-----|----|-----|-----------|
| Drivers <sup>b</sup>        | 1   | 1   | 3   | 0  | 0  | 0   | 0  | 0   | 5         |
| Passengers <sup>b</sup>     | 1   | 0   | 3   | 1  | 0  | 0   | 0  | 0   | 5         |
| Pedestrians                 | 3   | 1   | 1   | 0  | 0  | 0   | 0  | 0   | 5         |
| Motor cyclists <sup>c</sup> | 0   | 1   | 1   | 0  | 1  | 0   | 0  | 0   | 3         |
| Cyclists                    | 0   | 1   | 0   | 0  | 0  | 0   | 0  | 0   | 1         |
| All road users <sup>d</sup> | 5   | 4   | 8   | 1  | 1  | 0   | 0  | 0   | 19        |

<sup>b</sup> Includes drivers/passengers of light vehicles

<sup>c</sup> Includes pillion passengers

<sup>d</sup> Includes road users not separately specified

**Table 12 Deaths from crashes involving buses by State/Territory by crash type - 12 months ended March 2013**

|                          | NSW | Vic | Qld | SA | WA | Tas | NT | ACT | Australia |
|--------------------------|-----|-----|-----|----|----|-----|----|-----|-----------|
| Single vehicle crashes   | 0   | 0   | 0   | 1  | 1  | 0   | 0  | 0   | 2         |
| Multiple vehicle crashes | 2   | 3   | 7   | 0  | 0  | 0   | 0  | 0   | 12        |
| Pedestrian crashes       | 3   | 1   | 1   | 0  | 0  | 0   | 0  | 0   | 5         |
| All crash types          | 5   | 4   | 8   | 1  | 1  | 0   | 0  | 0   | 19        |

## APPENDIX

### Glossary

**Note.** The following definitions are general explanations only. The precise definitions vary across the organisations that provide the source data. These differences may result in minor inconsistencies between jurisdictions for some variables.

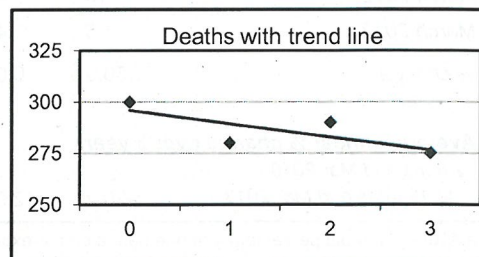
|                                 |   |
|---------------------------------|---|
| <i>Articulated truck</i>        | A motor vehicle primarily for load carrying, consisting of a prime mover that has no significant load carrying area but with a turntable device which can be linked to one or more trailers.            |
| <i>Bus</i>                      | A motor vehicle constructed for the carriage of passengers which has at least 10 seats, including the driver's seat.  |
| <i>Crash</i>                    | Any apparently unpremeditated event reported to police, or other relevant authority, and resulting in death, injury or property damage attributable to the movement of a road vehicle on a public road. |
| <i>Death</i>                    | A person who dies within 30 days of a crash as a result of injuries received in that crash.   |
| <i>Fatal crash</i>              | A crash for which there is at least one death.  |
| <i>Gross Vehicle Mass (GVM)</i> | Tare weight (i.e. unladen weight) of the motor vehicle plus its maximum carrying capacity excluding trailers.   |
| <i>Heavy rigid truck</i>        | A motor vehicle of GVM greater than 4.5 tonnes constructed with a load carrying area. Includes a rigid truck with a tow bar, draw bar or other non-articulated coupling on the rear of the vehicle.     |

**Preliminary data** Data for recent months are preliminary and subject to revision.

### Estimation of three year trends

In this bulletin, the figures for the 'Average annual per cent change over 3 years' are calculated by fitting an exponential trend line to the last four data points (years 0 to 3). The Excel function LOGEST performs the fit. The resulting trend line represents a constant annual percent change over the period. An example is given below:

| Cell Ref.               | A    | B      | C        |
|-------------------------|------|--------|----------|
|                         | Year | Deaths | % change |
| 1                       | 0    | 300    |          |
| 2                       | 1    | 280    | -7%      |
| 3                       | 2    | 290    | 4%       |
| 4                       | 3    | 275    | -5%      |
| Average annual change = |      |        | -2.2%    |



Average annual change = INDEX (LOGEST (B1:B4 , A1:A4) , 1) -1 = -2.2%

### Data Sources

The data presented here are obtained from the following sources:

- Transport for NSW
- Vicroads
- Department of Transport and Main Roads Queensland
- Department for Transport, Energy and Infrastructure, South Australia
- Western Australia Police
- Department of Infrastructure, Energy and Resources, Tasmania
- Department of Lands and Planning, Northern Territory
- Territory and Municipal Services, Australian Capital Territory

An online version of the database used to produce this bulletin is available from:

< [http://www.bitre.gov.au/statistics/safety/fatal\\_road\\_crash\\_database.aspx](http://www.bitre.gov.au/statistics/safety/fatal_road_crash_database.aspx) >

### Inquiries

For further information about data in this bulletin, contact:

Bureau of Infrastructure, Transport and Regional Economics  
 Department of Infrastructure and Transport  
 GPO Box 501 Canberra ACT 2601  
 Email: [roadsafety@infrastructure.gov.au](mailto:roadsafety@infrastructure.gov.au)  
 Internet: < <http://www.bitre.gov.au/> >