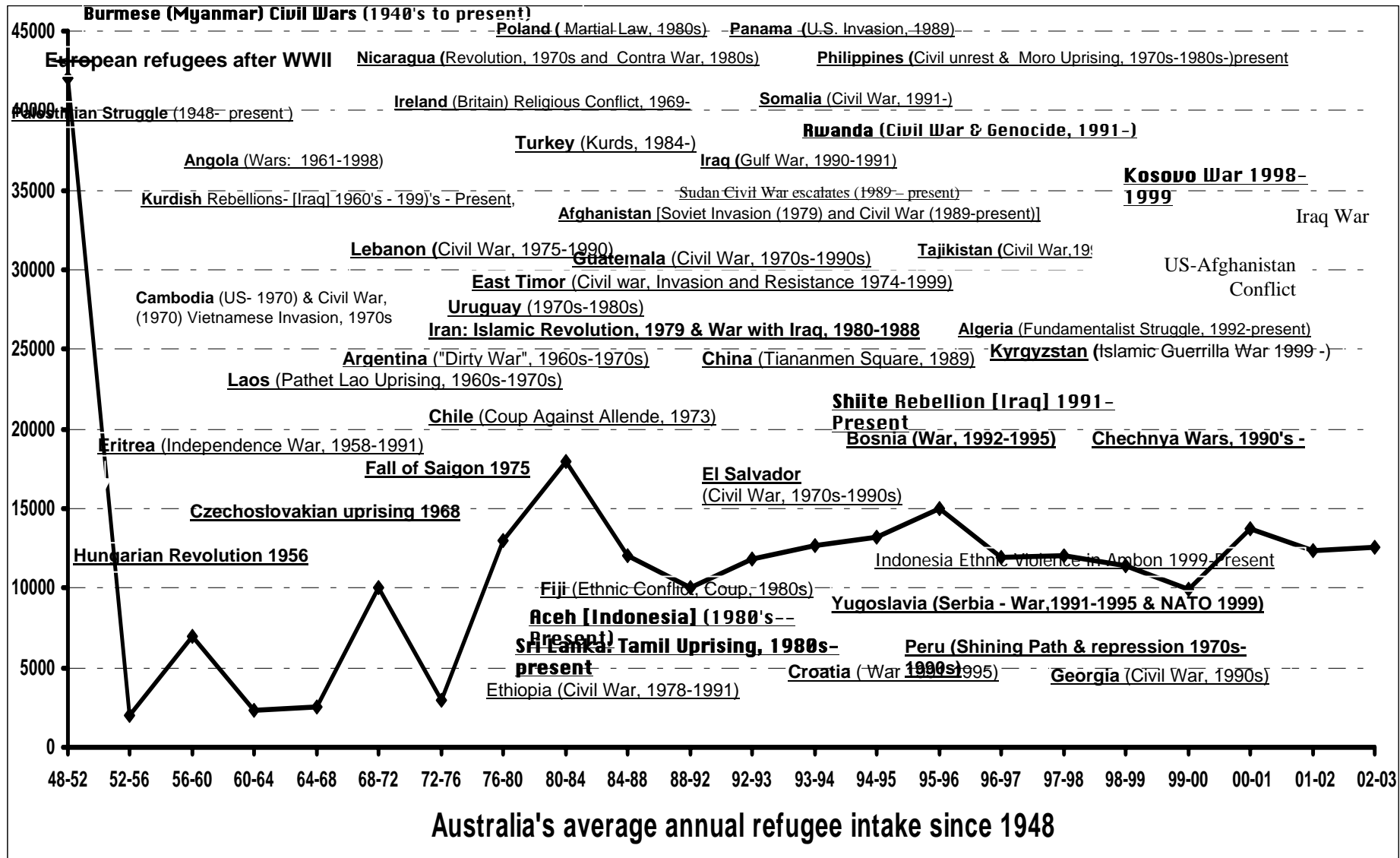


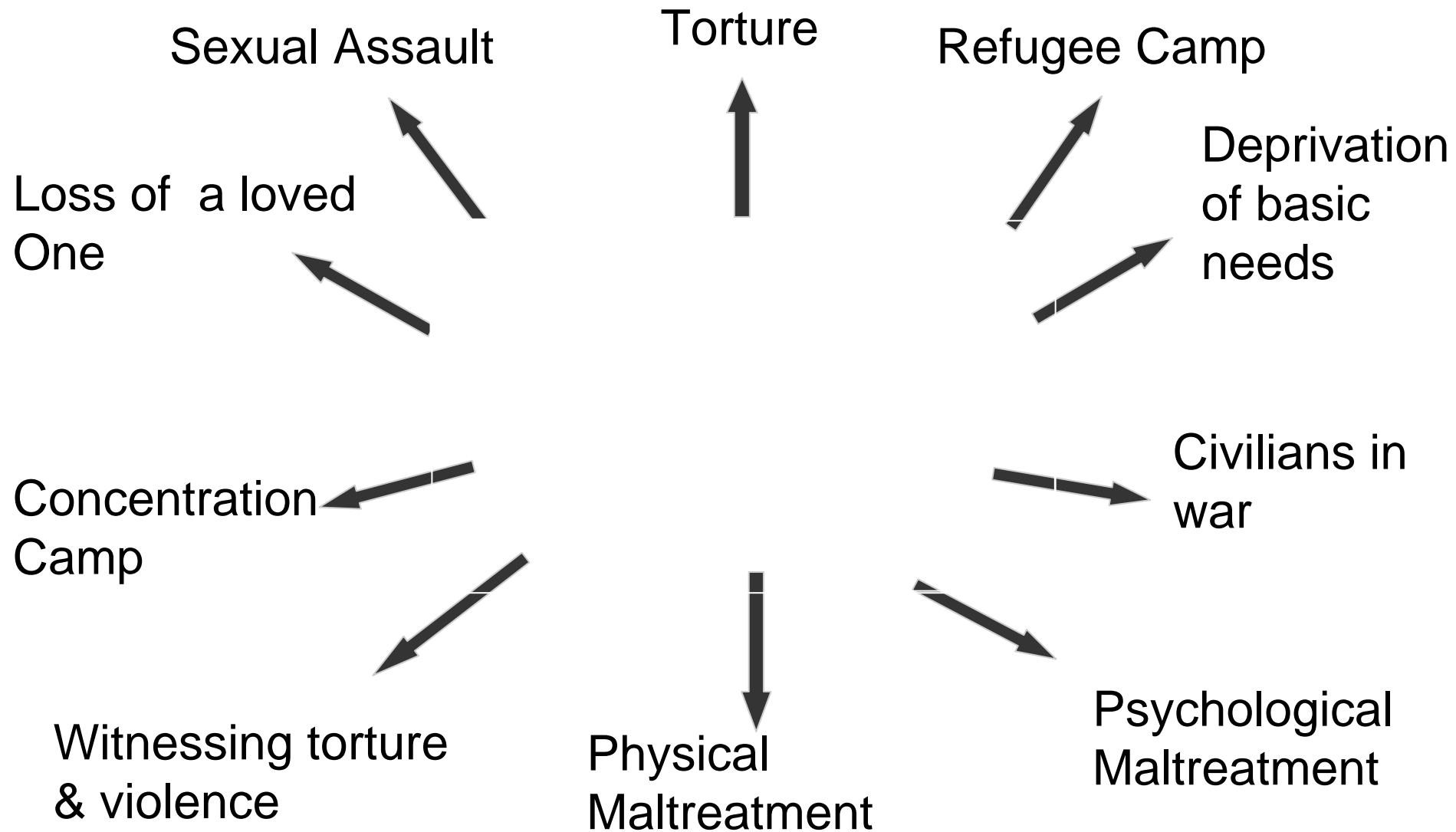
ne

n of

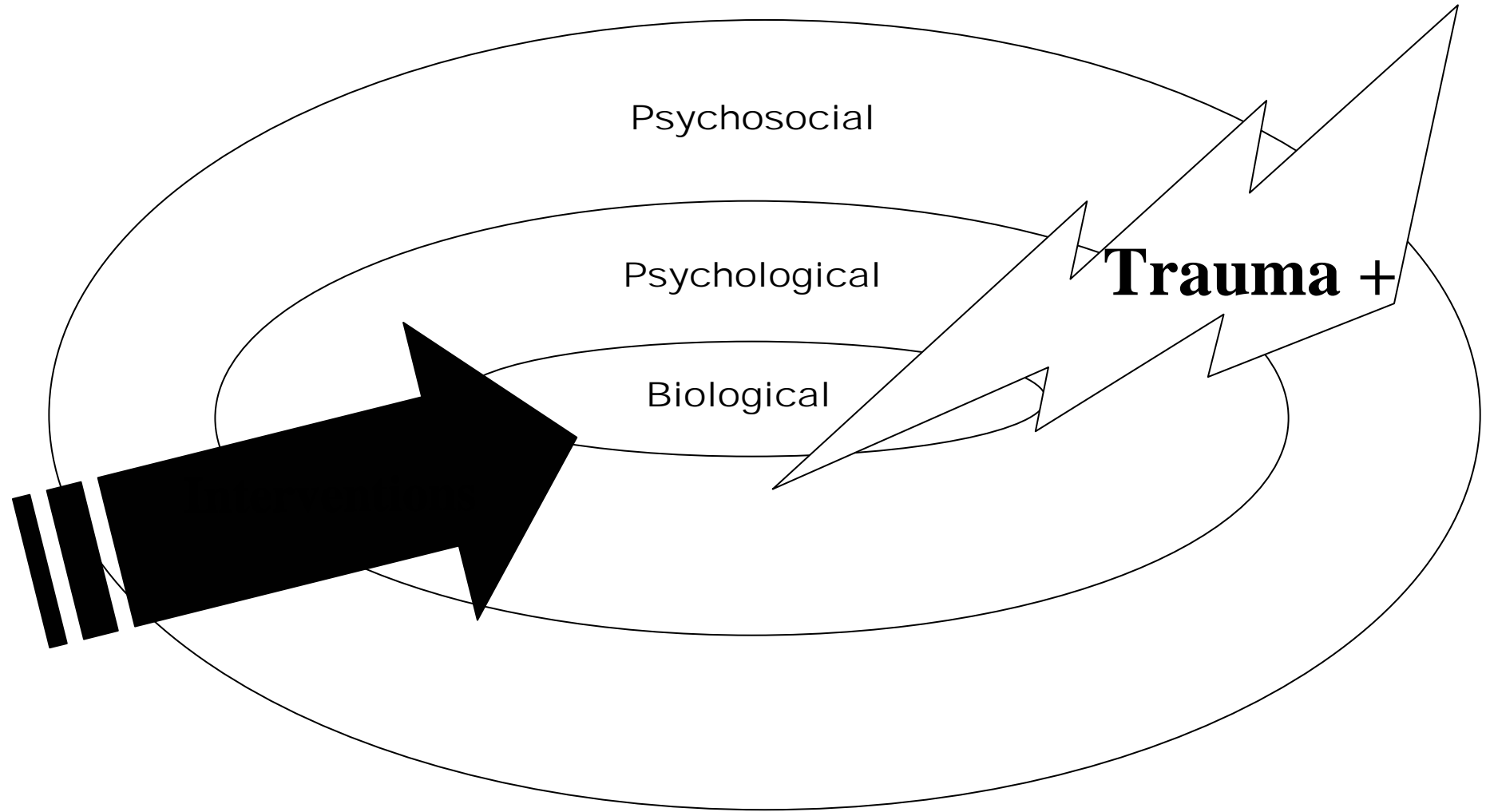
Australia's average annual refugee intake and some of the world conflicts since 1948



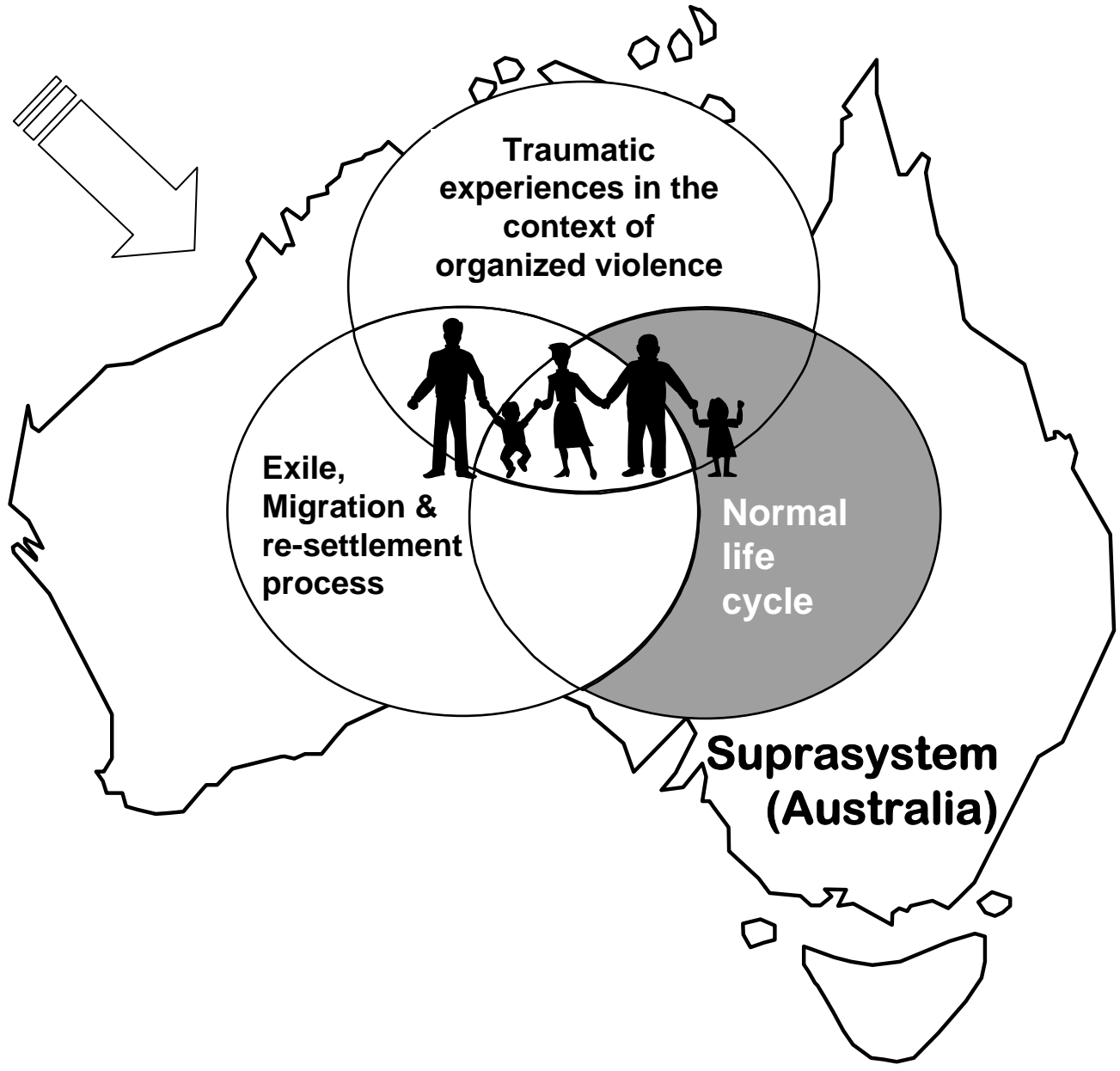
Australia's average annual refugee intake since 1948



A bio-psycho-social systemic approach



More effective and more cost effective to target interventions at the right level



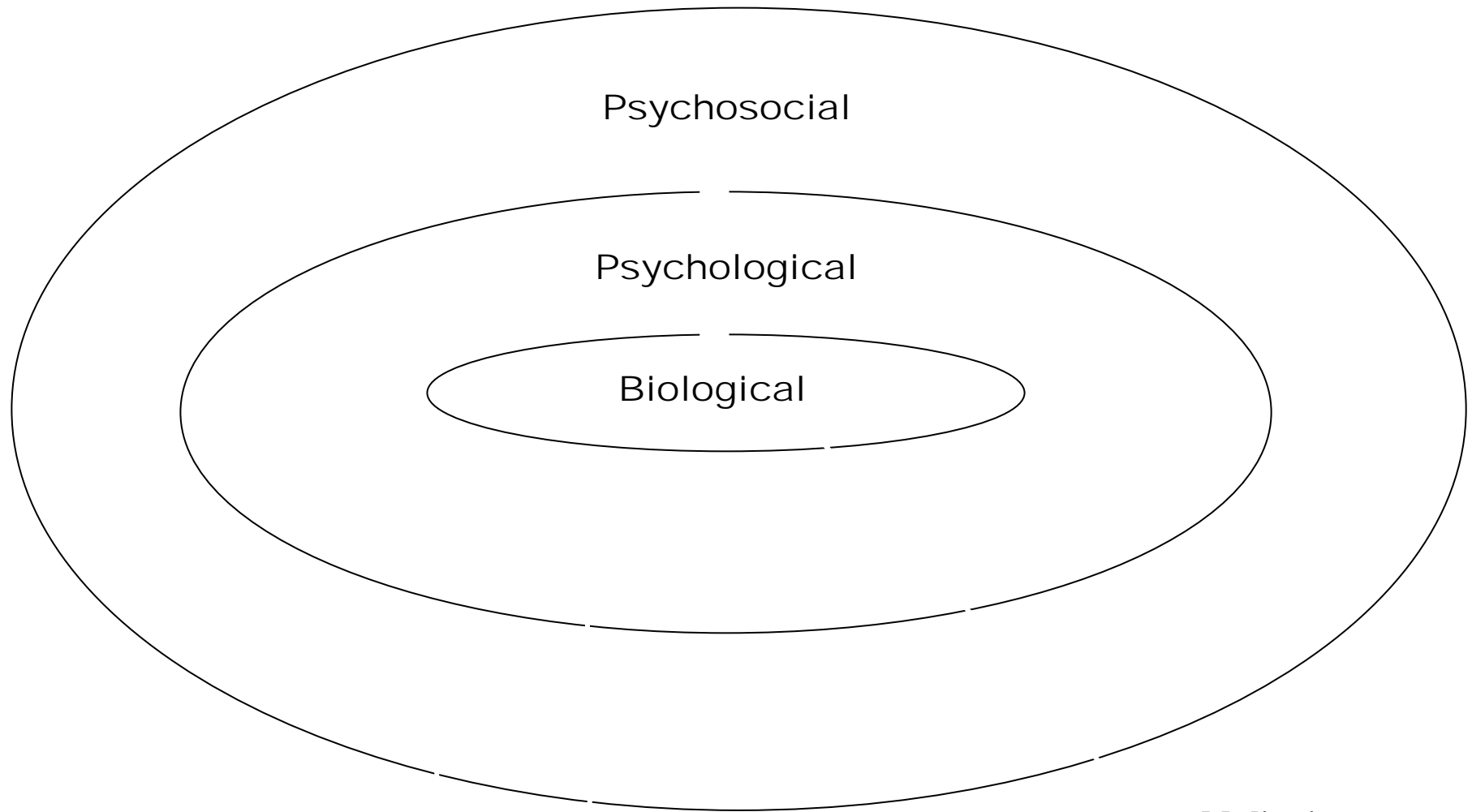
**Traumatic
experiences in the
context of
organized violence**

**Exile,
Migration &
re-settlement
process**

**Normal
life
cycle**

**Suprasystem
(Australia)**

A bio-psycho-social systemic approach



School programs, parental programs, family interventions, support groups, youth camp programs

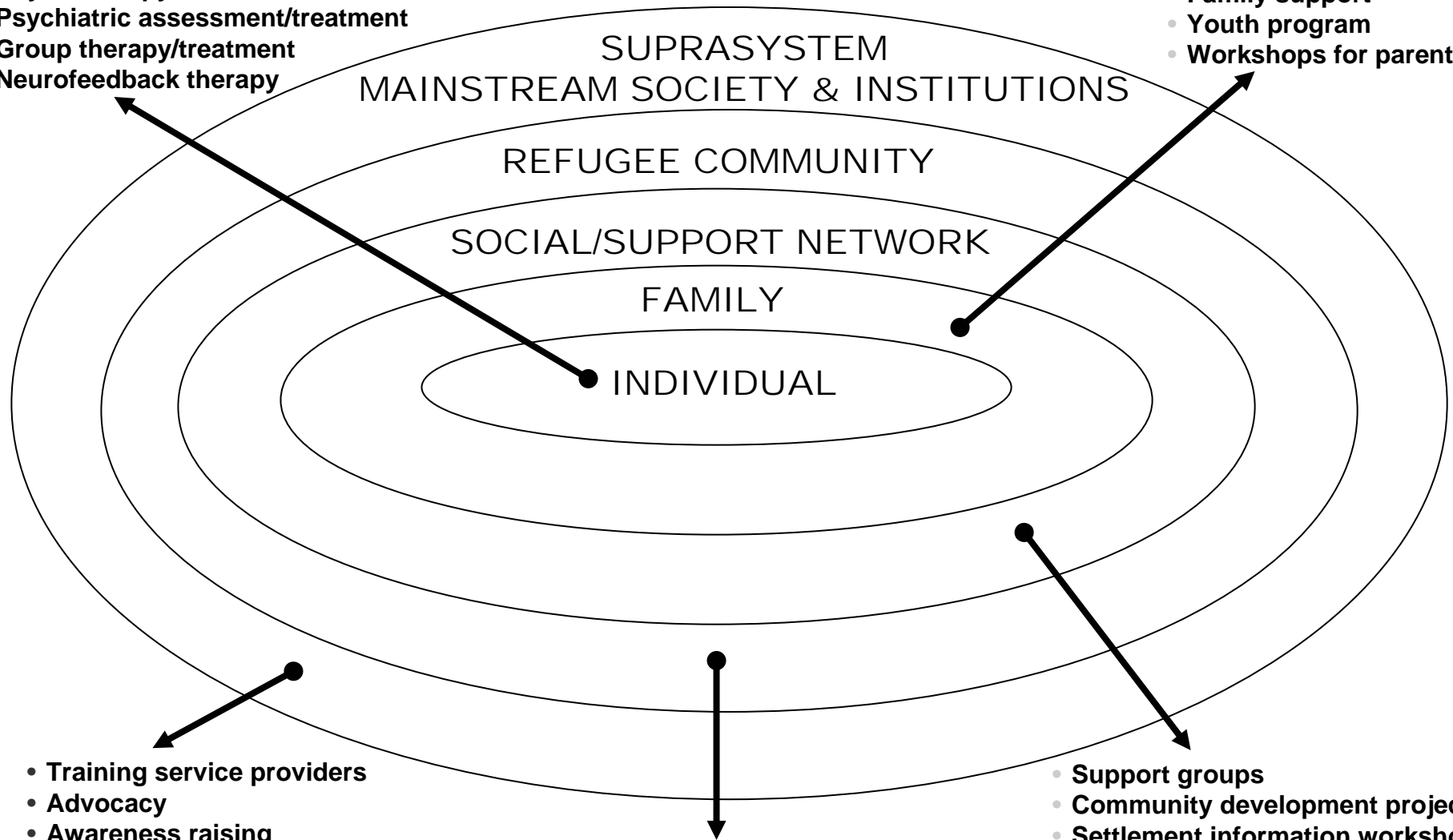
CBT, Counselling, EMDR, Psychoeducation, expressive therapies, etc

Medication, physiotherapy, Neurofeedback therapy

A bio-psycho-social systemic approach

- Assessment and Counselling
- Physiotherapy
- Psychiatric assessment/treatment
- Group therapy/treatment
- Neurofeedback therapy

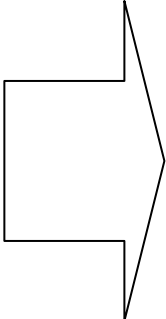
- Family therapy
- Family support
- Youth program
- Workshops for parents



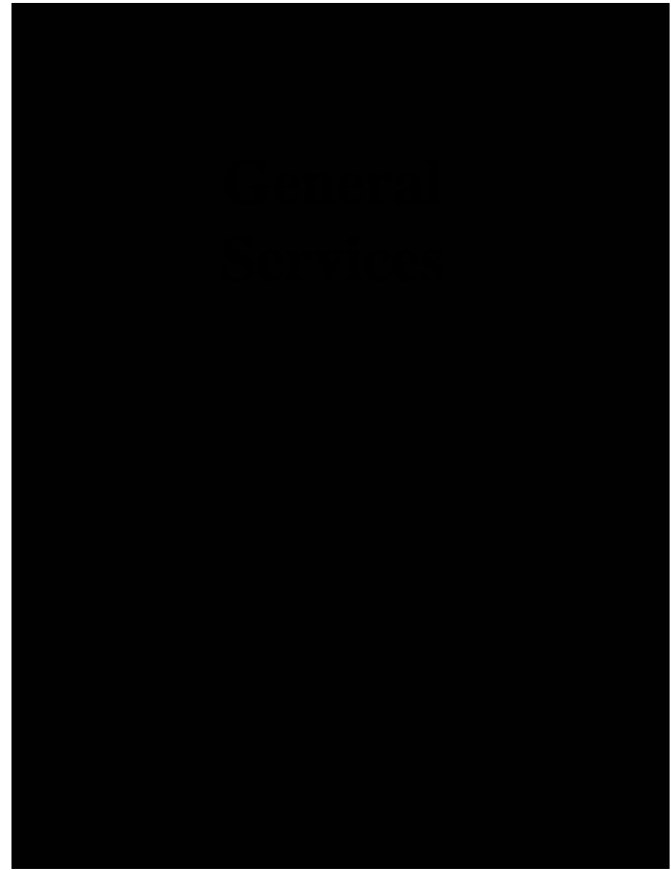
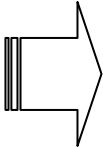
- Training service providers
- Advocacy
- Awareness raising
- Liaison with media/other agencies
- Consultancy
- Community education

- Community development projects
- Advocacy support
- Consultations
- Information/community education

- Support groups
- Community development projects
- Settlement information workshops
- Youth program
- Excursions
- English & craft classes



**Early
Intervention
Program**

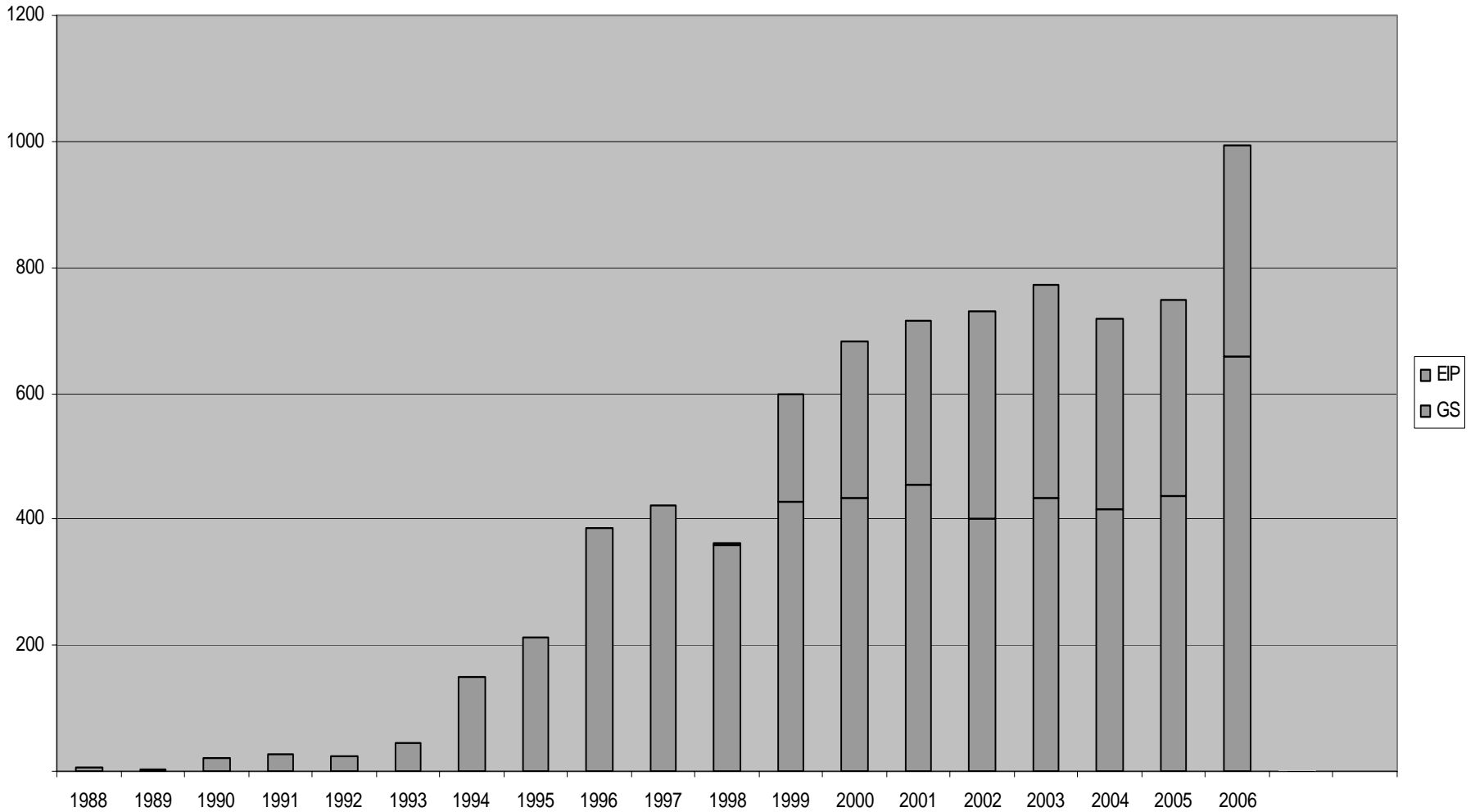


**Personal
Support
Program**

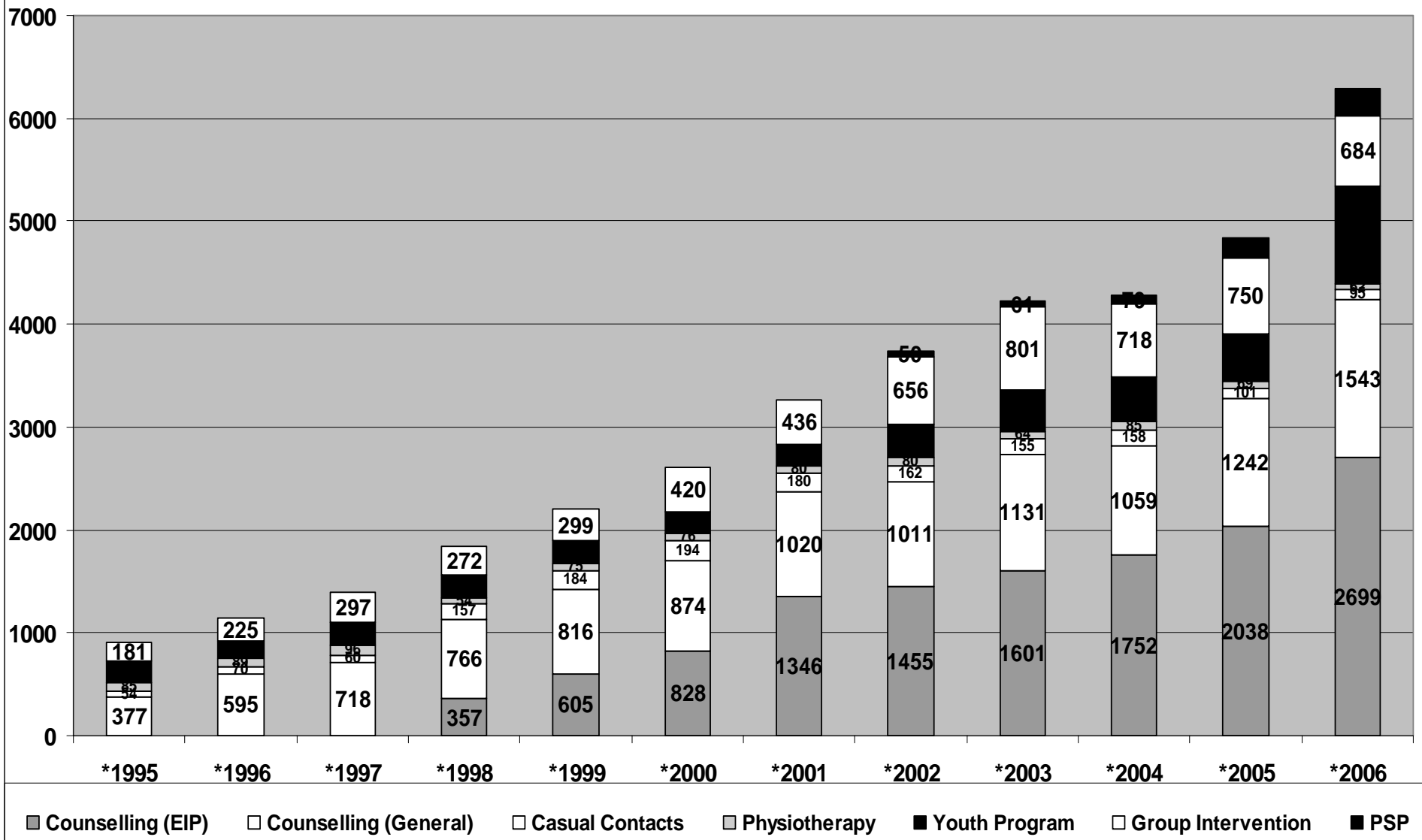
Youth Program



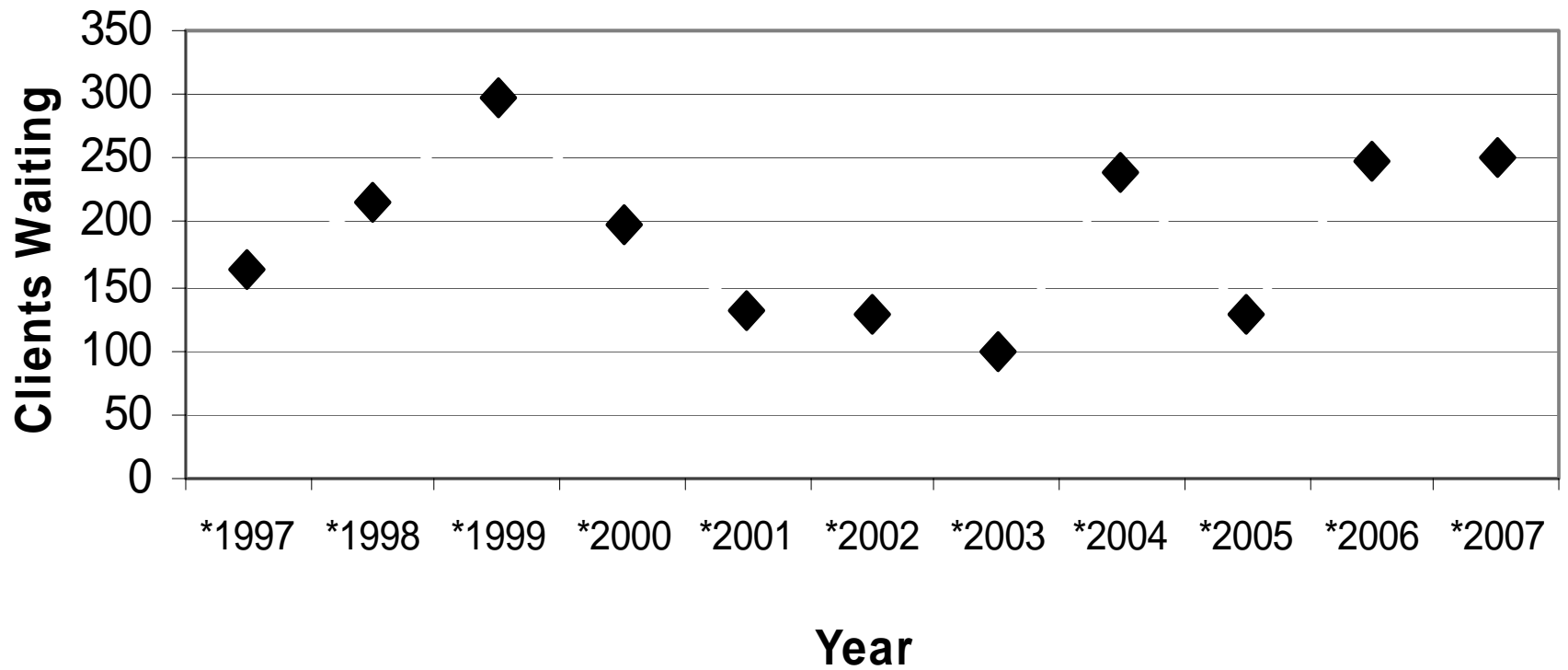
STARTTS Counselling referrals



Number of Clients Assisted by STARTTS 1995-2006

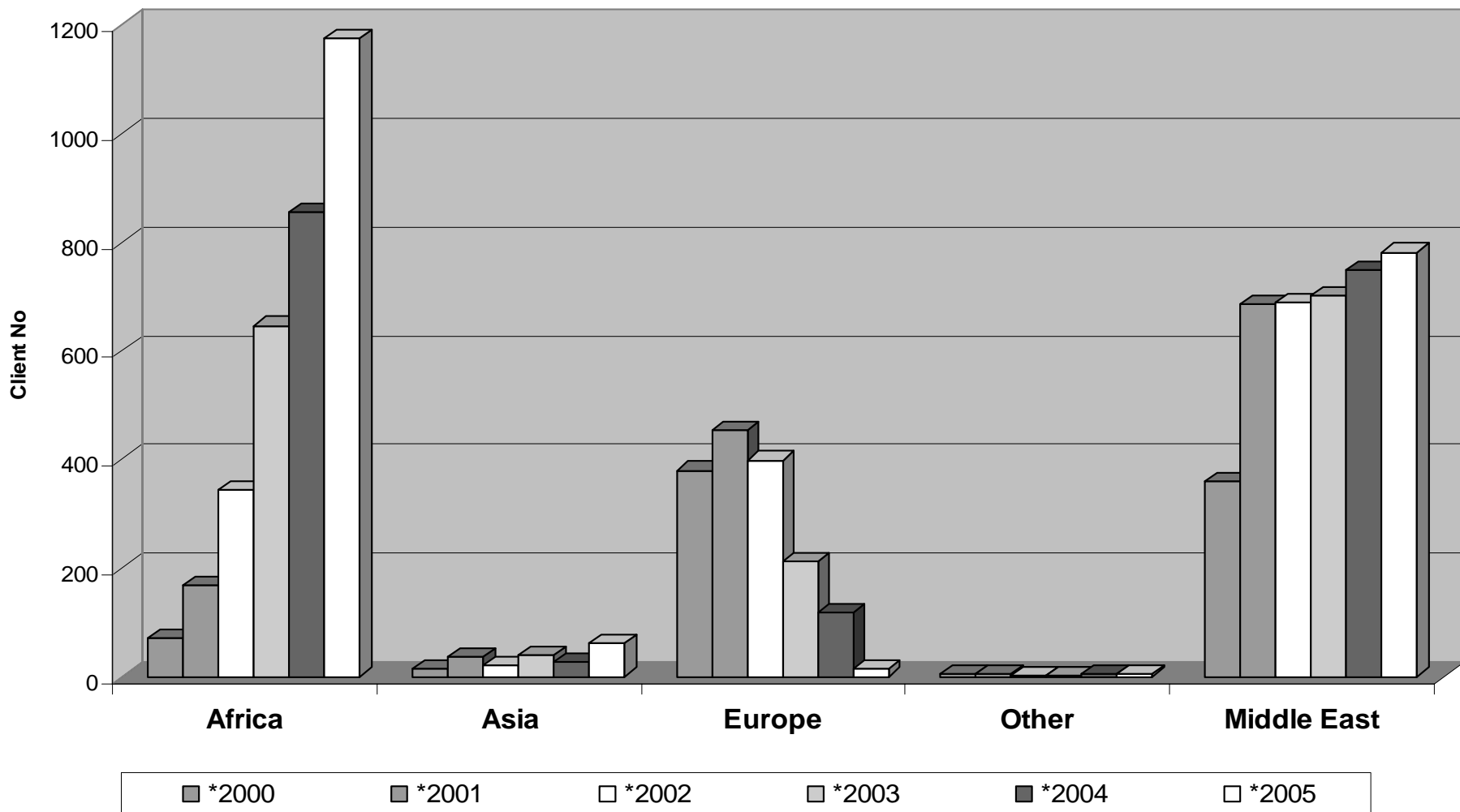


Waiting List Status as at 1st June in Various Years - General Services



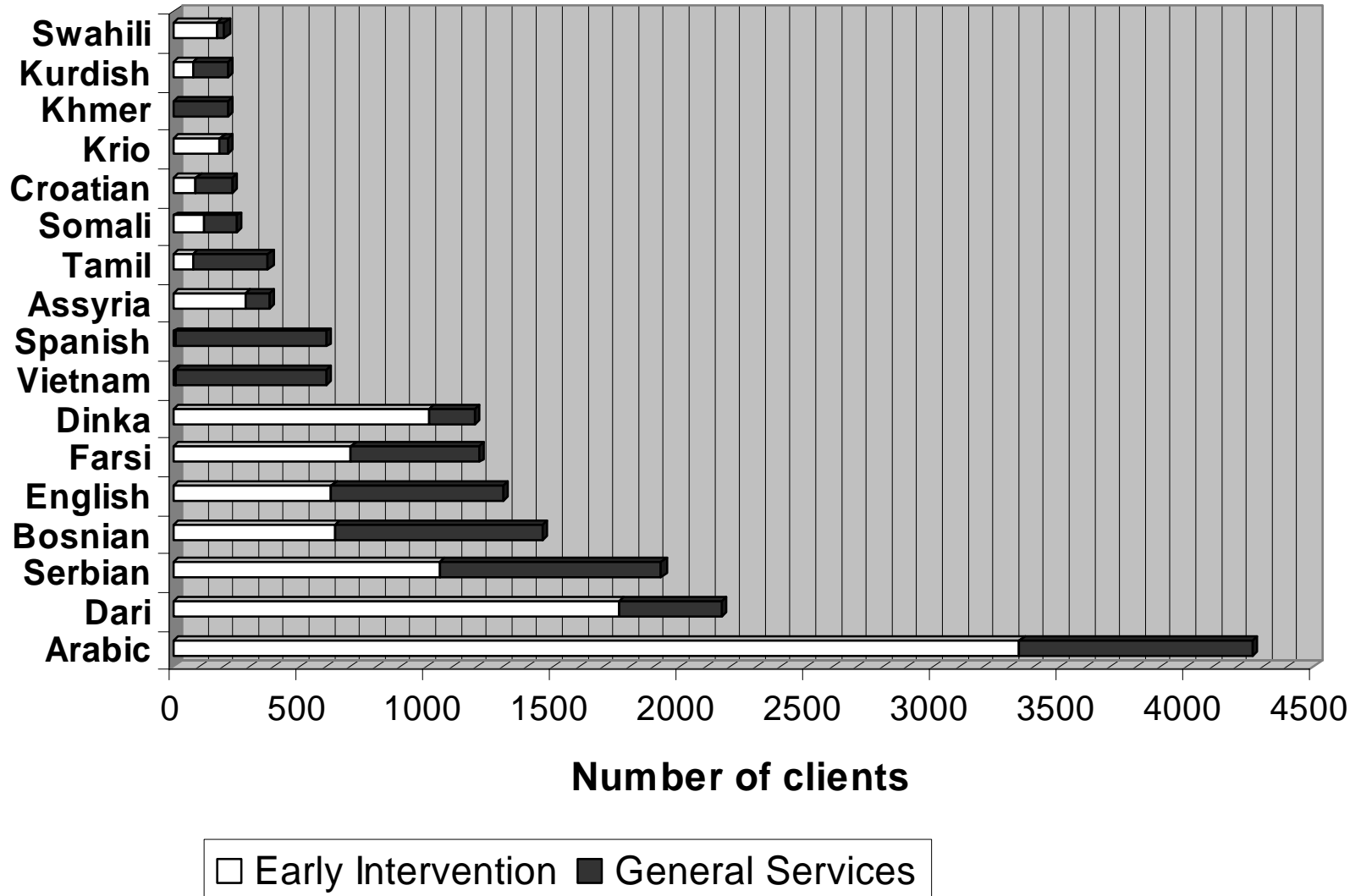
- Highly traumatized clients, multiple traumas and losses common *

Clients Assisted by STARTTS Early Intervention Program (EIP) 2000-2005

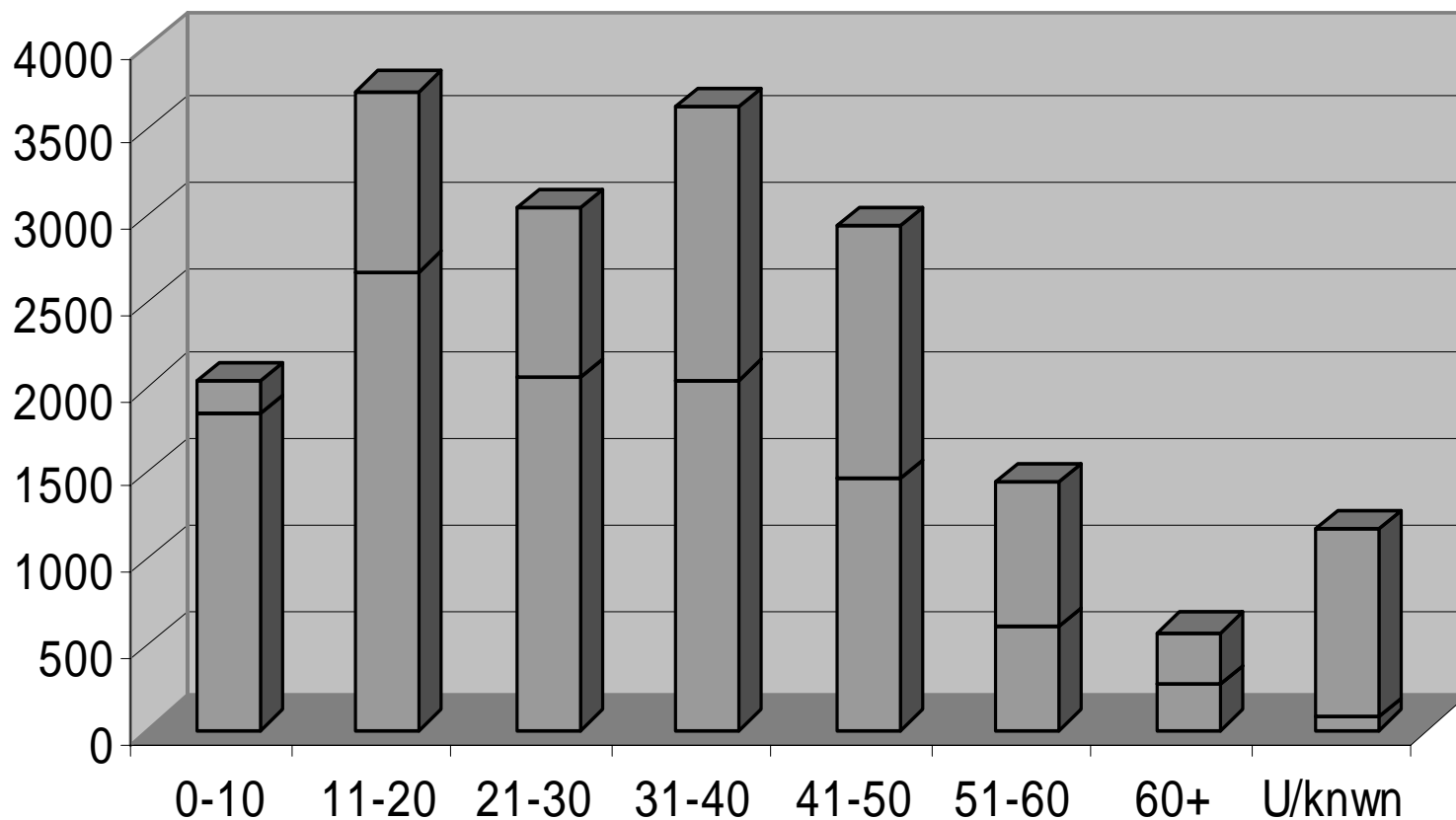


17 largest language groups by program

Language



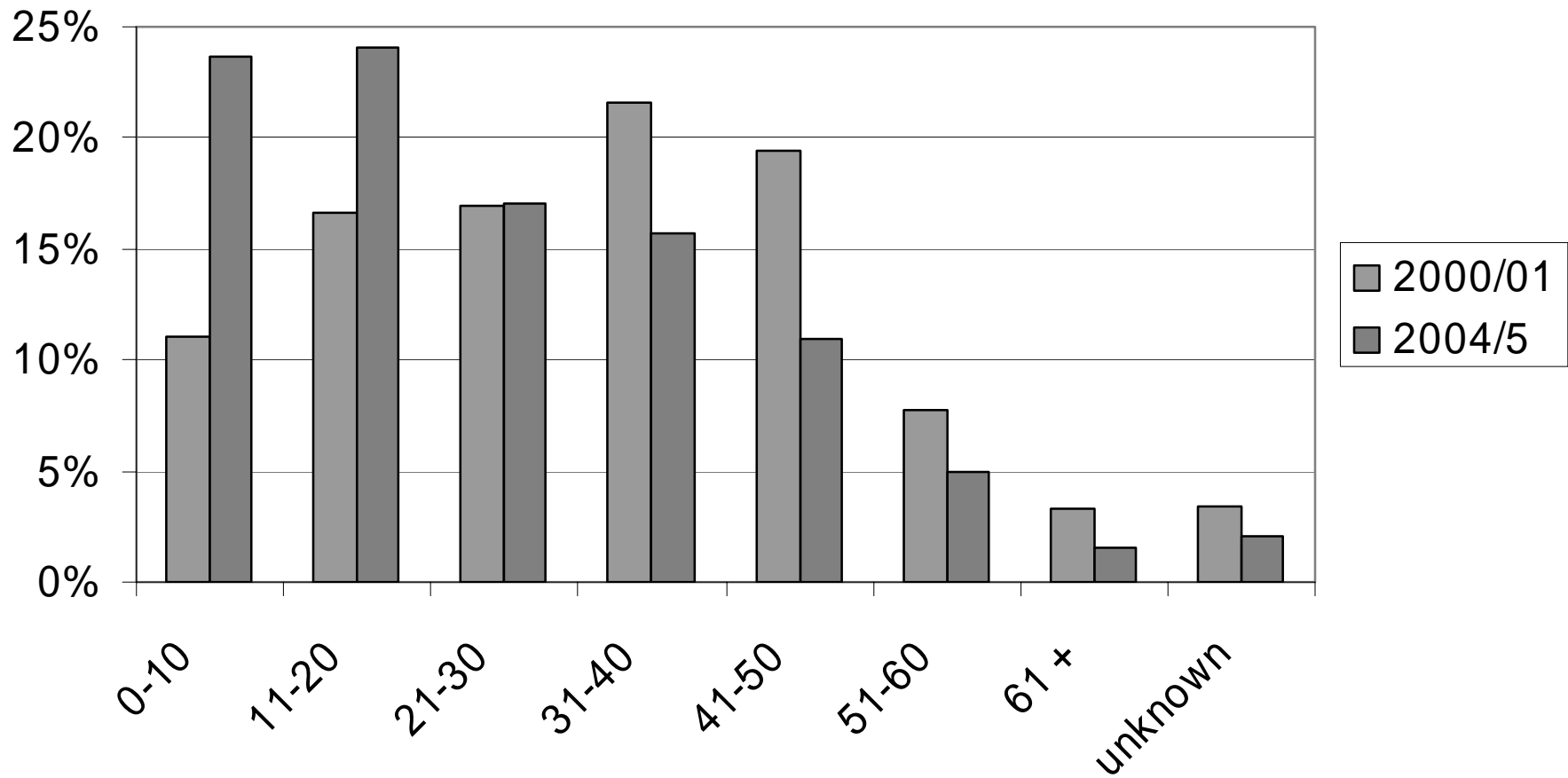
Age Distribution by Program



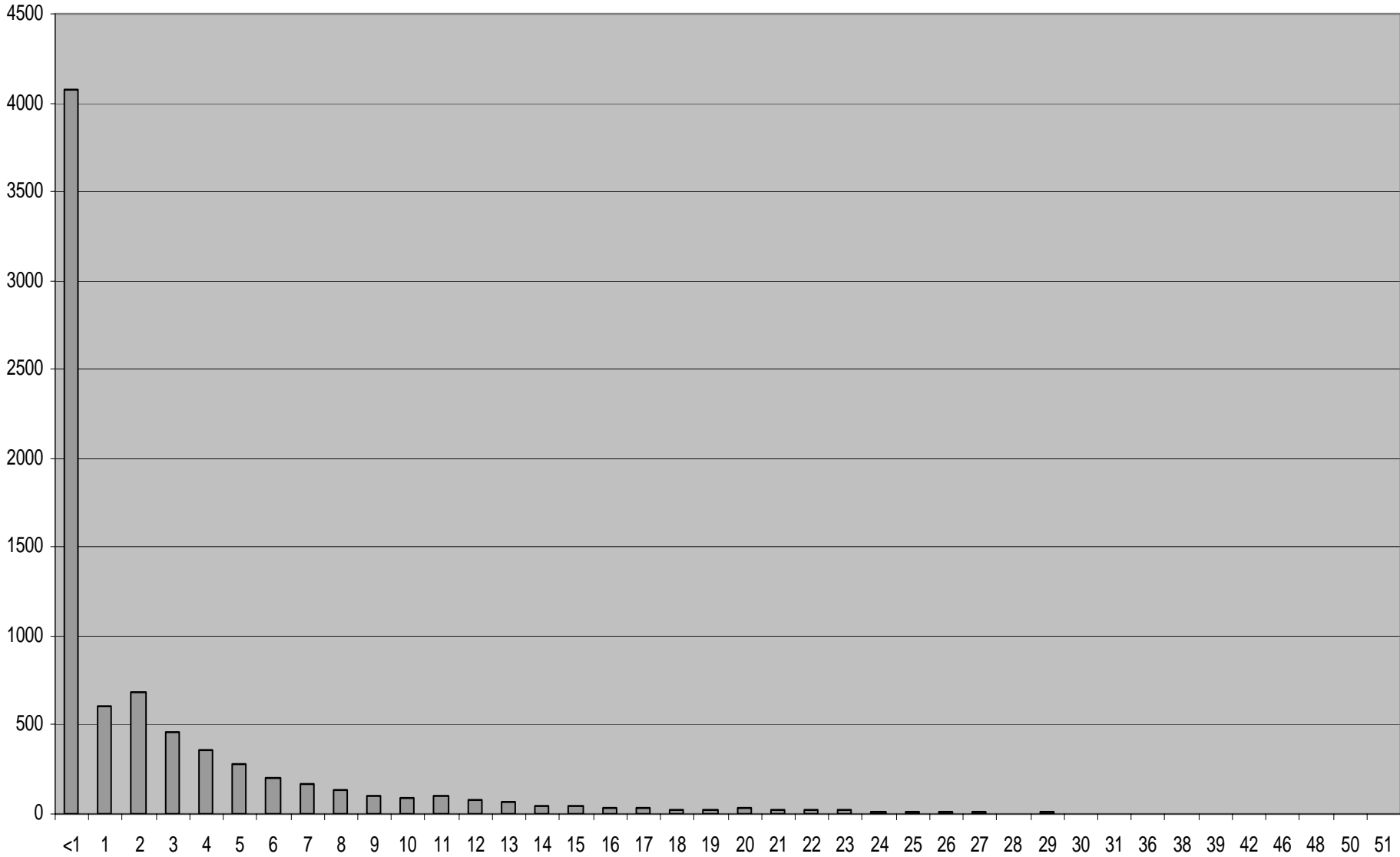
Age groups

■ Early Intervention ■ General Services

Age all clients %



STARTTS - Counselling referrals by lead time to referral

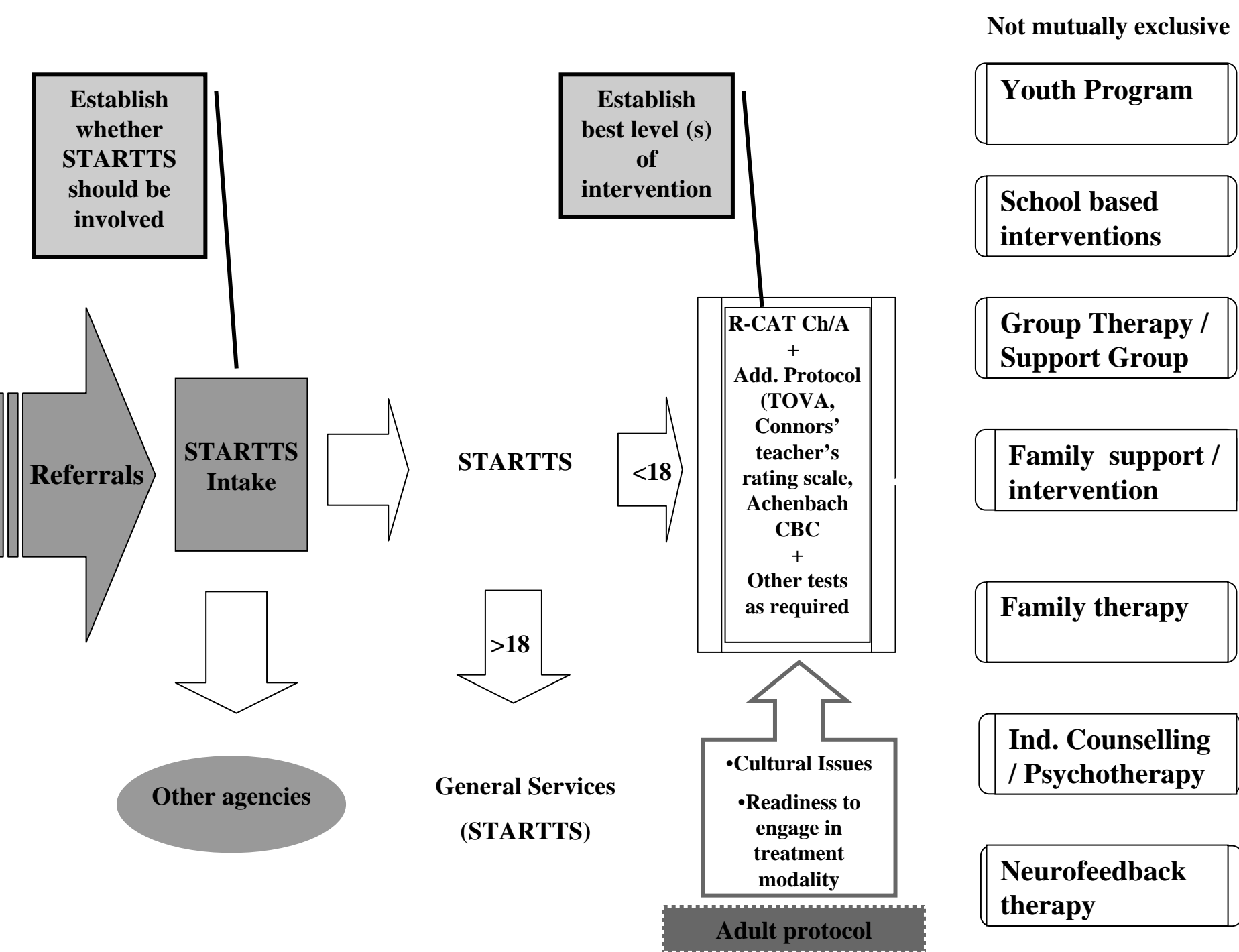


- Highly traumatized clients, multiple traumas and losses common *
- Very diverse client group & constantly changing
 - Many cultures & worldviews *
 - Many languages *
 - All ages *

Health Need

% from R-CAT Analysis

- Highly traumatized clients, multiple traumas and losses common *
- Very diverse client group & constantly changing
 - Many cultures & worldviews *
 - Many languages *
 - All ages *
- Complex problem presentations affecting biological, psychological and psychosocial realms



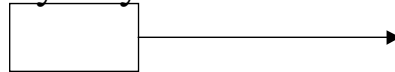
- Highly traumatized clients, multiple traumas and losses common *
- Very diverse client group & constantly changing
 - Many cultures & worldviews *
 - Many languages *
 - All ages *
- Complex problem presentations affecting biological, psychological and psychosocial realms
- Large numbers of clients, many possible intervention approaches and modalities, limited by ethno-cultural considerations and resources

STARTTS Service Provision Locations

Rural Locations

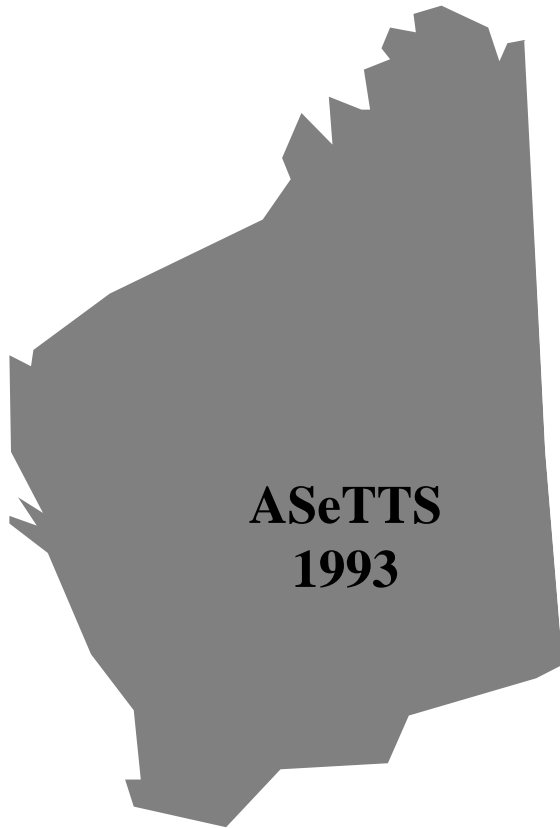
Mudgee

Sydney



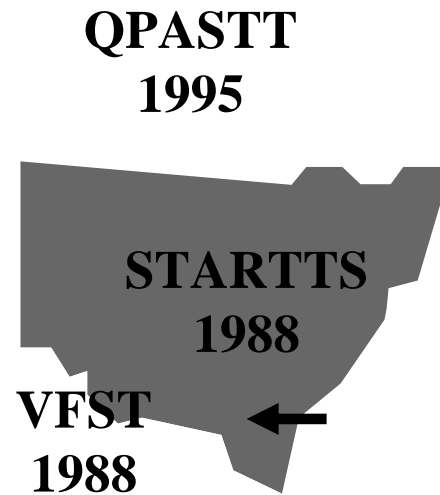
Sydney Locations

Statewide Services for Survivors of Torture and Trauma



TTSSNT
1996

STTARS
1991



Minister

SWSAHS

Responsibility For Financial and Admin Support

- Providing support in terms of:
 - Administrative Services
 - Financial Services
 - Employee Services
- Conducting Audits of STARTTS
- Assisting STARTTS Management Committee with evaluation process

Responsible For

- Administering STARTTS with accordance with memorandum of understanding
- Service Policy
- Monitoring STARTTS Operations
- Reviewing Financial performance

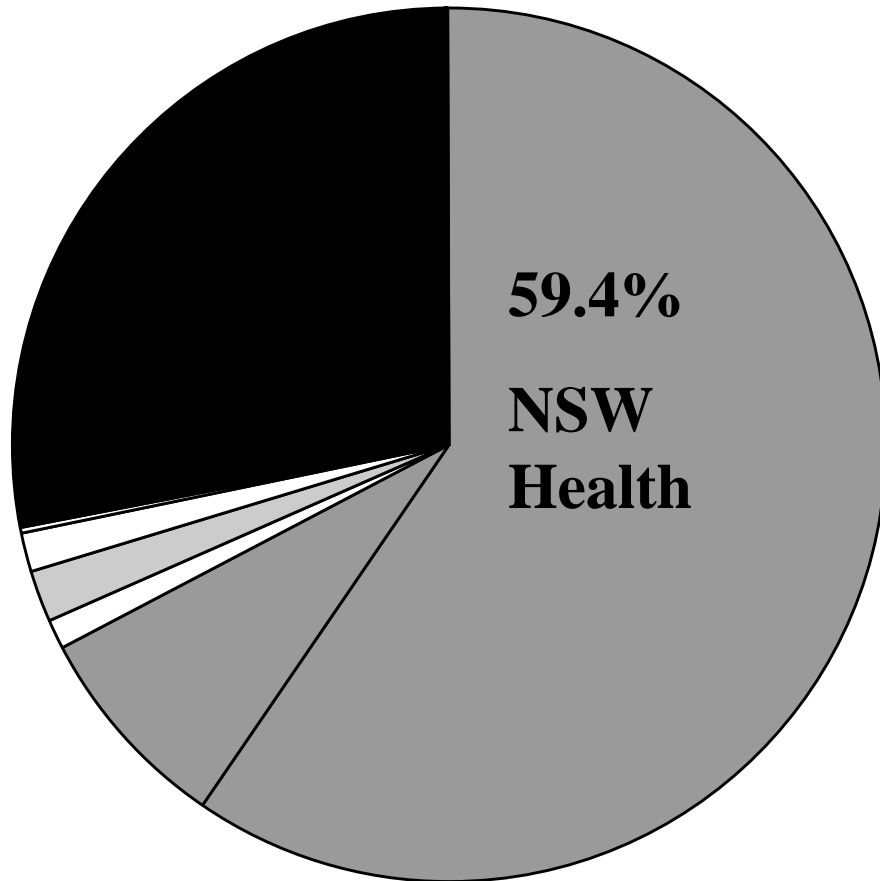
Friends of STARTTS (FOS)

- Fund raising for STARTTS project
- Assist STARTTS and its workers
- Enhance STARTTS profile
- Develop projects that benefit STARTTS client group

Executive Director

- Executive Officer of STARTTS: responsible to Mngt. Committee for overall policy, operations & comprehensive quality of service
- Reporting to Mngt. Committee
- Ensuring STARTTS activities comply with relevant policies
- Day to day Mngt. of all areas of the service
- Provide advice to STARTTS Mngt. Committee

Commonwealth = 39 %



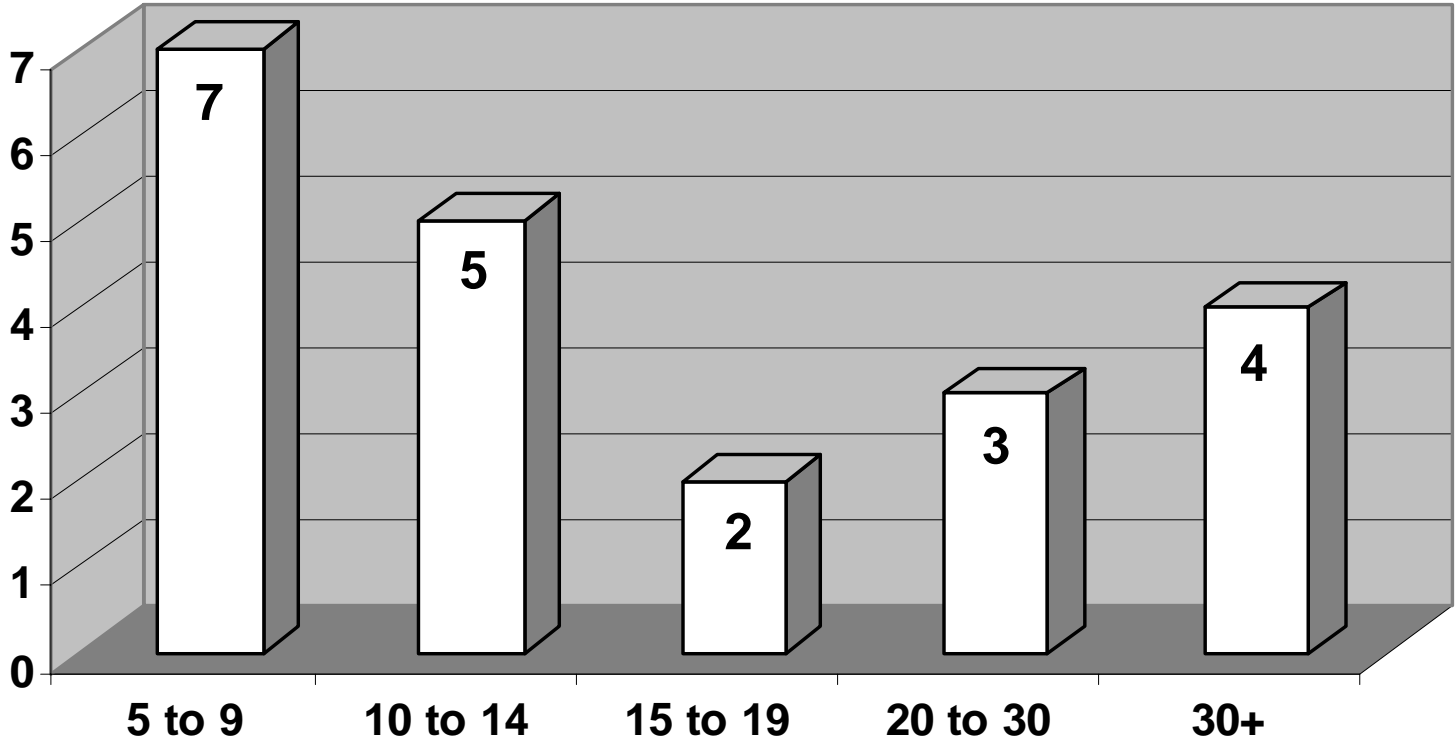
Private funding = 1.6 %

- NSW State Health Department)
- PASTT Program (Commonwealth DHAS)
- FICT program (Commonwealth DFACS)
- Personal Support Program (Commonwealth DFACS)
- FOS Volunteer Coordinator
- ACL Contribution to Transitions
- EIP Program

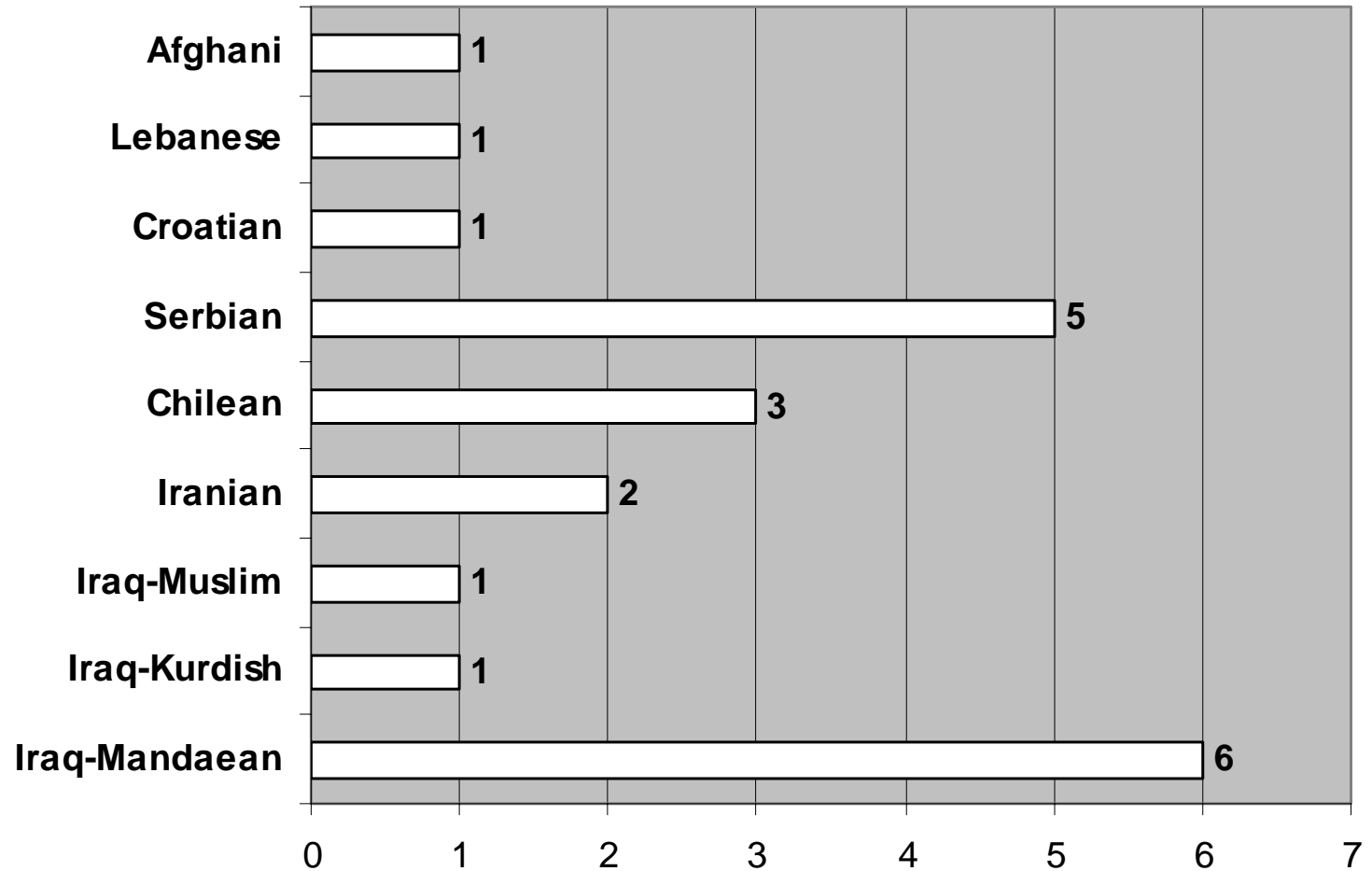
ne

n of

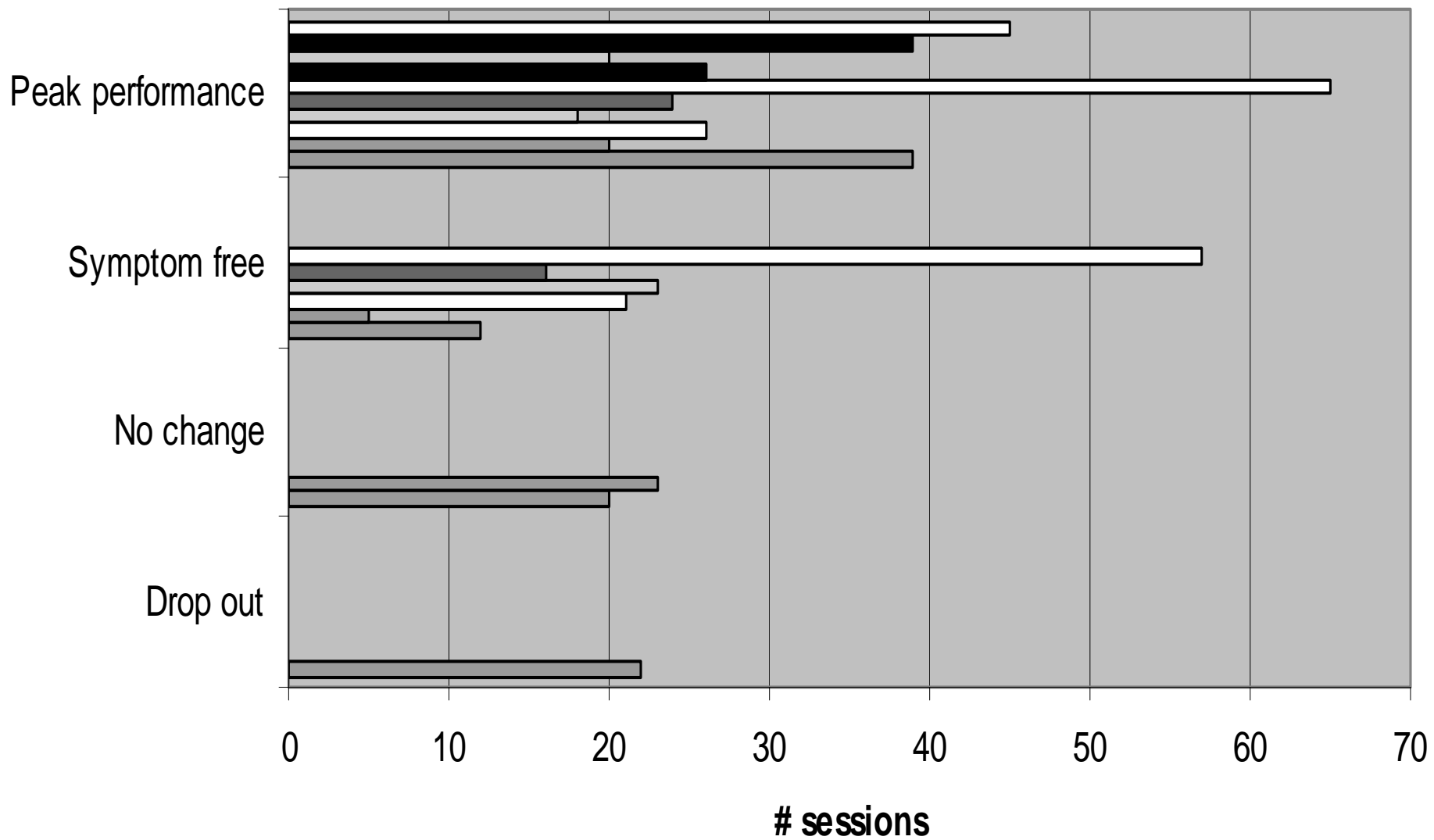
Age



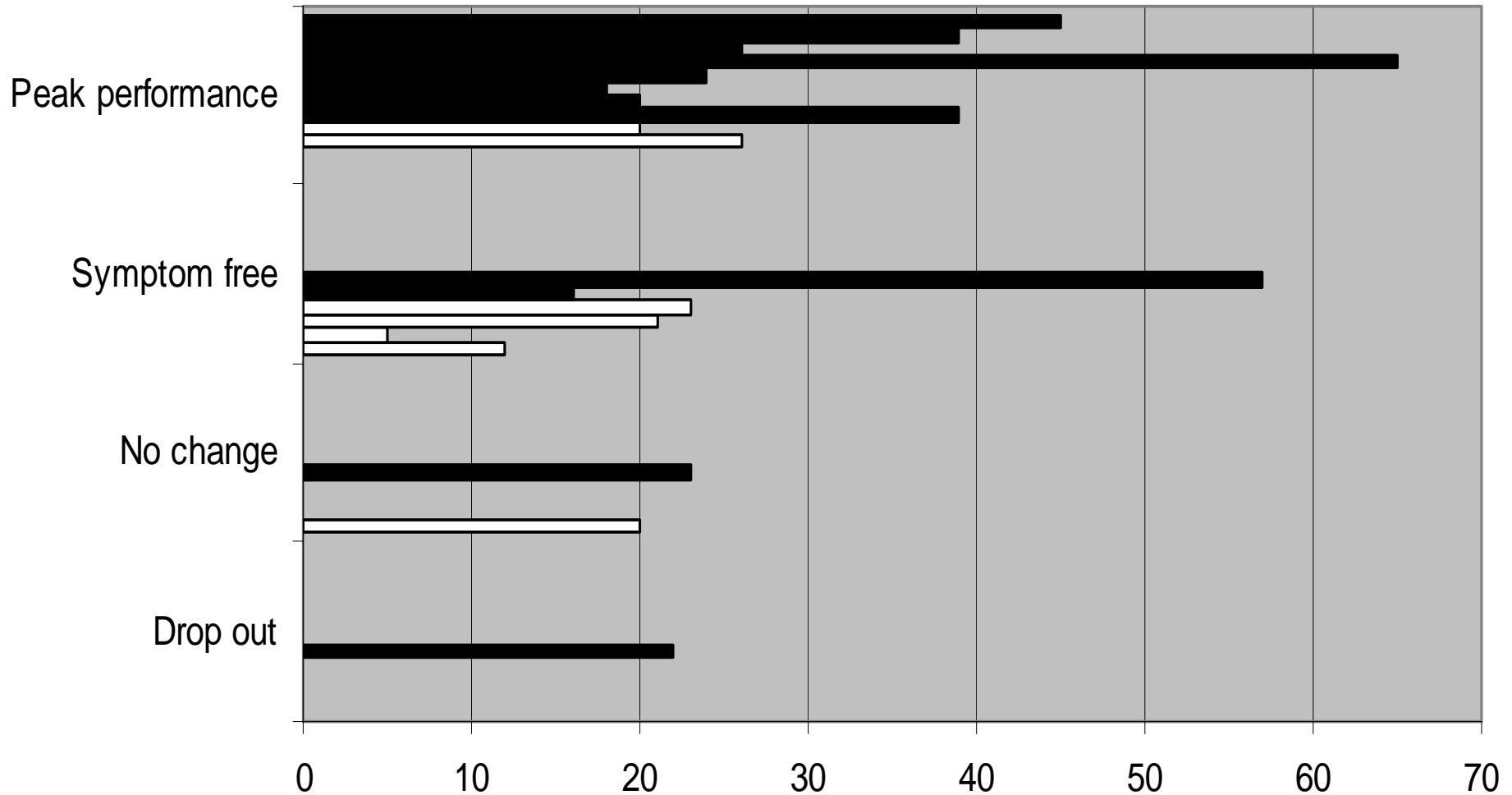
Nationality







Blue = Extensive previous treatment with marginal success (12).



www.startts.org

mirjana.askovic@sswahs.nsw.gov.au

gordana.hol@sswahs.nsw.gov.au

jorge.aroche@sswahs.nsw.gov.au

- Many clients
- Many cultures
- Constantly changing client group
- All ages

Type of Trauma experienced	Frequency	Percent
Torture	549	80.1
War	268	39.1
Witness to extreme violence	162	23.6
Imprisonment	78	11.4
Other	64	9.3
Concentration Camp	26	3.8
Rape	14	2.0

- Many clients
- Many cultures
- Constantly changing client group
- All ages
- Variable point of referral
- Severe and multiple traumas

- Many clients