

THE SENATE

PAPER No. 1457
DATE PRESENTED

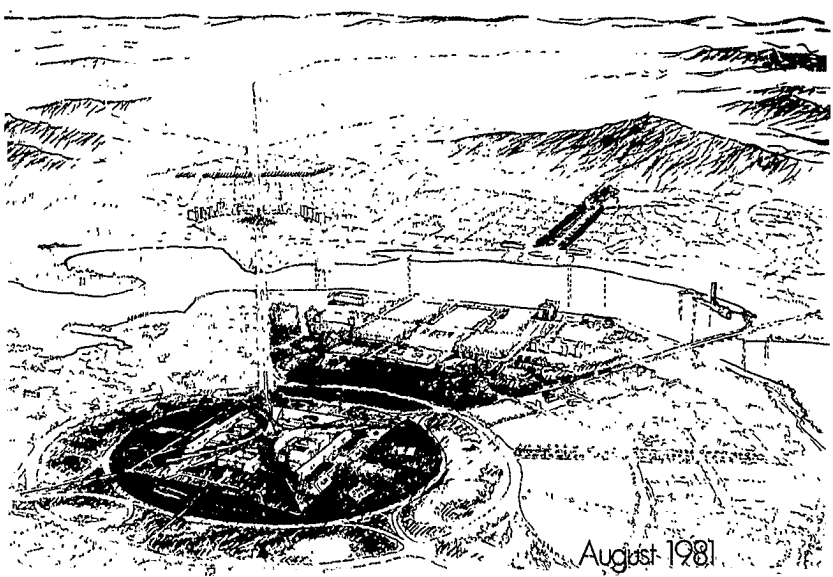
18 AUG 1981

Australia's New Parliament House

Parliament House
of the Senate

Sixth Report of the Joint Standing Committee

THE SENATE
18 AUG 1981
all
TABLED
PAPER



August 1981

1981

The Parliament of the Commonwealth of Australia

Joint Standing Committee on the
New Parliament House

Sixth Report

13 August 1981

Membership of the Committee

(32nd Parliament)

Joint Chairmen

Senator the Hon. Sir Condor Laucke, KCMG.,¹
President of the Senate
Rt Hon. Sir Billy Snedden, KCMG., QC., MP.,
Speaker of the House of Representatives

Members

Hon. W.M. Hodgman, M.P.
Minister for the Capital Territory

Senator M.A. Colston³

Senator G.J. Evans

Senator C.R. Maunsell²
Chairman of Committees in the Senate

Senator J.I. Melzer²

Senator A.J. Missen

Senator the Hon. J. O'Byrne²

Senator K.W. Sibraa³

Senator B.C. Teague³

Senator H.W. Young

Mr H.G.P. Chapman M.P.

Mr G.O'H. Giles M.P.

Hon. P.J. Keating M.P.

Mrs R.J. Kelly M.P.

Mr B. Lloyd M.P.

Mr G.G.D. Scholes M.P.

Secretary

Mr D.M. Piper

1 Senator the Hon. Sir Condor Laucke, KCMG, retired from the Senate on 30 June 1981. His place on the Committee as President of the Senate and Joint Chairman remains vacant until the election of a President.

2 Senators Maunsell, Melzer and O'Byrne retired from the Senate on 30 June 1981.

3 Senators Teague, Colston and Sibraa were appointed to the Committee in the places of Senators Maunsell, Melzer and O'Byrne with effect from 1 July 1981.

Committee Report

In its Fifth Report, presented to Parliament on 19 August 1980, the Joint Standing Committee reported on the architectural competition to select a designer for the new Parliament House and on the design submitted by the winning architect.

2. The Committee now reports to Parliament on the revised Design Brief issued to the architect and on the Schematic Design.

Design Brief

3. For Stage 2 of the architectural competition the five finalists were issued with a comprehensive brief describing Parliament's operation and its accommodation requirements. Following selection of the winning architect it was necessary to prepare and issue a final sketch plan brief supplemented by information obtained from a series of specialist studies on technical matters.

4. During late 1980 and early 1981 the Committee was involved with preparation of this final sketch plan brief and consideration of the various changes to the competition documents which had been identified by user groups since issue of the competition brief in 1979.

5. The requested changes fell into three categories:-

- (a) textual changes where statements of a descriptive nature required revision, clarification or expansion;

- (b) minor nett area changes where increases or reductions in area amounted to no more than 20m²; and
- (c) significant nett area changes where increases or reductions in area exceeded 20m².

6. In considering these proposed changes the Committee was concerned to ensure that the architect would be supplied with a document which accurately described Parliament's accommodation requirements in respect to area allocations and functional arrangements. At the same time the Committee regarded it as essential to maintain control over any growth in building size which might lead to an increase in the overall cost of the project.

7. The Committee also recognised that, whereas the competition brief had been written without a particular building design in mind, the final sketch plan brief was being prepared with the knowledge of the winning architect's competition entry. This allowed functional requirements to be reviewed against the known building layout and offered the opportunity to assess aspects such as movement, circulation and provision of services throughout the building.

8. Early in its consideration of the brief the Committee accepted the proposed textual and minor nett area changes. In respect to the proposed significant nett area changes the user groups were requested to provide more detailed justification and the Parliament House Construction Authority was asked to advise on design and cost implications.

9. After careful examination of this information the Committee agreed to a number of changes in the brief. These changes relate to general accommodation, refreshment services, security and savings. A schedule of the significant changes approved by the Committee is included as an appendix to this report.

10. The accommodation variations respond to organisational changes which have occurred since 1979, revised methods of operation or a reassessment of requirements.

11. Variations to the refreshments section of the brief resulted primarily from three factors:

- . reassessment of the numbers of people for whom service will be provided,
- . reassessment of the area allocations in dining areas, and
- . identification of the most effective method of operating refreshment services in the new building layout.

12. Design changes related to security result from recommendations by an interdepartmental committee and an examination of the way in which Parliament's security requirements would operate in the new building.

13. Your Committee believes that the agreed changes to the brief accurately reflect Parliament's requirements, are necessary for functional efficiency and involve only those area increases which are reasonable and justifiable.

14. Your Committee acknowledges that these changes will involve an increase in building cost of the order of \$5.9 million and recommends acceptance of the variations and associated costs.

Specialist Studies

15. Consultants have been commissioned by the Parliament House Construction Authority to study specialised aspects of the new Parliament House, to provide more detailed information, and to check the assumptions made in the competition documents. The

studies are designed to assist the architect in interpreting the approved user requirements.

16. A number of the studies are of a technical nature, describing good practice and performance standards. These studies do not impose any mandatory design requirements and do not affect area requirements or project budget. The studies in this category relate to:

- Acoustics
- Communications
- Electrical Services
- Energy and Mechanical Services
- Fire Protection
- Hydraulics Services
- Movement Systems
- Transportation
- Waste Control.

17. The remaining studies are of a broader nature, suggest options and make recommendations, some of which, if adopted, would have an impact on area requirements. Studies in this category relate to:

- Broadcasting
- Furniture, Fitout and Finishes
- Information Systems
- Refreshment Services
- Security
- Tourist Services.

18. All of the Specialist Studies have been considered by the Committee and have been submitted to the architect in conjunction with the brief. The recommendations in the Studies which affect area requirements and which have been adopted by the Committee are included in the variations to the brief. If, during development of the design, the architect identifies desirable features which, if adopted, would conflict with the approved brief, the Authority will bring the matter to the attention of the Committee for resolution.

19. The Committee is satisfied that the Specialist Studies will provide the architect and his consultants with important and useful information to supplement the requirements laid down in the brief.

Schematic Design

20. The Schematic Design submission represents a fundamental step in the process leading to the construction of the new Parliament House. While, throughout the project, it will be possible to refine and adjust architectural and functional elements of the building, the Schematic Design submission represents a resolution of the major formal, functional and economic issues involved in proceeding with design and construction of the project.

21. Both the Construction Authority and the Committee have subjected the Schematic Design to thorough examinations. The Authority has prepared a comprehensive report on the Design including a detailed description of the building and its various elements. The Committee will confine its comments to the way in which the design reflects user requirements.

22. Prior to the Committee's consideration of the Schematic Design, the material was examined by representatives of various user groups whose comments were noted by the Committee.

23. The Committee regarded it as essential that the Schematic Design meet two principal criteria. These are (a) provision of the accommodation areas as specified in the brief and (b) maintenance of a design which will allow Parliament to function efficiently.

24. For each element of the design the following aspects were considered:

- . Access for persons and goods
- . Interactions with other elements
- . Accommodation requirements
- . Internal relationships
- . Spatial amenity
- . Internal flexibility
- . Expansion.

25. After an examination of all the material submitted as part of the Schematic Design, and discussions with the Authority, user group representatives, the architect and consultants the Committee is satisfied that the criteria set out above have been achieved satisfactorily for all elements.

26. In the case of five components the Schematic Design makes an area provision less than that specified in the brief. These components are House of Representatives Whips, two committee rooms, one House of Representatives committee secretariat and the Media bureaux. After discussions with the architect and the Authority the Committee is satisfied that the required areas can be achieved during the design development process.

27. Your Committee believes that Parliament's accommodation requirements, including spatial amenity and expansion, are well handled in the Schematic Design.

28. There has been a number of design changes since Parliament approved the winning competition entry in August 1980. The changes have been carried out in consultation with the users and are a result of planning, circulation and distribution requirements. This refining of the design has not altered the original concept which remains intact.

29. The major changes from the competition entry which affect user areas involve relocation of the Hansard and recreation elements, closer integration of the Executive element, reorganisation of the Committee rooms, rationalization of the basement area and relocation of underground parking areas and the unloading dock.

30. There are two architectural changes which do not affect user areas. In order to reduce the amount of excavation required the level of the building has been raised by two metres whilst retaining the overall height of the building by lowering the upper floor levels. The other significant change involves elimination of the glass curtain walls which were originally placed alongside the two curved walls.

31. The Committee has examined these changes from the competition design and has concluded that they do not detract from the original concept. Relatively few changes have occurred in the configuration of the building and, even though further evolution will take place in the design development stage, the complex appears now in substantially the form in which it will be built.

32. Your Committee believes that the Schematic Design in its present form is an excellent base on which to proceed with design development. Your Committee strongly supports the Schematic Design.

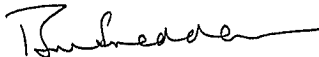
Costs

33. In August 1980 the estimated cost of the winner's design concept was \$220 million at May 1978 prices. Your Committee has noted that the cost adjusted to June 1981 prices is \$296 million and that this remains the budget of the Construction Authority.

34. It is recognised that amendments to the brief approved by the Committee and the Government would involve \$5.9 million at May 1978 prices (\$7.9 million at June 1981 prices) or an increase of approximately 2.7% in the building budget. As stated previously the Committee believes that these changes are justified and has instructed the Authority to include them in the brief.

Recommendation

35. Your Committee recommends that Parliament accepts the Schematic Design for the new Parliament and gives the necessary authority to proceed with construction under the terms of the Parliament House Construction Authority Act 1979.



(B.M. Snedden)
Speaker of the House
of Representatives
Chairman

13 August 1981

APPENDIX

DESIGN BRIEF - CHANGES APPROVED BY JOINT STANDING COMMITTEE

DESIGN CHANGE	SOURCE	DESCRIPTION	AREA CHANGE M ²
<u>Accommodation</u>			
Special services facility	Specialist Consultant and Parliamentary Departments	Central facility for computerised control of all building services systems	+ 70
Communication facilities	Telecom	Rationalised space and location of communication requirements for central telephone exchange and main switch board	- 120
Sound and TV services	Specialist Consultant	Rationalised sound and TV services in an enlarged technical operation centre	+ 50
Staff facilities and sanitary accommodation	Telecom	Provision of lunch rooms and rest rooms reduced slightly through rationalisation of telecommunications/communications facilities	- 25
Senators Suites	Senate Department	Provide three Senators suites	+ 258
Visitors Information Counter	Tourist Consultant and Parliamentary Departments	Senate and House of Representatives Information and Ticket offices combined and relocated in general entrance foyer	- 31
Post Office	Australia Post	Enlarged work room to meet Australia Post requirements including public space and sorting facilities	+ 71
Committee rooms Hansard Recording Rooms	Hansard Department	19 recording rooms each enlarged by 2 m ² to accommodate projectionists or 4th Hansard recorder	+ 38

DESIGN CHANGE	SOURCE	DESCRIPTION	AREA CHANGE M ²
Library Administration	Parliamentary Library	Library computer centre deleted and facilities incorporated in central computer centre providing facilities for all Parliamentary Departments	- 40
Senior staff offices	Hansard Department	Additional supervisors offices and three additional senior reporters offices to accommodate organisational changes	+ 102
Reporters rooms	Hansard Department	One Reporters room deleted as a result of organisational change	- 27
Senate Chamber	Senate Department	Provide sufficient seating on the floor of the Chamber and in Galleries for formal opening of Parliament	
<u>Refreshment Services</u>	Refreshment Consultant/ Joint House Department		
Public Cafeteria-Kitchen and dining areas		Increased allocation for individual seating for 200 tourists	+ 171
Reception Hall - patron area, kitchen, bar		Minor increases in area allocation	+ 11
Main kitchen		Provide increased circulation area around major kitchen items	+ 55
Goods reception		Minor increase in area to assist goods unloading	+ 30
Main stores		Provide additional storage facilities and goods break down area	+ 154
Members and Guests Dining Facilities		Increased area per person and additional servery area	+ 350
Staff Facilities - Kitchen/Dining areas		Increased allocation per person for 332 staff	+ 131
Committee Rooms - Servery/Kitchen		Additional area in the servery and kitchen to provide service to Committee rooms	+ 98

DESIGN CHANGE	SOURCE	DESCRIPTION	AREA CHANGE M ²
Public Cafeteria - Kitchen/Dining areas		Additional area and facilities to accommodate an increase in seating capacity from 200 to 300 tourists	+ 122
Staff facilities - Kitchen and dining areas		Additional area and facilities to accommodate an increase in seating capacity from 332 to 400 staff	+ 64
Room Service - Satellite Servery/Kitchen		Requirement to provide light meals to Senators and Members Suites	+ 100
Members/Senators Suites	House of Representatives and Senate Departments	Provision of hot/cold drink making and dishwashing facilities	
<u>Security</u>			
Entry Lobby	Security IDC	Lobby enlarged to accommodate security checking and screening equipment to meet increased number of visitors and more extensive security search	+ 140
Internal guard posts	Security IDC	The number of internal guard posts reduced and replaced by security control points	- 80
Security control points	Security IDC	Control points incorporating control, waiting and escort rooms located at all building entries (except main entry) and Executive Government entries	+ 320
Communications and emergency management facilities	Security IDC	Areas to be fitted out in the future for communications and other facilities for the management of national emergencies	+1950
Unloading dock	Security IDC	Unloading dock relocated outside the basement area for security reasons	
Centralised distribution area	Parliamentary Departments	Area required to receive and sort goods within the basement area when transmitted through Unloading Dock	+ 130
Priority parking	Security IDC	Senators/Members underground priority parking moved from under the building to improve security and safety	

DESIGN CHANGE	SOURCE	DESCRIPTION	AREA CHANGE M ²
<u>Savings</u>			
Raise building	Competition Assessors	Building raised by a mean of 2m to reduce the extent and cost of excavation (amount of saving is dependant upon quantity of hard rock found on site)	
Civil Defence Shelter	Joint Standing Committee	Civil Defence Shelter removed.	- 400