

## **Appendix C - Associated drawings**

	<b>MAP</b>
Attachment 2: Location Map	1
Attachment 3: Site Plan	2
Attachment 4: Re-Development Plan	3
Attachment 5: General Design Requirements	4
Attachment 6: Indicative 'Typical' Dwelling Plan	5

**NOTE: Associated drawings may be obtained through the Committee Secretariat.**









- Free-standing letter box (average quality)
- Rotary clothes line

### Landscaping

- Base landscaping, protection and trimming of existing trees

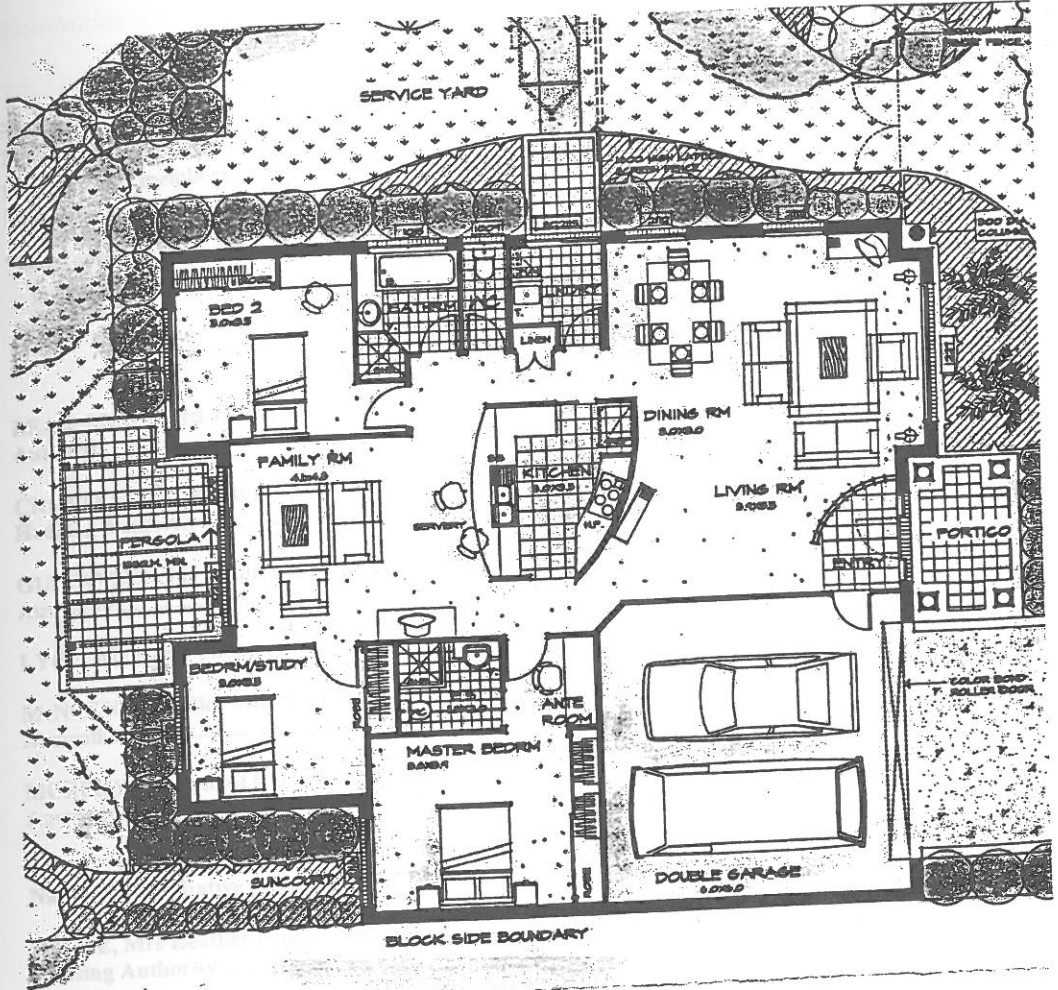
### Contextural Elements<sup>4</sup>

- Terra cotta roof tiling
- Awning windows and sliding door units with traditional transoms ('semi-colonial' style)
- 'Heritage' style architraves and skirtings
- 'Heritage' style fibrous plaster cornices
- 'Heritage' style fibrous plaster rose to lounges
- Exposed aggregate finish to concrete paving to front entry porches and pergola areas
- 6 - 8 mm render with paint finish (applicable to selected houses only)
- Stamped finish to concrete driveways
- Exposed aggregate finish to concrete paths and paving
- Stained finish to fencing and gates
- Brick piers and base to selected fence areas (feature boundary fencing to primary street elevations)
- 'Heritage' style letter boxes
- Upgraded landscaping (e.g. garden beds, limited irrigation, limited mature planting, etc.)
- 'Heritage' style street lighting
- 'Heritage' style bollards to laneway

---

<sup>4</sup> elements which are introduced to create a development which is sympathetic to, and reflective of, the context of the existing facilities to which it will contribute

Attachment 6: Indicative 'Typical' Dwelling Plan



Indicative 'Typical' Dwelling Perspective

