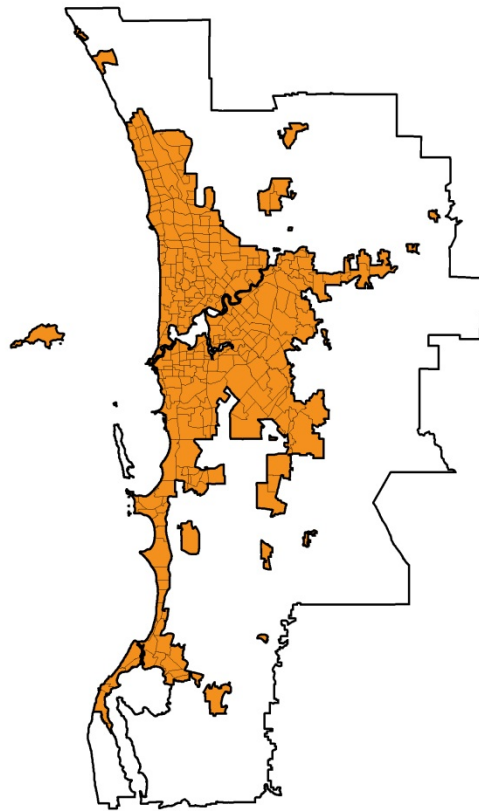


May 2013



Who lives where: Perth

Productive Cities: Supplementary Maps

Jane-Frances Kelly and Peter Mares

Who lives where: Perth

Grattan Institute Support

Founding members



Australian Government



Program support

Higher Education Program



Affiliate Partners

National Australia Bank

Senior Affiliates

Wesfarmers

Stockland

GE Australia and New Zealand

Google

Affiliates

Arup

Urbis

The Scanlon Foundation

Lend Lease

Origin Foundation

Sinclair Knight Merz

Ernst & Young

Grattan Institute Report No. 2013-9, May 2013

This publication was prepared by Grattan Institute Cities Program Director Jane-Frances Kelly and Cities Fellow Peter Mares. Cameron Harrison, Michael O'Toole, and Matthew Oberklaid provided extensive research assistance and made substantial contributions to the report.

We would like to thank the members of Grattan Institute's Cities Reference Group for their helpful comments, as well as numerous industry participants and officials for their input. We acknowledge the assistance of SGS Economics and Planning in producing the access to jobs maps.

The opinions in this report are those of the authors and do not necessarily represent the views of Grattan Institute's founding members, affiliates, individual board members or reference group members. Any remaining errors or omissions are the responsibility of the authors.

Grattan Institute is an independent think-tank focused on Australian public policy. Our work is independent, practical and rigorous. We aim to improve policy outcomes by engaging with both decision-makers and the community.

For further information on the Institute's programs, or to join our mailing list, please go to: <http://www.grattan.edu.au/>

Kelly, J-F., Mares, P., Harrison, C., O'Toole, M., Oberklaid, M., 2013, Who lives where: Perth, Grattan Institute

ISBN: 978-1-925015-36-2

All material published or otherwise created by Grattan Institute is licensed under a Creative Commons Attribution-NonCommercial-ShareAlike 3.0 Unported License

Table of contents

1. Introduction	3
2. Income	6
3. Education	10
4. Employment	20
5. References	29

1. Introduction

1.1 Introduction

Maps enable us to visualise data in new ways. Columns of numbers can be converted into a visual image that provides a more complex understanding of a familiar geography.

The maps contained in this booklet were developed as part of the underlying evidence base for the Grattan Institute report *Productive cities*¹ and are organised under three themes – Income, Education (level of qualifications) and Employment (participation in the labour market and access to jobs). There are separate map collections for Sydney, Melbourne, Perth and Brisbane.

These maps illustrate who lives where in Australia's largest cities and track how this has been changing over time. They draw on data from five censuses over twenty years – from 1991 to 2011.

One of the questions that this mapping exercise seeks to answer is whether or not Australian cities are becoming more geographically polarised – that is, whether residents of our cities are increasingly segregated by income and education levels.

In Australia, a western liberal democracy with a competitive, market-based economy, it is widely accepted that not everyone will be equal – with the same size pay packet, bank balance or house. Inequality can be seen as one way in which the market rewards performance and effort and provides an incentive to work

harder or improve skills – even if that is only one motivating factor among many.²

Nor is it physically possible for every city resident to live equidistant from the things that matter for daily life such as workplaces, educational institutions, public transport or shops.

Yet if the distribution of outcomes and opportunities is too uneven, this can have profound implications. If the structure of the city severely restricts access to jobs or education then it can hold back productivity and constrain the ability of individual residents to improve their lives. If disadvantage or wealth is overly concentrated in particular areas, this could weaken social cohesion.

The overall picture that emerges from these maps is that the residents of Australia's four biggest cities have enjoyed rising incomes and have become much better qualified over the past two decades. Yet at the same time, Australian cities have become more polarised. Increasingly, high-income residents with university level qualifications cluster in suburbs close to city centres, while residents on lower incomes, and residents with vocational qualifications, are more likely to live around the city fringes.³ In each city, it is also possible to identify particular areas of disadvantage, where a high proportion of residents have no

² Dadush, *et al.* (2012) p. 1

³ The trends identified in these maps are also linked to changing house prices, with property values rising more rapidly in inner than outer suburbs. Since the census does not contain house price data it was not possible to map the changing distribution of residential property values, however the issue is discussed in greater detail in our report.

¹ Kelly, *et al.* (2013)

Who lives where: Perth

formal qualifications beyond secondary school, where labour market participation is low and where a high proportion of young people are 'disconnected' – that is, neither working, nor engaged in education or training.

1.2 Reading the maps

For each city, we have restricted our maps to the relevant Urban Centre Zone as defined by the Australian Bureau of Statistics. This captures the built-up areas in which residents lived in the relevant Census year and avoids diluting the maps' visual impact with large but sparsely populated districts that fall within the broader Greater Capital City Statistical Areas (GCCSA). For context, we have included the GCCSA boundary to show the overall shape of metropolitan area – see Figure 1.

The larger, boxed view on each map magnifies as much of each city as possible to provide more clarity and detail (though inevitably excluding some outlying suburbs). Maps using 2011 census data are presented on a full page, but earlier maps are four to a page.

Maps from 2011 and 2006 show census data at a State Suburb (SSC) level – an area small enough for maps to be sufficiently detailed, yet large enough to generate meaningful statistics. Suburbs are also familiar to us as residents.

Census data was not available at a suburb level prior to 2006 in all states. To provide consistency between cities, maps from 2001 and 1996 use data at the level of Statistical Local Area (SLA). To ensure consistency over time, maps that track change between 1996 and 2011 also use data at SLA level.

Limitations on the original data and the lack of a consistent unit of spatial analysis made it impossible to map change back to 1991. Maps from 1991 use a larger area of analysis – the Statistical Subdivision (SSD), defined by the ABS as “socially and economically homogeneous regions characterised by identifiable links between the inhabitants”.⁴

Despite unavoidable differences in the unit of spatial measurement for different census, comparing maps from 1991 to 2011 still provides an overall picture of change over time, with the most recent maps providing the highest level of detail.

We have excluded areas where the relevant population was too small for meaningful analysis.⁵

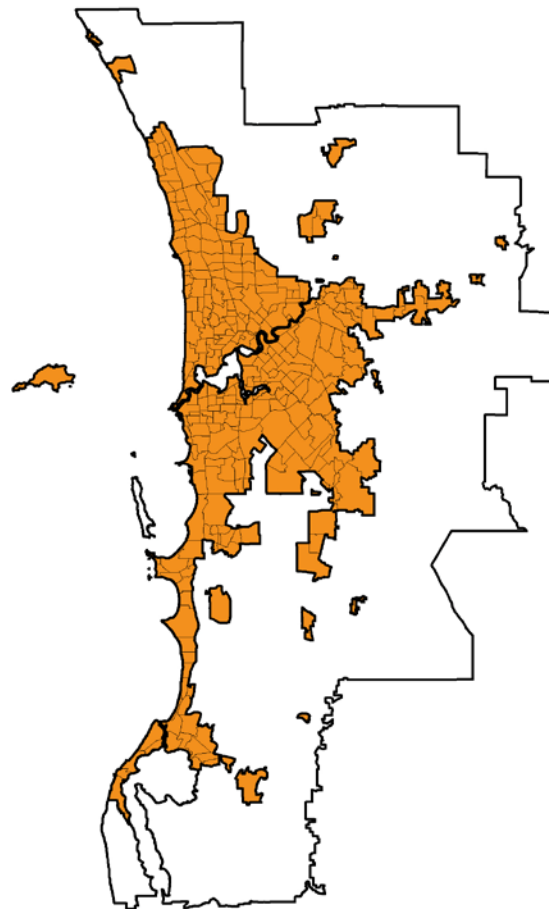
In general we have restricted our analysis to residents in the prime working ages of 25-65.⁶ This helps avoid capturing people who are completing education or training, who may be still living with parents as they enter the workforce, or who have retired from the workforce.

⁴ For more detail on ABS geographical classifications see: Pink (2011a) and Pink (2011b)

⁵ Generally this was fewer than 50 people in the relevant sample.

⁶ The exceptions are the job access and youth disconnection maps. Youth disconnection is specific to the age range 17-25 and age range is not relevant to the job access maps.

Figure 1: Context Map showing urban footprint and Greater Capital City Statistical Area boundary for Perth 2011



2. Income

Income maps are based on census data, counting people by their place of usual residence, but restricted to people between 25 and 65 years of age. Using this age group ensures a focus on that segment of the population more likely to be available for employment, and excludes most people who are still engaged in post-school education and most retirees. The selection of this cohort is also made in the knowledge that 75 per cent of the growth in real household income over the past twenty years has come from increased earnings in the labour force.⁷

Income is based on the total personal income (INCP) field in the relevant census year.⁸ The census asks individuals to report their usual total pre-tax income by selecting an option from a number of possible ranges (e.g. \$200-\$299, \$300-\$399). This limits the type of analysis that can be undertaken using this data (for example it is not possible to calculate average incomes). To estimate the median income (in 2011 dollars) we first adjust the census data for inflation and then assume that individuals' incomes are distributed evenly within each income range reported by the ABS.

Median income by area (Figures 2 & 3)

We calculated the median income for each area using State Suburb level (SSC) data for 2011 and 1996, Statistical Local Area

(SLA) for 2001 and 1996 and Statistical Subdivision (SSD) for 1991). Maps were then colour-coded to show the median annual income range for each area from more than \$70,000 to less than \$30,000 – the darker the colour of an area, the higher the median income of its residents. See Figure 2 and Figure 3

The maps reveal evidence of polarisation, with individuals on higher incomes clustered in inner suburbs and in suburbs with desirable natural attributes (such as beaches). In Perth, the highest median incomes are found in inner and beachside suburbs while the lowest median incomes are found in suburbs to the south, east and northeast that are more distant from the CBD.

Average annual growth in median income (Figure 4)

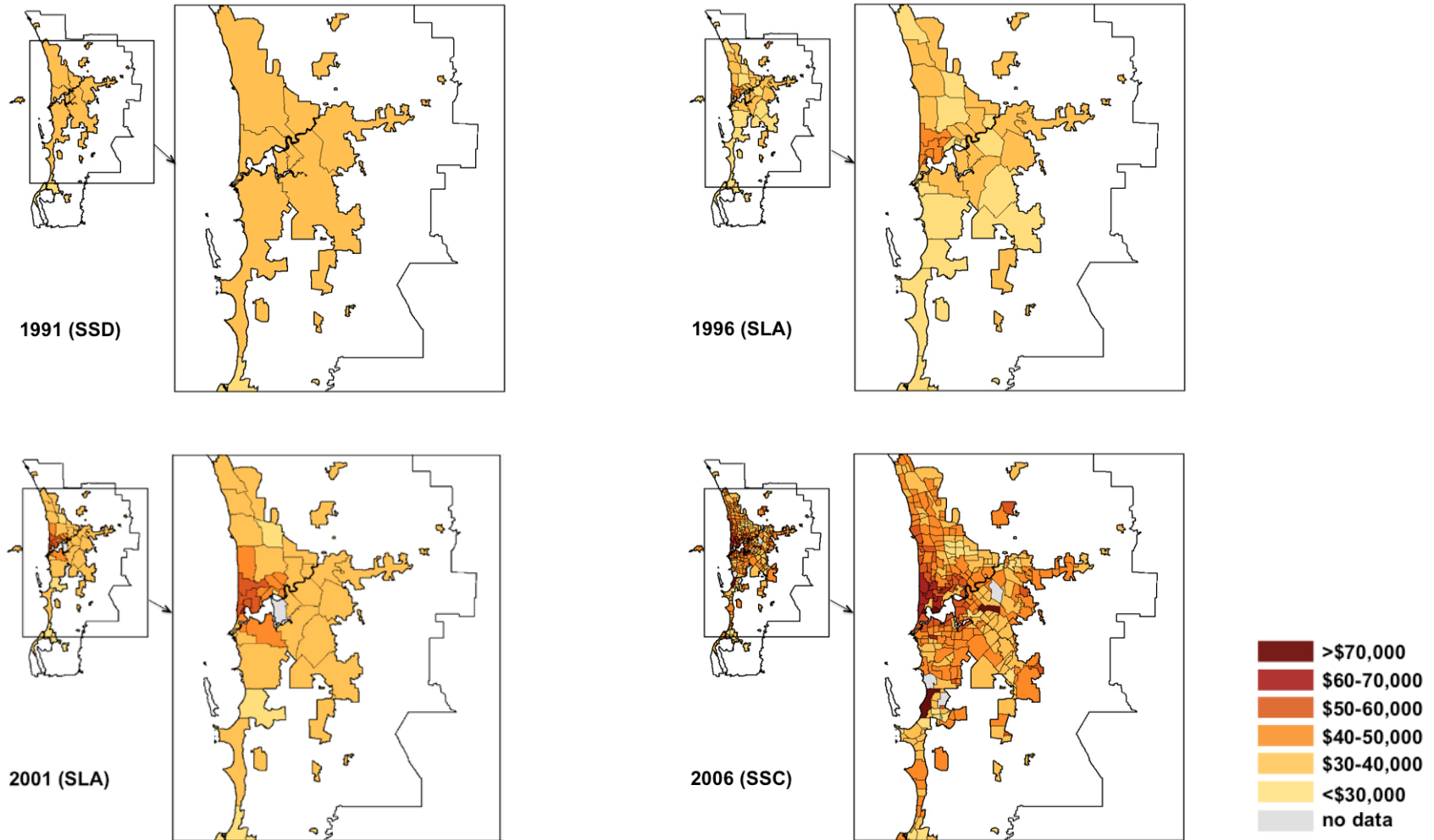
In order to track change over time and to see if it reveals any spatial patterns, a second map shows the average annual growth in median income by SLA between 1996 and 2011. As can be seen in Figure 4, average annual growth in the median income has been above 2 per cent throughout the entire metropolitan region. The suburbs that have recorded the strongest growth (above 3 per cent) are located in suburbs near the city centre and in the far south of the city. These changes reflect shifts in individual earnings as well as demographic changes.

⁷ Greenville, *et al.* (2013) p. 5

⁸ INCP measures total personal income on a weekly basis; we have annualised by multiplying by 52. We have used pre-tax income, and have not considered non-financial benefits, such as the flow of housing services generated from home ownership

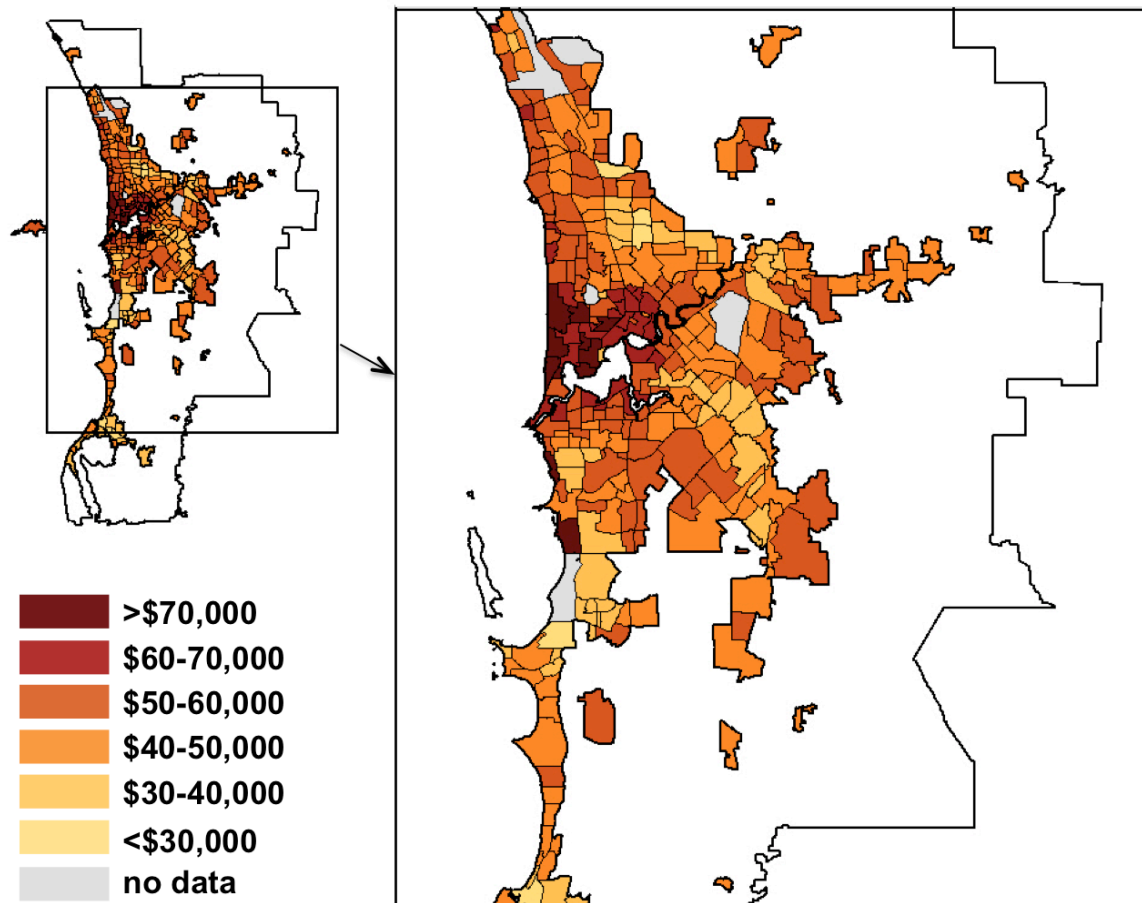
Who lives where: Perth

Figure 2: Median income (residents aged 25-65) Perth, 1991-2006



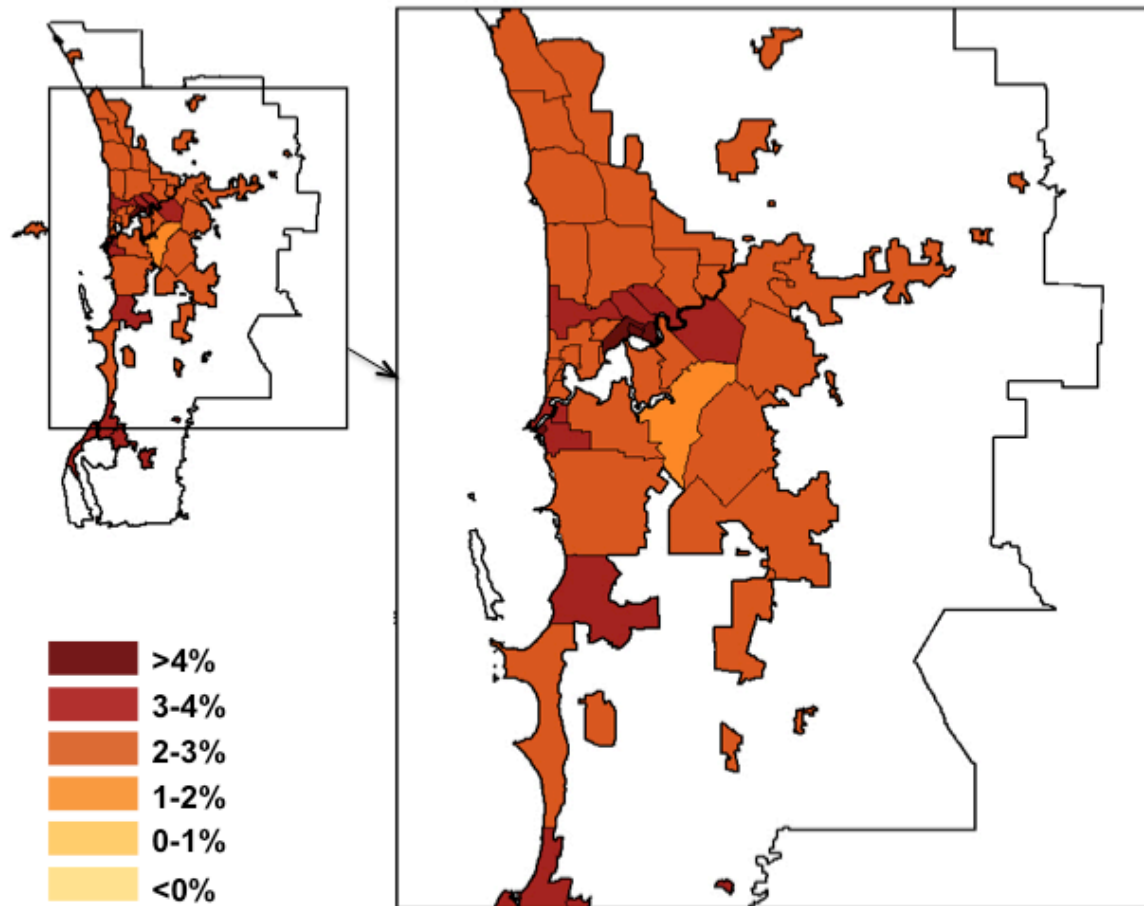
Who lives where: Perth

Figure 3: Median income (residents aged 25-65), Perth, 2011 (SSC)



Who lives where: Perth

Figure 4: Average annual growth in median income (residents aged 25-65), Perth 1996-2011 (SLA)



3. Education

We have mapped three categories of educational achievement by the highest qualification level attained by people aged 25-65: bachelor degrees or higher from recognised universities (i.e. AQF level 7 and above); vocational qualifications such as diplomas or certificates (i.e. AQF levels 6 and below, usually from TAFEs or private training providers), and no post-school qualifications.

Qualification levels are determined using census data counting people by their place of usual residence. We have used the Post-School Qualification (QALLP) field at the 2-digit level, which provides sufficient detail for us to classify people into the three categories.

For each category, we have calculated the percentage of people in each area whose highest qualification is at that level. We have then colour-coded each suburb according to its percentage, with darker colours indicating that a suburb has a high proportion of people with that level of education.

University qualifications (Figures 5-7)

The first set of maps (Figure 5 and Figure 6) shows changing levels of university attainment over the last twenty years. Two clear patterns emerge. Firstly, the maps show that the overall proportion of residents with a university qualification increased significantly between 1991 and 2011, with darker areas on the map spreading to cover a larger part of the city. Secondly, the maps show that people with university qualifications are concentrated in inner urban areas. The data is further analysed in

a graph that shows the relative proportions in levels of university qualification by distance from the CBD for 1996 and 2011 (Figure 7). While the city is, on average, much better qualified than twenty years ago, there is a persistent and large gap between the share of residents between inner and outer suburbs of Perth.

Vocational qualifications (Figures 8-10)

The second set of maps (Figure 8 and Figure 9) is almost the inverse of the first. It shows the distribution of vocational qualifications. The maps become darker over time showing the increase in proportions of people with certificates, diplomas and other non-university qualifications. However the distribution is highly skewed towards outer urban areas, which have also seen more growth in vocational qualifications over time (see Figure 10).

No post-school qualifications (Figures 11-13)

The final set of maps (Figure 11 and Figure 12) shows the proportion of the population with no formal qualifications beyond high school. Increasing education levels are evident in the decrease of dark colours over time. While change has occurred in all areas, there is still a significant difference between inner and outer suburbs (Figure 13). There are notable clusters of low-qualified suburbs in Perth's south, east and northeast and there is some overlap between these areas and areas with low workforce participation rates and high levels of 'disconnected youth' (that is neither employed nor in education or training – see next section, Figure 18).

Who lives where: Perth

Figure 5: Percentage of residents (aged 25-65) with a university degree, Perth, 1991-2006

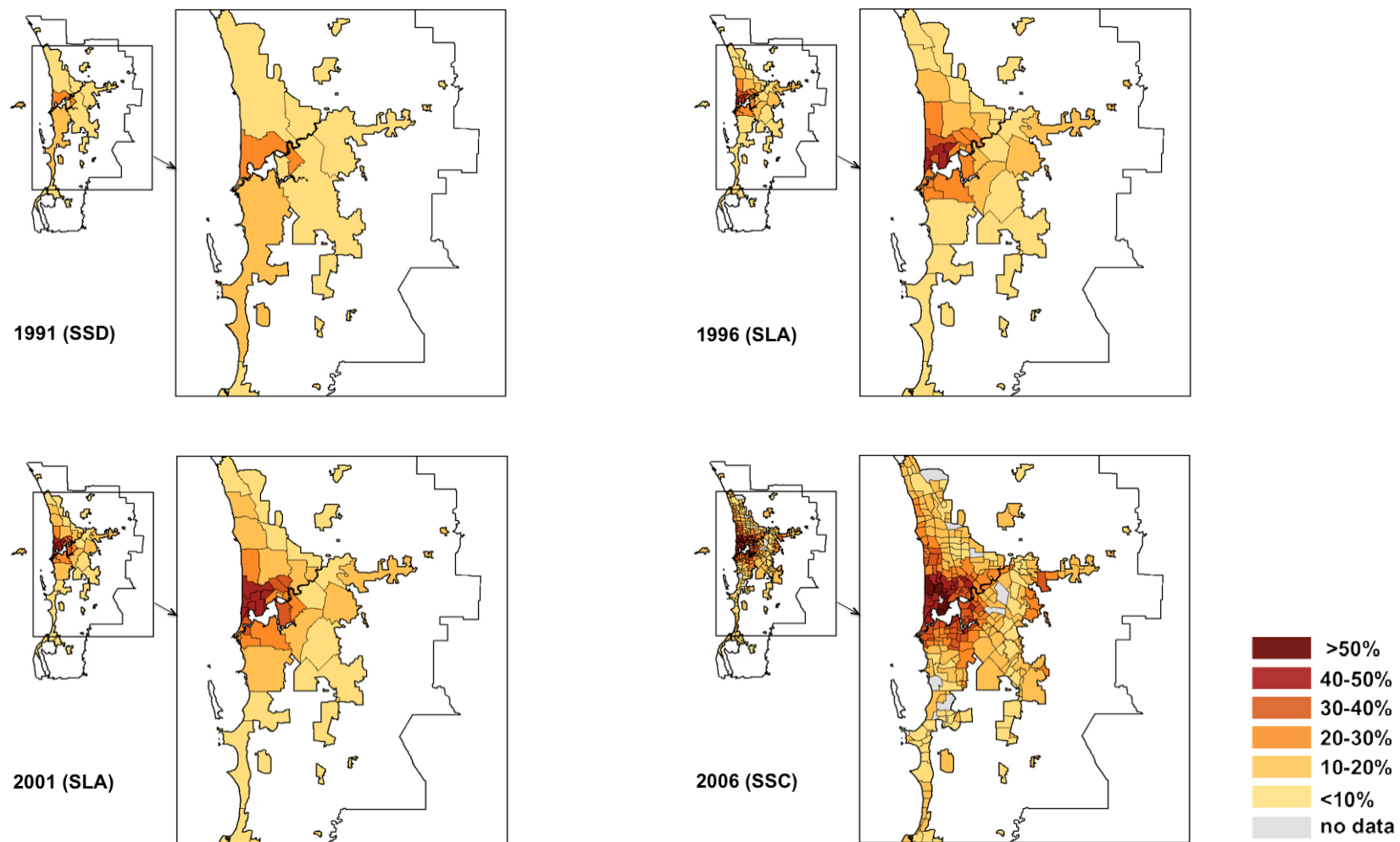
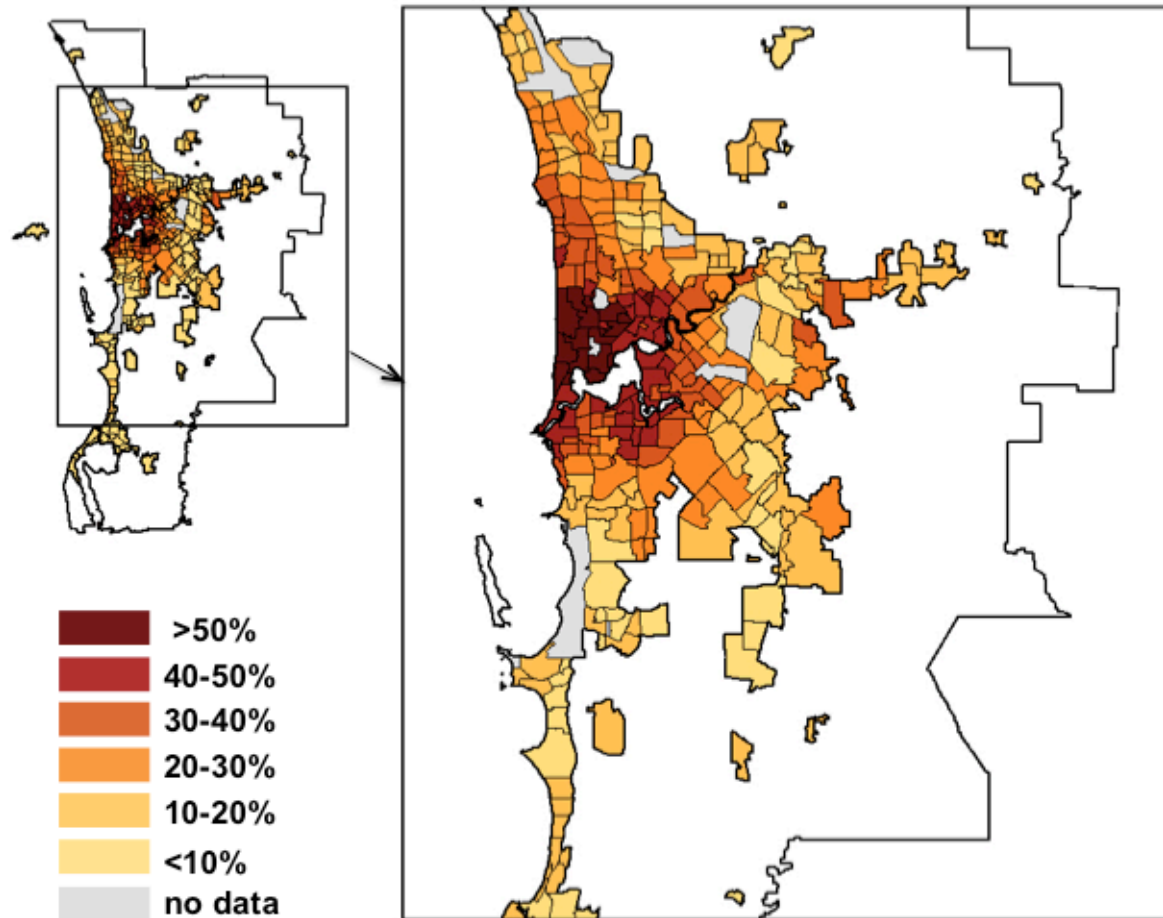
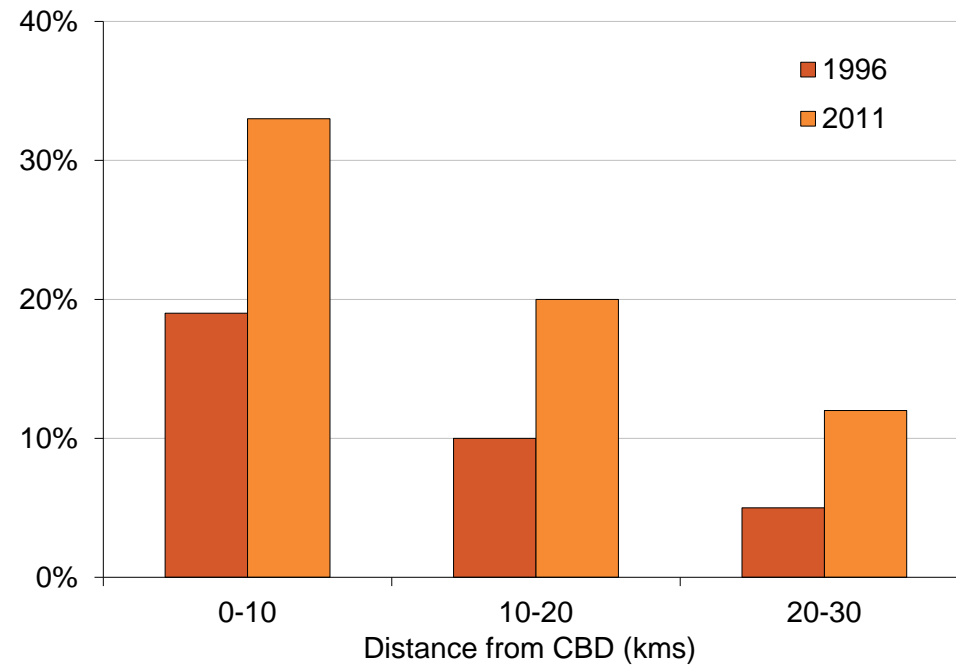


Figure 6: Percentage of residents (age 25-65) with a university degree, Perth, 2011



Who lives where: Perth

Figure 7: Percentage of residents with university qualifications by distance from the CBD, Perth, 1996 and 2011



Who lives where: Perth

Figure 8: Percentage of residents (aged 25-65) with vocational qualifications, Perth, 1991-2006

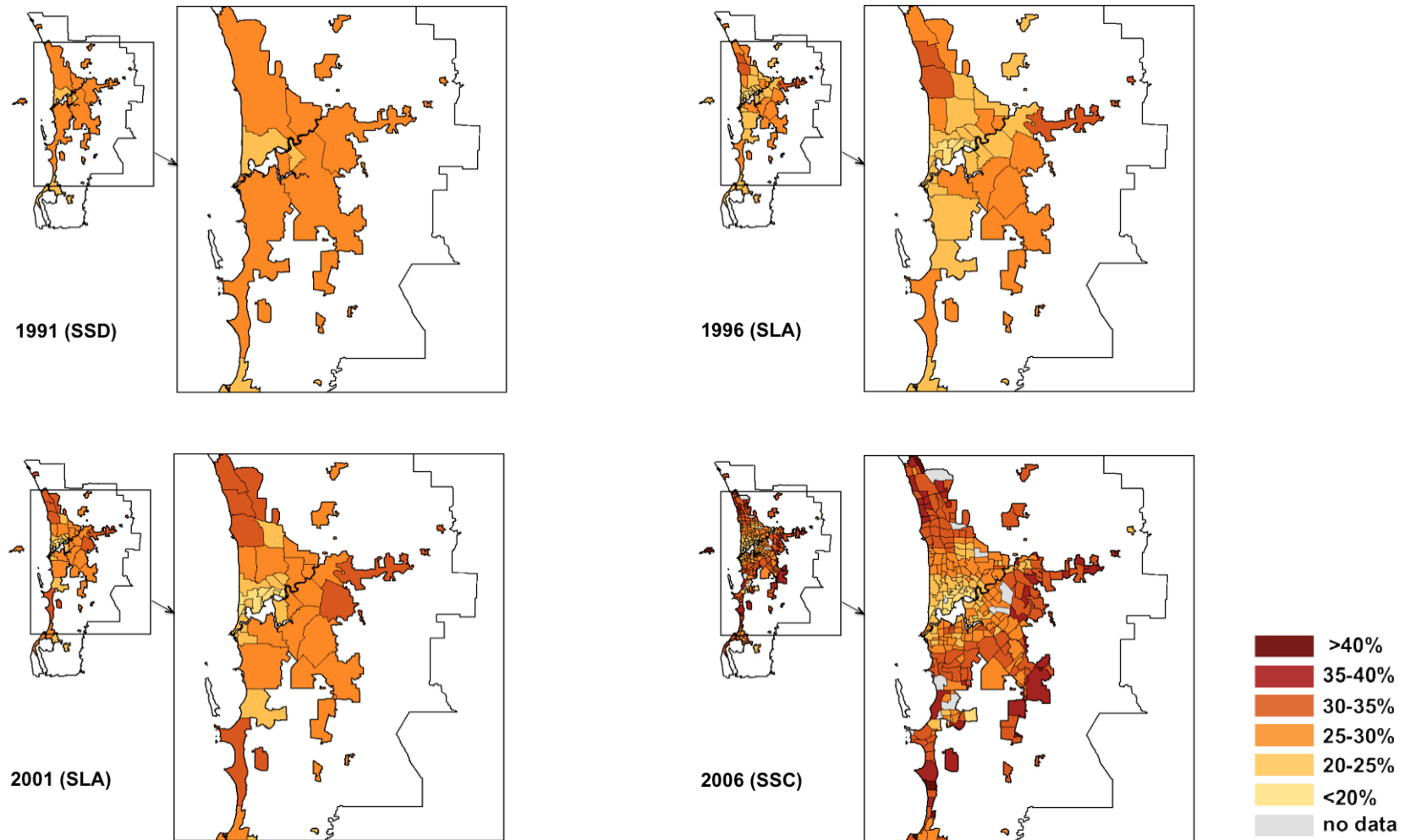
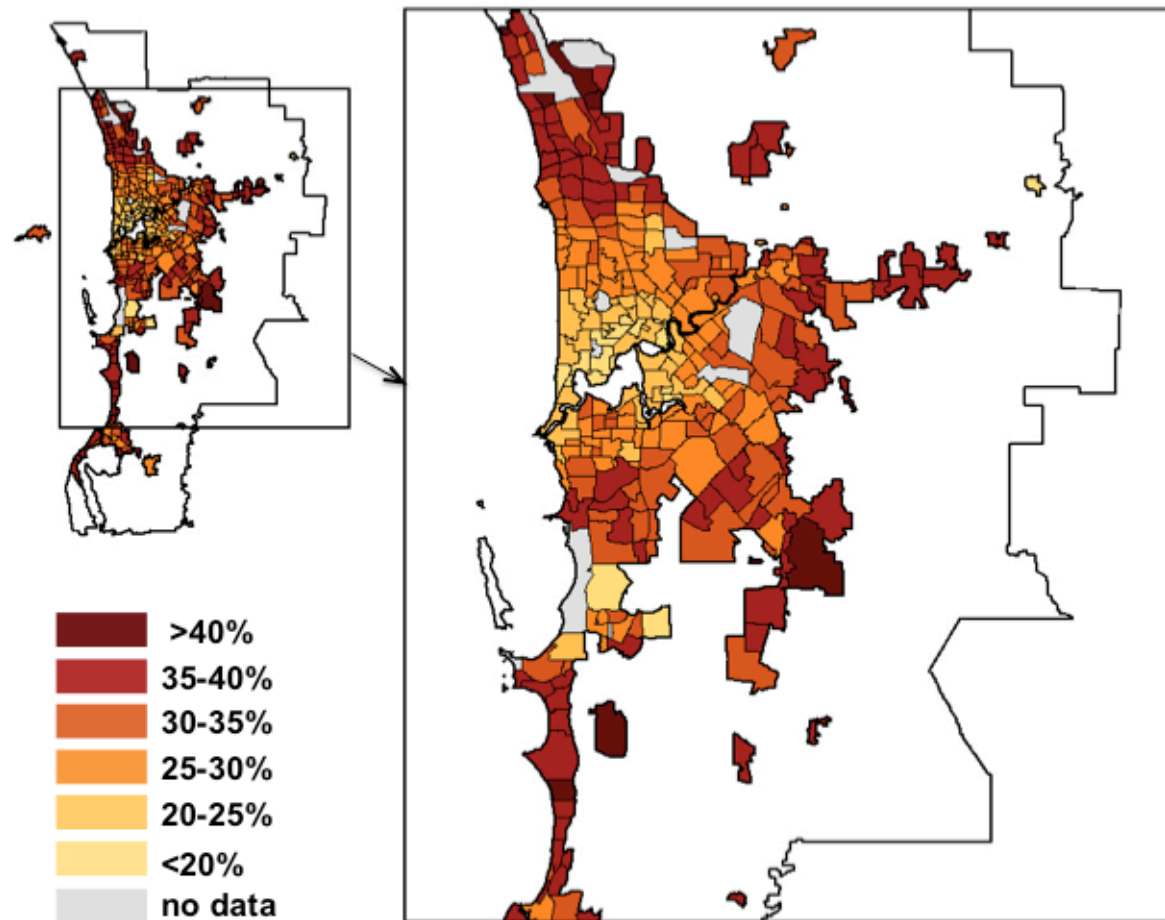
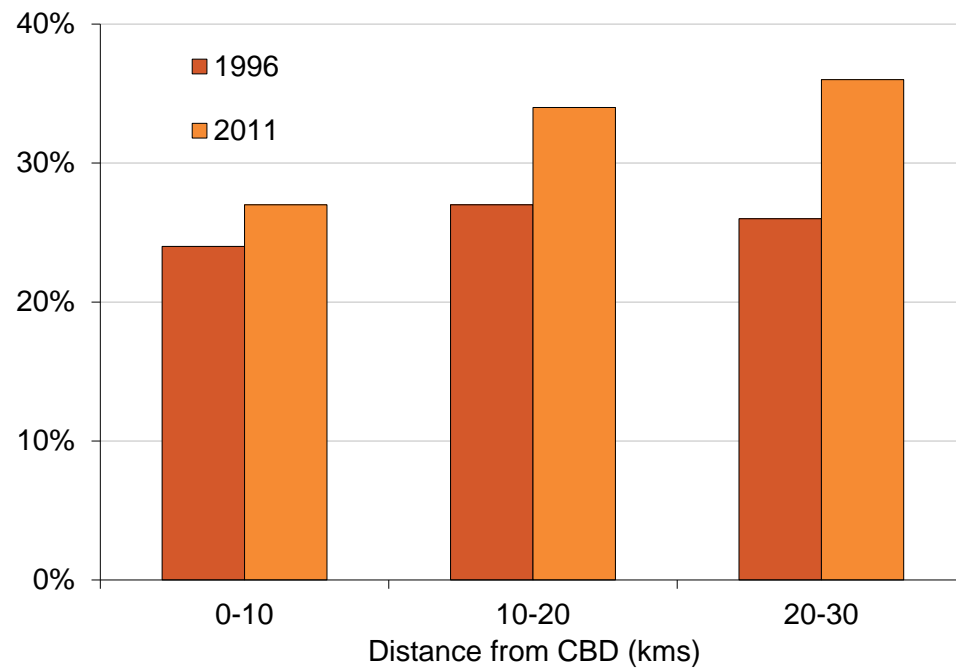


Figure 9: Percentage of residents (aged 25-65) with vocational qualifications, Perth 2011



Who lives where: Perth

Figure 10: Percentage of residents with vocational qualifications by distance from the CBD, Perth, 1996 and 2011



Who lives where: Perth

Figure 11: Percentage of residents (aged 25-65) with no post-school qualifications, Perth, 1991-2001

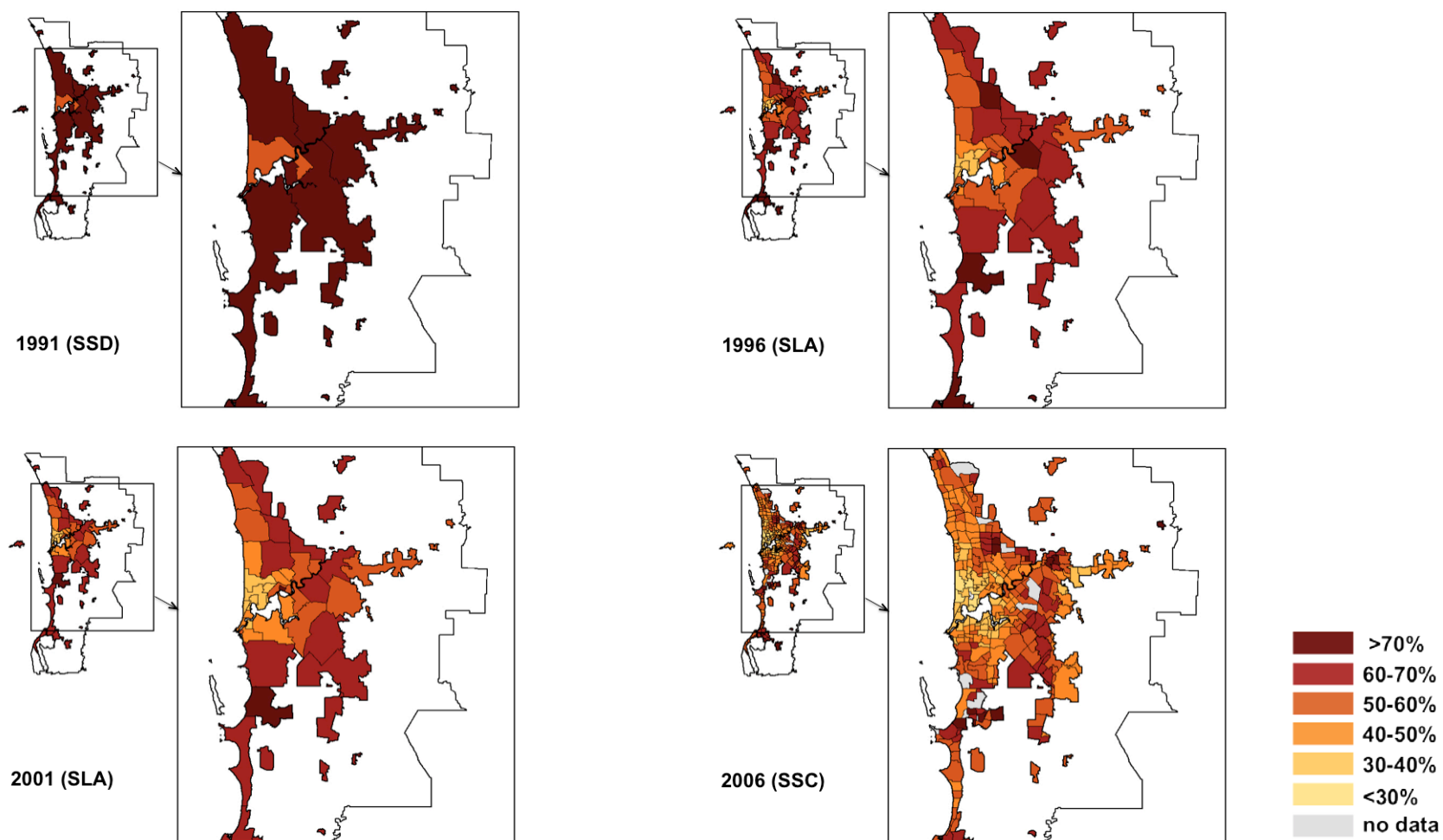
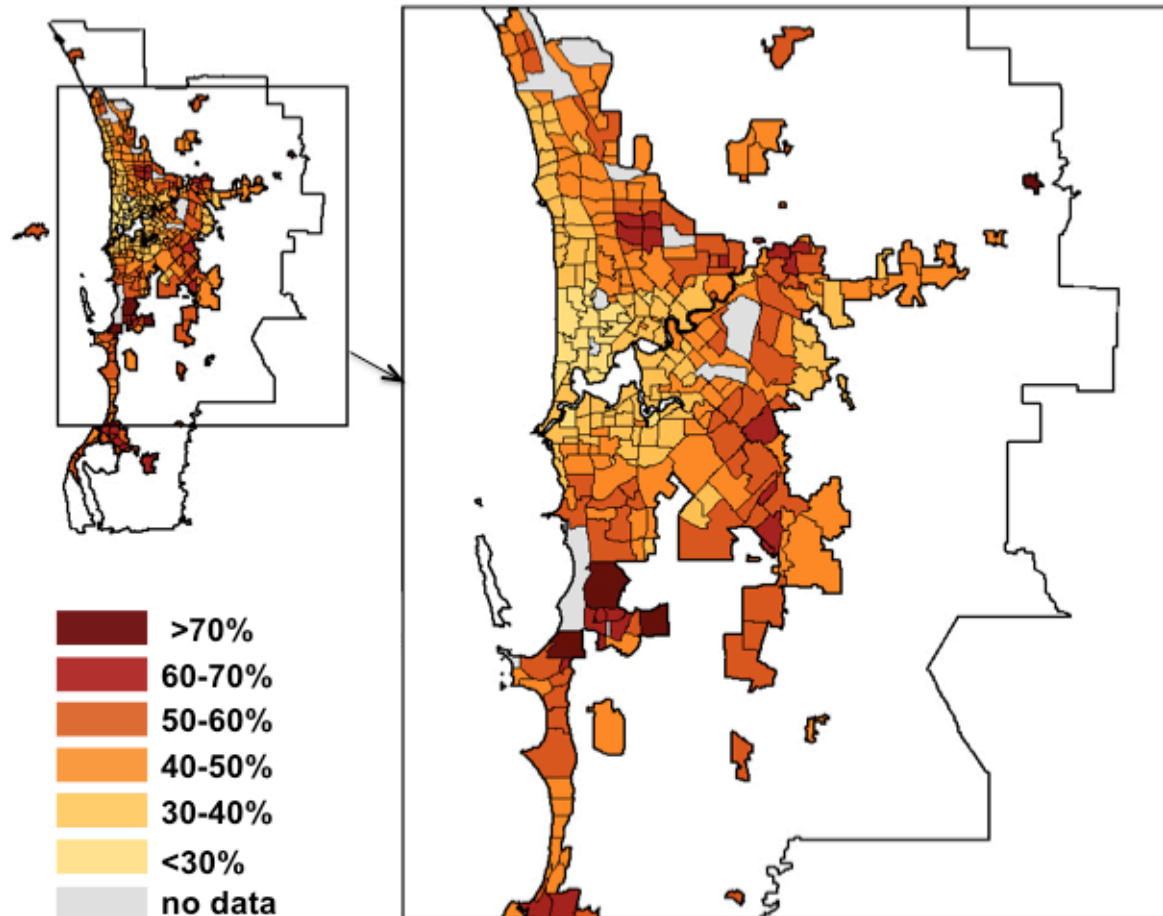
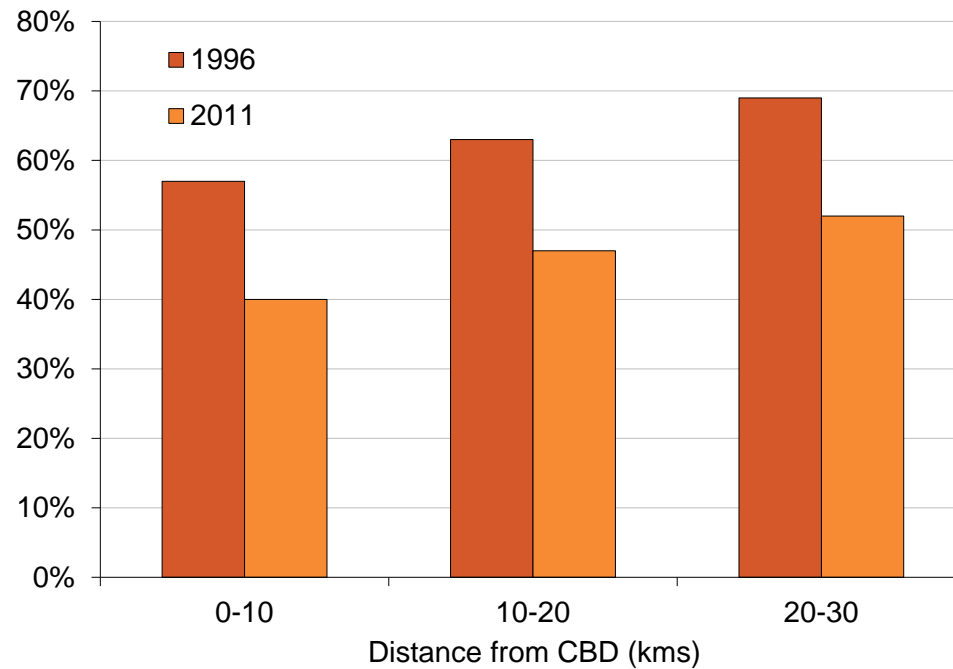


Figure 12: Percentage of residents (aged 25-65) with no post-school qualifications, Perth 2011



Who lives where: Perth

Figure 13: Percentage of population with no post-school qualifications by distance from CBD, Perth, 1996 and 2011



4. Employment

This section maps various aspects of employment in Perth.

Share of population in jobs (Figures 14-16)

The first set of maps (Figure 14 and Figure 15) show the employment to population ratio for residents aged between 25 and 65 across five census periods (1996-2011). In these maps only people currently working are classified as 'employed', and not those who are unemployed but looking for work. This employment to population ratio differs from the labour force participation rate, which counts those unemployed but actively seeking work as members of the labour force. Labour force participation is mapped for 2011 only (Figure 16).

Again, a geographic pattern emerges. Areas close to the city centre show high ratios of employment to population, as do many outer suburban areas (darker shaded areas). This pattern strengthens over time, with ratios rising above 80 per cent in many inner and fringe suburbs. On the other hand, low ratios (below 60 per cent) persist across census periods in certain areas in the south, east and northeast of Perth (lightest shaded areas).

The 2011 map of labour force participation (Figure 16) confirms this picture. There is some overlap between those suburbs with low labour force participation rates and suburbs where a high proportion of residents have a low median income and no formal educational qualifications beyond secondary school (see previous sections).

Labour force participation and gender (Figure 17)

When we analyse labour force participation on the basis of gender we find significant variation in the level of female participation by suburb. As can be seen in Figure 17, areas where the difference between male and female participation in the workforce is higher (greater than 20 per cent – darkest shaded suburbs on the map) tend to be located in the outer suburbs. There are several possible explanations for this difference.

The major barriers to increased female participation are financial, because the interaction of income tax, withdrawal of family payments and childcare costs can make it economically unattractive for women to re-enter the workforce after having a child. These disincentives have a stronger effect on women from lower income households. Hence, the gender participation gap might be higher in suburbs with a lower median income.⁹

Along with these factors however, there may be a more distinctly spatial element in explaining the gap between male and female labour force participation in these suburbs, which is that suburbs with comparatively low levels of female participation lack readily accessible jobs. Since women more frequently have primary responsibility for the care of young children and/or aged relatives they often need to be within a short journey time of home. This has been referred to as “the spatial leash”.¹⁰ Greater numbers of women may therefore be unable or unwilling to take up jobs that require a longer commute.

⁹ Daley, *et al.* (2012)

¹⁰ Pocock, *et al.* (2012) p. 90

Disconnected Youth (Figure 18)

The term 'disconnected youth' refers to young adults (aged 17-24) who are not in employment, education or training (sometimes described as 'NEETs' (Not in Employment, Education or Training) or described as 'neither earning nor learning').

To determine the extent of youth disconnection by area we have used census data (counting people by place of usual residence) to calculate the proportion of 17-24 year olds who are neither in the workforce (full or part-time) nor undertaking any form of formal study or training.¹¹

A high level of youth disconnection in an area can be seen as a warning sign for the future, since the consequences of limited education and a lack of work experience can "snowball across the life course, coming to affect everything from earnings and self-sufficiency to physical and mental health and marital prospects".¹² In Figure 18, high levels of youth disconnection (above 25%) can be identified in certain suburbs. There is some overlap with areas that show low levels of overall adult workforce participation and low qualification levels. This suggests an intergenerational transfer of disadvantage.

¹¹ We have counted people with a studying status in the census of either "not attending" or "both not stated" and a labour force status (LFSP) of "Not in the labour force".

¹² Burd-Sharps and Lewis (2012) p.1

Access to jobs (Figures 19 & 20)

Another way to think about the distribution of employment is to map relative 'access' to jobs. State governments produce transport models that attempt to replicate the travel behaviour of residents. When combined with job locations, these models can be used to map access to jobs from different suburbs by different modes of transport with a given travel time.

In this section job access is mapped using a one-way car journey of up to 45 minutes (Figure 19) and a one-way journey by public transport trip of up to 60 minutes (Figure 20). These durations were chosen to represent a reasonable upper limit on commuting times in an Australian context, based on current travel patterns. In 2006, the average journey to work for full-time employees in Australia's four largest cities ranged from 35 minutes in Sydney to 26 minutes in Perth.¹³ While residents of outer suburbs generally have longer journey times on average than residents of inner areas the differences are modest. (Inner city residents take longer to travel short distances because there is more congestion and because they are more likely to walk, cycle or use public transport.)¹⁴

A higher limit was chosen for travel by public transport because these journeys generally take longer than trips by private car (though they often offer other savings or benefits). The maps show that most Perth residents can reach most jobs by car within 45 minutes, however, a central location has clear benefits for improved access to jobs by public transport.

¹³ Wilkins, *et al.* (2009)

¹⁴ BITRE (2010);BITRE (2011);BITRE (2012)

Who lives where: Perth

Figure 14: Employment to population ratio (residents aged 25-65), Perth, 1991-2006

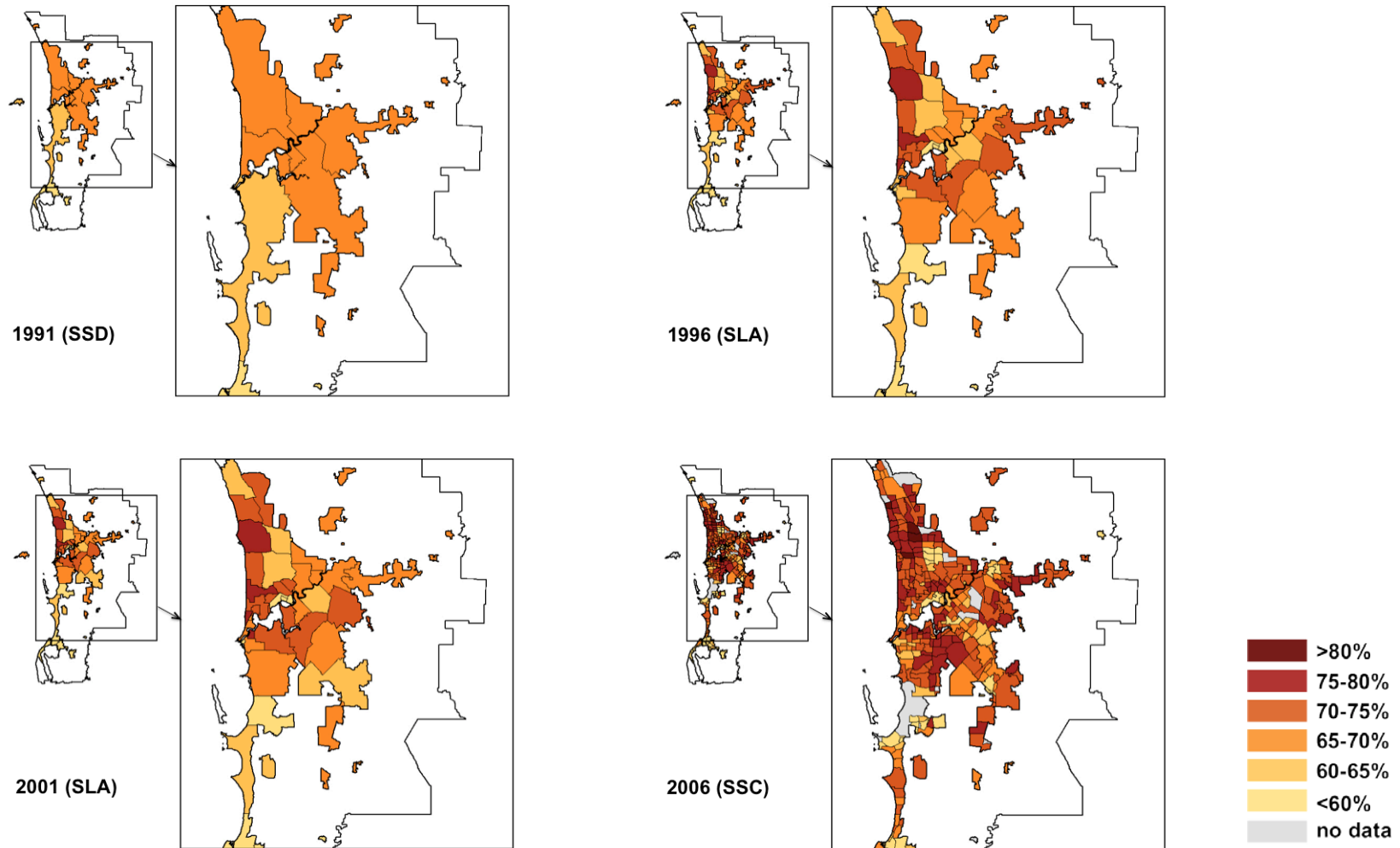


Figure 15: Employment to population ratio (residents aged 25-65), Perth, 2011

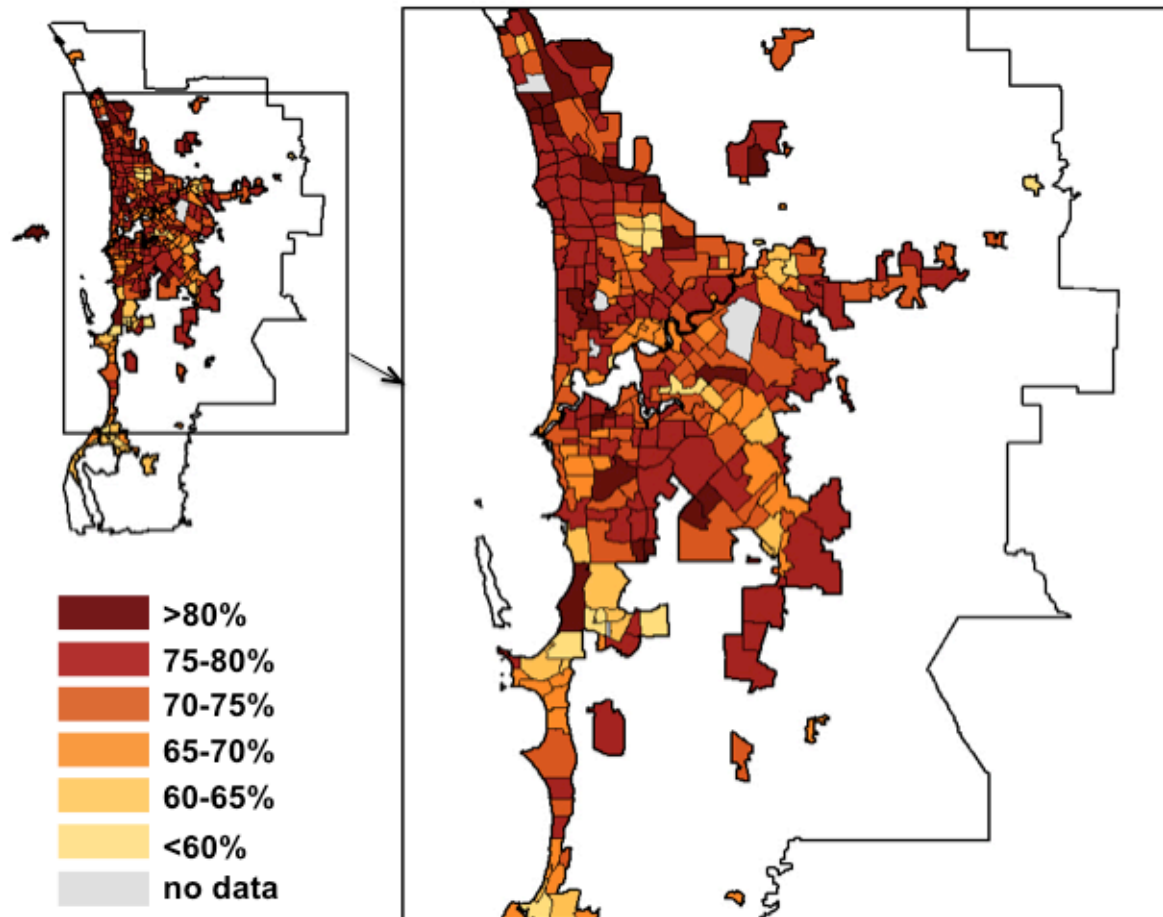
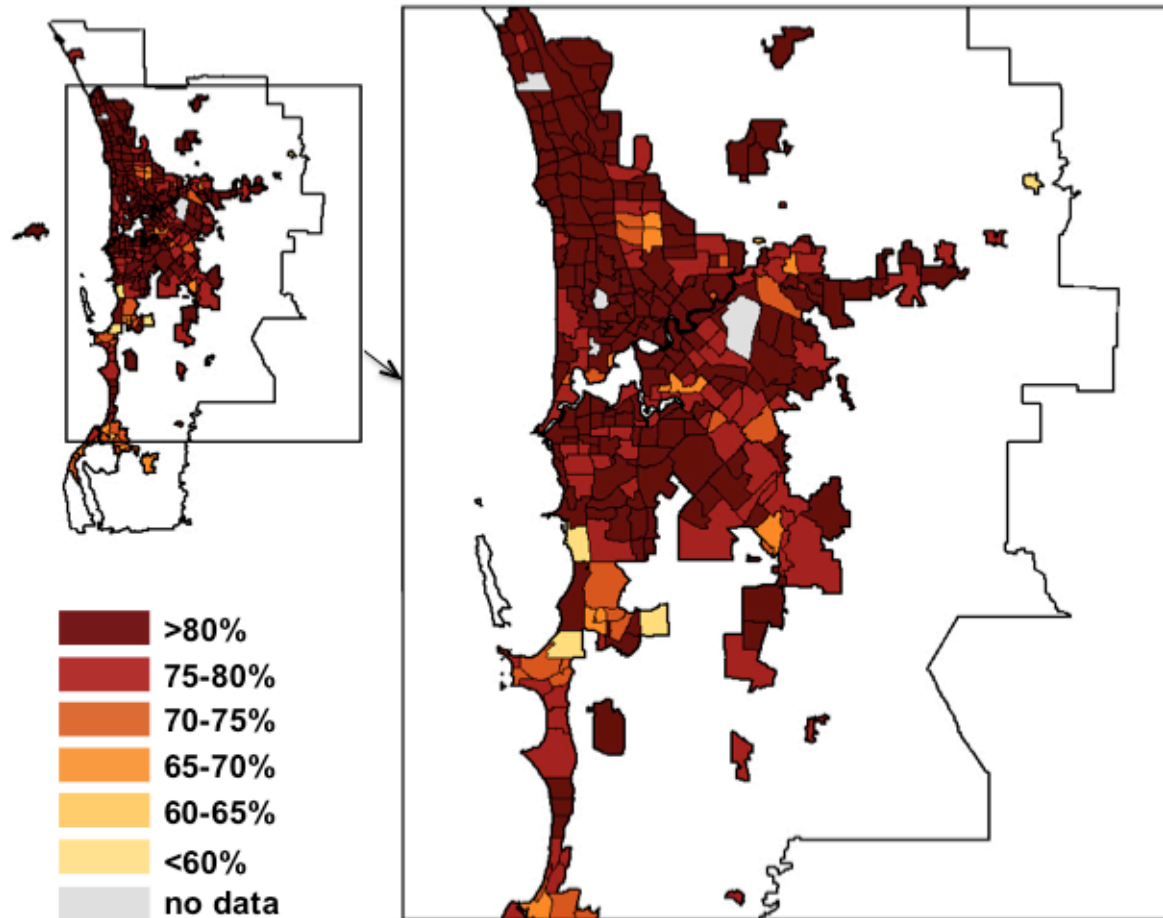


Figure 16: Labour force participation rate (residents aged 25-65), Perth, 2011



Who lives where: Perth

Figure 17: Difference in male and female labour force participation (residents aged 25-65), Perth, 2011

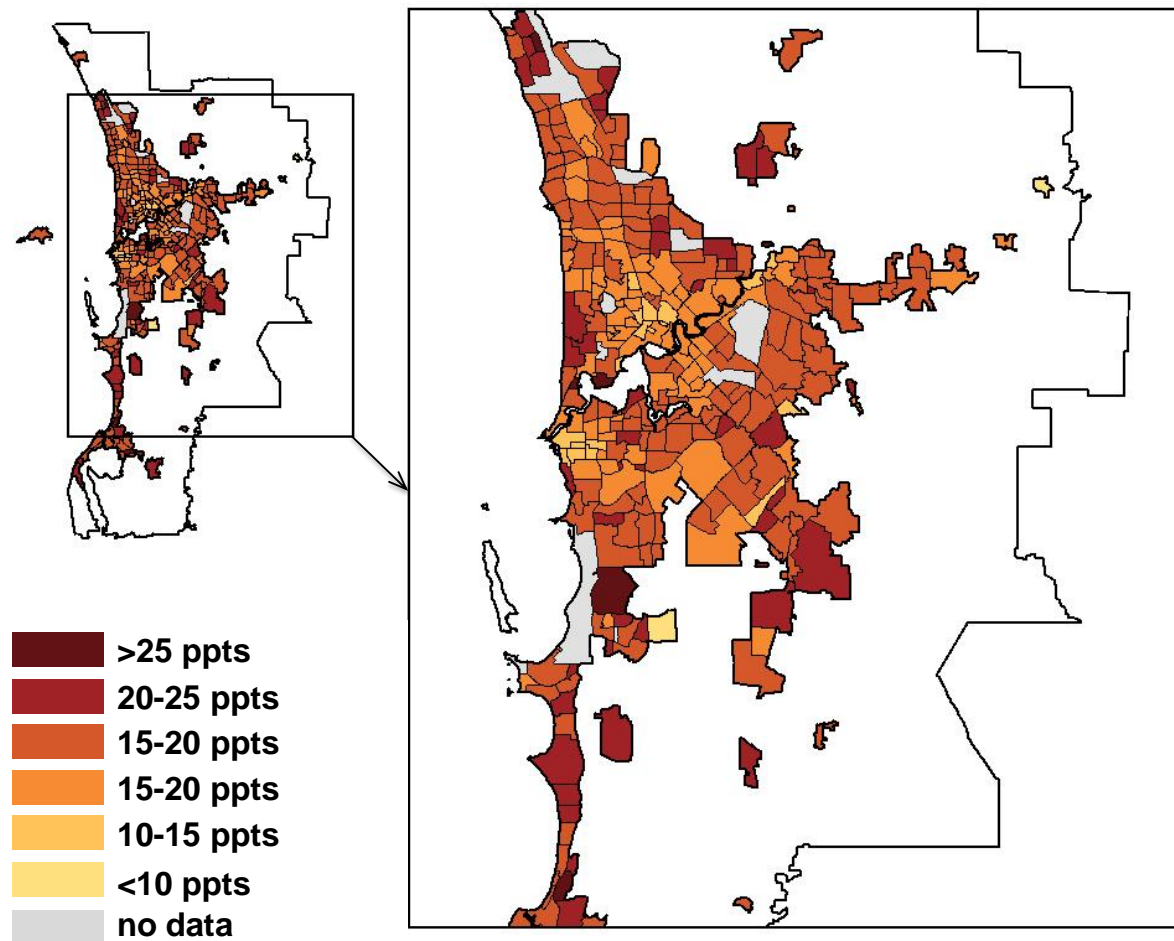
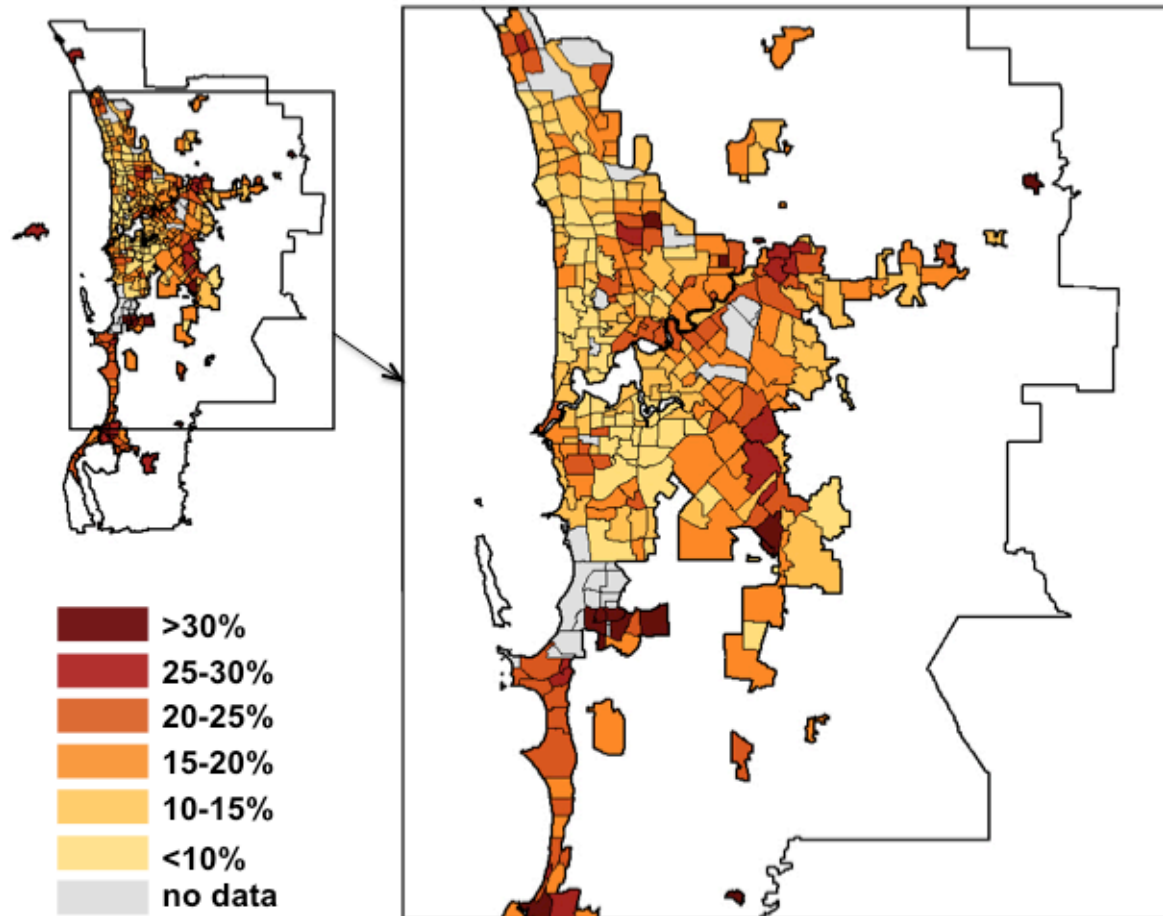
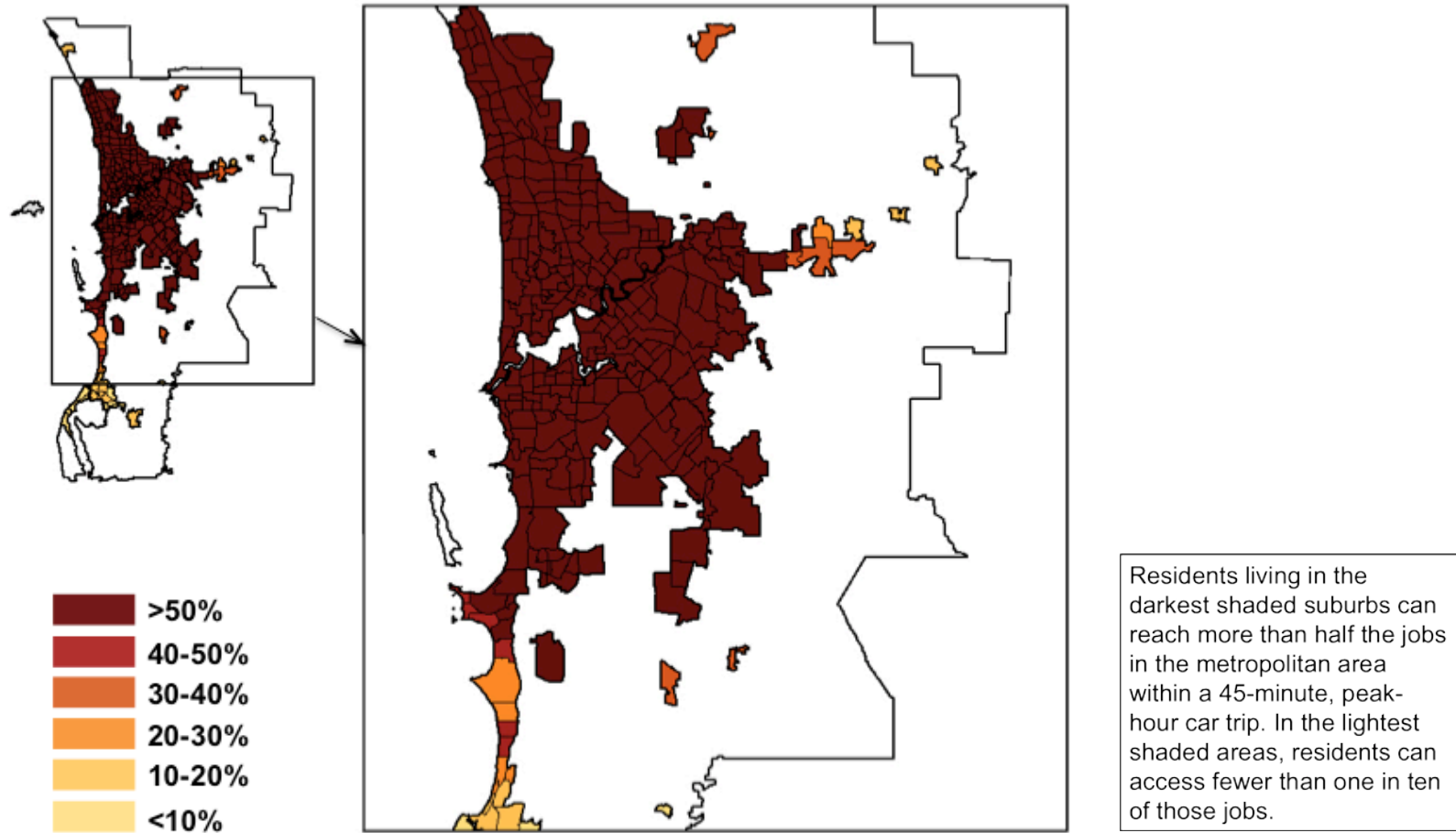


Figure 18: Percentage of disconnected youth (ages 17-25), Perth, 2011



Who lives where: Perth

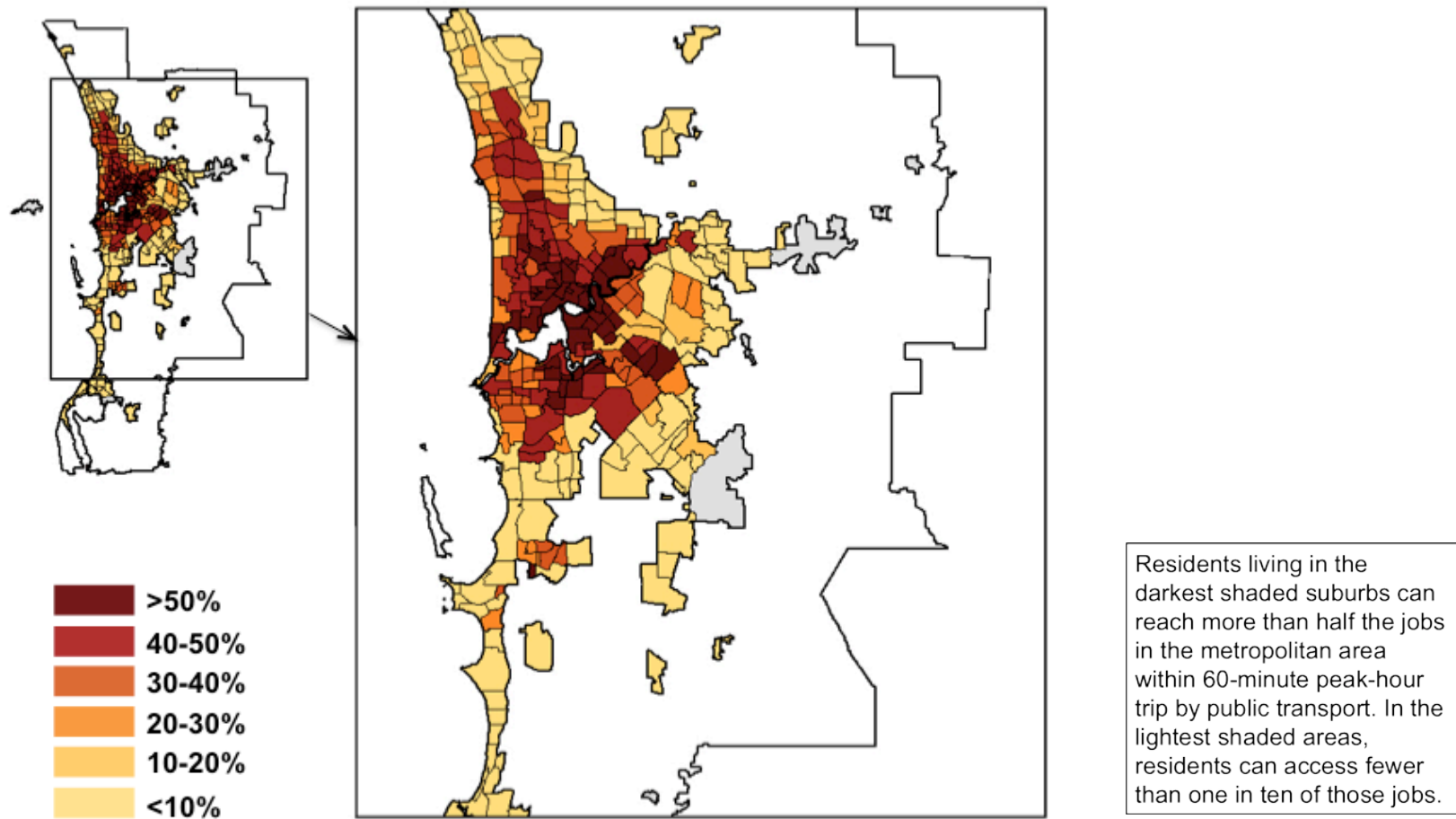
Figure 19: Percentage of jobs that can be reached in a 45-minute car trip, Perth, 2011



Source: SGS Economics and Planning using Perth Strategic Transport Evaluation Model supplied by the WA Department of Planning

Who lives where: Perth

Figure 20: Proportion of jobs that can be reached with a 60-minute public transport trip, Perth, 2011



Source: SGS Economics and Planning using Perth Strategic Transport Evaluation Model supplied by the WA Department of Planning

5. References

- BITRE (2010) *Population growth, jobs growth and commuting flows in Perth*. Bureau of Infrastructure, Transport and Regional Economics, C. o. Australia. Canberra.
- BITRE (2011) *Population growth, jobs growth and commuting flows in Melbourne*. Bureau of Infrastructure, Transport and Regional Economics, C. o. Australia. Canberra.
- BITRE (2012) *Population growth, jobs growth and commuting flows in Sydney*. Bureau of Infrastructure, Transport and Regional Economics, C. o. Australia. Canberra.
- Burd-Sharps, S. and Lewis, K. (2012) *One in Seven: Ranking youth disconnection in the 25 largest metro areas*. Social Science Research Council. Washington.
<http://WWW.MEASUREOFAMERICA.ORG>.
- Dadush, U., Dervis, K., Puritz-Milsom, S. and Stancil, B. (2012) *Inequality in America: Facts, Trends and International Perspectives*. Washington D.C., Brookings Institution Press.
- Daley, J., McGannon, C. and Ginnivan, L. (2012) *Game-changers: Economic reform priorities for Australia*. Grattan Institute. Melbourne.
- Greenville, J., Pobke, C. and Rogers, N. (2013) *Trends in the Distribution of Income in Australia*. Productivity Commission Staff Working Paper, Productivity Commission, C. o. Australia, March. Canberra.
- Kelly, J.-F., Mares, P., Harrison, C., O'Toole, M., Hunter, J. and Oberklaid, M. (2013) *Productive cities: Opportunity in a changing economy*. Grattan Institute.
- Pink, B. (2011a) *Australian Standard Geographical Classification*. Australian Bureau of Statistics. Australian Government, ABS Catalogue No. 1216.0, Canberra.
- Pink, B. (2011b) *Australian Statistical Geography Standard (ASGS): Volume 3 - Non ABS Structures*. Australian Bureau of Statistics. Australian Government, ABS Catalogue No. 1270.0.55.003, Canberra.
- Pocock, B., Skinner, N. and Williams, P. (2012) *Time Bomb: Work, rest and play in Australia today*. Sydney, NewSouth.
- Wilkins, R., Warren, D. and Hahn, M. (2009) *Families, Incomes and Jobs, Volume 4: A Statistical Report on Waves 1 to 6 of the HILDA Survey*. HILDA Melbourne Institute of Applied Economic and Social Research, U. o. Melbourne. Melbourne.