

Presentation to the

# Standing Committee of Indigenous Affairs

By Anyinginyi Health Aboriginal Corporation  
LT, Chairperson  
Trevor Sanders, General Manager  
1 April 2014



# Anyinginyi Health

- ▶ **Aboriginal Community controlled established in 1984**
- ▶ **The major advantages of aboriginal community control are:**
  - **Engagement with communities**
  - **Tailoring services to community needs**
  - **The opportunity to be Innovative**



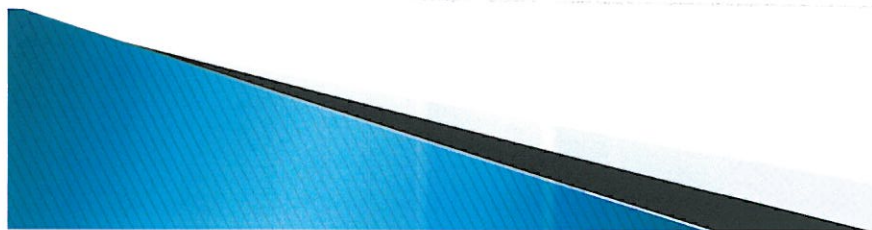
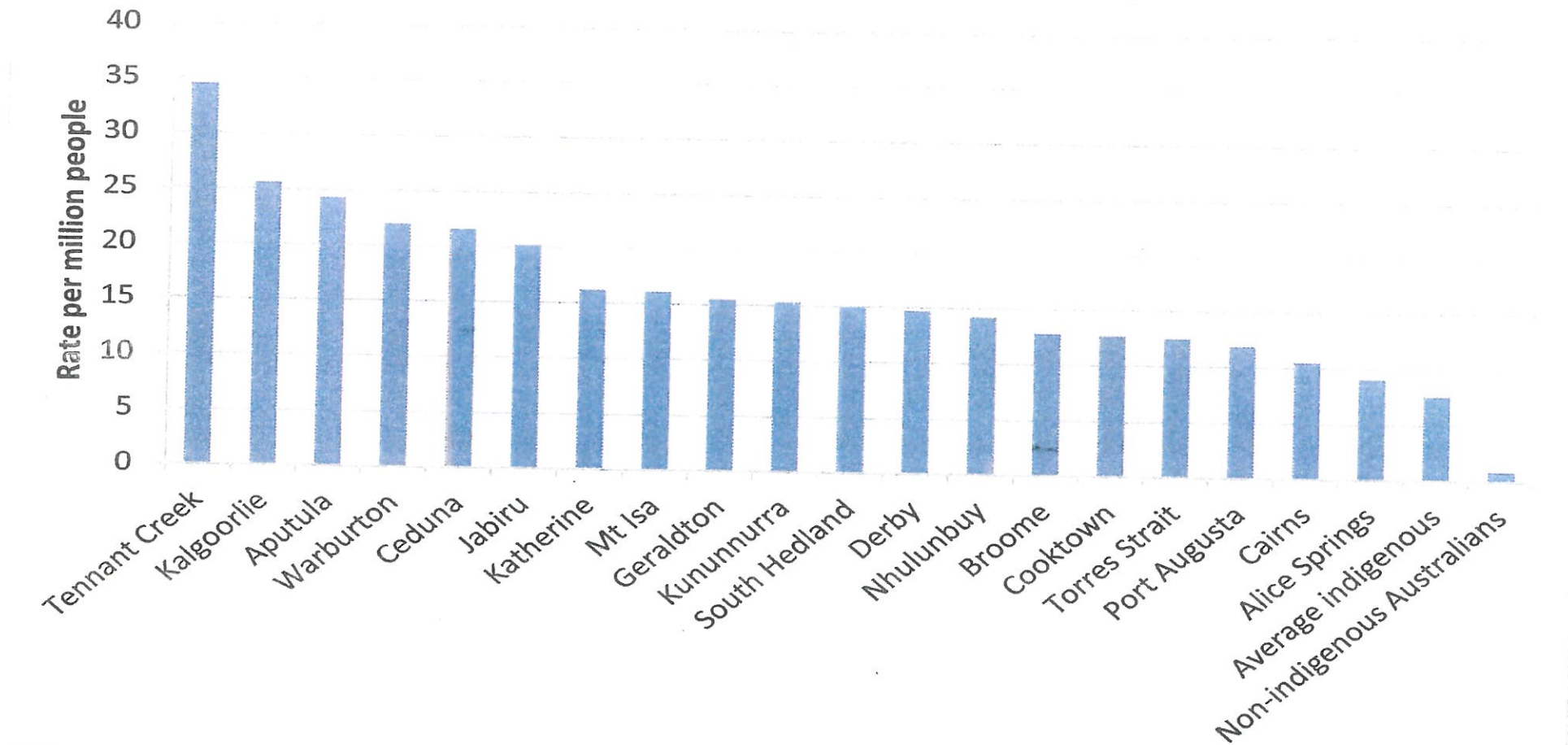
**Health Status – probably the  
worst in Australia**

**The major cause is alcohol**



# Renal disease

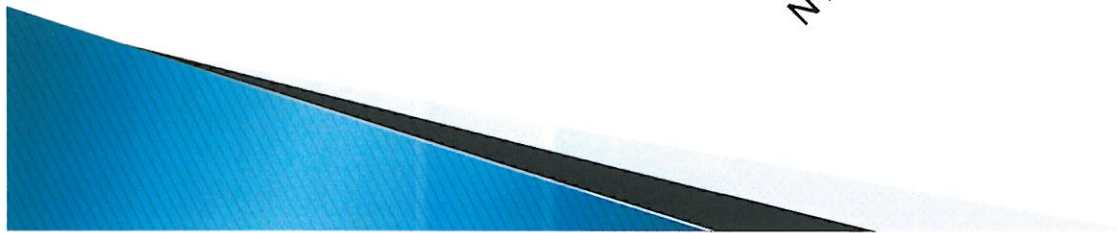
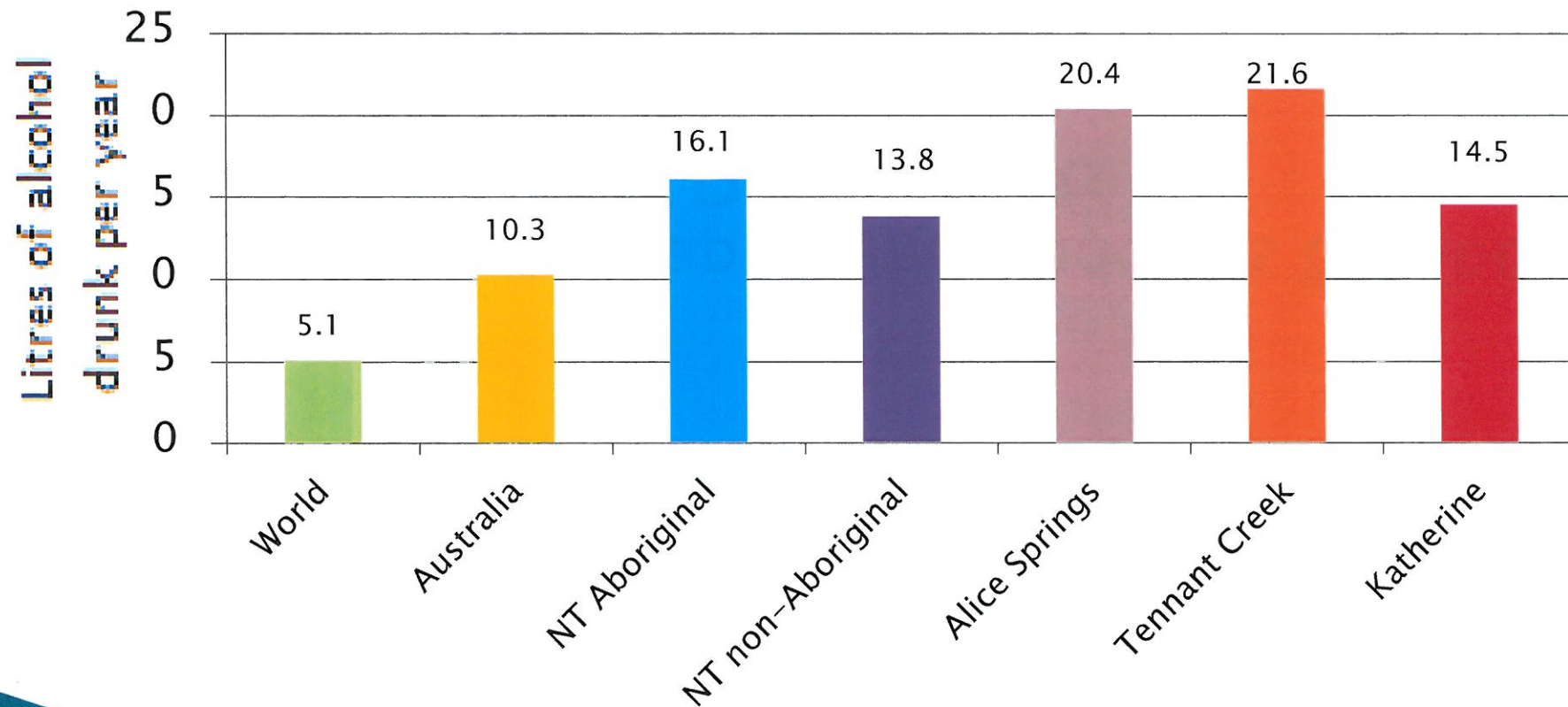
People diagnosed with end stage renal disease by ATSI regions 1993- 2001





# Alcohol

## ALCOHOL CONSUMED PER PERSON AGED 15+



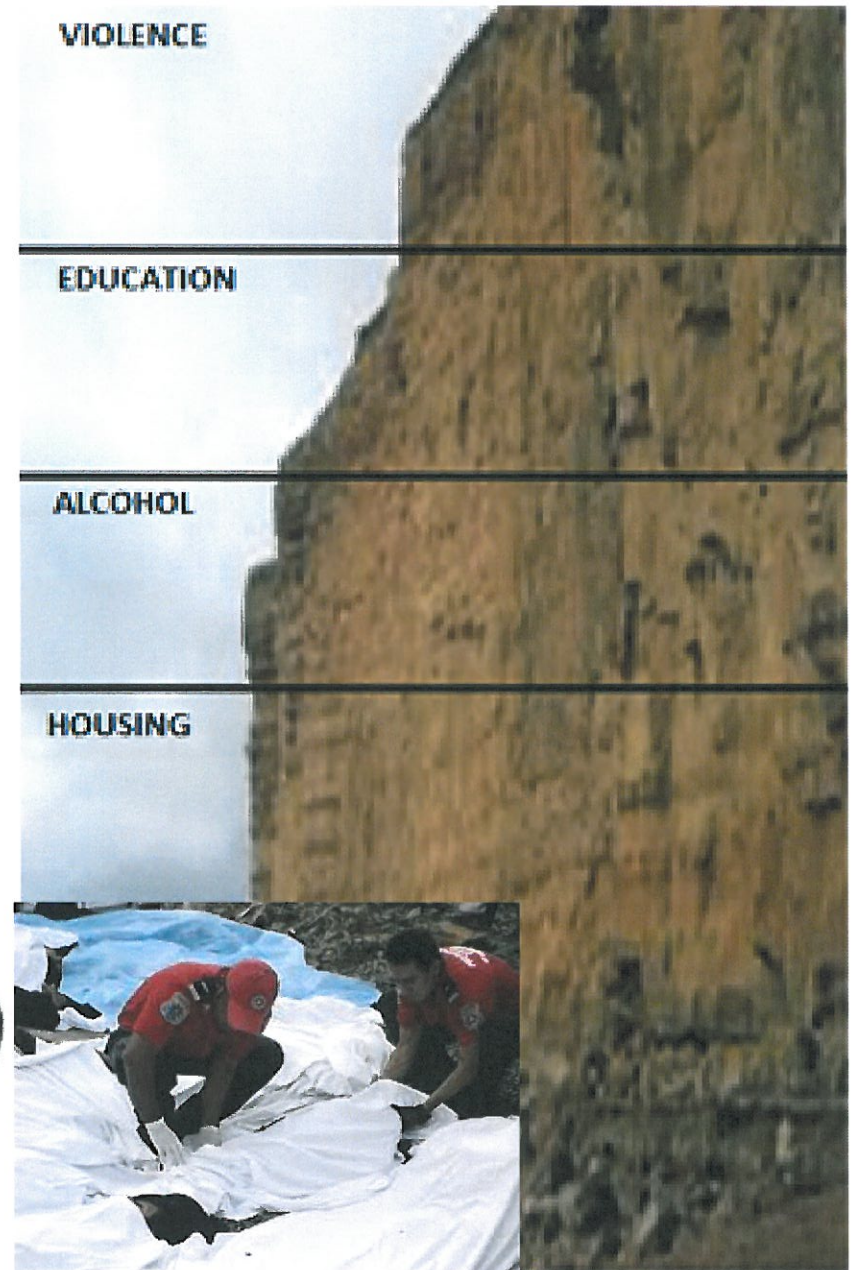
# Prevention is the Solution

- ▶ To Close the Gap we must address the Social Determinants



# Social Determinants

We have to move from being the ambulance at the bottom of the cliff...





... to Bulldozing the cliff

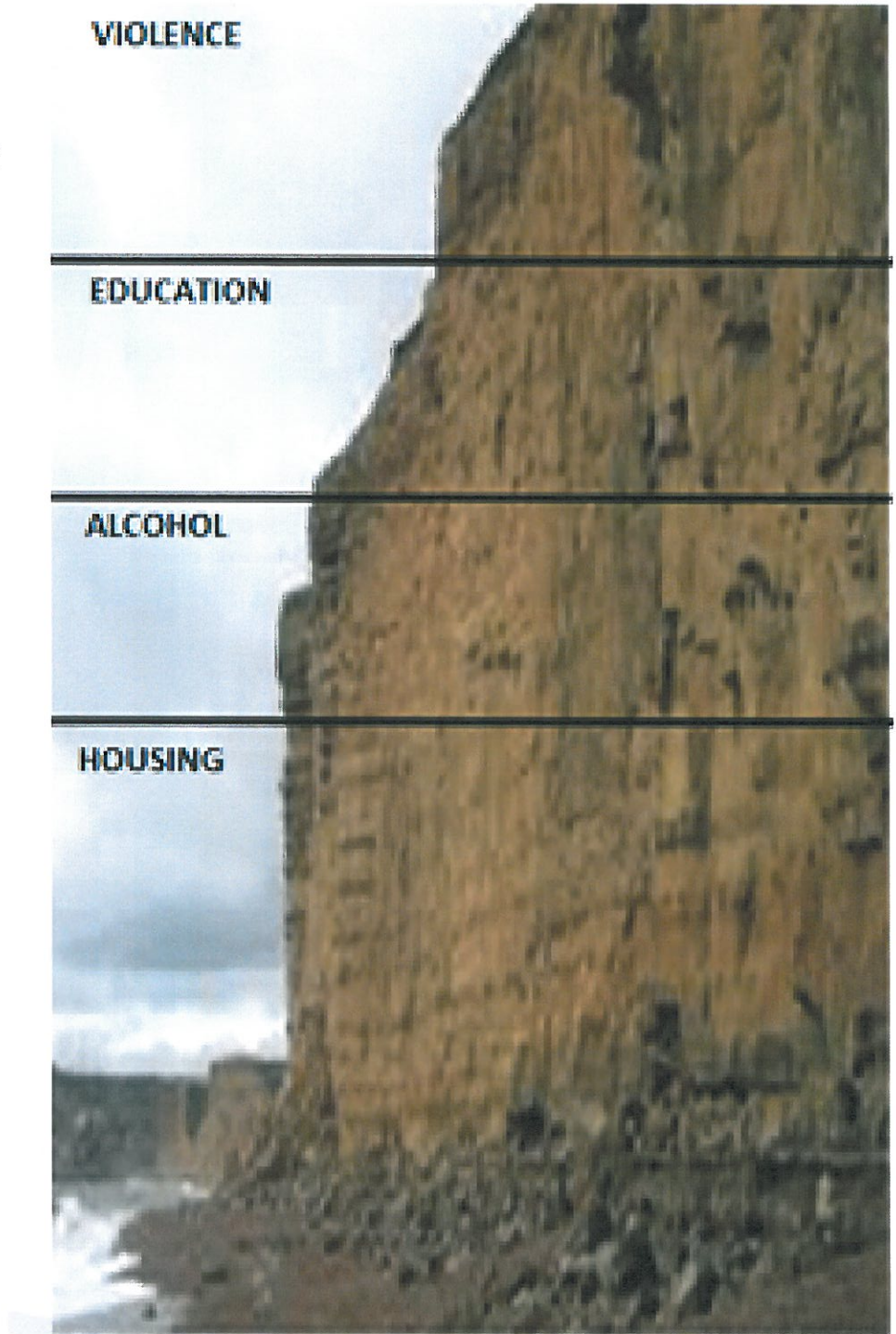


**VIOLENCE**

**EDUCATION**

**ALCOHOL**

**HOUSING**





# Housing and health

- ▶ **‘Healthy homes’** is one of seven strategic platforms identified by COAG as a ‘building block’ that needs to be in place in order to comprehensively address the current state of Indigenous disadvantage.

**A healthy home is a fundamental pre-condition of a healthy population**

*Source: Department of Health and Ageing Health performance framework 2012*

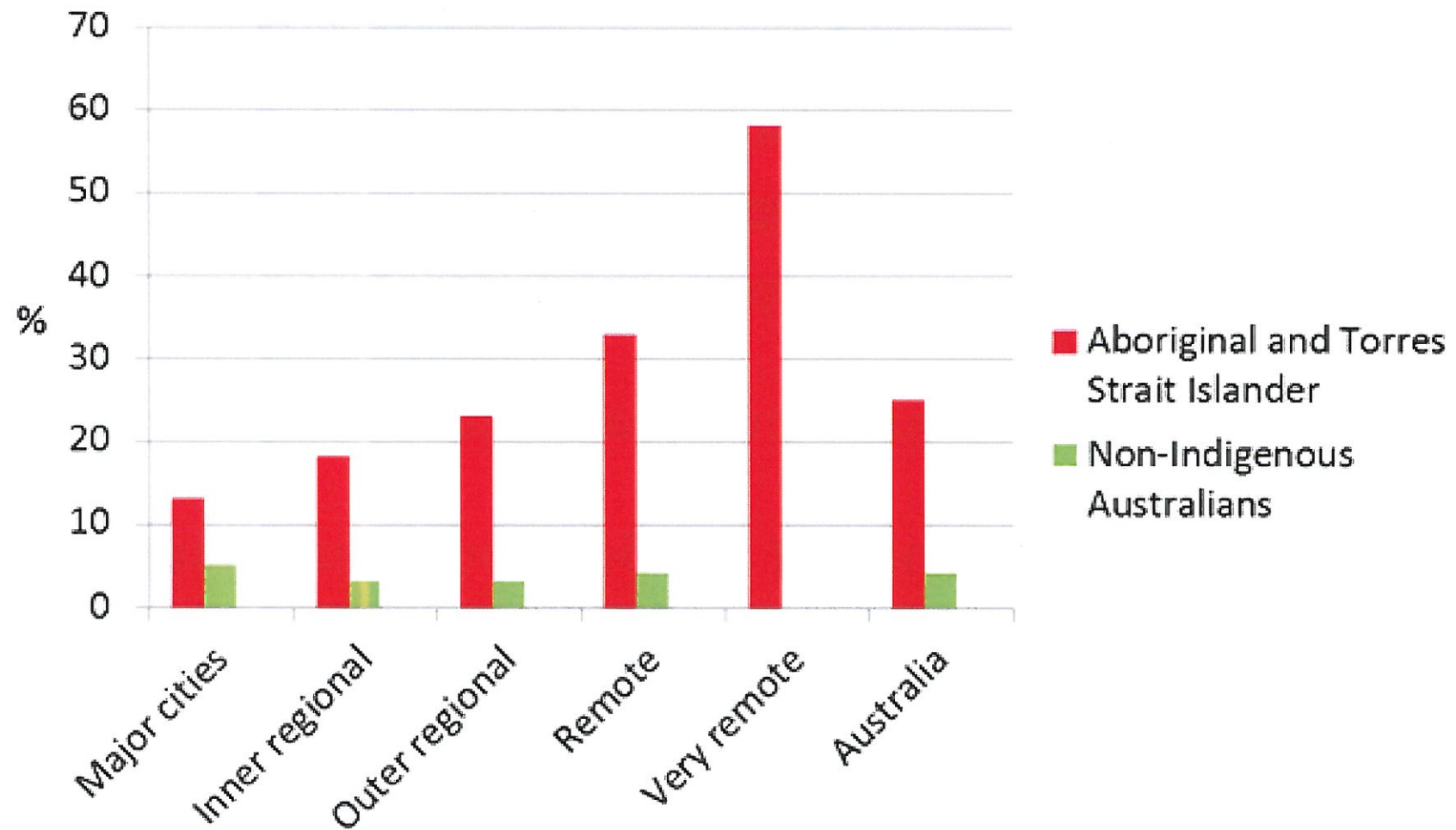


# Housing and health

- ▶ We can't change health status while people are living in overcrowded and/or sub-standard housing with the problems that go with it



Proportion of persons 15 years and over living in overcrowded households, based on the Canadian National Occupancy Standard, by indigenous status and remoteness, 2008




Source: ABS and AIHW analysis of 2008 NATSISS, non-Indigenous data from Survey of Income and Housing 2007-08



# Employment and housing

## Innovation – the next step

- Employment housing not public housing
  - Linked to employment and work performance
    1. Lose job, lose accommodation
    2. Employer stipulates conditions of tenancy
    3. Employer manages tenancy
    4. Employer has conditions to protect the value of the asset
    5. Disputes and complaints managed by the employer
- 

# Employment and housing

- ▶ Clear feedback from Aboriginal staff to date is that they desire safe, secure and private accommodation
- ▶ Similar to the mining industry except it will accommodate direct family of the employee
- ▶ SELF FUNDED BY ANYINGINYI
- ▶ Potential impact on Tennant Creek
- ▶ Potential impact on N.T.

**Please support us in doing this**



# FASD – Our History

- ▶ Aware of level of alcohol consumption
- ▶ In early 2011 became aware of the great work at Fitzroy Crossing
- ▶ Since 2011/12 have been scavenging funding
  - 2011/12 – \$325K from Closing the Gap
  - 2012/13 – \$180K from Indigenous Family Support
  - 2013/14 – \$90K from Stronger Futures
    - \$100K from NT Department of Education
    - Self Funding by Anyinginyi
  - 2014/15 – Nothing





# FASD – Our History – continued

## ▶ What has been achieved

- Awareness of the community that in pregnancy 1 drink is 1 too many
- Health education tools
- National and International recognition

## ▶ Where to from here for FASD?

- All work together
- Research to develop clinical best practice
- More and more refined education



# Summary

- **We must take an innovative approach**
    - Reduce supply – takeaways
    - Address the causes e.g. housing
  - **The Aboriginal Community Controlled sector can provide innovation**
    - Please support this sector also help make it more robust
  - **Welcome recognition of FASD including NT Steering Committee**
  - **Help get all parties together to address FASD**
- 