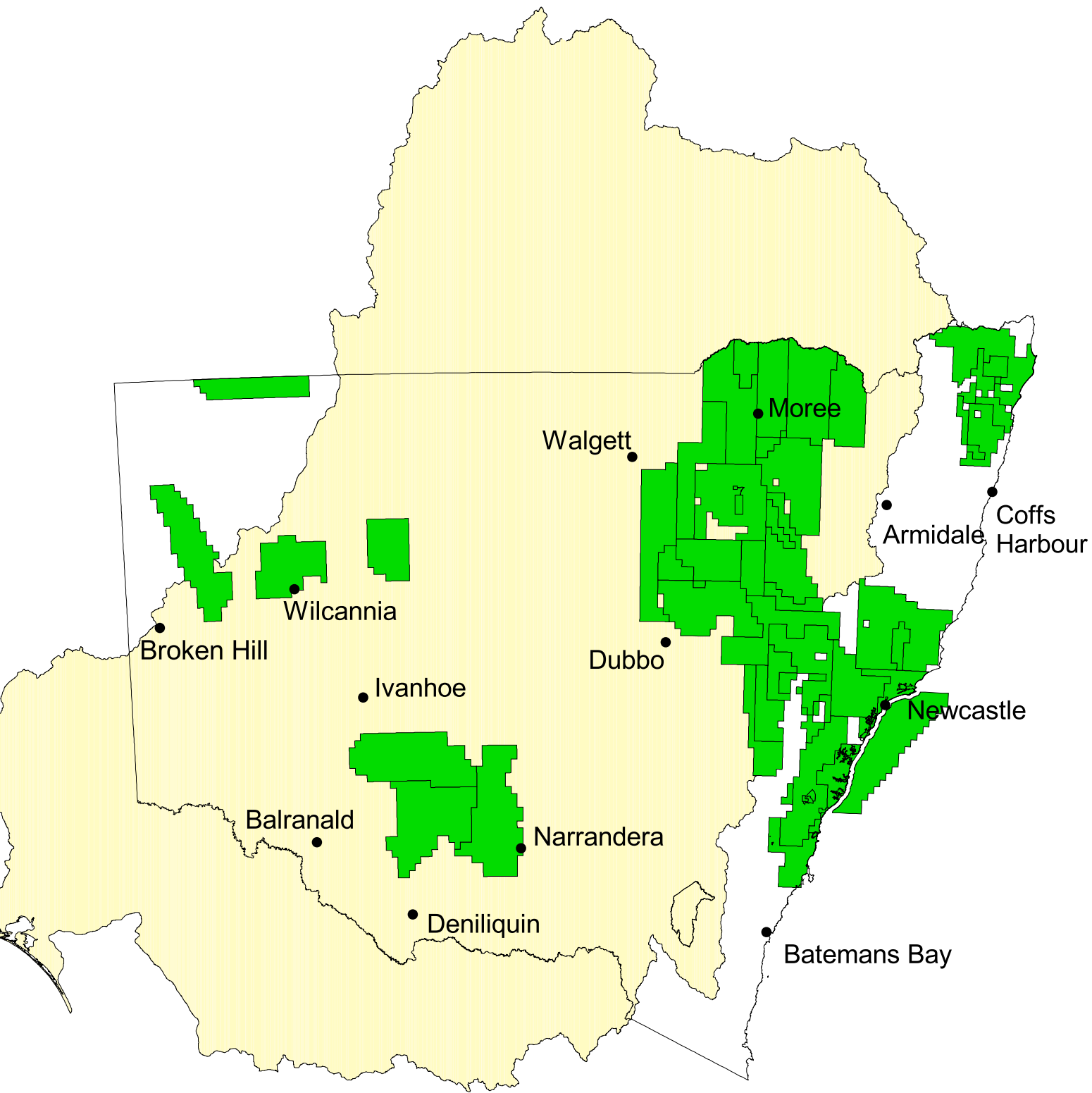




MAP1: PETROLEUM EXPLORATION LICENCES IN NSW

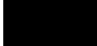
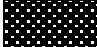

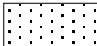
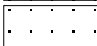

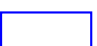


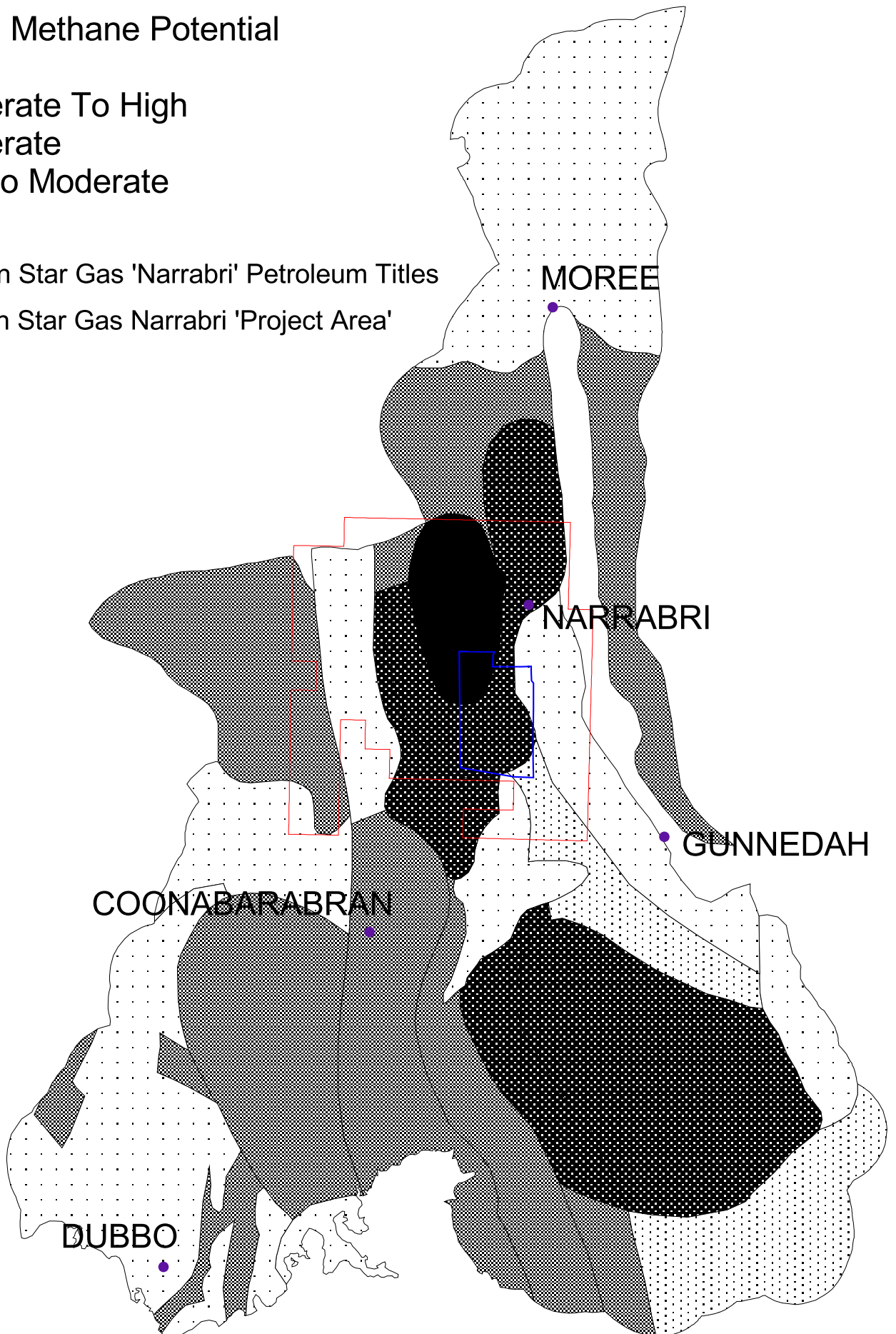
 Current Petroleum Exploration Licences
 Murray-Darling Basin

Produced using data from MinView,
downloaded July 14th 2011

Map 1: Coal Seam Gas Resource Potential in the Brigalow Belt South

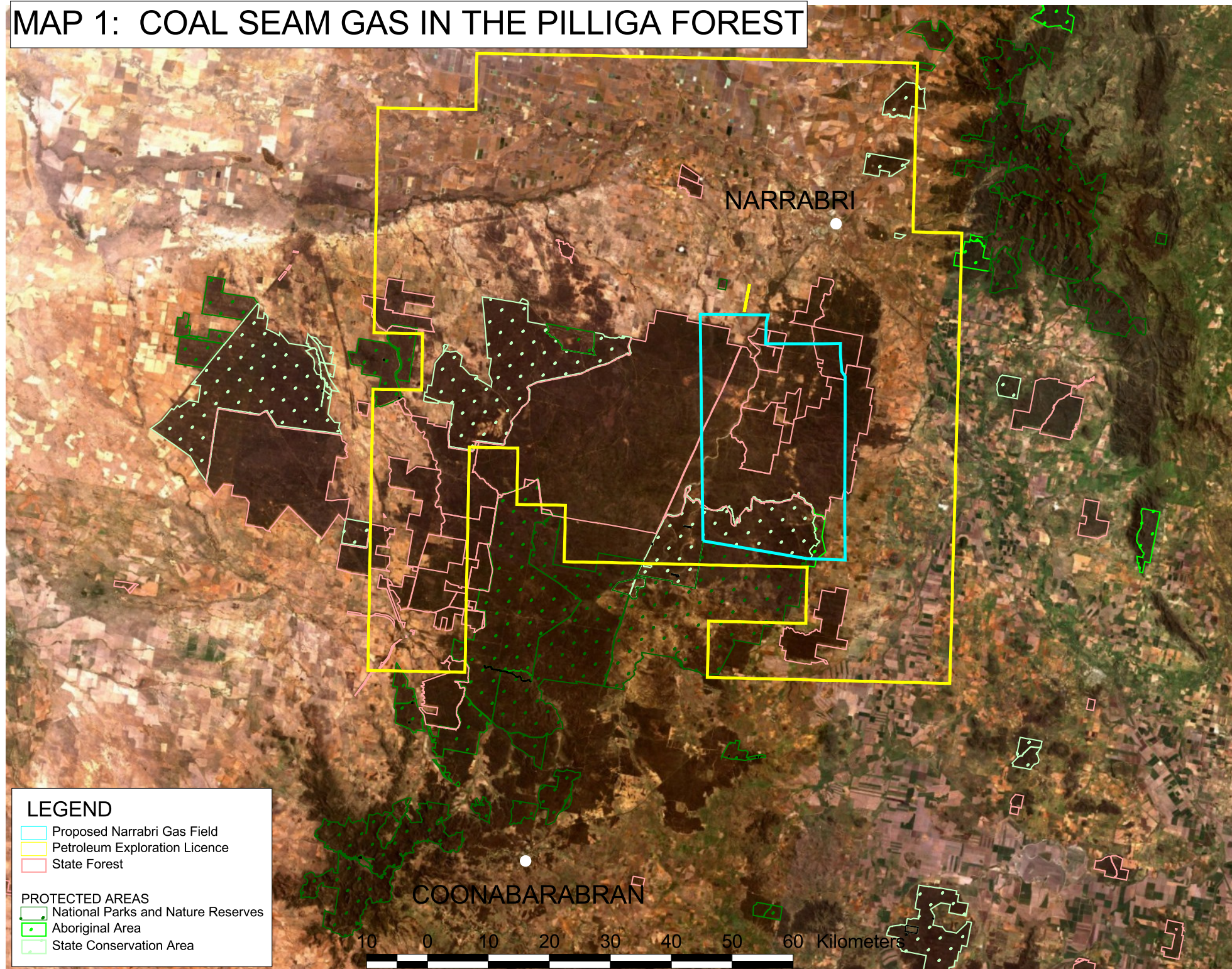
Coal Seam Methane Potential

-  High
-  Moderate To High
-  Moderate
-  Low to Moderate
-  Low
-  Eastern Star Gas 'Narrabri' Petroleum Titles
-  Eastern Star Gas Narrabri 'Project Area'



CSG Potential Data obtained under licence from DMR. Petroleum titles obtained from DMR via MinView.

MAP 1: COAL SEAM GAS IN THE PILLIGA FOREST



LEGEND

- Proposed Narrabri Gas Field
- Petroleum Exploration Licence
- State Forest

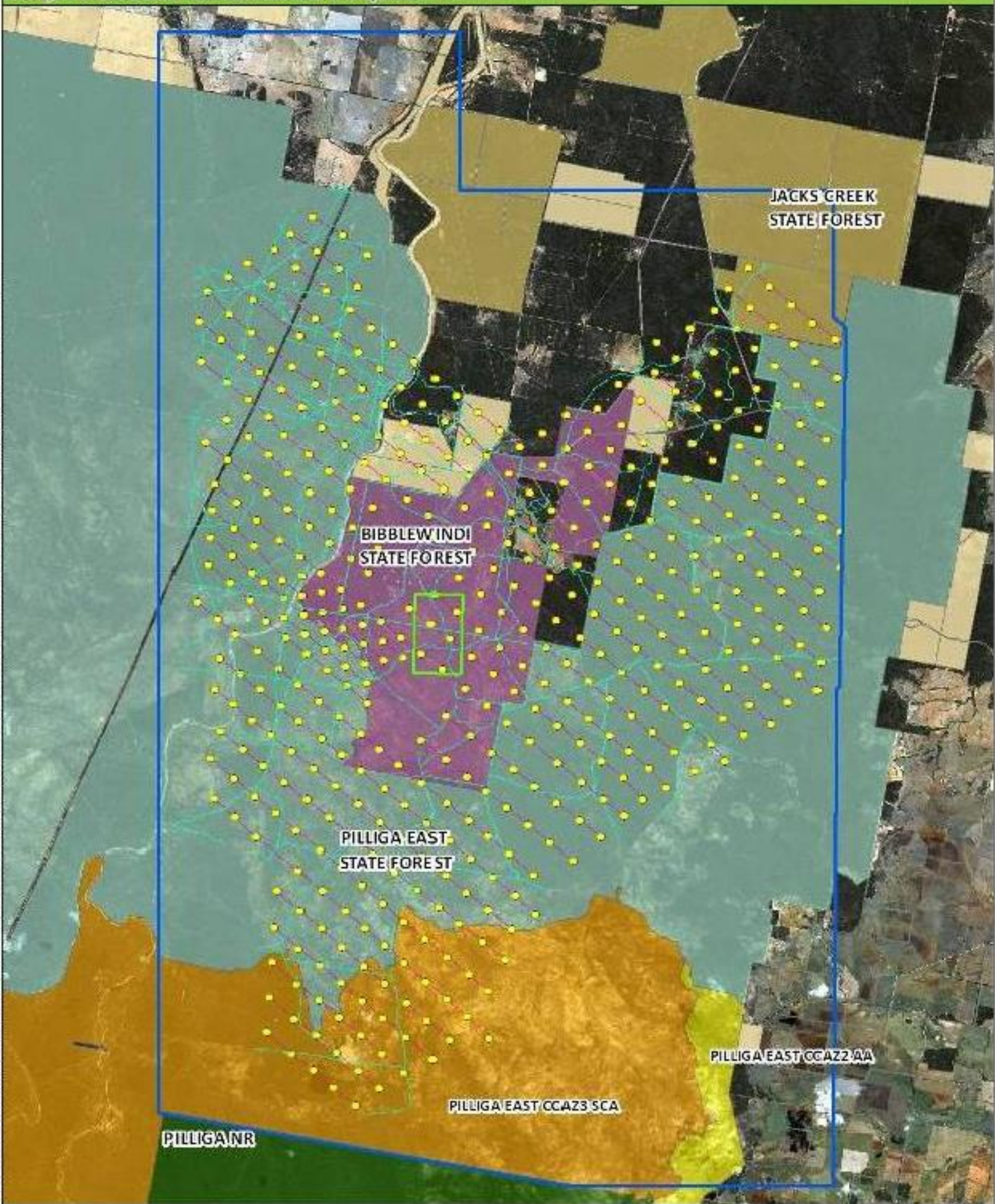
PROTECTED AREAS

- National Parks and Nature Reserves
- Aboriginal Area
- State Conservation Area

10 0 10 20 30 40 50 60 Kilometers



Project area and construction footprint



Legend

Project_area_boundary_modified_for_EPBC_referral

Existing access roads and GGS

GGS

Wells

Approximate location of gas processing and water management facilities, and other associated infrastructure

Crown Land

NPWS Estate

CCA ZONE 2 ABORIGINAL AREA

CCA ZONE 3 STATE CONSERVATION AREA

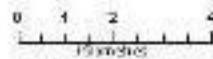
NATURE RESERVE

State Forest

BIBBLEWINDI

JACKS CREEK

PILLIGA EAST



Current Project ID:
COA 1904 NCA Zone 55





Photo 1: 'Pilot production' well drilled under exploration licence. Dewhurst 8 complex, located on private property in the Pilliga. Photo May 2010.

Photo 2: 'Pilot production' wells drilled under exploration licence. Dewhurst 8 complex, located on private property in the Pilliga. May 2010.





Photo 3: 'Pilot production' wells in Bibblewindi State Forest. Photo May 2010.

Photo 4: 'Pilot production' wells and water treatment dams in Bibblewindi State Forest. Photo May 2010.





Photo 5: Bibblewindi West Water Treatment works in Bibblewindi State Forest. Photo May 2010.

Photo 6: Bohena Evaporation ponds in Pilliga East State Forest. Photo May 2010.





Photo 7. Dewhurst 5 exploratory corehole. Pilliga East State Forest. Abandoned, not rehabilitated. Photo 2011.

Photo 8 & 9 (below). Dewhurst 6c, exploratory corehole, Pilliga East State Forest. Abandoned, not rehabilitated. Photo 2011.



Photo 10. Dewhurst 16H,
exploratory corehole. Unlined drill
pond overflowing on private land
during rain event in the Pilliga.
Taken 2010.



Photo 11. Dewhurst 16H exploratory
corehole. Drill pond and wellpad
flooding on private land during rain
event in the Pilliga. Taken 2010.





Photo 12. Bohena 2D exploratory corehole. Tree deaths from saline water spill, Pilliga East State Forest. Photo taken 2002.



Photo 13. Bohena 2D exploratory corehole. Tree deaths from earlier saline water spill. Photo 2011. Pilliga East State Forest.



Photo 14. Bibblewindi 22 pilot production well. Salt scald next to unlined drill pond, Pilliga East SF. Photo taken May 2009.

Photo 15. Bibblewindi 16 pilot production well. Salt scald adjacent to unlined drill pond, Bibblewindi SF. Photo 2011.



Photos 16-18. Miners drilling camp on Claredon, at Cains Crossing, Yarrie Lake Road. Photo taken in July 2011.

