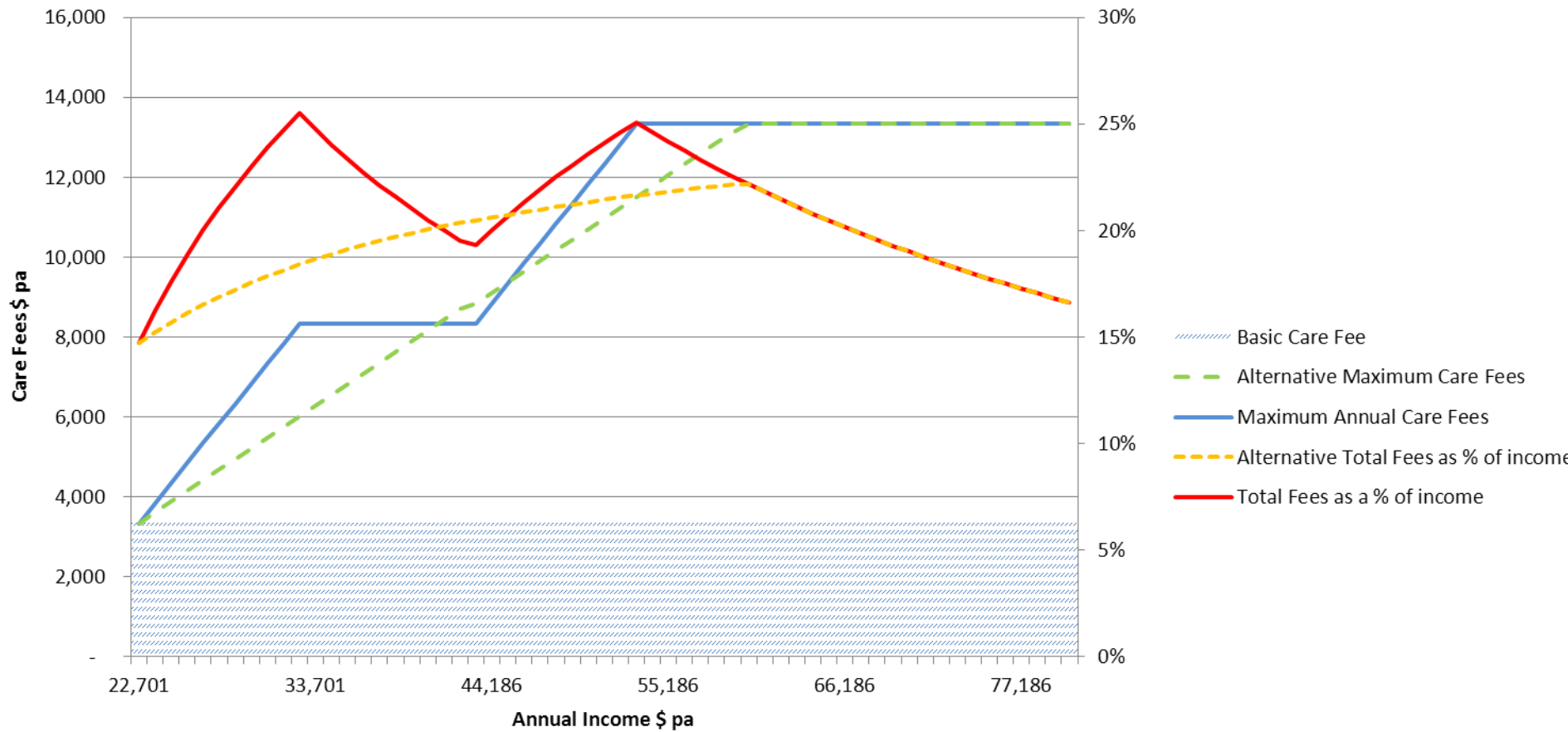
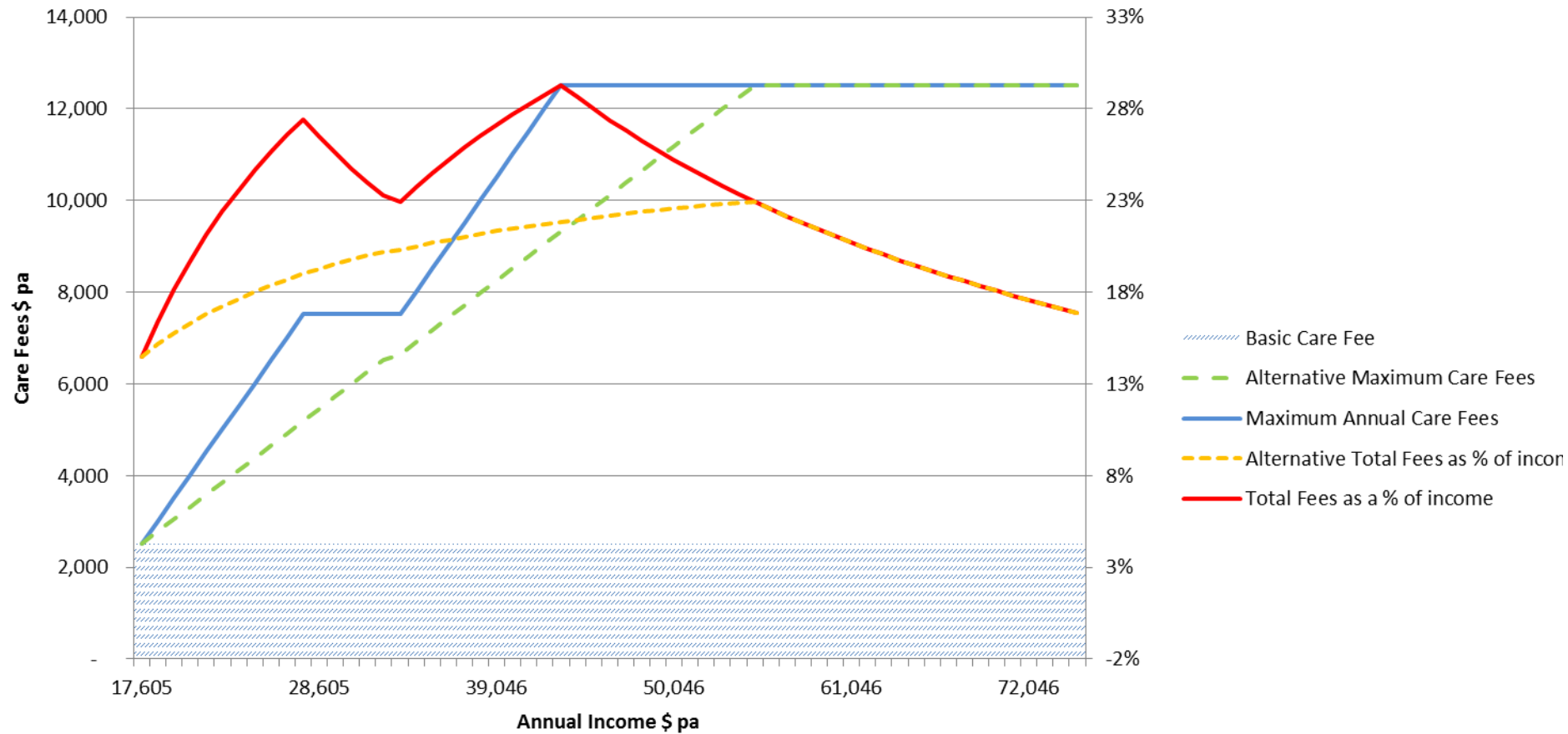


Total Care Fees as a % of Income (single)



Total Care Fees as a % of Income (couple)



How much income does a retiree need?

	Modest lifestyle – single	Modest lifestyle – couple
Housing – ongoing only	\$60.77	\$58.34
Energy	\$40.45	\$53.72
Food	\$74.83	\$154.99
Clothing	\$18.19	\$26.53
Household goods and services	\$26.29	\$35.64
Health	\$36.96	\$71.34
Transport	\$94.01	\$96.67
Leisure	\$72.19	\$107.56
Communications	\$9.45	\$16.54
Total per week	\$433.14	\$624.35
Total per year	\$22,585	\$32,555

Source: The ASFA Retirement Standard (Feb 2013)